

UNITED STATES
DEPARTMENT OF THE INTERIOR
BUREAU OF LAND MANAGEMENT

RECEIVED

FORM APPROVED
OMB NO 1004-0137
Expires July 31, 2010

APR 19 2011


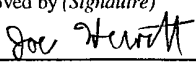
APPLICATION FOR PERMIT TO DRILL OR REENTER

1a. Type of Work <input checked="" type="checkbox"/> DRILL <input type="checkbox"/> REENTER		5. Lease Serial No. USA NMNM 66864
1b. Type of Well <input type="checkbox"/> Oil Well <input checked="" type="checkbox"/> Gas Well <input type="checkbox"/> Other <input type="checkbox"/> Single Zone <input type="checkbox"/> Multiple Zone		6. If Indian, Allottee or Tribe Name
2. Name of Operator Energen Resources Corporation		7. Unit or CA Agreement Name and No.
3a. Address 2010 Afton Place Farmington, New Mexico 87401	3b. Phone No. (include area code) (505)325-6800	8. Lease Name and Well No. Carracas 27B #16H
4. Location of Well (Report location clearly and in accordance with any State requirements)* At surface 1,044' FSL, 748' FWL At proposed prod. zone 1,000' FSL, 100' FWL		9. API Well No. 30-089-31056
14. Distance in miles and direction from nearest town or post office* 9 miles from Arboles		10. Field and Pool, or Exploratory Basin Fruitland Coal
15. Distance from proposed* location to nearest property or lease line, ft. (Also to nearest drg. unit line, if any) 748'		11. Sec., T., R., M., or Blk. and Survey or Area Sec. 26 T 32N R 4W
16. No. of Acres in lease 320		12. County or Parish Rio Arriba
17. Spacing Unit dedicated to this well 320 S/2		13. State NM
18. Distance from proposed location* to nearest well, drilling, completed, applied for, on this lease, ft. 48'		20. BLM/BIA Bond No. on file RCVD JUN 17 '11 OIL CONS. DIV. DIST. 3
21. Elevations (Show whether DF, KDB, RT, GL, etc.) 7,058' GL		22. Approximate date work will start* 04/01/2011
23. Estimated duration 30 days		

24. Attachments

The following, completed in accordance with the requirements of Onshore Oil and Gas Order No. 1, must be attached to this form:

- | | |
|--|---|
| 1. Well plat certified by a registered surveyor. | 4. Bond to cover the operations unless covered by an existing bond on file (see Item 20 above). |
| 2. A Drilling Plan. | 5. Operator certification. |
| 3. A Surface Use Plan (if the location is on National Forest System Lands, the SUPO must be filed with the appropriate Forest Service Office). | 6. Such other site specific information and/or plans as may be required by the BLM |

25. Signature 	Name (Printed/Typed) Devin Mills	Date 04/08/10
Title Drilling Engineer		
Approved by (Signature) 	Name (Printed/Typed) JOE Hewitt	Date 6-15-11
Title acting ADM	Office FFO	

Application approval does not warrant or certify that the applicant holds legal or equitable title to those rights in the subject lease which would entitle the applicant to conduct operations thereon.
Conditions of approval, if any, are attached.

Title 18 U.S.C. Section 1001 and Title 43 U.S.C. Section 1212, make it a crime for any person knowingly and willfully to make to any department or agency of the United States any false, fictitious or fraudulent statements or representations as to any matter within its jurisdiction.

(Continued on page 2)

Requires simultaneous Dedication Order before Production Begins (30-39-24510)

Hold C104

for Directional Survey
and "As Drilled" plat

This action is subject to technical and procedural review pursuant to 43 CFR 3165.5 and appeal pursuant to 43 CFR 3165.4

NMOC

JUL 01 2011

DRILLING OPERATIONS AUTHORIZED ARE
SUBJECT TO COMPLIANCE WITH ATTACHED
"GENERAL REQUIREMENTS".BLM'S APPROVAL OR ACCEPTANCE OF THIS
ACTION DOES NOT RELIEVE THE LESSEE AND
OPERATOR FROM OBTAINING ANY OTHER
AUTHORIZATION REQUIRED FOR OPERATIONS
ON FEDERAL AND INDIAN LANDSNOTIFY AZTEC OCD 24 HRS.
PRIOR TO CASING & CEMENT

DISTRICT I
1825 N. French Dr., Hobbs, N.M. 88240

State of New Mexico
Energy, Minerals & Natural Resources Department

Form C-102
Revised July 16, 2010

DISTRICT II
1301 W. Grand Avenue, Artesia, N.M. 88210

Submit one copy to appropriate
District Office

DISTRICT III
1000 Rio Brazos Rd., Aztec, N.M. 87410

OIL CONSERVATION DIVISION
1220 South St. Francis Dr.
Santa Fe, NM 87505

DISTRICT IV
1220 S. St. Francis Dr., Santa Fe, NM 87505

☐ AMENDED REPORT

WELL LOCATION AND ACREAGE DEDICATION PLAT

¹ API Number 30-039-31056	² Pool Code 71629	³ Pool Name BASIN FRUITLAND COAL
⁴ Property Code 35664	⁵ Property Name CARRACAS 27B	⁶ Well Number 16 H
⁷ OGRID No. 162928	⁸ Operator Name ENERGEN RESOURCES CORPORATION	⁹ Elevation 7058'

¹⁰ Surface Location

UL or lot no	Section	Township	Range	Lot Idn	Feet from the	North/South line	Feet from the	East/West line	County
M	26	32N	4W		1044'	SOUTH	748'	WEST	RIO ARRIBA

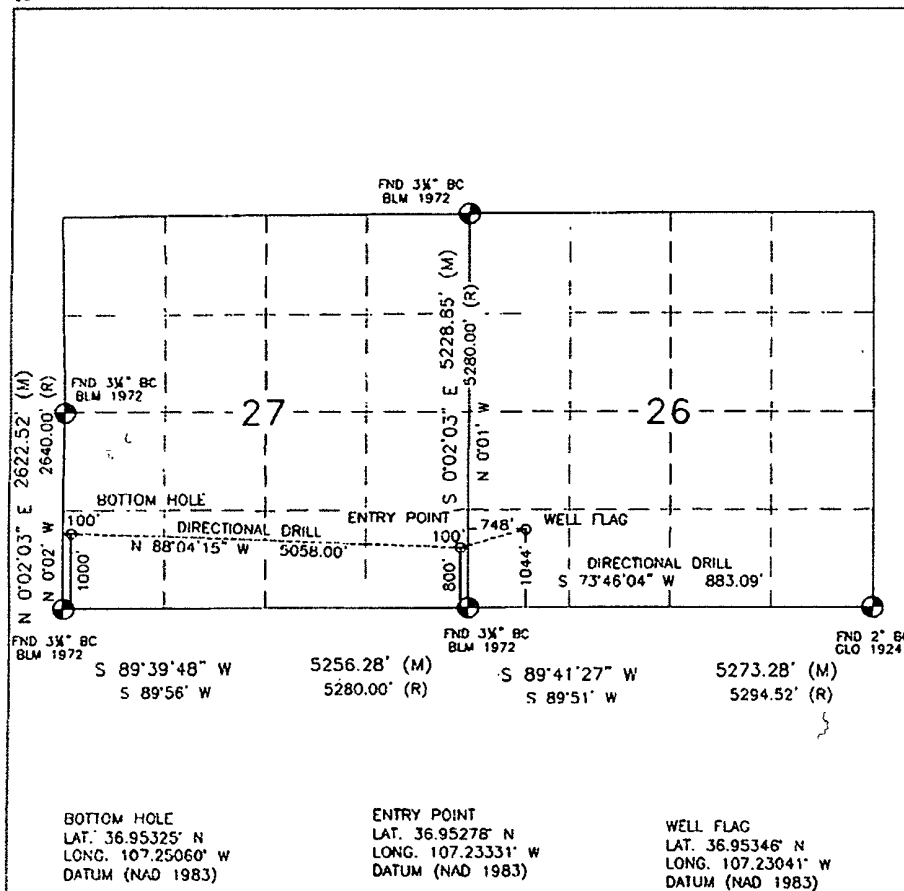
¹¹ Bottom Hole Location If Different From Surface

UL or lot no.	Section	Township	Range	Lot Idn	Feet from the	North/South line	Feet from the	East/West line	County
M	27	32N	4W		1000'	SOUTH	100'	WEST	RIO ARRIBA

¹² Dedicated Acres 320.0 5/2	¹³ Joint or Infill	¹⁴ Consolidation Code	¹⁵ Order No. R-13119
--	-------------------------------	----------------------------------	------------------------------------

NO ALLOWABLE WILL BE ASSIGNED TO THIS COMPLETION UNTIL ALL INTERESTS HAVE BEEN CONSOLIDATED
OR A NON-STANDARD UNIT HAS BEEN APPROVED BY THE DIVISION

16



¹⁷ OPERATOR CERTIFICATION

I hereby certify that the information contained herein is true and complete to the best of my knowledge and belief, and that this organization either owns a working interest or undivided mineral interest in the land including the proposed bottom hole location or has a right to drill this well at this location pursuant to a contract with an owner of such a mineral or working interest, or to a voluntary pooling agreement or a compulsory pooling order heretofore entered by the division.

Signature: *[Signature]* Date: 5-25-11

Printed Name: DEVEN MILLS

E-mail Address: DMILLS@ENERGEN.COM

¹⁸ SURVEYOR CERTIFICATION

I hereby certify that the well location shown on this plat was plotted from field notes of actual surveys made by me or under my supervision, and that the same is true and correct to the best of my belief.

AUGUST 3, 2009

Date of Survey

Signature and Seal of Registered Professional Surveyor.



DAVID RUSSELL

Certificate Number

10201

3/31/2011



Operations Plan

Well Name: Carracas 27B 16 H
Job Type: Horizontal Coal
Dept: Drilling and Completions

General Information

Project: 2011 - CARRACAS
Area: Carracas
Surface Location: 1044' FSL 748' FWL
S-T-R: Sec. 26, T32, R4
Bottom Hole Location: 1000 FSL 100 FWL
S-T-R: Sec. 27, T32N, R4W
County/State: RIO ARRIBA / NM
Elevations: 7058
Total Depth:
Formation Objective:

Formation Tops

Formation Name	Depth (TVD ft.)
SAN JOSE	Surface
NACIMIENTO	2148
OJO_ALAMO	3400
KIRTLAND	3528
FRUITLAND	3811
FRUITLAND_COAL_TOP	3964
FRUITLAND_COAL_BASE	3977
PICTURED CLIFFS	4062

Drilling

Please see below for mud system.

Projected KOP is 3000' TVD with 5.86°/100' doglegs.

Blowout Control Specifications:

A 3000 psi minimum double ram or annulus BOP stack will be used following nipple up of casing head. A 2" nominal, 2000 psi minimum choke manifold will also be used. An upper Kelly Cock valve handle and drill string valve should be available to fit each drill string and be available on the rig floor during drilling operations. Pressure test BOP to 250 psi for 15 min and 2000 psi for 15 min.

3/31/2011

ENERGEN

R E S O U R C E S

Logging Program

		Top	Base	
Log Type	Hole	Depth	Depth	Notes

I-PZIG

Production

Casing, Tubing and Casing Equipment

	Start	End				
String	Depth	Depth	Wellbore	Size	Weight	Grade
Casing-Surface	0	200	12.250000"	9.625"	32.3 lb/ft	H-40
Casing-Intermediate	0	4550	8.750000"	7"	23.0 lb/ft	J-55
Casing-Production	4500	9460	6.250000"	4.5"	11.6 lb/ft	J-55
Casing-Surface						
Casing-Intermediate						
Casing-Production						

Cementing	Notes
Casing-Surface	107 sks Type V with 2.0 % CaCl ₂ and ¼ #/sk Flocele (15.6 ppg, 1.18 ft ³ /sk 126 ft ³ of slurry, 100% excess to circulate to surface). WOC 12 hours. Pressure test surface casing to 750 psi for 30 min.
Casing-Intermediate	Depending on wellbore conditions, cement may consist of 270 sks PRB II with 5 #/sk Gilsonite, and ¼ #/sk Flocele (12.3 ppg, 2.24 ft ³ /sk) and a tail of 100 sks PRB II with 5 #/sk Gilsonite and ¼ #/sk Flocele (13.5 ppg, 1.81 ft ³ /sk). (785 ft ³ of slurry, 20% open hole excess to circulate to surface). WOC 12 hours. Test casing to 1500 psi for 30 min.
Casing-Production	Open hole completion, no cement.

Other Information

- 1) Open hole completion, no cement.
- 2) If lost circulation is encountered, sufficient LCM will be added to the mud system to maintain well control. The intermediate string may need to be cemented in multiple stages with a slurry design deviated from that listed above.
- 3) If high reservoir pressures or water flows are encountered slurry design may need to be deviated to from those listed above to satisfy wellbore and formation conditions.
- 4) Primary Objective formation has an Est BHP of: psi
- 5) This gas is dedicated.

Mud System

Surface: 12 1/4" wellbore will be drilled with a fresh water mud system (spud mud).

Intermediate: 8 3/4" wellbore will be drilled with a LSND mud system. Weighting materials will be drill cuttings and if needed barite. Mud density is expected to range from 8.4 ppg to 9.3 ppg.

Production: 6 1/4" wellbore will be drilled with a fresh water or brine water system depending on reservoir characteristics. Anticipated BHP can be as high as 1,100 psi.

Energen APD Report

Company: Energen Resources
Project: Carson National Forest
Site: 27B; Sec 27 T32N R4W
Well: Carracas 27B #16H
Wellbore: Wellbore #1
Design: Design #1

Local Co-ordinate Reference: Site 27B; Sec 27 T32N R4W
TVD Reference: WELL @ 7072.0usft (Original Well Elev)
MD Reference: WELL @ 7072.0usft (Original Well Elev)
North Reference: True
Survey Calculation Method: Minimum Curvature
Database: EDM 5000.1 Single User Db

Project	Carson National Forest
Map System:	US State Plane 1983
Geo Datum:	North American Datum 1983
Map Zone:	New Mexico Central Zone
System Datum:	Mean Sea Level

Site		27B; Sec 27 T32N R4W			
Site Position:		Northing:		2,167,826.53 usft	
From:	Lat/Long	Easting:		1,353,955.45 usft	
Position Uncertainty:		Slot Radius:		13-3/16 "	
				Latitude: 36° 57' 12.456 N	
				Longitude: 107° 13' 49.476 W	
				Grid Convergence: -0.59 °	

Well		Carracas 27B #16H				
Well Position	+N/-S	0.0 usft	Northing:	2,167,826.53 usft	Latitude:	36° 57' 12.456 N
	+E/-W	0.0 usft	Easting:	1,353,955.45 usft	Longitude:	107° 13' 49.476 W
Position Uncertainty	0.0 usft	Wellhead Elevation:	usft	Ground Level:	7,058.0 usft	

Wellbore	Wellbore #1				
Magnetics	Model Name	Sample Date	Declination	Dip Angle	Field Strength
	IGRF200510	3/28/2011	(°)	(°)	(nT)
			9.70	63.77	50,979

Design:	Design #1			
Audit Notes:				
Version:	Phase:	PROTOTYPE	Tie On Depth:	0.0
Vertical Section:	Depth From (TVD)	+N/-S	+E/-W	Direction
	(usft)	(usft)	(usft)	(°)
	0.0	0.0	0.0	269.60

Survey Tool Program		Date 3/29/2011		
From (usft)	To (usft)	Survey (Wellbore)	Tool Name	Description
0.0	9,461.9	Design #1 (Wellbore #1)	MWD	MWD - Standard

Energen APD Report

Company: Energen Resources
Project: Carson National Forest
Site: 27B; Sec 27 T32N R4W
Well: Carracas 27B #16H
Wellbore: Wellbore #1
Design: Design #1

Local Co-ordinate Reference: Site 27B; Sec 27 T32N R4W
TVD Reference: WELL @ 7072.0usft (Original Well Elev)
MD Reference: WELL @ 7072.0usft (Original Well Elev)
North Reference: True
Survey Calculation Method: Minimum Curvature
Database: EDM 5000.1 Single User Db

Planned Survey

MD (usft)	Inc (°)	Azi (azimuth) (°)	V. Sec (usft)	N/S (usft)	E/W (usft)	DLeg (°/100usft)
0.0	0.00	0.00	0.0	0.0	0.0	0.00
200.0	0.00	0.00	0.0	0.0	0.0	0.00
9 5/8"						
2,148.0	0.00	0.00	0.0	0.0	0.0	0.00
Nacimiento						
3,000.0	0.00	0.00	0.0	0.0	0.0	0.00
3,100.0	5.86	269.60	5.1	0.0	-5.1	5.86
3,200.0	11.73	269.60	20.4	-0.1	-20.4	5.86
3,300.0	17.59	269.60	45.7	-0.3	-45.7	5.86
3,400.0	23.46	269.60	80.7	-0.6	-80.7	5.86
3,412.1	24.17	269.60	85.6	-0.6	-85.6	5.86
Ojo Alamo						
3,500.0	29.32	269.60	125.2	-0.9	-125.2	5.86
3,557.8	32.71	269.60	155.0	-1.1	-155.0	5.86
Kirtland						
3,600.0	35.19	269.60	178.5	-1.2	-178.5	5.86
3,700.0	41.05	269.60	240.2	-1.7	-240.2	5.86
3,800.0	46.92	269.60	309.6	-2.2	-309.6	5.86
3,900.0	52.78	269.60	386.0	-2.7	-386.0	5.86
3,956.7	56.11	269.60	432.2	-3.0	-432.2	5.86
Fruitland						
4,000.0	58.64	269.60	468.6	-3.3	-468.6	5.86
4,100.0	64.51	269.60	556.5	-3.9	-556.5	5.86
4,200.0	70.37	269.60	648.8	-4.5	-648.8	5.86
4,300.0	76.24	269.60	744.6	-5.2	-744.6	5.86
4,375.1	80.64	269.60	818.1	-5.7	-818.1	5.86
Fruitland Coal						
4,400.0	82.10	269.60	842.8	-5.9	-842.7	5.86

Energen APD Report

Company: Energen Resources
Project: Carson National Forest
Site: 27B; Sec 27 T32N R4W
Well: Carracas 27B #16H
Wellbore: Wellbore #1
Design: Design #1

Local Co-ordinate Reference: Site 27B; Sec 27 T32N R4W
TVD Reference: WELL @ 7072.0usft (Original Well Elev)
MD Reference: WELL @ 7072.0usft (Original Well Elev)
North Reference: True
Survey Calculation Method: Minimum Curvature
Database: EDM 5000.1 Single User Db

Planned Survey

MD (usft)	Inc (°)	Azi (azimuth) (°)	V. Sec (usft)	N/S (usft)	E/W (usft)	DLeg (°/100usft)
4,406.1	82.46	269.60	848.8	-5.9	-848.7	5.86
27B16 Entry pt						
4,500.0	87.97	269.60	942.3	-6.6	-942.3	5.86
4,537.2	90.15	269.60	979.6	-6.8	-979.5	5.86
4,550.0	90.15	269.60	992.3	-6.9	-992.3	0.00
7"						
4,600.0	90.15	269.60	1,042.3	-7.3	-1,042.3	0.00
4,700.0	90.15	269.60	1,142.3	-8.0	-1,142.3	0.00
4,800.0	90.15	269.60	1,242.3	-8.7	-1,242.3	0.00
4,900.0	90.15	269.60	1,342.3	-9.4	-1,342.3	0.00
5,000.0	90.15	269.60	1,442.3	-10.1	-1,442.3	0.00
5,100.0	90.15	269.60	1,542.3	-10.8	-1,542.3	0.00
5,200.0	90.15	269.60	1,642.3	-11.5	-1,642.3	0.00
5,300.0	90.15	269.60	1,742.3	-12.2	-1,742.3	0.00
5,400.0	90.15	269.60	1,842.3	-12.9	-1,842.3	0.00
5,500.0	90.15	269.60	1,942.3	-13.6	-1,942.3	0.00
5,600.0	90.15	269.60	2,042.3	-14.3	-2,042.3	0.00
5,700.0	90.15	269.60	2,142.3	-15.0	-2,142.3	0.00
5,800.0	90.15	269.60	2,242.3	-15.7	-2,242.3	0.00
5,900.0	90.15	269.60	2,342.3	-16.4	-2,342.3	0.00
6,000.0	90.15	269.60	2,442.3	-17.1	-2,442.3	0.00
6,100.0	90.15	269.60	2,542.3	-17.7	-2,542.3	0.00
6,200.0	90.15	269.60	2,642.3	-18.4	-2,642.3	0.00
6,300.0	90.15	269.60	2,742.3	-19.1	-2,742.3	0.00
6,400.0	90.15	269.60	2,842.3	-19.8	-2,842.3	0.00
6,500.0	90.15	269.60	2,942.3	-20.5	-2,942.3	0.00
6,600.0	90.15	269.60	3,042.3	-21.2	-3,042.2	0.00

Energen APD Report

Company: Energen Resources
Project: Carson National Forest
Site: 27B; Sec 27 T32N R4W
Well: Caracas 27B #16H
Wellbore: Wellbore #1
Design: Design #1

Local Co-ordinate Reference: Site 27B; Sec 27 T32N R4W
TVD Reference: WELL @ 7072.0usft (Original Well Elev)
MD Reference: WELL @ 7072.0usft (Original Well Elev)
North Reference: True
Survey Calculation Method: Minimum Curvature
Database: EDM 5000.1 Single User Db

Planned Survey

MD (usft)	Inc. (°)	Azi (azimuth) (°)	V. Sec (usft)	N/S (usft)	E/W (usft)	DLeg (°/100usft)
6,700.0	90.15	269.60	3,142.3	-21.9	-3,142.2	0.00
6,800.0	90.15	269.60	3,242.3	-22.6	-3,242.2	0.00
6,900.0	90.15	269.60	3,342.3	-23.3	-3,342.2	0.00
7,000.0	90.15	269.60	3,442.3	-24.0	-3,442.2	0.00
7,100.0	90.15	269.60	3,542.3	-24.7	-3,542.2	0.00
7,200.0	90.15	269.60	3,642.3	-25.4	-3,642.2	0.00
7,300.0	90.15	269.60	3,742.3	-26.1	-3,742.2	0.00
7,400.0	90.15	269.60	3,842.3	-26.8	-3,842.2	0.00
7,500.0	90.15	269.60	3,942.3	-27.5	-3,942.2	0.00
7,600.0	90.15	269.60	4,042.3	-28.2	-4,042.2	0.00
7,700.0	90.15	269.60	4,142.3	-28.9	-4,142.2	0.00
7,800.0	90.15	269.60	4,242.3	-29.6	-4,242.2	0.00
7,900.0	90.15	269.60	4,342.3	-30.3	-4,342.2	0.00
8,000.0	90.15	269.60	4,442.3	-31.0	-4,442.2	0.00
8,100.0	90.15	269.60	4,542.3	-31.7	-4,542.2	0.00
8,200.0	90.15	269.60	4,642.3	-32.4	-4,642.2	0.00
8,300.0	90.15	269.60	4,742.3	-33.1	-4,742.2	0.00
8,400.0	90.15	269.60	4,842.3	-33.8	-4,842.2	0.00
8,500.0	90.15	269.60	4,942.3	-34.5	-4,942.2	0.00
8,600.0	90.15	269.60	5,042.3	-35.2	-5,042.2	0.00
8,700.0	90.15	269.60	5,142.3	-35.9	-5,142.2	0.00
8,800.0	90.15	269.60	5,242.3	-36.6	-5,242.2	0.00
8,900.0	90.15	269.60	5,342.3	-37.3	-5,342.2	0.00
9,000.0	90.15	269.60	5,442.3	-38.0	-5,442.2	0.00
9,100.0	90.15	269.60	5,542.3	-38.7	-5,542.2	0.00
9,200.0	90.15	269.60	5,642.3	-39.4	-5,642.2	0.00
9,300.0	90.15	269.60	5,742.3	-40.1	-5,742.2	0.00

Energen APD Report

Company: Energen Resources
Project: Carson National Forest
Site: 27B, Sec 27 T32N R4W
Well: Carracas 27B #16H
Wellbore: Wellbore #1
Design: Design #1

Local Co-ordinate Reference: Site 27B, Sec 27 T32N R4W
TVD Reference: WELL @ 7072.0usft (Original Well Elev)
MD Reference: WELL @ 7072 0usft (Original Well Elev)
North Reference: True
Survey Calculation Method: Minimum Curvature
Database: EDM 5000.1 Single User Db

Planned Survey

MD (usft)	Inc. (°)	Azi (azimuth) (°)	V. Sec (usft)	N/S (usft)	E/W (usft)	DLeg (°/100usft)
9,400.0	90.15	269.60	5,842.3	-40.8	-5,842.2	0.00
9,460.0	90.15	269.60	5,902.3	-41.2	-5,902.2	0.00
4 1/2"						
9,461.9	90.15	269.60	5,904.2	-41.2	-5,904.0	0.00
27B16 BHL						

Casing Points

Measured Depth (usft)	Vertical Depth (usft)	Name	Casing Diameter (")	Hole Diameter (")
200.0	200.0	9 5/8"	9-5/8	12-1/4
4,550.0	3,977.0	7"	7	8-3/4
9,460.0	3,964.1	4 1/2"	4-1/2	6-1/4

Formations

Measured Depth (usft)	Vertical Depth (usft)	Name	Lithology	Dip (°)	Dip Direction (°)
4,375.1	3,964.0	Fruitland Coal	coal	0.00	
4,375.1	3,964.0	Fruitland Coal	Coal	0.00	
3,956.7	3,811.0	Fruitland	sandstone	0.00	
3,956.7	3,811.0	Fruitland	Sandstone	0.00	
2,148.0	2,148.0	Nacimiento	shale	0.00	
2,148.0	2,148.0	Nacimiento	Shale	0.00	
3,557.8	3,528.0	Kirtland	shale	0.00	
3,557.8	3,528.0	Kirtland	Shale	0.00	
3,412.1	3,400.0	Ojo Alamo	sandstone	0.00	
3,412.1	3,400.0	Ojo Alamo	Sandstone	0.00	

Checked By: _____ Approved By: _____ Date: _____

Geologic Prognosis

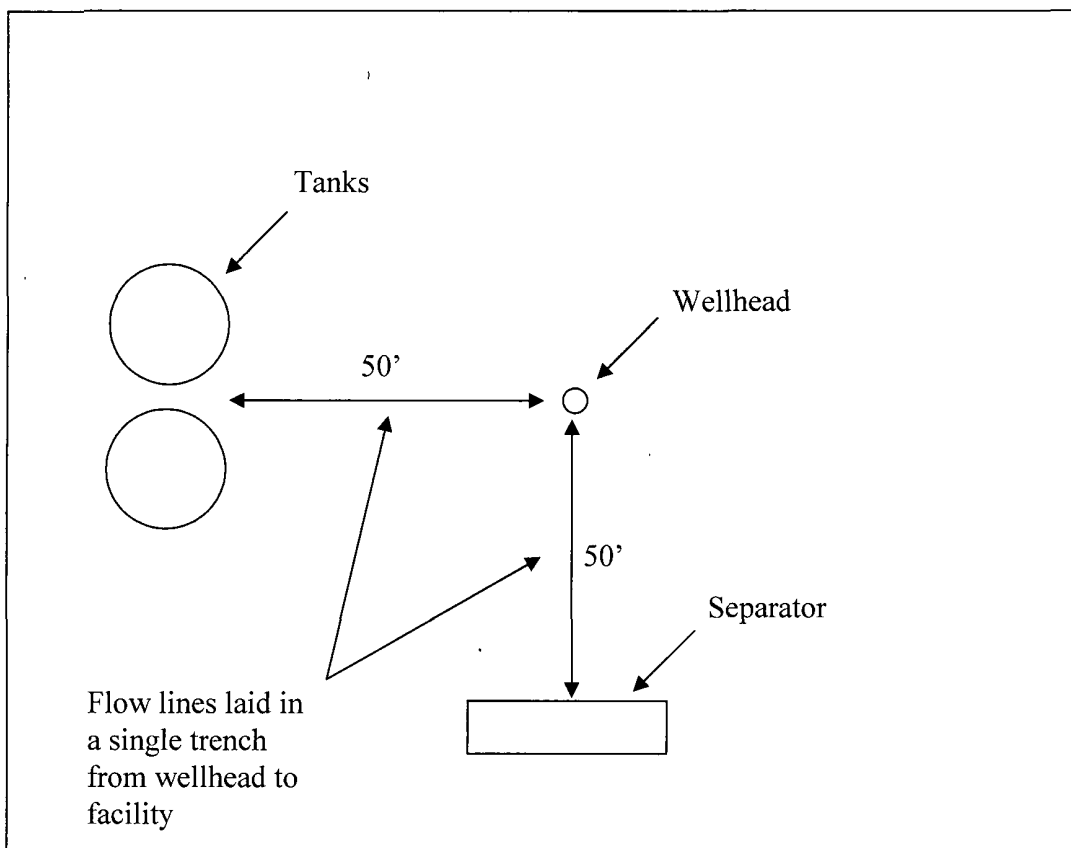
Company: Energen Resources Corporation
Project: 2011 - CARRACAS
Area: Carracas
Operator: ENERGEN RESOURCES CORPORATION
Well Name: Carracas 27B 16K
Surface Location (T/R/S): T32 / R4 / S26
Footage (SHL): 1044' FSL 748' FWL
Footage (BHL): 1000 FSL 100 FWL T32N / R4W / S27
County/State: RIO ARRIBA / NM
Surveyed GL: 7058
KB (est): 7074

Formation Name	Thickness	Depth (TVD-ft)	Structural Elev. (ft)
SAN JOSE	2132	Surface	7058
NACIMIENTO	1252	2148	4926
OJO_ALAMO	128	3400	3674
KIRTLAND	283	3528	3546
FRUITLAND	251	3811	3263
FRUITLAND_COAL_TOP	13	3964	3110
FRUITLAND_COAL_BASE		3977	3097
PICTURED CLIFFS		4062	3012

EXHIBIT C

Energen Resources Corporation

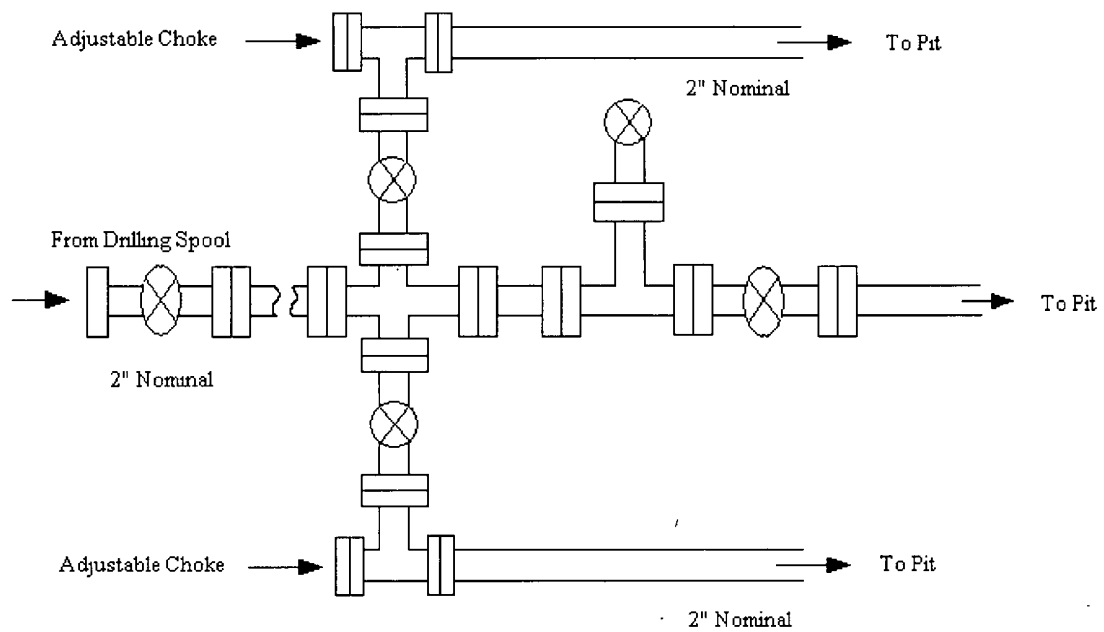
Typical well pad layout with production facilities on the Carson National Forest



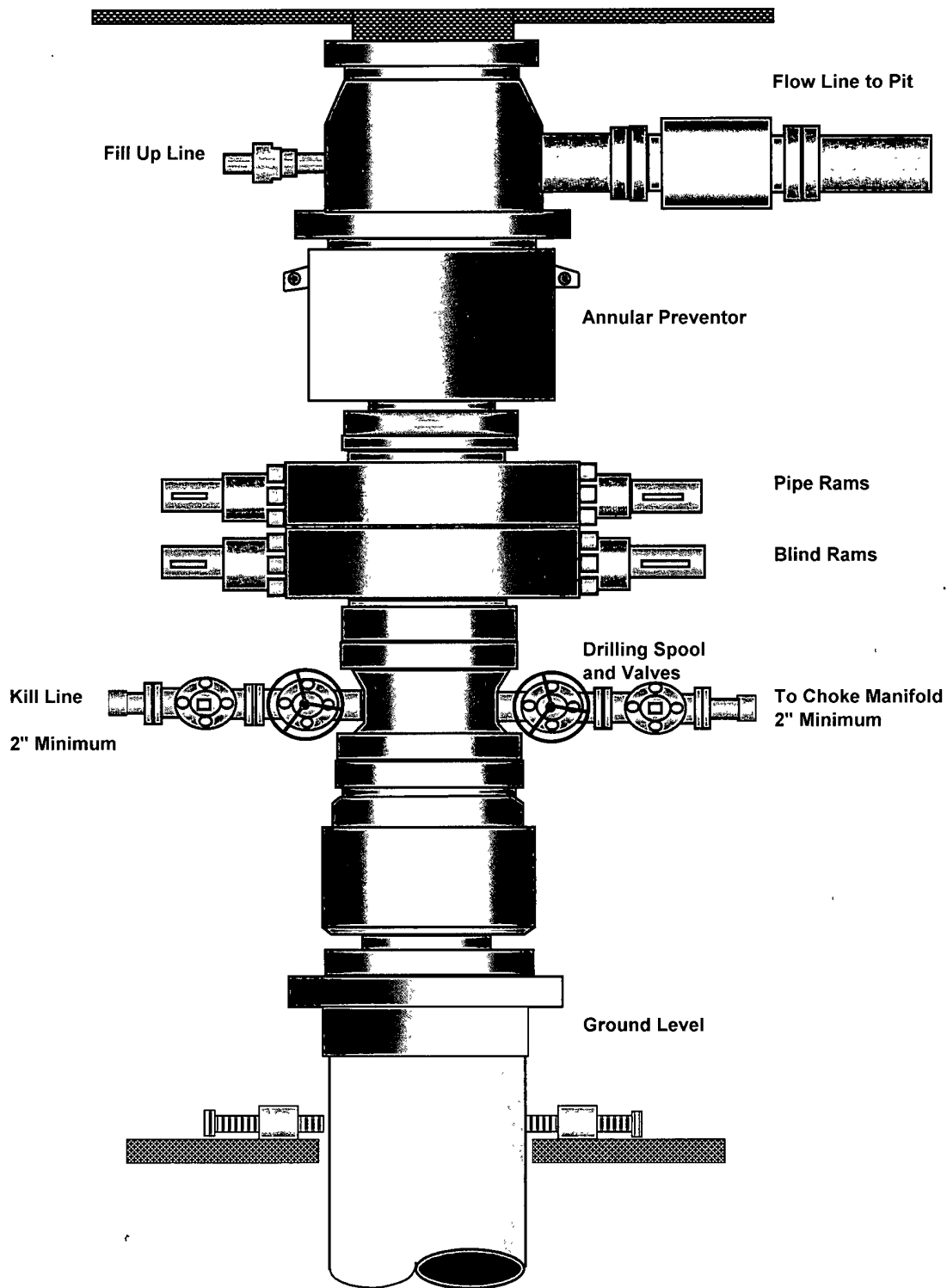
- 50 feet is a minimum offset to ensure facilities are on the outside of the drill rig anchors for work-over activity.

Energen Resources Corporation

Typical 2000 psi Choke Manifold Configuration



Choke manifold installed from surface to TD



3M Typical BOP Configuration