

**UNITED STATES
DEPARTMENT OF THE INTERIOR
BUREAU OF LAND MANAGEMENT**

RECEIVED**JUN 16 2011**

Sundry Notices and Reports on Wells

Farmington Field Office
Bureau of Land Management1. Type of Well
GAS2. Name of Operator
BURLINGTON
RESOURCES OIL & GAS COMPANY LP

3. Address & Phone No. of Operator

PO Box 4289, Farmington, NM 87499 (505) 326-9700

4. Location of Well, Footage, Sec., T, R, M

Unit J (NWSE), 1650' FSL & 1650' FEL, Section 3, T25N, R6W, NMPM

5. Lease Number
SF-0788856. If Indian, All. or
Tribe Name7. Unit Agreement Name
Canyon Largo Unit8. Well Name & Number
Canyon Largo Unit 149

9. API Well No.

30-039-20262

10. Field and Pool
Otero Chacra11. County and State
Rio Arriba, NM**12. CHECK APPROPRIATE BOX TO INDICATE NATURE OF NOTICE, REPORT, OTHER DATA**Type of Submission
☒ Notice of IntentType of Action
☒ Abandonment☐ Change of Plans☐ Other -☐ Subsequent Report☐ Recompletion☐ New Construction☐ Final Abandonment☐ Plugging☐ Non-Routine Fracturing☐ Casing Repair☐ Water Shut off☐ Altering Casing☐ Conversion to Injection**13. Describe Proposed or Completed Operations**

Burlington Resources requests permission to P&A the subject well per the attached procedure, current and proposed wellbore schematics.

**Notify NMOCD 24 hrs
prior to beginning
operations**

**RCVD JUN 22 '11
OIL CONS. DIV.
DIST. 3**

14. I hereby certify that the foregoing is true and correct.Signed Crystal Tafoya Crystal TafoyaTitle: Staff Regulatory TechnicianDate 6/16/11

(This space for Federal or State Office use)

APPROVED BY Original Signed: Stephen Mason Title _____CONDITION OF Operator Signed: Stephen MasonDate JUN 22 2011

Title 18 U.S.C. Section 1001, makes it a crime for any person knowingly and willfully to make any department or agency of the United States any false, fictitious or fraudulent statements or representations as to any matter within its jurisdiction

NMOCD
AV

ConocoPhillips
CANYON LARGO UNIT 149
Expense - P&A

Lat 36° 25' 32.052" N

Long 107° 27' 3.024" W

PROCEDURE

Note: This project requires a NMOCD C-144 CLEZ Closed-Loop System Permit for the use of a steel tank to handle waste fluids circulated from the well and cement wash up. All cement volumes use 100% excess outside pipe and 50' excess inside pipe. The stabilizing wellbore fluid will be 8.3 ppg, sufficient to balance all exposed formation pressures. All cement will be ASTM Type II (Class B) mixed at 15.6 ppg with a 1.18 cf/sk yield.

1. Hold pre-job safety meeting. Comply with all NMOCD, BLM, and COPC safety and environmental regulations. Install and test rig anchors prior to moving in rig.

2. MIRU work over rig. Check casing, tubing, and bradenhead pressures and record them in Wellview.

3. RU blow lines from casing valves and begin blowing down casing pressure. Kill well with water, if necessary. ND wellhead and NU BOPE. Pressure test BOP.

4. Run casing scraper from top of perforations to surface.

5. **Plug #1 (Chacra perforations & formation top, 3,718'- 3,618')**: RIH and set CIBP at 3,718'. Pressure test tubing to 1000 psi. Load casing with water and attempt to establish circulation. Mix 5 sx Class B cement and spot inside the casing above CIBP to isolate the Chacra perforations and formation top. WOC. Tag cement. Circulate well clean with water. Pressure test casing to 560 psi. If casing does not test, then spot and tag subsequent plugs as necessary. PUH.

6. **Plug #2 (Pictured Cliffs, Fruitland, Kirtland, and Ojo Alamo formation tops, ^{2748 2130}~~2,950'-2,200'~~)**: Mix ²³~~25~~ sx Class B cement and spot a balanced cement plug inside casing to isolate the Pictured Cliffs, Fruitland, Kirtland, and Ojo Alamo formation tops. TOH.

7. **Plug #3 (Nacimiento formation top, ^{920 820}~~910' - 810'~~)**: Perforate 3 HSC holes at 910'. RIH and set CR at ⁹²⁰~~860'~~. Establish injection rate into squeeze holes. Mix 40 sx Class B cement. Sqz 35 sx Class B cement into HSC holes and leave 5 sx cement inside casing to isolate the Nacimiento formation top. TOH and LD tubing.

8. **Plug #4 (Surface Casing Shoe and Surface Plug, 183'-Surface)**: Perforate 3 HSC holes at 183'. Establish circulation out BH with water to circulate BH annulus clean. Mix 56 sx Class B cement and pump down 2-7/8" casing to circulate good cement out BH. Shut in well and WOC.

9. Nipple down BOP and cut off casing below the casing flange. Install P&A marker with cement to comply with regulations. Rig down, move off location, cut off anchors, and restore location to its natural state.

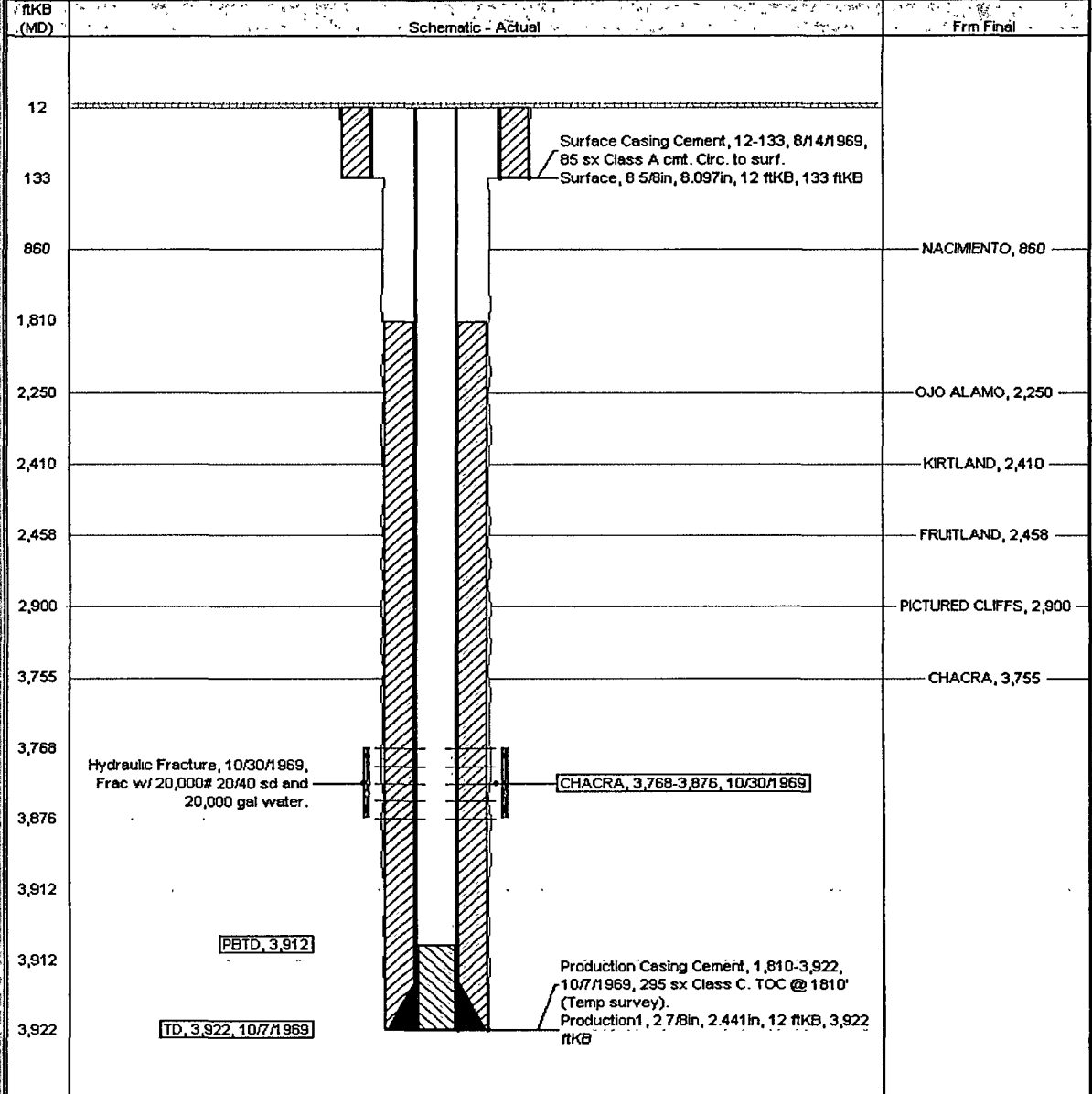
ConocoPhillips

Well Name: CANYON LARGO UNIT #149

Current Schematic

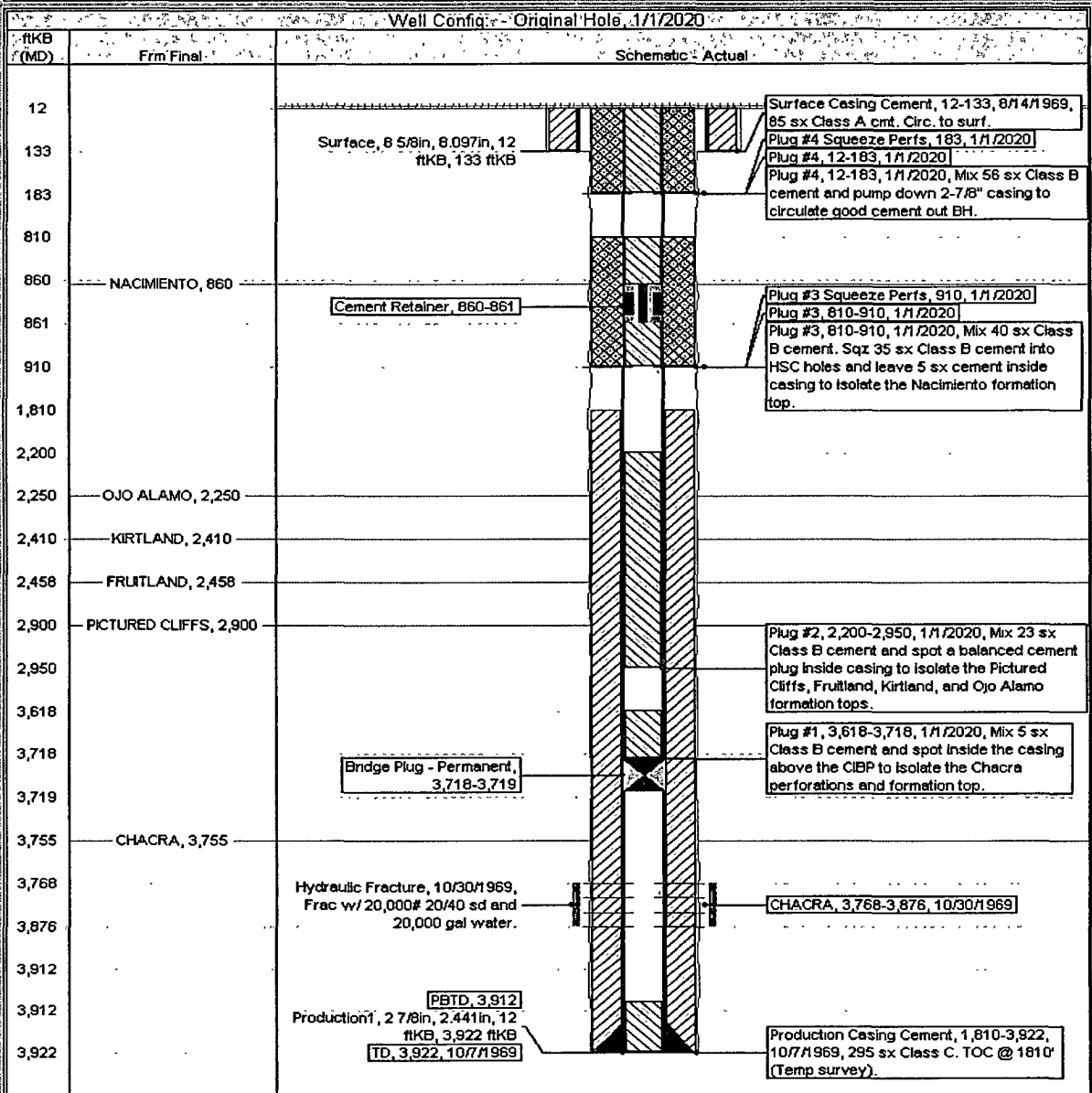
API/ UWI	State/ Legal Location	Field Name	License No.	State/ Province	Well Configuration Type	Edit
3003920262	NMPM,003-025N-006W	OTERO (CHACRA) GAS		NEW MEXICO		
Ground Elevation (ft)	Original KB/RT Elevation (ft)	KB- Ground Distance (ft)	KB- Casing/Range Distance (ft)	KB- Tubing/Hanger Distance (ft)		
6,773.00	6,785.00	12.00				

Well Config. - Original Hole: 6/1/2011 10:24:26 AM



Proposed Schematic

API/UA#	Service Legal Location	Field Name	License No.	State/Province	Well Configuration Type	Edit
3003920262	NMPM,003-025N-006W	OTERO (CHACRA) GAS		NEW MEXICO		
Gross Elevation (ft)	Original F.B.R.T. Elevation (ft)	IS-Gross Distance (ft)	IS-Casing (Hanger) Distance (ft)	IS-Tagline (Hanger) Distance (ft)		
6,773.00	6,785.00	12,000				



**UNITED STATES DEPARTMENT OF THE INTERIOR
BUREAU OF LAND MANAGEMENT
FARMINGTON DISTRICT OFFICE
1235 LA PLATA HIGHWAY
FARMINGTON, NEW MEXICO 87401**

Attachment to notice of
Intention to Abandon:

Re: Permanent Abandonment
Well: 149 Canyon Largo Unit

CONDITIONS OF APPROVAL

1. Plugging operations authorized are subject to the attached "General Requirements for Permanent Abandonment of Wells on Federal and Indian Lease."
2. Farmington Office is to be notified at least 24 hours before the plugging operations commence (505) 599-8907.
3. The following modifications to your plugging program are to be made:
 - a) Place the Pictured Cliffs/Fruitland/Kirtland/Ojo Alamo plug from 2948' – 2130'. ✓
 - b) Place the Nacimiento plug from 920' – 820'. ✓

You are also required to place cement excesses per 4.2 and 4.4 of the attached General Requirements.

Office Hours: 7:45 a.m. to 4:30 p.m.