

State of New Mexico  
Energy, Minerals and Natural Resources Department

**Susana Martinez**  
Governor

**Ken McQueen**  
Cabinet Secretary

**Matthias Sayer**  
Deputy Cabinet Secretary

**Heather Riley**, Division Director  
Oil Conservation Division



New Mexico Oil Conservation Division approval and conditions  
listed below are made in accordance with OCD Rule 19.15.7.11  
and are in addition to the actions approved by BLM on the  
following 3160-4 or 3160-5 form.

Operator Signature Date: 9/10/18 Well information:

API WELL #	Well Name	Well #	Operator Name	Type	Stat	County	Surf_Owner	UL	Sec	Twp	N/S	Rng	W/E
30-045-06577-00-00	CAMPBELL COM	001	ENDURING RESOURCES, LLC	G	A	San Juan	F	B	15	27	N	12	W

Application Type:

- ☒ P&A    ☐ Drilling/Casing Change    ☐ Location Change  
☐ Recomplete/DHC (For hydraulic fracturing operations review EPA Underground injection control Guidance #84; Submit Gas Capture Plan form prior to spudding or initiating recompletion operations)  
☐ Other:

Conditions of Approval:

- Notify NMOCD 24hrs prior to beginning operations.
- Add Chacra plug 1982'-1882'.

NMOCD Approved by Signature

10/22/18  
Date

UNITED STATES  
DEPARTMENT OF THE INTERIOR  
BUREAU OF LAND MANAGEMENT

RECEIVED

SEP 10 2018

FORM APPROVED  
OMB No. 1004-0137  
Expires: January 31, 2018

**SUNDRY NOTICES AND REPORTS ON WELLS**  
**Do not use this form for proposals to drill or to re-enter an abandoned well. Use Form 3160-3 (APD) for such proposals.**

<b>SUBMIT IN TRIPLICATE - Other instructions on page 2</b>		5. Lease Serial No. NMSF078935
1. Type of Well <input type="checkbox"/> Oil Well <input checked="" type="checkbox"/> Gas Well <input type="checkbox"/> Other		6. If Indian, Allottee or Tribe Name
2. Name of Operator ENDURING RESOURCES IV, LLC		7. If Unit of CA/Agreement, Name and/or No.
3a. Address 332 ROAD 3100 AZTEC, NM 87410	3b. Phone No. (include area code) (505) 636-9722	8. Well Name and No. CAMPBELL COM 1
4. Location of Well (Footage, Sec., T., R., M., or Survey Description) 990 FNL, 1650 FEL S 15, T 27N, R 12W		9. API Well No. 30-045-06577
		10. Field and Pool or Exploratory Area BASIN DAKOTA
		11. Country or Parish, State SAN JUAN COUNTY, NEW MEXICO

12. CHECK THE APPROPRIATE BOX(ES) TO INDICATE NATURE OF NOTICE, REPORT OR OTHER DATA

TYPE OF SUBMISSION	TYPE OF ACTION			
<input checked="" type="checkbox"/> Notice of Intent	<input type="checkbox"/> Acidize	<input type="checkbox"/> Deepen	<input type="checkbox"/> Production (Start/Resume)	<input type="checkbox"/> Water Shut-Off
<input type="checkbox"/> Subsequent Report	<input type="checkbox"/> Alter Casing	<input type="checkbox"/> Hydraulic Fracturing	<input type="checkbox"/> Reclamation	<input type="checkbox"/> Well Integrity
<input type="checkbox"/> Final Abandonment Notice	<input type="checkbox"/> Casing Repair	<input type="checkbox"/> New Construction	<input type="checkbox"/> Recomplete	<input type="checkbox"/> Other
	<input type="checkbox"/> Change Plans	<input checked="" type="checkbox"/> Plug and Abandon	<input type="checkbox"/> Temporarily Abandon	
	<input type="checkbox"/> Convert to Injection	<input type="checkbox"/> Plug Back	<input type="checkbox"/> Water Disposal	

13. Describe Proposed or Completed Operation: Clearly state all pertinent details, including estimated starting date of any proposed work and approximate duration thereof. If the proposal is to deepen directionally or recompleat horizontally, give subsurface locations and measured and true vertical depths of all pertinent markers and zones. Attach the Bond under which the work will be performed or provide the Bond No. on file with BLM/BIA. Required subsequent reports must be filed within 30 days following completion of the involved operations. If the operation results in a multiple completion or recompleat in a new interval, a Form 3160-4 must be filed once testing has been completed. Final Abandonment Notices must be filed only after all requirements, including reclamation, have been completed and the operator has detennined that the site is ready for final inspection.)

THE CAMPBELL COM 1 IS NO LONGER ECONOMIC TO OPERATE, ENDURING RESOURCES IV LLC PROPOSES TO PA THIS WELL WITH THE FOLLOWING PROCEDURE:

PLEASE SEE ATTACHED PROCEDURE, CURRENT AND PROPOSED WELLBORE DIAGRAMS.

NMOCD

OCT 05 2018

DISTRICT III

SEE ATTACHED FOR  
CONDITIONS OF APPROVAL

Notify NMOCD 24 hrs  
prior to beginning  
operations

BLM'S APPROVAL OR ACCEPTANCE OF THIS  
ACTION DOES NOT RELIEVE THE LESSEE AND  
OPERATOR FROM OBTAINING ANY OTHER  
AUTHORIZATION REQUIRED FOR OPERATIONS  
ON FEDERAL AND INDIAN LANDS

14. I hereby certify that the foregoing is true and correct. Name (Printed/Typed) APRIL E POHL	REGULATORY SPECIALIST Title
Signature <i>April E Pohl</i>	Date 9/10/18

THE SPACE FOR FEDERAL OR STATE OFFICE USE

Approved by <i>[Signature]</i>	Title PE	Date 10/1/18
Conditions of approval, if any, are attached. Approval of this notice does not warrant or certify that the applicant holds legal or equitable title to those rights in the subject lease which would entitle the applicant to conduct operations thereon.	Office FFO	

Title 18 U.S.C Section 1001 and Title 43 U.S.C Section 1212, make it a crime for any person knowingly and willfully to make to any department or agency of the United States any false, fictitious or fraudulent statements or representations as to any matter within its jurisdiction

(Instructions on page 2)

NMOCD *BP*

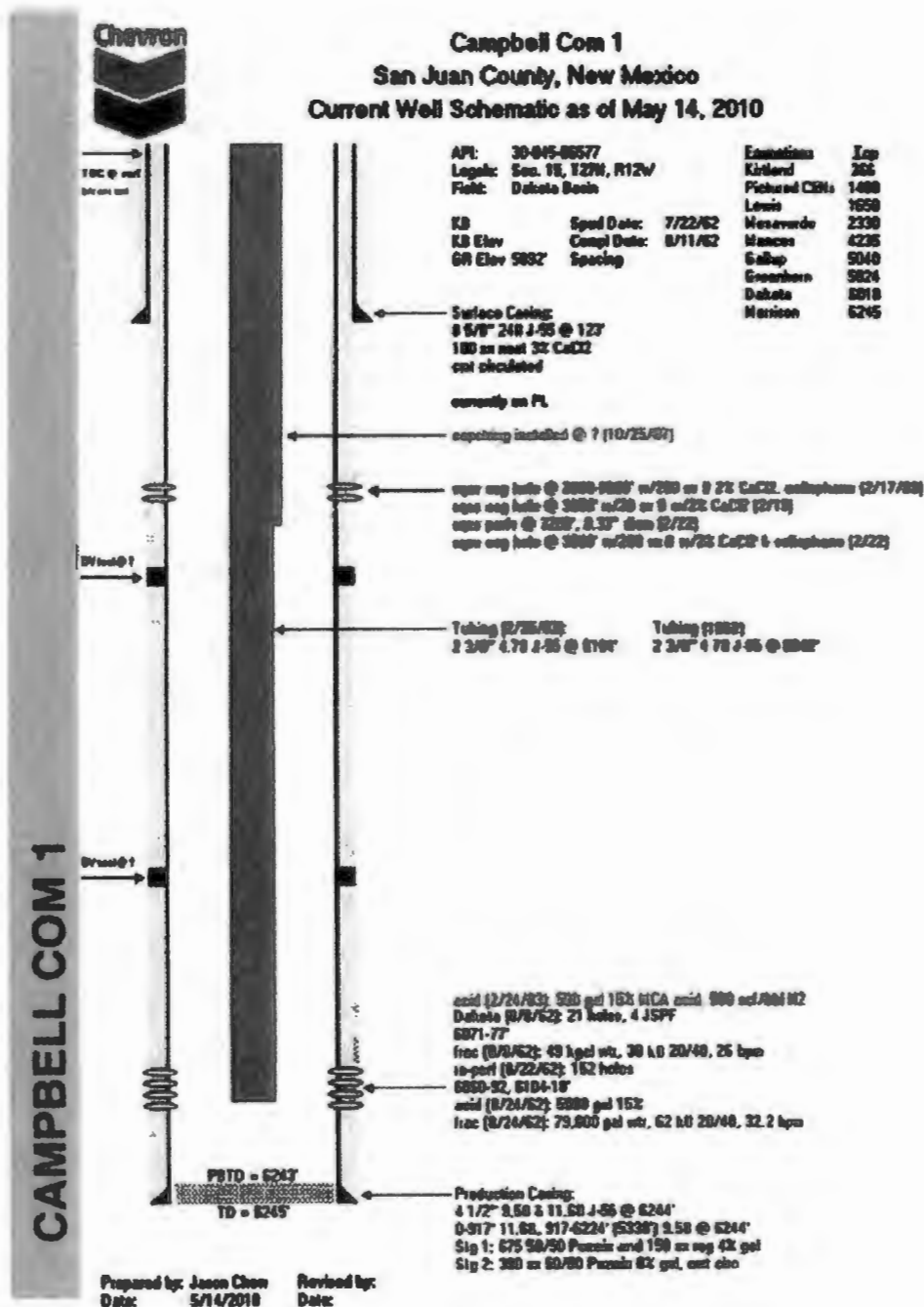
## CAMPBELL COM 1 PA PROCEDURE

1. MIRU well servicing rig and cement equipment.
2. ND WH, NU BOPE, RU rig floor and 2.375" handling tools.
3. LD production string removing capstring off tubing and dispose of.
4. Tally, PU & RIH with 2-3/8" workstring and 4-1/2" casing scraper to 6030'.
5. TOOH with casing scraper.
6. 62TIH with 4-1/2" CICR and set @6010'.
7. *Pressure test tubing prior to pumping cement to 1000 psi. Roll well and test casing to 1000psi. (WOC to be determined if test holds).*
8. **Plug #1, 5910' - 6010' (Dakota Top: 6018', Perfs: 6060' - 6110'):** Mix & pump 8 sxs of Class B cement (or equivalent) on top of CIBP to plug off Dakota perfs. Pull up and reverse circulate.
9. LD tubing to 5115'.
10. **Plug #2, 4965' - 5115' (Gallup Top: 5040'):** Spot balanced plug using 12 sxs Class B cement to cover Gallup top.
11. PUH and reverse circulate tubing clean.
12. TOOH (during WOC) and LD setting tool and TIH open ended. TIH to confirm top of plug. Re- spot if necessary.
13. **Plug #3, 4160' - 4310' (Mancos: 4235'):** Spot balanced plug using 12 sxs Class B cement to cover Mancos top. PUH and reverse circulate.
14. LD tubing to 2405'.
15. **Plug #4, 2255' - 2405' (Mesaverde Top: 2330'):** Spot balanced plug using 12 sxs Class B cement to cover Mesaverde top. PUH and reverse circulate. WOC. TIH to confirm top of plug. Re- spot if necessary.
16. LD tubing to 1725'.
17. **Plug #5, 1413' - 1725' (Pictured Cliffs and Lewis Tops: 1488'/ 1650'):** Spot balanced plug using 25 sxs Class B cement to cover Pictured Cliffs and Lewis tops. PUH. WOC. TIH to confirm top of plug. Re- spot if necessary.
18. LD tubing to 441'.
19. **Plug #6, Surface - 441' (Surface Shoe and Ojo Alamo Tops, 75'/ 123'):** Mix approximately 34 sxs of cement. Spot the surface plug to cover a minimum of 441' to surface and top off as necessary.
20. ND BOP and cut off wellhead below surface casing flange per regulation. Install P&A marker with cement to comply with regulations. RD, MOL and cut off anchors. Restore location per BLM stipulations.



**Enduring Resources  
Plug & Abandon Procedure  
July 28, 2018**

<b>Well:</b>	Campbell Com 1	<b>API:</b>	30-045-06577
<b>Location:</b>	990' FNL & 1650' FEL	<b>Field:</b>	Basin Dakota
<b>Sec, T, R:</b>	Sec. 15, T27N, R9W	<b>Elevation:</b>	GL: 5892'
<b>Cnty/State:</b>	San Juan, New Mexico	<b>By:</b>	Aztec Well Servicing
<b>Lat/Long:</b>	36.5797157, -108.0956345		

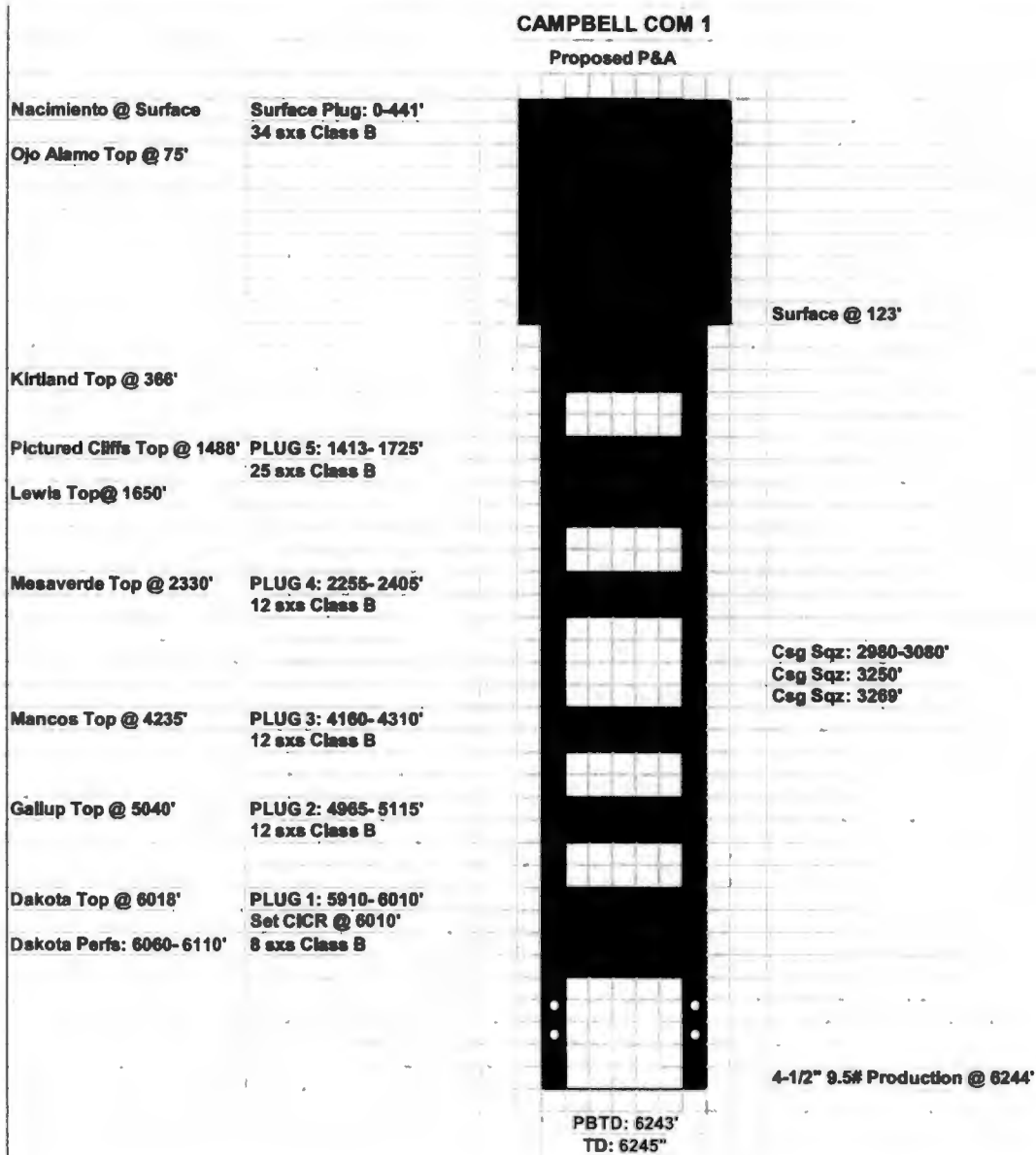


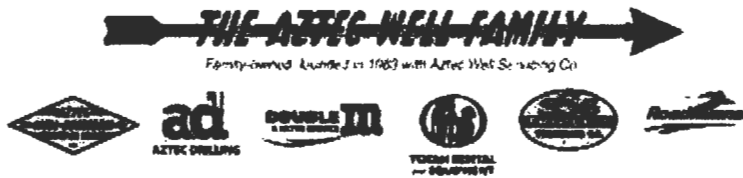


## Enduring Resources Plug & Abandon Procedure July 28, 2018

**Well:** Campbell Com 1  
**Location:** 990' FNL & 1650' FEL  
**Sec, T, R:** Sec. 15, T27N, R9W  
**Cnty/State:** San Juan, New Mexico  
**Lat/Long:** 36.5797157, -108.0956345

**API:** 30-045-06577  
**Field:** Basin Dakota  
**Elevation:** GL: 5892'  
**By:** Aztec Well Servicing





**Enduring Resources**  
**Plug & Abandon Procedure**  
 July 28, 2018

<b>Well:</b>	Campbell Com 1	<b>API:</b>	30-045-06577
<b>Location:</b>	990' FNL & 1650' FEL	<b>Field:</b>	Basin Dakota
<b>Sec,T, R:</b>	Sec. 15, T27N, R9W	<b>Elevation:</b>	GL: 5892'
<b>Cnty/State:</b>	San Juan, New Mexico	<b>By:</b>	Aztec Well Servicing
<b>Lat/Long:</b>	36.5797157,-108.0956345		

Objective:

Permanently plug & abandon the well from 6110' to surface containing 6 cement plugs.

Prior to Rig:

1. Notify BLM & NMOCD
2. Note: verify all cement volumes based on actual slurry to be pumped.
3. See attached COA's from BLM & NMOCD.

Notes:

Well has 2-3/8" tubing in the hole and may have a capstring installed at an unknown depth.

Procedure:

1. MIRU well servicing rig and cement equipment.
2. ND WH, NU BOPE, RU rig floor and 2.375" handling tools.
3. LD production string removing capstring off tubing and dispose of.
4. Tally, PU & RIH with 2-3/8" workstring and 4-1/2" casing scraper to 6030'.
5. TOOH with casing scraper.
6. 62TIH with 4-1/2" CICR and set @6010'.
7. *Pressure test tubing prior to pumping cement to 1000 psi.* Roll well and test casing to 1000psi. (WOC to be determined if test holds).
8. **Plug #1, 5910' - 6010' (Dakota Top: 6018', Perfs: 6060' - 6110'):** Mix & pump 8 sxs of Class B cement (or equivalent) on top of CIBP to plug off Dakota perfs. Pull up and reverse circulate.
9. LD tubing to 5115'.
10. **Plug #2, 4965' - 5115' (Gallup Top: 5040'):** Spot balanced plug using 12 sxs Class B cement to cover Gallup top.
11. PUH and reverse circulate tubing clean.
12. TOOH (during WOC) and LD setting tool and TIH open ended. TIH to confirm top of plug. Re- spot if necessary.
13. **Plug #3, 4160' - 4310' (Mancos: 4235'):** Spot balanced plug using 12 sxs Class B cement to cover Mancos top. PUH and reverse circulate.
14. LD tubing to 2405'.





Family-owned & founded in 1983 with Aztec Well Servicing Co.



**Enduring Resources**  
**Plug & Abandon Procedure**  
July 28, 2018

<b>Well:</b>	Campbell Com 1	<b>API:</b>	30-045-06577
<b>Location:</b>	990' FNL & 1650' FEL	<b>Field:</b>	Basin Dakota
<b>Sec,T, R:</b>	Sec. 15, T27N, R9W	<b>Elevation:</b>	GL: 5892'
<b>Cnty/State:</b>	San Juan, New Mexico		
<b>Lat/Long:</b>	36.5797157,-108.0956345	<b>By:</b>	Aztec Well Servicing

---

15. **Plug #4, 2255' – 2405' (Mesaverde Top: 2330'):** Spot balanced plug using 12 sxs Class B cement to cover Mesaverde top. PUH and reverse circulate. WOC. TIH to confirm top of plug. Re- spot if necessary.
16. LD tubing to 1725'.
17. **Plug #5, 1413' – 1725' (Pictured Cliffs and Lewis Tops: 1488'/ 1650'):** Spot balanced plug using 25 sxs Class B cement to cover Pictured Cliffs and Lewis tops. PUH. WOC. TIH to confirm top of plug. Re- spot if necessary.
18. LD tubing to 441'.
19. **Plug #6, Surface – 441' (Surface Shoe and Ojo Alamo Tops, 75'/ 123'):** Mix approximately 34 sxs of cement. Spot the surface plug to cover a minimum of 441' to surface and top off as necessary.
20. ND BOP and cut off wellhead below surface casing flange per regulation. Install P&A marker with cement to comply with regulations. RD, MOL and cut off anchors. Restore location per BLM stipulations.

UNITED STATES DEPARTMENT OF THE INTERIOR  
BUREAU OF LAND MANAGEMENT  
FARMINGTON DISTRICT OFFICE  
6251 COLLEGE BLVD.  
FARMINGTON, NEW MEXICO 87402

Attachment to notice of  
Intention to Abandon:

Re: Permanent Abandonment  
Well: Campbell Com 1

CONDITIONS OF APPROVAL

1. Plugging operations authorized are subject to the attached "General Requirements for Permanent Abandonment of Wells on Federal and Indian Lease."

2. Farmington Office is to be notified at least 24 hours before the plugging operations commence (505) 564-7750.

3. The following modifications to your plugging program are to be made:

- a) Set Plug #1 (6010 – 5905) ft. to cover the Graneros top. BLM picks Graneros top at 5955 ft.
- b) Set Plug #5 (1497 – 1407) ft. to cover the Pictured Cliffs top. BLM picks Pictured Cliffs top at 1447 ft.
- c) Add a cement plug (1212 – 1112) to cover the Fruitland top. BLM picks top of Fruitland at 1162 ft.

Operator must run CBL to surface to identify TOC. Submit the electronic copy of the log for verification to the following addresses: [jwsavage@blm.gov](mailto:jwsavage@blm.gov) [Brandon.Powell@state.nm.us](mailto:Brandon.Powell@state.nm.us)

You are also required to place cement excesses per 4.2 and 4.4 of the attached General Requirements.

Office Hours: 7:45 a.m. to 4:30 p.m.

WMOCD  
OCT 22 2018  
DISTRICT III