

District I  
1625 N. French Dr., Hobbs, NM 88240  
District II  
811 S. First St., Artesia, NM 88210  
District III  
1000 Rio Brazos Road, Aztec, NM 87410  
District IV  
1220 S. St. Francis Dr., Santa Fe, NM 87505

State of New Mexico  
Energy Minerals and Natural Resources  
Department  
Oil Conservation Division  
1220 South St. Francis Dr.  
Santa Fe, NM 87505

Form C-144  
Revised April 3, 2017

**For temporary pits, below-grade tanks, and multi-well fluid management pits**, submit to the appropriate NMOC District Office.  
**For permanent pits** submit to the Santa Fe Environmental Bureau office and provide a copy to the appropriate NMOC District Office.

Pit, Below-Grade Tank, or

BGT 3

Proposed Alternative Method Permit or Closure Plan Application

Type of action: ☐ Below grade tank registration  
☐ Permit of a pit or proposed alternative method  
☒ Closure of a pit, below-grade tank, or proposed alternative method  
☐ Modification to an existing permit/or registration  
☐ Closure plan only submitted for an existing permitted or non-permitted pit, below-grade tank, or proposed alternative method

**Instructions: Please submit one application (Form C-144) per individual pit, below-grade tank or alternative request**

Please be advised that approval of this request does not relieve the operator of liability should operations result in pollution of surface water, ground water or the environment. Nor does approval relieve the operator of its responsibility to comply with any other applicable governmental authority's rules, regulations or ordinances.

1.  
Operator: \_\_\_\_\_ Harvest Four Corners, LLC \_\_\_\_\_ OGRID #: \_\_\_\_\_  
Address: \_\_\_\_\_ 1755 Arroyo Drive, Bloomfield NM 87413 \_\_\_\_\_  
Facility or well name: \_\_\_\_\_ Miller Gas Com 1 BGT \_\_\_\_\_  
API Number: \_\_\_\_\_ NA On Howell GC #1 Well Site 30-045-27533) \_\_\_\_\_ OCD Permit Number: BGT 3  
U/L or Qtr/Qtr \_\_\_\_\_ SE/NW \_\_\_\_\_ Section 10 Township 30N Range 8W County: San Juan  
Center of Proposed Design: Latitude 36.827321 Longitude -107.659919 NAD83  
Surface Owner: ☐ Federal ☐ State ☒ Private ☐ Tribal Trust or Indian Allotment

2.  
☐ **Pit:** Subsection F, G or J of 19.15.17.11 NMAC  
Temporary: ☐ Drilling ☐ Workover  
☐ Permanent ☐ Emergency ☐ Cavitation ☐ P&A ☐ Multi-Well Fluid Management Low Chloride Drilling Fluid ☐ yes ☐ no  
☐ Lined ☐ Unlined Liner type: Thickness \_\_\_\_\_ mil ☐ LLDPE ☐ HDPE ☐ PVC ☐ Other \_\_\_\_\_  
☐ String-Reinforced  
Liner Seams: ☐ Welded ☐ Factory ☐ Other \_\_\_\_\_ Volume: \_\_\_\_\_ bbl Dimensions: L \_\_\_\_\_ x W \_\_\_\_\_ x D \_\_\_\_\_

3.  
☒ **Below-grade tank:** Subsection I of 19.15.17.11 NMAC  
Volume: \_\_\_\_\_ 95 \_\_\_\_\_ bbl Type of fluid: \_\_\_\_\_ Produced Water \_\_\_\_\_  
Tank Construction material: \_\_\_\_\_ Steel \_\_\_\_\_  
☐ Secondary containment with leak detection ☐ Visible sidewalls, liner, 6-inch lift and automatic overflow shut-off  
☐ Visible sidewalls and liner ☐ Visible sidewalls only ☒ Other \_\_\_\_\_ Double walled/ Double bottom \_\_\_\_\_  
Liner type: Thickness \_\_\_\_\_ mil ☐ HDPE ☐ PVC ☐ Other \_\_\_\_\_

4.  
☐ **Alternative Method:**  
Submittal of an exception request is required. Exceptions must be submitted to the Santa Fe Environmental Bureau office for consideration of approval.

5.  
**Fencing:** Subsection D of 19.15.17.11 NMAC (*Applies to permanent pits, temporary pits, and below-grade tanks*)  
☐ Chain link, six feet in height, two strands of barbed wire at top (*Required if located within 1000 feet of a permanent residence, school, hospital, institution or church*)  
☒ Four foot height, four strands of barbed wire evenly spaced between one and four feet  
☐ Alternate. Please specify \_\_\_\_\_

6.

**Netting:** Subsection E of 19.15.17.11 NMAC (*Applies to permanent pits and permanent open top tanks*)

☐ Screen ☒ Netting ☐ Other Steel Mesh

☐ Monthly inspections (If netting or screening is not physically feasible)

7.

**Signs:** Subsection C of 19.15.17.11 NMAC

☒ 12"x 24", 2" lettering, providing Operator's name, site location, and emergency telephone numbers

☐ Signed in compliance with 19.15.16.8 NMAC

8.

**Variances and Exceptions:**

Justifications and/or demonstrations of equivalency are required. Please refer to 19.15.17 NMAC for guidance.

***Please check a box if one or more of the following is requested, if not leave blank:***

☐ Variance(s): Requests must be submitted to the appropriate division district for consideration of approval.

☐ Exception(s): Requests must be submitted to the Santa Fe Environmental Bureau office for consideration of approval.

9.

**Siting Criteria (regarding permitting):** 19.15.17.10 NMAC

***Instructions: The applicant must demonstrate compliance for each siting criteria below in the application. Recommendations of acceptable source material are provided below. Siting criteria does not apply to drying pads or above-grade tanks.***

**General siting**

**Ground water is less than 25 feet below the bottom of a low chloride temporary pit or below-grade tank.**

- ☒ NM Office of the State Engineer - iWATERS database search; ☒ USGS; ☐ Data obtained from nearby wells

☐ Yes ☒ No  
☐ NA

**Ground water is less than 50 feet below the bottom of a Temporary pit, permanent pit, or Multi-Well Fluid Management pit .**

NM Office of the State Engineer - iWATERS database search; USGS; Data obtained from nearby wells

☐ Yes ☐ No  
☒ NA

Within incorporated municipal boundaries or within a defined municipal fresh water well field covered under a municipal ordinance adopted pursuant to NMSA 1978, Section 3-27-3, as amended. **(Does not apply to below grade tanks)**

- Written confirmation or verification from the municipality; Written approval obtained from the municipality

☐ Yes ☐ No

Within the area overlying a subsurface mine. **(Does not apply to below grade tanks)**

- Written confirmation or verification or map from the NM EMNRD-Mining and Mineral Division

☐ Yes ☐ No

Within an unstable area. **(Does not apply to below grade tanks)**

- Engineering measures incorporated into the design; NM Bureau of Geology & Mineral Resources; USGS; NM Geological Society; Topographic map

☐ Yes ☐ No

Within a 100-year floodplain. **(Does not apply to below grade tanks)**

- FEMA map

☐ Yes ☐ No

**Below Grade Tanks**

Within 100 feet of a continuously flowing watercourse, significant watercourse, lake bed, sinkhole, wetland or playa lake (measured from the ordinary high-water mark).

- Topographic map; Visual inspection (certification) of the proposed site

☐ Yes ☒ No

Within 200 horizontal feet of a spring or a fresh water well used for public or livestock consumption;.

- NM Office of the State Engineer - iWATERS database search; Visual inspection (certification) of the proposed site

☐ Yes ☒ No

**Temporary Pit using Low Chloride Drilling Fluid** (maximum chloride content 15,000 mg/liter)

Within 100 feet of a continuously flowing watercourse, or any other significant watercourse or within 200 feet of any lakebed, sinkhole, or playa lake (measured from the ordinary high-water mark). (Applies to low chloride temporary pits.)

- Topographic map; Visual inspection (certification) of the proposed site

☐ Yes ☐ No

Within 300 feet from a occupied permanent residence, school, hospital, institution, or church in existence at the time of initial application.

- Visual inspection (certification) of the proposed site; Aerial photo; Satellite image

☐ Yes ☐ No

Within 200 horizontal feet of a spring or a private, domestic fresh water well used by less than five households for domestic or stock watering purposes, or 300feet of any other fresh water well or spring, in existence at the time of the initial application.

NM Office of the State Engineer - iWATERS database search; Visual inspection (certification) of the proposed site

☐ Yes ☐ No

Within 100 feet of a wetland.

- US Fish and Wildlife Wetland Identification map; Topographic map; Visual inspection (certification) of the proposed site

☐ Yes ☐ No

### **Temporary Pit Non-low chloride drilling fluid**

Within 300 feet of a continuously flowing watercourse, or any other significant watercourse, or within 200 feet of any lakebed, sinkhole, or playa lake (measured from the ordinary high-water mark).

- Topographic map; Visual inspection (certification) of the proposed site

☐ Yes ☐ No

Within 300 feet from a permanent residence, school, hospital, institution, or church in existence at the time of initial application.

- Visual inspection (certification) of the proposed site; Aerial photo; Satellite image

☐ Yes ☐ No

Within 500 horizontal feet of a spring or a private, domestic fresh water well used by less than five households for domestic or stock watering purposes, or 1000 feet of any other fresh water well or spring, in the existence at the time of the initial application;

- NM Office of the State Engineer - iWATERS database search; Visual inspection (certification) of the proposed site

☐ Yes ☐ No

Within 300 feet of a wetland.

- US Fish and Wildlife Wetland Identification map; Topographic map; Visual inspection (certification) of the proposed site

☐ Yes ☐ No

### **Permanent Pit or Multi-Well Fluid Management Pit**

Within 300 feet of a continuously flowing watercourse, or 200 feet of any other significant watercourse, or lakebed, sinkhole, or playa lake (measured from the ordinary high-water mark).

- Topographic map; Visual inspection (certification) of the proposed site

☐ Yes ☐ No

Within 1000 feet from a permanent residence, school, hospital, institution, or church in existence at the time of initial application.

- Visual inspection (certification) of the proposed site; Aerial photo; Satellite image

☐ Yes ☐ No

Within 500 horizontal feet of a spring or a fresh water well used for domestic or stock watering purposes, in existence at the time of initial application.

- NM Office of the State Engineer - iWATERS database search; Visual inspection (certification) of the proposed site

☐ Yes ☐ No

Within 500 feet of a wetland.

- US Fish and Wildlife Wetland Identification map; Topographic map; Visual inspection (certification) of the proposed site

☐ Yes ☐ No

10.

#### **Temporary Pits, Emergency Pits, and Below-grade Tanks Permit Application Attachment Checklist:** Subsection B of 19.15.17.9 NMAC

**Instructions:** Each of the following items must be attached to the application. Please indicate, by a check mark in the box, that the documents are attached.

- ☒ Hydrogeologic Report (Below-grade Tanks) - based upon the requirements of Paragraph (4) of Subsection B of 19.15.17.9 NMAC
- ☐ Hydrogeologic Data (Temporary and Emergency Pits) - based upon the requirements of Paragraph (2) of Subsection B of 19.15.17.9 NMAC
- ☒ Siting Criteria Compliance Demonstrations - based upon the appropriate requirements of 19.15.17.10 NMAC
- ☒ Design Plan - based upon the appropriate requirements of 19.15.17.11 NMAC
- ☒ Operating and Maintenance Plan - based upon the appropriate requirements of 19.15.17.12 NMAC
- ☒ Closure Plan (Please complete Boxes 14 through 18, if applicable) - based upon the appropriate requirements of Subsection C of 19.15.17.9 NMAC and 19.15.17.13 NMAC

☐ Previously Approved Design (attach copy of design) API Number: \_\_\_\_\_ or Permit Number: \_\_\_\_\_

11.

#### **Multi-Well Fluid Management Pit Checklist:** Subsection B of 19.15.17.9 NMAC

**Instructions:** Each of the following items must be attached to the application. Please indicate, by a check mark in the box, that the documents are attached.

- ☐ Design Plan - based upon the appropriate requirements of 19.15.17.11 NMAC
- ☐ Operating and Maintenance Plan - based upon the appropriate requirements of 19.15.17.12 NMAC
- ☐ A List of wells with approved application for permit to drill associated with the pit.
- ☐ Closure Plan (Please complete Boxes 14 through 18, if applicable) - based upon the appropriate requirements of Subsection C of 19.15.17.9 NMAC and 19.15.17.13 NMAC
- ☐ Hydrogeologic Data - based upon the requirements of Paragraph (4) of Subsection B of 19.15.17.9 NMAC
- ☐ Siting Criteria Compliance Demonstrations - based upon the appropriate requirements of 19.15.17.10 NMAC

☐ Previously Approved Design (attach copy of design) API Number: \_\_\_\_\_ or Permit Number: \_\_\_\_\_

12.

**Permanent Pits Permit Application Checklist:** Subsection B of 19.15.17.9 NMAC

**Instructions:** Each of the following items must be attached to the application. Please indicate, by a check mark in the box, that the documents are attached.

- ☐ Hydrogeologic Report - based upon the requirements of Paragraph (1) of Subsection B of 19.15.17.9 NMAC  
☐ Siting Criteria Compliance Demonstrations - based upon the appropriate requirements of 19.15.17.10 NMAC  
☐ Climatological Factors Assessment  
☐ Certified Engineering Design Plans - based upon the appropriate requirements of 19.15.17.11 NMAC  
☐ Dike Protection and Structural Integrity Design - based upon the appropriate requirements of 19.15.17.11 NMAC  
☐ Leak Detection Design - based upon the appropriate requirements of 19.15.17.11 NMAC  
☐ Liner Specifications and Compatibility Assessment - based upon the appropriate requirements of 19.15.17.11 NMAC  
☐ Quality Control/Quality Assurance Construction and Installation Plan  
☐ Operating and Maintenance Plan - based upon the appropriate requirements of 19.15.17.12 NMAC  
☐ Freeboard and Overtopping Prevention Plan - based upon the appropriate requirements of 19.15.17.11 NMAC  
☐ Nuisance or Hazardous Odors, including H<sub>2</sub>S, Prevention Plan  
☐ Emergency Response Plan  
☐ Oil Field Waste Stream Characterization  
☐ Monitoring and Inspection Plan  
☐ Erosion Control Plan  
☐ Closure Plan - based upon the appropriate requirements of Subsection C of 19.15.17.9 NMAC and 19.15.17.13 NMAC

13.

**Proposed Closure:** 19.15.17.13 NMAC

**Instructions:** Please complete the applicable boxes, Boxes 14 through 18, in regards to the proposed closure plan.

- Type: ☐ Drilling ☐ Workover ☐ Emergency ☐ Cavitation ☐ P&A ☐ Permanent Pit ☒ Below-grade Tank ☐ Multi-well Fluid Management Pit  
☐ Alternative
- Proposed Closure Method: ☐ Waste Excavation and Removal  
☐ Waste Removal (Closed-loop systems only)  
☐ On-site Closure Method (Only for temporary pits and closed-loop systems)  
☐ In-place Burial ☐ On-site Trench Burial  
☐ Alternative Closure Method

14.

**Waste Excavation and Removal Closure Plan Checklist:** (19.15.17.13 NMAC) **Instructions:** Each of the following items must be attached to the closure plan. Please indicate, by a check mark in the box, that the documents are attached.

- ☒ Protocols and Procedures - based upon the appropriate requirements of 19.15.17.13 NMAC  
☒ Confirmation Sampling Plan (if applicable) - based upon the appropriate requirements of Subsection C of 19.15.17.13 NMAC  
☒ Disposal Facility Name and Permit Number (for liquids, drilling fluids and drill cuttings)  
☒ Soil Backfill and Cover Design Specifications - based upon the appropriate requirements of Subsection H of 19.15.17.13 NMAC  
☒ Re-vegetation Plan - based upon the appropriate requirements of Subsection H of 19.15.17.13 NMAC  
☒ Site Reclamation Plan - based upon the appropriate requirements of Subsection H of 19.15.17.13 NMAC

15.

**Siting Criteria (regarding on-site closure methods only):** 19.15.17.10 NMAC

**Instructions:** Each siting criteria requires a demonstration of compliance in the closure plan. Recommendations of acceptable source material are provided below. Requests regarding changes to certain siting criteria require justifications and/or demonstrations of equivalency. Please refer to 19.15.17.10 NMAC for guidance.

Ground water is less than 25 feet below the bottom of the buried waste. - NM Office of the State Engineer - iWATERS database search; USGS; Data obtained from nearby wells	<input type="checkbox"/> Yes <input type="checkbox"/> No <input type="checkbox"/> NA
Ground water is between 25-50 feet below the bottom of the buried waste - NM Office of the State Engineer - iWATERS database search; USGS; Data obtained from nearby wells	<input type="checkbox"/> Yes <input type="checkbox"/> No <input type="checkbox"/> NA
Ground water is more than 100 feet below the bottom of the buried waste. - NM Office of the State Engineer - iWATERS database search; USGS; Data obtained from nearby wells	<input type="checkbox"/> Yes <input type="checkbox"/> No <input type="checkbox"/> NA
Within 100 feet of a continuously flowing watercourse, or 200 feet of any other significant watercourse, lakebed, sinkhole, or playa lake (measured from the ordinary high-water mark). - Topographic map; Visual inspection (certification) of the proposed site	<input type="checkbox"/> Yes <input type="checkbox"/> No
Within 300 feet from a permanent residence, school, hospital, institution, or church in existence at the time of initial application. - Visual inspection (certification) of the proposed site; Aerial photo; Satellite image	<input type="checkbox"/> Yes <input type="checkbox"/> No
Within 300 horizontal feet of a private, domestic fresh water well or spring used for domestic or stock watering purposes, in existence at the time of initial application. - NM Office of the State Engineer - iWATERS database; Visual inspection (certification) of the proposed site	<input type="checkbox"/> Yes <input type="checkbox"/> No
Written confirmation or verification from the municipality; Written approval obtained from the municipality	<input type="checkbox"/> Yes <input type="checkbox"/> No
Within 300 feet of a wetland. US Fish and Wildlife Wetland Identification map; Topographic map; Visual inspection (certification) of the proposed site	<input type="checkbox"/> Yes <input type="checkbox"/> No
Within incorporated municipal boundaries or within a defined municipal fresh water well field covered under a municipal ordinance	


adopted pursuant to NMSA 1978, Section 3-27-3, as amended. - Written confirmation or verification from the municipality; Written approval obtained from the municipality	<input type="checkbox"/> Yes <input type="checkbox"/> No
Within the area overlying a subsurface mine. - Written confirmation or verification or map from the NM EMNRD-Mining and Mineral Division	<input type="checkbox"/> Yes <input type="checkbox"/> No
Within an unstable area. - Engineering measures incorporated into the design; NM Bureau of Geology & Mineral Resources; USGS; NM Geological Society; Topographic map	<input type="checkbox"/> Yes <input type="checkbox"/> No
Within a 100-year floodplain. - FEMA map	<input type="checkbox"/> Yes <input type="checkbox"/> No

16.  
**On-Site Closure Plan Checklist:** (19.15.17.13 NMAC) *Instructions: Each of the following items must be attached to the closure plan. Please indicate, by a check mark in the box, that the documents are attached.*

<input type="checkbox"/> Siting Criteria Compliance Demonstrations - based upon the appropriate requirements of 19.15.17.10 NMAC
<input type="checkbox"/> Proof of Surface Owner Notice - based upon the appropriate requirements of Subsection E of 19.15.17.13 NMAC
<input type="checkbox"/> Construction/Design Plan of Burial Trench (if applicable) based upon the appropriate requirements of Subsection K of 19.15.17.11 NMAC
<input type="checkbox"/> Construction/Design Plan of Temporary Pit (for in-place burial of a drying pad) - based upon the appropriate requirements of 19.15.17.11 NMAC
<input type="checkbox"/> Protocols and Procedures - based upon the appropriate requirements of 19.15.17.13 NMAC
<input type="checkbox"/> Confirmation Sampling Plan (if applicable) - based upon the appropriate requirements of 19.15.17.13 NMAC
<input type="checkbox"/> Waste Material Sampling Plan - based upon the appropriate requirements of 19.15.17.13 NMAC
<input type="checkbox"/> Disposal Facility Name and Permit Number (for liquids, drilling fluids and drill cuttings or in case on-site closure standards cannot be achieved)
<input type="checkbox"/> Soil Cover Design - based upon the appropriate requirements of Subsection H of 19.15.17.13 NMAC
<input type="checkbox"/> Re-vegetation Plan - based upon the appropriate requirements of Subsection H of 19.15.17.13 NMAC
<input type="checkbox"/> Site Reclamation Plan - based upon the appropriate requirements of Subsection H of 19.15.17.13 NMAC

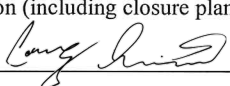
17.  
**Operator Application Certification:**  
 I hereby certify that the information submitted with this application is true, accurate and complete to the best of my knowledge and belief.

Name (Print): Kijun Hong Title: Environmental Specialist

Signature:  Date: 9/26/2019

e-mail address: khong@harvestmidstream.com Telephone: (505) 632-4475

18.  
**OCD Approval:** ☐ Permit Application (including closure plan) ☒ Closure Plan (only) ☐ OCD Conditions (see attachment)

**OCD Representative Signature:**  **Approval Date:** 10/24/19

**Title:** Environmental Specialist **OCD Permit Number:** BGT 3

19.  
**Closure Report (required within 60 days of closure completion):** 19.15.17.13 NMAC  
*Instructions: Operators are required to obtain an approved closure plan prior to implementing any closure activities and submitting the closure report. The closure report is required to be submitted to the division within 60 days of the completion of the closure activities. Please do not complete this section of the form until an approved closure plan has been obtained and the closure activities have been completed.*

☐ Closure Completion Date: \_\_\_\_\_

20.  
**Closure Method:**  
 Waste Excavation and Removal ☐ On-Site Closure Method ☐ Alternative Closure Method ☐ Waste Removal (Closed-loop systems only)  
☐ If different from approved plan, please explain.

21.  
**Closure Report Attachment Checklist:** *Instructions: Each of the following items must be attached to the closure report. Please indicate, by a check mark in the box, that the documents are attached.*

<input type="checkbox"/> Proof of Closure Notice (surface owner and division)
<input type="checkbox"/> Proof of Deed Notice (required for on-site closure for private land only)
<input type="checkbox"/> Plot Plan (for on-site closures and temporary pits)
<input type="checkbox"/> Confirmation Sampling Analytical Results (if applicable)
<input type="checkbox"/> Waste Material Sampling Analytical Results (required for on-site closure)
<input type="checkbox"/> Disposal Facility Name and Permit Number
<input type="checkbox"/> Soil Backfilling and Cover Installation
<input type="checkbox"/> Re-vegetation Application Rates and Seeding Technique
<input type="checkbox"/> Site Reclamation (Photo Documentation)

On-site Closure Location: Latitude \_\_\_\_\_ Longitude \_\_\_\_\_ NAD: ☐ 1927 ☐ 1983

22.

**Operator Closure Certification:**

I hereby certify that the information and attachments submitted with this closure report is true, accurate and complete to the best of my knowledge and belief. I also certify that the closure complies with all applicable closure requirements and conditions specified in the approved closure plan.

Name (Print): Kijun Hong Title: Environmental Specialist

Signature: \_\_\_\_\_ Date: \_\_\_\_\_

e-mail address: khong@harvestmidstream.com Telephone: (505) 632-4475

**SITING CRITERIA  
SUMMARY INFORMATION SHEET  
19.15.17.10 NMAC**



**LT Environmental Inc.**  
848 East Second Avenue  
Durango, Colorado 81301  
T 970-385-1096

**GENERAL INFORMATION**

**Site Name:**   
**Pit Type:**

**Operator:**   
**Date:**   
**Prepared by:**

**GENERAL SITE LOCATION INFORMATION**

**Geologic Formation:**

**SEC:**

**TWN:**

**RNG:**

**Soil Type:**

**Latitude:**

**Longitude:**

**Annual Precipitation:**

**GENERAL SITING CRITERIA**

**Is groundwater less than 25 feet below the bottom of below grade tank?**

See Figure 3 and attached iWaters Data

**BELOW GRADE TANK SITING CRITERIA**

**Within 100 feet of a continuously flowing watercourse?**

See Figure 1

**Within 100 feet of a significant watercourse?**

See Figure 1 and Figure 3

**Within 100 feet of a lakebed, playa lake, or sinkhole?**

See Figure 2

**Within 200 horizontal feet of a spring or a freshwater well used for  
public or livestock consumption?**

See Figure 3 and attached iWaters data

**ATTACHED DOCUMENTS:**

Hydrogeologic Report

Figure 1: Topographic Map

Figure 2: Aerial Photograph

Figure 3: Water Well and Surface Water Features

iWaters Data

**ADDITIONAL COMMENTS:**

\_\_\_\_\_  
\_\_\_\_\_  
\_\_\_\_\_





## Miller Gas Com 1 Hydrogeologic Report for Siting Criteria

### General Geology and Hydrology

The San Juan Basin is a typical Rocky Mountain basin with a gently dipping southern flank and a steeply dipping northern flank. The below-grade tank is located north of the San Juan River and northwest of Navajo Dam, New Mexico. The predominant geologic formation is the Nacimiento Formation of Paleocene age, which occurs at the surface in a broad belt at the western and southern edges of the central San Juan Basin and dips beneath the San Jose Formation in the center. The lower part of the Nacimiento Formation is composed of interbedded black, carbonaceous mudstones and white coarse-grained sandstones. The upper part is comprised of mudstone and sandstone. It is generally slope-forming, even within the sandstone units. Thickness of the Nacimiento ranges from 418 to 2,232 feet.

The prominent soil type at the below-grade tank are Rock Outcrop-Travessilla-Weska Complex ([www.emnrd.state.nm.us](http://www.emnrd.state.nm.us)). Miles of arroyos, washes, and intermittent streams exist as part of the drainage network toward the San Juan River. These features often cut into soil and other unconsolidated materials, contributing to sedimentation downstream. The sudden influx of water from storm events easily erodes the soils that cover the area and prohibits effective recharge to the underlying aquifers.

Dry and arid weather further prohibits active recharge. The climate of the region is arid, averaging 12.87 inches of precipitation annually. As is typical of the southwestern United States monsoonal weather patterns, most precipitation falls from August through October. The heaviest rainfall occurs in the summer in isolated, intense cloudbursts. November through June is relatively dry. Snow generally falls from December to mid-February and averages less than one-half inch in depth. However, most recharge occurs during the winter months during snowmelt periods from the upper elevations (Western Regional Climate Center [www.wrcc.dri.edu](http://www.wrcc.dri.edu)). The predominant vegetation are sagebrush and grasses with a more restricted pinon-juniper association (Dick-Peddie, 1993).

### Site-Specific Hydrogeology

Depth to groundwater is estimated to be greater than 100 feet at the below-grade tank. This estimation is based on data from Stone and others (1983), the United States Geological Survey (USGS) *Groundwater Atlas of the United States*. Local topography and proximity to surface hydrologic features are taken into consideration. When available, permitted water well logs and cathodic protection well logs are referenced to infer depth to groundwater near the site.

Aquifers within the coarser and continuous sandstone bodies of the Nacimiento Formation are between 0 and 1,000 feet deep in this section of the San Juan Basin. Wells within these bodies flow from 16 to





100 gallons per minute (gpm) and transmissivities are expected to be 100 ft<sup>2</sup>/d (Stone et al, 1983). Groundwater within these aquifers flows toward the San Juan River.

The below-grade tank is located in a region incised by canyons, washes, gullies, and arroyos, with the San Juan River being the predominant topographic feature. The mesas are composed of cliff-forming sandstone, and systems of dry washes and their tributaries composed of alluvium are evident on the attached aerial image. The site is located at an elevation of approximately 5,836 feet on Pump Mesa, adjacent to Simon Canyon a tributary of the San Juan River. An elevation difference between the site and the primary channel of Simon Canyon of 112 feet suggests groundwater is greater than 100 feet beneath the below-grade tank.

Groundwater data available from the New Mexico State Engineer's iWaters database for wells near the below-grade tank are attached. Groundwater data are sparse in this region; the nearest iWaters data point with associated depth to groundwater information is well number SJ 01022 POD 1 located approximately 0.96 miles to the southwest. The elevation of the water well is approximately 137 feet lower than the site, and depth to groundwater in the permitted water well is 10 feet below ground surface.

## References

Dane, C.H. and G.O. Bachman, 1965, *Geologic Map of New Mexico*: U.S. Geological Survey, 1 sheet, scale 1:500,000.

Dick-Peddie, W.A., 1993, *New Mexico Vegetation – Past, Present and Future*: Albuquerque, New Mexico, University of New Mexico Press, 244 p.

Stone, W.J., F.P. Lyford, P.F. Frenzel, N.H. Mizell, and E.T. Padgett, 1983, *Hydrogeology and Water Resources of the San Juan Basin, New Mexico*: HR-6 New Mexico Bureau of Geology and Mineral Resources Hydrology Report 6.

USGS, [Groundwater Atlas of the United States](http://www.pubs.usgs.gov): Arizona, Colorado, New Mexico, Utah, HA 730-C: (<http://www.pubs.usgs.gov>).

Western Region Climate Center, 2008, New Mexico climate summaries: Desert Research Institute at <http://www.wrcc.dri.edu/summary/climsmnm.html>.

New Mexico Energy, Minerals and Natural Resources Department, [www.emnrd.state.nm.us](http://www.emnrd.state.nm.us).

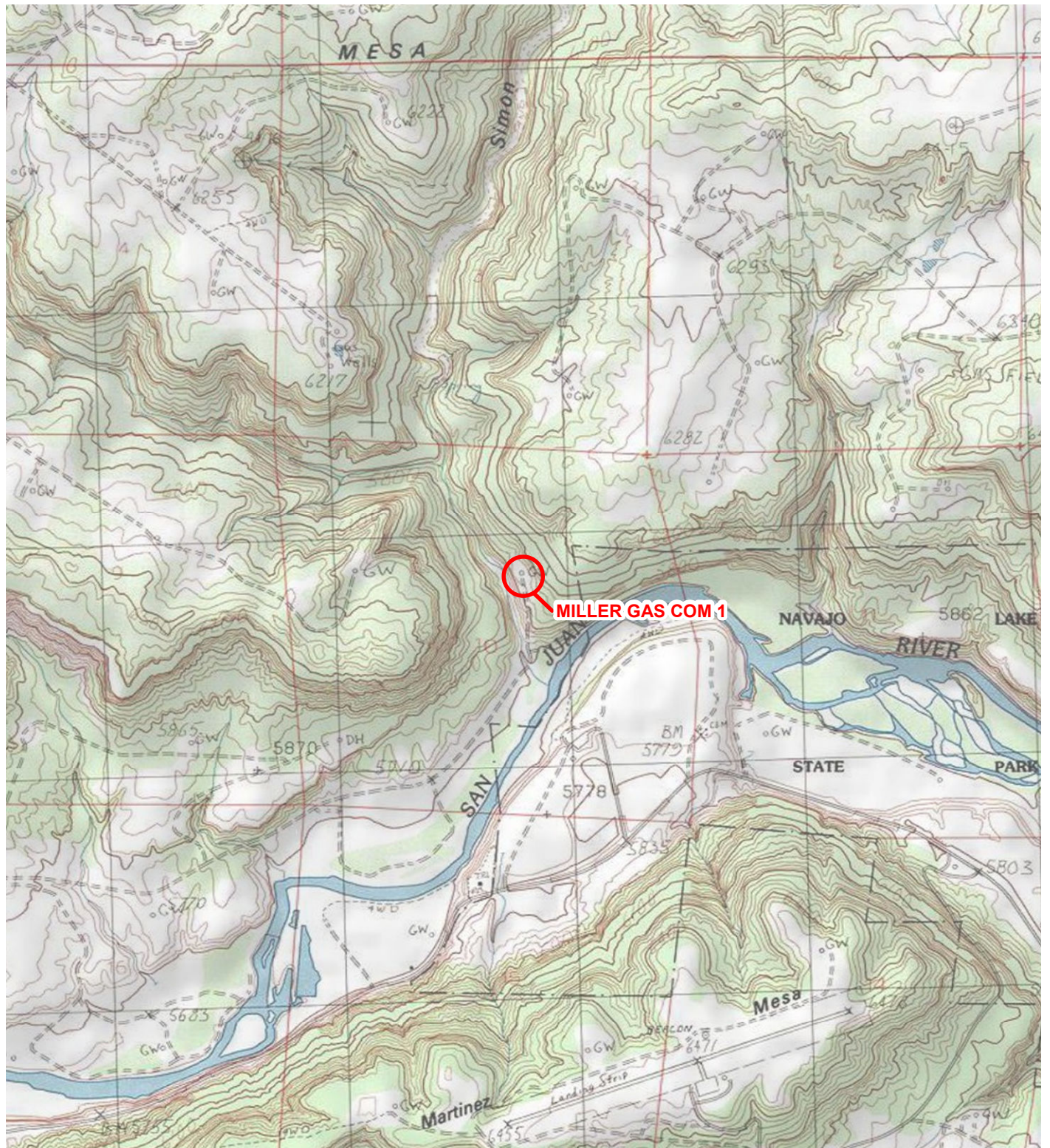


IMAGE COURTESY OF ESRI/USGS

# LEGEND

○ SITE LOCATION

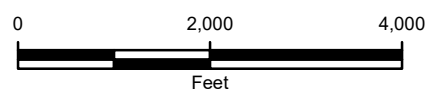


FIGURE 1  
TOPOGRAPHIC MAP  
MILLER GAS COM 1  
LOT 3 SEC 10 T30N R8W  
SAN JUAN COUNTY, NEW MEXICO  
HARVEST FOUR CORNERS, LLC.





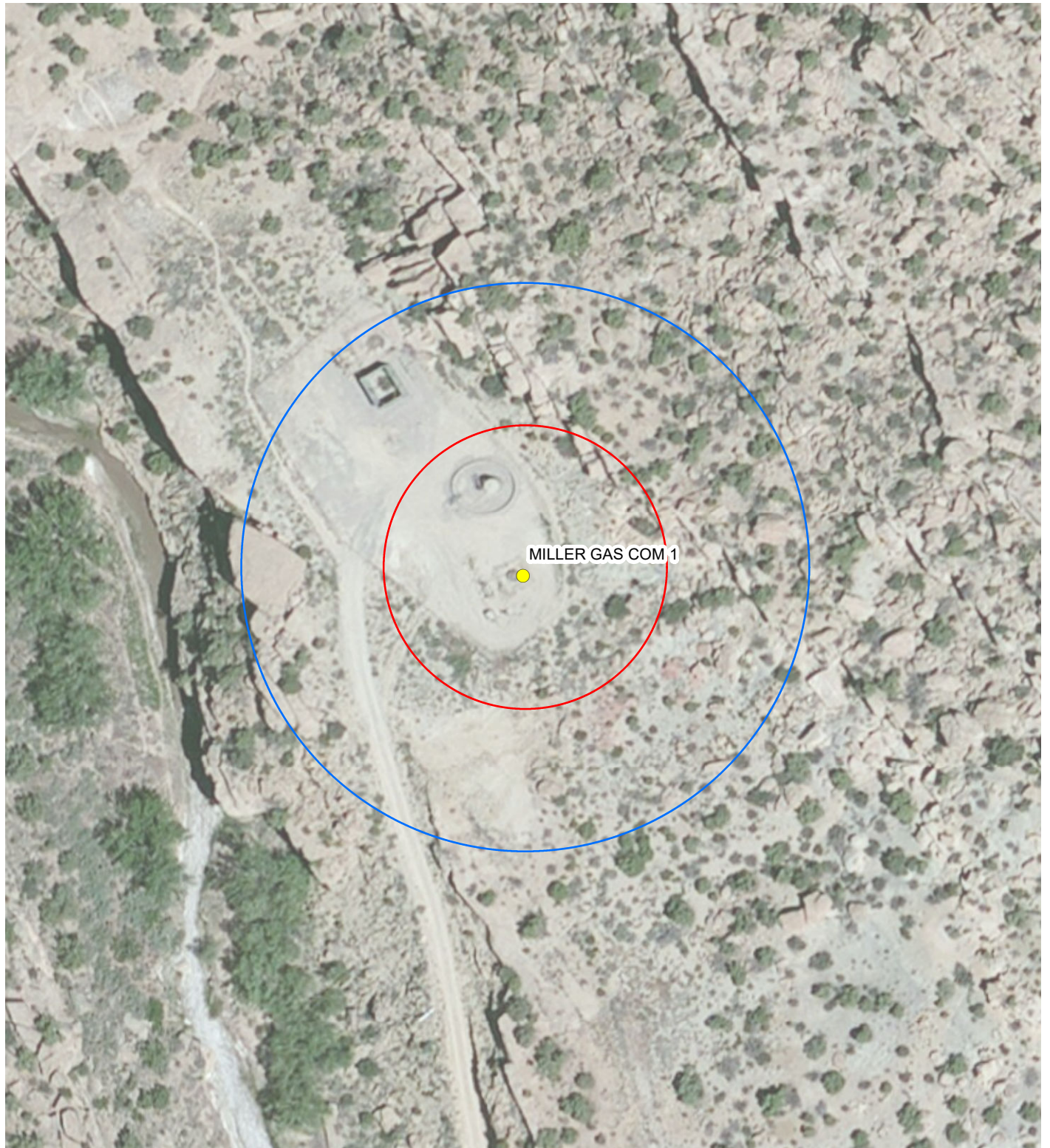


IMAGE COURTESY OF ESRI

# LEGEND

- BELOW GRADE TANK
- 100-FOOT RADIUS
- 200-FOOT RADIUS

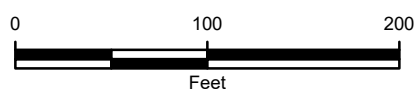


FIGURE 2  
AERIAL PHOTOGRAPHIC MAP  
MILLER GAS COM 1  
LOT 3 SEC 10 T30N R8W  
SAN JUAN COUNTY, NEW MEXICO  
HARVEST FOUR CORNERS, LLC.







IMAGE COURTESY OF ESRI

# LEGEND

- WATER WELL
- BELOW GRADE TANK
- 200-FOOT RADIUS

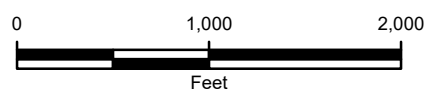


FIGURE 3  
NEARBY WATER WELL MAP  
MILLER GAS COM 1  
LOT 3 SEC 10 T30N R8W  
SAN JUAN COUNTY, NEW MEXICO  
HARVEST FOUR CORNERS, LLC.







## New Mexico Office of the State Engineer

# Water Column/Average Depth to Water

(A CLW##### in the POD suffix indicates the POD has been replaced & no longer serves a water right file.)

(R=POD has been replaced,  
O=orphaned,  
C=the file is closed)

(quarters are 1=NW 2=NE 3=SW 4=SE)

(quarters are smallest to largest) (NAD83 UTM in meters)

(In feet)

POD Number	Code	POD Sub-basin	County	Q 64	Q 16	Q 4	Sec	Tws	Rng	X	Y	Distance	DepthWell	DepthWater	Water Column
<a href="#">SJ 01022</a>		SJM2	SJ	1	15	30N	08W			262112	4077679*	1491	19	10	9
<a href="#">SJ 01209</a>		SJM2	SJ	4	4	17	30N	08W		259806	4076718*	3751	25	14	11
<a href="#">SJ 01307</a>		SJM2	SJ	4	4	17	30N	08W		259806	4076718*	3751	29	19	10
<a href="#">SJ 02807</a>		SJM2	SJ	1	4	4	17	30N	08W	259705	4076817*	3773	28	15	13
<a href="#">SJ 00556</a>		SJM2	SJ	4	1	4	17	30N	08W	259540	4077005*	3805	20	5	15
<a href="#">SJ 01858</a>		SJM2	SJ				17	30N	08W	259238	4077281*	3936	25	10	15
<a href="#">SJ 03841 POD10</a>		SJ	SJ	3	34	30N	11W			261236	4075354	3972	42	30	12
<a href="#">SJ 00090</a>		SJM2	SJ	1	3	4	17	30N	08W	259315	4076804*	4103	23	12	11
<a href="#">SJ 03603</a>		SJM2	SJ	1	3	4	17	30N	08W	259315	4076804*	4103	18	10	8
<a href="#">SJ 03841 POD3</a>		SJM2	SJ							260507	4075425	4246	40	30	10
<a href="#">SJ 03841 POD1</a>		SJM2	SJ							260421	4075469	4255	36	26	10
<a href="#">SJ 01097</a>		SJM2	SJ	2	20	30N	08W			259645	4076092*	4281	40	27	13
<a href="#">SJ 03841 POD2</a>		SJM2	SJ							260420	4075438	4281	40	30	10
<a href="#">SJ 01024</a>		SJM2	SJ	1	2	20	30N	08W		259430	4076298*	4307	115		
<a href="#">SJ 01558</a>		SJM2	SJ	1	2	20	30N	08W		259430	4076298*	4307	20	8	12
<a href="#">SJ 03694 POD1</a>		SJM2	SJ	3	2	2	27	30N	08W	262860	4074570*	4448	120	40	80
<a href="#">SJ 03155</a>		SJM2	SJ	4	2	2	27	30N	08W	263060	4074570*	4457	150	80	70
<a href="#">SJ 00198</a>		SJ	SJ	4	3	3	32	31N	08W	258895	4081451*	4575	2003		
<a href="#">SJ 03694</a>	O		SJ	2	4	2	27	30N	08W	263058	4074371*	4655	120	40	80

Average Depth to Water: **23 feet**

Minimum Depth: **5 feet**

Maximum Depth: **80 feet**

**Record Count:** 19

**UTM NAD83 Radius Search (in meters):**

**Easting (X):** 262770

**Northing (Y):** 4079018

**Radius:** 5000

\*UTM location was derived from PLSS - see Help

The data is furnished by the NMOSE/ISC and is accepted by the recipient with the expressed understanding that the OSE/ISC make no warranties, expressed or implied, concerning the accuracy, completeness, reliability, usability, or suitability for any particular purpose of the data.

6/26/19 3:56 PM

WATER COLUMN/ AVERAGE DEPTH TO WATER

**Harvest Four Corners, LLC**  
**Closure Plan - Below Grade Tanks**

In accordance with Rule 19.15.17.13 NMAC of the New Mexico Administrative Code (NMAC), the information within this document describes the closure requirements to be used by Harvest Four Corners, LLC (Harvest) when closing Below Grade Tanks (BGTs). This is Harvest's standard procedure for all BGTs. A separate closure plan will be submitted for any BGT closure which does not conform to this plan.

Pit Rule Citation (NMAC)	Rule Requirement	Operator Requirements
19.15.17.13.A	Closure Plan	This plan describes Harvest proposed closure methods and the proposed procedures and protocols to implement and complete BGT closure.
19.15.17.13.C(1)		Prior to commencing BGT closure, Harvest will obtain a NMOCD approved closure plan before any closure activities start. Harvest understands that the NMOCD considers the start of closure for a BGT is when the BGT is being removed from the ground.
19.15.17.13.C(2)		Harvest will remove liquids and sludge from a BGT prior to commencing closure actions and will dispose the material in a NMOCD approved facility.
19.15.17.13.C.3(a)		Following removal of the tank and any liner material, Harvest will test the soils beneath the BGT in accordance with 19.15.17.13.C.3(a) NMAC. Samples will be collected from beneath the liner and/or BGT for obvious stained or wet soils, or any other evidence of contamination.
19.15.17.13.C.3(b)		If any contaminant concentration is higher than the parameters listed in Table I of 19.15.17.13 NMAC, the NMOCD may require additional delineation upon review of the results and Harvest must receive approval before proceeding with closure.
19.15.17.13.C.3(c)		Upon completion of BGT removal, if all contaminant concentrations are less than or equal to the parameters listed in Table I of 19.15.17.13 NMAC, the excavation will be backfilled with non-waste contained, uncontaminated, earthen material.
19.15.17.13.E(1)	Notification	Notice of closure will be given to the surface owner at least 72 hours, but not more than one week, prior to any closure operation via Certified mail. As a variance (if approved with the closure plan), surface owners which are public entities (State, BLM, or Tribal) will be notified by email or phone. The notification of closure will include the following: operators name, well name and API number (if applicable), and location (ULSTR).
19.15.17.13.E(2)		Notice of Closure will be given to the NMOCD office at least 72 hours, but not more than one week, prior to any closure operation via Certified mail. As a variance (if approved with the closure plan), the NMOCD district office will be notified by email or phone. The notification of closure will include the following: operators name, well name and API number (if applicable), and location (ULSTR).
19.15.17.13.F(1)	Reporting	Operator will send the NMOCD a closure report in accordance with 19.15.17.F(1) NMAC within 60 days of closure including the following items: Proof of closure notice, analytical results, backfill information, revegetation, and photo documentation of reclamation. Harvest understands that the NMOCD considers the closure date the day in which the BGT is backfilled and re-contoured. Revegetation is still required but, may be addressed in closure report.
19.15.17.13.G.4(a)	Timing	Within 60 days of cessation of operations, Harvest will remove liquids and sludge from a BGT prior to implementing a closure method and will dispose of the material in a NMOCD approved facility. Disposal facilities to be used by Harvest are listed below based on the listed waste types.
19.15.17.13.G.4(b)		Within 6 months of cessation of operations, Harvest will dispose, recycle, reuse, or reclaim the BGT in a NMOCD approved manner. If required, Harvest will provide documentation of the disposition of the BGT to the NMOCD. Liner materials will be cleaned to remove soils or contaminated material for disposal as solid waste. Disposal facilities to be used by Harvest are listed below based on the listed waste types.
19.15.17.13.H.1(a)	Reclamation	Harvest will reclaim the area by substantially restoring the impacted surface area to the condition that existed prior to oil and gas operations by placement of soil cover as described below for 19.15.17.13.H.2 NMAC. The location and associated areas will be recontoured that approximates the original contour and blends with the surrounding topography and revegetate as described below for 19.15.17.13.H.5 NMAC.
19.15.17.13.H.1(b)		Harvest will submit an alternative plan to be approved by the NMOCD and written approval from the surface owner before submitting the C-144 application.
19.15.17.13.H.1(c)		If a BGT is removed from an area where production operations will continue, the area will be reclaimed in such a way to minimize dust and erosion to the extent practicable.
19.15.17.13.H.2		Cover will include one foot of suitable material, with chloride concentrations less than 600 mg/kg as analyzed by EPA Method 300.0, to establish vegetation at the site, or the background thickness of topsoil, whichever is greater.
19.15.17.13.H.4		Harvest will construct the soil cover to the existing grade to prevent ponding of water and erosion of the cover material.

**Harvest Four Corners, LLC**  
**Closure Plan - Below Grade Tanks**

Pit Rule Citation (NMAC)	Rule Requirement	Operator Requirements
19.15.17.13.H.5(a) 19.15.17.13.H.5(b) 19.15.17.13.H.5(c) 19.15.17.13.H.5(d) 19.15.17.13.H.5(e)	Reclamation	For those portions of the former BGT area no longer in use with the exception where production operations will continue, the area will be reclaimed as nearly as practicable to their original condition or their final land use. Reclamation will begin as early as practical. The areas will be maintained to minimize dust and topsoils placed and contoured to limit erosion control, maintain stability, and preserve surface-water flow patterns. Harvest will seed the disturbed areas the first favorable growing season following closure of the BGT. Harvest will comply with obligations imposed by other applicable federal or tribal agencies in which their re-vegetation and reclamation requirements provide equal or better protection of fresh water, human health and the environment. Harvest will notify the NMOCD when reclamation and re-vegetation is complete.

Summary of Waste Materials and Disposal Facilities	
Waste Types	Disposal Facility
Steel Tank	San Juan County Landfill; Steel Recycling
Fiberglass Tank	San Juan County Landfill; Bondad Landfill; Re-use
Liner (cleaned – absent soil / sludge)	San Juan County Landfill; Bondad Landfill
Sludge	Envirotech; Industrial Ecosystems Inc.; T-N-T; Bondad Landfill
Liquids (Water / Hydrocarbons)	Basin Disposal; Key Energy; T-N-T
Contaminated Soil	Envirotech; Industrial Ecosystems Inc.; T-N-T; Bondad Landfill
Fencing / Miscellaneous	Re-use or Scrap

**Table I**  
**Closure Criteria for Soils Beneath Below Grade Tanks, Drying Pads Associated with Closed Loop Systems and Pits where contents are Removed**

Depth Below Bottom of pit to ground water less than 10,000 mg/l	Constituent	Method	Limit**
≤50 feet	Chloride	EPA 300.0	600 mg/kg
	TPH	EPA SW-846 Method 418.1	100 mg/kg
	BTEX	EPA SW-846 8021B or 8260B	50 mg/kg
	Benzene	EPA SW-846 8021B or 8260B	10 mg/kg
51 feet – 100 feet	Chloride	EPA 300.0	10,000 mg/kg
	TPH	EPA SW-846 Method 418.1	2,500 mg/kg
	GRO+DRO	EPA SW-846 Method 8015M	1,000 mg/kg
	BTEX	EPA SW-846 8021B or 8260B	50 mg/kg
	Benzene	EPA SW-846 8021B or 8260B	10 mg/kg
≤100 feet	Chloride	EPA 300.0	20,000 mg/kg
	TPH	EPA SW-846 Method 418.1	2,500 mg/kg
	GRO+DRO	EPA SW-846 Method 8015M	1,000 mg/kg
	BTEX	EPA SW-846 8021B or 8260B	50 mg/kg
	Benzene	EPA SW-846	10 mg/kg