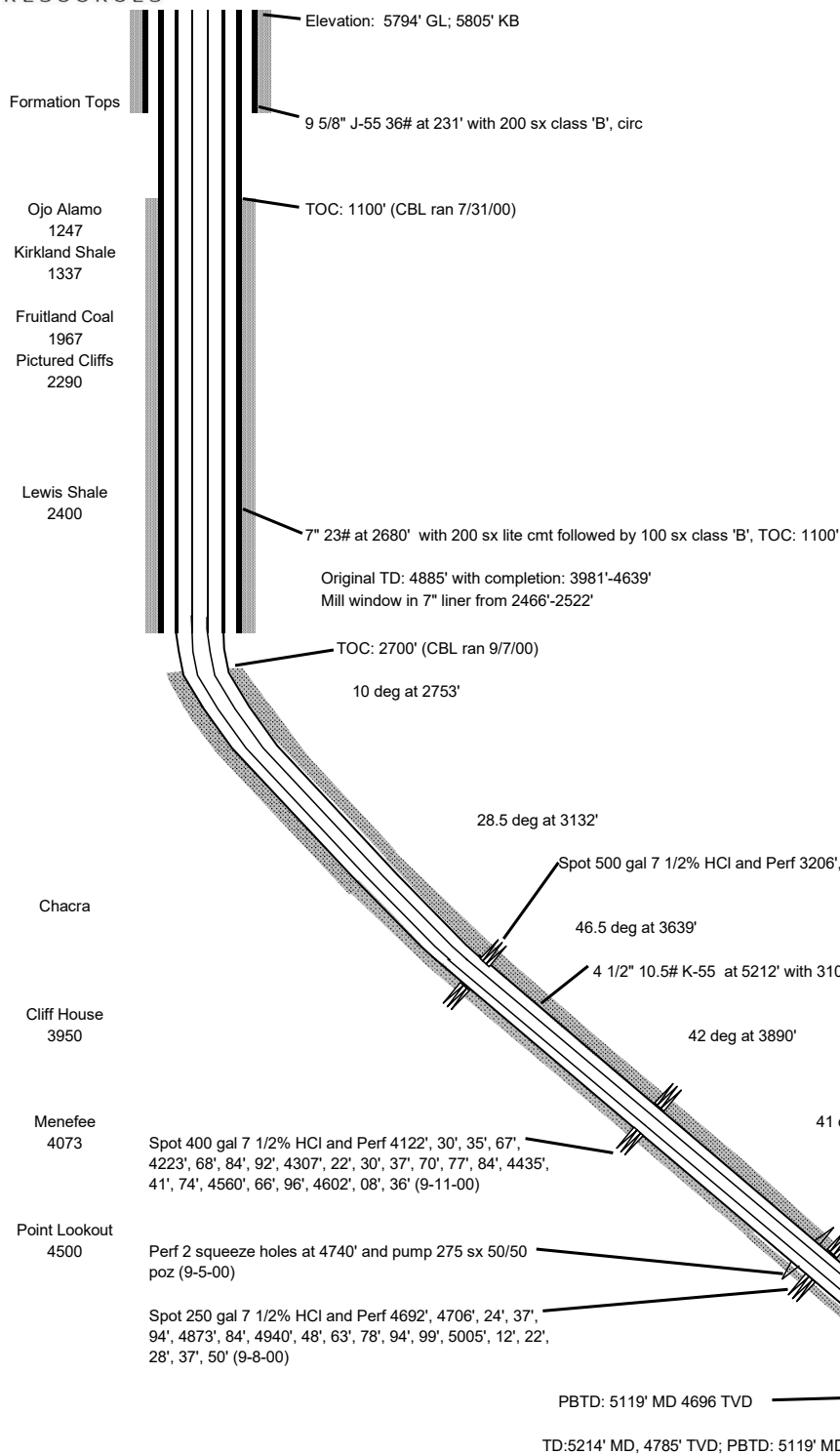




## Simmons "E" #2A



Location: Surface: 1700' FNL, 790' FWL, Sec 23, T29N, R9W, Bottom Hole: 950' FNL, 1875' FWL, Sec 23, T29N, R9W, San Juan County, New Mexico

Field: Blanco

Zone: Mesaverde and Otero Chacra

API #: 30-045-22802

Spud Date: January 25, 1978 0815 hours

Well was side tracked July 2000

Revised: 7/30/2007

OCD Received  
5/6/2020

9/8/2000	A
9/11/2000	F
9/12/2000	Frac 4122'-4636' with 110,000 gal 3% KCl and 101,600# 20/40 Brady sand @ 47 BPM
9/14/2000	Frac 3206'-3898' with 88,000 gal 3% KCl and 68,300# 20/40 Brady sand @ 57 BPM
1/31/2006	Acidize 4401'-4864' with BJ
2/1/2006	Frac 4401'-4864' with 972 gal N2 foam and 100,008# 20/40 Brady sand in 60Q N2 linear