

DISTRICT I
1825 N. French Dr., Hobbs, N.M. 88240

State of New Mexico
Energy, Minerals & Natural Resources Department

Form C-102
Revised July 16, 2010

DISTRICT II
1301 W. Grand Avenue, Artesia, N.M. 88210

Submit one copy to appropriate
District Office

DISTRICT III
1000 Rio Brazos Rd., Aztec, N.M. 87410

OIL CONSERVATION DIVISION
1220 South St. Francis Dr.
Santa Fe, NM 87505

DISTRICT IV
1220 S. St. Francis Dr., Santa Fe, NM 87506

☐ AMENDED REPORT

WELL LOCATION AND ACREAGE DEDICATION PLAT

¹ API Number	² Pool Code 71629	³ Pool Name BASIN FRUITLAND COAL
⁴ Property Code 35644	⁵ Property Name CARRACAS 14 B	⁶ Well Number 2
⁷ GRID No. 162928	⁸ Operator Name ENERGEN RESOURCES CORPORATION	⁹ Elevation 6536'

¹⁰ Surface Location

UL or lot no. G	Section 15	Township 32N	Range 4W	Lot Idn	Feet from the 1702'	North/South line NORTH	Feet from the 1865'	East/West line EAST	County RIO ARriba
--------------------	---------------	-----------------	-------------	---------	------------------------	---------------------------	------------------------	------------------------	----------------------

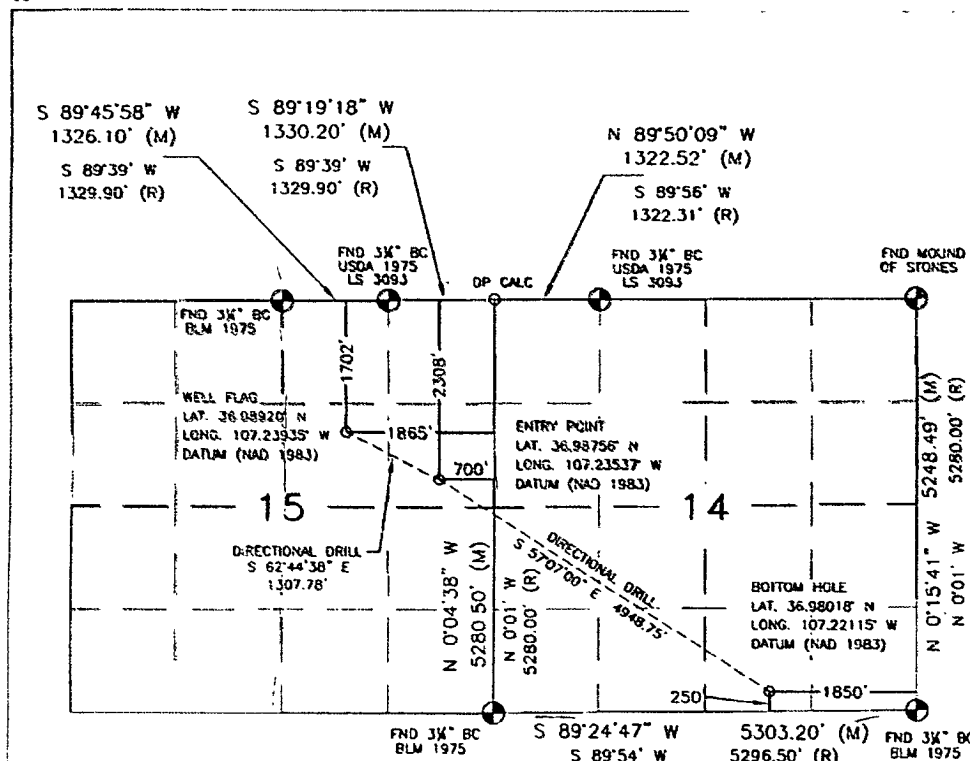
¹¹ Bottom Hole Location If Different From Surface

UL or lot no. O	Section 14	Township 32N	Range 4W	Lot Idn	Feet from the 250'	North/South line SOUTH	Feet from the 1850'	East/West line EAST	County RIO ARriba
--------------------	---------------	-----------------	-------------	---------	-----------------------	---------------------------	------------------------	------------------------	----------------------

¹² Dedicated Acres 4376.47 ac.	¹³ Joint or Infill	¹⁴ Consolidation Code	¹⁵ Order No.
--	-------------------------------	----------------------------------	-------------------------

NO ALLOWABLE WILL BE ASSIGNED TO THIS COMPLETION UNTIL ALL INTERESTS HAVE BEEN CONSOLIDATED
OR A NON-STANDARD UNIT HAS BEEN APPROVED BY THE DIVISION

16



17 OPERATOR CERTIFICATION

I hereby certify that the information contained herein is true and complete to the best of my knowledge and belief, and that this organization either owns a working interest or undivided mineral interest in the land including the proposed bottom hole location or has a right to drill this well at this location pursuant to a contract with an owner of such a mineral or working interest, or to a voluntary pooling agreement or a compulsory pooling order heretofore entered by the division.

Signature: *Andrew Soto* Date: 8-17-11

Printed Name: Andrew Soto

E-mail Address: asoto@energen.com

18 SURVEYOR CERTIFICATION

I hereby certify that the well location shown on this plat was plotted from field notes of actual surveys made by me or under my supervision, and that the same is true and correct to the best of my belief.

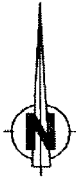
SEPTEMBER 24, 2010

Date of Survey: September 24, 2010

Signature: *David R. Russell*



DAVID RUSSELL
Certificate Number: 10201



CARRACAS SPECIAL PROJECTS AREA

CARRACAS 14 B #2

SURFACE LOCATION

1702' FNL & 1865' FEL, SW/NE SECTION 15

ENTRY POINT

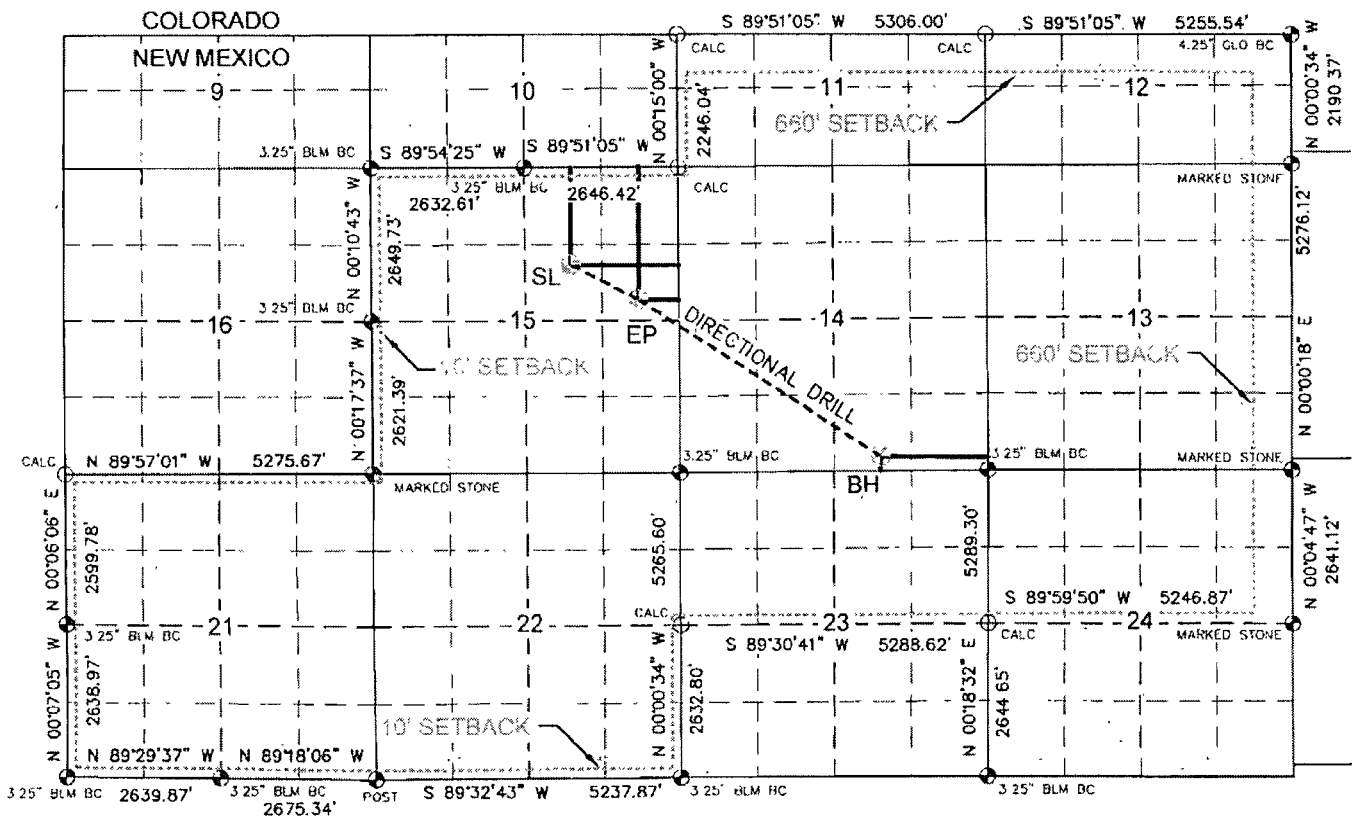
2308' FNL & 700' FEL, SE/NE SECTION 15

BOTTOM HOLE

250' FSL & 1850' FEL, SW/SE SECTION 14

T32N, R4W, N.M.P.M.,

RIO ARriba COUNTY, NEW MEXICO



NOT TO SCALE
JOB No.: ERG239
DATE: 08/17/11

RECEIVED
01 AUG 2011
11:01 AM
11:01 AM



Russell Surveying
1409 W. Aztec Blvd. #2
Aztec, New Mexico 87410
(505) 334-8637