

District I  
1625 N French Dr, Hobbs, NM 88240  
District II  
1301 W Grand Avenue, Artesia, NM 88210  
District III  
1000 Rio Brazos Road, Aztec, NM 87410  
District IV  
1220 S St Francis Dr, Santa Fe, NM 87505

State of New Mexico  
Energy Minerals and Natural Resources  
Department  
Oil Conservation Division  
1220 South St. Francis Dr.  
Santa Fe, NM 87505

Form C-144  
July 21, 2008

For temporary pits, closed-loop systems, and below-grade tanks, submit to the appropriate NMOCD District Office  
For permanent pits and exceptions submit to the Santa Fe Environmental Bureau office and provide a copy to the appropriate NMOCD District Office

**Pit, Closed-Loop System, Below-Grade Tank, or  
Proposed Alternative Method Permit or Closure Plan Application**

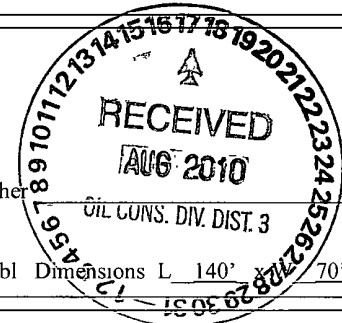
6853  
Type of action: ☐ Permit of a pit, closed-loop system, below-grade tank, or proposed alternative method  
☒ Closure of a pit, closed-loop system, below-grade tank, or proposed alternative method  
☐ Modification to an existing permit  
☐ Closure plan only submitted for an existing permitted or non-permitted pit, closed-loop system, below-grade tank, or proposed alternative method

**Instructions: Please submit one application (Form C-144) per individual pit, closed-loop system, below-grade tank or alternative request**

Please be advised that approval of this request does not relieve the operator of liability should operations result in pollution of surface water, ground water or the environment Nor does approval relieve the operator of its responsibility to comply with any other applicable governmental authority's rules, regulations or ordinances.

1  
Operator Williams Operating Co, LLC OGRID # 120782  
Address PO Box 640 / 721 S Main Aztec, NM 87410  
Facility or well name: Rosa Unit 137C  
API Number 30-039-30691 OCD Permit Number: \_\_\_\_\_  
U/L or Qtr/Qtr O Section 31 Township 31N Range 5W County Rio Arriba  
Center of Proposed Design. Latitude 36 85083 °N Longitude -107 40240°W NAD ☐ 1927 ☒ 1983  
Surface Owner ☒ Federal ☐ State ☐ Private ☐ Tribal Trust or Indian Allotment

2  
☒ **Pit:** Subsection F or G of 19 15 17 11 NMAC  
Temporary ☐ Drilling ☒ Workover  
☐ Permanent ☐ Emergency ☐ Cavitation ☐ P&A  
☒ Lined ☐ Unlined Liner type Thickness 20 mil ☒ LLDPE ☐ HDPE ☐ PVC ☐ Other \_\_\_\_\_  
☒ String-Reinforced  
Liner Seams ☒ Welded ☒ Factory ☐ Other \_\_\_\_\_ Volume 20,000 bbl Dimensions L 140' x W 70' x D 12'



3  
☐ **Closed-loop System:** Subsection H of 19 15 17 11 NMAC  
Type of Operation ☐ P&A ☐ Drilling a new well ☐ Workover or Drilling (Applies to activities which require prior approval of a permit or notice of intent)  
☐ Drying Pad ☐ Above Ground Steel Tanks ☐ Haul-off Bins ☐ Other \_\_\_\_\_  
☐ Lined ☐ Unlined Liner type Thickness \_\_\_\_\_ mil ☐ LLDPE ☐ HDPE ☐ PVC ☐ Other \_\_\_\_\_  
Liner Seams ☐ Welded ☐ Factory ☐ Other \_\_\_\_\_

4  
☐ **Below-grade tank:** Subsection I of 19 15 17 11 NMAC  
Volume \_\_\_\_\_ bbl Type of fluid \_\_\_\_\_  
Tank Construction material \_\_\_\_\_  
☐ Secondary containment with leak detection ☐ Visible sidewalls, liner, 6-inch lift and automatic overflow shut-off  
☐ Visible sidewalls and liner ☐ Visible sidewalls only ☐ Other \_\_\_\_\_  
Liner type Thickness \_\_\_\_\_ mil ☐ HDPE ☐ PVC ☐ Other \_\_\_\_\_

5  
☐ **Alternative Method:**  
Submittal of an exception request is required Exceptions must be submitted to the Santa Fe Environmental Bureau office for consideration of approval

6

**Fencing:** Subsection D of 19 15 17 11 NMAC (*Applies to permanent pits, temporary pits, and below-grade tanks*)

- ☐ Chain link, six feet in height, two strands of barbed wire at top (*Required if located within 1000 feet of a permanent residence, school, hospital, institution or church*)
- ☐ Four foot height, four strands of barbed wire evenly spaced between one and four feet
- ☒ Alternate Please specify As per BLM specifications

7

**Netting:** Subsection E of 19 15.17 11 NMAC (*Applies to permanent pits and permanent open top tanks*)

- ☒ Screen ☐ Netting ☐ Other \_\_\_\_\_
- ☐ Monthly inspections (If netting or screening is not physically feasible)

8

**Signs:** Subsection C of 19 15.17 11 NMAC

- ☐ 12"x 24", 2" lettering, providing Operator's name, site location, and emergency telephone numbers
- ☒ Signed in compliance with 19 15 3 103 NMAC

9

**Administrative Approvals and Exceptions:**

Justifications and/or demonstrations of equivalency are required Please refer to 19 15 17 NMAC for guidance

**Please check a box if one or more of the following is requested, if not leave blank:**

- ☐ Administrative approval(s) Requests must be submitted to the appropriate division district or the Santa Fe Environmental Bureau office for consideration of approval
- ☐ Exception(s) Requests must be submitted to the Santa Fe Environmental Bureau office for consideration of approval

10

**Siting Criteria (regarding permitting):** 19 15 17 10 NMAC

**Instructions:** The applicant must demonstrate compliance for each siting criteria below in the application. Recommendations of acceptable source material are provided below. Requests regarding changes to certain siting criteria may require administrative approval from the appropriate district office or may be considered an exception which must be submitted to the Santa Fe Environmental Bureau office for consideration of approval. Applicant must attach justification for request. Please refer to 19.15.17.10 NMAC for guidance. Siting criteria does not apply to drying pads or above-grade tanks associated with a closed-loop system.

Ground water is less than 50 feet below the bottom of the temporary pit, permanent pit, or below-grade tank - NM Office of the State Engineer - iWATERS database search, USGS, Data obtained from nearby wells	<input type="checkbox"/> Yes <input checked="" type="checkbox"/> No
Within 300 feet of a continuously flowing watercourse, or 200 feet of any other significant watercourse or lakebed, sinkhole, or playa lake (measured from the ordinary high-water mark) - Topographic map, Visual inspection (certification) of the proposed site	<input type="checkbox"/> Yes <input checked="" type="checkbox"/> No
Within 300 feet from a permanent residence, school, hospital, institution, or church in existence at the time of initial application. (Applies to temporary, emergency, or cavitation pits and below-grade tanks) - Visual inspection (certification) of the proposed site, Aerial photo; Satellite image	<input type="checkbox"/> Yes <input checked="" type="checkbox"/> No <input type="checkbox"/> NA
Within 1000 feet from a permanent residence, school, hospital, institution, or church in existence at the time of initial application (Applies to permanent pits) - Visual inspection (certification) of the proposed site, Aerial photo, Satellite image	<input type="checkbox"/> Yes <input type="checkbox"/> No <input checked="" type="checkbox"/> NA
Within 500 horizontal feet of a private, domestic fresh water well or spring that less than five households use for domestic or stock watering purposes, or within 1000 horizontal feet of any other fresh water well or spring, in existence at the time of initial application - NM Office of the State Engineer - iWATERS database search, Visual inspection (certification) of the proposed site	<input type="checkbox"/> Yes <input checked="" type="checkbox"/> No
Within incorporated municipal boundaries or within a defined municipal fresh water well field covered under a municipal ordinance adopted pursuant to NMSA 1978, Section 3-27-3, as amended - Written confirmation or verification from the municipality, Written approval obtained from the municipality	<input type="checkbox"/> Yes <input checked="" type="checkbox"/> No
Within 500 feet of a wetland - US Fish and Wildlife Wetland Identification map, Topographic map, Visual inspection (certification) of the proposed site	<input type="checkbox"/> Yes <input checked="" type="checkbox"/> No
Within the area overlying a subsurface mine - Written confirmation or verification or map from the NM EMNRD-Mining and Mineral Division	<input type="checkbox"/> Yes <input checked="" type="checkbox"/> No
Within an unstable area - Engineering measures incorporated into the design, NM Bureau of Geology & Mineral Resources, USGS, NM Geological Society, Topographic map	<input type="checkbox"/> Yes <input checked="" type="checkbox"/> No
Within a 100-year floodplain - FEMA map	<input type="checkbox"/> Yes <input checked="" type="checkbox"/> No

11

**Temporary Pits, Emergency Pits, and Below-grade Tanks Permit Application Attachment Checklist:** Subsection B of 19 15 17 9 NMAC

**Instructions:** Each of the following items must be attached to the application. Please indicate, by a check mark in the box, that the documents are attached.

- ☐ Hydrogeologic Report (Below-grade Tanks) - based upon the requirements of Paragraph (4) of Subsection B of 19.15 17 9 NMAC
- ☐ Hydrogeologic Data (Temporary and Emergency Pits) - based upon the requirements of Paragraph (2) of Subsection B of 19 15 17 9 NMAC
- ☐ Siting Criteria Compliance Demonstrations - based upon the appropriate requirements of 19 15 17 10 NMAC
- ☐ Design Plan - based upon the appropriate requirements of 19 15 17 11 NMAC
- ☐ Operating and Maintenance Plan - based upon the appropriate requirements of 19 15 17 12 NMAC
- ☐ Closure Plan (Please complete Boxes 14 through 18, if applicable) - based upon the appropriate requirements of Subsection C of 19 15 17 9 NMAC and 19 15 17 13 NMAC

☐ Previously Approved Design (attach copy of design) API Number \_\_\_\_\_ or Permit Number \_\_\_\_\_

12

**Closed-loop Systems Permit Application Attachment Checklist:** Subsection B of 19 15 17 9 NMAC

**Instructions:** Each of the following items must be attached to the application. Please indicate, by a check mark in the box, that the documents are attached.

- ☐ Geologic and Hydrogeologic Data (only for on-site closure) - based upon the requirements of Paragraph (3) of Subsection B of 19 15 17 9
- ☐ Siting Criteria Compliance Demonstrations (only for on-site closure) - based upon the appropriate requirements of 19 15 17 10 NMAC
- ☐ Design Plan - based upon the appropriate requirements of 19 15.17.11 NMAC
- ☐ Operating and Maintenance Plan - based upon the appropriate requirements of 19.15 17.12 NMAC
- ☐ Closure Plan (Please complete Boxes 14 through 18, if applicable) - based upon the appropriate requirements of Subsection C of 19 15 17.9 NMAC and 19.15 17 13 NMAC

☐ Previously Approved Design (attach copy of design) API Number \_\_\_\_\_

☐ Previously Approved Operating and Maintenance Plan API Number \_\_\_\_\_ (Applies only to closed-loop system that use above ground steel tanks or haul-off bins and propose to implement waste removal for closure)

13

**Permanent Pits Permit Application Checklist:** Subsection B of 19 15 17 9 NMAC

**Instructions:** Each of the following items must be attached to the application. Please indicate, by a check mark in the box, that the documents are attached.

- ☐ Hydrogeologic Report - based upon the requirements of Paragraph (1) of Subsection B of 19 15 17 9 NMAC
- ☐ Siting Criteria Compliance Demonstrations - based upon the appropriate requirements of 19 15 17.10 NMAC
- ☐ Climatological Factors Assessment
- ☐ Certified Engineering Design Plans - based upon the appropriate requirements of 19 15 17 11 NMAC
- ☐ Dike Protection and Structural Integrity Design - based upon the appropriate requirements of 19 15 17 11 NMAC
- ☐ Leak Detection Design - based upon the appropriate requirements of 19 15 17 11 NMAC
- ☐ Liner Specifications and Compatibility Assessment - based upon the appropriate requirements of 19 15 17 11 NMAC
- ☐ Quality Control/Quality Assurance Construction and Installation Plan
- ☐ Operating and Maintenance Plan - based upon the appropriate requirements of 19 15 17 12 NMAC
- ☐ Freeboard and Overtopping Prevention Plan - based upon the appropriate requirements of 19 15 17 11 NMAC
- ☐ Nuisance or Hazardous Odors, including H<sub>2</sub>S, Prevention Plan
- ☐ Emergency Response Plan
- ☐ Oil Field Waste Stream Characterization
- ☐ Monitoring and Inspection Plan
- ☐ Erosion Control Plan
- ☐ Closure Plan - based upon the appropriate requirements of Subsection C of 19.15 17 9 NMAC and 19 15 17 13 NMAC

14

**Proposed Closure:** 19 15 17 13 NMAC

**Instructions:** Please complete the applicable boxes, Boxes 14 through 18, in regards to the proposed closure plan.

Type ☒ Drilling ☐ Workover ☐ Emergency ☐ Cavitation ☐ P&A ☐ Permanent Pit ☐ Below-grade Tank ☐ Closed-loop System

☐ Alternative

Proposed Closure Method ☐ Waste Excavation and Removal

☐ Waste Removal (Closed-loop systems only)

☒ On-site Closure Method (Only for temporary pits and closed-loop systems)

☐ In-place Burial ☐ On-site Trench Burial

☐ Alternative Closure Method (Exceptions must be submitted to the Santa Fe Environmental Bureau for consideration)

15

**Waste Excavation and Removal Closure Plan Checklist:** (19 15 17 13 NMAC) **Instructions:** Each of the following items must be attached to the closure plan. Please indicate, by a check mark in the box, that the documents are attached.

- ☐ Protocols and Procedures - based upon the appropriate requirements of 19 15 17 13 NMAC
- ☐ Confirmation Sampling Plan (if applicable) - based upon the appropriate requirements of Subsection F of 19 15 17 13 NMAC
- ☐ Disposal Facility Name and Permit Number (for liquids, drilling fluids and drill cuttings)
- ☐ Soil Backfill and Cover Design Specifications - based upon the appropriate requirements of Subsection H of 19 15 17 13 NMAC
- ☐ Re-vegetation Plan - based upon the appropriate requirements of Subsection I of 19 15 17 13 NMAC
- ☐ Site Reclamation Plan - based upon the appropriate requirements of Subsection G of 19 15 17 13 NMAC

**Waste Removal Closure For Closed-loop Systems That Utilize Above Ground Steel Tanks or Haul-off Bins Only:** (19.15 17 13 D NMAC)

**Instructions:** Please identify the facility or facilities for the disposal of liquids, drilling fluids and drill cuttings. Use attachment if more than two facilities are required.

Disposal Facility Name \_\_\_\_\_ Disposal Facility Permit Number \_\_\_\_\_

Disposal Facility Name \_\_\_\_\_ Disposal Facility Permit Number \_\_\_\_\_

Will any of the proposed closed-loop system operations and associated activities occur on or in areas that *will not* be used for future service and operations?

☐ Yes (If yes, please provide the information below) ☐ No

*Required for impacted areas which will not be used for future service and operations*

☐ Soil Backfill and Cover Design Specifications - based upon the appropriate requirements of Subsection H of 19 15 17 13 NMAC

☐ Re-vegetation Plan - based upon the appropriate requirements of Subsection I of 19 15 17 13 NMAC

☐ Site Reclamation Plan - based upon the appropriate requirements of Subsection G of 19 15 17 13 NMAC

**Siting Criteria (regarding on-site closure methods only):** 19 15 17.10 NMAC

**Instructions:** Each siting criteria requires a demonstration of compliance in the closure plan. Recommendations of acceptable source material are provided below. Requests regarding changes to certain siting criteria may require administrative approval from the appropriate district office or may be considered an exception which must be submitted to the Santa Fe Environmental Bureau office for consideration of approval. Justifications and/or demonstrations of equivalency are required. Please refer to 19.15.17.10 NMAC for guidance.

Ground water is less than 50 feet below the bottom of the buried waste.

- NM Office of the State Engineer - iWATERS database search, USGS, Data obtained from nearby wells

☐ Yes ☒ No

☐ NA

Ground water is between 50 and 100 feet below the bottom of the buried waste

- NM Office of the State Engineer - iWATERS database search, USGS, Data obtained from nearby wells

☐ Yes ☒ No

☐ NA

Ground water is more than 100 feet below the bottom of the buried waste

- NM Office of the State Engineer - iWATERS database search, USGS, Data obtained from nearby wells

☒ Yes ☐ No

☐ NA

Within 300 feet of a continuously flowing watercourse, or 200 feet of any other significant watercourse or lakebed, sinkhole, or playa lake (measured from the ordinary high-water mark)

- Topographic map; Visual inspection (certification) of the proposed site

☐ Yes ☒ No

Within 300 feet from a permanent residence, school, hospital, institution, or church in existence at the time of initial application.

- Visual inspection (certification) of the proposed site; Aerial photo, Satellite image

☐ Yes ☒ No

Within 500 horizontal feet of a private, domestic fresh water well or spring that less than five households use for domestic or stock watering purposes, or within 1000 horizontal feet of any other fresh water well or spring, in existence at the time of initial application

- NM Office of the State Engineer - iWATERS database; Visual inspection (certification) of the proposed site

☐ Yes ☒ No

Within incorporated municipal boundaries or within a defined municipal fresh water well field covered under a municipal ordinance adopted pursuant to NMSA 1978, Section 3-27-3, as amended

- Written confirmation or verification from the municipality, Written approval obtained from the municipality

☐ Yes ☒ No

Within 500 feet of a wetland

- US Fish and Wildlife Wetland Identification map, Topographic map; Visual inspection (certification) of the proposed site

☐ Yes ☒ No

Within the area overlying a subsurface mine

- Written confirmation or verification or map from the NM EMNRD-Mining and Mineral Division

☐ Yes ☒ No

Within an unstable area

- Engineering measures incorporated into the design, NM Bureau of Geology & Mineral Resources, USGS, NM Geological Society, Topographic map

☐ Yes ☒ No

Within a 100-year floodplain

- FEMA map

☐ Yes ☒ No

**On-Site Closure Plan Checklist:** (19 15 17.13 NMAC) **Instructions:** Each of the following items must be attached to the closure plan. Please indicate, by a check mark in the box, that the documents are attached.

☒ Siting Criteria Compliance Demonstrations - based upon the appropriate requirements of 19 15 17 10 NMAC

☒ Proof of Surface Owner Notice - based upon the appropriate requirements of Subsection F of 19 15 17 13 NMAC

☐ Construction/Design Plan of Burial Trench (if applicable) based upon the appropriate requirements of 19 15 17 11 NMAC

☒ Construction/Design Plan of Temporary Pit (for in-place burial of a drying pad) - based upon the appropriate requirements of 19 15 17 11 NMAC

☒ Protocols and Procedures - based upon the appropriate requirements of 19 15 17 13 NMAC

☒ Confirmation Sampling Plan (if applicable) - based upon the appropriate requirements of Subsection F of 19 15 17.13 NMAC

☒ Waste Material Sampling Plan - based upon the appropriate requirements of Subsection F of 19 15 17 13 NMAC

☒ Disposal Facility Name and Permit Number (for liquids, drilling fluids and drill cuttings or in case on-site closure standards cannot be achieved)

☒ Soil Cover Design - based upon the appropriate requirements of Subsection H of 19 15 17 13 NMAC

☒ Re-vegetation Plan - based upon the appropriate requirements of Subsection I of 19 15 17 13 NMAC

☒ Site Reclamation Plan - based upon the appropriate requirements of Subsection G of 19 15 17 13 NMAC

19

**Operator Application Certification:**

I hereby certify that the information submitted with this application is true, accurate and complete to the best of my knowledge and belief

Name (Print) \_\_\_\_\_ Title \_\_\_\_\_

Signature \_\_\_\_\_ Date \_\_\_\_\_

e-mail address \_\_\_\_\_ Telephone \_\_\_\_\_

20

**OCD Approval:** ☐ Permit Application (including closure plan) ☒ Closure Plan (only) ☐ OCD Conditions (see attachment)

OCD Representative Signature: Jonathan D. Kelly Approval Date: 9/6/2011

Title: Compliance Officer OCD Permit Number: \_\_\_\_\_

21

**Closure Report (required within 60 days of closure completion):** Subsection K of 19.15 17 13 NMAC

*Instructions: Operators are required to obtain an approved closure plan prior to implementing any closure activities and submitting the closure report. The closure report is required to be submitted to the division within 60 days of the completion of the closure activities. Please do not complete this section of the form until an approved closure plan has been obtained and the closure activities have been completed.*

☒ Closure Completion Date: 06/01/2010

22

**Closure Method:**

☐ Waste Excavation and Removal ☒ On-Site Closure Method ☐ Alternative Closure Method ☐ Waste Removal (Closed-loop systems only)  
☐ If different from approved plan, please explain

23

**Closure Report Regarding Waste Removal Closure For Closed-loop Systems That Utilize Above Ground Steel Tanks or Haul-off Bins Only:**

*Instructions: Please identify the facility or facilities for where the liquids, drilling fluids and drill cuttings were disposed. Use attachment if more than two facilities were utilized.*

Disposal Facility Name \_\_\_\_\_ Disposal Facility Permit Number \_\_\_\_\_

Disposal Facility Name \_\_\_\_\_ Disposal Facility Permit Number \_\_\_\_\_

Were the closed-loop system operations and associated activities performed on or in areas that *will not* be used for future service and operations?

☐ Yes (If yes, please demonstrate compliance to the items below) ☐ No

*Required for impacted areas which will not be used for future service and operations*

- ☐ Site Reclamation (Photo Documentation)  
☐ Soil Backfilling and Cover Installation  
☐ Re-vegetation Application Rates and Seeding Technique

24

**Closure Report Attachment Checklist:** *Instructions: Each of the following items must be attached to the closure report. Please indicate, by a check mark in the box, that the documents are attached.*

- ☒ Proof of Closure Notice (surface owner and division)  
☒ Proof of Deed Notice (required for on-site closure)  
☒ Plot Plan (for on-site closures and temporary pits)  
☒ Confirmation Sampling Analytical Results (if applicable)  
☐ Waste Material Sampling Analytical Results (required for on-site closure)  
☒ Disposal Facility Name and Permit Number  
☒ Soil Backfilling and Cover Installation  
☒ Re-vegetation Application Rates and Seeding Technique  
☒ Site Reclamation (Photo Documentation)

On-site Closure Location Latitude 36 85083N Longitude -107 40240W NAD ☐ 1927 ☒ 1983

25

**Operator Closure Certification:**

I hereby certify that the information and attachments submitted with this closure report is true, accurate and complete to the best of my knowledge and belief. I also certify that the closure complies with all applicable closure requirements and conditions specified in the approved closure plan

Name (Print) Tasha Meador Title EH&S Specialist

Signature Tasha Meador Date 8/16/10

e-mail address tasha meador@williams.com Telephone 505-634-4241

**Williams Production Co., LLC**  
**San Juan Basin: New Mexico Assets**  
Temporary Pit In-place Closure Report  
Drilling/Completion and Workover  
(Groundwater >100 feet bgs)

**Well:** Rosa unit # 137C  
**API No:** 30-03930691  
**Location:** O-Sec31-T31N-R-05W

In accordance with Rule 19.15.17.13 NMAC, the following plan describes the general in-place closure requirements of temporary pits on Williams Production Co, LLC (WPX) locations in the San Juan Basin of New Mexico. This is WPX's standard procedure for all temporary pits to be utilized for the drilling, completion and/or workovers of oil and gas wells operated by WPX. For those temporary pits which do not conform to this standard closure plan, a separate well/pit specific closure plan will be developed and utilized.

All closure activities will include proper documentation and will be submitted to OCD within 60 days of the pit closure on a Closure Report using Division Form C-144. The Report will include the following:

- Details on Capping and Covering, where applicable
- Plot Plan (Pit Diagram)
- Inspection reports
- Sampling Results
- Division Form C-105: WELL COMPLETION OR RECOMPLETION REPORT AND LOG
- Copy of Deed Notice filed with the County Clerk (format to meet County requirements)  
A deed notice is not required on state, federal or tribal land according to NMOCD FAQ dated October 30, 2008 and posted on the NMOCD website.

General Plan Requirements:

1. All free standing liquids will be removed from the pit at the start of the closure process. Liquids will be removed in a manner that the appropriate District Office approves including; recycled, reused, reclaimed, evaporated, and/or disposed of in a Division-approved facility. Once all free liquids are removed, the sludge will be stabilized by one of the following methods depending on equipment availability: blending with clean stockpiled soils or dewatering using a Bowl Decanter Centrifuge then blending with clean stockpiles soils.

To the extent practical, free liquids were pulled from the reserve pit following the completion rig off. Haul date was July 09, 2010 to (Rosa Unit SWD #001 (Order: SWD-916, API: 3003927055)

2. The preferred method of closure for all temporary pits will be on-site closure by in-place burial, provided all the criteria in 19.15.17.13.B are met.

On-site burial plan for this location was approved by the Aztec District Office on 4/23/2009.

3. The surface owner shall be notified of WPX's proposed closure plan using a means that provides proof of notice (i.e. certified mail/return receipt requested)  
Williams notified the SMA of its intent to use a temporary pit and onsite burial in the Surface Use Plan in the well APD. The SMA was notified by email see attached. No return receipt required per BLM:FFO/NMOCD MOU dated 5/4/09.

4. Within six months of the "rig-off" status occurring WPX will ensure that the temporary pit is covered, recontoured and reseeding in progress.  
Drill rig-off 5/28/2009. Request for transfer to completion rig submitted 06/19/2009 to OCD Aztec District Office, Completion rig-off 5/28/2009. Pit covered 06/14/2010. Returned in Spring of 2010 to continue reclamation of area due to winter closure. Pit area along with unused portions of well pad to be interim reclaimed in accordance with Surface Management Agency requirements in APD-COAs and per BLM:FFO/NMOCD MOU dated 5/4/09.

5. Notice of Closure will be given to the Aztec District office between 72 hours and one week of the scheduled closure via email or phone. The notification of closure will include the following:
  - a. Operators Name (WPX)
  - b. Well Name and API Number
  - c. Location (USTR)

The Aztec District Office of NMOCD was notified by email using a format acceptable to the District. Copies of the notification from Abode Contractors on 05/27/2010 is attached.

6. The pit liner shall be removed above "mud level" after stabilization. Removal of the liner will consist of manually or mechanically cutting the liner at the mud level and removing all remaining liner. Care will be taken to remove "all" of the liner (i.e. anchored material). All excessive liner will be disposed of at a licensed disposal facility (probably San Juan Regional Landfill operated by Waste Management under NMED Permit SWM-052426).

The liner to the temporary pit was removed above the "mud level" once stabilized. Removal of the liner consisted of manually cutting the liner and removing all remaining liner material above the "mud level" including the anchor material. All excessive liner was disposed of at the San Juan Regional Landfill operated by Waste Management under NMED Permit SWM-052426.

7. Solidification of the remaining pit contents shall be achieved by mixing non-waste containing, earthen material. The solidification process will be accomplished use a combination of natural drying and mechanical mixing. Pit contents will be mixed with non-waste, earthen material to a consistency that is deemed safe and stable. The mixing ratio shall not exceed 3 parts non-waste to 1 part pit contents.

Following removal of free liquids, the pit contents were mixed with non-waste containing, earthen material in order to achieve appropriate solidification and a consistency that was deemed safe and stable. The solidification process was accomplished using a combination of natural drying, a Bowl Decanter Centrifuge, and mechanically mixing using a dozer and trackhoe. The mixing ration was approximately 2.5-3 parts native soil to 1 part pit contents. Solidification was completed 6/11/2010

8. A five-point composite sample will be taken of the pit using sampling tools and all samples tested per 19.15.17.13(B)(1)(b) NMAC. In the event that the criteria are not met (See Table 1), all contents will be handled per 19.15.17.13(B)(1)(a) (i.e. dig and haul to a Division-approved facility). Approval to haul will be requested of the Aztec District office prior to initiation.

A five-point composite sampling was taken of the pit area using sampling tools and the sample was tested per 19.15.17.13(B)(1)(b) NMAC. Results are shown in Table 1 and lab reports are attached.

Table 1: Closure Criteria for Temporary Pits in Non-sensitive Areas with Groundwater >100 bgs.

Components	Testing Methods	Limits (mg/Kg)	Pit (mg/Kg)
Benzene	EPA SW-846 Method 8021B or 8260B	0.2	ND
BTEX	EPA SW-846 Method 8021B or 8260B	50	20.2
TPH	EPA SW-846 Method 418.1	2500	22.0
GRO/DRO	EPA SW-846 Method 8015M (GRO/DRO)	500	ND
Chlorides	EPA SW-846 Method 300.1	500	5

9. Upon completion of solidification and testing, the pit area will be backfilled with non-waste earthen material compacted to native conditions to enable effective revegetation for successful evapotranspiration. A minimum of four feet of cover including replacement of one foot of suitable material to establish vegetation, or the background thickness of topsoil, whichever is greater.

Upon completion of solidification and testing, the pit area was backfilled with non-waste earthen material compacted to native conditions. A minimum of four feet of cover to the extent practical was achieved and the cover included just over a foot of topsoil suitable to establish vegetation.

10. Following cover, the site will be recontoured to meet the Surface Management Agency or surface owner requirements. Re-contouring will attempt to match fit, shape, line form, and texture of the surrounding geography. Re-shaping will include drainage control, prevent ponding, and minimize erosion. Natural drainages will be unimpeded and stormwater Best Management Practices (BMPs) will be used to aid in soil stabilization and protection surface water quality.

Following cover, Williams reestablished drainage and contours to approximately match previous topography meeting the Conditions of Approval in the APD and the direction offered by a BLM/USFS inspector. Cover and re-contouring were completed 06/14/2010

11. Notification will be sent to the Aztec District office when the reclaimed area is seeded. Williams will comply with Surface Management Agency reseeding requirements in the COAs of the APD for the referenced well, per BLM:FFO/NMOCD MOU dated 5/4/09.

12. WPX shall seed the disturbed areas the first growing season after the pit is covered. Seeding will be accomplished via drilling on the contour whenever practical, or by other Division-

approved methods. Vegetative cover will equal 70% of the native perennial vegetative cover (un-impacted) consisting of at least three native plant species, including at least one grass, but not including noxious weeds, and maintained that cover through two successive growing seasons. Repeat seeding or planting will be continued until successful vegetative growth occurs. *Note: WPX assumes the seeding stipulations including mix and seeding methods specified by the Surface Management Agency (BLM, BOR, USFS, Tribal, etc.) or Land owner as part of a surface use agreement or APD are Division-approved methods unless notified by the Division of their unacceptability.*

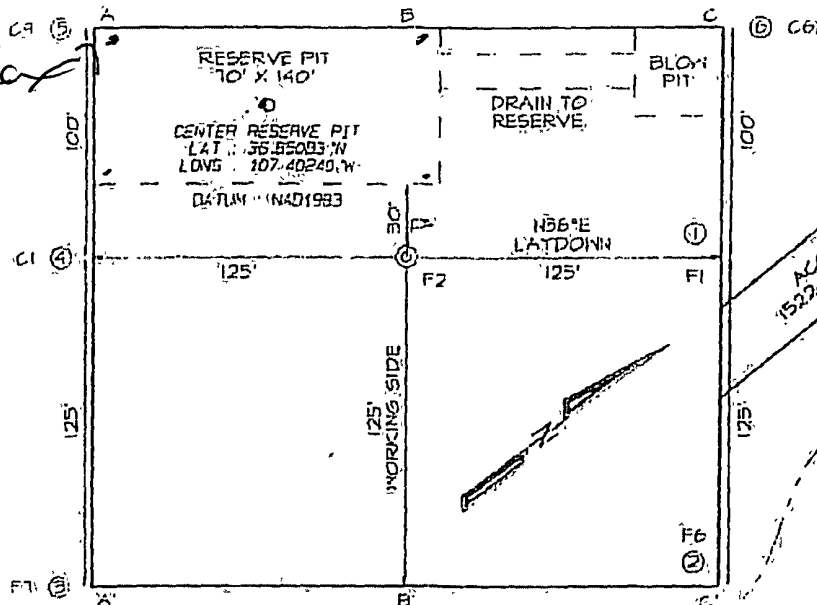
Williams will comply with Surface Management Agency reseeding requirements in the COAs of the APD for the referenced well, per BLM:FFO/NMOCD MOU dated 5/4/09.

13. The temporary pit will be located with a steel marker, no less than four inches in diameter, cemented in a hole three feet deep in the center of the on site burial upon the abandonment of all wells on the pad. The marker will be flush with the ground to allow access of the active well pad and for safety concerns. The marker will include a threaded collar to be used for future abandonment. The top of the marker will contain a welded steel 12" square plate that indicates the on site burial of the temporary pit. The plate will be easily removable and a four-foot tall riser will be threaded into the top of the collar marker and welded around the base with the operations information at the time of all wells on the pad abandoned. The information will include Operator Name, Lease Name, Well Name, and number, USTR, and an indicator that the marker is an onsite pit burial location.

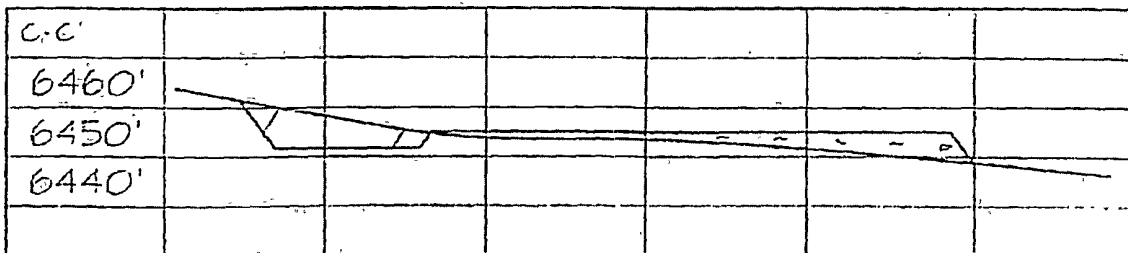
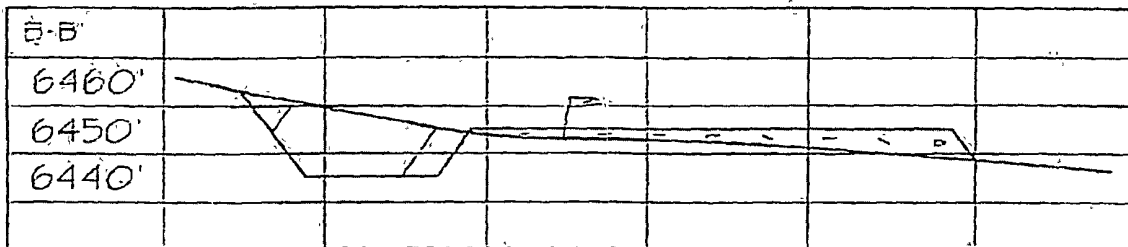
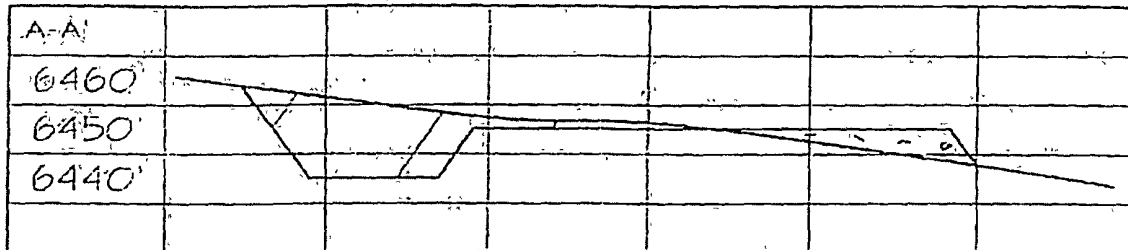
The temporary pit was located with a steel marker meeting the above listed specifications. The marker has the following information welded for future reference: Williams Production, NMSF-078768, S031-T31N-R05W-F, "Pit Burial" (photo attached). Steel marker set 6/23/2010.

Sample Area

LATITUDE: 36.85085° N  
LONGITUDE: 107.40217° W  
DATUM: NAD1983



ଶ୍ରୀମତୀ ଟି. ପ୍ରଦ୍ୟୁମ୍ନା ଦେବୀଙ୍କ କବଳରେ ରହିଥିବା ସହର ଲୋକଙ୍କୁ ଏହି ବିଷୟରେ ଜଣାଇବାକୁ ଏହି ପତ୍ରଟି ଆପଣଙ୍କ ମଧ୍ୟସ୍ଥ ହେଉଛି ।





**EPA METHOD 8015 Modified  
Nonhalogenated Volatile Organics  
Total Petroleum Hydrocarbons**

Client: WPX  
Sample ID: Reserve Pit  
Laboratory Number: 54975  
Chain of Custody No: 9835  
Sample Matrix: Soil  
Preservative: Cool  
Condition: Intact

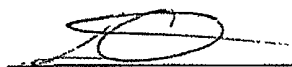
Project #: 04108-0136  
Date Reported: 07-06-10  
Date Sampled: 06-23-10  
Date Received: 07-01-10  
Date Extracted: 07-01-10  
Date Analyzed: 07-02-10  
Analysis Requested: 8015 TPH

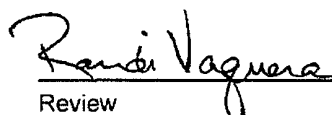
Parameter	Concentration (mg/Kg)	Det. Limit (mg/Kg)
Gasoline Range (C5 - C10)	ND	0.2
Diesel Range (C10 - C28)	ND	0.1
Total Petroleum Hydrocarbons	ND	0.2

ND - Parameter not detected at the stated detection limit.

References: Method 8015B, Nonhalogenated Volatile Organics, Test Methods for Evaluating Solid Waste, SW-846, USEPA, December 1996.

Comments: Rosa Unit #137 C

  
\_\_\_\_\_  
Analyst

  
\_\_\_\_\_  
Review



**EPA Method 8015 Modified**  
**Nonhalogenated Volatile Organics**  
**Total Petroleum Hydrocarbons**

**Quality Assurance Report**

Client:	QA/QC	Project #:	N/A
Sample ID:	07-02-10 QA/QC	Date Reported:	07-06-10
Laboratory Number:	54974	Date Sampled:	N/A
Sample Matrix:	Methylene Chloride	Date Received:	N/A
Preservative:	N/A	Date Analyzed:	07-02-10
Condition:	N/A	Analysis Requested:	TPH

	I-Cal Date	I-Cal RF:	C-Cal RF:	% Difference	Accept. Range
Gasoline Range C5 - C10	05-07-07	9.9960E+002	1.0000E+003	0.04%	0 - 15%
Diesel Range C10 - C28	05-07-07	9.9960E+002	1.0000E+003	0.04%	0 - 15%

Blank Conc. (mg/L - mg/Kg)	Concentration	Detection Limit
Gasoline Range C5 - C10	ND	0.2
Diesel Range C10 - C28	ND	0.1
Total Petroleum Hydrocarbons	ND	0.2


Duplicate Conc. (mg/Kg)	Sample	Duplicate	% Difference	Accept. Range
Gasoline Range C5 - C10	ND	ND	0.0%	0 - 30%
Diesel Range C10 - C28	ND	ND	0.0%	0 - 30%


Spike Conc. (mg/Kg)	Sample	Spike Added	Spike Result	% Recovery	Accept. Range
Gasoline Range C5 - C10	ND	250	242	96.8%	75 - 125%
Diesel Range C10 - C28	ND	250	261	104%	75 - 125%

ND - Parameter not detected at the stated detection limit.

References. Method 8015B, Nonhalogenated Volatile Organics, Test Methods for Evaluating Solid Waste, SW-846, USEPA, December 1996.

Comments: QA/QC for Samples 54974-54975; 54977-54980; 54928-54931

  
Analyst

  
Review



EPA METHOD 8021  
AROMATIC VOLATILE ORGANICS

Client:	WPX	Project #:	04108-0136
Sample ID:	Reserve Pit	Date Reported:	07-05-10
Laboratory Number:	54975	Date Sampled:	06-23-10
Chain of Custody:	9835	Date Received:	07-01-10
Sample Matrix:	Soil	Date Analyzed:	07-02-10
Preservative:	Cool	Date Extracted:	07-01-10
Condition:	Intact	Analysis Requested:	BTEX

Parameter	Concentration (ug/Kg)	Det. Limit (ug/Kg)
Benzene	ND	0.9
Toluene	2.0	1.0
Ethylbenzene	1.1	1.0
p,m-Xylene	4.5	1.2
o-Xylene	4.5	0.9
Total BTEX	12.1	

ND - Parameter not detected at the stated detection limit.

Surrogate Recoveries:	Parameter	Percent Recovery
	Fluorobenzene	100 %
	1,4-difluorobenzene	100 %
	Bromochlorobenzene	100 %

References: Method 5030B, Purge-and-Trap, Test Methods for Evaluating Solid Waste, SW-846, USEPA, December 1996.

Method 8021B, Aromatic Volatile Organics, Test Methods for Evaluating Solid Waste, SW-846, USEPA, December 1996.

Comments: Rosa Unit #137C

  
Analyst

  
Review



# envirotech

Analytical Laboratory

## EPA METHOD 8021 AROMATIC VOLATILE ORGANICS

Client:	N/A	Project #	N/A
Sample ID:	0702BBLK QA/QC	Date Reported	07-05-10
Laboratory Number:	54977	Date Sampled	N/A
Sample Matrix:	Soil	Date Received	N/A
Preservative:	N/A	Date Analyzed	07-02-10
Condition:	N/A	Analysis	BTEX

Calibration and Detection Limits (ug/L)	I-Cal RF:	C-Cal RF:	%Diff.	Blank Conc	Detect. Limit
		Accept. Range 0 - 15%			
Benzene	1.2508E+006	1.2533E+006	0.2%	ND	0.1
Toluene	1.1592E+006	1.1615E+006	0.2%	ND	0.1
Ethylbenzene	1.0493E+006	1.0514E+006	0.2%	ND	0.1
p,m-Xylene	2.5923E+006	2.5975E+006	0.2%	ND	0.1
o-Xylene	9.6518E+005	9.6711E+005	0.2%	ND	0.1

Duplicate Conc. (ug/Kg)	Sample	Duplicate	%Diff.	Accept Range	Detect. Limit
Benzene	2.1	1.6	23.8%	0 - 30%	0.9
Toluene	2.5	3.0	20.0%	0 - 30%	1.0
Ethylbenzene	1.7	1.6	5.9%	0 - 30%	1.0
p,m-Xylene	7.2	7.2	0.0%	0 - 30%	1.2
o-Xylene	4.8	5.3	10.4%	0 - 30%	0.9


Spike Conc. (ug/Kg)	Sample	Amount Spiked	Spiked Sample	% Recovery	Accept Range
Benzene	2.1	50.0	49.0	94.1%	39 - 150
Toluene	2.5	50.0	49.7	94.7%	46 - 148
Ethylbenzene	1.7	50.0	50.5	97.6%	32 - 160
p,m-Xylene	7.2	100	99.1	92.4%	46 - 148
o-Xylene	4.8	50.0	48.9	89.2%	46 - 148

ND - Parameter not detected at the stated detection limit.

References: Method 5030B, Purge-and-Trap, Test Methods for Evaluating Solid Waste, SW-846, USEPA, December 1996  
Method 8021B, Aromatic and Halogenated Volatiles by Gas Chromatography Using Photoionization and/or Electrolytic Conductivity Detectors, SW-846, USEPA December 1996

Comments: QA/QC for Samples 54977-54980; 54974-54975; 54928-54931

  
Analyst

  
Review



EPA METHOD 418.1  
TOTAL PETROLEUM  
HYDROCARBONS

Client:	WPX	Project #:	04108-0136
Sample ID:	Reserve Pit	Date Reported:	07-02-10
Laboratory Number:	54975	Date Sampled:	06-23-10
Chain of Custody No:	9835	Date Received:	07-01-10
Sample Matrix:	Soil	Date Extracted:	07-02-10
Preservative:	Cool	Date Analyzed:	07-02-10
Condition:	Intact	Analysis Needed:	TPH-418.1

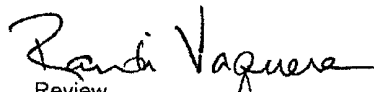
Parameter	Concentration (mg/kg)	Det. Limit (mg/kg)
Total Petroleum Hydrocarbons	22.0	9.6

ND = Parameter not detected at the stated detection limit.

References: Method 418.1, Petroleum Hydrocarbons, Total Recoverable, Chemical Analysis of Water and Waste, USEPA Storet No. 4551, 1978.

Comments: Rosa Unit #137C

  
Analyst

  
Review



**envirotech**  
Analytical Laboratory

**EPA METHOD 418.1  
TOTAL PETROLEUM  
HYDROCARBONS  
QUALITY ASSURANCE REPORT**

Client:	QA/QC	Project #:	N/A
Sample ID:	QA/QC	Date Reported:	07-02-10
Laboratory Number:	07-02-TPH.QA/QC 54974	Date Sampled:	N/A
Sample Matrix:	Freon-113	Date Analyzed:	07-02-10
Preservative:	N/A	Date Extracted:	07-02-10
Condition:	N/A	Analysis Needed:	TPH

Calibration	I-Cal Date	C-Cal Date	I-Cal RF:	C-Cal RF:	% Difference	Accept. Range
	06-30-10	07-02-10	1,716	1,770	3.1%	+/- 10%

Blank Conc. (mg/Kg)	Concentration	Detection Limit
TPH	ND	9.6

Duplicate Conc. (mg/Kg)	Sample	Duplicate	% Difference	Accept. Range
TPH	94.8	86.5	8.8%	+/- 30%


Spike Conc. (mg/Kg)	Sample	Spike Added	Spike Result	% Recovery	Accept Range
TPH	94.8	2,000	2,090	99.8%	80 - 120%

ND = Parameter not detected at the stated detection limit.

References: Method 418.1, Petroleum Hydrocarbons, Total Recoverable, Chemical Analysis of Water and Waste, USEPA Storet No. 4551, 1978.

Comments: QA/QC for Samples 54974-54975; 54979-54980; 54988, 54899; 54954-54955 and 54985-54986

  
Analyst

  
Review



**envirotech**  
Analytical Laboratory

**Chloride**

Client:	WPX	Project #:	04108-0136
Sample ID:	Reserve Pit	Date Reported:	07-02-10
Lab ID#:	54975	Date Sampled:	06-23-10
Sample Matrix:	Soil	Date Received:	07-01-10
Preservative:	Cool	Date Analyzed:	07-02-10
Condition:	Intact	Chain of Custody:	9835

**Parameter**

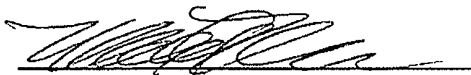
**Concentration (mg/Kg)**

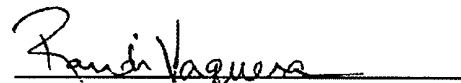
**Total Chloride**

**5**

Reference: U.S.E.P.A , 4500B, "Methods for Chemical Analysis of Water and Wastes", 1983.  
Standard Methods For The Examination of Water And Waste Water", 18th ed., 1992.

Comments: **Rosa Unit #137C**

  
Analyst

  
Review

# CHAIN OF CUSTODY RECORD

09835 **RUSH**

Client: <b>WPX</b>		Project Name / Location: <b>Rosa Unit #137C</b>			ANALYSIS / PARAMETERS														
Client Address: <b>myke Lane</b>		Sampler Name: <b>Glen Shelby</b>			TPH (Method 8015)	BTEX (Method 8021)	VOC (Method 8260)	RCRA 8 Metals	Cation / Anion	RCI	TCLP with H/P	PAH	TPH (418.1)	CHLORIDE				Sample Cool	Sample Intact
Client Phone No.:		Client No.: <b>04108-0136</b>																	
Sample No./ Identification	Sample Date	Sample Time	Lab No.	Sample Matrix	No./Volume of Containers	Preservative													
				Soil Solid	Sludge Aqueous	1													
<b>Reserve Pit</b>	<b>6/23/10</b>	<b>1:45 PM</b>	<b>54975</b>	Soil Solid	Sludge Aqueous														
				Soil Solid	Sludge Aqueous														
				Soil Solid	Sludge Aqueous														
				Soil Solid	Sludge Aqueous														
				Soil Solid	Sludge Aqueous														
				Soil Solid	Sludge Aqueous														
				Soil Solid	Sludge Aqueous														
				Soil Solid	Sludge Aqueous														
				Soil Solid	Sludge Aqueous														
				Soil Solid	Sludge Aqueous														
				Soil Solid	Sludge Aqueous														
				Soil Solid	Sludge Aqueous														
Relinquished by: (Signature)					Date	Time	Received by: (Signature)					Date	Time						
					<b>7/1/10</b>	<b>10:00 AM</b>						<b>7/1/10</b>	<b>10:03</b>						
Relinquished by: (Signature)							Received by: (Signature)												
Relinquished by: (Signature)							Received by: (Signature)												

**RUSH** Per **Tasha** 7/1/10 10:28 am **envirotech**  
Analytical Laboratory  
5796 US Highway 64 • Farmington, NM 87401 • 505-632-0615 • lab@envirotech-inc.com

**Meador, Tasha**

---

**From:** Glenn Shelby [glenn@adobecontractorsinc.com]  
**Sent:** Thursday, May 27, 2010 12:14 PM  
**To:** Bill Liess; Bob Switzer; Randy Mckee, Sherrie Landon  
**Cc:** Meador, Tasha; Johnny Stinson; Lane, Myke  
**Subject:** Rosa Unit 137C

We will be moving equipment to the Rosa Unit 137C today, and starting the cleanup on June 1st. Let me know if you have any questions.

Thanks,  
Glenn Shelby  
Field Foreman  
Adobe Contractors, Inc  
Cell 320-7187  
[glenn@adobecontractorsinc.com](mailto:glenn@adobecontractorsinc.com)

7/21/2010

**Meador, Tasha**

---

**From:** Glenn Shelby [glenn@adobecontractorsinc.com]  
**Sent:** Thursday, May 27, 2010 12:18 PM  
**To:** Bryce Hammond  
**Cc:** Johnny Stinson; Lane, Myke; Meador, Tasha  
**Subject:** Williams Cleanups

We will be moving equipment to the Rosa Unit 137C today, and starting the cleanup on June 1st. Let me know if you have any questions.

Thanks,  
Glenn Shelby  
Field Foreman  
Adobe Contractors, Inc  
Cell: 320-7187  
[glenn@adobecontractorsinc.com](mailto:glenn@adobecontractorsinc.com)

7/21/2010

**Meador, Tasha**

---

**From:** Glenn Shelby [glenn@adobecontractorsinc.com]  
**Sent:** Friday, May 28, 2010 3:25 PM  
**To:** Brandon Powell  
**Cc:** Johnny Stinson; Lane, Myke; Meador, Tasha  
**Subject:** Williams cleanups

We will be moving equipment to the Rosa Unit 137C today, and starting the cleanup on June 1st. Let me know if you have any questions.

Thanks,

Glenn Shelby  
Field Foreman  
Adobe Contractors, Inc  
Cell: 320-7187  
[glenn@adobecontractorsinc.com](mailto:glenn@adobecontractorsinc.com)

7/21/2010

UNITED STATES  
DEPARTMENT OF THE INTERIOR  
BUREAU OF LAND MANAGEMENT

SUBMIT IN  
DUPLICATE

(See other instructions on  
reverse side)

FORM APPROVED  
OMB NO 1004-0137  
Expires February 28, 1995

5 LEASE DESIGNATION AND LEASE NO  
NMSF-078764

6 IF INDIAN, ALLOTTEE OR

WELL COMPLETION OR RECOMPLETION REPORT AND LOG\*

1a TYPE OF WELL ☐ OIL WELL ☒ GAS WELL ☐ DRY ☐ OTHER

b TYPE OF COMPLETION  
☒ NEW WELL ☐ WORKOVER ☐ DEEPEN ☐ PLUG BACK ☐ DIFF RESVR ☐ OTHER

7 UNIT AGREEMENT NAME

Rosa Unit

2 NAME OF OPERATOR

WILLIAMS PRODUCTION COMPANY

8 FARM OR LEASE NAME, WELL NO

Rosa Unit #137C

3 ADDRESS AND TELEPHONE NO

P O Box 640, Aztec, NM 87410 (505) 634-4208

9 API WELL NO

30-039-30691

4 LOCATION OF WELL (Report location clearly and in accordance with any State requirements)\*

At Surface 730' FSL & 2175' FEL, sec 31, T31N, R5W  
At top production interval reported below Same  
At total depth Same

10 FIELD AND POOL, OR WILDCAT  
Blanco Mesaverde

11 SEC, T, R, M, OR BLOCK AND  
SURVEY OR AREA

Sec 31, T31N, R5W

14 PERMIT NO

DATE ISSUED

12 COUNTY OR

Rio Arriba

13 STATE

New Mexico

15 DATE  
SPUDDED  
4-25-09

16 DATE T D  
REACHED  
5-4-09

17 DATE COMPLETED (READY TO PRODUCE)  
11-13-09

18 ELEVATIONS (DK, RKB, RT, GR, ETC)\*  
6448' GR

19 ELEVATION CASINGHEAD

20 TOTAL DEPTH, MD & TVD  
7982'

21 PLUG, BACK T D, MD & TVD  
7974' MD

22 IF MULTICOMP,  
HOW MANY  
3\*

23 INTERVALS  
DRILLED BY

ROTARY TOOLS  
x

CABLE TOOLS

24 PRODUCING INTERVAL(S), OF THIS COMPLETION - TOP, BOTTOM, NAME (MD AND TVD)\*

BLANCO MESAVERDE 5396'-5961' MD

Commungled with MC & DK per AZT-3270

25 WAS DIRECTIONAL SURVEY MADE

No

26 TYPE ELECTRIC AND OTHER LOGS RUN

Array Induction, Gamma Ray-Density-Neutron, Temperature and CBL

27 WAS WELL CORED

No

28 CASING REPORT (Report all strings set in well)

CASING SIZE/GRADE	WEIGHT, LB/FT	DEPTH SET (MD)	HOLE SIZE	TOP OF CEMENT, CEMENTING RECORD	AMOUNT PULLED
10-3/4", J-55	40 5#	360'	14-3/4"	290 SX - SURFACE	
7-5/8", J-55	26 4#	3730'	9-7/8"	690 SX - SURFACE	
5-1/2", N-80	17 0#	7981'	6-3/4"	325 SX - 3780' (CBL)	

29 LINER RECORD

SIZE	TOP (MD)	BOTTOM (MD)	SACKS CEMENT*	SCREEN (MD)	SIZE	DEPTH SET (MD)	PACKER SET (MD)
					2 875", 6 5#, J-55, EUE 8rd	7940'	none

31 PERFORATION RECORD (Interval, size, and number)

32 ACID, SHOT, FRACTURE, CEMENT SQUEEZE, ETC

DEPTH INTERVAL  
(MD)

AMOUNT AND KIND OF MATERIAL USED

Upper MV Total of 57, 0 34" holes

5396'-5612'

Faced with 80,110# 20/40 mesh BASF

Lower MV Total of 58, 0 34" holes

5638'-5961'

Faced with 81,110 20/40 mesh BASF

33 PRODUCTION

DATE OF FIRST PRODUCTION		PRODUCTION METHOD (Flowing, gas lift, pumping-size and type of pump)				WELL STATUS (PRODUCING OR SI)	
						producing	
DATE OF TEST	TESTED	CHOKE SIZE	PROD'N FOR TEST PERIOD	OIL - BBL	GAS - MCF	WATER - BBL	GAS-OIL RATIO
11-12-09	20 hr	1/2"					
FLOW TBG PRESS	CASING PRESSURE	CALCULATED 24-HOUR RATE		OIL - BBL	GAS - MCF	WATER - BBL	OIL GRAVITY-API (CORR)
0	410 lb				957 mcf/d		

34 DISPOSITION OF GAS (Sold, used for fuel, vented, etc) TO BE SOLD

TEST WITNESSED BY Weldon Higgins

35 LIST OF ATTACHMENTS

SUMMARY OF POROUS ZONES, WELLBORE DIAGRAM

36 I hereby certify that the foregoing and attached information is complete and correct as determined from all available records

SIGNED \_\_\_\_\_ TITLE Drlg COM DATE 11-16-09

UNITED STATES  
DEPARTMENT OF THE INTERIOR  
BUREAU OF LAND MANAGEMENT

SUBMIT IN  
DUPLICATE

(See other instructions on  
reverse side)

FORM APPROVED  
OMB NO 1004-0137  
Expires February 28, 1995

5 LEASE DESIGNATION AND LEASE NO  
NMSF-078764

6 IF INDIAN, ALLOTTEE OR

WELL COMPLETION OR RECOMPLETION REPORT AND LOG\*

7 UNIT AGREEMENT NAME

Rosa Unit

1a TYPE OF WELL 1 OIL WELL ☒ GAS WELL DRY OTHER

b TYPE OF COMPLETION  
☒ NEW WELL WORKOVER DEEPEN PLUG BACK DIFF RESVR OTHER

2 NAME OF OPERATOR  
WILLIAMS PRODUCTION COMPANY

8 FARM OR LEASE NAME, WELL NO  
Rosa Unit #137C

3 ADDRESS AND TELEPHONE NO  
P O Box 640, Aztec, NM 87410 (505) 634-4208

9 API WELL NO  
30-039-30691

4 LOCATION OF WELL (Report location clearly and in accordance with any State requirements)\*  
At Surface 730' FSL & 2175' FEL, sec 31, T31N, R5W  
At top production interval reported below Same  
At total depth Same

10 FIELD AND POOL, OR WILDCAT  
Basin Dakota

11 SEC, T, R, M, OR BLOCK AND  
SURVEY OR AREA  
Sec 31, T31N, R5W

14 PERMIT NO

DATE ISSUED

12 COUNTY OR

13 STATE  
Rio Arriba New Mexico

15 DATE  
SPUDDED  
4-25-09

16 DATE T D  
REACHED  
5-4-09

17 DATE COMPLETED (READY TO PRODUCE)  
5-28-09

18 ELEVATIONS (DK, RKB, RT, GR, ETC)\*  
6448' GR

19 ELEVATION CASINGHEAD

20 TOTAL DEPTH, MD & TVD  
7982'

21 PLUG, BACK T D, MD & TVD  
7974' MD

22 IF MULTICOMP,  
HOW MANY  
3\*

23 INTERVALS  
DRILLED BY

ROTARY TOOLS  
x

CABLE TOOLS

24 PRODUCING INTERVAL(S), OF THIS COMPLETION - TOP, BOTTOM, NAME (MD AND TVD)\*  
BASIN DAKOTA 7870' - 7963' MD \* Mesaverde and Mancos to be completed at later date

25 WAS DIRECTIONAL SURVEY MADE  
No

26 TYPE ELECTRIC AND OTHER LOGS RUN  
Array Induction, Gamma Ray-Density-Neutron, Temperature and CBL

27 WAS WELL CORED  
No

28 CASING REPORT (Report all strings set in well)

CASING SIZE/GRADE	WEIGHT, LB/FT	DEPTH SET (MD)	HOLE SIZE	TOP OF CEMENT, CEMENTING RECORD	AMOUNT PULLED
10-3/4", J-55	40 5#	360'	14-3/4"	290 SX - SURFACE	
7-5/8", J-55	26 4#	3730'	9-7/8"	690 SX - SURFACE	
5-1/2", N-80	17 0#	7981'	6-3/4"	325 SX - 3780' (CBL)	

29 LINER RECORD

SIZE	TOP (MD)	BOTTOM (MD)	SACKS CEMENT*	SCREEN (MD)	SIZE	DEPTH SET (MD)	PACKER SET (MD)
					2 875", 6 5#, J-55, EUE 8rd	7959'	none

31 PERFORATION RECORD (Interval, size, and number)

Dakota 7870' - 7963' Total of 81, 0 34" holes

32 ACID, SHOT, FRACTURE, CEMENT SQUEEZE, ETC

DEPTH INTERVAL (MD)	AMOUNT AND KIND OF MATERIAL USED
7870' - 7963'	Fraced with 7089# 100 mesh BASF followed w/82,250# 40/70 mesh BASF

33 PRODUCTION

DATE OF FIRST PRODUCTION		PRODUCTION METHOD (Flowing, gas lift, pumping-size and type of pump)				WELL STATUS (PRODUCING OR SI)	
						SI - waiting on tie-in	
DATE OF TEST	TESTED	CHOKE SIZE	PROD'N FOR TEST PERIOD	OIL - BBL	GAS - MCF	WATER - BBL	GAS-OIL RATIO
5-26-09	10 hr	2"					
FLOW TBG PRESS	CASING PRESSURE	CALCULATED 24-HOUR RATE		OIL - BBL	GAS - MCF	WATER - BBL	OIL GRAVITY-API (CORR)
0	15 lb				752 mcf/d		

34 DISPOSITION OF GAS (Sold, used for fuel, vented, etc) TO BE SOLD

TEST WITNESSED BY Weldon Higgins

35 LIST OF ATTACHMENTS SUMMARY OF POROUS ZONES, WELLBORE DIAGRAM

36 I hereby certify that the foregoing and attached information is complete and correct as determined from all available records

SIGNED \_\_\_\_\_ TITLE Drlg COM DATE 5-29-09

UNITED STATES  
DEPARTMENT OF THE INTERIOR  
BUREAU OF LAND MANAGEMENT

SUBMIT IN  
DUPLICATE

(See other instructions on  
reverse side)

FORM APPROVED  
OMB NO 1004-0137  
Expires February 28, 1995

5 LEASE DESIGNATION AND LEASE NO NMSF-078764							
6 IF INDIAN, ALLOTTEE OR							
7 UNIT AGREEMENT NAME Rosa Unit							
8 FARM OR LEASE NAME, WELL NO Rosa Unit #137C							
9 API WELL NO 30-039-30691							
10 FIELD AND POOL, OR WILDCAT Basin Mancos							
11 SEC. T, R, M, OR BLOCK AND SURVEY OR AREA Sec 31, T31N, R5W							
12 COUNTY OR Rio Arriba		13 STATE New Mexico					
14 PERMIT NO							
DATE ISSUED							
15 DATE SPUDDED 4-25-09							
16 DATE T D REACHED 5-4-09		17 DATE COMPLETED (READY TO PRODUCE) 11-13-09		18 ELEVATIONS (DK, RKB, RT, GR, ETC)* 6448' GR			
19 ELEVATION CASINGHEAD							
20 TOTAL DEPTH, MD & TVD 7982'		21 PLUG, BACK T D, MD & TVD 7974' MD		22 IF MULTICOMP, HOW MANY 3*			
23 INTERVALS DRILLED BY		ROTARY TOOLS x		CABLE TOOLS			
24 PRODUCING INTERVAL(S), OF THIS COMPLETION - TOP, BOTTOM, NAME (MD AND TVD)* BASIN MANCOS 6770'-7270' MD Commingled with MV & DK per AZT-3270							
25 WAS DIRECTIONAL SURVEY MADE No							
26 TYPE ELECTRIC AND OTHER LOGS RUN Array Induction, Gamma Ray-Density-Neutron, Temperature and CBL							
27 WAS WELL CORED No							
28 CASING REPORT (Report all strings set in well)							
CASING SIZE/GRADE		WEIGHT, LB/FT	DEPTH SET (MD)	HOLE SIZE	TOP OF CEMENT, CEMENTING RECORD	AMOUNT PULLED	
10-3/4", J-55		40 5#	360'	14-3/4"	290 SX - SURFACE		
7-5/8", J-55		26 4#	3730'	9-7/8"	690 SX - SURFACE		
5-1/2", N-80		17 0#	7981'	6-3/4"	325 SX -- 3780' (CBL)		
29 LINER RECORD							
SIZE	TOP (MD)	BOTTOM (MD)	SACKS CEMENT*	SCREEN (MD)	SIZE	DEPTH SET (MD)	PACKER SET (MD)
					2 875", 6 5#, J-55, EUE 8rd	7940'	none
31 PERFORATION RECORD (Interval, size, and number)				32 ACID, SHOT, FRACTURE, CEMENT SQUEEZE, ETC			
				DEPTH INTERVAL (MD)	AMOUNT AND KIND OF MATERIAL USED		
<u>Upper MC</u> Total of 84, 0 34" holes				6770'-7040'	Fraced with 4986# 100 mesh BASF followed with 104,214# 40/70 mesh BASF		
<u>Lower MC</u> Total of 68, 0 34" holes				7080'-7270'	Fraced with 5043# 100 mesh BASF followed with 100,040# 40/70 BASF		
33 PRODUCTION							
DATE OF FIRST PRODUCTION		PRODUCTION METHOD (Flowing, gas lift, pumping-size and type of pump)			WELL STATUS (PRODUCING OR SI)		
					producing		
DATE OF TEST	TESTED	CHOKE SIZE	PROD'N FOR TEST PERIOD	OIL - BBL	GAS - MCF	WATER - BBL	GAS-OIL RATIO
11-12-09	2 0 hr	1/2"					
FLOW TBG PRESS	CASING PRESSURE	CALCULATED 24-HOUR RATE		OIL - BBL	GAS - MCF	WATER - BBL	OIL GRAVITY-API (CORR )
0	410 lb				908 mcf/d		
34 DISPOSITION OF GAS (Sold, used for fuel, vented, etc ) TO BE SOLD						TEST WITNESSED BY Weldon Higgins	
35 LIST OF ATTACHMENTS SUMMARY OF POROUS ZONES, WELLBORE DIAGRAM							
36 I hereby certify that the foregoing and attached information is complete and correct as determined from all available records							

SIGNED \_\_\_\_\_ TITLE Drlg COM DATE 11-16-09



Exploration & Production  
San Juan Basin Operations  
720 So. Main / PO Box 640  
Aztec, NM 87410  
505-634-4200 / 505-634-4205 fax

## Temporary Pit Inspection

### FACILITY INFORMATION

Facility Name: Rosa unit# 168-C	API #: 30-039-30003
---------------------------------	---------------------

Pit Type: <input checked="" type="checkbox"/> Drilling <input type="checkbox"/> Workover <input type="checkbox"/> Cavitation	Inspection: <input checked="" type="checkbox"/> Daily <input type="checkbox"/> Weekly <input type="checkbox"/> Monthly
------------------------------------------------------------------------------------------------------------------------------	------------------------------------------------------------------------------------------------------------------------

Pit Liner intact (no visible tears)	<input checked="" type="checkbox"/> Yes <input type="checkbox"/> No If No, Report to EH&S immediately	Date / Time Reported:
Pit Properly Fenced (no fence on rig side if on site)	<input checked="" type="checkbox"/> Yes <input type="checkbox"/> No <input type="checkbox"/> Not Required (if site fully fenced)	
Pit Slopes intact	<input checked="" type="checkbox"/> Yes <input type="checkbox"/> No	
Adequate freeboard (liquid level 2 vertical feet from berm top)	<input checked="" type="checkbox"/> Yes <input type="checkbox"/> No <input type="checkbox"/> Not Applicable	
Free oil or sheen present on pit	<input type="checkbox"/> Yes <input checked="" type="checkbox"/> No	
Flare Pit free of liquids	<input checked="" type="checkbox"/> Yes <input type="checkbox"/> No <input type="checkbox"/> Not Applicable	
Comments:		
Inspector Signature: Willie Mock		
Printed Name: Willie Mock		
Title: Drlg Consultant ( TDCI )		
Date: 04/24/2009 Phone: ( 505 ) 793-0528		

Record Retention. Submit with Closure  
File: EH&S



Exploration & Production  
San Juan Basin Operations  
720 So. Main / PO Box 640  
Aztec, NM 87410  
505-634-4200 / 505-634-4205 fax

## Temporary Pit Inspection

### FACILITY INFORMATION

Facility Name: Rosa unit# 137-C	API #: 30-039-30691
---------------------------------	---------------------

Pit Type: <input checked="" type="checkbox"/> Drilling <input type="checkbox"/> Workover <input type="checkbox"/> Cavitation	Inspection: <input checked="" type="checkbox"/> Daily <input type="checkbox"/> Weekly <input type="checkbox"/> Monthly
------------------------------------------------------------------------------------------------------------------------------	------------------------------------------------------------------------------------------------------------------------

Pit Liner intact (no visible tears)	<input checked="" type="checkbox"/> Yes <input type="checkbox"/> No If No, Report to EH&S immediately	Date / Time Reported:
Pit Properly Fenced (no fence on rig side if on site)	<input checked="" type="checkbox"/> Yes <input type="checkbox"/> No <input type="checkbox"/> Not Required (if site fully fenced)	
Pit Slopes intact	<input checked="" type="checkbox"/> Yes <input type="checkbox"/> No	
Adequate freeboard (liquid level 2 vertical feet from berm top)	<input checked="" type="checkbox"/> Yes <input type="checkbox"/> No <input type="checkbox"/> Not Applicable	
Free oil or sheen present on pit	<input type="checkbox"/> Yes <input checked="" type="checkbox"/> No	
Flare Pit free of liquids	<input checked="" type="checkbox"/> Yes <input type="checkbox"/> No <input type="checkbox"/> Not Applicable	

Comments:		
Inspector Signature: Willie Mock		
Printed Name: Willie Mock		
Title: Drlg Consultant ( TDCI )		
Date: 04/25/2009 Phone: ( 505 ) 793-0528		

Record Retention: Submit with Closure  
File: EH&S



Exploration & Production  
San Juan Basin Operations  
720 So. Main / PO Box 640  
Aztec, NM 87410  
505-634-4200 / 505-634-4205 fax

## Temporary Pit Inspection

### FACILITY INFORMATION

Facility Name: Rosa unit# 137-C	API #: 30-039-30691
---------------------------------	---------------------

Pit Type: <input checked="" type="checkbox"/> Drilling <input type="checkbox"/> Workover <input type="checkbox"/> Cavitation	Inspection: <input checked="" type="checkbox"/> Daily <input type="checkbox"/> Weekly <input type="checkbox"/> Monthly
------------------------------------------------------------------------------------------------------------------------------	------------------------------------------------------------------------------------------------------------------------

Pit Liner intact (no visible tears)	<input checked="" type="checkbox"/> Yes <input type="checkbox"/> No If No, Report to EH&S immediately	Date / Time Reported:
Pit Properly Fenced (no fence on rig side if on site)	<input checked="" type="checkbox"/> Yes <input type="checkbox"/> No <input type="checkbox"/> Not Required (if site fully fenced)	
Pit Slopes intact	<input checked="" type="checkbox"/> Yes <input type="checkbox"/> No	
Adequate freeboard (liquid level 2 vertical feet from berm top)	<input checked="" type="checkbox"/> Yes <input type="checkbox"/> No <input type="checkbox"/> Not Applicable	
Free oil or sheen present on pit	<input type="checkbox"/> Yes <input checked="" type="checkbox"/> No	
Flare Pit free of liquids	<input checked="" type="checkbox"/> Yes <input type="checkbox"/> No <input type="checkbox"/> Not Applicable	

Comments:		
Inspector Signature: Willie Mock		
Printed Name: Willie Mock		
Title: Drlg Consultant ( TDCI )		
Date: 04/26/2009	Phone: ( 505 ) 793-0528	

Record Retention: Submit with Closure  
File: EH&S



Exploration & Production  
San Juan Basin Operations  
720 So. Main / PO Box 640  
Aztec, NM 87410  
505-634-4200 / 505-634-4205 fax

## Temporary Pit Inspection

### FACILITY INFORMATION

Facility Name: Rosa unit# 137-C

API #: 30-039-30691

Pit Type: ☒ Drilling ☐ Workover ☐ Cavitation Inspection: ☒ Daily ☐ Weekly ☐ Monthly

Pit Liner intact (no visible tears)	<input checked="" type="checkbox"/> Yes <input type="checkbox"/> No If No, Report to EH&S immediately	Date / Time Reported:
Pit Properly Fenced (no fence on rig side if on site)	<input checked="" type="checkbox"/> Yes <input type="checkbox"/> No <input type="checkbox"/> Not Required (if site fully fenced)	
Pit Slopes intact	<input checked="" type="checkbox"/> Yes <input type="checkbox"/> No	
Adequate freeboard (liquid level 2 <u>vertical</u> feet from berm top)	<input checked="" type="checkbox"/> Yes <input type="checkbox"/> No <input type="checkbox"/> Not Applicable	
Free oil or sheen present on pit	<input type="checkbox"/> Yes <input checked="" type="checkbox"/> No	
Flare Pit free of liquids	<input checked="" type="checkbox"/> Yes <input type="checkbox"/> No <input type="checkbox"/> Not Applicable	
Comments:		
Inspector Signature: Willie Mock		
Printed Name: Willie Mock		
Title: Drlg Consultant ( TDCI )		
Date: 04/27/2009 Phone: ( 505 ) 793-0528		

Record Retention: Submit with Closure  
File: EH&S



Exploration & Production  
San Juan Basin Operations  
720 So. Main / PO Box 640  
Aztec, NM 87410  
505-634-4200 / 505-634-4205 fax

## Temporary Pit Inspection

### FACILITY INFORMATION

Facility Name: Rosa unit# 137-C	API #: 30-039-30691
---------------------------------	---------------------

Pit Type: <input checked="" type="checkbox"/> Drilling <input type="checkbox"/> Workover <input type="checkbox"/> Cavitation	Inspection: <input checked="" type="checkbox"/> Daily <input type="checkbox"/> Weekly <input type="checkbox"/> Monthly
------------------------------------------------------------------------------------------------------------------------------	------------------------------------------------------------------------------------------------------------------------

Pit Liner intact (no visible tears)	<input checked="" type="checkbox"/> Yes <input type="checkbox"/> No If No, Report to EH&S immediately	Date / Time Reported:
Pit Properly Fenced (no fence on rig side if on site)	<input checked="" type="checkbox"/> Yes <input type="checkbox"/> No <input type="checkbox"/> Not Required (if site fully fenced)	
Pit Slopes intact	<input checked="" type="checkbox"/> Yes <input type="checkbox"/> No	
Adequate freeboard (liquid level 2 vertical feet from berm top)	<input checked="" type="checkbox"/> Yes <input type="checkbox"/> No <input type="checkbox"/> Not Applicable	
Free oil or sheen present on pit	<input type="checkbox"/> Yes <input checked="" type="checkbox"/> No	
Flare Pit free of liquids	<input checked="" type="checkbox"/> Yes <input type="checkbox"/> No <input type="checkbox"/> Not Applicable	

Comments:		
Inspector Signature: Willie Mock		
Printed Name: Willie Mock		
Title: Drlg Consultant ( TDCI )		
Date: 04/28/2009	Phone: ( 505 ) 793-0528	

Record Retention: Submit with Closure  
File: EH&S



Exploration & Production  
San Juan Basin Operations  
720 So. Main / PO Box 640  
Aztec, NM 87410  
505-634-4200 / 505-634-4205 fax

## Temporary Pit Inspection

### FACILITY INFORMATION

Facility Name: Rosa unit# 137-C	API #: 30-039-30691
---------------------------------	---------------------

Pit Type: <input checked="" type="checkbox"/> Drilling <input type="checkbox"/> Workover <input type="checkbox"/> Cavitation	Inspection: <input checked="" type="checkbox"/> Daily <input type="checkbox"/> Weekly <input type="checkbox"/> Monthly
------------------------------------------------------------------------------------------------------------------------------	------------------------------------------------------------------------------------------------------------------------

Pit Liner intact (no visible tears)	<input checked="" type="checkbox"/> Yes <input type="checkbox"/> No If No, Report to EH&S immediately	Date / Time Reported:
Pit Properly Fenced (no fence on rig side if on site)	<input checked="" type="checkbox"/> Yes <input type="checkbox"/> No <input type="checkbox"/> Not Required (if site fully fenced)	
Pit Slopes intact	<input checked="" type="checkbox"/> Yes <input type="checkbox"/> No	
Adequate freeboard (liquid level 2 vertical feet from berm top)	<input checked="" type="checkbox"/> Yes <input type="checkbox"/> No <input type="checkbox"/> Not Applicable	
Free oil or sheen present on pit	<input type="checkbox"/> Yes <input checked="" type="checkbox"/> No	
Flare Pit free of liquids	<input checked="" type="checkbox"/> Yes <input type="checkbox"/> No <input type="checkbox"/> Not Applicable	
Comments:		
Inspector Signature: WILLIE MOCK		
Printed Name: WILLIE MOCK		
Title: Drlg Consultant ( TDCI )		
Date: 05/06/2009 Phone: ( 505 ) 793-0528		

Record Retention: Submit with Closure  
File: EH&S



Exploration & Production  
San Juan Basin Operations  
720 So. Main / PO Box 640  
Aztec, NM 87410  
505-634-4200 / 505-634-4205 fax

## Temporary Pit Inspection

### FACILITY INFORMATION

Facility Name: Rosa unit# 137-C	API #: 30-039-30691
---------------------------------	---------------------

Pit Type: <input checked="" type="checkbox"/> Drilling <input type="checkbox"/> Workover <input type="checkbox"/> Cavitation	Inspection: <input checked="" type="checkbox"/> Daily <input type="checkbox"/> Weekly <input type="checkbox"/> Monthly
------------------------------------------------------------------------------------------------------------------------------	------------------------------------------------------------------------------------------------------------------------

Pit Liner intact (no visible tears)	<input checked="" type="checkbox"/> Yes <input type="checkbox"/> No If No, Report to EH&S immediately	Date / Time Reported:
Pit Properly Fenced (no fence on rig side if on site)	<input checked="" type="checkbox"/> Yes <input type="checkbox"/> No <input type="checkbox"/> Not Required (if site fully fenced)	
Pit Slopes intact	<input checked="" type="checkbox"/> Yes <input type="checkbox"/> No	
Adequate freeboard (liquid level 2 <u>vertical</u> feet from berm top)	<input checked="" type="checkbox"/> Yes <input type="checkbox"/> No <input type="checkbox"/> Not Applicable	
Free oil or sheen present on pit	<input type="checkbox"/> Yes <input checked="" type="checkbox"/> No	
Flare Pit free of liquids	<input checked="" type="checkbox"/> Yes <input type="checkbox"/> No <input type="checkbox"/> Not Applicable	
Comments:		
Inspector Signature: WILLIE MOCK		
Printed Name: WILLIE MOCK		
Title: Drlg Consultant ( TDCI )		
Date: 05/07/2009 Phone: ( 505 ) 793-0528		

Record Retention: Submit with Closure  
File: EH&S

Exploration & Production  
San Juan Basin Operations  
720 So. Main / PO Box 640  
Aztec, NM 87410  
505-634-4200 / 505-634-4205 fax



## Temporary Pit Inspection

### FACILITY INFORMATION

<b>Facility Name:</b>	<b>API #:</b>
-----------------------	---------------

<b>Pit Type:</b>	Drilling	Workover	X Completion	<b>Inspection:</b>	Daily (Rig)	Weekly (Tech)
------------------	----------	----------	--------------	--------------------	-------------	---------------

Pit Liner intact (no visible tears)	X Yes    No    If No, Report to EH&S immediately	Date / 5/15/09 Time Reported: 09:00
Pit Properly Fenced (no fence on rig side if on site)	X Yes    No    Not Required (if site fully fenced)	
Pit Slopes intact	X Yes    No	
Adequate freeboard (liquid level 2 vertical feet from berm top)	X Yes    No    Not Applicable	
Free oil or sheen present on pit	Yes    X No	
Flare Pit free of liquids	X Yes    No    Not Applicable	
Comments:		
Inspector Signature:		
Printed Name: Craig Ward		
Title: rig consultant		
Date: 5/15/09                      Phone: 505-793-3099		

Record Retention. Submit with Closure  
File: EH&S Well Files



**William's**

Exploration & Production  
San Juan Basin Operations  
720 So. Main / PO Box 640  
Aztec, NM 87410  
505-634-4200 / 505-634-4205 fax



## Temporary Pit Inspection

### FACILITY INFORMATION

Facility Name: Rosa Unit #137C	API #: 30 - 039 - 30691
--------------------------------	-------------------------

Pit Type:	Drilling	Workover	X Completion	Inspection:	Daily (Rig)	Weekly (Tech)
-----------	----------	----------	--------------	-------------	-------------	---------------

Pit Liner intact (no visible tears)	X Yes	No	If No, Report to EH&S immediately	Date / 5/15/09 Time Reported: 09:00
Pit Properly Fenced (no fence on rig side if on site)	X Yes	No	Not Required (if site fully fenced)	
Pit Slopes intact	X Yes	No		
Adequate freeboard (liquid level 2 vertical feet from berm top)	X Yes	No	Not Applicable	
Free oil or sheen present on pit	Yes	X No		
Flare Pit free of liquids	X Yes	No	Not Applicable	

Comments:	
Inspector Signature:	
Printed Name: Dalton King	
Title: rig consultant	
Date: 10/11/09	Phone: 505-320-4871

Record Retention: Submit with Closure  
File: EH&S Well Files

Exploration & Production  
San Juan Basin Operations  
720 So. Main / PO Box 640  
Aztec, NM 87410  
505-634-4200 / 505-634-4205 fax



## Temporary Pit Inspection

### FACILITY INFORMATION

Facility Name: Rosa Unit #137C	API #: 30 - 039 -
--------------------------------	-------------------

Pit Type: Drilling	Workover	X Completion	Inspection: Daily (Rig)	Weekly (Tech)
--------------------	----------	--------------	-------------------------	---------------

Pit Liner intact (no visible tears)	X Yes No If No, Report to EH&S immediately	Date Reported:	Time
Pit Properly Fenced (no fence on rig side if on site)	X Yes No Not Required (if site fully fenced)		
Pit Slopes intact	X Yes No		
Adequate freeboard (liquid level 2 <u>vertical</u> feet from berm top)	X Yes No Not Applicable		
Free oil or sheen present on pit	Yes X No		
Flare Pit free of liquids	X Yes No Not Applicable		
Comments:			
Inspector Signature:			
Printed Name: Weldon Higgins			
Title: rig consultant			
Date: 10/26/09		Phone: 505-320-4871	

Record Retention: Submit with Closure  
File: EH&S Well Files

Exploration & Production  
San Juan Basin Operations  
720 So. Main / PO Box 640  
Aztec, NM 87410  
505-634-4200 / 505-634-4205 fax



## Temporary Pit Inspection

### FACILITY INFORMATION

<b>Facility Name:</b> Rosa Unit #137C	<b>API #:</b> 30 – 039 –
---------------------------------------	--------------------------

<b>Pit Type:</b> Drilling        Workover        X Completion	<b>Inspection:</b> Daily (Rig)        Weekly (Tech)
---------------------------------------------------------------	-----------------------------------------------------

Pit Liner intact (no visible tears)	X Yes    No    If No, Report to EH&S immediately	Date Reported:	Time
Pit Properly Fenced (no fence on rig side if on site)	X Yes    No    Not Required (if site fully fenced)		
Pit Slopes intact	X Yes    No		
Adequate freeboard (liquid level 2 <u>vertical</u> feet from berm top)	X Yes    No    Not Applicable		
Free oil or sheen present on pit	Yes    X No		
Flare Pit free of liquids	X Yes    No    Not Applicable		
Comments:			
Inspector Signature:			
Printed Name: Weldon Higgins			
Title: rig consultant			
Date: 10/27/09		Phone: 505-320-4871	

Record Retention: Submit with Closure  
File: EH&S Well Files

Exploration & Production  
San Juan Basin Operations  
720 So. Main / PO Box 640  
Aztec, NM 87410  
505-634-4200 / 505-634-4205 fax



## Temporary Pit Inspection

### FACILITY INFORMATION

<b>Facility Name:</b> Rosa Unit #137C	<b>API #:</b> 30 - 039 -
---------------------------------------	--------------------------

<b>Pit Type:</b>	Drilling	Workover	X Completion	<b>Inspection:</b>	Daily (Rig)	Weekly (Tech)
------------------	----------	----------	--------------	--------------------	-------------	---------------

Pit Liner intact (no visible tears)	X Yes	No	If No, Report to EH&S immediately	Date Reported:	Time
Pit Properly Fenced (no fence on rig side if on site)	X Yes	No	Not Required (if site fully fenced)		
Pit Slopes intact	X Yes	No			
Adequate freeboard (liquid level 2 <u>vertical</u> feet from berm top)	X Yes	No	Not Applicable		
Free oil or sheen present on pit	Yes	X No			
Flare Pit free of liquids	X Yes	No	Not Applicable		

Comments:	
Inspector Signature:	
Printed Name: Weldon Higgins	
Title: rig consultant	
Date: 10/28/09	Phone: 505-320-4871

Record Retention: Submit with Closure  
File: EH&S Well Files

Exploration & Production  
San Juan Basin Operations  
720 So. Main / PO Box 640  
Aztec, NM 87410  
505-634-4200 / 505-634-4205 fax



## Temporary Pit Inspection

### FACILITY INFORMATION

<b>Facility Name:</b> Rosa Unit #137C	<b>API #:</b> 30 – 039 –
---------------------------------------	--------------------------

<b>Pit Type:</b> Drilling        Workover        X Completion	<b>Inspection:</b> Daily (Rig)        Weekly (Tech)
---------------------------------------------------------------	-----------------------------------------------------

Pit Liner intact (no visible tears)	X Yes    No    If No, Report to EH&S immediately	Date Reported:	Time
Pit Properly Fenced (no fence on rig side if on site)	X Yes    No    Not Required (if site fully fenced)		
Pit Slopes intact	X Yes    No		
Adequate freeboard (liquid level 2 vertical feet from berm top)	X Yes    No    Not Applicable		
Free oil or sheen present on pit	Yes    X No		
Flare Pit free of liquids	X Yes    No    Not Applicable		
Comments:			
Inspector Signature:			
Printed Name: Weldon Higgins			
Title: rig consultant			
Date: 10/29/09		Phone: 505-320-4871	

Record Retention: Submit with Closure  
File: EH&S Well Files

Exploration & Production  
San Juan Basin Operations  
720 So. Main / PO Box 640  
Aztec, NM 87410  
505-634-4200 / 505-634-4205 fax



## Temporary Pit Inspection

### FACILITY INFORMATION

<b>Facility Name:</b> Rosa Unit #137C	<b>API #:</b> 30 - 039 -
---------------------------------------	--------------------------

<b>Pit Type:</b>	Drilling	Workover	X Completion	<b>Inspection:</b>	Daily (Rig)	Weekly (Tech)
------------------	----------	----------	--------------	--------------------	-------------	---------------

Pit Liner intact (no visible tears)	X Yes No If No, Report to EH&S immediately	Date Reported:	Time
Pit Properly Fenced (no fence on rig side if on site)	X Yes No Not Required (if site fully fenced)		
Pit Slopes intact	X Yes No		
Adequate freeboard (liquid level 2 vertical feet from berm top)	X Yes No Not Applicable		
Free oil or sheen present on pit	Yes X No		
Flare Pit free of liquids	X Yes No Not Applicable		
Comments:			
Inspector Signature:			
Printed Name: Weldon Higgins			
Title: rig consultant			
Date: 10/30/09		Phone: 505-320-4871	

Record Retention Submit with Closure  
File EH&S Well Files

The Williams logo, featuring the word "Williams" in a bold, italicized serif font, with a stylized swoosh or underline element.

Exploration & Production  
San Juan Basin Operations  
720 So. Main / PO Box 640  
Aztec, NM 87410  
505-634-4200 / 505-634-4205 fax



## Temporary Pit Inspection

### FACILITY INFORMATION

Facility Name: Rosa Unit #137C

API #: 30 - 039 -

Pit Type: Drilling      Workover      X Completion      Inspection:      Daily (Rig)      Weekly (Tech)

Pit Liner intact (no visible tears)	X Yes    No    If No, Report to EH&S immediately	Date Reported:	Time
Pit Properly Fenced (no fence on rig side if on site)	X Yes    No    Not Required (if site fully fenced)		
Pit Slopes intact	X Yes    No		
Adequate freeboard (liquid level 2 vertical feet from berm top)	X Yes    No    Not Applicable		
Free oil or sheen present on pit	Yes    X No		
Flare Pit free of liquids	X Yes    No    Not Applicable		
Comments:			
Inspector Signature:			
Printed Name: Weldon Higgins			
Title: rig consultant			
Date: 11/01/09		Phone: 505-320-4871	

Record Retention: Submit with Closure  
File: EH&S Well Files

Exploration & Production  
San Juan Basin Operations  
720 So. Main / PO Box 640  
Aztec, NM 87410  
505-634-4200 / 505-634-4205 fax



## Temporary Pit Inspection

### FACILITY INFORMATION

<b>Facility Name:</b> Rosa Unit #137C	<b>API #:</b> 30 - 039 -
---------------------------------------	--------------------------

<b>Pit Type:</b> Drilling        Workover        X Completion	<b>Inspection:</b> Daily (Rig)        Weekly (Tech)
---------------------------------------------------------------	-----------------------------------------------------

Pit Liner intact (no visible tears)	X Yes    No    If No, Report to EH&S immediately	Date Reported:	Time
Pit Properly Fenced (no fence on rig side if on site)	X Yes    No    Not Required (if site fully fenced)		
Pit Slopes intact	X Yes    No		
Adequate freeboard (liquid level 2 <u>vertical</u> feet from berm top)	X Yes    No    Not Applicable		
Free oil or sheen present on pit	Yes    X No		
Flare Pit free of liquids	X Yes    No    Not Applicable		
Comments:			
Inspector Signature:			
Printed Name: Weldon Higgins			
Title: rig consultant			
Date: 11/02/09		Phone: 505-320-4871	

Record Retention: Submit with Closure  
File: EH&S Well Files

Exploration & Production  
San Juan Basin Operations  
720 So. Main / PO Box 640  
Aztec, NM 87410  
505-634-4200 / 505-634-4205 fax



## Temporary Pit Inspection

### FACILITY INFORMATION

<b>Facility Name:</b> Rosa Unit #137C	<b>API #:</b> 30 - 039 -
---------------------------------------	--------------------------

<b>Pit Type:</b> Drilling        Workover        X Completion	<b>Inspection:</b> Daily (Rig)        Weekly (Tech)
---------------------------------------------------------------	-----------------------------------------------------

Pit Liner intact (no visible tears)	X Yes    No    If No, Report to EH&S immediately	Date Reported:	Time
Pit Properly Fenced (no fence on rig side if on site)	X Yes    No    Not Required (if site fully fenced)		
Pit Slopes intact	X Yes    No		
Adequate freeboard (liquid level 2 <u>vertical</u> feet from berm top)	X Yes    No    Not Applicable		
Free oil or sheen present on pit	Yes    X No		
Flare Pit free of liquids	X Yes    No    Not Applicable		
Comments:			
Inspector Signature:			
Printed Name: Weldon Higgins			
Title: rig consultant			
Date: 11/04/09		Phone: 505-320-4871	

Record Retention: Submit with Closure  
File: EH&S Well Files

Exploration & Production  
San Juan Basin Operations  
720 So. Main / PO Box 640  
Aztec, NM 87410  
505-634-4200 / 505-634-4205 fax



## Temporary Pit Inspection

### FACILITY INFORMATION

<b>Facility Name:</b> Rosa Unit #137C	<b>API #:</b> 30 - 039 -
---------------------------------------	--------------------------

<b>Pit Type:</b> Drilling        Workover        X Completion	<b>Inspection:</b> Daily (Rig)        Weekly (Tech)
---------------------------------------------------------------	-----------------------------------------------------

Pit Liner intact (no visible tears)	X Yes    No    If No, Report to EH&S immediately	Date Reported:	Time
Pit Properly Fenced (no fence on rig side if on site)	X Yes    No    Not Required (if site fully fenced)		
Pit Slopes intact	X Yes    No		
Adequate freeboard (liquid level 2 <u>vertical</u> feet from berm top)	X Yes    No    Not Applicable		
Free oil or sheen present on pit	Yes    X No		
Flare Pit free of liquids	X Yes    No    Not Applicable		
Comments:			
Inspector Signature:			
Printed Name: Weldon Higgins			
Title: rig consultant			
Date: 11/03/09		Phone: 505-320-4871	

Record Retention: Submit with Closure  
File: EH&S Well Files

Exploration & Production  
San Juan Basin Operations  
720 So. Main / PO Box 640  
Aztec, NM 87410  
505-634-4200 / 505-634-4205 fax



## Temporary Pit Inspection

### FACILITY INFORMATION

<b>Facility Name:</b> Rosa Unit #137C	<b>API #:</b> 30 - 039 -
---------------------------------------	--------------------------

<b>Pit Type:</b> Drilling        Workover        X Completion	<b>Inspection:</b> Daily (Rig)        Weekly (Tech)
---------------------------------------------------------------	-----------------------------------------------------

Pit Liner intact (no visible tears)	X Yes    No    If No, Report to EH&S immediately	Date Reported:	Time
Pit Properly Fenced (no fence on rig side if on site)	X Yes    No    Not Required (if site fully fenced)		
Pit Slopes intact	X Yes    No		
Adequate freeboard (liquid level 2 <u>vertical</u> feet from berm top)	X Yes    No    Not Applicable		
Free oil or sheen present on pit	Yes    X No		
Flare Pit free of liquids	X Yes    No    Not Applicable		
Comments:			
Inspector Signature:			
Printed Name: Weldon Higgins			
Title: rig consultant			
Date: 11/05/09		Phone: 505-320-4871	

Record Retention: Submit with Closure  
File: EH&S Well Files

The Williams logo, featuring the word "Williams" in a bold, italicized serif font, with a stylized swoosh or underline element.



Exploration & Production  
San Juan Basin Operations  
720 So. Main / PO Box 640  
Aztec, NM 87410  
505-634-4200 / 505-634-4205 fax



## Temporary Pit Inspection

### FACILITY INFORMATION

Facility Name: Rosa Unit #137C	API #: 30 - 039 -
--------------------------------	-------------------

Pit Type:	Drilling	Workover	X Completion	Inspection:	Daily (Rig)	Weekly (Tech)
-----------	----------	----------	--------------	-------------	-------------	---------------

Pit Liner intact (no visible tears)	X Yes	No	If No, Report to EH&S immediately	Date Reported:	Time
Pit Properly Fenced (no fence on rig side if on site)	X Yes	No	Not Required (if site fully fenced)		
Pit Slopes intact	X Yes	No			
Adequate freeboard (liquid level 2 vertical feet from berm top)	X Yes	No	Not Applicable		
Free oil or sheen present on pit	Yes	X No			
Flare Pit free of liquids	X Yes	No	Not Applicable		

Comments:

Inspector Signature:

Printed Name: Weldon Higgins

Title: rig consultant

Date: 11/08/09

Phone: 505-320-4871

Record Retention: Submit with Closure  
File: EH&S Well Files

Exploration & Production  
San Juan Basin Operations  
720 So. Main / PO Box 640  
Aztec, NM 87410  
505-634-4200 / 505-634-4205 fax



## Temporary Pit Inspection

### FACILITY INFORMATION

<b>Facility Name:</b> Rosa Unit #137C	<b>API #:</b> 30 – 039 –
---------------------------------------	--------------------------

<b>Pit Type:</b>	Drilling	Workover	X Completion	<b>Inspection:</b>	Daily (Rig)	Weekly (Tech)
------------------	----------	----------	--------------	--------------------	-------------	---------------

Pit Liner intact (no visible tears)	X Yes    No    If No, Report to EH&S immediately	Date Reported:	Time
Pit Properly Fenced (no fence on rig side if on site)	X Yes    No    Not Required (if site fully fenced)		
Pit Slopes intact	X Yes    No		
Adequate freeboard (liquid level 2 vertical feet from berm top)	X Yes    No    Not Applicable		
Free oil or sheen present on pit	Yes    X No		
Flare Pit free of liquids	X Yes    No    Not Applicable		

Comments:	
Inspector Signature:	
Printed Name: Weldon Higgins	
Title: rig consultant	
Date: 11/09/09	Phone: 505-320-4871

Record Retention: Submit with Closure  
File: EH&S Well Files

Exploration & Production  
San Juan Basin Operations  
720 So. Main / PO Box 640  
Aztec, NM 87410  
505-634-4200 / 505-634-4205 fax



## Temporary Pit Inspection

### FACILITY INFORMATION

Facility Name: Rosa Unit #137C	API #: 30 - 039 -
--------------------------------	-------------------

Pit Type:	Drilling	Workover	X Completion	Inspection:	Daily (Rig)	Weekly (Tech)
-----------	----------	----------	--------------	-------------	-------------	---------------

Pit Liner intact (no visible tears)	X Yes	No	If No, Report to EH&S immediately	Date Reported:	Time
Pit Properly Fenced (no fence on rig side if on site)	X Yes	No	Not Required (if site fully fenced)		
Pit Slopes intact	X Yes	No			
Adequate freeboard (liquid level 2 vertical feet from berm top)	X Yes	No	Not Applicable		
Free oil or sheen present on pit	Yes	X No			
Flare Pit free of liquids	X Yes	No	Not Applicable		

Comments:

Inspector Signature:

Printed Name: Weldon Higgins

Title: rig consultant

Date: 11/10/09

Phone: 505-320-4871

Record Retention: Submit with Closure  
File. EH&S Well Files

Exploration & Production  
San Juan Basin Operations  
720 So. Main / PO Box 640  
Aztec, NM 87410  
505-634-4200 / 505-634-4205 fax



## Temporary Pit Inspection

### FACILITY INFORMATION

<b>Facility Name:</b> Rosa Unit #137C	<b>API #:</b> 30 – 039 –
---------------------------------------	--------------------------

<b>Pit Type:</b> Drilling        Workover        X Completion	<b>Inspection:</b> Daily (Rig)        Weekly (Tech)
---------------------------------------------------------------	-----------------------------------------------------

Pit Liner intact (no visible tears)	X Yes    No    If No, Report to EH&S immediately	Date Reported:	Time
Pit Properly Fenced (no fence on rig side if on site)	X Yes    No    Not Required (if site fully fenced)		
Pit Slopes intact	X Yes    No		
Adequate freeboard (liquid level 2 <u>vertical</u> feet from berm top)	X Yes    No    Not Applicable		
Free oil or sheen present on pit	Yes    X No		
Flare Pit free of liquids	X Yes    No    Not Applicable		
Comments:			
Inspector Signature:			
Printed Name: Weldon Higgins			
Title: rig consultant			
Date: 11/11/09		Phone: 505-320-4871	

Record Retention: Submit with Closure  
File: EH&S Well Files

Exploration & Production  
San Juan Basin Operations  
720 So. Main / PO Box 640  
Aztec, NM 87410  
505-634-4200 / 505-634-4205 fax



## Temporary Pit Inspection

### FACILITY INFORMATION

<b>Facility Name:</b> Rosa Unit #137C	<b>API #:</b> 30 - 039 -
---------------------------------------	--------------------------

<b>Pit Type:</b> Drilling        Workover        X Completion	<b>Inspection:</b> Daily (Rig)        Weekly (Tech)
---------------------------------------------------------------	-----------------------------------------------------

Pit Liner intact (no visible tears)	X Yes    No    If No, Report to EH&S immediately	Date Reported:	Time
Pit Properly Fenced (no fence on rig side if on site)	X Yes    No    Not Required (if site fully fenced)		
Pit Slopes intact	X Yes    No		
Adequate freeboard (liquid level 2 vertical feet from berm top)	X Yes    No    Not Applicable		
Free oil or sheen present on pit	Yes    X No		
Flare Pit free of liquids	X Yes    No    Not Applicable		

Comments:

Inspector Signature:

Printed Name: Weldon Higgins

Title: rig consultant

Date: 11/12/09

Phone: 505-320-4871

Record Retention: Submit with Closure  
File: EH&S Well Files

Exploration & Production  
San Juan Basin Operations  
720 So. Main / PO Box 640  
Aztec, NM 87410  
505-634-4200 / 505-634-4205 fax



## Temporary Pit Inspection

### FACILITY INFORMATION

<b>Facility Name:</b> Rosa Unit #137C	<b>API #:</b> 30 - 039 -
---------------------------------------	--------------------------

<b>Pit Type:</b> Drilling        Workover        X Completion	<b>Inspection:</b> Daily (Rig)        Weekly (Tech)
---------------------------------------------------------------	-----------------------------------------------------

Pit Liner intact (no visible tears)	X Yes    No    If No, Report to EH&S immediately	Date Reported:	Time
Pit Properly Fenced (no fence on rig side if on site)	X Yes    No    Not Required (if site fully fenced)		
Pit Slopes intact	X Yes    No		
Adequate freeboard (liquid level 2 vertical feet from berm top)	X Yes    No    Not Applicable		
Free oil or sheen present on pit	Yes    X No		
Flare Pit free of liquids	X Yes    No    Not Applicable		

Comments:

Inspector Signature:

Printed Name: Weldon Higgins

Title: rig consultant

Date: 11/13/09

Phone: 505-320-4871

Record Retention: Submit with Closure  
File: EH&S Well Files

Exploration & Production  
San Juan Basin Operations  
720 So. Main / PO Box 640  
Aztec, NM 87410  
505-634-4200 / 505-634-4205 fax



## Temporary Pit Inspection

### FACILITY INFORMATION

<b>Facility Name:</b> Rosa Unit #137C	<b>API #:</b> 30 - 039 -
---------------------------------------	--------------------------

<b>Pit Type:</b> Drilling        Workover        X Completion	<b>Inspection:</b> Daily (Rig)        Weekly (Tech)
---------------------------------------------------------------	-----------------------------------------------------

Pit Liner intact (no visible tears)	X Yes    No    If No, Report to EH&S immediately	Date Reported:	Time
Pit Properly Fenced (no fence on rig side if on site)	X Yes    No    Not Required (if site fully fenced)		
Pit Slopes intact	X Yes    No		
Adequate freeboard (liquid level 2 <u>vertical</u> feet from berm top)	X Yes    No    Not Applicable		
Free oil or sheen present on pit	Yes    X No		
Flare Pit free of liquids	X Yes    No    Not Applicable		
Comments:			
Inspector Signature:			
Printed Name: Weldon Higgins			
Title: rig consultant			
Date: 11/19/09		Phone: 505-320-4871	

Record Retention: Submit with Closure  
File: EH&S Well Files

Exploration & Production  
San Juan Basin Operations  
720 So. Main / PO Box 640  
Aztec, NM 87410  
505-634-4200 / 505-634-4205 fax



## Temporary Pit Inspection

### FACILITY INFORMATION

<b>Facility Name:</b> Rosa Unit #137C	<b>API #:</b> 30 – 039 –
---------------------------------------	--------------------------

<b>Pit Type:</b> Drilling        Workover        X Completion	<b>Inspection:</b> Daily (Rig)        Weekly (Tech)
---------------------------------------------------------------	-----------------------------------------------------

Pit Liner intact (no visible tears)	X Yes    No    If No, Report to EH&S immediately	Date Reported:	Time
Pit Properly Fenced (no fence on rig side if on site)	X Yes    No    Not Required (if site fully fenced)		
Pit Slopes intact	X Yes    No		
Adequate freeboard (liquid level 2 vertical feet from berm top)	X Yes    No    Not Applicable		
Free oil or sheen present on pit	Yes    X No		
Flare Pit free of liquids	X Yes    No    Not Applicable		

Comments:

Inspector Signature:

Printed Name: Weldon Higgins

Title: rig consultant

Date: 11/14/09

Phone: 505-320-4871

Record Retention: Submit with Closure  
File: EH&S Well Files

Exploration & Production  
San Juan Basin Operations  
720 So. Main / PO Box 640  
Aztec, NM 87410  
505-634-4200 / 505-634-4205 fax



## Temporary Pit Inspection

### FACILITY INFORMATION

<b>Facility Name:</b> Rosa Unit #137C	<b>API #:</b> 30 – 039 –
---------------------------------------	--------------------------

<b>Pit Type:</b> Drilling        Workover        X Completion	<b>Inspection:</b> Daily (Rig)        Weekly (Tech)
---------------------------------------------------------------	-----------------------------------------------------

Pit Liner intact (no visible tears)	X Yes    No    If No, Report to EH&S immediately	Date Reported:	Time
Pit Properly Fenced (no fence on rig side if on site)	X Yes    No    Not Required (if site fully fenced)		
Pit Slopes intact	X Yes    No		
Adequate freeboard (liquid level 2 <u>vertical</u> feet from berm top)	X Yes    No    Not Applicable		
Free oil or sheen present on pit	Yes    X No		
Flare Pit free of liquids	X Yes    No    Not Applicable		

Comments:	
Inspector Signature:	
Printed Name: Weldon Higgins	
Title: rig consultant	
Date: 11/19/09	Phone: 505-320-4871

Record Retention: Submit with Closure  
File: EH&S Well Files

Exploration & Production  
San Juan Basin Operations  
720 So. Main / PO Box 640  
Aztec, NM 87410  
505-634-4200 / 505-634-4205 fax



## Temporary Pit Inspection

### FACILITY INFORMATION

<b>Facility Name:</b> Rosa Unit #137C	<b>API #:</b> 30 - 039 -
---------------------------------------	--------------------------

<b>Pit Type:</b>	Drilling	Workover	X Completion	<b>Inspection:</b>	Daily (Rig)	Weekly (Tech)
------------------	----------	----------	--------------	--------------------	-------------	---------------

Pit Liner intact (no visible tears)	X Yes   No   If No, Report to EH&S immediately	Date Reported:	Time
Pit Properly Fenced (no fence on rig side if on site)	X Yes   No   Not Required (if site fully fenced)		
Pit Slopes intact	X Yes   No		
Adequate freeboard (liquid level 2 vertical feet from berm top)	X Yes   No   Not Applicable		
Free oil or sheen present on pit	Yes   X No		
Flare Pit free of liquids	X Yes   No   Not Applicable		
Comments:			
Inspector Signature:			
Printed Name: Weldon Higgins			
Title: rig consultant			
Date: 11/21/09		Phone: 505-320-4871	

Record Retention: Submit with Closure  
File: EH&S Well Files



Exploration & Production  
San Juan Basin Operations  
720 So. Main / PO Box 640  
Aztec, NM 87410  
505-634-4200 / 505-634-4205 fax



## Temporary Pit Inspection

### FACILITY INFORMATION

<b>Facility Name:</b> Rosa Unit #137C	<b>API #:</b> 30 – 039 –
---------------------------------------	--------------------------

<b>Pit Type:</b> Drilling        Workover        X Completion	<b>Inspection:</b> Daily (Rig)        Weekly (Tech)
---------------------------------------------------------------	-----------------------------------------------------

Pit Liner intact (no visible tears)	X Yes    No    If No, Report to EH&S immediately	Date Reported:	Time
Pit Properly Fenced (no fence on rig side if on site)	X Yes    No    Not Required (if site fully fenced)		
Pit Slopes intact	X Yes    No		
Adequate freeboard (liquid level 2 <u>vertical</u> feet from berm top)	X Yes    No    Not Applicable		
Free oil or sheen present on pit	Yes    X No		
Flare Pit free of liquids	X Yes    No    Not Applicable		
Comments:			
Inspector Signature:			
Printed Name: Weldon Higgins			
Title: rig consultant			
Date: 11/23/09		Phone: 505-320-4871	

Record Retention: Submit with Closure  
File: EH&S Well Files

Exploration & Production  
San Juan Basin Operations  
720 So. Main / PO Box 640  
Aztec, NM 87410  
505-634-4200 / 505-634-4205 fax



## Temporary Pit Inspection

### FACILITY INFORMATION

<b>Facility Name:</b> Rosa 137C	<b>API #:</b>
---------------------------------	---------------

<b>Pit Type:</b> <input checked="" type="checkbox"/> Drilling <input type="checkbox"/> Workover <input type="checkbox"/> Cavitation	<b>Inspection:</b> <input type="checkbox"/> Daily (Rig) <input type="checkbox"/> Weekly (Tech)
-------------------------------------------------------------------------------------------------------------------------------------	------------------------------------------------------------------------------------------------

Pit Liner intact (no visible tears)	<input checked="" type="checkbox"/> Yes <input type="checkbox"/> No If No, Report to EH&S immediately	Date / Time Reported to EH&S:
Pit Properly Fenced (no fence on rig side if on site)	<input checked="" type="checkbox"/> Yes <input type="checkbox"/> No <input type="checkbox"/> Not Required (if site fully fenced)	
Pit Slopes intact	<input checked="" type="checkbox"/> Yes <input type="checkbox"/> No	
Adequate freeboard (liquid level 2 <u>vertical</u> feet from berm top)	<input checked="" type="checkbox"/> Yes <input type="checkbox"/> No <input type="checkbox"/> Not Applicable	
Does pit have oil or sheen on it?	<input type="checkbox"/> Yes <input checked="" type="checkbox"/> No	
Flare Pit free of liquids	<input checked="" type="checkbox"/> Yes <input type="checkbox"/> No <input type="checkbox"/> Not Applicable	
Comments: Can not access location due to snow conditions		
Inspector Signature: Jason Smith		
Printed Name: Jason Smith		
Title: Tech		
Date: 01/04/2010-01-29-2010 Phone: (505)330-7257		

Record Retention: Submit with Closure  
File: EH&S Well Files

Exploration & Production  
San Juan Basin Operations  
720 So. Main / PO Box 640  
Aztec, NM 87410  
505-634-4200 / 505-634-4205 fax



## Temporary Pit Inspection

### FACILITY INFORMATION

<b>Facility Name:</b> Rosa 137C	<b>API #:</b>
---------------------------------	---------------

<b>Pit Type:</b> <input checked="" type="checkbox"/> Drilling <input type="checkbox"/> Workover <input type="checkbox"/> Cavitation	<b>Inspection:</b> <input type="checkbox"/> Daily (Rig) <input checked="" type="checkbox"/> Weekly (Tech)
-------------------------------------------------------------------------------------------------------------------------------------	-----------------------------------------------------------------------------------------------------------

Pit Liner intact (no visible tears)	<input checked="" type="checkbox"/> Yes <input type="checkbox"/> No If No, Report to EH&S immediately	Date / Time Reported to EH&S:
Pit Properly Fenced (no fence on rig side if on site)	<input checked="" type="checkbox"/> Yes <input type="checkbox"/> No <input type="checkbox"/> Not Required (if site fully fenced)	
Pit Slopes intact	<input checked="" type="checkbox"/> Yes <input type="checkbox"/> No	
Adequate freeboard (liquid level 2 vertical feet from berm top)	<input checked="" type="checkbox"/> Yes <input type="checkbox"/> No <input type="checkbox"/> Not Applicable	
Does pit have oil or sheen on it?	<input type="checkbox"/> Yes <input checked="" type="checkbox"/> No	
Flare Pit free of liquids	<input checked="" type="checkbox"/> Yes <input type="checkbox"/> No <input type="checkbox"/> Not Applicable	
Comments: Pit is full of snow		
Inspector Signature: Jason Smith		
Printed Name: Jason Smith		
Title: Tech		
Date: 3-15-10		Phone: (505)330-7257

Record Retention. Submit with Closure  
File EH&S Well Files

Exploration & Production  
San Juan Basin Operations  
720 So. Main / PO Box 640  
Aztec, NM 87410  
505-634-4200 / 505-634-4205 fax



## Temporary Pit Inspection

### FACILITY INFORMATION

<b>Facility Name:</b> Rosa 137C	<b>API #:</b>
---------------------------------	---------------

<b>Pit Type:</b> x <input type="checkbox"/> Drilling <input type="checkbox"/> Workover <input type="checkbox"/> Cavitation	<b>Inspection:</b> <input type="checkbox"/> Daily (Rig) x <input type="checkbox"/> Weekly (Tech)
----------------------------------------------------------------------------------------------------------------------------	--------------------------------------------------------------------------------------------------

Pit Liner intact (no visible tears)	x <input type="checkbox"/> Yes <input type="checkbox"/> No If No, Report to EH&S immediately	Date / Time Reported to EH&S:
Pit Properly Fenced (no fence on rig side if on site)	x <input type="checkbox"/> Yes <input type="checkbox"/> No <input type="checkbox"/> Not Required (if site fully fenced)	
Pit Slopes intact	x <input type="checkbox"/> Yes <input type="checkbox"/> No	
Adequate freeboard (liquid level 2 vertical feet from berm top)	x <input type="checkbox"/> Yes <input type="checkbox"/> No <input type="checkbox"/> Not Applicable	
Does pit have oil or sheen on it?	<input type="checkbox"/> Yes x <input type="checkbox"/> No	
Flare Pit free of liquids	x <input type="checkbox"/> Yes <input type="checkbox"/> No <input type="checkbox"/> Not Applicable	
Comments: Pit is full of snow		
Inspector Signature: Jason Smith		
Printed Name: Jason Smith		
Title: Tech		
Date: 3-15-10		Phone: (505)330-7257

Record Retention: Submit with Closure  
File: EH&S Well Files

Exploration & Production  
San Juan Basin Operations  
720 So. Main / PO Box 640  
Aztec, NM 87410  
505-634-4200 / 505-634-4205 fax



## Temporary Pit Inspection

### FACILITY INFORMATION

<b>Facility Name:</b> Rosa 137C	<b>API #:</b>
---------------------------------	---------------

<b>Pit Type:</b> x <input type="checkbox"/> Drilling <input type="checkbox"/> Workover <input type="checkbox"/> Cavitation	<b>Inspection:</b> <input type="checkbox"/> Daily (Rig) x <input type="checkbox"/> Weekly (Tech)
----------------------------------------------------------------------------------------------------------------------------	--------------------------------------------------------------------------------------------------

Pit Liner intact (no visible tears)	x <input type="checkbox"/> Yes <input type="checkbox"/> No If No, Report to EH&S immediately	Date / Time Reported to EH&S:
Pit Properly Fenced (no fence on rig side if on site)	x <input type="checkbox"/> Yes <input type="checkbox"/> No <input type="checkbox"/> Not Required (if site fully fenced)	
Pit Slopes intact	x <input type="checkbox"/> Yes <input type="checkbox"/> No	
Adequate freeboard (liquid level 2 <u>vertical</u> feet from berm top)	x <input type="checkbox"/> Yes <input type="checkbox"/> No <input type="checkbox"/> Not Applicable	
Does pit have oil or sheen on it?	<input type="checkbox"/> Yes x <input type="checkbox"/> No	
Flare Pit free of liquids	x <input type="checkbox"/> Yes <input type="checkbox"/> No <input type="checkbox"/> Not Applicable	
Comments: Pit has water in it from snow		
Inspector Signature: Jason Smith		
Printed Name: Jason Smith		
Title: Tech		
Date: 3-22-10 Phone: (505)330-7257		

Record Retention: Submit with Closure  
File: EH&S Well Files

Exploration & Production  
San Juan Basin Operations  
720 So. Main / PO Box 640  
Aztec, NM 87410  
505-634-4200 / 505-634-4205 fax



## Temporary Pit Inspection

### FACILITY INFORMATION

<b>Facility Name:</b> Rosa 137C	<b>API #:</b>
---------------------------------	---------------

<b>Pit Type:</b> x <input type="checkbox"/> Drilling <input type="checkbox"/> Workover <input type="checkbox"/> Cavitation	<b>Inspection:</b> <input type="checkbox"/> Daily (Rig) x <input type="checkbox"/> Weekly (Tech)
-------------------------------------------------------------------------------------------------------------------------------	--------------------------------------------------------------------------------------------------

Pit Liner intact (no visible tears)	x <input type="checkbox"/> Yes <input type="checkbox"/> No If No, Report to EH&S immediately	Date / Time Reported to EH&S:
Pit Properly Fenced (no fence on rig side if on site)	x <input type="checkbox"/> Yes <input type="checkbox"/> No <input type="checkbox"/> Not Required (if site fully fenced)	
Pit Slopes intact	x <input type="checkbox"/> Yes <input type="checkbox"/> No	
Adequate freeboard (liquid level 2 vertical feet from berm top)	x <input type="checkbox"/> Yes <input type="checkbox"/> No <input type="checkbox"/> Not Applicable	
Does pit have oil or sheen on it?	<input type="checkbox"/> Yes x <input type="checkbox"/> No	
Flare Pit free of liquids	x <input type="checkbox"/> Yes <input type="checkbox"/> No <input type="checkbox"/> Not Applicable	
Comments: Pit has water in it from snow		
Inspector Signature: Jason Smith		
Printed Name: Jason Smith		
Title: Tech		
Date: 3-31-10 Phone: (505)330-7257		

Record Retention: Submit with Closure  
File: EH&S Well Files

Exploration & Production  
San Juan Basin Operations  
720 So. Main / PO Box 640  
Aztec, NM 87410  
505-634-4200 / 505-634-4205 fax



## Temporary Pit Inspection

### FACILITY INFORMATION

<b>Facility Name:</b> Rosa 137C	<b>API #:</b>
---------------------------------	---------------

<b>Pit Type:</b> <input checked="" type="checkbox"/> Drilling <input type="checkbox"/> Workover <input type="checkbox"/> Cavitation	<b>Inspection:</b> <input type="checkbox"/> Daily (Rig) <input checked="" type="checkbox"/> Weekly (Tech)
-------------------------------------------------------------------------------------------------------------------------------------	-----------------------------------------------------------------------------------------------------------

Pit Liner intact (no visible tears)	<input checked="" type="checkbox"/> Yes <input type="checkbox"/> No If No, Report to EH&S immediately	Date / Time Reported to EH&S:
Pit Properly Fenced (no fence on rig side if on site)	<input checked="" type="checkbox"/> Yes <input type="checkbox"/> No <input type="checkbox"/> Not Required (if site fully fenced)	
Pit Slopes intact	<input checked="" type="checkbox"/> Yes <input type="checkbox"/> No	
Adequate freeboard (liquid level 2 <u>vertical</u> feet from berm top)	<input checked="" type="checkbox"/> Yes <input type="checkbox"/> No <input type="checkbox"/> Not Applicable	
Does pit have oil or sheen on it?	<input type="checkbox"/> Yes <input checked="" type="checkbox"/> No	
Flare Pit free of liquids	<input checked="" type="checkbox"/> Yes <input type="checkbox"/> No <input type="checkbox"/> Not Applicable	

<b>Comments:</b> Pit has water in it from snow		
Inspector Signature: Jason Smith		
Printed Name: Jason Smith		
Title: Tech		
Date: 4-05-10		Phone: (505)330-7257

Record Retention: Submit with Closure  
File. EH&S Well Files

Exploration & Production  
San Juan Basin Operations  
720 So. Main / PO Box 640  
Aztec, NM 87410  
505-634-4200 / 505-634-4205 fax



## Temporary Pit Inspection

### FACILITY INFORMATION

<b>Facility Name:</b> Rosa 137C	<b>API #:</b>
---------------------------------	---------------

<b>Pit Type:</b> x <input type="checkbox"/> Drilling <input type="checkbox"/> Workover <input type="checkbox"/> Cavitation	<b>Inspection:</b> <input type="checkbox"/> Daily (Rig) x <input type="checkbox"/> Weekly (Tech)
----------------------------------------------------------------------------------------------------------------------------	--------------------------------------------------------------------------------------------------

Pit Liner intact (no visible tears)	x <input type="checkbox"/> Yes <input type="checkbox"/> No If No, Report to EH&S immediately	Date / Time Reported to EH&S:
Pit Properly Fenced (no fence on rig side if on site)	x <input type="checkbox"/> Yes <input type="checkbox"/> No <input type="checkbox"/> Not Required (if site fully fenced)	
Pit Slopes intact	x <input type="checkbox"/> Yes <input type="checkbox"/> No	
Adequate freeboard (liquid level 2 <u>vertical</u> feet from berm top)	x <input type="checkbox"/> Yes <input type="checkbox"/> No <input type="checkbox"/> Not Applicable	
Does pit have oil or sheen on it?	<input type="checkbox"/> Yes x <input type="checkbox"/> No	
Flare Pit free of liquids	x <input type="checkbox"/> Yes <input type="checkbox"/> No <input type="checkbox"/> Not Applicable	
Comments: Pit has water in it from snow		
Inspector Signature: Jason Smith		
Printed Name: Jason Smith		
Title: Tech		
Date: 4-15-10 Phone: (505)330-7257		

Record Retention: Submit with Closure  
File: EH&S Well Files

Exploration & Production  
San Juan Basin Operations  
720 So. Main / PO Box 640  
Aztec, NM 87410  
505-634-4200 / 505-634-4205 fax



## Temporary Pit Inspection

### FACILITY INFORMATION

<b>Facility Name:</b> Rosa 137C	<b>API #:</b>
---------------------------------	---------------

<b>Pit Type:</b> x <input type="checkbox"/> Drilling <input type="checkbox"/> Workover <input type="checkbox"/> Cavitation	<b>Inspection:</b> <input type="checkbox"/> Daily (Rig) x <input type="checkbox"/> Weekly (Tech)
----------------------------------------------------------------------------------------------------------------------------	--------------------------------------------------------------------------------------------------

Pit Liner intact (no visible tears)	x <input type="checkbox"/> Yes <input type="checkbox"/> No If No, Report to EH&S immediately	Date / Time Reported to EH&S:
Pit Properly Fenced (no fence on rig side if on site)	x <input type="checkbox"/> Yes <input type="checkbox"/> No <input type="checkbox"/> Not Required (if site fully fenced)	
Pit Slopes intact	x <input type="checkbox"/> Yes <input type="checkbox"/> No	
Adequate freeboard (liquid level 2 <u>vertical</u> feet from berm top)	x <input type="checkbox"/> Yes <input type="checkbox"/> No <input type="checkbox"/> Not Applicable	
Does pit have oil or sheen on it?	<input type="checkbox"/> Yes x <input type="checkbox"/> No	
Flare Pit free of liquids	x <input type="checkbox"/> Yes <input type="checkbox"/> No <input type="checkbox"/> Not Applicable	
Comments: Pit has water in it from snow		
Inspector Signature: Jason Smith		
Printed Name: Jason Smith		
Title: Tech		
Date: 4-28-10 Phone: (505)330-7257		

Record Retention: Submit with Closure  
File: EH&S Well Files

Exploration & Production  
San Juan Basin Operations  
720 So. Main / PO Box 640  
Aztec, NM 87410  
505-634-4200 / 505-634-4205 fax



## Temporary Pit Inspection

### FACILITY INFORMATION

<b>Facility Name:</b> Rosa 137C	<b>API #:</b>
---------------------------------	---------------

<b>Pit Type:</b> <input checked="" type="checkbox"/> Drilling <input type="checkbox"/> Workover <input type="checkbox"/> Cavitation	<b>Inspection:</b> <input type="checkbox"/> Daily (Rig) <input checked="" type="checkbox"/> Weekly (Tech)
----------------------------------------------------------------------------------------------------------------------------------------	-----------------------------------------------------------------------------------------------------------

Pit Liner intact (no visible tears)	<input checked="" type="checkbox"/> Yes <input type="checkbox"/> No If No, Report to EH&S immediately	Date / Time Reported to EH&S:
Pit Properly Fenced (no fence on rig side if on site)	<input checked="" type="checkbox"/> Yes <input type="checkbox"/> No <input type="checkbox"/> Not Required (if site fully fenced)	
Pit Slopes intact	<input checked="" type="checkbox"/> Yes <input type="checkbox"/> No	
Adequate freeboard (liquid level 2 <u>vertical</u> feet from berm top)	<input checked="" type="checkbox"/> Yes <input type="checkbox"/> No <input type="checkbox"/> Not Applicable	
Does pit have oil or sheen on it?	<input type="checkbox"/> Yes <input checked="" type="checkbox"/> No	
Flare Pit free of liquids	<input checked="" type="checkbox"/> Yes <input type="checkbox"/> No <input type="checkbox"/> Not Applicable	
Comments: Pit has water in it from snow		
Inspector Signature: Jason Smith		
Printed Name: Jason Smith		
Title: Tech		
Date: 4-20-10		Phone: (505)330-7257

Record Retention: Submit with Closure  
File: EH&S Well Files

Exploration & Production  
San Juan Basin Operations  
720 So. Main / PO Box 640  
Aztec, NM 87410  
505-634-4200 / 505-634-4205 fax



## Temporary Pit Inspection

### FACILITY INFORMATION

<b>Facility Name:</b> Rosa 137C	<b>API #:</b>
---------------------------------	---------------

<b>Pit Type:</b> <input checked="" type="checkbox"/> Drilling <input type="checkbox"/> Workover <input type="checkbox"/> Cavitation	<b>Inspection:</b> <input type="checkbox"/> Daily (Rig) <input type="checkbox"/> Weekly (Tech)
-------------------------------------------------------------------------------------------------------------------------------------	------------------------------------------------------------------------------------------------

Pit Liner intact (no visible tears)	<input checked="" type="checkbox"/> Yes <input type="checkbox"/> No If No, Report to EH&S immediately	Date / Time Reported to EH&S:
Pit Properly Fenced (no fence on rig side if on site)	<input checked="" type="checkbox"/> Yes <input type="checkbox"/> No <input type="checkbox"/> Not Required (if site fully fenced)	
Pit Slopes intact	<input checked="" type="checkbox"/> Yes <input type="checkbox"/> No	
Adequate freeboard (liquid level 2 <u>vertical</u> feet from berm top)	<input checked="" type="checkbox"/> Yes <input type="checkbox"/> No <input type="checkbox"/> Not Applicable	
Does pit have oil or sheen on it?	<input type="checkbox"/> Yes <input checked="" type="checkbox"/> No	
Flare Pit free of liquids	<input checked="" type="checkbox"/> Yes <input type="checkbox"/> No <input type="checkbox"/> Not Applicable	

<b>Comments:</b> Water pulled out of pit small amount of rain water exist		
Inspector Signature: Jason Smith		
Printed Name: Jason Smith		
Title: Tech		
Date: 11-23-09		Phone: (505)330-7257

Record Retention: Submit with Closure  
File: EH&S Well Files

Exploration & Production  
San Juan Basin Operations  
720 So. Main / PO Box 640  
Aztec, NM 87410  
505-634-4200 / 505-634-4205 fax



## Temporary Pit Inspection

### FACILITY INFORMATION

<b>Facility Name:</b> Rosa 137C	<b>API #:</b>
---------------------------------	---------------

<b>Pit Type:</b> <input checked="" type="checkbox"/> Drilling <input type="checkbox"/> Workover <input type="checkbox"/> Cavitation	<b>Inspection:</b> <input type="checkbox"/> Daily (Rig) <input type="checkbox"/> Weekly (Tech)
----------------------------------------------------------------------------------------------------------------------------------------	------------------------------------------------------------------------------------------------

Pit Liner intact (no visible tears)	<input checked="" type="checkbox"/> Yes <input type="checkbox"/> No If No, Report to EH&S immediately	Date / Time Reported to EH&S:
Pit Properly Fenced (no fence on rig side if on site)	<input checked="" type="checkbox"/> Yes <input type="checkbox"/> No <input type="checkbox"/> Not Required (if site fully fenced)	
Pit Slopes intact	<input checked="" type="checkbox"/> Yes <input type="checkbox"/> No	
Adequate freeboard (liquid level 2 vertical feet from berm top)	<input checked="" type="checkbox"/> Yes <input type="checkbox"/> No <input type="checkbox"/> Not Applicable	
Does pit have oil or sheen on it?	<input type="checkbox"/> Yes <input checked="" type="checkbox"/> No	
Flare Pit free of liquids	<input checked="" type="checkbox"/> Yes <input type="checkbox"/> No <input type="checkbox"/> Not Applicable	
Comments: Water pulled out of pit small amount of rain water exist		
Inspector Signature: Jason Smith		
Printed Name: Jason Smith		
Title: Tech		
Date: 11-30-09		Phone: (505)330-7257

Record Retention. Submit with Closure  
File: EH&S Well Files

Exploration & Production  
San Juan Basin Operations  
720 So. Main / PO Box 640  
Aztec, NM 87410  
505-634-4200 / 505-634-4205 fax



## Temporary Pit Inspection

### FACILITY INFORMATION

<b>Facility Name:</b> Rosa 137C	<b>API #:</b>
---------------------------------	---------------

<b>Pit Type:</b> <input checked="" type="checkbox"/> Drilling <input type="checkbox"/> Workover <input type="checkbox"/> Cavitation	<b>Inspection:</b> <input type="checkbox"/> Daily (Rig) <input type="checkbox"/> Weekly (Tech)
----------------------------------------------------------------------------------------------------------------------------------------	------------------------------------------------------------------------------------------------

Pit Liner intact (no visible tears)	<input checked="" type="checkbox"/> Yes <input type="checkbox"/> No If No, Report to EH&S immediately	Date / Time Reported to EH&S:
Pit Properly Fenced (no fence on rig side if on site)	<input checked="" type="checkbox"/> Yes <input type="checkbox"/> No <input type="checkbox"/> Not Required (if site fully fenced)	
Pit Slopes intact	<input checked="" type="checkbox"/> Yes <input type="checkbox"/> No	
Adequate freeboard (liquid level 2 vertical feet from berm top)	<input checked="" type="checkbox"/> Yes <input type="checkbox"/> No <input type="checkbox"/> Not Applicable	
Does pit have oil or sheen on it?	<input type="checkbox"/> Yes <input checked="" type="checkbox"/> No	
Flare Pit free of liquids	<input checked="" type="checkbox"/> Yes <input type="checkbox"/> No <input type="checkbox"/> Not Applicable	
Comments: Water pulled out of pit small amount of rain water and about 10" of snow exist		
Inspector Signature: Jason Smith		
Printed Name: Jason Smith		
Title: Tech		
Date: 12-10-09 Phone: (505)330-7257		

Record Retention Submit with Closure  
File EH&S Well Files

Exploration & Production  
San Juan Basin Operations  
720 So. Main / PO Box 640  
Aztec, NM 87410  
505-634-4200 / 505-634-4205 fax



## Temporary Pit Inspection

### FACILITY INFORMATION

<b>Facility Name:</b> Rosa 137C	<b>API #:</b>
---------------------------------	---------------

<b>Pit Type:</b> <input checked="" type="checkbox"/> Drilling <input type="checkbox"/> Workover <input type="checkbox"/> Cavitation	<b>Inspection:</b> <input type="checkbox"/> Daily (Rig) <input type="checkbox"/> Weekly (Tech)
-------------------------------------------------------------------------------------------------------------------------------------	------------------------------------------------------------------------------------------------

Pit Liner intact (no visible tears)	<input checked="" type="checkbox"/> Yes <input type="checkbox"/> No If No, Report to EH&S immediately	Date / Time Reported to EH&S:
Pit Properly Fenced (no fence on rig side if on site)	<input checked="" type="checkbox"/> Yes <input type="checkbox"/> No <input type="checkbox"/> Not Required (if site fully fenced)	
Pit Slopes intact	<input checked="" type="checkbox"/> Yes <input type="checkbox"/> No	
Adequate freeboard (liquid level 2 <u>vertical</u> feet from berm top)	<input checked="" type="checkbox"/> Yes <input type="checkbox"/> No <input type="checkbox"/> Not Applicable	
Does pit have oil or sheen on it?	<input type="checkbox"/> Yes <input checked="" type="checkbox"/> No	
Flare Pit free of liquids	<input checked="" type="checkbox"/> Yes <input type="checkbox"/> No <input type="checkbox"/> Not Applicable	
Comments: Water pulled out of pit small amount of rain water and snow exist		
Inspector Signature: Jason Smith		
Printed Name: Jason Smith		
Title: Tech		
Date: 12-17-09 Phone: (505)330-7257		

Record Retention: Submit with Closure  
File: EH&S Well Files

Exploration & Production  
San Juan Basin Operations  
720 So. Main / PO Box 640  
Aztec, NM 87410  
505-634-4200 / 505-634-4205 fax



## Temporary Pit Inspection

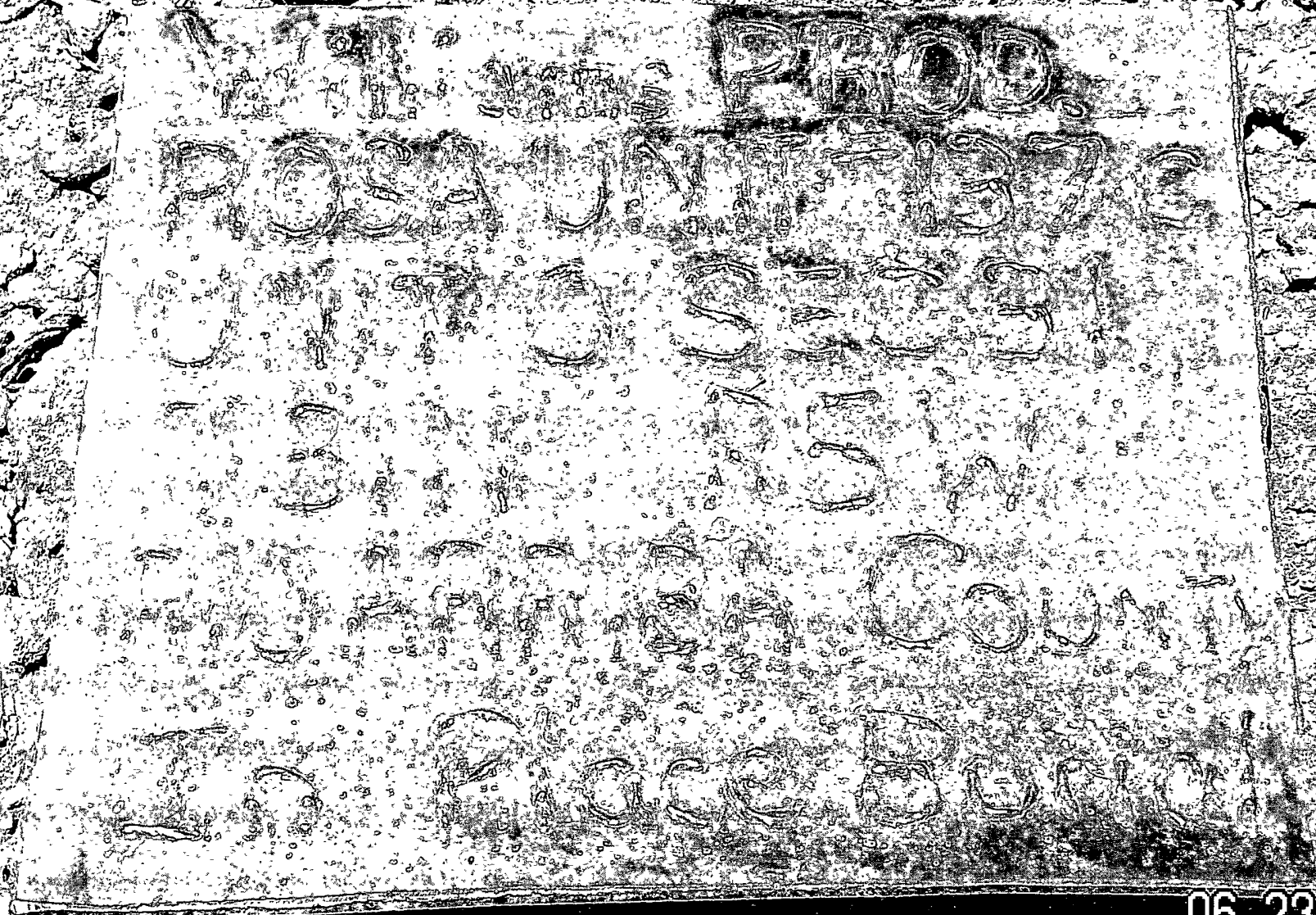
### FACILITY INFORMATION

<b>Facility Name:</b> Rosa 137C	<b>API #:</b>
---------------------------------	---------------

<b>Pit Type:</b> <input checked="" type="checkbox"/> Drilling <input type="checkbox"/> Workover <input type="checkbox"/> Cavitation	<b>Inspection:</b> <input type="checkbox"/> Daily (Rig) <input type="checkbox"/> Weekly (Tech)
----------------------------------------------------------------------------------------------------------------------------------------	------------------------------------------------------------------------------------------------

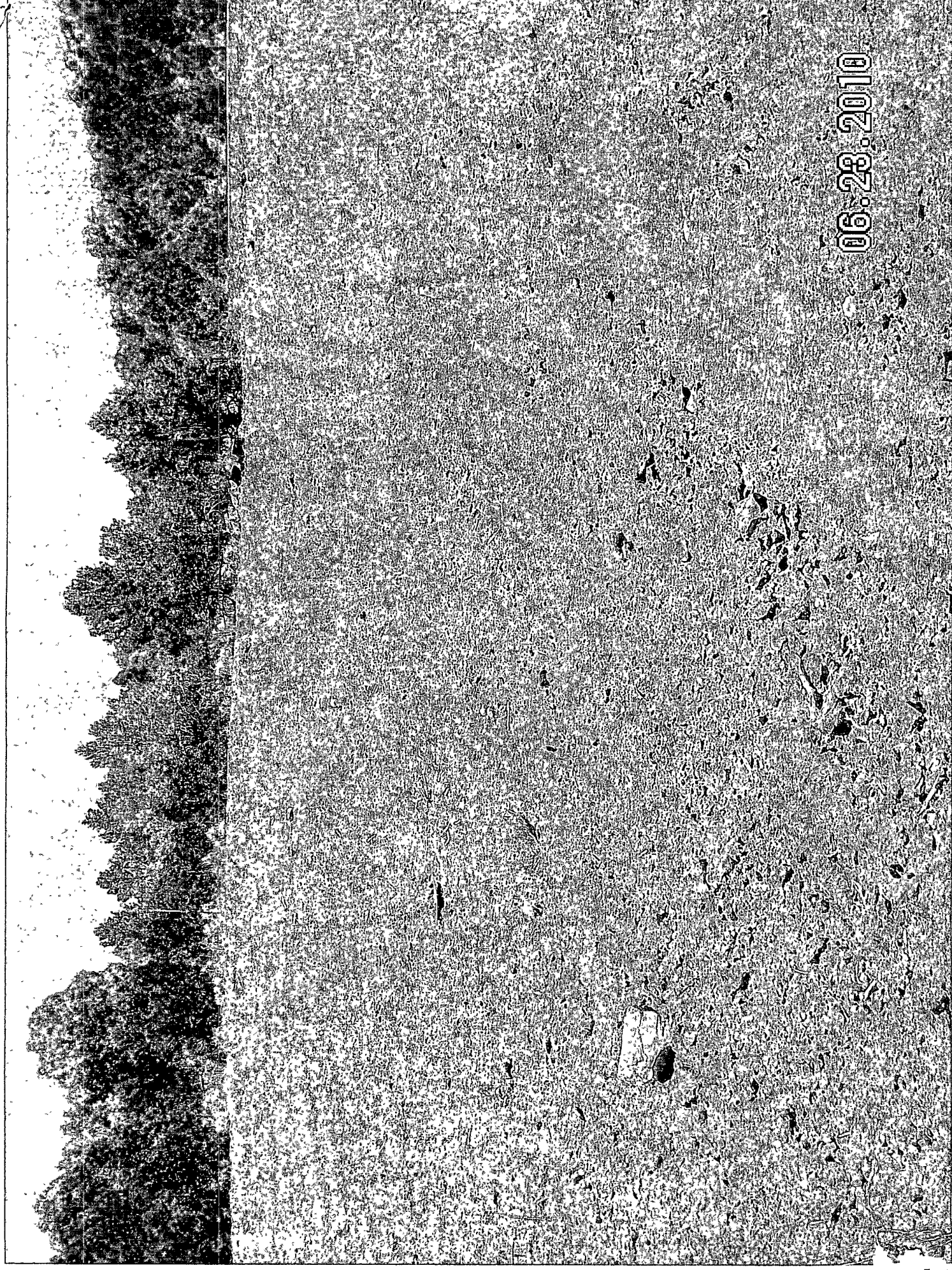
Pit Liner intact (no visible tears)	<input checked="" type="checkbox"/> Yes <input type="checkbox"/> No If No, Report to EH&S immediately	Date / Time Reported to EH&S:
Pit Properly Fenced (no fence on rig side if on site)	<input checked="" type="checkbox"/> Yes <input type="checkbox"/> No <input type="checkbox"/> Not Required (if site fully fenced)	
Pit Slopes intact	<input checked="" type="checkbox"/> Yes <input type="checkbox"/> No	
Adequate freeboard (liquid level 2 <u>vertical</u> feet from berm top)	<input checked="" type="checkbox"/> Yes <input type="checkbox"/> No <input type="checkbox"/> Not Applicable	
Does pit have oil or sheen on it?	<input type="checkbox"/> Yes <input checked="" type="checkbox"/> No	
Flare Pit free of liquids	<input checked="" type="checkbox"/> Yes <input type="checkbox"/> No <input type="checkbox"/> Not Applicable	
Comments: Water pulled out of pit small amount of rain water and snow exist		
Inspector Signature: Jason Smith		
Printed Name: Jason Smith		
Title: Tech		
Date: 12-29-09		Phone: (505)330-7257

Record Retention: Submit with Closure  
File: EH&S Well Files



06.23.2010

137C



06:28:2010

0000 137C



Exploration & Production  
PO Box 640  
Aztec, NM 87410  
505/634-4219  
505/634-4205 fax



## Transmittal

**To:** Brandon Powell  
NMOCD  
1000 Rio Brazos Road  
Aztec, New Mexico 87410

**From:** Tasha Meador  
San Juan- Permitting Technician  
505-634-4241  
tasha.meador@williams.com

**Date:**

**Re:** Supplemental Submittal

Temporary Pit Closure report: NMOCD Permit # 6853

Enclosed and per your direction, please find our supplemental submittal for the referenced temporary pit closure report.

Please advise if additional information is required. Thank you for your time and consideration. Please call or contact me if there are any questions.

Respectfully resubmitted,

Tasha Meador  
Williams Exploration & Production  
721 S Main Aztec, NM  
Office: 505-634-4200  
Direct: 505-634-4241  
Fax: 505-634-4205  
[tasha.meador@williams.com](mailto:tasha.meador@williams.com)

Encl:

District I  
1625' N French Dr., Hobbs, NM 88240

District II  
1301 W. Grand Avenue, Artesia, NM 88210

District III  
1000 Rio Brazos Rd., Aztec, NM 87410

District IV  
1220 S St Francis Dr., Santa Fe, NM 87505

State of New Mexico  
Energy, Minerals & Natural Resources Department

OIL CONSERVATION DIVISION  
1220 South St. Francis Dr.  
Santa Fe, NM 87505

Form C-102  
Revised October 12, 2005

Instructions on back  
Submit to Appropriate District Office  
State Lease - 4 Copies  
Fee Lease - 3 Copies

☐ AMENDED REPORT

WELL LOCATION AND ACREAGE DEDICATION PLAT

API Number 1112312009 30-039-30691	*Pool Code 97232 / 72319 / 71599	*Pool Name BASIN MANCOS / BLANCO MESAVERDE / BASIN DAKOTA
*Property Code 17033	*Property Name ROSA UNIT	*Well Number 137C
*DGRID No 120782	*Operator Name WILLIAMS PRODUCTION COMPANY	*Elevation 6448'

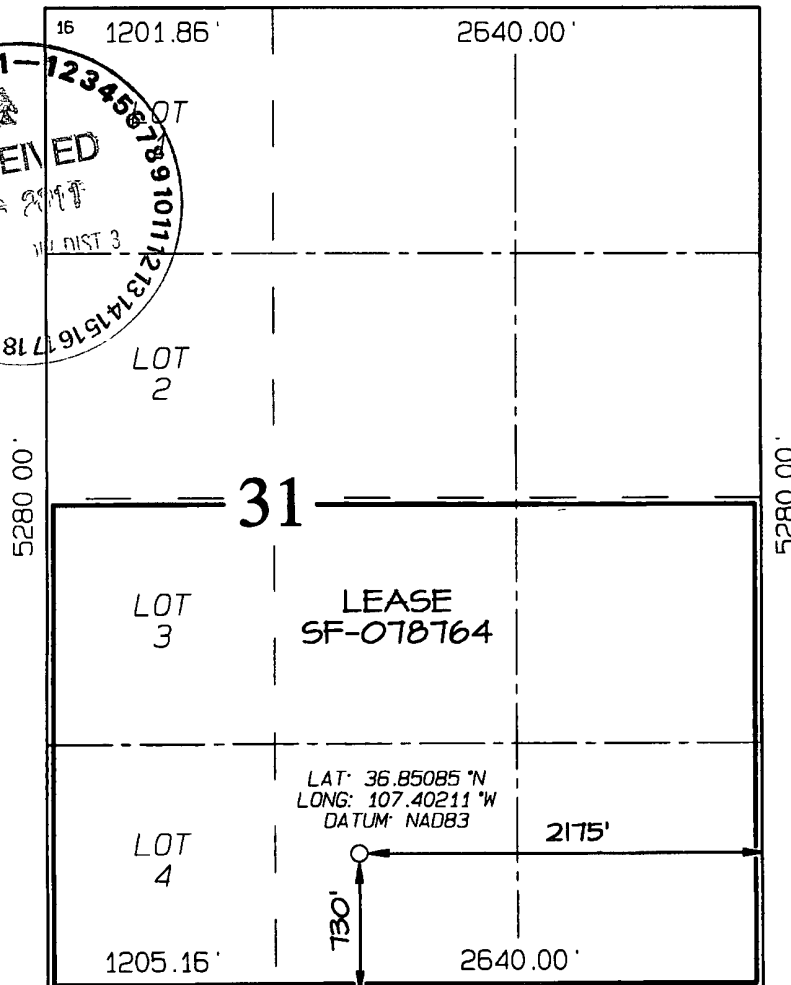
<sup>10</sup> Surface Location

UL or lot no	Section	Township	Range	Lot Idn	Feet from the	North/South line	Feet from the	East/West line	County
0	31	31N	5W		730	SOUTH	2175	EAST	RIO ARriba

<sup>11</sup> Bottom Hole Location If Different From Surface

UL or lot no	Section	Township	Range	Lot Idn	Feet from the	North/South line	Feet from the	East/West line	County
<sup>12</sup> Dedicated Acres 232.99 Acres - (S/2)					<sup>13</sup> Joint or Infill	<sup>14</sup> Consolidation Code	<sup>15</sup> Order No		

NO ALLOWABLE WILL BE ASSIGNED TO THIS COMPLETION UNTIL ALL INTERESTS HAVE BEEN CONSOLIDATED OR A NON-STANDARD UNIT HAS BEEN APPROVED BY THE DIVISION



<sup>17</sup> OPERATOR CERTIFICATION

I hereby certify that the information contained herein is true and complete to the best of my knowledge and belief, and that this organization either owns a working interest or unleased mineral interest in the land including the proposed bottom-hole location or has a right to drill this well at this location pursuant to a contract with an owner of such a mineral or working interest, or to a voluntary pooling agreement or a compulsory pooling order heretofore entered by the division

Tasha Meador 8/13/11  
Signature Date  
Tasha Meador  
Printed Name

<sup>18</sup> SURVEYOR CERTIFICATION

I hereby certify that the well location shown on this plat was plotted from field notes of actual surveys made by me or under my supervision, and that the same is true and correct to the best of my belief

Survey Date: JANUARY 2, 2009

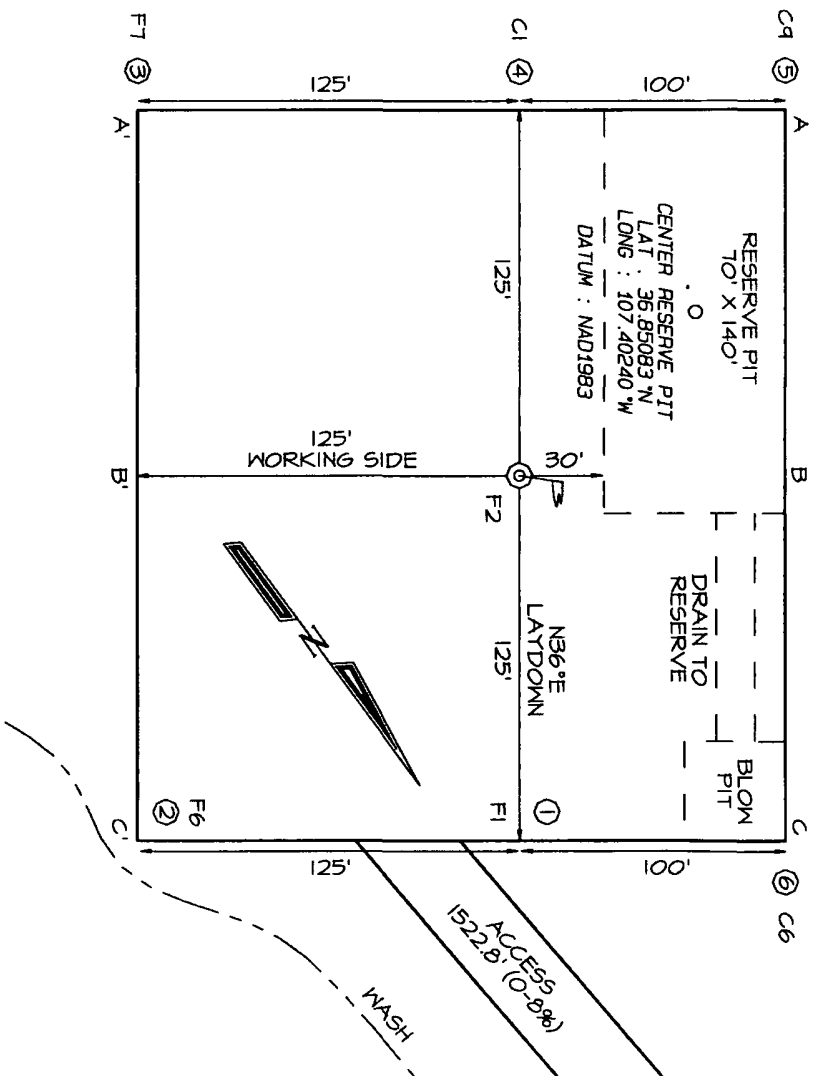
Signature and Seal of Professional Surveyor



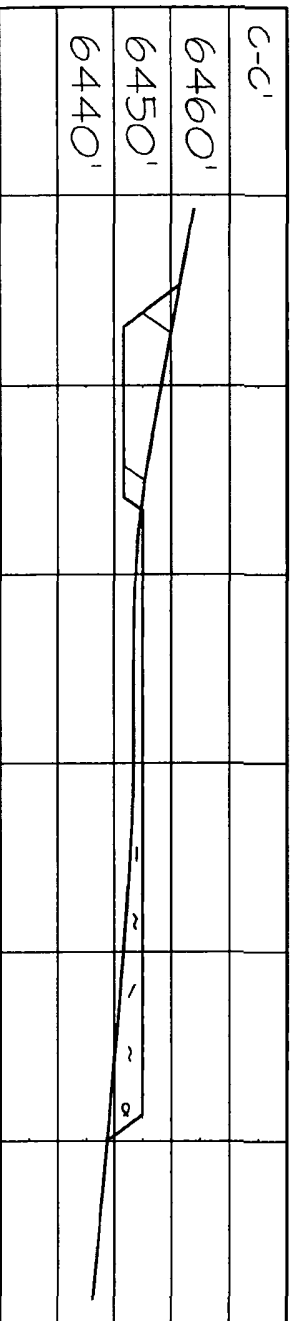
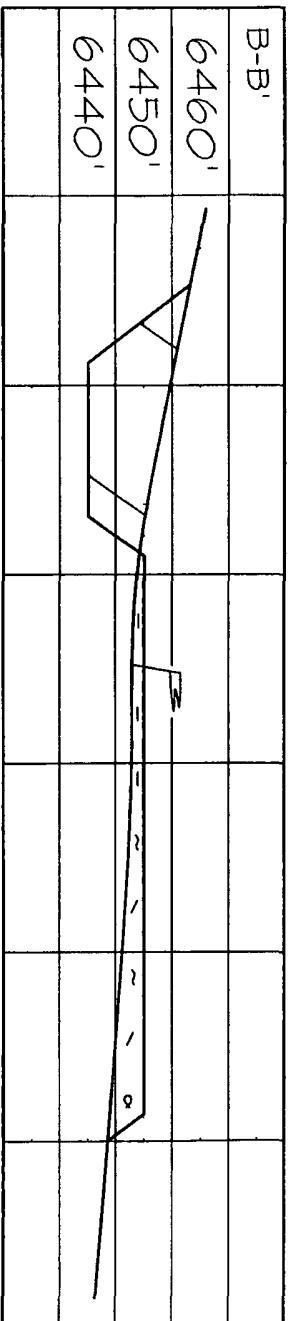
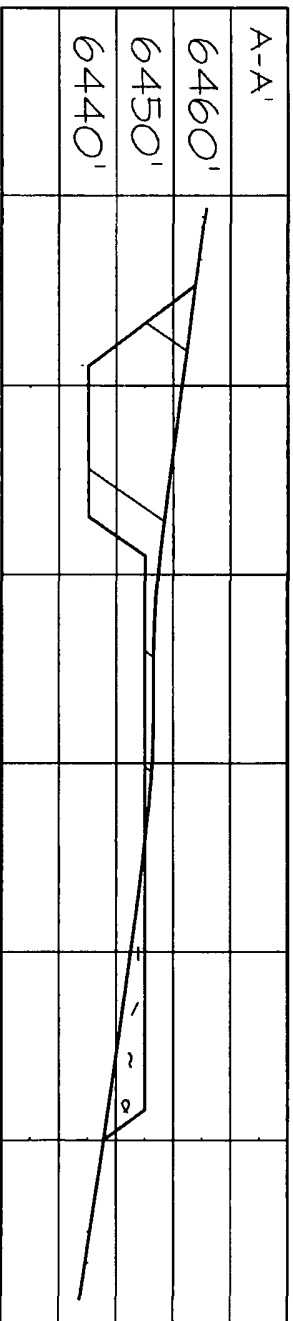
JASON C. EDWARDS  
Certificate Number 15269

**WILLIAMS PRODUCTION COMPANY ROSA UNIT #137C**  
**730' FSL & 2175' FFL, SECTION 31, T31N, R5W, N4PM**  
**RIO ARriba COUNTY, NEW MEXICO ELEVATION: 6448'**

**LATITUDE: 36.85085° N**  
**LONGITUDE: 107.40211° W**  
 DATUM NAD1983



Steel T-Posts have been set to define the Edge of Disturbance limits which are 50' offset from the edge of the staked wellpad.



Submit To Appropriate District Office Two Copies <b>District I</b> 1625 N French Dr Hobbs NM 88240 <b>District II</b> 1301 W Grand Avenue Artesia NM 88210 <b>District III</b> 1000 Rio Brazos Rd Aztec NM 87410 <b>District IV</b> 1220 S St Francis Dr , Santa Fe, NM 87505		<b>State of New Mexico</b> <b>Energy, Minerals and Natural Resources</b>  <b>Oil Conservation Division</b> <b>1220 South St. Francis Dr.</b> <b>Santa Fe, NM 87505</b>			<b>Form C-105</b> July 17, 2008		
		1 WELL API NO 30-039-30691					
		2 Type of Lease <input type="checkbox"/> STATE <input type="checkbox"/> FEE <input checked="" type="checkbox"/> FED/INDIAN					
		3 State Oil & Gas Lease No SF-078764					
<b>WELL COMPLETION OR RECOMPLETION REPORT AND LOG</b>							
4 Reason for filing  <input type="checkbox"/> <b>COMPLETION REPORT</b> (Fill in boxes #1 through #31 for State and Fee wells only)  <input checked="" type="checkbox"/> <b>C-144 CLOSURE ATTACHMENT</b> (Fill in boxes #1 through #9, #15 Date Rig Released and #32 and/or #33, attach this and the plat to the C-144 closure report in accordance with 19 15 17 13 K NMAC)				5 Lease Name or Unit Agreement Name Rosa			
				6 Well Number Rosa Unit #137C			
7 Type of Completion <input checked="" type="checkbox"/> NEW WELL <input type="checkbox"/> WORKOVER <input type="checkbox"/> DEEPENING <input type="checkbox"/> PLUGBACK <input type="checkbox"/> DIFFERENT RESERVOIR <input type="checkbox"/> OTHER							
8 Name of Operator    WILLIAMS PRODUCTION, LLC				9 OGRID    120782			
10 Address of Operator    P O BOX 640    AZTEC, NM 87410				11 Pool name or Wildcat			
12. Location	Unit Ltr	Section	Township	Range	Lot	Feet from the	
Surface:							
BH:							
13 Date Spudded	14 Date T D Reached	15 Date Rig Released 11/23/2009		16 Date Completed (Ready to Produce)		17 Elevations (DF and RKB, RT, GR, etc )	
18 Total Measured Depth of Well		19 Plug Back Measured Depth		20 Was Directional Survey Made?		21 Type Electric and Other Logs Run	
22 Producing Interval(s), of this completion - Top, Bottom, Name							
<b>23 CASING RECORD (Report all strings set in well)</b>							
CASING SIZE	WEIGHT LB /FT	DEPTH SET		HOLE SIZE	CEMENTING RECORD	AMOUNT PULLED	
<b>24 LINER RECORD</b>				<b>25 TUBING RECORD</b>			
SIZE	TOP	BOTTOM	SACKS CEMENT	SCREEN	SIZE	DEPTH SET	
26 Perforation record (interval, size, and number)				27 ACID, SHOT, FRACTURE, CEMENT, SQUEEZE, ETC DEPTH INTERVAL    AMOUNT AND KIND MATERIAL USED			
<b>28 PRODUCTION</b>							
Date First Production		Production Method ( <i>Flowing, gas lift, pumping - Size and type pump</i> )			Well Status ( <i>Prod. or Shut-in</i> )		
Date of Test	Hours Tested	Choke Size	Prod'n For Test Period	Oil - Bbl	Gas - MCF	Water - Bbl	
Flow Tubing Press	Casing Pressure	Calculated 24-Hour Rate	Oil - Bbl	Gas - MCF	Water - Bbl	Oil Gravity - API - ( <i>Corr.</i> )	
29 Disposition of Gas ( <i>Sold, used for fuel, vented, etc.</i> )					30 Test Witnessed By		
31 List Attachments							
32 If a temporary pit was used at the well, attach a plat with the location of the temporary pit							
33 If an on-site burial was used at the well, report the exact location of the on-site burial							
Latitude 36 85085 Longitude 107 40211 NAD 1927 1983							
<i>I hereby certify that the information shown on both sides of this form is true and complete to the best of my knowledge and belief</i>							
Signature <u>Tasha Meador</u>		Printed Name    Title    Permit Technician    Date <u>8/31/11</u>					
E-mail Address. <u>tasha.meador@williams.com</u>							