

District I  
1625 N French Dr , Hobbs, NM 88240  
District II  
1301 W Grand Avenue, Artesia, NM 88210  
District III  
1000 Rio Brazos Road, Aztec, NM 87410  
District IV  
1220 S St Francis Dr , Santa Fe, NM 87505

State of New Mexico  
Energy Minerals and Natural Resources  
Department  
Oil Conservation Division  
1220 South St. Francis Dr.  
Santa Fe, NM 87505

Form C-144  
July 21, 2008

For temporary pits, closed-loop systems, and below-grade tanks, submit to the appropriate NMOCD District Office  
For permanent pits and exceptions submit to the Santa Fe Environmental Bureau office and provide a copy to the appropriate NMOCD District Office

Pit, Closed-Loop System, Below-Grade Tank, or Proposed Alternative Method Permit or Closure Plan Application

6893

- Type of action:  Permit of a pit, closed-loop system, below-grade tank, or proposed alternative method  
 Closure of a pit, closed-loop system, below-grade tank, or proposed alternative method  
 Modification to an existing permit  
 Closure plan only submitted for an existing permitted or non-permitted pit, closed-loop system, below-grade tank, or proposed alternative method

Instructions: Please submit one application (Form C-144) per individual pit, closed-loop system, below-grade tank or alternative request

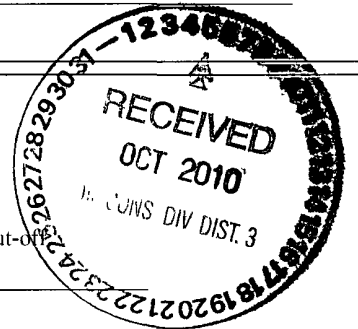
Please be advised that approval of this request does not relieve the operator of liability should operations result in pollution of surface water, ground water or the environment. Nor does approval relieve the operator of its responsibility to comply with any other applicable governmental authority's rules, regulations or ordinances

1  
Operator Williams Operating Co, LLC OGRID # 120782  
Address PO Box 640 / 721 S Main Aztec, NM 87410  
Facility or well name Rosa Unit 169D COM  
API Number 30-03930755 OCD Permit Number \_\_\_\_\_  
U/L or Qtr/Qtr J Section 3 Township 31N Range 6W County Rio Arriba  
Center of Proposed Design Latitude 36 92798N Longitude -107 44682W NAD  1927  1983  
Surface Owner  Federal  State  Private  Tribal Trust or Indian Allotment

2  
 **Pit:** Subsection F or G of 19 15 17 11 NMAC  
Temporary  Drilling  Workover  
 Permanent  Emergency  Cavitation  P&A  
 Lined  Unlined Liner type Thickness 20 mil  LLDPE  HDPE  PVC  Other \_\_\_\_\_  
 String-Reinforced  
Liner Seams  Welded  Factory  Other \_\_\_\_\_ Volume 20,000 bbl Dimensions L 140' x W 70' x D 12'

3  
 **Closed-loop System:** Subsection H of 19 15 17 11 NMAC  
Type of Operation  P&A  Drilling a new well  Workover or Drilling (Applies to activities which require prior approval of a permit or notice of intent)  
 Drying Pad  Above Ground Steel Tanks  Haul-off Bins  Other \_\_\_\_\_  
 Lined  Unlined Liner type. Thickness \_\_\_\_\_ mil  LLDPE  HDPE  PVC  Other \_\_\_\_\_  
Liner Seams  Welded  Factory  Other \_\_\_\_\_

4  
 **Below-grade tank:** Subsection I of 19.15.17.11 NMAC  
Volume: \_\_\_\_\_ bbl Type of fluid. \_\_\_\_\_  
Tank Construction material \_\_\_\_\_  
 Secondary containment with leak detection  Visible sidewalls, liner, 6-inch lift and automatic overflow shut-off  
 Visible sidewalls and liner  Visible sidewalls only  Other \_\_\_\_\_  
Liner type: Thickness \_\_\_\_\_ mil  HDPE  PVC  Other \_\_\_\_\_



5  
 **Alternative Method:** Submittal of an exception request is required Exceptions must be submitted to the Santa Fe Environmental Bureau office for consideration of approval

7

6  
**Fencing:** Subsection D of 19 15 17 11 NMAC (*Applies to permanent pits, temporary pits, and below-grade tanks*)  
 Chain link, six feet in height, two strands of barbed wire at top (*Required if located within 1000 feet of a permanent residence, school, hospital, institution or church*)  
 Four foot height, four strands of barbed wire evenly spaced between one and four feet  
 Alternate Please specify As per BLM/BOR specifications

7  
**Netting:** Subsection E of 19 15 17 11 NMAC (*Applies to permanent pits and permanent open top tanks*)  
 Screen  Netting  Other \_\_\_\_\_  
 Monthly inspections (If netting or screening is not physically feasible)

8.  
**Signs:** Subsection C of 19 15 17 11 NMAC  
 12"x 24", 2" lettering, providing Operator's name, site location, and emergency telephone numbers  
 Signed in compliance with 19 15 3 103 NMAC

9  
**Administrative Approvals and Exceptions:**  
 Justifications and/or demonstrations of equivalency are required Please refer to 19.15.17 NMAC for guidance.  
**Please check a box if one or more of the following is requested, if not leave blank:**  
 Administrative approval(s) Requests must be submitted to the appropriate division district or the Santa Fe Environmental Bureau office for consideration of approval  
 Exception(s) Requests must be submitted to the Santa Fe Environmental Bureau office for consideration of approval

10  
**Siting Criteria (regarding permitting):** 19 15 17 10 NMAC  
*Instructions: The applicant must demonstrate compliance for each siting criteria below in the application. Recommendations of acceptable source material are provided below. Requests regarding changes to certain siting criteria may require administrative approval from the appropriate district office or may be considered an exception which must be submitted to the Santa Fe Environmental Bureau office for consideration of approval. Applicant must attach justification for request. Please refer to 19.15.17.10 NMAC for guidance. Siting criteria does not apply to drying pads or above-grade tanks associated with a closed-loop system.*

Ground water is less than 50 feet below the bottom of the temporary pit, permanent pit, or below-grade tank - NM Office of the State Engineer - iWATERS database search, USGS, Data obtained from nearby wells	<input type="checkbox"/> Yes <input checked="" type="checkbox"/> No
Within 300 feet of a continuously flowing watercourse, or 200 feet of any other significant watercourse or lakebed, sinkhole, or playa lake (measured from the ordinary high-water mark) - Topographic map, Visual inspection (certification) of the proposed site	<input type="checkbox"/> Yes <input checked="" type="checkbox"/> No
Within 300 feet from a permanent residence, school, hospital, institution, or church in existence at the time of initial application ( <i>Applies to temporary, emergency, or cavitation pits and below-grade tanks</i> ) - Visual inspection (certification) of the proposed site; Aerial photo, Satellite image	<input type="checkbox"/> Yes <input checked="" type="checkbox"/> No <input type="checkbox"/> NA
Within 1000 feet from a permanent residence, school, hospital, institution, or church in existence at the time of initial application ( <i>Applies to permanent pits</i> ) - Visual inspection (certification) of the proposed site, Aerial photo, Satellite image	<input type="checkbox"/> Yes <input type="checkbox"/> No <input checked="" type="checkbox"/> NA
Within 500 horizontal feet of a private, domestic fresh water well or spring that less than five households use for domestic or stock watering purposes, or within 1000 horizontal feet of any other fresh water well or spring, in existence at the time of initial application - NM Office of the State Engineer - iWATERS database search, Visual inspection (certification) of the proposed site	<input type="checkbox"/> Yes <input checked="" type="checkbox"/> No
Within incorporated municipal boundaries or within a defined municipal fresh water well field covered under a municipal ordinance adopted pursuant to NMSA 1978, Section 3-27-3, as amended - Written confirmation or verification from the municipality, Written approval obtained from the municipality	<input type="checkbox"/> Yes <input checked="" type="checkbox"/> No
Within 500 feet of a wetland - US Fish and Wildlife Wetland Identification map, Topographic map, Visual inspection (certification) of the proposed site	<input type="checkbox"/> Yes <input checked="" type="checkbox"/> No
Within the area overlying a subsurface mine - Written confirmation or verification or map from the NM EMNRD-Mining and Mineral Division	<input type="checkbox"/> Yes <input checked="" type="checkbox"/> No
Within an unstable area - Engineering measures incorporated into the design, NM Bureau of Geology & Mineral Resources, USGS, NM Geological Society; Topographic map	<input type="checkbox"/> Yes <input checked="" type="checkbox"/> No
Within a 100-year floodplam. - FEMA map	<input type="checkbox"/> Yes <input checked="" type="checkbox"/> No

11.

**Temporary Pits, Emergency Pits, and Below-grade Tanks Permit Application Attachment Checklist:** Subsection B of 19 15 17 9 NMAC

**Instructions:** Each of the following items must be attached to the application. Please indicate, by a check mark in the box, that the documents are attached.

- Hydrogeologic Report (Below-grade Tanks) - based upon the requirements of Paragraph (4) of Subsection B of 19.15 17 9 NMAC
- Hydrogeologic Data (Temporary and Emergency Pits) - based upon the requirements of Paragraph (2) of Subsection B of 19 15 17 9 NMAC
- Siting Criteria Compliance Demonstrations - based upon the appropriate requirements of 19 15 17 10 NMAC
- Design Plan - based upon the appropriate requirements of 19 15 17 11 NMAC
- Operating and Maintenance Plan - based upon the appropriate requirements of 19 15 17 12 NMAC
- Closure Plan (Please complete Boxes 14 through 18, if applicable) - based upon the appropriate requirements of Subsection C of 19 15 17 9 NMAC and 19 15 17 13 NMAC

Previously Approved Design (attach copy of design) API Number: \_\_\_\_\_ or Permit Number \_\_\_\_\_

12

**Closed-loop Systems Permit Application Attachment Checklist:** Subsection B of 19 15.17 9 NMAC

**Instructions:** Each of the following items must be attached to the application. Please indicate, by a check mark in the box, that the documents are attached.

- Geologic and Hydrogeologic Data (only for on-site closure) - based upon the requirements of Paragraph (3) of Subsection B of 19.15 17 9
- Siting Criteria Compliance Demonstrations (only for on-site closure) - based upon the appropriate requirements of 19 15 17 10 NMAC
- Design Plan - based upon the appropriate requirements of 19 15.17.11 NMAC
- Operating and Maintenance Plan - based upon the appropriate requirements of 19.15 17 12 NMAC
- Closure Plan (Please complete Boxes 14 through 18, if applicable) - based upon the appropriate requirements of Subsection C of 19 15.17 9 NMAC and 19 15.17 13 NMAC

Previously Approved Design (attach copy of design) API Number \_\_\_\_\_

Previously Approved Operating and Maintenance Plan API Number \_\_\_\_\_ (Applies only to closed-loop system that use above ground steel tanks or haul-off bins and propose to implement waste removal for closure)

13.

**Permanent Pits Permit Application Checklist:** Subsection B of 19.15.17 9 NMAC

**Instructions:** Each of the following items must be attached to the application. Please indicate, by a check mark in the box, that the documents are attached.

- Hydrogeologic Report - based upon the requirements of Paragraph (1) of Subsection B of 19 15 17 9 NMAC
- Siting Criteria Compliance Demonstrations - based upon the appropriate requirements of 19 15 17.10 NMAC
- Climatological Factors Assessment
- Certified Engineering Design Plans - based upon the appropriate requirements of 19.15 17 11 NMAC
- Dike Protection and Structural Integrity Design - based upon the appropriate requirements of 19.15 17 11 NMAC
- Leak Detection Design - based upon the appropriate requirements of 19 15 17 11 NMAC
- Liner Specifications and Compatibility Assessment - based upon the appropriate requirements of 19 15 17 11 NMAC
- Quality Control/Quality Assurance Construction and Installation Plan
- Operating and Maintenance Plan - based upon the appropriate requirements of 19.15 17 12 NMAC
- Freeboard and Overtopping Prevention Plan - based upon the appropriate requirements of 19 15.17 11 NMAC
- Nuisance or Hazardous Odors, including H<sub>2</sub>S, Prevention Plan
- Emergency Response Plan
- Oil Field Waste Stream Characterization
- Monitoring and Inspection Plan
- Erosion Control Plan
- Closure Plan - based upon the appropriate requirements of Subsection C of 19 15 17.9 NMAC and 19.15 17 13 NMAC

14.

**Proposed Closure:** 19 15.17 13 NMAC

**Instructions:** Please complete the applicable boxes, Boxes 14 through 18, in regards to the proposed closure plan.

Type  Drilling  Workover  Emergency  Cavitation  P&A  Permanent Pit  Below-grade Tank  Closed-loop System  
 Alternative

Proposed Closure Method  Waste Excavation and Removal  
 Waste Removal (Closed-loop systems only)  
 On-site Closure Method (Only for temporary pits and closed-loop systems)  
 In-place Burial  On-site Trench Burial  
 Alternative Closure Method (Exceptions must be submitted to the Santa Fe Environmental Bureau for consideration)

15.

**Waste Excavation and Removal Closure Plan Checklist:** (19 15 17 13 NMAC) **Instructions:** Each of the following items must be attached to the closure plan. Please indicate, by a check mark in the box, that the documents are attached.

- Protocols and Procedures - based upon the appropriate requirements of 19 15.17 13 NMAC
- Confirmation Sampling Plan (if applicable) - based upon the appropriate requirements of Subsection F of 19.15 17 13 NMAC
- Disposal Facility Name and Permit Number (for liquids, drilling fluids and drill cuttings)
- Soil Backfill and Cover Design Specifications - based upon the appropriate requirements of Subsection H of 19 15 17 13 NMAC
- Re-vegetation Plan - based upon the appropriate requirements of Subsection I of 19 15 17.13 NMAC
- Site Reclamation Plan - based upon the appropriate requirements of Subsection G of 19 15 17.13 NMAC

**Waste Removal Closure For Closed-loop Systems That Utilize Above Ground Steel Tanks or Haul-off Bins Only:** (19 15 17 13 D NMAC)

*Instructions: Please identify the facility or facilities for the disposal of liquids, drilling fluids and drill cuttings. Use attachment if more than two facilities are required.*

Disposal Facility Name: \_\_\_\_\_ Disposal Facility Permit Number: \_\_\_\_\_  
Disposal Facility Name \_\_\_\_\_ Disposal Facility Permit Number: \_\_\_\_\_

Will any of the proposed closed-loop system operations and associated activities occur on or in areas that *will not* be used for future service and operations?  
 Yes (If yes, please provide the information below)  No

*Required for impacted areas which will not be used for future service and operations:*

- Soil Backfill and Cover Design Specifications - based upon the appropriate requirements of Subsection H of 19 15.17 13 NMAC
- Re-vegetation Plan - based upon the appropriate requirements of Subsection I of 19.15 17.13 NMAC
- Site Reclamation Plan - based upon the appropriate requirements of Subsection G of 19 15 17 13 NMAC

**Siting Criteria (regarding on-site closure methods only):** 19 15 17 10 NMAC

*Instructions: Each siting criteria requires a demonstration of compliance in the closure plan. Recommendations of acceptable source material are provided below. Requests regarding changes to certain siting criteria may require administrative approval from the appropriate district office or may be considered an exception which must be submitted to the Santa Fe Environmental Bureau office for consideration of approval. Justifications and/or demonstrations of equivalency are required. Please refer to 19.15.17.10 NMAC for guidance.*

- |  |  |
|--|--|
| Ground water is less than 50 feet below the bottom of the buried waste<br>- NM Office of the State Engineer - iWATERS database search, USGS, Data obtained from nearby wells   | <input type="checkbox"/> Yes <input checked="" type="checkbox"/> No<br><input type="checkbox"/> NA |
| Ground water is between 50 and 100 feet below the bottom of the buried waste<br>- NM Office of the State Engineer - iWATERS database search, USGS, Data obtained from nearby wells   | <input type="checkbox"/> Yes <input checked="" type="checkbox"/> No<br><input type="checkbox"/> NA |
| Ground water is more than 100 feet below the bottom of the buried waste<br>- NM Office of the State Engineer - iWATERS database search, USGS, Data obtained from nearby wells  | <input checked="" type="checkbox"/> Yes <input type="checkbox"/> No<br><input type="checkbox"/> NA |
| Within 300 feet of a continuously flowing watercourse, or 200 feet of any other significant watercourse or lakebed, sinkhole, or playa lake (measured from the ordinary high-water mark)<br>- Topographic map, Visual inspection (certification) of the proposed site  | <input type="checkbox"/> Yes <input checked="" type="checkbox"/> No                                |
| Within 300 feet from a permanent residence, school, hospital, institution, or church in existence at the time of initial application<br>- Visual inspection (certification) of the proposed site; Aerial photo, Satellite image  | <input type="checkbox"/> Yes <input checked="" type="checkbox"/> No                                |
| Within 500 horizontal feet of a private, domestic fresh water well or spring that less than five households use for domestic or stock watering purposes, or within 1000 horizontal feet of any other fresh water well or spring, in existence at the time of initial application<br>- NM Office of the State Engineer - iWATERS database; Visual inspection (certification) of the proposed site | <input type="checkbox"/> Yes <input checked="" type="checkbox"/> No                                |
| Within incorporated municipal boundaries or within a defined municipal fresh water well field covered under a municipal ordinance adopted pursuant to NMSA 1978, Section 3-27-3, as amended<br>- Written confirmation or verification from the municipality, Written approval obtained from the municipality   | <input type="checkbox"/> Yes <input checked="" type="checkbox"/> No                                |
| Within 500 feet of a wetland<br>- US Fish and Wildlife Wetland Identification map; Topographic map, Visual inspection (certification) of the proposed site   | <input type="checkbox"/> Yes <input checked="" type="checkbox"/> No                                |
| Within the area overlying a subsurface mine<br>- Written confirmation or verification or map from the NM EMNRD-Mining and Mineral Division   | <input type="checkbox"/> Yes <input checked="" type="checkbox"/> No                                |
| Within an unstable area<br>- Engineering measures incorporated into the design, NM Bureau of Geology & Mineral Resources, USGS, NM Geological Society, Topographic map   | <input type="checkbox"/> Yes <input checked="" type="checkbox"/> No                                |
| Within a 100-year floodplain.<br>- FEMA map  | <input type="checkbox"/> Yes <input checked="" type="checkbox"/> No                                |

**On-Site Closure Plan Checklist:** (19.15.17 13 NMAC) *Instructions: Each of the following items must be attached to the closure plan. Please indicate, by a check mark in the box, that the documents are attached.*

- Siting Criteria Compliance Demonstrations - based upon the appropriate requirements of 19 15 17.10 NMAC
- Proof of Surface Owner Notice - based upon the appropriate requirements of Subsection F of 19 15.17 13 NMAC
- Construction/Design Plan of Burial Trench (if applicable) based upon the appropriate requirements of 19 15 17 11 NMAC
- Construction/Design Plan of Temporary Pit (for in-place burial of a drying pad) - based upon the appropriate requirements of 19.15 17 11 NMAC
- Protocols and Procedures - based upon the appropriate requirements of 19 15 17 13 NMAC
- Confirmation Sampling Plan (if applicable) - based upon the appropriate requirements of Subsection F of 19 15 17 13 NMAC
- Waste Material Sampling Plan - based upon the appropriate requirements of Subsection F of 19 15 17 13 NMAC
- Disposal Facility Name and Permit Number (for liquids, drilling fluids and drill cuttings or in case on-site closure standards cannot be achieved)
- Soil Cover Design - based upon the appropriate requirements of Subsection H of 19 15 17 13 NMAC
- Re-vegetation Plan - based upon the appropriate requirements of Subsection I of 19.15.17.13 NMAC
- Site Reclamation Plan - based upon the appropriate requirements of Subsection G of 19 15 17.13 NMAC

19

**Operator Application Certification:**

I hereby certify that the information submitted with this application is true, accurate and complete to the best of my knowledge and belief

Name (Print) \_\_\_\_\_ Title: \_\_\_\_\_

Signature \_\_\_\_\_ Date \_\_\_\_\_

e-mail address \_\_\_\_\_ Telephone \_\_\_\_\_

20

**OCD Approval:**  Permit Application (including closure plan)  Closure Plan (only)  OCD Conditions (see attachment)

OCD Representative Signature: Jonathan D. Kelly Approval Date: 9/2/2011

Title: Compliance Officer OCD Permit Number: \_\_\_\_\_

21.

**Closure Report (required within 60 days of closure completion):** Subsection K of 19.15 17 13 NMAC

*Instructions: Operators are required to obtain an approved closure plan prior to implementing any closure activities and submitting the closure report. The closure report is required to be submitted to the division within 60 days of the completion of the closure activities. Please do not complete this section of the form until an approved closure plan has been obtained and the closure activities have been completed.*

Closure Completion Date: 7/22/10

22

**Closure Method:**

Waste Excavation and Removal  On-Site Closure Method  Alternative Closure Method  Waste Removal (Closed-loop systems only)  
 If different from approved plan, please explain

23

**Closure Report Regarding Waste Removal Closure For Closed-loop Systems That Utilize Above Ground Steel Tanks or Haul-off Bins Only:**

*Instructions: Please identify the facility or facilities for where the liquids, drilling fluids and drill cuttings were disposed. Use attachment if more than two facilities were utilized.*

Disposal Facility Name \_\_\_\_\_ Disposal Facility Permit Number \_\_\_\_\_

Disposal Facility Name \_\_\_\_\_ Disposal Facility Permit Number \_\_\_\_\_

Were the closed-loop system operations and associated activities performed on or in areas that *will not* be used for future service and operations?

Yes (If yes, please demonstrate compliance to the items below)  No

*Required for impacted areas which will not be used for future service and operations*

- Site Reclamation (Photo Documentation)
- Soil Backfilling and Cover Installation
- Re-vegetation Application Rates and Seeding Technique

24

**Closure Report Attachment Checklist:** *Instructions: Each of the following items must be attached to the closure report. Please indicate, by a check mark in the box, that the documents are attached.*

- Proof of Closure Notice (surface owner and division)
- Proof of Deed Notice (required for on-site closure)
- Plot Plan (for on-site closures and temporary pits)
- Confirmation Sampling Analytical Results (if applicable)
- Waste Material Sampling Analytical Results (required for on-site closure)
- Disposal Facility Name and Permit Number
- Soil Backfilling and Cover Installation
- Re-vegetation Application Rates and Seeding Technique
- Site Reclamation (Photo Documentation)

On-site Closure Location Latitude 36 92798N Longitude -107 44682 NAD  1927  1983

25.

**Operator Closure Certification:**

I hereby certify that the information and attachments submitted with this closure report is true, accurate and complete to the best of my knowledge and belief I also certify that the closure complies with all applicable closure requirements and conditions specified in the approved closure plan.

Name (Print) Vanessa k Fields Title EH&S Specialist

Signature Vanessa k Fields Date 10-/05/10

e-mail address vanessa.fields@williams.co Telephone 505-634-4209

**Williams Production Co., LLC**  
**San Juan Basin: New Mexico Assets**  
Temporary Pit In-place Closure Report  
Drilling/Completion and Workover  
(Groundwater >100 feet bgs)

**Well:** Rosa Unit # 169D  
**API No:** 30-03930755  
**Location:** J-S#03#-T#31N-R#06W, NMPM

In accordance with Rule 19 15.17.13 NMAC, the following plan describes the general in-place closure requirements of temporary pits on Williams Production Co, LLC (WPX) locations in the San Juan Basin of New Mexico. This is WPX's standard procedure for all temporary pits to be utilized for the drilling, completion and/or workovers of oil and gas wells operated by WPX. For those temporary pits which do not conform to this standard closure plan, a separate well/pit specific closure plan will be developed and utilized

All closure activities will include proper documentation and will be submitted to OCD within 60 days of the pit closure on a Closure Report using Division Form C-144. The Report will include the following:

- Details on Capping and Covering, where applicable
- Plot Plan (Pit Diagram)
- Inspection reports
- Sampling Results
- Division Form C-105 WELL COMPLETION OR RECOMPLETION REPORT AND LOG
- Copy of Deed Notice filed with the County Clerk (format to meet County requirements)  
A deed notice is not required on state, federal or tribal land according to NMOCD FAQ dated October 30, 2008 and posted on the NMOCD website.

General Plan Requirements:

1. All free standing liquids will be removed from the pit at the start of the closure process. Liquids will be removed in a manner that the appropriate District Office approves including, recycled, reused, reclaimed, evaporated, and/or disposed of in a Division-approved facility. Once all free liquids are removed, the sludge will be stabilized by one of the following methods depending on equipment availability: blending with clean stockpiled soils or dewatering using a Bowl Decanter Centrifuge then blending with clean stockpiles soils.  
To the extent practical, free liquids were pulled from the reserve pit following the completion rigoff. Haul date was 6/14/10 to Rosa Unit SWD #001. (Order: SWD-916, API: 3003927055)
2. The preferred method of closure for all temporary pits will be on-site closure by in-place burial, provided all the criteria in 19 15 17.13.B are met.  
On-site burial plan for this location was approved by the Aztec District Office on (6/30/2009).
3. The surface owner shall be notified of WPX's proposed closure plan using a means that provides proof of notice (i.e. certified mail/return receipt requested)  
Williams notified the SMA of its intent to use a temporary pit and onsite burial in the Surface Use Plan in the well APD. The SMA was notified by email see attached. No return receipt required per BLM:FFO/NMOCD MOU dated 5/4/09.
4. Within six months of the "rig-off" status occurring WPX will ensure that the temporary pit is covered, recontoured and reseeding in progress  
Drill rig-off (9/13/09) Request for transfer to completion rig submitted (11/2/09) to OCD Aztec District Office, Completion rig-off (10/15/09). Pit covered (7/22/10). Pit area along with unused portions of well pad to be interim reclaimed in accordance with Surface Management Agency requirements in APD-COAs and per BLM FFO/NMOCD MOU dated 5/4/09.
5. Notice of Closure will be given to the Aztec District office between 72 hours and one week of the scheduled closure via email or phone. The notification of closure will include the following:
  - a. Operators Name (WPX)
  - b. Well Name and API Number
  - c. Location (USTR)The Aztec District Office of NMOCD was notified by email using a format acceptable to the District. Copies of the notification from Abode Contractors on (7/15/10) are attached.

6. The pit liner shall be removed above "mud level" after stabilization. Removal of the liner will consist of manually or mechanically cutting the liner at the mud level and removing all remaining liner. Care will be taken to remove "all" of the liner (i.e. anchored material). All excessive liner will be disposed of at a licensed disposal facility (probably San Juan Regional Landfill operated by Waste Management under NMED Permit SWM-052426).

The liner to the temporary pit was removed above the "mud level" once stabilized. Removal of the liner consisted of manually cutting the liner and removing all remaining liner material above the "mud level" including the anchor material. All excessive liner was disposed of at the San Juan Regional Landfill operated by Waste Management under NMED Permit SWM-052426.

7. Solidification of the remaining pit contents shall be achieved by mixing non-waste containing, earthen material. The solidification process will be accomplished use a combination of natural drying and mechanical mixing. Pit contents will be mixed with non-waste, earthen material to a consistency that is deemed safe and stable. The mixing ratio shall not exceed 3 parts non-waste to 1 part pit contents.

Following removal of free liquids, the pit contents were mixed with non-waste containing, earthen material in order to achieve appropriate solidification and a consistency that was deemed safe and stable. The solidification process was accomplished using a combination of natural drying, a Bowl Decanter Centrifuge, and mechanically mixing using a dozer and trackhoe. The mixing ration was approximately 2.5-3 parts native soil to 1 part pit contents. Solidification was completed (7/19/2010).

8. A five-point composite sample will be taken of the pit using sampling tools and all samples tested per 19.15.17.13(B)(1)(b) NMAC. In the event that the criteria are not met (See Table 1), all contents will be handled per 19.15.17.13(B)(1)(a) (i.e. dig and haul to a Division-approved facility). Approval to haul will be requested of the Aztec District office prior to initiation.

A five-point composite sampling was taken of the pit area using sampling tools and the sample was tested per 19.15.17.13(B)(1)(b) NMAC. Results are shown in Table 1 and lab reports are attached.

Table 1: Closure Criteria for Temporary Pits in Non-sensitive Areas with Groundwater >100 bgs

Components	Testing Methods	Limits (mg/Kg)	Pit (mg/Kg)
Benzene	EPA SW-846 Method 8021B or 8260B	0.2	ND
BTEX	EPA SW-846 Method 8021B or 8260B	50	0.0099
TPH	EPA SW-846 Method 418.1	2500	31.3
GRO/DRO	EPA SW-846 Method 8015M (GRO/DRO)	500	ND
Chlorides	EPA SW-846 Method 300.1	500	15

9. Upon completion of solidification and testing, the pit area will be backfilled with non-waste earthen material compacted to native conditions to enable effective revegetation for successful evapotranspiration. A minimum of four feet of cover including replacement of one foot of suitable material to establish vegetation, or the background thickness of topsoil, whichever is greater.

Upon completion of solidification and testing, the pit area was backfilled with non-waste earthen material compacted to native conditions. A minimum of four feet of cover to the extent practical was achieved and the cover included just over a foot of topsoil suitable to establish vegetation.

10. Following cover, the site will be recontoured to meet the Surface Management Agency or surface owner requirements. Re-contouring will attempt to match fit, shape, line form, and texture of the surrounding geography. Re-shaping will include drainage control, prevent ponding, and minimize erosion. Natural drainages will be unimpeded and stormwater Best Management Practices (BMPs) will be used to aid in soil stabilization and protection surface water quality.

Following cover, Williams reestablished drainage and contours to approximately match previous topography meeting the Conditions of Approval in the APD and the direction offered by a BLM/USFS inspector. Cover and re-contouring were completed (7/22/10).

11. Notification will be sent to the Aztec District office when the reclaimed area is seeded. Williams will comply with Surface Management Agency reseeding requirements in the COAs of the APD for the referenced well, per BLM:FFO/NMOCD MOU dated 5/4/09.

12. WPX shall seed the disturbed areas the first growing season after the pit is covered. Seeding will be accomplished via drilling on the contour whenever practical, or by other Division-approved methods. Vegetative cover will equal 70% of the native perennial vegetative cover (un-impacted) consisting of at least three native plant species, including at least one grass, but not including noxious weeds, and maintained that cover through two successive growing

seasons. Repeat seeding or planting will be continued until successful vegetative growth occurs. *Note: WPX assumes the seeding stipulations including mix and seeding methods specified by the Surface Management Agency (BLM, BOR, USFS, Tribal, etc.) or Land owner as part of a surface use agreement or APD are Division-approved methods unless notified by the Division of their unacceptability*

Williams will comply with Surface Management Agency reseeding requirements in the COAs of the APD for the referenced well, per BLM.FFO/NMOCD MOU dated 5/4/09.

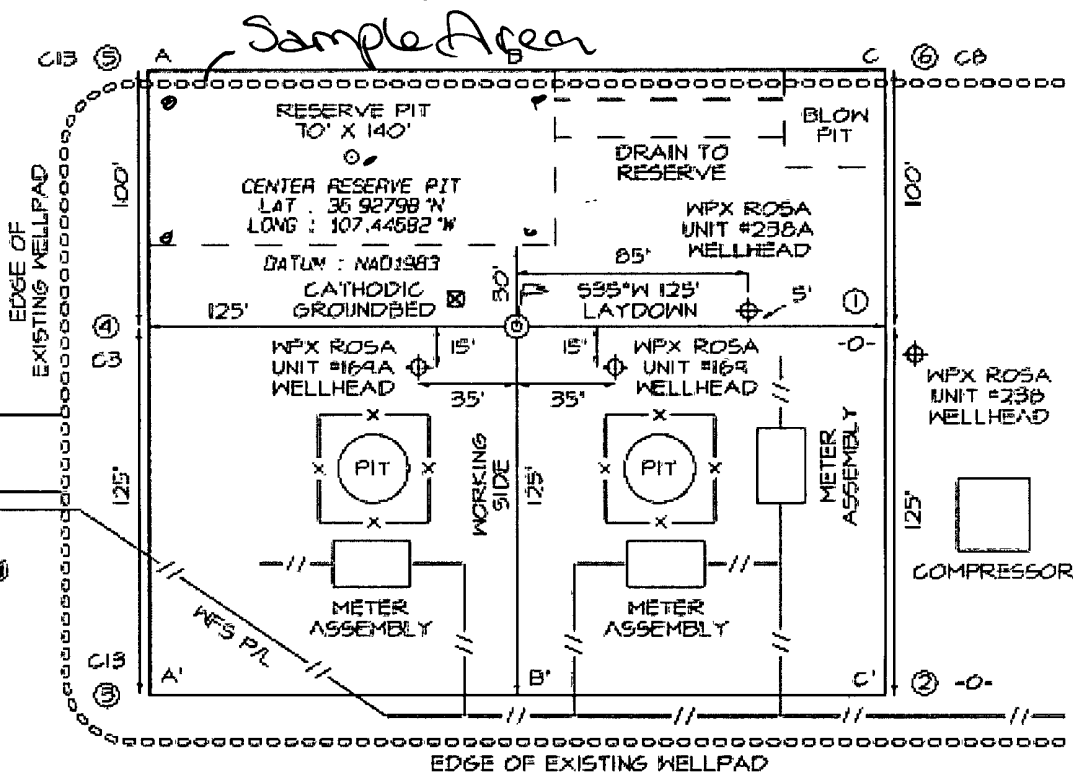
13. The temporary pit will be located with a steel marker, no less than four inches in diameter, cemented in a hole three feet deep in the center of the onsite burial upon the abandonment of all wells on the pad. The marker will be flush with the ground to allow access of the active well pad and for safety concerns. The marker will include a threaded collar to be used for future abandonment. The top of the marker will contain a welded steel 12" square plate that indicates the onsite burial of the temporary pit. The plate will be easily removable and a four-foot tall riser will be threaded into the top of the collar marker and welded around the base with the operations information at the time of all wells on the pad abandoned. The information will include Operator Name, Lease Name, Well Name, and number, USTR, and an indicator that the marker is an onsite pit burial location.

The temporary pit was located with a steel marker meeting the above listed specifications. The marker has the following information welded for future reference: Williams Production, NMSF-078768, S26-T31N-R05W-F, "Pit Burial" (photo attached). Steel marker set (8/16/10).

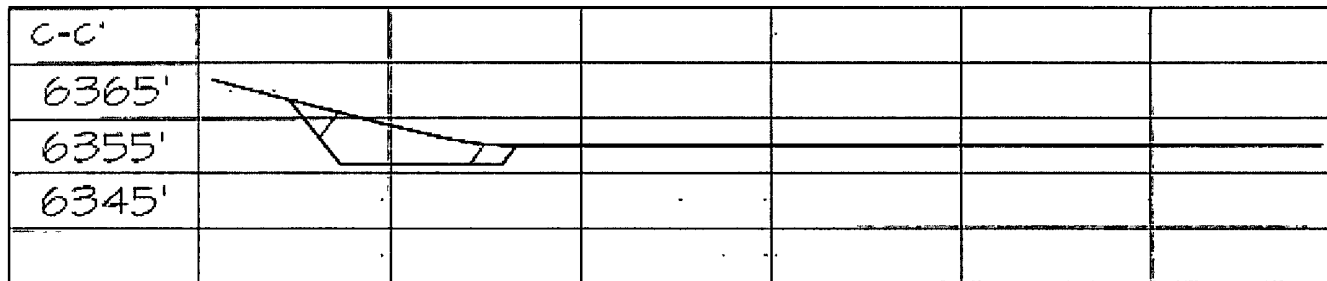
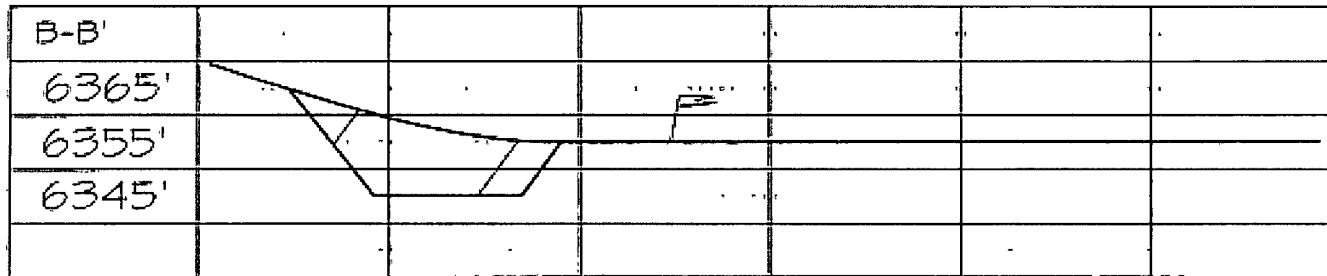
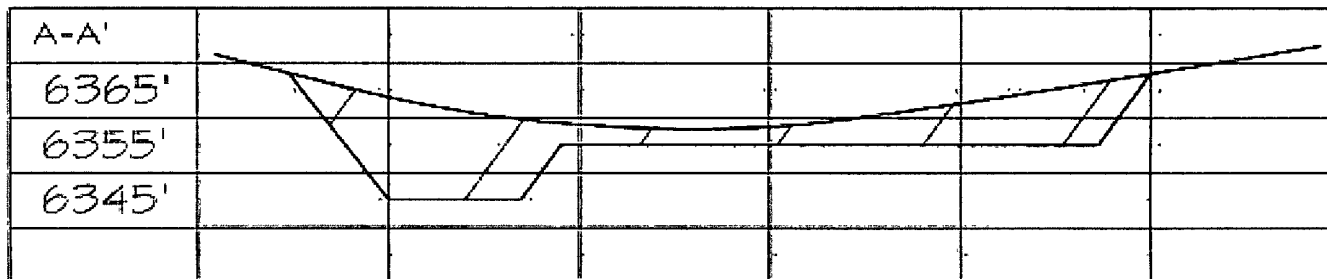


**WILLIAMS PRODUCTION COMPANY ROSA UNIT COM #169D**  
**2395' FSL & 1720' FEL, SECTION 3, T31N, R6W, NMPM**  
**RIO ARriba COUNTY, NEW MEXICO ELEVATION: 6355'**

**LATITUDE: 36.92796° N**  
**LONGITUDE: 107.44711° W**  
 DATUM: NAD1983



Steel T-Posts have been set to define the Edge of Disturbance limits which are 50' offset from the edge of the stacked wellpad.



FILENAME: B169.JT

SHEET 2 OF 3

NCE SURVEYS, INC.

DRAWN BY: EDO

CHECKED BY: JCE



**EPA METHOD 8015 Modified  
Nonhalogenated Volatile Organics  
Total Petroleum Hydrocarbons**

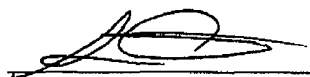
Client:	WPX	Project #:	04108-0136
Sample ID:	Reserve Pit	Date Reported:	08-19-10
Laboratory Number:	55591	Date Sampled:	08-16-10
Chain of Custody No.:	10208	Date Received:	08-18-10
Sample Matrix:	Soil	Date Extracted:	08-18-10
Preservative:	Cool	Date Analyzed:	08-19-10
Condition:	Intact	Analysis Requested:	8015 TPH

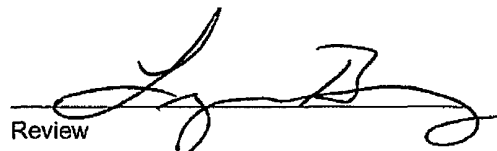
Parameter	Concentration (mg/Kg)	Det. Limit (mg/Kg)
Gasoline Range (C5 - C10)	ND	0.2
Diesel Range (C10 - C28)	ND	0.1
Total Petroleum Hydrocarbons	ND	0.2

ND - Parameter not detected at the stated detection limit.

References: Method 8015B, Nonhalogenated Volatile Organics, Test Methods for Evaluating Solid Waste, SW-846, USEPA, December 1996.

Comments: **Rosa Unit #169D**

  
\_\_\_\_\_  
Analyst

  
\_\_\_\_\_  
Review



**EPA Method 8015 Modified  
Nonhalogenated Volatile Organics  
Total Petroleum Hydrocarbons**

**Quality Assurance Report**

Client:	QA/QC	Project #:	N/A
Sample ID:	08-19-10 QA/QC	Date Reported:	08-19-10
Laboratory Number:	55591	Date Sampled:	N/A
Sample Matrix:	Methylene Chloride	Date Received:	N/A
Preservative:	N/A	Date Analyzed:	08-19-10
Condition:	N/A	Analysis Requested:	TPH

	L-Cal Date	L-Cal RF	C-Cal RF	% Difference	Accept. Range
Gasoline Range C5 - C10	08-19-10	9.9960E+002	1.0000E+003	0.04%	0 - 15%
Diesel Range C10 - C28	08-19-10	9.9960E+002	1.0000E+003	0.04%	0 - 15%

Blank Conc. (mg/L - mg/Kg)	Concentration	Detection Limit
Gasoline Range C5 - C10	ND	0.2
Diesel Range C10 - C28	ND	0.1
Total Petroleum Hydrocarbons	ND	0.2

Duplicate Conc. (mg/Kg)	Sample	Duplicate	% Difference	Accept. Range
Gasoline Range C5 - C10	ND	ND	0.0%	0 - 30%
Diesel Range C10 - C28	ND	ND	0.0%	0 - 30%

Spike Conc. (mg/Kg)	Sample	Spike Added	Spike Result	% Recovery	Accept. Range
Gasoline Range C5 - C10	ND	250	253	101%	75 - 125%
Diesel Range C10 - C28	ND	250	260	104%	75 - 125%

ND - Parameter not detected at the stated detection limit.

References: Method 8015B, Nonhalogenated Volatile Organics, Test Methods for Evaluating Solid Waste, SW-846, USEPA, December 1996.

Comments: QA/QC for Samples 55590-55594

\_\_\_\_\_  
Analyst

\_\_\_\_\_  
Review

Client:	WPX	Project #:	04108-0136
Sample ID:	Reserve Pit	Date Reported:	08-19-10
Laboratory Number:	55591	Date Sampled:	08-16-10
Chain of Custody:	10208	Date Received:	08-18-10
Sample Matrix:	Soil	Date Analyzed:	08-19-10
Preservative:	Cool	Date Extracted:	08-18-10
Condition:	Intact	Analysis Requested:	BTEX

Parameter	Concentration (ug/Kg)	Det. Limit (ug/Kg)
Benzene	ND	0.9
Toluene	1.8	1.0
Ethylbenzene	1.2	1.0
p,m-Xylene	3.0	1.2
o-Xylene	3.9	0.9
<b>Total BTEX</b>	<b>9.9</b>	

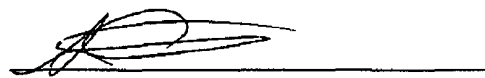
ND - Parameter not detected at the stated detection limit.

Surrogate Recoveries:	Parameter	Percent Recovery
	Fluorobenzene	101 %
	1,4-difluorobenzene	101 %
	Bromochlorobenzene	100 %

References: Method 5030B, Purge-and-Trap, Test Methods for Evaluating Solid Waste, SW-846, USEPA, December 1996.

Method 8021B, Aromatic Volatile Organics, Test Methods for Evaluating Solid Waste, SW-846, USEPA, December 1996.

Comments: Rosa Unit #169D



Analyst



Review



EPA METHOD 8021  
AROMATIC VOLATILE ORGANICS

Client:	N/A	Project #:	N/A
Sample ID:	0819BBLK QA/QC	Date Reported:	08-19-10
Laboratory Number:	55588	Date Sampled:	N/A
Sample Matrix:	Soil	Date Received:	N/A
Preservative:	N/A	Date Analyzed:	08-19-10
Condition:	N/A	Analysis:	BTEX

Calibration and Detection Limits (ug/L)	I-Cal RF	C-Cal RF	%Diff	Blank Conc	Detect Limit
Benzene	7.9650E+005	7.9809E+005	0.2%	ND	0.1
Toluene	8.8644E+005	8.8822E+005	0.2%	ND	0.1
Ethylbenzene	8.0026E+005	8.0187E+005	0.2%	ND	0.1
p,m-Xylene	1.9436E+006	1.9475E+006	0.2%	ND	0.1
o-Xylene	7.1916E+005	7.2060E+005	0.2%	ND	0.1


Duplicate Conc. (ug/Kg)	Sample	Duplicate	%Diff	Accept Range	Detect Limit
Benzene	ND	ND	0.0%	0 - 30%	0.9
Toluene	ND	ND	0.0%	0 - 30%	1.0
Ethylbenzene	ND	ND	0.0%	0 - 30%	1.0
p,m-Xylene	ND	ND	0.0%	0 - 30%	1.2
o-Xylene	ND	ND	0.0%	0 - 30%	0.9

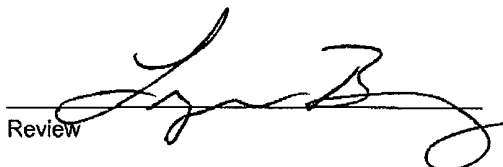
Spike Conc. (ug/Kg)	Sample	Amount Spiked	Spiked Sample	%Recovery	Accept Range
Benzene	ND	50.0	50.8	102%	39 - 150
Toluene	ND	50.0	50.3	101%	46 - 148
Ethylbenzene	ND	50.0	50.1	100%	32 - 160
p,m-Xylene	ND	100	101	101%	46 - 148
o-Xylene	ND	50.0	50.0	100%	46 - 148

ND - Parameter not detected at the stated detection limit.

References: Method 5030B, Purge-and-Trap, Test Methods for Evaluating Solid Waste, SW-846, USEPA, December 1996.  
Method 8021B, Aromatic and Halogenated Volatiles by Gas Chromatography Using Photoionization and/or Electrolytic Conductivity Detectors, SW-846, USEPA December 1996.

Comments: QA/QC for Samples 55588-55594

  
Analyst

  
Review


Client:	WPX	Project #:	04108-0136
Sample ID:	Reserve Pit	Date Reported:	08-19-10
Laboratory Number:	55591	Date Sampled:	08-16-10
Chain of Custody No:	10208	Date Received:	08-18-10
Sample Matrix:	Soil	Date Extracted:	08-19-10
Preservative:	Cool	Date Analyzed:	08-19-10
Condition:	Intact	Analysis Needed:	TPH-418.1

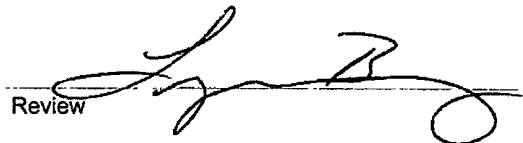
Parameter	Concentration (mg/kg)	Det. Limit (mg/kg)
<b>Total Petroleum Hydrocarbons</b>	<b>31.3</b>	<b>23.8</b>

ND = Parameter not detected at the stated detection limit.

References: Method 418.1, Petroleum Hydrocarbons, Total Recoverable, Chemical Analysis of Water and Waste, USEPA Storet No. 4551, 1978.

Comments: **Rosa Unit #169D**

  
Analyst

  
Review



**EPA METHOD 418.1  
TOTAL PETROLEUM  
HYDROCARBONS  
QUALITY ASSURANCE REPORT**

Client:	QA/QC	Project #:	N/A
Sample ID:	QA/QC	Date Reported:	08-19-10
Laboratory Number:	08-19-TPH.QA/QC 55591	Date Sampled:	N/A
Sample Matrix:	Freon-113	Date Analyzed:	08-19-10
Preservative:	N/A	Date Extracted:	08-19-10
Condition:	N/A	Analysis Needed:	TPH

<b>Calibration</b>	I-Cal Date	C-Cal Date	I-Cal RF:	C-Cal RF:	% Difference	Accept. Range
	07-29-10	08-19-10	1,860	1,770	4.8%	+/- 10%

<b>Blank Conc. (mg/Kg)</b>	Concentration	Detection Limit
TPH	ND	23.8


<b>Duplicate Conc. (mg/Kg)</b>	Sample	Duplicate	% Difference	Accept. Range
TPH	31.3	37.2	18.8%	+/- 30%

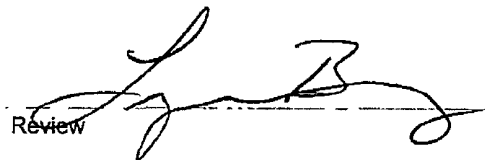
<b>Spike Conc. (mg/Kg)</b>	Sample	Spike Added	Spike Result	% Recovery	Accept Range
TPH	31.3	2,000	1,860	91.6%	80 - 120%

ND = Parameter not detected at the stated detection limit.

References: Method 418.1, Petroleum Hydrocarbons, Total Recoverable, Chemical Analysis of Water and Waste, USEPA Storet No. 4551, 1978.

Comments: QA/QC for Samples 55591-55594, 55597-55601

  
Analyst

  
Review

Client:	WPX	Project #:	04108-0136
Sample ID:	Reserve Pit	Date Reported:	08-19-10
Lab ID#:	55591	Date Sampled:	08-16-10
Sample Matrix:	Soil	Date Received:	08-18-10
Preservative:	Cool	Date Analyzed:	08-19-10
Condition:	Intact	Chain of Custody:	10208

Parameter	Concentration (mg/Kg)
-----------	-----------------------


Total Chloride

15

Reference: U.S.E.P.A., 4500B, "Methods for Chemical Analysis of Water and Wastes", 1983.  
Standard Methods For The Examination of Water And Waste Water", 18th ed., 1992.

Comments: **Rosa Unit #169D**

  
Analyst

  
Review



# CHAIN OF CUSTODY RECORD

10208

Client: <b>WPX</b>	Project Name / Location: <b>Rosa unit # 169 D</b>	ANALYSIS / PARAMETERS											
Client Address: <b>myke Lane</b>	Sampler Name: <b>Glen Shelby</b>	TPH (Method 8015)	BTEX (Method 8021)	VOC (Method 8260)	RCRA 8 Metals	Cation / Anion	RCI	TCLP with H/P	PAH	TPH (418.1)	CHLORIDE	Sample Cool	Sample Intact
Client Phone No.:	Client No.: <b>04108 - 0136</b>												

Sample No./ Identification	Sample Date	Sample Time	Lab No.	Sample Matrix	No./Volume of Containers	Preservative		TPH (Method 8015)	BTEX (Method 8021)	VOC (Method 8260)	RCRA 8 Metals	Cation / Anion	RCI	TCLP with H/P	PAH	TPH (418.1)	CHLORIDE	Sample Cool	Sample Intact
						HgCl <sub>2</sub>	HCl												
<b>Receipt</b>	<b>8.16.10</b>	<b>1:52 PM</b>	<b>555A1</b>	Soil Sludge Solid Aqueous	1			✓	✓									✓	✓
				Soil Sludge Solid Aqueous															
				Soil Sludge Solid Aqueous															
				Soil Sludge Solid Aqueous															
				Soil Sludge Solid Aqueous															
				Soil Sludge Solid Aqueous															
				Soil Sludge Solid Aqueous															
				Soil Sludge Solid Aqueous															
				Soil Sludge Solid Aqueous															
				Soil Sludge Solid Aqueous															

Relinquished by: (Signature) 	Date <b>8.18.10</b>	Time <b>10:10 AM</b>	Received by: (Signature) 	Date <b>8/15/10</b>	Time <b>10:10</b>
Relinquished by: (Signature)			Received by: (Signature)		
Relinquished by: (Signature)			Received by: (Signature)		



5796 US Highway 64 • Farmington, NM 87401 • 505-632-0615 • lab@envirotech-inc.com

**Meador, Tasha**

---

**From:** Glenn Shelby [glenn@adobecontractorsinc.com]  
**Sent:** Thursday, July 15, 2010 1:59 PM  
**To:** Brandon Powell  
**Cc:** Meador, Tasha; Johnny Stinson; Lane, Myke  
**Subject:** Williams cleanups, Rosa Unit 169D

On July 19th we will be moving equipment and starting the cleanup on the Rosa Unit 169D. If you have any questions call me.

Thanks,  
Glenn Shelby  
Field Foreman  
Adobe Contractors, Inc.  
Cell: 320-7187  
[glenn@adobecontractorsinc.com](mailto:glenn@adobecontractorsinc.com)

7/19/2010

**Meador, Tasha**

---

**From:** Glenn Shelby [glenn@adobecontractorsinc.com]  
**Sent:** Thursday, July 15, 2010 1:57 PM  
**To:** Sherrie Landon; Randy Mckee; Bob Switzer; Bill Liess, Mark Kelly  
**Cc:** Meador, Tasha; Johnny Stinson; Lane, Myke  
**Subject:** Williams cleanups, Rosa Unit 169D

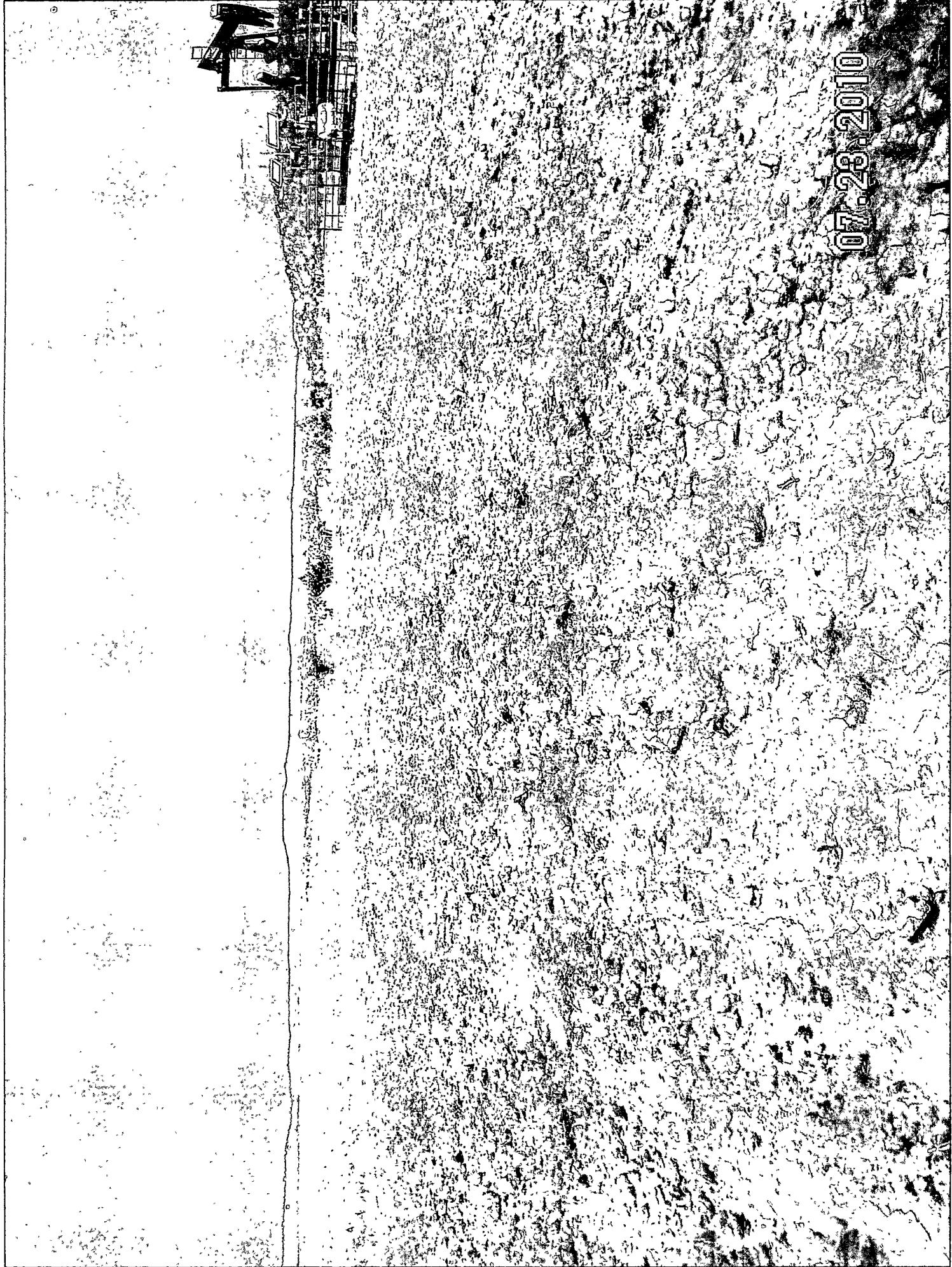
On July 19th we will be moving equipment and starting the cleanup on the Rosa Unit 169D. If you have any questions call me.

Thanks,  
Glenn Shelby  
Field Foreman  
Adobe Contractors, Inc.  
Cell: 320-7187  
[glenn@adobecontractorsinc.com](mailto:glenn@adobecontractorsinc.com)

7/19/2010

08:16:2010

THE UNIVERSITY OF CHICAGO  
THE UNIVERSITY OF CHICAGO  
THE UNIVERSITY OF CHICAGO  
THE UNIVERSITY OF CHICAGO  
THE UNIVERSITY OF CHICAGO  
THE UNIVERSITY OF CHICAGO



07-28-2010

Exploration & Production  
 San Juan Basin Operations  
 720 So. Main / PO Box 640  
 Aztec, NM 87410  
 505-634-4200 / 505-634-4205 fax



**Temporary Pit Inspection**

**FACILITY INFORMATION**

<b>Facility Name: Rosa Unit #169-D</b>	<b>API #: 30-039-30755</b>
--	----------------------------

<b>Pit Type:</b> <input checked="" type="checkbox"/> Drilling <input type="checkbox"/> Workover <input type="checkbox"/> Cavitation	<b>Inspection:</b> <input checked="" type="checkbox"/> Daily <input type="checkbox"/> Weekly <input type="checkbox"/> Monthly
---	---

Pit Liner intact (no visible tears)	<input checked="" type="checkbox"/> Yes <input type="checkbox"/> No If No, Report to EH&S immediately	Date / Time Reported:
Pit Properly Fenced (no fence on rig side if on site)	<input checked="" type="checkbox"/> Yes <input type="checkbox"/> No <input type="checkbox"/> Not Required (if site fully fenced)	
Pit Slopes intact	<input checked="" type="checkbox"/> Yes <input type="checkbox"/> No	
Adequate freeboard (liquid level 2 vertical feet from berm top)	<input checked="" type="checkbox"/> Yes <input type="checkbox"/> No <input type="checkbox"/> Not Applicable	
Free oil or sheen present on pit	<input type="checkbox"/> Yes <input checked="" type="checkbox"/> No	
Flare Pit free of liquids	<input checked="" type="checkbox"/> Yes <input type="checkbox"/> No <input type="checkbox"/> Not Applicable	
Comment:		
Inspector Signature: HARMON COCKRELL		
Printed Name: HARMON COCKRELL		
Title: DRILLING CONSULTANT (T.D.C.I.)		
Date: 8/31/2009	Phone: (505) 486-1935	

Record Retention: Submit with Closure  
 File: EH&S

Exploration & Production  
 San Juan Basin Operations  
 720 So. Main / PO Box 640  
 Aztec, NM 87410  
 505-634-4200 / 505-634-4205 fax



**Temporary Pit Inspection**

**FACILITY INFORMATION**

<b>Facility Name:</b> Rosa Unit #169-D	<b>API #:</b> 30-039-30755
--	----------------------------

<b>Pit Type:</b> <input checked="" type="checkbox"/> Drilling <input type="checkbox"/> Workover <input type="checkbox"/> Cavitation	<b>Inspection:</b> <input checked="" type="checkbox"/> Daily <input type="checkbox"/> Weekly <input type="checkbox"/> Monthly
---	---

Pit Liner intact (no visible tears)	<input checked="" type="checkbox"/> Yes <input type="checkbox"/> No If No, Report to EH&S immediately	Date / Time Reported:
Pit Properly Fenced (no fence on rig side if on site)	<input checked="" type="checkbox"/> Yes <input type="checkbox"/> No <input type="checkbox"/> Not Required (if site fully fenced)	
Pit Slopes intact	<input checked="" type="checkbox"/> Yes <input type="checkbox"/> No	
Adequate freeboard (liquid level 2 vertical feet from berm top)	<input checked="" type="checkbox"/> Yes <input type="checkbox"/> No <input type="checkbox"/> Not Applicable	
Free oil or sheen present on pit	<input type="checkbox"/> Yes <input checked="" type="checkbox"/> No	
Flare Pit free of liquids	<input checked="" type="checkbox"/> Yes <input type="checkbox"/> No <input type="checkbox"/> Not Applicable	

Comment:

Inspector Signature: HARMON COCKRELL

Printed Name: HARMON COCKRELL

Title: DRILLING CONSULTANT (T.D.C.I.)

Date: 9/1/2009 Phone: (505) 486-1935

Record Retention Submit with Closure  
 File: EH&S

Exploration & Production  
 San Juan Basin Operations  
 720 So. Main / PO Box 640  
 Aztec, NM 87410  
 505-634-4200 / 505-634-4205 fax



### Temporary Pit Inspection

#### FACILITY INFORMATION

<b>Facility Name: Rosa Unit #169-D</b>	<b>API #: 30-039-30755</b>
--	----------------------------

<b>Pit Type:</b> <input checked="" type="checkbox"/> Drilling <input type="checkbox"/> Workover <input type="checkbox"/> Cavitation	<b>Inspection:</b> <input checked="" type="checkbox"/> Daily <input type="checkbox"/> Weekly <input type="checkbox"/> Monthly
---	---

Pit Liner intact (no visible tears)	<input checked="" type="checkbox"/> Yes <input type="checkbox"/> No If No, Report to EH&S immediately	Date / Time Reported:
Pit Properly Fenced (no fence on rig side if on site)	<input checked="" type="checkbox"/> Yes <input type="checkbox"/> No <input type="checkbox"/> Not Required (if site fully fenced)	
Pit Slopes intact	<input checked="" type="checkbox"/> Yes <input type="checkbox"/> No	
Adequate freeboard (liquid level 2 <u>vertical</u> feet from berm top)	<input checked="" type="checkbox"/> Yes <input type="checkbox"/> No <input type="checkbox"/> Not Applicable	
Free oil or sheen present on pit	<input type="checkbox"/> Yes <input checked="" type="checkbox"/> No	
Flare Pit free of liquids	<input checked="" type="checkbox"/> Yes <input type="checkbox"/> No <input type="checkbox"/> Not Applicable	
Comment:		
Inspector Signature: HARMON COCKRELL		
Printed Name: HARMON COCKRELL		
Title: DRILLING CONSULTANT (T.D.C.I.)		
Date: 9/2/2009	Phone: (505) 486-1935	

Record Retention Submit with Closure  
 File: EH&S



Exploration & Production  
 San Juan Basin Operations  
 720 So. Main / PO Box 640  
 Aztec, NM 87410  
 505-634-4200 / 505-634-4205 fax



**Temporary Pit Inspection**

**FACILITY INFORMATION**

<b>Facility Name:</b> Rosa Unit #169-D	<b>API #:</b> 30-039-30755
--	----------------------------

**Pit Type:**  Drilling  Workover  Cavitation **Inspection:**  Daily  Weekly  Monthly

Pit Liner intact (no visible tears)	<input checked="" type="checkbox"/> Yes <input type="checkbox"/> No If No, Report to EH&S immediately	Date / Time Reported:
Pit Properly Fenced (no fence on rig side if on site)	<input checked="" type="checkbox"/> Yes <input type="checkbox"/> No <input type="checkbox"/> Not Required (if site fully fenced)	
Pit Slopes intact	<input checked="" type="checkbox"/> Yes <input type="checkbox"/> No	
Adequate freeboard (liquid level 2 <u>vertical</u> feet from berm top)	<input checked="" type="checkbox"/> Yes <input type="checkbox"/> No <input type="checkbox"/> Not Applicable	
Free oil or sheen present on pit	<input type="checkbox"/> Yes <input checked="" type="checkbox"/> No	
Flare Pit free of liquids	<input checked="" type="checkbox"/> Yes <input type="checkbox"/> No <input type="checkbox"/> Not Applicable	
Comment:		
Inspector Signature: HARMON COCKRELL		
Printed Name: HARMON COCKRELL		
Title: DRILLING CONSULTANT (T.D.C.I.)		
Date: 9/3/2009	Phone: (505) 486-1935	

Record Retention Submit with Closure  
 File: EH&S

Exploration & Production  
 San Juan Basin Operations  
 720 So. Main / PO Box 640  
 Aztec, NM 87410  
 505-634-4200 / 505-634-4205 fax



**Temporary Pit Inspection**

**FACILITY INFORMATION**

<b>Facility Name:</b> Rosa Unit #169-D	<b>API #:</b> 30-039-30755
--	----------------------------

<b>Pit Type:</b> <input checked="" type="checkbox"/> Drilling <input type="checkbox"/> Workover <input type="checkbox"/> Cavitation	<b>Inspection:</b> <input checked="" type="checkbox"/> Daily <input type="checkbox"/> Weekly <input type="checkbox"/> Monthly
---	---

Pit Liner intact (no visible tears)	<input checked="" type="checkbox"/> Yes <input type="checkbox"/> No If No, Report to EH&S immediately	Date / Time Reported:
Pit Properly Fenced (no fence on rig side if on site)	<input checked="" type="checkbox"/> Yes <input type="checkbox"/> No <input type="checkbox"/> Not Required (if site fully fenced)	
Pit Slopes intact	<input checked="" type="checkbox"/> Yes <input type="checkbox"/> No	
Adequate freeboard (liquid level 2 vertical feet from berm top)	<input checked="" type="checkbox"/> Yes <input type="checkbox"/> No <input type="checkbox"/> Not Applicable	
Free oil or sheen present on pit	<input type="checkbox"/> Yes <input checked="" type="checkbox"/> No	
Flare Pit free of liquids	<input checked="" type="checkbox"/> Yes <input type="checkbox"/> No <input type="checkbox"/> Not Applicable	
Comment:		
Inspector Signature: HARMON COCKRELL		
Printed Name: HARMON COCKRELL		
Title: DRILLING CONSULTANT (T.D.C.I.)		
Date: 9/4/2009	Phone: (505) 486-1935	

Record Retention: Submit with Closure  
 File: EH&S

Exploration & Production  
 San Juan Basin Operations  
 720 So. Main / PO Box 640  
 Aztec, NM 87410  
 505-634-4200 / 505-634-4205 fax



**Temporary Pit Inspection**

**FACILITY INFORMATION**

<b>Facility Name: Rosa Unit #169-D</b>	<b>API #: 30-039-30755</b>
--	----------------------------

<b>Pit Type:</b> <input checked="" type="checkbox"/> Drilling <input type="checkbox"/> Workover <input type="checkbox"/> Cavitation	<b>Inspection:</b> <input checked="" type="checkbox"/> Daily <input type="checkbox"/> Weekly <input type="checkbox"/> Monthly
---	---

Pit Liner intact (no visible tears)	<input checked="" type="checkbox"/> Yes <input type="checkbox"/> No If No, Report to EH&S immediately	Date / Time Reported:
Pit Properly Fenced (no fence on rig side if on site)	<input checked="" type="checkbox"/> Yes <input type="checkbox"/> No <input type="checkbox"/> Not Required (if site fully fenced)	
Pit Slopes intact	<input checked="" type="checkbox"/> Yes <input type="checkbox"/> No	
Adequate freeboard (liquid level 2 vertical feet from berm top)	<input checked="" type="checkbox"/> Yes <input type="checkbox"/> No <input type="checkbox"/> Not Applicable	
Free oil or sheen present on pit	<input type="checkbox"/> Yes <input checked="" type="checkbox"/> No	
Flare Pit free of liquids	<input checked="" type="checkbox"/> Yes <input type="checkbox"/> No <input type="checkbox"/> Not Applicable	
Comment:		
Inspector Signature: HARMON COCKRELL		
Printed Name: HARMON COCKRELL		
Title: DRILLING CONSULTANT (T.D.C.I.)		
Date: 9/5/2009	Phone: (505) 486-1935	

Record Retention: Submit with Closure  
 File: EH&S

Exploration & Production  
 San Juan Basin Operations  
 720 So. Main / PO Box 640  
 Aztec, NM 87410  
 505-634-4200 / 505-634-4205 fax



**Temporary Pit Inspection**

**FACILITY INFORMATION**

<b>Facility Name:</b> Rosa Unit #169-D	<b>API #:</b> 30-039-30755
--	----------------------------

<b>Pit Type:</b> <input checked="" type="checkbox"/> Drilling <input type="checkbox"/> Workover <input type="checkbox"/> Cavitation	<b>Inspection:</b> <input checked="" type="checkbox"/> Daily <input type="checkbox"/> Weekly <input type="checkbox"/> Monthly
---	---

Pit Liner intact (no visible tears)	<input checked="" type="checkbox"/> Yes <input type="checkbox"/> No If No, Report to EH&S immediately	Date / Time Reported:
Pit Properly Fenced (no fence on rig side if on site)	<input checked="" type="checkbox"/> Yes <input type="checkbox"/> No <input type="checkbox"/> Not Required (if site fully fenced)	
Pit Slopes intact	<input checked="" type="checkbox"/> Yes <input type="checkbox"/> No	
Adequate freeboard (liquid level 2 vertical feet from berm top)	<input checked="" type="checkbox"/> Yes <input type="checkbox"/> No <input type="checkbox"/> Not Applicable	
Free oil or sheen present on pit	<input type="checkbox"/> Yes <input checked="" type="checkbox"/> No	
Flare Pit free of liquids	<input checked="" type="checkbox"/> Yes <input type="checkbox"/> No <input type="checkbox"/> Not Applicable	
Comment:		
Inspector Signature: HARMON COCKRELL		
Printed Name: HARMON COCKRELL		
Title: DRILLING CONSULTANT (T.D.C.I.)		
Date: 9/6/2009		Phone: (505) 486-1935

Record Retention: Submit with Closure  
 File: EH&S

BASIN DISPOSAL INC  
 PO BOX 100  
 AZTEC, NM 87410

INVOICE#BASW205  
 DATE: SEPTEMBER 22, 2010  
 HERCULES TRUCKING

RC: NXECC119608 - C COCKRELL  
 WILLIAMS PRODUCTION  
 P O BOX 640  
 AZTEC NM 87410

CODING	LOCATION	DATE	BASIN	HERC	BBLs	LDS	SUB	TAX	TOTAL
			TKT	TKT					
62045758	Bondad 33-10 016A	09/21/10	505173	59398	70	1	59 50	4 57	64 07
62041087	Bondad 33-10 016	09/22/10	505230	60677	10	1	8 50	0 65	9 15
62051867	Bondad 33-10 017	09/22/10	505235	59399	70	1	59 50	4 57	64 07
62050760	Bondad 33-9 007	09/20/10	504993	59391	30	1	25 50	1 96	27 46
62048539	Bondad 33-9 008	09/13/10	504178	59370	70	1	59 50	4 57	64 07
62051684	Bondad 33-9 010	09/17/10	504764	60665	80	1	68 00	5 23	73 23
62051256	Bondad 33-9 011	09/13/10	504166	58242	75	1	63 75	4 90	68 65
62045957	Bondad 33-9 013A	09/02/10	503057	58212	55	1	46 75	3 59	50 34
62045964	Bondad 33-9 014A	09/14/10	504333	59375	70	1	59 50	4 57	64 07
50/50 Split	Bondad 33-9 015A DK/MV	09/21/10	505125	59395	70	1	59 50	4 57	64 07
62048817	Bondad 33-9 018A	09/13/10	504167	59368	70	1	59 50	4 57	64 07
62045956	Bondad 33-9 023A	09/13/10	504229	58244	80	1	68 00	5 23	73 23
62051797	Bondad 33-9 024	09/02/10	503057	58211	25	1	21 25	1 63	22 88
62049478	Bondad 33-9 031	09/14/10	504398	60651	75	1	63 75	4 90	68 65
62050187	Bondad 33-9 033A	09/20/10	505022	59393	60	1	51 00	3 92	54 92
62044272	Bondad 33-9 047 DK	09/20/10	504993	59390	40	1	34 00	2 61	36 61
62048820	Bondad 33-9 054	09/21/10	505099	59394	70	1	59 50	4 57	64 07
62049462	Cox Canyon 001C	09/22/10	505282	59146	80	1	68 00	5 23	73 23
62050360	Cox Canyon 003C	09/13/10	504268	58245	80	1	68 00	5 23	73 23
62050360	Cox Canyon 003C	09/16/10	504590	60042	80	1	68 00	5 23	73 23
62043699	Cox Canyon 004A	09/16/10	504608	59119	20	1	17 00	1 31	18 31
62050359	Cox Canyon 004C	09/16/10	504608	59120	60	1	51 00	3 92	54 92
62050359	Cox Canyon 004C	09/16/10	504634	59121	80	1	68 00	5 23	73 23
62043476	Cox Canyon 005	09/13/10	504187	59094	80	1	68 00	5 23	73 23
62049238	Cox Canyon 006B	09/14/10	504392	59107	80	1	68 00	5 23	73 23
62049238	Cox Canyon 006B	09/22/10	505283	60560	40	1	34 00	2 61	36 61
50/50 Split	Cox Canyon 009B DK/MV	09/21/10	505137	59340	80	1	68 00	5 23	73 23
62049278	McCarville 001	09/14/10	504358	59376	70	1	59 50	4 57	64 07
50/50 Split	NM 32-11 001B DK/MV	09/21/10	505136	59820	70	1	59 50	4 57	64 07
62043489	NM 32-11 002 MV	09/13/10	504191	60025	80	1	68 00	5 23	73 23
62044938	NM 32-11 002A MV	09/13/10	504209	58243	15	1	12 75	0 98	13 73
62045514	NWCH 32-10 007	09/22/10	505230	60677	20	1	17 00	1 31	18 31
62046066	NWCH 32-10 010A	09/22/10	505233	60558	80	1	68 00	5 23	73 23
50/50 Split	NWCH 32-10 017A MV/PC	09/21/10	505198	60676	80	1	68 00	5 23	73 23
					<b>2,115</b>	<b>34</b>	<b>1,797.75</b>	<b>138.18</b>	<b>1,935.93</b>

Exploration & Production  
 San Juan Basin Operations  
 720 So. Main / PO Box 640  
 Aztec, NM 87410  
 505-634-4200 / 505-634-4205 fax



**Temporary Pit Inspection**

**FACILITY INFORMATION**

<b>Facility Name:</b> Rosa Unit #169-D	<b>API #:</b> 30-039-30755
--	----------------------------

<b>Pit Type:</b> <input checked="" type="checkbox"/> Drilling <input type="checkbox"/> Workover <input type="checkbox"/> Cavitation	<b>Inspection:</b> <input checked="" type="checkbox"/> Daily <input type="checkbox"/> Weekly <input type="checkbox"/> Monthly
---	---

Pit Liner intact (no visible tears)	<input checked="" type="checkbox"/> Yes <input type="checkbox"/> No If No, Report to EH&S immediately	Date / Time Reported:
Pit Properly Fenced (no fence on rig side if on site)	<input checked="" type="checkbox"/> Yes <input type="checkbox"/> No <input type="checkbox"/> Not Required (if site fully fenced)	
Pit Slopes intact	<input checked="" type="checkbox"/> Yes <input type="checkbox"/> No	
Adequate freeboard (liquid level 2 vertical feet from berm top)	<input checked="" type="checkbox"/> Yes <input type="checkbox"/> No <input type="checkbox"/> Not Applicable	
Free oil or sheen present on pit	<input type="checkbox"/> Yes <input checked="" type="checkbox"/> No	
Flare Pit free of liquids	<input checked="" type="checkbox"/> Yes <input type="checkbox"/> No <input type="checkbox"/> Not Applicable	
Comment:		
Inspector Signature: HARMON COCKRELL		
Printed Name: HARMON COCKRELL		
Title: DRILLING CONSULTANT (T.D.C.I.)		
Date: 9/7/2009		Phone: (505) 486-1935

Record Retention. Submit with Closure  
 File: EH&S

Exploration & Production  
 San Juan Basin Operations  
 720 So. Main / PO Box 640  
 Aztec, NM 87410  
 505-634-4200 / 505-634-4205 fax



**Temporary Pit Inspection**

**FACILITY INFORMATION**

<b>Facility Name: Rosa Unit #169-D</b>	<b>API #: 30-039-30755</b>
--	----------------------------

<b>Pit Type:</b> <input checked="" type="checkbox"/> Drilling <input type="checkbox"/> Workover <input type="checkbox"/> Cavitation	<b>Inspection:</b> <input checked="" type="checkbox"/> Daily <input type="checkbox"/> Weekly <input type="checkbox"/> Monthly
---	---

Pit Liner intact (no visible tears)	<input checked="" type="checkbox"/> Yes <input type="checkbox"/> No If No, Report to EH&S immediately	Date / Time Reported:
Pit Properly Fenced (no fence on rig side if on site)	<input checked="" type="checkbox"/> Yes <input type="checkbox"/> No <input type="checkbox"/> Not Required (if site fully fenced)	
Pit Slopes intact	<input checked="" type="checkbox"/> Yes <input type="checkbox"/> No	
Adequate freeboard (liquid level 2 vertical feet from berm top)	<input checked="" type="checkbox"/> Yes <input type="checkbox"/> No <input type="checkbox"/> Not Applicable	
Free oil or sheen present on pit	<input type="checkbox"/> Yes <input checked="" type="checkbox"/> No	
Flare Pit free of liquids	<input checked="" type="checkbox"/> Yes <input type="checkbox"/> No <input type="checkbox"/> Not Applicable	
Comment:		
Inspector Signature: HARMON COCKRELL		
Printed Name: HARMON COCKRELL		
Title: DRILLING CONSULTANT (T.D.C.I.)		
Date: 9/8/2009	Phone: (505) 486-1935	

Record Retention: Submit with Closure  
 File. EH&S

Exploration & Production  
 San Juan Basin Operations  
 720 So. Main / PO Box 640  
 Aztec, NM 87410  
 505-634-4200 / 505-634-4205 fax



**Temporary Pit Inspection**

**FACILITY INFORMATION**

<b>Facility Name: Rosa Unit #169-D</b>	<b>API #: 30-039-30755</b>
--	----------------------------

<b>Pit Type:</b> <input checked="" type="checkbox"/> Drilling <input type="checkbox"/> Workover <input type="checkbox"/> Cavitation	<b>Inspection:</b> <input checked="" type="checkbox"/> Daily <input type="checkbox"/> Weekly <input type="checkbox"/> Monthly
---	---

Pit Liner intact (no visible tears)	<input checked="" type="checkbox"/> Yes <input type="checkbox"/> No If No, Report to EH&S immediately	Date / Time Reported:
Pit Properly Fenced (no fence on rig side if on site)	<input checked="" type="checkbox"/> Yes <input type="checkbox"/> No <input type="checkbox"/> Not Required (if site fully fenced)	
Pit Slopes intact	<input checked="" type="checkbox"/> Yes <input type="checkbox"/> No	
Adequate freeboard (liquid level 2 vertical feet from berm top)	<input checked="" type="checkbox"/> Yes <input type="checkbox"/> No <input type="checkbox"/> Not Applicable	
Free oil or sheen present on pit	<input type="checkbox"/> Yes <input checked="" type="checkbox"/> No	
Flare Pit free of liquids	<input checked="" type="checkbox"/> Yes <input type="checkbox"/> No <input type="checkbox"/> Not Applicable	

Comment:

Inspector Signature: HARMON COCKRELL

Printed Name: HARMON COCKRELL

Title: DRILLING CONSULTANT (T.D.C.I.)

Date: 9/9/2009 Phone: (505) 486-1935

Record Retention: Submit with Closure  
 File: EH&S



Exploration & Production  
 San Juan Basin Operations  
 720 So. Main / PO Box 640  
 Aztec, NM 87410  
 505-634-4200 / 505-634-4205 fax



**Temporary Pit Inspection**

**FACILITY INFORMATION**

<b>Facility Name: Rosa Unit #169-D</b>	<b>API #: 30-039-30755</b>
--	----------------------------

<b>Pit Type:</b> <input checked="" type="checkbox"/> Drilling <input type="checkbox"/> Workover <input type="checkbox"/> Cavitation	<b>Inspection:</b> <input checked="" type="checkbox"/> Daily <input type="checkbox"/> Weekly <input type="checkbox"/> Monthly
---	---

Pit Liner intact (no visible tears)	<input checked="" type="checkbox"/> Yes <input type="checkbox"/> No If No, Report to EH&S immediately	Date / Time Reported:
Pit Properly Fenced (no fence on rig side if on site)	<input checked="" type="checkbox"/> Yes <input type="checkbox"/> No <input type="checkbox"/> Not Required (if site fully fenced)	
Pit Slopes intact	<input checked="" type="checkbox"/> Yes <input type="checkbox"/> No	
Adequate freeboard (liquid level 2 vertical feet from berm top)	<input checked="" type="checkbox"/> Yes <input type="checkbox"/> No <input type="checkbox"/> Not Applicable	
Free oil or sheen present on pit	<input type="checkbox"/> Yes <input checked="" type="checkbox"/> No	
Flare Pit free of liquids	<input checked="" type="checkbox"/> Yes <input type="checkbox"/> No <input type="checkbox"/> Not Applicable	
Comment:		
Inspector Signature: HARMON COCKRELL		
Printed Name: HARMON COCKRELL		
Title: DRILLING CONSULTANT (T.D.C.I.)		
Date: 9/10/2009		Phone: (505) 486-1935

Record Retention: Submit with Closure  
 File: EH&S

Exploration & Production  
 San Juan Basin Operations  
 720 So. Main / PO Box 640  
 Aztec, NM 87410  
 505-634-4200 / 505-634-4205 fax



**Temporary Pit Inspection**

**FACILITY INFORMATION**

<b>Facility Name: Rosa Unit #169-D</b>	<b>API #: 30-039-30755</b>
--	----------------------------

<b>Pit Type:</b> <input checked="" type="checkbox"/> Drilling <input type="checkbox"/> Workover <input type="checkbox"/> Cavitation	<b>Inspection:</b> <input checked="" type="checkbox"/> Daily <input type="checkbox"/> Weekly <input type="checkbox"/> Monthly
---	---

Pit Liner intact (no visible tears)	<input checked="" type="checkbox"/> Yes <input type="checkbox"/> No If No, Report to EH&S immediately	Date / Time Reported:
Pit Properly Fenced (no fence on rig side if on site)	<input checked="" type="checkbox"/> Yes <input type="checkbox"/> No <input type="checkbox"/> Not Required (if site fully fenced)	
Pit Slopes intact	<input checked="" type="checkbox"/> Yes <input type="checkbox"/> No	
Adequate freeboard (liquid level 2 vertical feet from berm top)	<input checked="" type="checkbox"/> Yes <input type="checkbox"/> No <input type="checkbox"/> Not Applicable	
Free oil or sheen present on pit	<input type="checkbox"/> Yes <input checked="" type="checkbox"/> No	
Flare Pit free of liquids	<input checked="" type="checkbox"/> Yes <input type="checkbox"/> No <input type="checkbox"/> Not Applicable	

Comment:

Inspector Signature: WILLIE MOCK

Printed Name: WILLIE MOCK

Title: DRILLING CONSULTANT (T.D.C.I.)

Date: 9/11/2009 Phone: (505) 793-1276

Record Retention. Submit with Closure  
 File: EH&S

Exploration & Production  
 San Juan Basin Operations  
 720 So. Main / PO Box 640  
 Aztec, NM 87410  
 505-634-4200 / 505-634-4205 fax



**Temporary Pit Inspection**

**FACILITY INFORMATION**

<b>Facility Name: Rosa Unit #169-D</b>	<b>API #: 30-039-30755</b>
--	----------------------------

<b>Pit Type:</b> <input checked="" type="checkbox"/> Drilling <input type="checkbox"/> Workover <input type="checkbox"/> Cavitation	<b>Inspection:</b> <input checked="" type="checkbox"/> Daily <input type="checkbox"/> Weekly <input type="checkbox"/> Monthly
---	---

Pit Liner intact (no visible tears)	<input checked="" type="checkbox"/> Yes <input type="checkbox"/> No If No, Report to EH&S immediately	Date / Time Reported:
Pit Properly Fenced (no fence on rig side if on site)	<input checked="" type="checkbox"/> Yes <input type="checkbox"/> No <input type="checkbox"/> Not Required (if site fully fenced)	
Pit Slopes intact	<input checked="" type="checkbox"/> Yes <input type="checkbox"/> No	
Adequate freeboard (liquid level 2 vertical feet from berm top)	<input checked="" type="checkbox"/> Yes <input type="checkbox"/> No <input type="checkbox"/> Not Applicable	
Free oil or sheen present on pit	<input type="checkbox"/> Yes <input checked="" type="checkbox"/> No	
Flare Pit free of liquids	<input checked="" type="checkbox"/> Yes <input type="checkbox"/> No <input type="checkbox"/> Not Applicable	
Comment:		
Inspector Signature: WILLIE MOCK		
Printed Name: WILLIE MOCK		
Title: DRILLING CONSULTANT (T.D.C.I.)		
Date: 9/12/2009		Phone: (505) 793-1276

Record Retention. Submit with Closure  
 File. EH&S

Exploration & Production  
 San Juan Basin Operations  
 720 So. Main / PO Box 640  
 Aztec, NM 87410  
 505-634-4200 / 505-634-4205 fax



**Temporary Pit Inspection**

**FACILITY INFORMATION**

<b>Facility Name: Rosa Unit #169-D</b>	<b>API #: 30-039-30755</b>
--	----------------------------

<b>Pit Type:</b> <input checked="" type="checkbox"/> Drilling <input type="checkbox"/> Workover <input type="checkbox"/> Cavitation	<b>Inspection:</b> <input checked="" type="checkbox"/> Daily <input type="checkbox"/> Weekly <input type="checkbox"/> Monthly
---	---

Pit Liner intact (no visible tears)	<input checked="" type="checkbox"/> Yes <input type="checkbox"/> No If No, Report to EH&S immediately	Date / Time Reported:
Pit Property Fenced (no fence on rig side if on site)	<input checked="" type="checkbox"/> Yes <input type="checkbox"/> No <input type="checkbox"/> Not Required (if site fully fenced)	
Pit Slopes intact	<input checked="" type="checkbox"/> Yes <input type="checkbox"/> No	
Adequate freeboard (liquid level 2 <u>vertical</u> feet from berm top)	<input checked="" type="checkbox"/> Yes <input type="checkbox"/> No <input type="checkbox"/> Not Applicable	
Free oil or sheen present on pit	<input type="checkbox"/> Yes <input checked="" type="checkbox"/> No	
Flare Pit free of liquids	<input checked="" type="checkbox"/> Yes <input type="checkbox"/> No <input type="checkbox"/> Not Applicable	
Comment:		
Inspector Signature: WILLIE MOCK		
Printed Name: WILLIE MOCK		
Title: DRILLING CONSULTANT (T.D.C.I.)		
Date: 9/13/2009	Phone: (505) 793-1276	

Record Retention: Submit with Closure  
 File: EH&S

Exploration & Production  
 San Juan Basin Operations  
 720 So. Main / PO Box 640  
 Aztec, NM 87410  
 505-634-4200 / 505-634-4205 fax



**Temporary Pit Inspection**

**FACILITY INFORMATION**

<b>Facility Name: Rosa Unit #169-D</b>	<b>API #: 30-039-30755</b>
--	----------------------------

<b>Pit Type:</b> <input checked="" type="checkbox"/> Drilling <input type="checkbox"/> Workover <input type="checkbox"/> Cavitation	<b>Inspection:</b> <input checked="" type="checkbox"/> Daily <input type="checkbox"/> Weekly <input type="checkbox"/> Monthly
---	---

Pit Liner intact (no visible tears)	<input checked="" type="checkbox"/> Yes <input type="checkbox"/> No If No, Report to EH&S immediately	Date / Time Reported:
Pit Properly Fenced (no fence on rig side if on site)	<input checked="" type="checkbox"/> Yes <input type="checkbox"/> No <input type="checkbox"/> Not Required (if site fully fenced)	
Pit Slopes intact	<input checked="" type="checkbox"/> Yes <input type="checkbox"/> No	
Adequate freeboard (liquid level 2 <u>vertical</u> feet from berm top)	<input checked="" type="checkbox"/> Yes <input type="checkbox"/> No <input type="checkbox"/> Not Applicable	
Free oil or sheen present on pit	<input type="checkbox"/> Yes <input checked="" type="checkbox"/> No	
Flare Pit free of liquids	<input checked="" type="checkbox"/> Yes <input type="checkbox"/> No <input type="checkbox"/> Not Applicable	
Comment:		
Inspector Signature: HARMON COCKRELL		
Printed Name: HARMON COCKRELL		
Title: DRILLING CONSULTANT (T.D.C.I.)		
Date: 8/24/2009	Phone: (505) 486-1935	

Record Retention: Submit with Closure  
 File: EH&S

Exploration & Production  
 San Juan Basin Operations  
 720 So. Main / PO Box 640  
 Aztec, NM 87410  
 505-634-4200 / 505-634-4205 fax



**Temporary Pit Inspection**

**FACILITY INFORMATION**

<b>Facility Name: Rosa Unit #169-D</b>	<b>API #: 30-039-30755</b>
--	----------------------------

<b>Pit Type:</b> <input checked="" type="checkbox"/> Drilling <input type="checkbox"/> Workover <input type="checkbox"/> Cavitation	<b>Inspection:</b> <input checked="" type="checkbox"/> Daily <input type="checkbox"/> Weekly <input type="checkbox"/> Monthly
---	---

Pit Liner intact (no visible tears)	<input checked="" type="checkbox"/> Yes <input type="checkbox"/> No If No, Report to EH&S immediately	Date / Time Reported:
Pit Properly Fenced (no fence on rig side if on site)	<input checked="" type="checkbox"/> Yes <input type="checkbox"/> No <input type="checkbox"/> Not Required (if site fully fenced)	
Pit Slopes intact	<input checked="" type="checkbox"/> Yes <input type="checkbox"/> No	
Adequate freeboard (liquid level 2 vertical feet from berm top)	<input checked="" type="checkbox"/> Yes <input type="checkbox"/> No <input type="checkbox"/> Not Applicable	
Free oil or sheen present on pit	<input type="checkbox"/> Yes <input checked="" type="checkbox"/> No	
Flare Pit free of liquids	<input checked="" type="checkbox"/> Yes <input type="checkbox"/> No <input type="checkbox"/> Not Applicable	
Comment:		
Inspector Signature: HARMON COCKRELL		
Printed Name: HARMON COCKRELL		
Title: DRILLING CONSULTANT (T.D.C.I.)		
Date: 8/25/2009	Phone: (505) 486-1935	

Record Retention: Submit with Closure  
 File EH&S

Exploration & Production  
 San Juan Basin Operations  
 720 So. Main / PO Box 640  
 Aztec, NM 87410  
 505-634-4200 / 505-634-4205 fax



**Temporary Pit Inspection**

**FACILITY INFORMATION**

<b>Facility Name: Rosa Unit #169-D</b>	<b>API #: 30-039-30755</b>
--	----------------------------

<b>Pit Type:</b> <input checked="" type="checkbox"/> Drilling <input type="checkbox"/> Workover <input type="checkbox"/> Cavitation	<b>Inspection:</b> <input checked="" type="checkbox"/> Daily <input type="checkbox"/> Weekly <input type="checkbox"/> Monthly
---	---

Pit Liner intact (no visible tears)	<input checked="" type="checkbox"/> Yes <input type="checkbox"/> No If No, Report to EH&S immediately	Date / Time Reported:
Pit Properly Fenced (no fence on rig side if on site)	<input checked="" type="checkbox"/> Yes <input type="checkbox"/> No <input type="checkbox"/> Not Required (if site fully fenced)	
Pit Slopes intact	<input checked="" type="checkbox"/> Yes <input type="checkbox"/> No	
Adequate freeboard (liquid level 2 vertical feet from berm top)	<input checked="" type="checkbox"/> Yes <input type="checkbox"/> No <input type="checkbox"/> Not Applicable	
Free oil or sheen present on pit	<input type="checkbox"/> Yes <input checked="" type="checkbox"/> No	
Flare Pit free of liquids	<input checked="" type="checkbox"/> Yes <input type="checkbox"/> No <input type="checkbox"/> Not Applicable	
Comment:		
Inspector Signature: HARMON COCKRELL		
Printed Name: HARMON COCKRELL		
Title: DRILLING CONSULTANT (T.D.C.I.)		
Date: 8/26/2009	Phone: (505) 486-1935	

Record Retention: Submit with Closure  
 File: EH&S

Exploration & Production  
 San Juan Basin Operations  
 720 So. Main / PO Box 640  
 Aztec, NM 87410  
 505-634-4200 / 505-634-4205 fax



**Temporary Pit Inspection**

**FACILITY INFORMATION**

<b>Facility Name: Rosa Unit #169-D</b>	<b>API #: 30-039-30755</b>
--	----------------------------

<b>Pit Type:</b> <input checked="" type="checkbox"/> Drilling <input type="checkbox"/> Workover <input type="checkbox"/> Cavitation	<b>Inspection:</b> <input checked="" type="checkbox"/> Daily <input type="checkbox"/> Weekly <input type="checkbox"/> Monthly
---	---

Pit Liner intact (no visible tears)	<input checked="" type="checkbox"/> Yes <input type="checkbox"/> No If No, Report to EH&S immediately	Date / Time Reported:
Pit Properly Fenced (no fence on rig side if on site)	<input checked="" type="checkbox"/> Yes <input type="checkbox"/> No <input type="checkbox"/> Not Required (if site fully fenced)	
Pit Slopes intact	<input checked="" type="checkbox"/> Yes <input type="checkbox"/> No	
Adequate freeboard (liquid level 2 vertical feet from berm top)	<input checked="" type="checkbox"/> Yes <input type="checkbox"/> No <input type="checkbox"/> Not Applicable	
Free oil or sheen present on pit	<input type="checkbox"/> Yes <input checked="" type="checkbox"/> No	
Flare Pit free of liquids	<input checked="" type="checkbox"/> Yes <input type="checkbox"/> No <input type="checkbox"/> Not Applicable	

Comment:

Inspector Signature: HARMON COCKRELL

Printed Name: HARMON COCKRELL

Title: DRILLING CONSULTANT (T.D.C.I.)

Date: 8/27/2009 Phone: (505) 486-1935

Record Retention: Submit with Closure  
 File: EH&S



Exploration & Production  
 San Juan Basin Operations  
 720 So. Main / PO Box 640  
 Aztec, NM 87410  
 505-634-4200 / 505-634-4205 fax



**Temporary Pit Inspection**

**FACILITY INFORMATION**

<b>Facility Name:</b> Rosa Unit #169-D	<b>API #:</b> 30-039-30755
--	----------------------------

<b>Pit Type:</b> <input checked="" type="checkbox"/> Drilling <input type="checkbox"/> Workover <input type="checkbox"/> Cavitation	<b>Inspection:</b> <input checked="" type="checkbox"/> Daily <input type="checkbox"/> Weekly <input type="checkbox"/> Monthly
---	---

Pit Liner intact (no visible tears)	<input checked="" type="checkbox"/> Yes <input type="checkbox"/> No If No, Report to EH&S immediately	Date / Time Reported:
Pit Properly Fenced (no fence on rig side if on site)	<input checked="" type="checkbox"/> Yes <input type="checkbox"/> No <input type="checkbox"/> Not Required (if site fully fenced)	
Pit Slopes intact	<input checked="" type="checkbox"/> Yes <input type="checkbox"/> No	
Adequate freeboard (liquid level 2 vertical feet from berm top)	<input checked="" type="checkbox"/> Yes <input type="checkbox"/> No <input type="checkbox"/> Not Applicable	
Free oil or sheen present on pit	<input type="checkbox"/> Yes <input checked="" type="checkbox"/> No	
Flare Pit free of liquids	<input checked="" type="checkbox"/> Yes <input type="checkbox"/> No <input type="checkbox"/> Not Applicable	
Comment:		
Inspector Signature: HARMON COCKRELL		
Printed Name: HARMON COCKRELL		
Title: DRILLING CONSULTANT (T.D.C.I.)		
Date: 8/28/2009	Phone: (505) 486-1935	

Record Retention Submit with Closure  
 File: EH&S

Exploration & Production  
 San Juan Basin Operations  
 720 So. Main / PO Box 640  
 Aztec, NM 87410  
 505-634-4200 / 505-634-4205 fax



**Temporary Pit Inspection**

**FACILITY INFORMATION**

<b>Facility Name: Rosa Unit #169-D</b>	<b>API #: 30-039-30755</b>
--	----------------------------

<b>Pit Type:</b> <input checked="" type="checkbox"/> Drilling <input type="checkbox"/> Workover <input type="checkbox"/> Cavitation	<b>Inspection:</b> <input checked="" type="checkbox"/> Daily <input type="checkbox"/> Weekly <input type="checkbox"/> Monthly
---	---

Pit Liner intact (no visible tears)	<input checked="" type="checkbox"/> Yes <input type="checkbox"/> No If No, Report to EH&S immediately	Date / Time Reported:
Pit Properly Fenced (no fence on rig side if on site)	<input checked="" type="checkbox"/> Yes <input type="checkbox"/> No <input type="checkbox"/> Not Required (if site fully fenced)	
Pit Slopes intact	<input checked="" type="checkbox"/> Yes <input type="checkbox"/> No	
Adequate freeboard (liquid level 2 vertical feet from berm top)	<input checked="" type="checkbox"/> Yes <input type="checkbox"/> No <input type="checkbox"/> Not Applicable	
Free oil or sheen present on pit	<input type="checkbox"/> Yes <input checked="" type="checkbox"/> No	
Flare Pit free of liquids	<input checked="" type="checkbox"/> Yes <input type="checkbox"/> No <input type="checkbox"/> Not Applicable	
Comment:		
Inspector Signature: HARMON COCKRELL		
Printed Name: HARMON COCKRELL		
Title: DRILLING CONSULTANT (T.D.C.I.)		
Date: 8/29/2009	Phone: (505) 486-1935	

Record Retention. Submit with Closure  
 File: EH&S

Exploration & Production  
 San Juan Basin Operations  
 720 So. Main / PO Box 640  
 Aztec, NM 87410  
 505-634-4200 / 505-634-4205 fax



**Temporary Pit Inspection**

**FACILITY INFORMATION**

<b>Facility Name: Rosa Unit #169-D</b>	<b>API #: 30-039-30755</b>
--	----------------------------

<b>Pit Type:</b> <input checked="" type="checkbox"/> Drilling <input type="checkbox"/> Workover <input type="checkbox"/> Cavitation	<b>Inspection:</b> <input checked="" type="checkbox"/> Daily <input type="checkbox"/> Weekly <input type="checkbox"/> Monthly
---	---

Pit Liner intact (no visible tears)	<input checked="" type="checkbox"/> Yes <input type="checkbox"/> No If No, Report to EH&S immediately	Date / Time Reported:
Pit Properly Fenced (no fence on rig side if on site)	<input checked="" type="checkbox"/> Yes <input type="checkbox"/> No <input type="checkbox"/> Not Required (if site fully fenced)	
Pit Slopes intact	<input checked="" type="checkbox"/> Yes <input type="checkbox"/> No	
Adequate freeboard (liquid level 2 vertical feet from berm top)	<input checked="" type="checkbox"/> Yes <input type="checkbox"/> No <input type="checkbox"/> Not Applicable	
Free oil or sheen present on pit	<input type="checkbox"/> Yes <input checked="" type="checkbox"/> No	
Flare Pit free of liquids	<input checked="" type="checkbox"/> Yes <input type="checkbox"/> No <input type="checkbox"/> Not Applicable	

Comment:

Inspector Signature: HARMON COCKRELL

Printed Name: HARMON COCKRELL

Title: DRILLING CONSULTANT (T.D.C.I.)

Date: 8/30/2009

Phone: (505) 486-1935

Record Retention: Submit with Closure  
 File: EH&S

Exploration & Production  
 San Juan Basin Operations  
 720 So. Main / PO Box 640  
 Aztec, NM 87410  
 505-634-4200 / 505-634-4205 fax



**Temporary Pit Inspection**

**FACILITY INFORMATION**

<b>Facility Name:</b> Rosa#169D	<b>API #:</b> 30-039-30755

<b>Pit Type:</b> <input checked="" type="checkbox"/> Drilling <input type="checkbox"/> Workover <input type="checkbox"/> Cavitation	<b>Inspection:</b> <input type="checkbox"/> Daily (Rig) <input checked="" type="checkbox"/> Weekly (Tech)
--	---

Pit Liner intact (no visible tears)	<input checked="" type="checkbox"/> Yes <input type="checkbox"/> No If No, Report to EH&S immediately	Date / Time Reported to EH&S:
Pit Properly Fenced (no fence on rig side if on site)	<input checked="" type="checkbox"/> Yes <input type="checkbox"/> No <input type="checkbox"/> Not Required (if site fully fenced)	
Pit Slopes intact	<input checked="" type="checkbox"/> Yes <input type="checkbox"/> No	
Adequate freeboard (liquid level 2 vertical feet from berm top)	<input checked="" type="checkbox"/> Yes <input type="checkbox"/> No <input type="checkbox"/> Not Applicable	
Does pit have oil or sheen on it?	<input type="checkbox"/> Yes <input checked="" type="checkbox"/> No	
Flare Pit free of liquids	<input checked="" type="checkbox"/> Yes <input type="checkbox"/> No <input type="checkbox"/> Not Applicable	
Comments: Liquid is approaching 2ft of top of berm		
Inspector Signature: Dwayne Miller		
Printed Name: Dwayne Miller		
Title: Tech		
Date: 3-30-2010		Phone: (505)320-7737

Record Retention: Submit with Closure  
 File. EH&S Well Files

Exploration & Production  
 San Juan Basin Operations  
 720 So. Main / PO Box 640  
 Aztec, NM 87410  
 505-634-4200 / 505-634-4205 fax



**Temporary Pit Inspection**

**FACILITY INFORMATION**

<b>Facility Name: Rosa#169D</b>	<b>API #: 30-039-30755</b>

<b>Pit Type:</b> <input checked="" type="checkbox"/> Drilling <input type="checkbox"/> Workover <input type="checkbox"/> Cavitation	<b>Inspection:</b> <input type="checkbox"/> Daily (Rig) <input checked="" type="checkbox"/> Weekly (Tech)
--	---

Pit Liner intact (no visible tears)	<input checked="" type="checkbox"/> Yes <input type="checkbox"/> No If No, Report to EH&S immediately	Date / Time Reported to EH&S:
Pit Properly Fenced (no fence on rig side if on site)	<input checked="" type="checkbox"/> Yes <input type="checkbox"/> No <input type="checkbox"/> Not Required (if site fully fenced)	
Pit Slopes intact	<input checked="" type="checkbox"/> Yes <input type="checkbox"/> No	
Adequate freeboard (liquid level 2 vertical feet from berm top)	<input checked="" type="checkbox"/> Yes <input type="checkbox"/> No <input type="checkbox"/> Not Applicable	
Does pit have oil or sheen on it?	<input type="checkbox"/> Yes <input checked="" type="checkbox"/> No	
Flare Pit free of liquids	<input checked="" type="checkbox"/> Yes <input type="checkbox"/> No <input type="checkbox"/> Not Applicable	

Comments: Liquid is approaching 2ft of top of berm		
Inspector Signature: Dwayne Miller		
Printed Name: Dwayne Miller		
Title: Tech		
Date: 4-8-2010	Phone: (505)320-7737	

Record Retention: Submit with Closure  
 File: EH&S Well Files

Exploration & Production  
 San Juan Basin Operations  
 720 So. Main / PO Box 640  
 Aztec, NM 87410  
 505-634-4200 / 505-634-4205 fax



**Temporary Pit Inspection**

**FACILITY INFORMATION**

<b>Facility Name: Rosa#169D</b>	<b>API #: 30-039-30755</b>

<b>Pit Type:</b> x <input type="checkbox"/> Drilling <input type="checkbox"/> Workover <input type="checkbox"/> Cavitation	<b>Inspection:</b> <input type="checkbox"/> Daily (Rig) x <input type="checkbox"/> Weekly (Tech)
---	--

Pit Liner intact (no visible tears)	x <input type="checkbox"/> Yes <input type="checkbox"/> No If No, Report to EH&S immediately	Date / Time Reported to EH&S:
Pit Properly Fenced (no fence on rig side if on site)	x <input type="checkbox"/> Yes <input type="checkbox"/> No <input type="checkbox"/> Not Required (if site fully fenced)	
Pit Slopes intact	x <input type="checkbox"/> Yes <input type="checkbox"/> No	
Adequate freeboard (liquid level 2 vertical feet from berm top)	x <input type="checkbox"/> Yes <input type="checkbox"/> No <input type="checkbox"/> Not Applicable	
Does pit have oil or sheen on it?	<input type="checkbox"/> Yes x <input type="checkbox"/> No	
Flare Pit free of liquids	x <input type="checkbox"/> Yes <input type="checkbox"/> No <input type="checkbox"/> Not Applicable	

Comments:		
Inspector Signature: Dwayne Miller		
Printed Name: Dwayne Miller		
Title: Tech		
Date: 4-16-2010	Phone: (505)320-7737	

Record Retention: Submit with Closure  
 File. EH&S Well Files

Exploration & Production  
 San Juan Basin Operations  
 720 So. Main / PO Box 640  
 Aztec, NM 87410  
 505-634-4200 / 505-634-4205 fax



**Temporary Pit Inspection**

**FACILITY INFORMATION**

<b>Facility Name: Rosa#169D</b>	<b>API #: 30-039-30755</b>

<b>Pit Type:</b> <input checked="" type="checkbox"/> Drilling <input type="checkbox"/> Workover <input type="checkbox"/> Cavitation	<b>Inspection:</b> <input type="checkbox"/> Daily (Rig) <input checked="" type="checkbox"/> Weekly (Tech)
--	---

Pit Liner intact (no visible tears)	<input checked="" type="checkbox"/> Yes <input type="checkbox"/> No If No, Report to EH&S immediately	Date / Time Reported to EH&S:
Pit Properly Fenced (no fence on rig side if on site)	<input checked="" type="checkbox"/> Yes <input type="checkbox"/> No <input type="checkbox"/> Not Required (if site fully fenced)	
Pit Slopes intact	<input checked="" type="checkbox"/> Yes <input type="checkbox"/> No	
Adequate freeboard (liquid level 2 vertical feet from berm top)	<input checked="" type="checkbox"/> Yes <input type="checkbox"/> No <input type="checkbox"/> Not Applicable	
Does pit have oil or sheen on it?	<input type="checkbox"/> Yes <input checked="" type="checkbox"/> No	
Flare Pit free of liquids	<input checked="" type="checkbox"/> Yes <input type="checkbox"/> No <input type="checkbox"/> Not Applicable	

Comments:

Inspector Signature: Dwayne Miller	
Printed Name: Dwayne Miller	
Title: Tech	
Date: 4-23-2010	Phone: (505)320-7737

Record Retention Submit with Closure  
 File EH&S Well Files

Exploration & Production  
 San Juan Basin Operations  
 720 So. Main / PO Box 640  
 Aztec, NM 87410  
 505-634-4200 / 505-634-4205 fax



**Temporary Pit Inspection**

**FACILITY INFORMATION**

<b>Facility Name:</b> Rosa#169D	<b>API #:</b> 30-039-30755

<b>Pit Type:</b> <input checked="" type="checkbox"/> Drilling <input type="checkbox"/> Workover <input type="checkbox"/> Cavitation	<b>Inspection:</b> <input type="checkbox"/> Daily (Rig) <input checked="" type="checkbox"/> Weekly (Tech)
---	---

Pit Liner intact (no visible tears)	<input checked="" type="checkbox"/> Yes <input type="checkbox"/> No If No, Report to EH&S immediately	Date / Time Reported to EH&S:
Pit Properly Fenced (no fence on rig side if on site)	<input checked="" type="checkbox"/> Yes <input type="checkbox"/> No <input type="checkbox"/> Not Required (if site fully fenced)	
Pit Slopes intact	<input checked="" type="checkbox"/> Yes <input type="checkbox"/> No	
Adequate freeboard (liquid level 2 vertical feet from berm top)	<input checked="" type="checkbox"/> Yes <input type="checkbox"/> No <input type="checkbox"/> Not Applicable	
Does pit have oil or sheen on it?	<input type="checkbox"/> Yes <input checked="" type="checkbox"/> No	
Flare Pit free of liquids	<input checked="" type="checkbox"/> Yes <input type="checkbox"/> No <input type="checkbox"/> Not Applicable	

Comments:

Inspector Signature: Dwayne Miller

Printed Name: Dwayne Miller

Title: Tech

Date: 5-07-2010 Phone: (505)320-7737

Record Retention Submit with Closure  
 File: EH&S Well Files



Exploration & Production  
 San Juan Basin Operations  
 720 So. Main / PO Box 640  
 Aztec, NM 87410  
 505-634-4200 / 505-634-4205 fax



**Temporary Pit Inspection**

**FACILITY INFORMATION**

<b>Facility Name:</b> Rosa#169D	<b>API #:</b> 30-039-30755

<b>Pit Type:</b> <input checked="" type="checkbox"/> Drilling <input type="checkbox"/> Workover <input type="checkbox"/> Cavitation	<b>Inspection:</b> <input type="checkbox"/> Daily (Rig) <input checked="" type="checkbox"/> Weekly (Tech)
--	---

Pit Liner intact (no visible tears)	<input checked="" type="checkbox"/> Yes <input type="checkbox"/> No If No, Report to EH&S immediately	Date / Time Reported to EH&S:
Pit Properly Fenced (no fence on rig side if on site)	<input checked="" type="checkbox"/> Yes <input type="checkbox"/> No <input type="checkbox"/> Not Required (if site fully fenced)	
Pit Slopes intact	<input checked="" type="checkbox"/> Yes <input type="checkbox"/> No	
Adequate freeboard (liquid level 2 vertical feet from berm top)	<input checked="" type="checkbox"/> Yes <input type="checkbox"/> No <input type="checkbox"/> Not Applicable	
Does pit have oil or sheen on it?	<input type="checkbox"/> Yes <input checked="" type="checkbox"/> No	
Flare Pit free of liquids	<input checked="" type="checkbox"/> Yes <input type="checkbox"/> No <input type="checkbox"/> Not Applicable	

Comments:

Inspector Signature: Dwayne Miller

Printed Name: Dwayne Miller

Title: Tech

Date: 5-21-2010 Phone: (505)320-7737

Record Retention. Submit with Closure  
 File. EH&S Well Files

Exploration & Production  
 San Juan Basin Operations  
 720 So. Main / PO Box 640  
 Aztec, NM 87410  
 505-634-4200 / 505-634-4205 fax



**Temporary Pit Inspection**

**FACILITY INFORMATION**

<b>Facility Name: Rosa#169D</b>	<b>API #: 30-039-30755</b>

<b>Pit Type:</b> <input checked="" type="checkbox"/> Drilling <input type="checkbox"/> Workover <input type="checkbox"/> Cavitation	<b>Inspection:</b> <input type="checkbox"/> Daily (Rig) <input checked="" type="checkbox"/> Weekly (Tech)
---	---

Pit Liner intact (no visible tears)	<input checked="" type="checkbox"/> Yes <input type="checkbox"/> No If No, Report to EH&S immediately	Date / Time Reported to EH&S:
Pit Properly Fenced (no fence on rig side if on site)	<input checked="" type="checkbox"/> Yes <input type="checkbox"/> No <input type="checkbox"/> Not Required (if site fully fenced)	
Pit Slopes intact	<input checked="" type="checkbox"/> Yes <input type="checkbox"/> No	
Adequate freeboard (liquid level 2 vertical feet from berm top)	<input checked="" type="checkbox"/> Yes <input type="checkbox"/> No <input type="checkbox"/> Not Applicable	
Does pit have oil or sheen on it?	<input type="checkbox"/> Yes <input checked="" type="checkbox"/> No	
Flare Pit free of liquids	<input checked="" type="checkbox"/> Yes <input type="checkbox"/> No <input type="checkbox"/> Not Applicable	

Comments:

Inspector Signature: Dwayne Miller

Printed Name: Dwayne Miller

Title: Tech

Date: 5-14-2010 Phone: (505)320-7737

Record Retention Submit with Closure  
 File: EH&S Well Files

Exploration & Production  
 San Juan Basin Operations  
 720 So. Main / PO Box 640  
 Aztec, NM 87410  
 505-634-4200 / 505-634-4205 fax



**Temporary Pit Inspection**

**FACILITY INFORMATION**

<b>Facility Name: Rosa#169D</b>	<b>API #: 30-039-30755</b>

<b>Pit Type:</b> x <input type="checkbox"/> Drilling <input type="checkbox"/> Workover <input type="checkbox"/> Cavitation	<b>Inspection:</b> <input type="checkbox"/> Daily (Rig) x <input checked="" type="checkbox"/> Weekly (Tech)
---	---

Pit Liner intact (no visible tears)	x <input type="checkbox"/> Yes <input type="checkbox"/> No If No, Report to EH&S immediately	Date / Time Reported to EH&S:
Pit Properly Fenced (no fence on rig side if on site)	x <input type="checkbox"/> Yes <input type="checkbox"/> No <input type="checkbox"/> Not Required (if site fully fenced)	
Pit Slopes intact	x <input type="checkbox"/> Yes <input type="checkbox"/> No	
Adequate freeboard (liquid level 2 vertical feet from berm top)	x <input type="checkbox"/> Yes <input type="checkbox"/> No <input type="checkbox"/> Not Applicable	
Does pit have oil or sheen on it?	<input type="checkbox"/> Yes x <input checked="" type="checkbox"/> No	
Flare Pit free of liquids	x <input type="checkbox"/> Yes <input type="checkbox"/> No <input type="checkbox"/> Not Applicable	

Comments:		
Inspector Signature: Dwayne Miller		
Printed Name: Dwayne Miller		
Title: Tech		
Date: 6-10-2010	Phone: (505)320-7737	

Record Retention: Submit with Closure  
 File EH&S Well Files

Exploration & Production  
 San Juan Basin Operations  
 720 So. Main / PO Box 640  
 Aztec, NM 87410  
 505-634-4200 / 505-634-4205 fax



**Temporary Pit Inspection**

**FACILITY INFORMATION**

<b>Facility Name:</b> Rosa#169D	<b>API #:</b> 30-039-30755

<b>Pit Type:</b> <input checked="" type="checkbox"/> Drilling <input type="checkbox"/> Workover <input type="checkbox"/> Cavitation	<b>Inspection:</b> <input type="checkbox"/> Daily (Rig) <input checked="" type="checkbox"/> Weekly (Tech)
---	---

Pit Liner intact (no visible tears)	<input checked="" type="checkbox"/> Yes <input type="checkbox"/> No If No, Report to EH&S immediately	Date / Time Reported to EH&S:
Pit Properly Fenced (no fence on rig side if on site)	<input checked="" type="checkbox"/> Yes <input type="checkbox"/> No <input type="checkbox"/> Not Required (if site fully fenced)	
Pit Slopes intact	<input checked="" type="checkbox"/> Yes <input type="checkbox"/> No	
Adequate freeboard (liquid level 2 <u>vertical</u> feet from berm top)	<input checked="" type="checkbox"/> Yes <input type="checkbox"/> No <input type="checkbox"/> Not Applicable	
Does pit have oil or sheen on it?	<input type="checkbox"/> Yes <input checked="" type="checkbox"/> No	
Flare Pit free of liquids	<input checked="" type="checkbox"/> Yes <input type="checkbox"/> No <input type="checkbox"/> Not Applicable	

Comments:		
Inspector Signature: Dwayne Miller		
Printed Name: Dwayne Miller		
Title: Tech		
Date: 12-4-09	Phone: (505)320-7737	

Record Retention: Submit with Closure  
 File: EH&S Well Files

Exploration & Production  
 San Juan Basin Operations  
 720 So. Main / PO Box 640  
 Aztec, NM 87410  
 505-634-4200 / 505-634-4205 fax



**Temporary Pit Inspection**

**FACILITY INFORMATION**

<b>Facility Name:</b> Rosa#169D	<b>API #:</b> 30-039-30755

<b>Pit Type:</b> <input checked="" type="checkbox"/> Drilling <input type="checkbox"/> Workover <input type="checkbox"/> Cavitation	<b>Inspection:</b> <input type="checkbox"/> Daily (Rig) <input checked="" type="checkbox"/> Weekly (Tech)
--	---

Pit Liner intact (no visible tears)	<input checked="" type="checkbox"/> Yes <input type="checkbox"/> No If No, Report to EH&S immediately	Date / Time Reported to EH&S:
Pit Properly Fenced (no fence on rig side if on site)	<input checked="" type="checkbox"/> Yes <input type="checkbox"/> No <input type="checkbox"/> Not Required (if site fully fenced)	
Pit Slopes intact	<input checked="" type="checkbox"/> Yes <input type="checkbox"/> No	
Adequate freeboard (liquid level 2 <u>vertical</u> feet from berm top)	<input checked="" type="checkbox"/> Yes <input type="checkbox"/> No <input type="checkbox"/> Not Applicable	
Does pit have oil or sheen on it?	<input type="checkbox"/> Yes <input checked="" type="checkbox"/> No	
Flare Pit free of liquids	<input checked="" type="checkbox"/> Yes <input type="checkbox"/> No <input type="checkbox"/> Not Applicable	

Comments:

Inspector Signature: Dwayne Miller

Printed Name: Dwayne Miller

Title: Tech

Date: 12-11-09 Phone: (505)320-7737

Record Retention: Submit with Closure  
 File: EH&S Well Files

Exploration & Production  
 San Juan Basin Operations  
 720 So. Main / PO Box 640  
 Aztec, NM 87410  
 505-634-4200 / 505-634-4205 fax



**Temporary Pit Inspection**

**FACILITY INFORMATION**

<b>Facility Name:</b> Rosa#169D	<b>API #:</b> 30-039-30755

<b>Pit Type:</b> <input checked="" type="checkbox"/> Drilling <input type="checkbox"/> Workover <input type="checkbox"/> Cavitation	<b>Inspection:</b> <input type="checkbox"/> Daily (Rig) <input checked="" type="checkbox"/> Weekly (Tech)
---	---

Pit Liner intact (no visible tears)	<input checked="" type="checkbox"/> Yes <input type="checkbox"/> No If No, Report to EH&S immediately	Date / Time Reported to EH&S:
Pit Properly Fenced (no fence on rig side if on site)	<input checked="" type="checkbox"/> Yes <input type="checkbox"/> No <input type="checkbox"/> Not Required (if site fully fenced)	
Pit Slopes intact	<input checked="" type="checkbox"/> Yes <input type="checkbox"/> No	
Adequate freeboard (liquid level 2 <u>vertical</u> feet from berm top)	<input checked="" type="checkbox"/> Yes <input type="checkbox"/> No <input type="checkbox"/> Not Applicable	
Does pit have oil or sheen on it?	<input type="checkbox"/> Yes <input checked="" type="checkbox"/> No	
Flare Pit free of liquids	<input checked="" type="checkbox"/> Yes <input type="checkbox"/> No <input type="checkbox"/> Not Applicable	

Comments:

Inspector Signature: Dwayne Miller

Printed Name: Dwayne Miller

Title: Tech

Date: 12-18-09 Phone: (505)320-7737

Record Retention: Submit with Closure  
 File: EH&S Well Files

Exploration & Production  
 San Juan Basin Operations  
 720 So. Main / PO Box 640  
 Aztec, NM 87410  
 505-634-4200 / 505-634-4205 fax



**Temporary Pit Inspection**

**FACILITY INFORMATION**

<b>Facility Name:</b> Rosa#169D	<b>API #:</b> 30-039-30755

<b>Pit Type:</b> <input checked="" type="checkbox"/> Drilling <input type="checkbox"/> Workover <input type="checkbox"/> Cavitation	<b>Inspection:</b> <input type="checkbox"/> Daily (Rig) <input checked="" type="checkbox"/> Weekly (Tech)
--	---

Pit Liner intact (no visible tears)	<input checked="" type="checkbox"/> Yes <input type="checkbox"/> No If No, Report to EH&S immediately	Date / Time Reported to EH&S:
Pit Properly Fenced (no fence on rig side if on site)	<input checked="" type="checkbox"/> Yes <input type="checkbox"/> No <input type="checkbox"/> Not Required (if site fully fenced)	
Pit Slopes intact	<input checked="" type="checkbox"/> Yes <input type="checkbox"/> No	
Adequate freeboard (liquid level 2 vertical feet from berm top)	<input checked="" type="checkbox"/> Yes <input type="checkbox"/> No <input type="checkbox"/> Not Applicable	
Does pit have oil or sheen on it?	<input type="checkbox"/> Yes <input checked="" type="checkbox"/> No	
Flare Pit free of liquids	<input checked="" type="checkbox"/> Yes <input type="checkbox"/> No <input type="checkbox"/> Not Applicable	

Comments:

Inspector Signature: Dwayne Miller

Printed Name: Dwayne Miller

Title: Tech

Date: 12-22-09 Phone: (505)320-7737

Record Retention Submit with Closure  
 File: EH&S Well Files

Exploration & Production  
 San Juan Basin Operations  
 720 So. Main / PO Box 640  
 Aztec, NM 87410  
 505-634-4200 / 505-634-4205 fax



**Temporary Pit Inspection**

**FACILITY INFORMATION**

<b>Facility Name:</b> Rosa#169D	<b>API #:</b> 30-039-30755

<b>Pit Type:</b> x <input type="checkbox"/> Drilling <input type="checkbox"/> Workover <input type="checkbox"/> Cavitation	<b>Inspection:</b> <input type="checkbox"/> Daily (Rig) x <input type="checkbox"/> Weekly (Tech)
---	--

Pit Liner intact (no visible tears)	x <input type="checkbox"/> Yes <input type="checkbox"/> No If No, Report to EH&S immediately	Date / Time Reported to EH&S:
Pit Properly Fenced (no fence on rig side if on site)	x <input type="checkbox"/> Yes <input type="checkbox"/> No <input type="checkbox"/> Not Required (if site fully fenced)	
Pit Slopes intact	x <input type="checkbox"/> Yes <input type="checkbox"/> No	
Adequate freeboard (liquid level 2 vertical feet from berm top)	x <input type="checkbox"/> Yes <input type="checkbox"/> No <input type="checkbox"/> Not Applicable	
Does pit have oil or sheen on it?	<input type="checkbox"/> Yes x <input type="checkbox"/> No	
Flare Pit free of liquids	x <input type="checkbox"/> Yes <input type="checkbox"/> No <input type="checkbox"/> Not Applicable	

Comments:

Inspector Signature: Dwayne Miller

Printed Name: Dwayne Miller

Title: Tech

Date: 12-30-09 Phone: (505)320-7737

Record Retention: Submit with Closure  
 File: EH&S Well Files



Exploration & Production  
 San Juan Basin Operations  
 720 So. Main / PO Box 640  
 Aztec, NM 87410  
 505-634-4200 / 505-634-4205 fax



**Temporary Pit Inspection**

**FACILITY INFORMATION**

<b>Facility Name: Rosa#169D</b>	<b>API #: 30-039-30755</b>

<b>Pit Type:</b> <input checked="" type="checkbox"/> Drilling <input type="checkbox"/> Workover <input type="checkbox"/> Cavitation	<b>Inspection:</b> <input type="checkbox"/> Daily (Rig) <input checked="" type="checkbox"/> Weekly (Tech)
--	---

Pit Liner intact (no visible tears)	<input checked="" type="checkbox"/> Yes <input type="checkbox"/> No If No, Report to EH&S immediately	Date / Time Reported to EH&S:
Pit Properly Fenced (no fence on rig side if on site)	<input checked="" type="checkbox"/> Yes <input type="checkbox"/> No <input type="checkbox"/> Not Required (if site fully fenced)	
Pit Slopes intact	<input checked="" type="checkbox"/> Yes <input type="checkbox"/> No	
Adequate freeboard (liquid level 2 vertical feet from berm top)	<input checked="" type="checkbox"/> Yes <input type="checkbox"/> No <input type="checkbox"/> Not Applicable	
Does pit have oil or sheen on it?	<input type="checkbox"/> Yes <input checked="" type="checkbox"/> No	
Flare Pit free of liquids	<input checked="" type="checkbox"/> Yes <input type="checkbox"/> No <input type="checkbox"/> Not Applicable	
Comments:		
Inspector Signature: Dwayne Miller		
Printed Name: Dwayne Miller		
Title: Tech		
Date: 1-8-2010	Phone: (505)320-7737	

Record Retention: Submit with Closure  
 File: EH&S Well Files

Exploration & Production  
 San Juan Basin Operations  
 720 So. Main / PO Box 640  
 Aztec, NM 87410  
 505-634-4200 / 505-634-4205 fax



**Temporary Pit Inspection**

**FACILITY INFORMATION**

<b>Facility Name: Rosa#169D</b>	<b>API #: 30-039-30755</b>

<b>Pit Type:</b> <input checked="" type="checkbox"/> Drilling <input type="checkbox"/> Workover <input type="checkbox"/> Cavitation	<b>Inspection:</b> <input type="checkbox"/> Daily (Rig) <input checked="" type="checkbox"/> Weekly (Tech)
--	---

Pit Liner intact (no visible tears)	<input checked="" type="checkbox"/> Yes <input type="checkbox"/> No If No, Report to EH&S immediately	Date / Time Reported to EH&S:
Pit Properly Fenced (no fence on rig side if on site)	<input checked="" type="checkbox"/> Yes <input type="checkbox"/> No <input type="checkbox"/> Not Required (if site fully fenced)	
Pit Slopes intact	<input checked="" type="checkbox"/> Yes <input type="checkbox"/> No	
Adequate freeboard (liquid level 2 vertical feet from berm top)	<input checked="" type="checkbox"/> Yes <input type="checkbox"/> No <input type="checkbox"/> Not Applicable	
Does pit have oil or sheen on it?	<input type="checkbox"/> Yes <input checked="" type="checkbox"/> No	
Flare Pit free of liquids	<input checked="" type="checkbox"/> Yes <input type="checkbox"/> No <input type="checkbox"/> Not Applicable	

Comments:	
Inspector Signature: Dwayne Miller	
Printed Name: Dwayne Miller	
Title: Tech	
Date: 1-15-2010	Phone: (505)320-7737

Record Retention: Submit with Closure  
 File EH&S Well Files

Exploration & Production  
 San Juan Basin Operations  
 720 So. Main / PO Box 640  
 Aztec, NM 87410  
 505-634-4200 / 505-634-4205 fax



**Temporary Pit Inspection**

**FACILITY INFORMATION**

<b>Facility Name: Rosa#169D</b>	<b>API #: 30-039-30755</b>

<b>Pit Type:</b> x <input type="checkbox"/> Drilling <input type="checkbox"/> Workover <input type="checkbox"/> Cavitation	<b>Inspection:</b> <input type="checkbox"/> Daily (Rig) x <input checked="" type="checkbox"/> Weekly (Tech)
---	---

Pit Liner intact (no visible tears)	x <input type="checkbox"/> Yes <input type="checkbox"/> No If No, Report to EH&S immediately	Date / Time Reported to EH&S:
Pit Properly Fenced (no fence on rig side if on site)	x <input type="checkbox"/> Yes <input type="checkbox"/> No <input type="checkbox"/> Not Required (if site fully fenced)	
Pit Slopes intact	x <input type="checkbox"/> Yes <input type="checkbox"/> No	
Adequate freeboard (liquid level 2 vertical feet from berm top)	x <input type="checkbox"/> Yes <input type="checkbox"/> No <input type="checkbox"/> Not Applicable	
Does pit have oil or sheen on it?	<input type="checkbox"/> Yes x <input checked="" type="checkbox"/> No	
Flare Pit free of liquids	x <input type="checkbox"/> Yes <input type="checkbox"/> No <input type="checkbox"/> Not Applicable	

Comments:		
Inspector Signature: Dwayne Miller		
Printed Name: Dwayne Miller		
Title: Tech		
Date: 1-29-2010	Phone: (505)320-7737	

Record Retention: Submit with Closure  
 File. EH&S Well Files

Exploration & Production  
 San Juan Basin Operations  
 720 So. Main / PO Box 640  
 Aztec, NM 87410  
 505-634-4200 / 505-634-4205 fax



**Temporary Pit Inspection**

**FACILITY INFORMATION**

<b>Facility Name: Rosa#169D</b>	<b>API #: 30-039-30755</b>

<b>Pit Type:</b> <input checked="" type="checkbox"/> Drilling <input type="checkbox"/> Workover <input type="checkbox"/> Cavitation	<b>Inspection:</b> <input type="checkbox"/> Daily (Rig) <input checked="" type="checkbox"/> Weekly (Tech)
--	---

Pit Liner intact (no visible tears)	<input checked="" type="checkbox"/> Yes <input type="checkbox"/> No If No, Report to EH&S immediately	Date / Time Reported to EH&S:
Pit Properly Fenced (no fence on rig side if on site)	<input checked="" type="checkbox"/> Yes <input type="checkbox"/> No <input type="checkbox"/> Not Required (if site fully fenced)	
Pit Slopes intact	<input checked="" type="checkbox"/> Yes <input type="checkbox"/> No	
Adequate freeboard (liquid level 2 vertical feet from berm top)	<input checked="" type="checkbox"/> Yes <input type="checkbox"/> No <input type="checkbox"/> Not Applicable	
Does pit have oil or sheen on it?	<input type="checkbox"/> Yes <input checked="" type="checkbox"/> No	
Flare Pit free of liquids	<input checked="" type="checkbox"/> Yes <input type="checkbox"/> No <input type="checkbox"/> Not Applicable	

Comments:	
Inspector Signature: Dwayne Miller	
Printed Name: Dwayne Miller	
Title: Tech	
Date: 2-5-2010	Phone: (505)320-7737

Record Retention: Submit with Closure  
 File: EH&S Well Files

Exploration & Production  
 San Juan Basin Operations  
 720 So. Main / PO Box 640  
 Aztec, NM 87410  
 505-634-4200 / 505-634-4205 fax



**Temporary Pit Inspection**

**FACILITY INFORMATION**

<b>Facility Name: Rosa#169D</b>	<b>API #: 30-039-30755</b>

<b>Pit Type:</b> <input checked="" type="checkbox"/> Drilling <input type="checkbox"/> Workover <input type="checkbox"/> Cavitation	<b>Inspection:</b> <input type="checkbox"/> Daily (Rig) <input checked="" type="checkbox"/> Weekly (Tech)
--	---

Pit Liner intact (no visible tears)	<input checked="" type="checkbox"/> Yes <input type="checkbox"/> No If No, Report to EH&S immediately	Date / Time Reported to EH&S:
Pit Properly Fenced (no fence on rig side if on site)	<input checked="" type="checkbox"/> Yes <input type="checkbox"/> No <input type="checkbox"/> Not Required (if site fully fenced)	
Pit Slopes intact	<input checked="" type="checkbox"/> Yes <input type="checkbox"/> No	
Adequate freeboard (liquid level 2 vertical feet from berm top)	<input checked="" type="checkbox"/> Yes <input type="checkbox"/> No <input type="checkbox"/> Not Applicable	
Does pit have oil or sheen on it?	<input type="checkbox"/> Yes <input checked="" type="checkbox"/> No	
Flare Pit free of liquids	<input checked="" type="checkbox"/> Yes <input type="checkbox"/> No <input type="checkbox"/> Not Applicable	

Comments:

Inspector Signature: Dwayne Miller

Printed Name: Dwayne Miller

Title: Tech

Date: 2-11-2010 Phone: (505)320-7737

Record Retention. Submit with Closure  
 File: EH&S Well Files

Exploration & Production  
 San Juan Basin Operations  
 720 So. Main / PO Box 640  
 Aztec, NM 87410  
 505-634-4200 / 505-634-4205 fax



**Temporary Pit Inspection**

**FACILITY INFORMATION**

<b>Facility Name: Rosa#169D</b>	<b>API #: 30-039-30755</b>

<b>Pit Type:</b> <input checked="" type="checkbox"/> Drilling <input type="checkbox"/> Workover <input type="checkbox"/> Cavitation	<b>Inspection:</b> <input type="checkbox"/> Daily (Rig) <input checked="" type="checkbox"/> Weekly (Tech)
--	---

Pit Liner intact (no visible tears)	<input checked="" type="checkbox"/> Yes <input type="checkbox"/> No If No, Report to EH&S immediately	Date / Time Reported to EH&S:
Pit Properly Fenced (no fence on rig side if on site)	<input checked="" type="checkbox"/> Yes <input type="checkbox"/> No <input type="checkbox"/> Not Required (if site fully fenced)	
Pit Slopes intact	<input checked="" type="checkbox"/> Yes <input type="checkbox"/> No	
Adequate freeboard (liquid level 2 vertical feet from berm top)	<input checked="" type="checkbox"/> Yes <input type="checkbox"/> No <input type="checkbox"/> Not Applicable	
Does pit have oil or sheen on it?	<input type="checkbox"/> Yes <input checked="" type="checkbox"/> No	
Flare Pit free of liquids	<input checked="" type="checkbox"/> Yes <input type="checkbox"/> No <input type="checkbox"/> Not Applicable	

Comments:

Inspector Signature: Dwayne Miller

Printed Name: Dwayne Miller

Title: Tech

Date: 2-24-2010 Phone: (505)320-7737

Record Retention: Submit with Closure  
 File: EH&S Well Files

Exploration & Production  
 San Juan Basin Operations  
 720 So. Main / PO Box 640  
 Aztec, NM 87410  
 505-634-4200 / 505-634-4205 fax



**Temporary Pit Inspection**

**FACILITY INFORMATION**

<b>Facility Name: Rosa#169D</b>	<b>API #: 30-039-30755</b>

<b>Pit Type:</b> <input checked="" type="checkbox"/> Drilling <input type="checkbox"/> Workover <input type="checkbox"/> Cavitation	<b>Inspection:</b> <input type="checkbox"/> Daily (Rig) <input checked="" type="checkbox"/> Weekly (Tech)
--	---

Pit Liner intact (no visible tears)	<input checked="" type="checkbox"/> Yes <input type="checkbox"/> No If No, Report to EH&S immediately	Date / Time Reported to EH&S:
Pit Properly Fenced (no fence on rig side if on site)	<input checked="" type="checkbox"/> Yes <input type="checkbox"/> No <input type="checkbox"/> Not Required (if site fully fenced)	
Pit Slopes intact	<input checked="" type="checkbox"/> Yes <input type="checkbox"/> No	
Adequate freeboard (liquid level 2 vertical feet from berm top)	<input checked="" type="checkbox"/> Yes <input type="checkbox"/> No <input type="checkbox"/> Not Applicable	
Does pit have oil or sheen on it?	<input type="checkbox"/> Yes <input checked="" type="checkbox"/> No	
Flare Pit free of liquids	<input checked="" type="checkbox"/> Yes <input type="checkbox"/> No <input type="checkbox"/> Not Applicable	

Comments:		
Inspector Signature: Dwayne Miller		
Printed Name: Dwayne Miller		
Title: Tech		
Date: 3-5-2010	Phone: (505)320-7737	

Record Retention: Submit with Closure  
 File. EH&S Well Files

Exploration & Production  
 San Juan Basin Operations  
 720 So. Main / PO Box 640  
 Aztec, NM 87410  
 505-634-4200 / 505-634-4205 fax



**Temporary Pit Inspection**

**FACILITY INFORMATION**

<b>Facility Name: Rosa#169D</b>	<b>API #: 30-039-30755</b>

<b>Pit Type:</b> <input checked="" type="checkbox"/> Drilling <input type="checkbox"/> Workover <input type="checkbox"/> Cavitation	<b>Inspection:</b> <input type="checkbox"/> Daily (Rig) <input checked="" type="checkbox"/> Weekly (Tech)
--	---

Pit Liner intact (no visible tears)	<input checked="" type="checkbox"/> Yes <input type="checkbox"/> No If No, Report to EH&S immediately	Date / Time Reported to EH&S:
Pit Properly Fenced (no fence on rig side if on site)	<input checked="" type="checkbox"/> Yes <input type="checkbox"/> No <input type="checkbox"/> Not Required (if site fully fenced)	
Pit Slopes intact	<input checked="" type="checkbox"/> Yes <input type="checkbox"/> No	
Adequate freeboard (liquid level 2 vertical feet from berm top)	<input checked="" type="checkbox"/> Yes <input type="checkbox"/> No <input type="checkbox"/> Not Applicable	
Does pit have oil or sheen on it?	<input type="checkbox"/> Yes <input checked="" type="checkbox"/> No	
Flare Pit free of liquids	<input checked="" type="checkbox"/> Yes <input type="checkbox"/> No <input type="checkbox"/> Not Applicable	
Comments: Liquid is approaching 2ft of top of berm		
Inspector Signature: Dwayne Miller		
Printed Name: Dwayne Miller		
Title: Tech		
Date: 3-19-2010		Phone: (505)320-7737

Record Retention Submit with Closure  
 File EH&S Well Files



Exploration & Production  
 San Juan Basin Operations  
 720 So. Main / PO Box 640  
 Aztec, NM 87410  
 505-634-4200 / 505-634-4205 fax



**Temporary Pit Inspection**

**FACILITY INFORMATION**

<b>Facility Name: Rosa#169D</b>	<b>API #: 30-039-30755</b>

<b>Pit Type:</b> <input checked="" type="checkbox"/> Drilling <input type="checkbox"/> Workover <input type="checkbox"/> Cavitation	<b>Inspection:</b> <input type="checkbox"/> Daily (Rig) <input checked="" type="checkbox"/> Weekly (Tech)
--	---

Pit Liner intact (no visible tears)	<input checked="" type="checkbox"/> Yes <input type="checkbox"/> No If No, Report to EH&S immediately	Date / Time Reported to EH&S:
Pit Properly Fenced (no fence on rig side if on site)	<input checked="" type="checkbox"/> Yes <input type="checkbox"/> No <input type="checkbox"/> Not Required (if site fully fenced)	
Pit Slopes intact	<input checked="" type="checkbox"/> Yes <input type="checkbox"/> No	
Adequate freeboard (liquid level 2 <u>vertical</u> feet from berm top)	<input checked="" type="checkbox"/> Yes <input type="checkbox"/> No <input type="checkbox"/> Not Applicable	
Does pit have oil or sheen on it?	<input type="checkbox"/> Yes <input checked="" type="checkbox"/> No	
Flare Pit free of liquids	<input checked="" type="checkbox"/> Yes <input type="checkbox"/> No <input type="checkbox"/> Not Applicable	

Comments:

Inspector Signature: Dwayne Miller
Printed Name: Dwayne Miller
Title: Tech
Date: 12-22-09 <span style="float: right;">Phone: (505)320-7737</span>

Record Retention: Submit with Closure  
 File: EH&S Well Files

Exploration & Production  
 San Juan Basin Operations  
 720 So. Main / PO Box 640  
 Aztec, NM 87410  
 505-634-4200 / 505-634-4205 fax



**Temporary Pit Inspection**

**FACILITY INFORMATION**

<b>Facility Name: Rosa#169D</b>	<b>API #: 30-039-30755</b>

<b>Pit Type:</b> x <input type="checkbox"/> Drilling <input type="checkbox"/> Workover <input type="checkbox"/> Cavitation	<b>Inspection:</b> <input type="checkbox"/> Daily (Rig) x <input type="checkbox"/> Weekly (Tech)
---	--

Pit Liner intact (no visible tears)	x <input type="checkbox"/> Yes <input type="checkbox"/> No If No, Report to EH&S immediately	Date / Time Reported to EH&S:
Pit Properly Fenced (no fence on rig side if on site)	x <input type="checkbox"/> Yes <input type="checkbox"/> No <input type="checkbox"/> Not Required (if site fully fenced)	
Pit Slopes intact	x <input type="checkbox"/> Yes <input type="checkbox"/> No	
Adequate freeboard (liquid level 2 <u>vertical</u> feet from berm top)	x <input type="checkbox"/> Yes <input type="checkbox"/> No <input type="checkbox"/> Not Applicable	
Does pit have oil or sheen on it?	<input type="checkbox"/> Yes x <input type="checkbox"/> No	
Flare Pit free of liquids	x <input type="checkbox"/> Yes <input type="checkbox"/> No <input type="checkbox"/> Not Applicable	

Comments:	
Inspector Signature: Dwayne Miller	
Printed Name: Dwayne Miller	
Title: Tech	
Date: 12-11-09	Phone: (505)320-7737

Record Retention Submit with Closure  
 File EH&S Well Files

Exploration & Production  
 San Juan Basin Operations  
 720 So. Main / PO Box 640  
 Aztec, NM 87410  
 505-634-4200 / 505-634-4205 fax



**Temporary Pit Inspection**

**FACILITY INFORMATION**

<b>Facility Name: Rosa#169D</b>	<b>API #: 30-039-30755</b>

<b>Pit Type:</b> <input checked="" type="checkbox"/> Drilling <input type="checkbox"/> Workover <input type="checkbox"/> Cavitation	<b>Inspection:</b> <input type="checkbox"/> Daily (Rig) <input checked="" type="checkbox"/> Weekly (Tech)
--	---

Pit Liner intact (no visible tears)	<input checked="" type="checkbox"/> Yes <input type="checkbox"/> No If No, Report to EH&S immediately	Date / Time Reported to EH&S:
Pit Properly Fenced (no fence on rig side if on site)	<input checked="" type="checkbox"/> Yes <input type="checkbox"/> No <input type="checkbox"/> Not Required (if site fully fenced)	
Pit Slopes intact	<input checked="" type="checkbox"/> Yes <input type="checkbox"/> No	
Adequate freeboard (liquid level 2 vertical feet from berm top)	<input checked="" type="checkbox"/> Yes <input type="checkbox"/> No <input type="checkbox"/> Not Applicable	
Does pit have oil or sheen on it?	<input type="checkbox"/> Yes <input checked="" type="checkbox"/> No	
Flare Pit free of liquids	<input checked="" type="checkbox"/> Yes <input type="checkbox"/> No <input type="checkbox"/> Not Applicable	

Comments:		
Inspector Signature: Dwayne Miller		
Printed Name: Dwayne Miller		
Title: Tech		
Date: 12-18-09	Phone: (505)320-7737	

Record Retention: Submit with Closure  
 File: EH&S Well Files

Exploration & Production  
 San Juan Basin Operations  
 720 So. Main / PO Box 640  
 Aztec, NM 87410  
 505-634-4200 / 505-634-4205 fax



**Temporary Pit Inspection**

**FACILITY INFORMATION**

<b>Facility Name:</b> Rosa#169D	<b>API #:</b> 30-039-30755

<b>Pit Type:</b> <input checked="" type="checkbox"/> Drilling <input type="checkbox"/> Workover <input type="checkbox"/> Cavitation	<b>Inspection:</b> <input type="checkbox"/> Daily (Rig) <input checked="" type="checkbox"/> Weekly (Tech)
--	---

Pit Liner intact (no visible tears)	<input checked="" type="checkbox"/> Yes <input type="checkbox"/> No If No, Report to EH&S immediately	Date / Time Reported to EH&S:
Pit Properly Fenced (no fence on rig side if on site)	<input checked="" type="checkbox"/> Yes <input type="checkbox"/> No <input type="checkbox"/> Not Required (if site fully fenced)	
Pit Slopes intact	<input checked="" type="checkbox"/> Yes <input type="checkbox"/> No	
Adequate freeboard (liquid level 2 vertical feet from berm top)	<input checked="" type="checkbox"/> Yes <input type="checkbox"/> No <input type="checkbox"/> Not Applicable	
Does pit have oil or sheen on it?	<input type="checkbox"/> Yes <input checked="" type="checkbox"/> No	
Flare Pit free of liquids	<input checked="" type="checkbox"/> Yes <input type="checkbox"/> No <input type="checkbox"/> Not Applicable	

Comments:

Inspector Signature: Dwayne Miller

Printed Name: Dwayne Miller

Title: Tech

Date: 12-30-09 Phone: (505)320-7737

Record Retention: Submit with Closure  
 File. EH&S Well Files



Exploration & Production  
PO Box 640  
Aztec, NM 87410  
505/634-4219  
505/634-4205 fax



## Transmittal

**To:** Brandon Powell  
NMOCD  
1000 Rio Brazos Road  
Aztec, New Mexico 87410

**From:** Tasha Meador  
San Juan- Permitting Technician  
505-634-4241  
tasha.meador@williams.com

**Date:**

**Re:** Supplemental Submittal

Temporary Pit Closure report: NMOCD Permit # 6893

Enclosed and per your direction, please find our supplemental submittal for the referenced temporary pit closure report.

Please advise if additional information is required. Thank you for your time and consideration. Please call or contact me if there are any questions.

Respectfully resubmitted,

Tasha Meador  
Williams Exploration & Production  
721 S Main Aztec, NM  
Office: 505-634-4200  
Direct: 505-634-4241  
Fax: 505-634-4205  
[tasha.meador@williams.com](mailto:tasha.meador@williams.com)

Encl:

District I  
1625 N. French Dr., Hobbs, NM 88240

District II  
1301 W Grand Avenue, Artesia, NM 88210

District III  
1000 Rio Brazos Rd., Aztec, NM 87410

District IV  
1220 S St Francis Dr., Santa Fe, NM 87505

State of New Mexico  
Energy, Minerals & Natural Resources Department

OIL CONSERVATION DIVISION  
1220 South St. Francis Dr.  
Santa Fe, NM 87505

Form C-102  
Revised October 12, 2005  
Instructions on back  
Submit to Appropriate District Office  
State Lease - 4 Copies  
Fee Lease - 3 Copies

AMENDED REPORT

10-29-09

WELL LOCATION AND ACREAGE DEDICATION PLAT

<sup>1</sup> API Number 30-039-30755	<sup>2</sup> Pool Code 97232 / 72319 / 71599	<sup>3</sup> Pool Name BASIN MANCOS / BLANCO MESAVERDE / BASIN DAKOTA
<sup>4</sup> Property Code 17033	<sup>5</sup> Property Name ROSA UNIT COM	
<sup>7</sup> OGRID No 120782	<sup>6</sup> Operator Name WILLIAMS PRODUCTION COMPANY	<sup>8</sup> Well Number 1690
		<sup>9</sup> Elevation 6355'

<sup>10</sup> Surface Location

UL or lot no	Section	Township	Range	Lot Idn	Feet from the	North/South line	Feet from the	East/West line	County
J	3	31N	6W		2395	SOUTH	1720	EAST	RIO ARRIBA

<sup>11</sup> Bottom Hole Location If Different From Surface

UL or lot no	Section	Township	Range	Lot Idn	Feet from the	North/South line	Feet from the	East/West line	County
I	3	31N	6W		2206	SOUTH	667	EAST	RIO ARRIBA

<sup>12</sup> Dedicated Acres See Note Below for Dedicated Acres	<sup>13</sup> Joint or Infill	<sup>14</sup> Consolidation Code	<sup>15</sup> Order No
---	-------------------------------	----------------------------------	------------------------

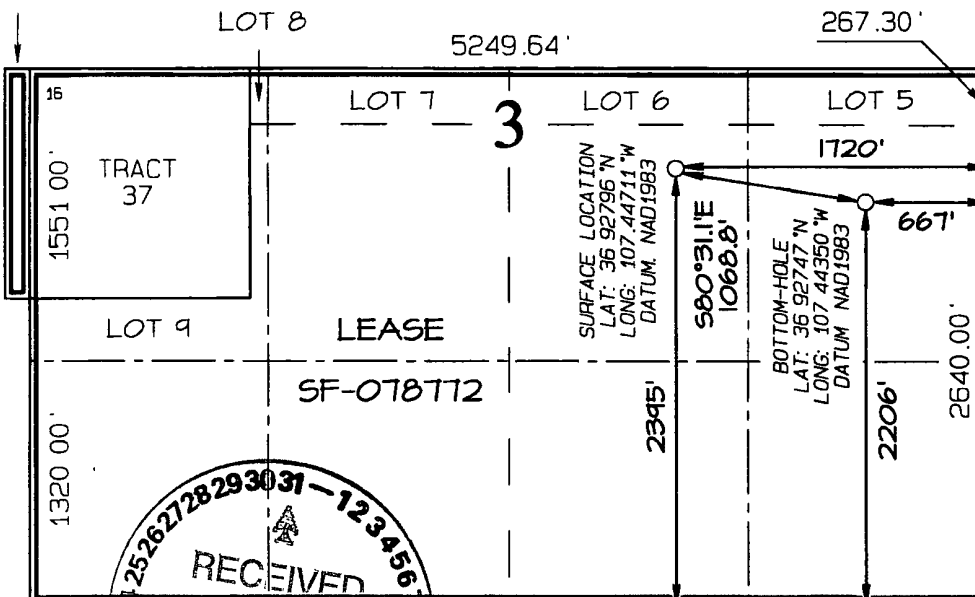
NO ALLOWABLE WILL BE ASSIGNED TO THIS COMPLETION UNTIL ALL INTERESTS HAVE BEEN CONSOLIDATED OR A NON-STANDARD UNIT HAS BEEN APPROVED BY THE DIVISION

352.87 Acres (MV) - Entire Section 3

355.41 Acres (MANCOS, DK)

Entire Section 3 and Tract 37 in Section 4

TRACT 37  
Section 4



<sup>17</sup> OPERATOR CERTIFICATION

I hereby certify that the information contained herein is true and complete to the best of my knowledge and belief, and that this organization either owns a working interest or unleased mineral interest in the land including the proposed bottom-hole location or has a right to drill this well at this location pursuant to a contract with an owner of such a mineral or working interest, or to a voluntary pooling agreement or a compulsory pooling order heretofore entered by the division

Tosha Meador 8/31/11  
Signature Date

Tosha Meador  
Printed Name

<sup>18</sup> SURVEYOR CERTIFICATION

I hereby certify that the well location shown on this plat was plotted from field notes of actual surveys made by me or under my supervision, and that the same is true and correct to the best of my belief

Survey Date: DECEMBER 7, 2008  
Date Revised: SEPTEMBER 16, 2009

Signature and Seal of Professional Surveyor



JASON C. EDWARDS  
Certificate Number 15269

Submit To Appropriate District Office  
Two Copies  
District I  
1625 N French Dr Hobbs NM 88240  
District II  
1301 W Grand Avenue, Artesia, NM 88210  
District III  
1000 Rio Brazos Rd Aztec NM 87410  
District IV  
1220 S St Francis Dr Santa Fe NM 87505

State of New Mexico  
Energy, Minerals and Natural Resources  
  
Oil Conservation Division  
1220 South St. Francis Dr.  
Santa Fe, NM 87505

Form C-105  
July 17, 2008

1. WELL API NO.  
30-039-30755

2. Type of Lease  
 STATE  FEE  FED/INDIAN

3. State Oil & Gas Lease No SF-078766

**WELL COMPLETION OR RECOMPLETION REPORT AND LOG**

4 Reason for filing  
 COMPLETION REPORT (Fill in boxes #1 through #31 for State and Fee wells only)  
 C-144 CLOSURE ATTACHMENT (Fill in boxes #1 through #9, #15 Date Rig Released and #32 and/or #33, attach this and the plat to the C-144 closure report in accordance with 19 15 17 13 K NMAC)

5 Lease Name or Unit Agreement Name  
Rosa

6 Well Number  
Rosa Unit #169D

7 Type of Completion  
 NEW WELL  WORKOVER  DEEPENING  PLUGBACK  DIFFERENT RESERVOIR  OTHER

8 Name of Operator WILLIAMS PRODUCTION, LLC

9 OGRID 120782

10 Address of Operator P O BOX 640 AZTEC, NM 87410

11 Pool name or Wildcat

12. Location	Unit Ltr	Section	Township	Range	Lot	Feet from the	N/S Line	Feet from the	E/W Line	County
Surface:										
BH:										

13 Date Spudded 14 Date T D Reached 15 Date Rig Released 10/29/2009 16 Date Completed (Ready to Produce) 17 Elevations (DF and RKB, RT, GR, etc )

18 Total Measured Depth of Well 19 Plug Back Measured Depth 20 Was Directional Survey Made? 21 Type Electric and Other Logs Run

22 Producing Interval(s), of this completion - Top, Bottom, Name

**23 CASING RECORD (Report all strings set in well)**

CASING SIZE	WEIGHT LB /FT	DEPTH SET	HOLE SIZE	CEMENTING RECORD	AMOUNT PULLED

**24 LINER RECORD 25 TUBING RECORD**

SIZE	TOP	BOTTOM	SACKS CEMENT	SCREEN	SIZE	DEPTH SET	PACKER SET

26 Perforation record (interval, size, and number)	27 ACID, SHOT, FRACTURE, CEMENT, SQUEEZE, ETC	
	DEPTH INTERVAL	AMOUNT AND KIND MATERIAL USED

**28 PRODUCTION**

Date First Production Production Method (Flowing, gas lift pumping - Size and type pump) Well Status (Prod or Shut-in)

Date of Test Hours Tested Choke Size Prod'n For Test Period Oil - Bbl Gas - MCF Water - Bbl Gas - Oil Ratio

Flow Tubing Press Casing Pressure Calculated 24-Hour Rate Oil - Bbl Gas - MCF Water - Bbl Oil Gravity - API - (Corr )

29 Disposition of Gas (Sold used for fuel, vented etc ) 30 Test Witnessed By

31 List Attachments

32 If a temporary pit was used at the well, attach a plat with the location of the temporary pit

33 If an on-site burial was used at the well, report the exact location of the on-site burial

Latitude 36 92796 Longitude 107 44711 NAD 1927 1983

I hereby certify that the information shown on both sides of this form is true and complete to the best of my knowledge and belief

Signature Tasha Meador Printed Name Tasha Meador Title Permit Technician Date 8/3/11

E-mail Address: tasha.meador@williams.com