

UNITED STATES  
DEPARTMENT OF INTERIOR  
BUREAU OF LAND MANAGEMENT

RECEIVED

JUL 27 2011

FORM APPROVED  
Budget Bureau No. 1004-0135  
Expires: March 31, 1993

SUNDRY NOTICE AND REPORTS ON WELLS

Do not use this form for proposals to drill or to deepen or reentry to a different reservoir. Use "APPLICATION FOR PERMIT TO DRILL" for permit for such proposals

Lease Designation and Serial No.  
NMSF-078894

If Indian, Allottee or Tribe Name  
N/A

SUBMIT IN TRIPLICATE

1. Type of Well  
Oil Well ☒ Gas Well ☐ Other ☐

2. Name of Operator  
WILLIAMS PRODUCTION COMPANY

3. Address and Telephone No.  
PO BOX 640 Aztec, NM 87410-0640 634-4208

4. Location of Well (Footage, Sec., T., R., M., or Survey Description)  
SHL0 1200' FNL & 1715' FWL  
BHL: 1346' FNL & 1801' FWL Sec. 27, T31N, R4W

7. If Unit or CA, Agreement Designation  
Rosa

8. Well Name and No.  
Rosa Unit #602

9. API Well No.  
30-039-30914

10. Field and Pool, or Exploratory Area  
Blanco MV/Basin MC/Basin DK

11. County or Parish, State  
Rio Arriba, NM

CHECK APPROPRIATE BOX(S) TO INDICATE NATURE OF NOTICE, REPORT, OR OTHER DATA

TYPE OF SUBMISSION

Notice of Intent  
☒ Subsequent Report  
Final Abandonment

TYPE OF ACTION

Abandonment  
Recompletion  
Plugging Back  
Casing Repair  
Altering Casing  
☒ Other Completion to additional  
MC and P&A DK

Change of Plans  
New Construction  
Non-Routine Fracturing  
Water Shut-Off  
Conversion to Injection

Dispose Water

Note: Report results of multiple completion on  
Well Completion or Recompletion Report and Log  
form

13. Describe Proposed or Completed Operations (Clearly state all pertinent details, and give pertinent dates, including estimated date of starting any proposed work. If well is directionally drilled, give subsurface locations and measured and true vertical depths for all markers and zones pertinent to this work.)\*

4/1/11- MIRU AWS #656 for completion operations.

4/4/11 - TOOH with tubing string.

4/5/11- Set CIBP @ 8040', did not hold. Set another CIBP @ 7980'. RDMO AWS #656.

4/6/11 - RU BWWL. Perforate MC 3<sup>rd</sup> stage, 7765' to 7935', with 45, .34" holes. RD BWWL.

4/11/11 - Frac MC 3<sup>rd</sup> stage with 14,186# Ottawa 100 mesh sand, follow with 42,982# 30/50 Ottawa sand, prop, follow w/ 99,532# 20/40 Ottawa sand.

4/12/11-4/6/11- Flow and test MC 3<sup>rd</sup> stage.

4/18/11- 4/26/211- MIRU AWS #471. C/O and flow test MC 3<sup>rd</sup> stage.

4/27/11- RU BWWL. Set CIBP @ 7740'. Perforate MC 4<sup>th</sup> stage 7470' to 7650', with 51, .34" holes. RD BWWL.

ACCEPTED FOR RECORD

AUG 03 2011

FARMINGTON FIELD OFFICE  
BY SCV

DIST. 3

RCVD AUG 4 '11  
OIL CONS. DIV.

14. I hereby certify that the foregoing is true and correct

Signed Ben Mitchell  
Ben Mitchell

Title Regulatory Specialist

Date 7/21/10

(This space for Federal or State office use)

Approved by \_\_\_\_\_

Title \_\_\_\_\_

Date \_\_\_\_\_

Conditions of approval, if any:

NMOCD 14

---

statements or representations as to any matter within its jurisdiction.

---

5/6/11 – Frac MC 4<sup>th</sup> stage with 7600 lbs of 100 Mesh, Brady sand, follow with 149,100 lbs of 40/70 Ottawa sand.

5/7/11 – 5/24/11 – Flow and test MC 4<sup>th</sup> stage.

5/25/11 - Set CIBP @ 7330'. Perforate MC 5<sup>th</sup> stage, 7105' to 7195', with 30, .34" holes. RD BWWL.

5/26/11 – 6/5/11 – Shut in well.

6/6/11 - Try to frac 5<sup>th</sup> stage Mancos when sand hit perfs the perfs screened off, SD sand & try to flush sand, left 834# of sand in well bore.

6/14/11 – RU BWWL. Re-perforate MC 5<sup>th</sup> stage, 7110' to 7200', with 30, .34" holes. Frac MC 5<sup>th</sup> stage with 5000 lbs of BASF 100 Mesh sand, follow w/ 102,100 lbs of 40/70 Ottawa sand. RD BWWL.

6/16/11 –MIRU AWS #471.

6/16/11 – 6/28/11 - C/O and flow test MC 5<sup>th</sup> stage.

6/28/11- RDMO AWS #471, MIRU AWS #485

7/1/11 – DO CIBP @7330'

7/2/11 - DO CIBP @7740'

7/5/11 - DO CIBP @7980'

7/6/11 - DO CIBP @8040'. D/O CIBP @8272'.

7/9/11 - Land well @ 8323' KB as follows, one 2.375" Exp-chk / 1/2 MS, one jt 2.375", N-80, 4.7#, EUE 8rnd tbg, one 1.78" F-nple, 260 jts 2.375", N-80, 4.7#, EUE 8rnd tbg, (261 total jts), F-nple set @ 8290' (CIBP @ 8430' with 30' of cement on top)

\* Need flow for completed formations,  
as well as a sunbly for DK  
abandonment \*

# ROSA UNIT #602 BLANCO MV/BASIN MC/ BASIN DK

Spud Date 6/10/10  
Completed

Surface Location:

1200' FNL & 1715' FWL,

Sec 27, T31N, R4W

BHL

1346' FNL & 1801' FWL,

Sec 27, T31N, R4W

Rio Arriba, NM

Elevation: 7028' GR

API #: 30-039-30914

<u>Tops</u>	<u>Depth</u>
Lewis	4248'
Cliff House	6073
Point Lookout	6289'
Mancos	6788
Graneros	8395'
Dakota	8535'

5th Stage MC: 7105'-7200' (60, 0.34" holes) Frac with 5,000# 100 mesh followed with 102,100# 40/70 mesh ottawa

4th Stage MC: 7470'-7650' (51, 0.34" holes) Frac with 7,600# 100 mesh followed with 149,100# 40/70 mesh ottawa

3rd Stage MC: 7765'-7935' (45, 0.34" holes) Frac with 14,186# 100 mesh followed with 8,082# 30/50 mesh ottawa followed with 28,228# 30/50 mesh ottawa followed with 6,672# 30/50 mesh ottawa followed with 78,719# 20/40 mesh ottawa

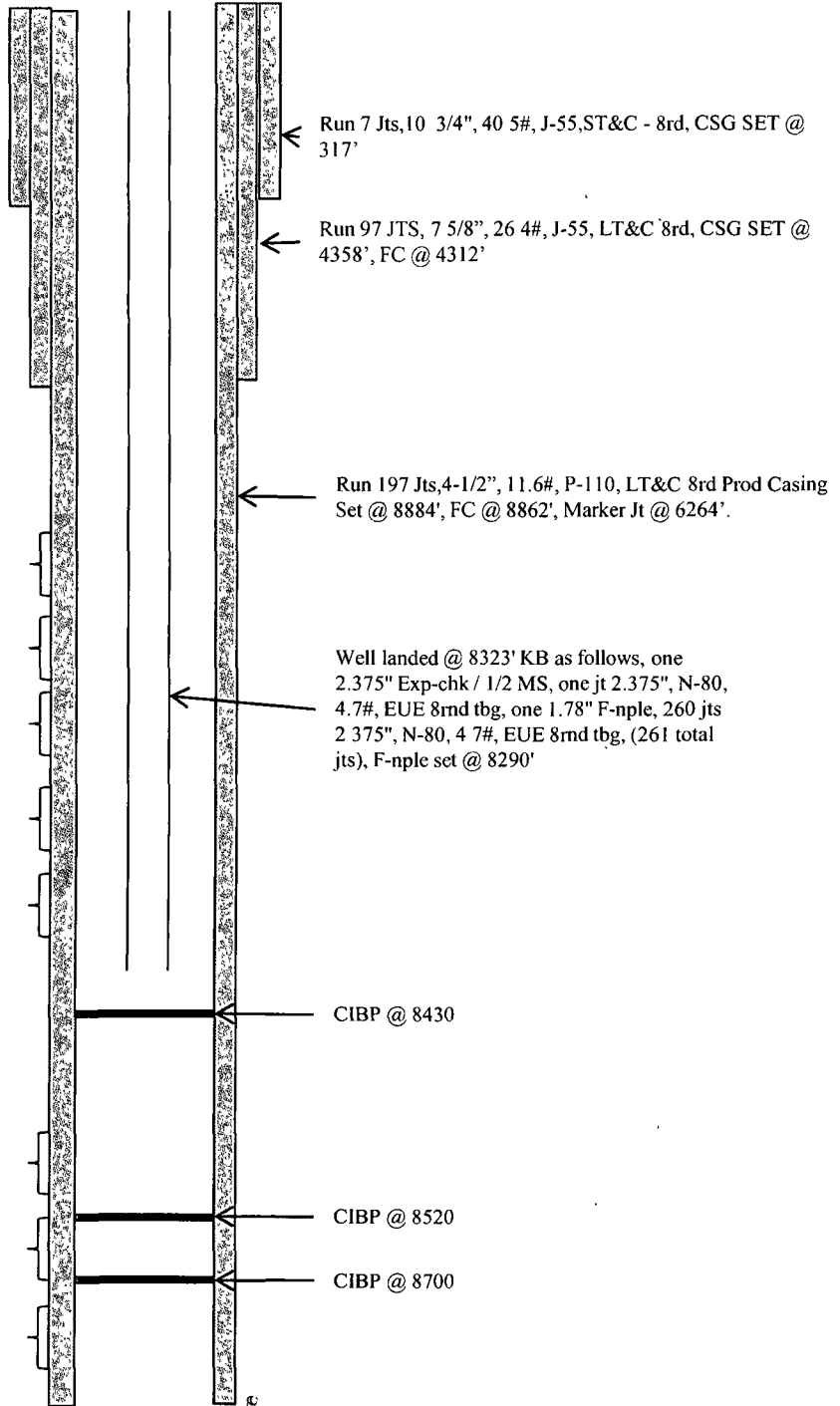
2nd Stage MC: 8055'-8165' (36, 0.34" holes) Frac with 15,026# 100 mesh followed with 45,414# 30/50 mesh ottawa followed with 90,744# 20/40 mesh ottawa

1st Stage MC: 8355'-8390' (24, 0.34" holes) Frac with 4,390# 100 mesh followed with 84,450# 40/70 mesh ottawa

3RD Stage DK: 8440'-8490' (33, 0.34" holes) Frac with 3,604# 100 mesh followed with 77,696# 30/50 mesh ottawa

2ND Stage DK: 8536'-8609' (36, 0.34" holes) Frac with 3,224# 100 mesh followed with 96,011# 40/70 mesh ottawa

1ST Stage DK: 8724'-8772' (18, 0.34" holes) No Frac



TD @ 8885  
PBD @ 8400'

HOLE SIZE	CASING	CEMENT	CU. FT.	CMT TOP
12 1/4"	10 3/4", 40.5#	290 s xs	522 cu.ft.	surface
10 3/4"	7 5/8", 26.4#	910 s xs	2297 cu.ft.	500' - Temp
6-3/4"	4 1/2", 11.6#	615 s xs	861 cu.ft.	4450' - CBL