

**UNITED STATES  
DEPARTMENT OF THE INTERIOR  
BUREAU OF LAND MANAGEMENT**

**RECEIVED****AUG 15 2011**

## Sundry Notices and Reports on Wells

Farmington Field Office  
Bureau of Land Management

1. Type of Well  
GAS

2. Name of Operator  
**BURLINGTON**  
RESOURCES OIL & GAS COMPANY LP

3. Address & Phone No. of Operator

PO Box 4289, Farmington, NM 87499 (505) 326-9700

4. Location of Well, Footage, Sec., T, R, M

Unit E (SWNW), 1650' FNL & 990' FWL, Section 13, T26N, R10W, NMPM

5. Lease Number  
NM-01368
6. If Indian, All. or  
Tribe Name
7. Unit Agreement Name  
Huerfano Unit
8. Well Name & Number  
Huerfano Unit 174
9. API Well No.  
30-045-20233
10. Field and Pool  
Basin Dakota
11. County and State  
San Juan, NM

**12. CHECK APPROPRIATE BOX TO INDICATE NATURE OF NOTICE, REPORT, OTHER DATA**

Type of Submission  
☒ Notice of Intent

Type of Action  
☒ Abandonment  
☐ Recompletion  
☐ Plugging  
☐ Casing Repair  
☐ Altering Casing

☐ Change of Plans  
☐ New Construction  
☐ Non-Routine Fracturing  
☐ Water Shut off  
☐ Conversion to Injection

☐ Other —

BP

**13. Describe Proposed or Completed Operations**

Burlington Resources requests permission to P&A the subject well per the attached procedure, current and proposed wellbore schematic.

Bring top of Mancos plug (Plug #3) to 4772' (4888'-4772')  
Bring top of Mesa Verde plug (Plug #4) to 3008' (3112'-3008')

**14. I hereby certify that the foregoing is true and correct.**

Signed Crystal Tafoya Crystal Tafoya

Title: Staff Regulatory Technician Date 8/15/11

(This space for Federal or State Office use)

APPROVED BY Original Signed: Stephen Mason Title

Date AUG 17 2011

CONDITION OF APPROVAL, if any:

Title 18 U.S.C. Section 1001, makes it a crime for any person knowingly and willfully to make any department or agency of the United States any false, fictitious or fraudulent statements or representations as to any matter within its jurisdiction

**NMOCD**

July 11, 2011

## Basin Dakota

1650' FNL & 990' FWL, Spot E, Section 13 -T 026N - R 010W  
San Juan County, New Mexico / API 3004520233  
Lat 36° 29' 27.852" N / Long 107° 51' 9.36" W

Note: All cement volumes use 100% excess outside pipe and 50' excess inside. The stabilizing wellbore fluid will be 8.3 ppg, sufficient to balance all exposed formation pressures. All cement will be Class B, mixed at 15.6 ppg with a 1.18 cf/sx yield.

**Note: This procedure is written with the knowledge that a CBL will need to be run on the 4-1/2" casing and the results of the CBL could change the current procedure.**

1. This project requires a NMOCD C-144 Closed-Loop System Permit for the use of an A-Plus steel tank to handle waste fluids circulated from the well and cement wash up.
2. Install and test location rig anchors. Comply with all NMOCD, BLM, and Operator safety regulations. MOL and RU daylight pulling unit. Conduct safety meeting for all personnel on location. Record casing, tubing and bradenhead pressures. NU relief line and blow down well. Kill well with water as necessary and at least pump tubing capacity of water down the tubing. ND wellhead and NU BOP. Function test BOP.
3. Rods: Yes\_\_\_\_, No X, Unknown\_\_\_\_.  
 Tubing: Yes X, No\_\_\_\_, Unknown\_\_\_\_ Size 2-3/8", Length 6818'.  
 Packer: Yes\_\_\_\_, No X, Unknown\_\_\_\_ Type\_\_\_\_\_  
 If this well has rods or a packer, then modify the work sequence in step #2 as appropriate.
4. PU on Dakota tubing at 6818' and TOH.
5. **Plug #1 (Dakota Perforations: 6560' – 6460')**: Load casing and circulate well clean. RIH and set CIBP at 6560'. Pressure test casing to 800#. *If casing does not test, then spot or tag subsequent plugs as appropriate.* Mix 12 sxs of Class B cement and spot above CIBP to cover Dakota perforations and top. TOH and LD tubing.
6. **Plug #2 (Gallup Top: 5687' – 5587')**: Perforate 3 holes at 5687'. Establish rate into squeeze holes. RIH and set 4 1/2" CR at 5637'. Mix 51 sxs Class B cement, squeeze 39 sxs behind casing and leave 12 sxs inside casing to isolate Gallup top. PUH.
7. **Plug #3 (Mancos Top: 4888' - 4788')**: Mix 12 sxs Class B, spot on balanced plug inside casing to isolate Mancos top. TOH and LD tubing.
8. **Plug #4 (Mesaverde Top: <sup>3112' 3012'</sup>4480' - <sup>3112'</sup>4080')**: Perforate 3 holes at <sup>3112'</sup>4480'. Establish rate into squeeze holes. RIH and set 4 1/2" CR at <sup>3112'</sup>4480'. Mix 51 sxs Class B cement, squeeze 39 sxs behind casing and leave 12 sxs inside casing to isolate Mesaverde top. PUH.
9. **Plug #5 (Pictured Cliffs Top: <sup>2202' 2102'</sup>2251' - <sup>2102'</sup>2151')**: Mix 12 sxs Class B, spot on balanced plug inside casing to isolate Pictured Cliffs top. TOH and LD tubing.

10. **Plug #6 (Fruitland Top: <sup>1939</sup>1738' – <sup>1839</sup>1638')**: Mix 12 sxs Class B cement, spot on balanced plug inside casing to isolate Fruitland top. TOH and LD tubing
11. **Plug #7 (Kirtland and Ojo Alamo Tops: 1411' – 1152')**: Perforate 3 holes at 1411'. Establish rate into squeeze holes. RIH and set 4 ½ " CR at 1361'. Mix 124 sxs Class B cement, squeeze 100 sxs behind casing and leave 24 sxs inside casing to cover Kirtland and Ojo Alamo top. TOH and LD tubing.
12. **Plug #8 (8-5/8" casing shoe to surface: 278' – surface)**: Perforate 3 squeeze holes at 278'. Establish circulation out bradenhead with water and circulate the BH annulus clean. Mix 104 sxs Class B cement, squeeze 79 behind casing and leave 25 sxs inside casing. POH.
11. ND BOP and cut off wellhead below surface casing flange. Install P&A marker with cement to comply with regulations. RD, MOL and cut off anchors. Restore location per BLM stipulations.

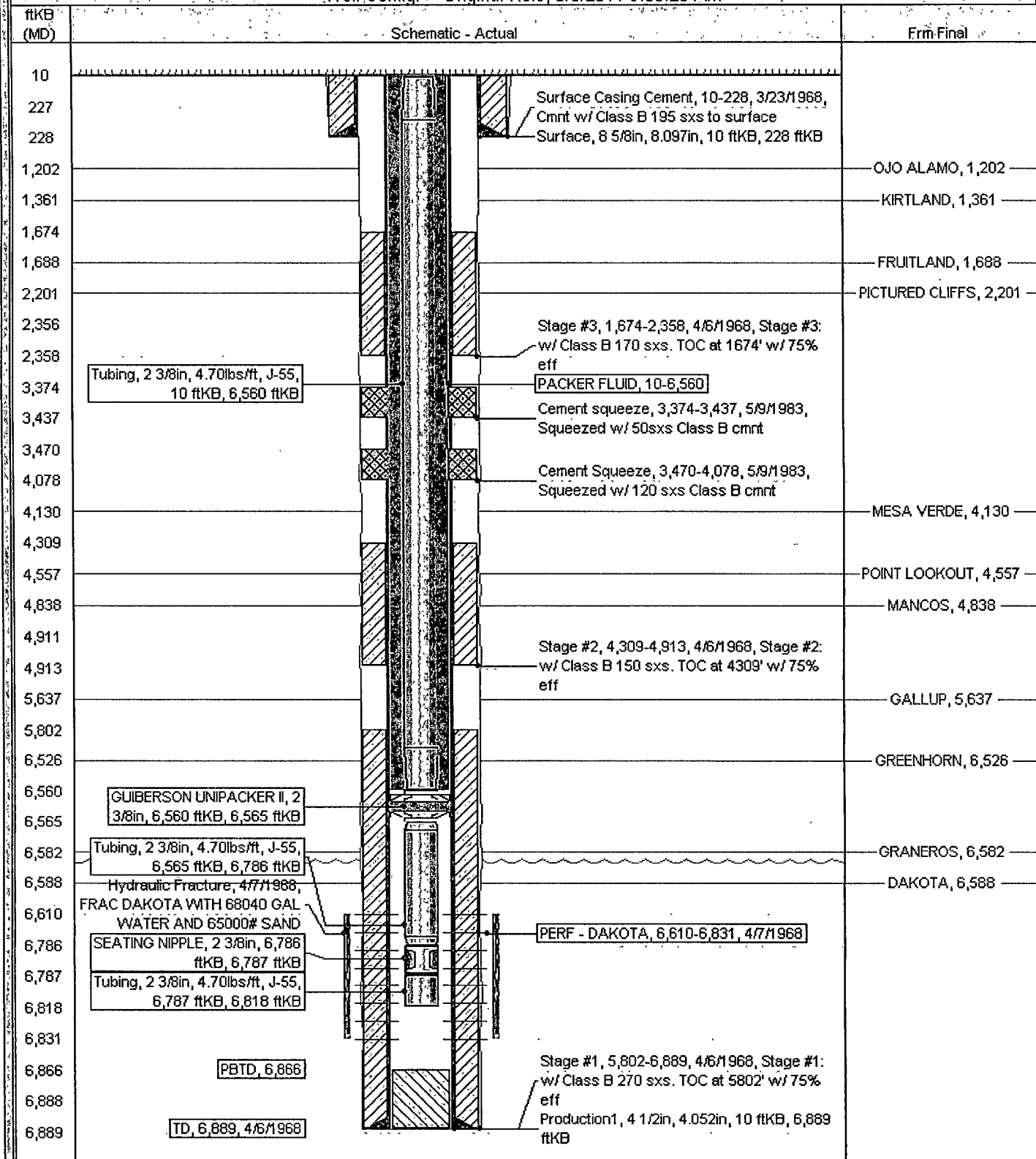
# Current Schematic

ConocoPhillips

Well Name: HUERFANO UNIT #174

API/UNL 3004520233	Surface Legal Location NMPM,013-026N-010W	Field Name BASIN DAKOTA (REGULATED GAS)	License No.	State/Province NEW MEXICO	Well Configuration Type	Edit
Grout Elevation (ft) 6,574.00	Original KB/RT Elevation (ft) 6,584.00	KB-Grout Distance (ft) 10.00	KB-Casing/Flange Distance (ft)	KB-Tubing Hanger Distance (ft)		

Well Config: - Original Hole, 8/8/2011 9:56:20 AM



Well Name: HUEREANO UNIT #174

Well Config - Original Hole, 1/1/2020		
ftKB (MD)	Frm Final	Schematic - Actual
10		Surface Casing Cement, 10-228, 3/23/1968, CEMENT WITH 195 SX CIRCULATED TO SURFACE
227		
228		
278		SQUEEZE PERFS, 278, 1/1/2020
1,152		Plug #8, 10-278, 1/1/2020
1,202	OJO ALAMO, 1,202	Plug #8, 10-278, 1/1/2020, Mix 104 sxs Class B cement, squeeze 79 behind casing and leave 25 sxs inside casing.
1,361	KIRTLAND, 1,361	SQUEEZE PERFS, 1,411, 1/1/2020
1,362		Plug #7, 1,152-1,411, 1/1/2020, Mix 124 sxs Class B cement, squeeze 100 sxs behind casing and leave 24 sxs inside casing to cover Kirtland ad Ojo Alamo top.
1,411		SQUEEZE PERFS, 1,411, 1/1/2020
1,638		Plug #7, 1,152-1,411, 1/1/2020
1,674		Plug #6, 1,638-1,738, 1/1/2020, Mix 12 sxs Class B, spot on balanced plug inside casing to isolate Fruitland top.
1,688	FRUITLAND, 1,688	Plug #5, 2,151-2,251, 1/1/2020, Mix 12 sxs Class B, spot on balanced plug inside casing to isolate Pictured Cliffs top.
1,738		Casing cement, 1,674-2,358, 4/6/1968, CEMENT WITH 170 SX TOC CALC AT 75% EFF
2,151		Cement squeeze, 3,374-3,437, 5/9/1983, SQUEEZE HOLES IN CASING WITH 50 SX
2,201	PICTURED CLIFFS, 2,201	Cement Squeeze, 3,470-4,078, 5/9/1983, SQUEEZE HOLES IN CASING WITH 120 SX
2,251		SQUEEZE PERFS, 4,180, 1/1/2020
2,356		Plug #4, 4,080-4,180, 1/1/2020
2,358		Plug #4, 4,080-4,180, 1/1/2020, Mix 51 sxs Class B cement, squeeze 39 sxs behind casing and leave 12 sxs inside casing to isolate Mesaverde top
3,374		Plug #4, 4,080-4,180, 1/1/2020, Mix 51 sxs Class B cement, squeeze 39 sxs behind casing and leave 12 sxs inside casing to isolate Mesaverde top
3,437		Plug #3, 4,788-4,888, 1/1/2020, Mix 12 sxs Class B, spot on balanced plug inside casing to isolate Mancos top.
3,470		Casing cement, 4,309-4,913, 4/6/1968, CEMENT WITH 150 SX TOC CALC AT 75% EFF
4,078		SQUEEZE PERFS, 5,687, 1/1/2020
4,080		Plug #2, 5,587-5,687, 1/1/2020, Mix 51 sxs Class B cement, squeeze 39 sxs behind casing and leave 12 sxs inside casing to isolate Gallup top.
4,130	MESA VERDE, 4,130	Plug #2, 5,587-5,687, 1/1/2020
4,131		Plug #1, 6,460-6,560, 1/1/2020, Mix 12 sxs of Class B cement and spot above CIBP to cover Dakota perforations and top.
4,180		PERF DAKOTA, 6,610-6,831, 4/7/1968
4,309	POINT LOOKOUT, 4,557	
4,557		
4,788	MANCOS, 4,838	
4,838		
4,888		
4,911		
4,913		
5,587		
5,637	GALLUP, 5,637	
5,638		
5,687		
5,802		
6,460	GREENHORN, 6,526	
6,526		
6,560		
6,561		
6,565		
6,582	GRANEROS, 6,582	
6,588	DAKOTA, 6,588	
6,610		
6,786		
6,787		
6,818		
6,831		
6,866		
6,888		
6,889		

UNITED STATES DEPARTMENT OF THE INTERIOR  
BUREAU OF LAND MANAGEMENT  
FARMINGTON DISTRICT OFFICE  
1235 LA PLATA HIGHWAY  
FARMINGTON, NEW MEXICO 87401

Attachment to notice of  
Intention to Abandon:

Re: Permanent Abandonment  
Well: 174 Huerfano Unit

CONDITIONS OF APPROVAL

1. Plugging operations authorized are subject to the attached "General Requirements for Permanent Abandonment of Wells on Federal and Indian Lease."
2. Farmington Office is to be notified at least 24 hours before the plugging operations commence (505) 599-8907.
3. The following modifications to your plugging program are to be made:
  - a) Place the Mesaverde plug from 3112' – 3012' inside and outside the 4 ½" casing.
  - b) Place the Pictured Cliffs plug from 2202' – 2102'.
  - c) Place the Fruitland plug from 1939' – 1839'.

\* Bring top of Mesaverde plug to 3008' (3112' - 3008')

\* Bring top of Mancos plug to 4772' (4888' - 4772')

You are also required to place cement excesses per 4.2 and 4.4 of the attached General Requirements.

Office Hours: 7:45 a.m. to 4:30 p.m.