

**UNITED STATES  
DEPARTMENT OF THE INTERIOR  
BUREAU OF LAND MANAGEMENT**

## Sundry Notices and Reports on Wells

OCT 21 2011  
Farmington Field Office  
Bureau of Land Management

1. Type of Well  
GAS

5. Lease Number  
SF-078439  
6. If Indian, All. or  
Tribe Name  
7. Unit Agreement Name

2. Name of Operator  
**BURLINGTON**  
RESOURCES OIL & GAS COMPANY LP

3. Address & Phone No. of Operator

PO Box 4289, Farmington, NM 87499 (505) 326-9700

8. Well Name & Number  
Johnston Federal 30

9. API Well No.  
30-045-29905

4. Location of Well, Footage, Sec., T, R, M

Unit O (SWSE), 1180' FSL & 1605' FEL, Section 35, T31N, R9W, NMPM

10. Field and Pool  
Basin Dakota

11. County and State  
San Juan, NM

## 12. CHECK APPROPRIATE BOX TO INDICATE NATURE OF NOTICE, REPORT, OTHER DATA

## Type of Submission

☒ Notice of Intent

☐ Subsequent Report

☐ Final Abandonment

## Type of Action

☒ Abandonment

☐ Recompletion

☐ Plugging

☐ Casing Repair

☐ Altering Casing

☐ Change of Plans

☐ New Construction

☐ Non-Routine Fracturing

☐ Water Shut off

☐ Conversion to Injection

☐ Other -

## 13. Describe Proposed or Completed Operations

Burlington Resources requests permission to P&A the subject well per the attached procedure, current and proposed wellbore schematics.

RCVD OCT 27 '11

OIL CONS. DIV.

DIST. 3

## 14. I hereby certify that the foregoing is true and correct.

Signed Crystal Tafoya Crystal Tafoya

Title: Staff Regulatory Technician

Date 10/20/11

(This space for Federal or State Office use)

APPROVED BY Original Signed: Stephen Mason

Title

Date

OCT 24 2011

CONDITION OF APPROVAL, if any:

Title 18 U.S.C. Section 1001, makes it a crime for any person knowingly and willfully to make any department or agency of the United States any false, fictitious or fraudulent statements or representations as to any matter within its jurisdiction

NMOCD

**ConocoPhillips**  
**JOHNSTON FEDERAL 30**  
**Expense - P&A**

Lat 36° 51' 2.016" N

Long 107° 44' 45.96" W

**PROCEDURE**

This project requires a NMOCD C-144 CLEZ Closed-Loop System Permit for the use of an A-Plus steel tank to handle waste fluids circulated from the well and cement wash up.

1. Hold pre-job safety meeting. Comply with all NMOCD, BLM, and COPC safety and environmental regulations. Test rig anchors prior to moving in rig.
2. MIRU work over rig. Check casing, tubing, and bradenhead pressures and record them in Wellview.
3. When an existing primary valve (i.e. casing valve) is to be used, the existing piping should be removed and replaced with the appropriate piping for the intended operation.
4. RU blow lines from casing valves and begin blowing down casing pressure. Kill well with water, as necessary, and at least pump tubing capacity of water down tubing.
5. ND wellhead and NU BOPE. Function test BOP. PU and remove tubing hanger.
6. TOOH with tubing (per pertinent data sheet). LD tubing bailer (if applicable).

Rods:	No	Size:		Length:	
Tubing:	Yes	Size:	2-3/8"	Length:	5540
Packer:	No	Size:		Depth:	

7. Round trip casing scraper through deepest perforation or as deep as possible.

All cement volumes use 100% excess outside pipe and 50' excess inside pipe. The stabilizing wellbore fluid will be 8.3 ppg, sufficient to balance all exposed formation pressures. All cement will be ASTM Type II mixed at 15.6 ppg with a 1.18 cf/sk yield.

**8. Plug 1 (Mancos Top, 5326-5426', 12 Sacks Class B Cement)**

Pressure test tubing to 1000#. Load casing with water and circulate well clean. Pressure test casing to 1000#. If the casing does not test, then spot or tag subsequent plugs as appropriate. Mix 12 sxs Class B cement and spot a balanced plug inside the casing to cover the Mancos top. PUH

**9. Plug 2 (Mesaverde Top, 4220-4320', 12 Sacks Class B Cement)**

Mix 12 sxs Class B cement and spot a balanced plug inside the casing to cover the Mesaverde top. PUH

**10. Plug 3 (Chacra Top, 3569-3669', 12 Sacks Class B Cement)**

Mix 12 sxs Class B cement and spot a balanced plug inside the casing to cover the Chacra top. PUH

**11. Plug 4 (Intermediate Shoe, 3039-3139', 26 Sacks Class B Cement)**

Perforate 3 squeeze holes at 3080'. RIH with 4-1/2" cement retainer and set at 3075'. Establish rate into the squeeze holes. Mix 26 sxs Class B cement. Squeeze 14 sxs cement outside the casing and leave 12 sxs inside the casing to cover the intermediate casing shoe. TOOH

**12. Plug 5 (Pictured Cliffs & Fruitland Tops, 2420-2750', 114 Sacks Class B Cement)**

Perforate 3 squeeze holes at 2750'. RIH with 4-1/2" cement retainer and set at 2700'. Establish rate into the squeeze holes. Mix 114 sxs Class B cement. Squeeze 63 sxs cement outside the casing and leave 51 sxs inside the casing to cover the Pictured Cliffs and Fruitland tops. TOOH

**13. Plug 6 (Kirtland and Ojo Alamo Tops, 1392-1646', 53 Sacks Class B Cement)**

Perforate 3 squeeze holes at 1636'. RIH with 4-1/2" cement retainer and set at 1596'. Establish rate into the squeeze holes. Mix 53 sxs Class B cement. Squeeze 29 sxs cement outside the casing and leave 24 sxs inside the casing to cover the Kirtland and Ojo Alamo tops. TOOH

**14. Plug 7 (Surface Shoe to Surface, 0-293', 60 Sacks Class B Cement)**

Perforate 3 squeeze holes at 293'. Establish rate into the squeeze holes. Mix 60 sxs Class B cement. Squeeze 33 sxs outside the casing and leave 27 sxs in the casing to cover the surface casing shoe, Nacimiento top and form a surface plug from 293' to surface. Circulate good cement out the casing valve. TOOH and LD tubing. Shut in well and WOC.

15. Nipple down BOP and cut off casing below the casing flange. Install P&A marker with cement to comply with regulations. Rig down, move off location, cut off anchors, and restore location.

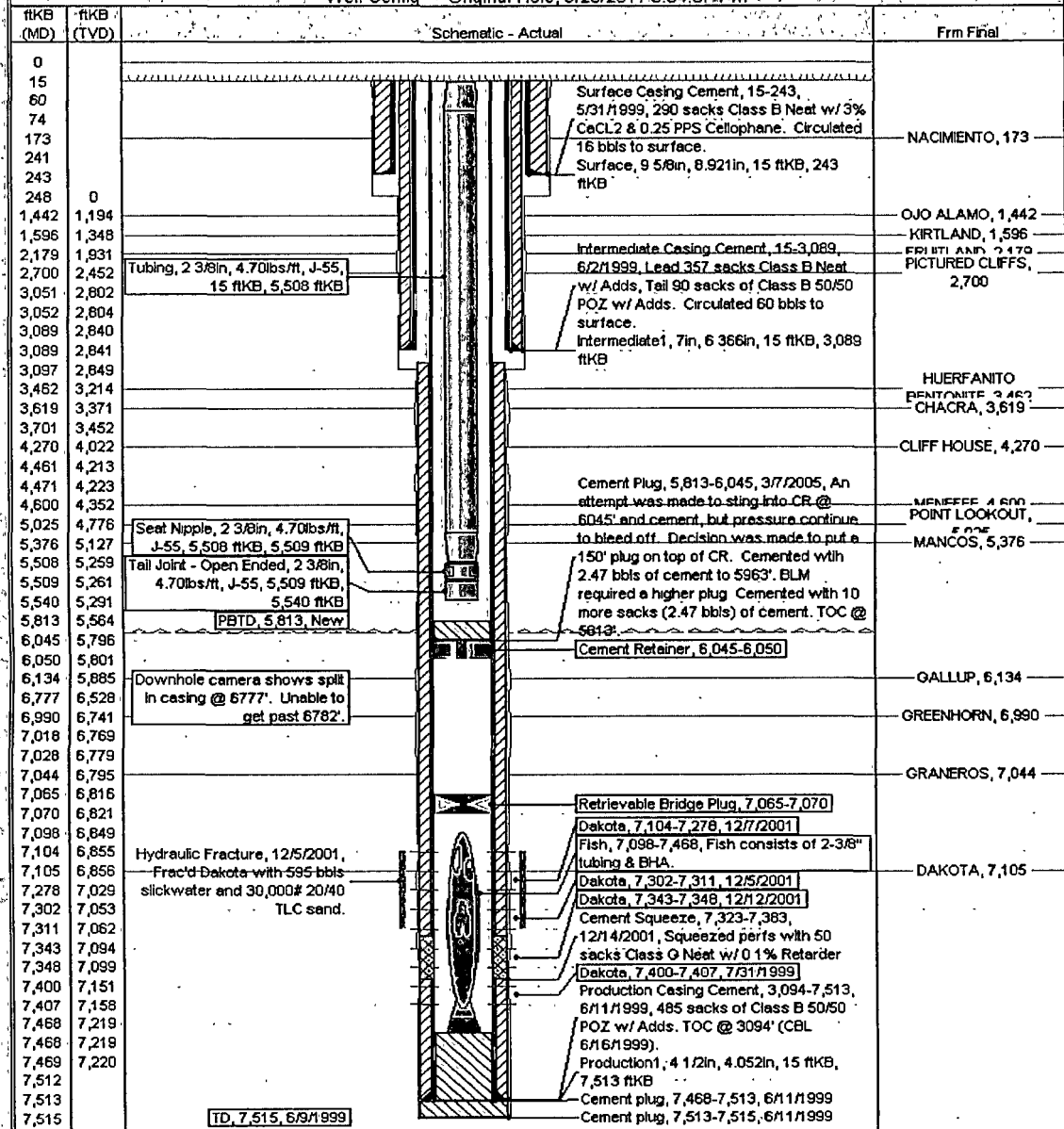
ConocoPhillips

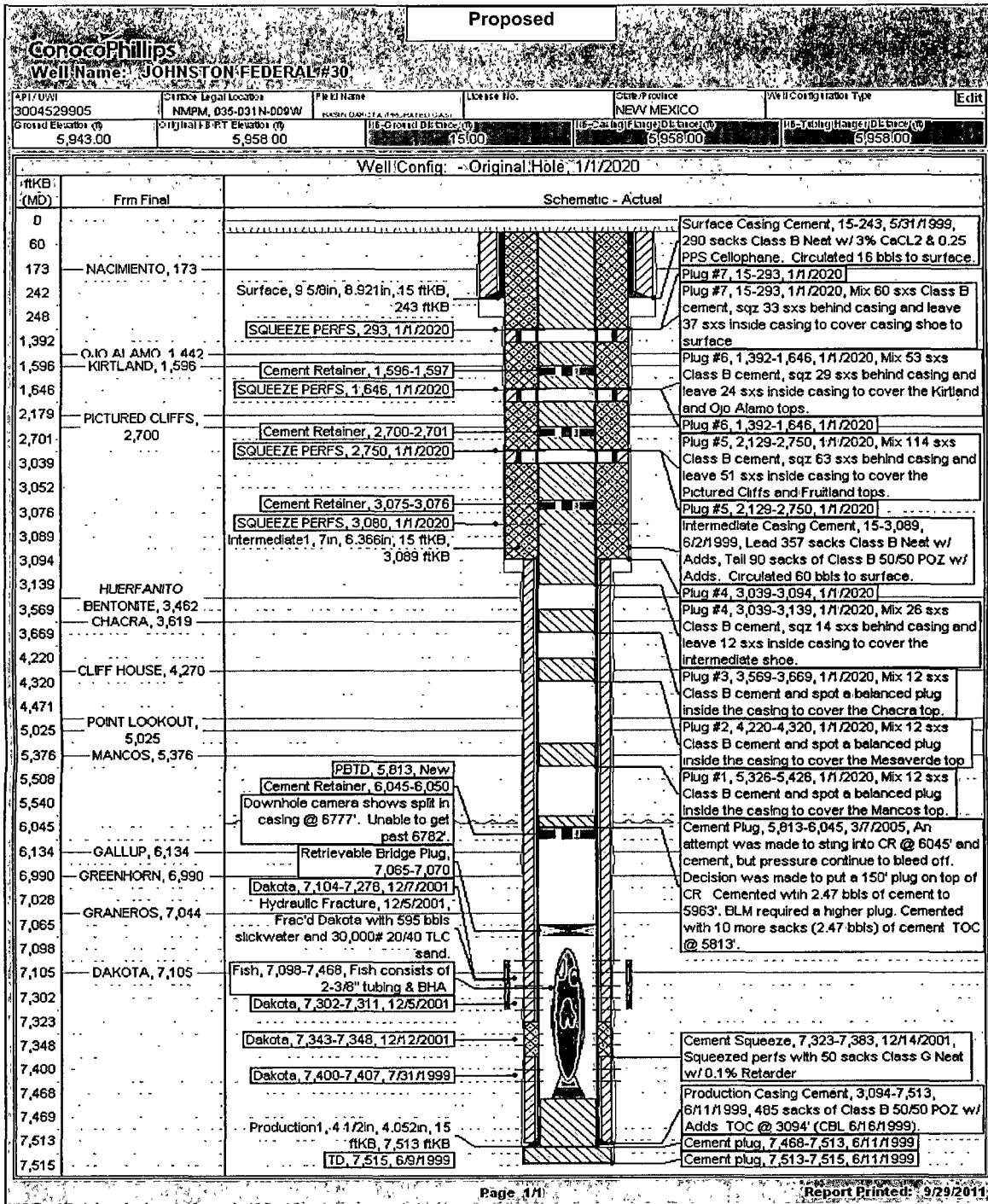
# CURRENT SCHEMATIC

## JOHNSTON FEDERAL #30

District NORTH	Field Name BASIN DAKOTA (PRORATED GAS)	API / UWI 3004529905	County SAN JUAN	State/Province NEW MEXICO	Edit
Original Spud Date 5/30/1999	Surface Legal Location NMPM, 035-031N-009W	EAW Dist (ft) 1,605.00	EAW Ref E	N/S Dist (ft) 1,180.00	N/S Ref S

Well Config - Original Hole, 9/28/2011 6:34:37 PM





**UNITED STATES DEPARTMENT OF THE INTERIOR  
BUREAU OF LAND MANAGEMENT  
FARMINGTON DISTRICT OFFICE  
1235 LA PLATA HIGHWAY  
FARMINGTON, NEW MEXICO 87401**

Attachment to notice of  
Intention to Abandon:

Re: Permanent Abandonment  
Well: 30 Johnston Federal

**CONDITIONS OF APPROVAL**

1. Plugging operations authorized are subject to the attached "General Requirements for Permanent Abandonment of Wells on Federal and Indian Lease."
2. Farmington Office is to be notified at least 24 hours before the plugging operations commence (505) 599-8907.
3. The following modifications to your plugging program are to be made:
  - a) Place the Chacra plug from 3513' – 3413'.
  - b) Place the Pictured Cliffs/Fruitland plug from 2788' – 2356' inside and outside the 4 ½" casing.
  - c) Place the Kirtland/Ojo Alamo plug from 1630' – 1367' inside and outside the 4 ½" casing.

You are also required to place cement excesses per 4.2 and 4.4 of the attached General Requirements.

Office Hours: 7:45 a.m. to 4:30 p.m.