

DISTRICT I
1625 N. French Dr., Hobbs, N.M. 88240

DISTRICT II
1301 West Grand Avenue, Artesia, N.M. 88210

DISTRICT III
1000 Rio Brazos Rd., Aztec, N.M. 87410

DISTRICT IV
1220 S. St. Francis Dr., Santa Fe, NM 87505

State of New Mexico
Energy, Minerals & Natural Resources Department

OIL CONSERVATION DIVISION

1220 South St. Francis Dr.
Santa Fe, NM 87505

AS DRILLED PLAT

RCVD DEC 19 '11

OIL CONS. DIV Form C-102
Revised July 16, 2010
Submit one copy to appropriate
District Office

☐ AMENDED REPORT

WELL LOCATION AND ACREAGE DEDICATION PLAT

¹ API Number 30-045-35292	² Pool Code 71629	³ Pool Name Basin FRUITLAND COAL
⁴ Property Code 38677	⁵ Property Name SAN JUAN 32-5 UNIT	⁶ Well Number 118H
⁷ GRID No. 217817	⁸ Operator Name CONOCOPHILLIPS COMPANY	⁹ Elevation 6385'

¹⁰ Surface Location

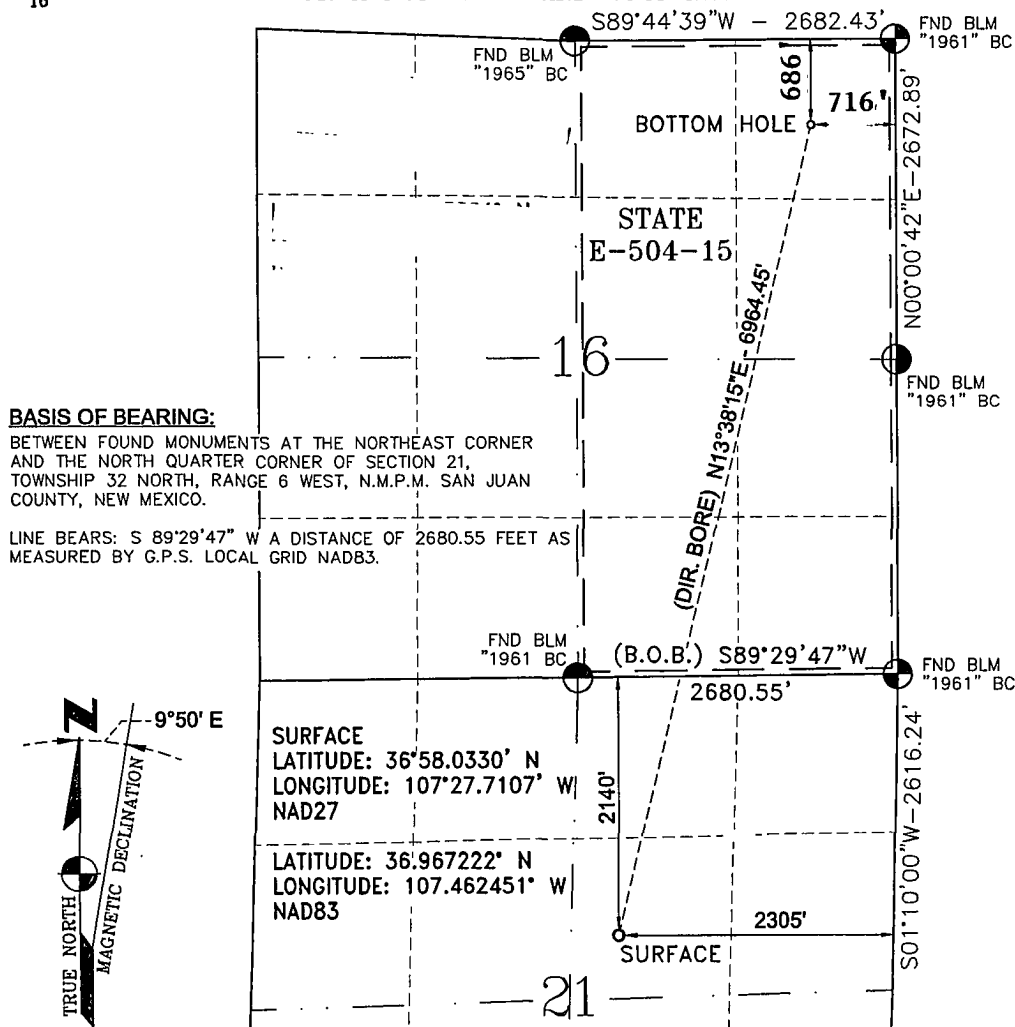
UL or lot no.	Section	Township	Range	Lot Idn	Feet from the	North/South line	Feet from the	East/West line	County
G	21	32-N	6-W		2140	NORTH	2305	EAST	SAN JUAN

¹¹ Bottom Hole Location If Different From Surface

UL or lot no.	Section	Township	Range	Lot Idn	Feet from the	North/South line	Feet from the	East/West line	County
A	16	32-N	6-W		686'	NORTH	716'	EAST	SAN JUAN
¹² Dedicated Acres FC 320.00 ACRES E/2			¹³ Joint or Infill		¹⁴ Consolidation Code		¹⁵ Order No.		

NO ALLOWABLE WILL BE ASSIGNED TO THIS COMPLETION UNTIL ALL INTERESTS HAVE BEEN CONSOLIDATED
OR A NON-STANDARD UNIT HAS BEEN APPROVED BY THE DIVISION

16



17 OPERATOR CERTIFICATION

I hereby certify that the information contained herein
is true and complete to the best of my knowledge and
belief, and that this organization either owns
a working interest or unleased mineral interest in the
land including the proposed bottom hole location or
has a right to drill this well at this location pursuant
to a contract with an owner of such a mineral or
a working interest, or to a voluntary pooling agreement
or a compulsory pooling order heretofore entered by the
division.

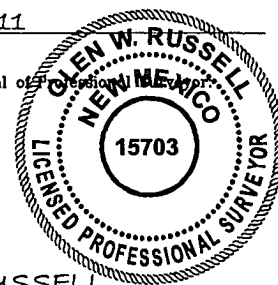
Signature: *Marie E. Jaramillo* Date: 12/16/11
Printed Name: Marie E. Jaramillo
Regulatory Tech.
E-mail Address:

18 SURVEYOR CERTIFICATION

I hereby certify that the well location shown on this plat
was plotted from field notes of actual surveys made by
me or under my supervision, and that the same is true
and correct to the best of my belief.

March 3, 2011
Date of Survey

Signature and Seal of



GLEN W. RUSSELL
Certificate Number

15703