

District I
1625 N French Dr, Hobbs, NM 88240
District II
1301 W Grand Avenue, Artesia, NM 88210
District III
1000 Rio Brazos Road, Aztec, NM 87410
District IV
1220 S. St. Francis Dr., Santa Fe, NM 87505

State of New Mexico
Energy Minerals and Natural Resources
Department
Oil Conservation Division
1220 South St. Francis Dr.
Santa Fe, NM 87505

Form C-144
July 21, 2008

For temporary pits, closed-loop systems, and below-grade tanks, submit to the appropriate NMOCD District Office.
For permanent pits and exceptions submit to the Santa Fe Environmental Bureau office and provide a copy to the appropriate NMOCD District Office.

1733
Pit, Closed-Loop System, Below-Grade Tank, or
Proposed Alternative Method Permit or Closure Plan Application

Type of action: ☒ Permit of a pit, closed-loop system, below-grade tank, or proposed alternative method
☐ Closure of a pit, closed-loop system, below-grade tank, or proposed alternative method
☐ Modification to an existing permit
☒ Closure plan only submitted for an existing permitted or non-permitted pit, closed-loop system, below-grade tank, or proposed alternative method

Instructions: Please submit one application (Form C-144) per individual pit, closed-loop system, below-grade tank or alternative request

Please be advised that approval of this request does not relieve the operator of liability should operations result in pollution of surface water, ground water or the environment. Nor does approval relieve the operator of its responsibility to comply with any other applicable governmental authority's rules, regulations or ordinances.

1.
Operator: Dugan Production Corp. OGRID #: 006515
Address: 709 East Murray Drive, Farmington, New Mexico 87401
Facility or well name: Western Federal Com #90
API Number: 30-045-33903 OCD Permit Number: _____
U/L or Qtr/Qtr A Section 7 Township 26N Range 11W County: San Juan
Center of Proposed Design: Latitude 36.50672 North Longitude 108.04019 West NAD: ☐ 1927 ☒ 1983
Surface Owner: ☐ Federal ☐ State ☐ Private ☒ Tribal Trust or Indian Allotment

2.
☐ **Pit:** Subsection F or G of 19.15.17.11 NMAC
Temporary: ☐ Drilling ☐ Workover
☐ Permanent ☐ Emergency ☐ Cavitation ☐ P&A
☐ Lined ☐ Unlined Liner type: Thickness _____ mil ☐ LLDPE ☐ HDPE ☐ PVC ☐ Other _____
☐ String-Reinforced
Liner Seams: ☐ Welded ☐ Factory ☐ Other _____ Volume: _____ bbl Dimensions: L _____ x W _____ x D _____

3.
☐ **Closed-loop System:** Subsection H of 19.15.17.11 NMAC
Type of Operation: ☐ P&A ☐ Drilling a new well ☐ Workover or Drilling (Applies to activities which require prior approval of a permit or notice of intent)
☐ Drying Pad ☐ Above Ground Steel Tanks ☐ Haul-off Bins ☐ Other _____
☐ Lined ☐ Unlined Liner type: Thickness _____ mil ☐ LLDPE ☐ HDPE ☐ PVC ☐ Other _____
Liner Seams: ☐ Welded ☐ Factory ☐ Other _____

4.
☒ **Below-grade tank:** Subsection I of 19.15.17.11 NMAC
Volume: 95 bbl Type of fluid: Produced Water
Tank Construction material: Steel
☐ Secondary containment with leak detection ☒ Visible sidewalls, liner, 6-inch lift and automatic overflow shut-off
☐ Visible sidewalls and liner ☐ Visible sidewalls only ☐ Other _____
Liner type: Thickness 60 mil ☒ HDPE ☐ PVC ☐ Other _____

5.
☐ **Alternative Method:**
Submittal of an exception request is required. Exceptions must be submitted to the Santa Fe Environmental Bureau office for consideration of approval



6.

Fencing: Subsection D of 19.15.17.11 NMAC (*Applies to permanent pits, temporary pits, and below-grade tanks*)

- ☐ Chain link, six feet in height, two strands of barbed wire at top (*Required if located within 1000 feet of a permanent residence, school, hospital, institution or church*)
- ☐ Four foot height, four strands of barbed wire evenly spaced between one and four feet
- ☒ Alternate. Please specify 4' = 3' Hog Wire + Top Rail

7.

Netting: Subsection E of 19.15.17.11 NMAC (*Applies to permanent pits and permanent open top tanks*)

- ☒ Screen ☐ Netting ☐ Other _____
- ☒ Monthly inspections (If netting or screening is not physically feasible)

8.

Signs: Subsection C of 19.15.17.11 NMAC

- ☒ 12"x 24", 2" lettering, providing Operator's name, site location, and emergency telephone numbers
- ☐ Signed in compliance with 19.15.3.103 NMAC

9.

Administrative Approvals and Exceptions:

Justifications and/or demonstrations of equivalency are required. Please refer to 19.15.17 NMAC for guidance.

Please check a box if one or more of the following is requested, if not leave blank:

- ☒ Administrative approval(s): Requests must be submitted to the appropriate division district or the Santa Fe Environmental Bureau office for consideration of approval.
- ☐ Exception(s): Requests must be submitted to the Santa Fe Environmental Bureau office for consideration of approval.

10.

Siting Criteria (regarding permitting): 19.15.17.10 NMAC

Instructions: The applicant must demonstrate compliance for each siting criteria below in the application. Recommendations of acceptable source material are provided below. Requests regarding changes to certain siting criteria may require administrative approval from the appropriate district office or may be considered an exception which must be submitted to the Santa Fe Environmental Bureau office for consideration of approval. Applicant must attach justification for request. Please refer to 19.15.17.10 NMAC for guidance. Siting criteria does not apply to drying pads or above-grade tanks associated with a closed-loop system.

Ground water is less than 50 feet below the bottom of the temporary pit, permanent pit, or below-grade tank. - NM Office of the State Engineer - iWATERS database search; USGS; Data obtained from nearby wells	<input type="checkbox"/> Yes <input checked="" type="checkbox"/> No
Within 300 feet of a continuously flowing watercourse, or 200 feet of any other significant watercourse or lakebed, sinkhole, or playa lake (measured from the ordinary high-water mark). - Topographic map; Visual inspection (certification) of the proposed site	<input type="checkbox"/> Yes <input checked="" type="checkbox"/> No
Within 300 feet from a permanent residence, school, hospital, institution, or church in existence at the time of initial application. (<i>Applies to temporary, emergency, or cavitation pits and below-grade tanks</i>) - Visual inspection (certification) of the proposed site; Aerial photo; Satellite image	<input type="checkbox"/> Yes <input checked="" type="checkbox"/> No <input type="checkbox"/> NA
Within 1000 feet from a permanent residence, school, hospital, institution, or church in existence at the time of initial application. (<i>Applies to permanent pits</i>) - Visual inspection (certification) of the proposed site; Aerial photo; Satellite image	<input type="checkbox"/> Yes <input checked="" type="checkbox"/> No <input type="checkbox"/> NA
Within 500 horizontal feet of a private, domestic fresh water well or spring that less than five households use for domestic or stock watering purposes, or within 1000 horizontal feet of any other fresh water well or spring, in existence at the time of initial application. - NM Office of the State Engineer - iWATERS database search; Visual inspection (certification) of the proposed site	<input type="checkbox"/> Yes <input checked="" type="checkbox"/> No
Within incorporated municipal boundaries or within a defined municipal fresh water well field covered under a municipal ordinance adopted pursuant to NMSA 1978, Section 3-27-3, as amended. - Written confirmation or verification from the municipality; Written approval obtained from the municipality	<input type="checkbox"/> Yes <input checked="" type="checkbox"/> No
Within 500 feet of a wetland. - US Fish and Wildlife Wetland Identification map; Topographic map; Visual inspection (certification) of the proposed site	<input type="checkbox"/> Yes <input checked="" type="checkbox"/> No
Within the area overlying a subsurface mine. - Written confirmation or verification or map from the NM EMNRD-Mining and Mineral Division	<input type="checkbox"/> Yes <input checked="" type="checkbox"/> No
Within an unstable area. - Engineering measures incorporated into the design; NM Bureau of Geology & Mineral Resources; USGS; NM Geological Society; Topographic map	<input type="checkbox"/> Yes <input checked="" type="checkbox"/> No
Within a 100-year floodplain. - FEMA map	<input type="checkbox"/> Yes <input checked="" type="checkbox"/> No

11.

Temporary Pits, Emergency Pits, and Below-grade Tanks Permit Application Attachment Checklist: Subsection B of 19.15.17.9 NMAC**Instructions:** Each of the following items must be attached to the application. Please indicate, by a check mark in the box, that the documents are attached.

- ☒ Hydrogeologic Report (Below-grade Tanks) - based upon the requirements of Paragraph (4) of Subsection B of 19.15.17.9 NMAC
- ☐ Hydrogeologic Data (Temporary and Emergency Pits) - based upon the requirements of Paragraph (2) of Subsection B of 19.15.17.9 NMAC
- ☒ Siting Criteria Compliance Demonstrations - based upon the appropriate requirements of 19.15.17.10 NMAC
- ☒ Design Plan - based upon the appropriate requirements of 19.15.17.11 NMAC
- ☒ Operating and Maintenance Plan - based upon the appropriate requirements of 19.15.17.12 NMAC
- ☒ Closure Plan (Please complete Boxes 14 through 18, if applicable) - based upon the appropriate requirements of Subsection C of 19.15.17.9 NMAC and 19.15.17.13 NMAC

☐ Previously Approved Design (attach copy of design) API Number: _____ or Permit Number: _____

12.

Closed-loop Systems Permit Application Attachment Checklist: Subsection B of 19.15.17.9 NMAC**Instructions:** Each of the following items must be attached to the application. Please indicate, by a check mark in the box, that the documents are attached.

- ☐ Geologic and Hydrogeologic Data (only for on-site closure) - based upon the requirements of Paragraph (3) of Subsection B of 19.15.17.9
- ☐ Siting Criteria Compliance Demonstrations (only for on-site closure) - based upon the appropriate requirements of 19.15.17.10 NMAC
- ☐ Design Plan - based upon the appropriate requirements of 19.15.17.11 NMAC
- ☐ Operating and Maintenance Plan - based upon the appropriate requirements of 19.15.17.12 NMAC
- ☐ Closure Plan (Please complete Boxes 14 through 18, if applicable) - based upon the appropriate requirements of Subsection C of 19.15.17.9 NMAC and 19.15.17.13 NMAC

☐ Previously Approved Design (attach copy of design) API Number: _____

☐ Previously Approved Operating and Maintenance Plan API Number: _____ (Applies only to closed-loop system that use above ground steel tanks or haul-off bins and propose to implement waste removal for closure)

13.

Permanent Pits Permit Application Checklist: Subsection B of 19.15.17.9 NMAC**Instructions:** Each of the following items must be attached to the application. Please indicate, by a check mark in the box, that the documents are attached.

- ☐ Hydrogeologic Report - based upon the requirements of Paragraph (1) of Subsection B of 19.15.17.9 NMAC
- ☐ Siting Criteria Compliance Demonstrations - based upon the appropriate requirements of 19.15.17.10 NMAC
- ☐ Climatological Factors Assessment
- ☐ Certified Engineering Design Plans - based upon the appropriate requirements of 19.15.17.11 NMAC
- ☐ Dike Protection and Structural Integrity Design - based upon the appropriate requirements of 19.15.17.11 NMAC
- ☐ Leak Detection Design - based upon the appropriate requirements of 19.15.17.11 NMAC
- ☐ Liner Specifications and Compatibility Assessment - based upon the appropriate requirements of 19.15.17.11 NMAC
- ☐ Quality Control/Quality Assurance Construction and Installation Plan
- ☐ Operating and Maintenance Plan - based upon the appropriate requirements of 19.15.17.12 NMAC
- ☐ Freeboard and Overtopping Prevention Plan - based upon the appropriate requirements of 19.15.17.11 NMAC
- ☐ Nuisance or Hazardous Odors, including H₂S, Prevention Plan
- ☐ Emergency Response Plan
- ☐ Oil Field Waste Stream Characterization
- ☐ Monitoring and Inspection Plan
- ☐ Erosion Control Plan
- ☐ Closure Plan - based upon the appropriate requirements of Subsection C of 19.15.17.9 NMAC and 19.15.17.13 NMAC

14.

Proposed Closure: 19.15.17.13 NMAC**Instructions:** Please complete the applicable boxes, Boxes 14 through 18, in regards to the proposed closure plan.

Type: ☐ Drilling ☐ Workover ☐ Emergency ☐ Cavitation ☐ P&A ☐ Permanent Pit ☒ Below-grade Tank ☐ Closed-loop System

☐ Alternative

Proposed Closure Method: ☒ Waste Excavation and Removal

☐ Waste Removal (Closed-loop systems only)

☐ On-site Closure Method (Only for temporary pits and closed-loop systems)

☐ In-place Burial ☐ On-site Trench Burial

☐ Alternative Closure Method (Exceptions must be submitted to the Santa Fe Environmental Bureau for consideration)

15.

Waste Excavation and Removal Closure Plan Checklist: (19.15.17.13 NMAC) **Instructions:** Each of the following items must be attached to the closure plan. Please indicate, by a check mark in the box, that the documents are attached.

- ☒ Protocols and Procedures - based upon the appropriate requirements of 19.15.17.13 NMAC
- ☒ Confirmation Sampling Plan (if applicable) - based upon the appropriate requirements of Subsection F of 19.15.17.13 NMAC
- ☒ Disposal Facility Name and Permit Number (for liquids, drilling fluids and drill cuttings)
- ☒ Soil Backfill and Cover Design Specifications - based upon the appropriate requirements of Subsection H of 19.15.17.13 NMAC
- ☒ Re-vegetation Plan - based upon the appropriate requirements of Subsection I of 19.15.17.13 NMAC
- ☒ Site Reclamation Plan - based upon the appropriate requirements of Subsection G of 19.15.17.13 NMAC

16.

Waste Removal Closure For Closed-loop Systems That Utilize Above Ground Steel Tanks or Haul-off Bins Only: (19.15.17.13.D NMAC)

Instructions: Please indentify the facility or facilities for the disposal of liquids, drilling fluids and drill cuttings. Use attachment if more than two facilities are required.

Disposal Facility Name: _____ Disposal Facility Permit Number: _____

Disposal Facility Name: _____ Disposal Facility Permit Number: _____

Will any of the proposed closed-loop system operations and associated activities occur on or in areas that *will not* be used for future service and operations?

☐ Yes (If yes, please provide the information below) ☐ No

Required for impacted areas which will not be used for future service and operations:

☐ Soil Backfill and Cover Design Specifications - based upon the appropriate requirements of Subsection H of 19.15.17.13 NMAC

☐ Re-vegetation Plan - based upon the appropriate requirements of Subsection I of 19.15.17.13 NMAC

☐ Site Reclamation Plan - based upon the appropriate requirements of Subsection G of 19.15.17.13 NMAC

17.

Siting Criteria (regarding on-site closure methods only): 19.15.17.10 NMAC

Instructions: Each siting criteria requires a demonstration of compliance in the closure plan. Recommendations of acceptable source material are provided below. Requests regarding changes to certain siting criteria may require administrative approval from the appropriate district office or may be considered an exception which must be submitted to the Santa Fe Environmental Bureau office for consideration of approval. Justifications and/or demonstrations of equivalency are required. Please refer to 19.15.17.10 NMAC for guidance.

Ground water is less than 50 feet below the bottom of the buried waste.

- NM Office of the State Engineer - iWATERS database search; USGS; Data obtained from nearby wells

☐ Yes ☐ No

☐ NA

Ground water is between 50 and 100 feet below the bottom of the buried waste

- NM Office of the State Engineer - iWATERS database search; USGS; Data obtained from nearby wells

☐ Yes ☐ No

☐ NA

Ground water is more than 100 feet below the bottom of the buried waste.

- NM Office of the State Engineer - iWATERS database search; USGS; Data obtained from nearby wells

☐ Yes ☐ No

☐ NA

Within 300 feet of a continuously flowing watercourse, or 200 feet of any other significant watercourse or lakebed, sinkhole, or playa lake (measured from the ordinary high-water mark).

- Topographic map; Visual inspection (certification) of the proposed site

☐ Yes ☐ No

Within 300 feet from a permanent residence, school, hospital, institution, or church in existence at the time of initial application.

- Visual inspection (certification) of the proposed site; Aerial photo; Satellite image

☐ Yes ☐ No

Within 500 horizontal feet of a private, domestic fresh water well or spring that less than five households use for domestic or stock watering purposes, or within 1000 horizontal feet of any other fresh water well or spring, in existence at the time of initial application.

- NM Office of the State Engineer - iWATERS database; Visual inspection (certification) of the proposed site

☐ Yes ☐ No

Within incorporated municipal boundaries or within a defined municipal fresh water well field covered under a municipal ordinance adopted pursuant to NMSA 1978, Section 3-27-3, as amended.

- Written confirmation or verification from the municipality; Written approval obtained from the municipality

☐ Yes ☐ No

Within 500 feet of a wetland.

- US Fish and Wildlife Wetland Identification map; Topographic map; Visual inspection (certification) of the proposed site

☐ Yes ☐ No

Within the area overlying a subsurface mine.

- Written confirmation or verification or map from the NM EMNRD-Mining and Mineral Division

☐ Yes ☐ No

Within an unstable area.

- Engineering measures incorporated into the design; NM Bureau of Geology & Mineral Resources; USGS; NM Geological Society; Topographic map

☐ Yes ☐ No

Within a 100-year floodplain.

- FEMA map

☐ Yes ☐ No

18.

On-Site Closure Plan Checklist: (19.15.17.13 NMAC) *Instructions: Each of the following items must be attached to the closure plan. Please indicate, by a check mark in the box, that the documents are attached.*

☐ Siting Criteria Compliance Demonstrations - based upon the appropriate requirements of 19.15.17.10 NMAC

☐ Proof of Surface Owner Notice - based upon the appropriate requirements of Subsection F of 19.15.17.13 NMAC

☐ Construction/Design Plan of Burial Trench (if applicable) based upon the appropriate requirements of 19.15.17.11 NMAC

☐ Construction/Design Plan of Temporary Pit (for in-place burial of a drying pad) - based upon the appropriate requirements of 19.15.17.11 NMAC

☐ Protocols and Procedures - based upon the appropriate requirements of 19.15.17.13 NMAC

☐ Confirmation Sampling Plan (if applicable) - based upon the appropriate requirements of Subsection F of 19.15.17.13 NMAC

☐ Waste Material Sampling Plan - based upon the appropriate requirements of Subsection F of 19.15.17.13 NMAC

☐ Disposal Facility Name and Permit Number (for liquids, drilling fluids and drill cuttings or in case on-site closure standards cannot be achieved)

☐ Soil Cover Design - based upon the appropriate requirements of Subsection H of 19.15.17.13 NMAC

☐ Re-vegetation Plan - based upon the appropriate requirements of Subsection I of 19.15.17.13 NMAC

☐ Site Reclamation Plan - based upon the appropriate requirements of Subsection G of 19.15.17.13 NMAC

19.

Operator Application Certification:

I hereby certify that the information submitted with this application is true, accurate and complete to the best of my knowledge and belief.

Name (Print): Kurt FagrelusTitle: Vice President, ExplorationSignature: Kurt FagrelusDate: September, 25 2008e-mail address: kfagrelus@duganproduction.comTelephone: 505-325-1821 (O), 505-320-8248 (C)

20.

OCD Approval: ☒ Permit Application (including closure plan) ☐ Closure Plan (only) ☐ OCD Conditions (see attachment)

OCD Representative Signature: Donald D. KellyApproval Date: 3/20/2012Title: Compliance Officer

OCD Permit Number: _____

21.

Closure Report (required within 60 days of closure completion): Subsection K of 19.15.17.13 NMAC

Instructions: Operators are required to obtain an approved closure plan prior to implementing any closure activities and submitting the closure report. The closure report is required to be submitted to the division within 60 days of the completion of the closure activities. Please do not complete this section of the form until an approved closure plan has been obtained and the closure activities have been completed.

☐ Closure Completion Date: _____

22.

Closure Method:

☐ Waste Excavation and Removal ☐ On-Site Closure Method ☐ Alternative Closure Method ☐ Waste Removal (Closed-loop systems only)
☐ If different from approved plan, please explain.

23.

Closure Report Regarding Waste Removal Closure For Closed-loop Systems That Utilize Above Ground Steel Tanks or Haul-off Bins Only:

Instructions: Please indentify the facility or facilities for where the liquids, drilling fluids and drill cuttings were disposed. Use attachment if more than two facilities were utilized.

Disposal Facility Name: _____

Disposal Facility Permit Number: _____

Disposal Facility Name: _____

Disposal Facility Permit Number: _____

Were the closed-loop system operations and associated activities performed on or in areas that *will not* be used for future service and operations?

☐ Yes (If yes, please demonstrate compliance to the items below) ☐ No

Required for impacted areas which will not be used for future service and operations:

- ☐ Site Reclamation (Photo Documentation)
☐ Soil Backfilling and Cover Installation
☐ Re-vegetation Application Rates and Seeding Technique

24.

Closure Report Attachment Checklist: *Instructions: Each of the following items must be attached to the closure report. Please indicate, by a check mark in the box, that the documents are attached.*

- ☐ Proof of Closure Notice (surface owner and division)
☐ Proof of Deed Notice (required for on-site closure)
☐ Plot Plan (for on-site closures and temporary pits)
☐ Confirmation Sampling Analytical Results (if applicable)
☐ Waste Material Sampling Analytical Results (required for on-site closure)
☐ Disposal Facility Name and Permit Number
☐ Soil Backfilling and Cover Installation
☐ Re-vegetation Application Rates and Seeding Technique
☐ Site Reclamation (Photo Documentation)

On-site Closure Location: Latitude _____ Longitude _____ NAD: ☐ 1927 ☐ 1983

25.

Operator Closure Certification:

I hereby certify that the information and attachments submitted with this closure report is true, accurate and complete to the best of my knowledge and belief. I also certify that the closure complies with all applicable closure requirements and conditions specified in the approved closure plan.

Name (Print): Kurt FagrelusTitle: Vice President, Exploration

Signature: _____

Date: _____

e-mail address: kfagrelus@duganproduction.comTelephone: 505-325-1821 (O), 505-320-8248 (C)

Western Federal Com #90 Hydrogeologic Report

The Western Federal Com #90 is on Navajo Nation Trust Lands within the Navajo Indian Irrigation Project (NIIP), San Juan County, New Mexico. Water used for irrigation on NIIP is transported to the area from Cutter Dam and Navajo Dam over 25-30 miles to the north and east through an elaborate, cement lined canal system.

A records search of the NM Office of the State Engineer –iWATERS database was conducted on a three square mile area centered on the Western Federal Com #90 location (Exhibit 1). No water wells were located within the search area. The results of the search are shown on Exhibit 1 and 2.

The only known source of stock water in the region is encountered in Quarternary valley-fill deposits in existing arroyos at shallow depths of approximately 15 – 50 feet below the surface. The proposed below grade tank is not located in an arroyo, the closest arroyo is over 2,000 feet away.

The Nacimiento Formation extends from the surface down to a depth of approximately 400 feet and is comprised of dominantly mudstones with minor, laterally discontinuous fluvial and alluvial, fine grained sandstones. Near the base of the Nacimiento (350 - 400 feet below surface) thin, silty sandstones can occur. However, these sands are discontinuous, have high silt content and would not be expected to be a good source of water.

The underlying Ojo Alamo Sandstone ranges from approximately 400 feet down to about 490 feet and is comprised of a coarse grained alluvial sandstone inter-bedded with lenses of mudstone and occasional conglomeratic sandstone. The Ojo Alamo may yield marginal quantities of water for livestock, however, the water quality is typically greater than 1,000 ppm total dissolved solids and high in sulfate.

Both the Nacimiento and Ojo Alamo are potential sources of water in the area, however, excessive drilling depths, unpredictable variations in reservoir quality and water quality have discouraged the drilling of water wells in the in the subject area.

Based on electric open hole logs, the iWATERS database and literature reviewed, poor quality ground water might be found at a depth below 350 feet from thin discontinuous Nacimiento sands or below 400 feet from the Ojo Alamo Sandstone.

Stone, W.J., Lyford, F.P., Frenzel, P.F., Mizell, N.H., and Padgett, E.T., 1983, Hydrogeology and water resources of San Juan Basin, New Mexico: New Mexico Bureau of Mines and Mineral Resources Hydrologic Report 6, 70 p.

Brown, D.R., and Stone, W.J., 1979, Hydrogeology of Aztec quadrangle, San Juan County, New Mexico: New Mexico Bureau of Mines and Mineral Resources Hydrogeologic Sheet 1.

Levings, G.W., Craig, S.D., Dam, W.L. Kernodle, J.M., and Thorn, C.R., 1990, Hydrogeology of the San Jose, Nacimiento, and Animas Formations in the San Juan Structural Basin, New Mexico, Colorado, Arizona and Utah: U.S. Geological Survey, Atlas HA-720-A, Sheet 1 and 2.

Thorn, C.R., Levings, G.W., Craig, S.D., Dam, W.L., and Kernodle, J.M., 1990, Hydrogeology of the Ojo Alamo Sandstone in the San Juan Structural Basin, New Mexico, Colorado, Arizona and Utah: U.S. Geological Survey, Atlas HA-720-B, Sheet 1 and 2.

**New Mexico Office of the State Engineer
POD Reports and Downloads**

EXHIBIT 1.

Township: 26N Range: 12W Sections: 1,12,13

NAD27 X: Y: Zone: ☐ Search Radius:

County: ☐ Basin: ☐ Number: Suffix:

Owner Name: (First) _____ (Last) _____ Non-Domestic Domestic All

POD / Surface Data Report

Avg Depth to Water Report

Water Column Report

Clear Form

iWATERS Menu

Help

WATER COLUMN REPORT 06/23/2008

(quarters are 1=NW 2=NE 3=SW 4=SE)
(quarters are biggest to smallest)

Number	Tws	Rng	Sec	q	q	q	Zone	X	Y	Depth	Depth	Water (in feet)
										Well	Water	Column
Records found, try again												

**New Mexico Office of the State Engineer
POD Reports and Downloads**

Township: 26N Range: 11W Sections: 5,6,7,8,18,17

NAD27 X: Y: Zone: ☐ Search Radius:

County: ☐ Basin: ☐ Number: Suffix:

Owner Name: (First) (Last) Non-Domestic Domestic All

POD / Surface Data Report

Avg Depth to Water Report

Water Column Report

Clear Form

iWATERS Menu

Help

WATER COLUMN REPORT 06/23/2008

(quarters are 1=NW 2=NE 3=SW 4=SE)
(quarters are biggest to smallest)

Number	(quarters are biggest to smallest)				Zone	X	Y	Depth	Depth	Water (in feet)
	Tws	Rng	Sec	q q q				Well	Water	Column

Records found, try again

Siting Criteria for the Western Federal Com 90

1. Ground water is not less than 50-feet below the bottom of the below grade tank. Ground water is greater than 100-feet below the bottom of the below grade tank.
2. The below grade tank is not within 300-feet of a continuously flowing water course, or 200 feet of any other watercourse, lakebed, sinkhole, or playa lake (measured from ordinary high water mark). See the attached Topographic map (Exhibit³~~2~~) and Visual Inspection Certification of the location and area around the subject below grade tank.
3. The below grade tank is not within 300-feet from a permanent residence, school, hospital, institution, or church in existence at the time of initial application. See the attached Satellite Image (Exhibit³~~2~~) and Visual Inspection certification of the location and area around the subject below grade tank.
4. The below grade tank is not within 500-feet of a private, domestic fresh water well or spring that less than five households use for domestic or stock watering purposes, or within 1000 horizontal feet of any other fresh water well or spring, in existence at the time of initial application. See the attached NM Office of the State Engineer iWATERS database search (Exhibit⁴~~3~~) and Visual Inspection certification of the location and area around the subject below grade tank.
5. The below grade tank is not located within the incorporated municipal boundaries or within a defined municipal fresh water well field covered under a municipal ordinance adopted pursuant to NMSA 1978 Section 3-27-3, as amended. See the attached Topographic map of the location and area around the subject below grade tank.
6. The below grade tank is not located within 500-feet of a wetland. See the attached Topographic map and Visual Inspection Certification of the location and area around the subject below grade tank.
7. The below grade tank is not located within the area overlying a subsurface mine. See the attached Mine, Mills and Quarry Map of New Mexico (New Mexico, EMND 2008) (Exhibit⁶~~5~~) showing the location and area around the subject pit.
8. The below grade tank is not located within an unstable area. See the attached Topographic map of the location and area around the subject below grade tank.
9. The below grade tank is not located within a 100-year floodplain area. See the attached FEMA map (Exhibit⁷~~6~~) of the 100 year floodplain showing the location and area around the subject pit.

Western Federal Com 90 Visual Inspection Certification

I, Kurt Fagrelus, Vice President of Exploration for Dugan Production Corp. 709 East Murray Drive, Farmington, New Mexico hereby certify that I or persons under my direct supervision prepared the attached exhibits and conducted a Visual Inspection of the location and area around the proposed Western Federal Com 90 below grade tank. This application is in full compliance with all siting criteria and standards for below grade tanks established by the State of New Mexico, Energy Minerals and Natural Resources Department 19.15.17.10 NMAC.

Kurt Fagrelus
Kurt Fagrelus

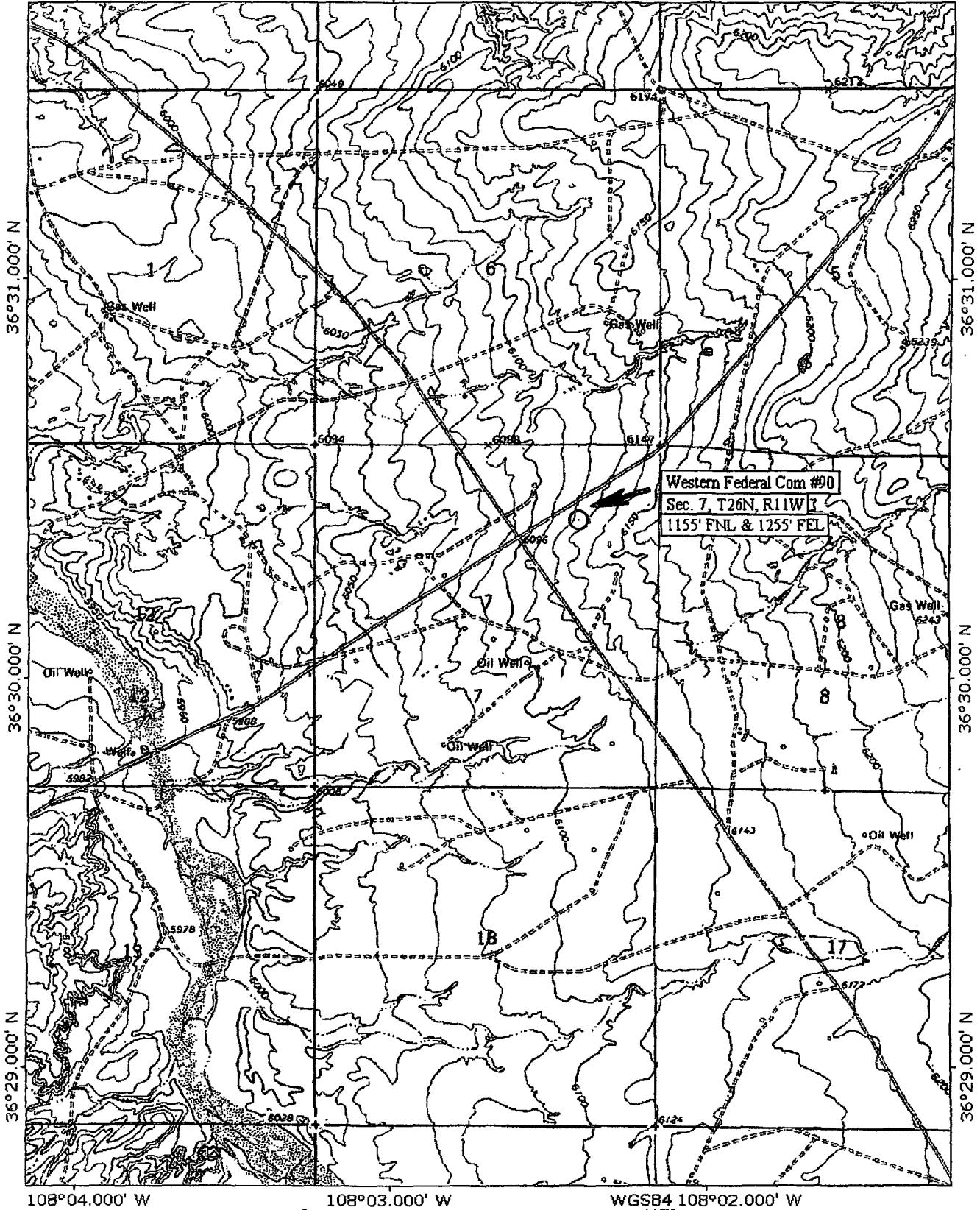
Sept. 25, 2008
Date

TOPOI map printed on 06/26/08 from "New Mexico.tpo" and "Untitled.tpg"

108°04.000' W

108°03.000' W

WGS84 108°02.000' W

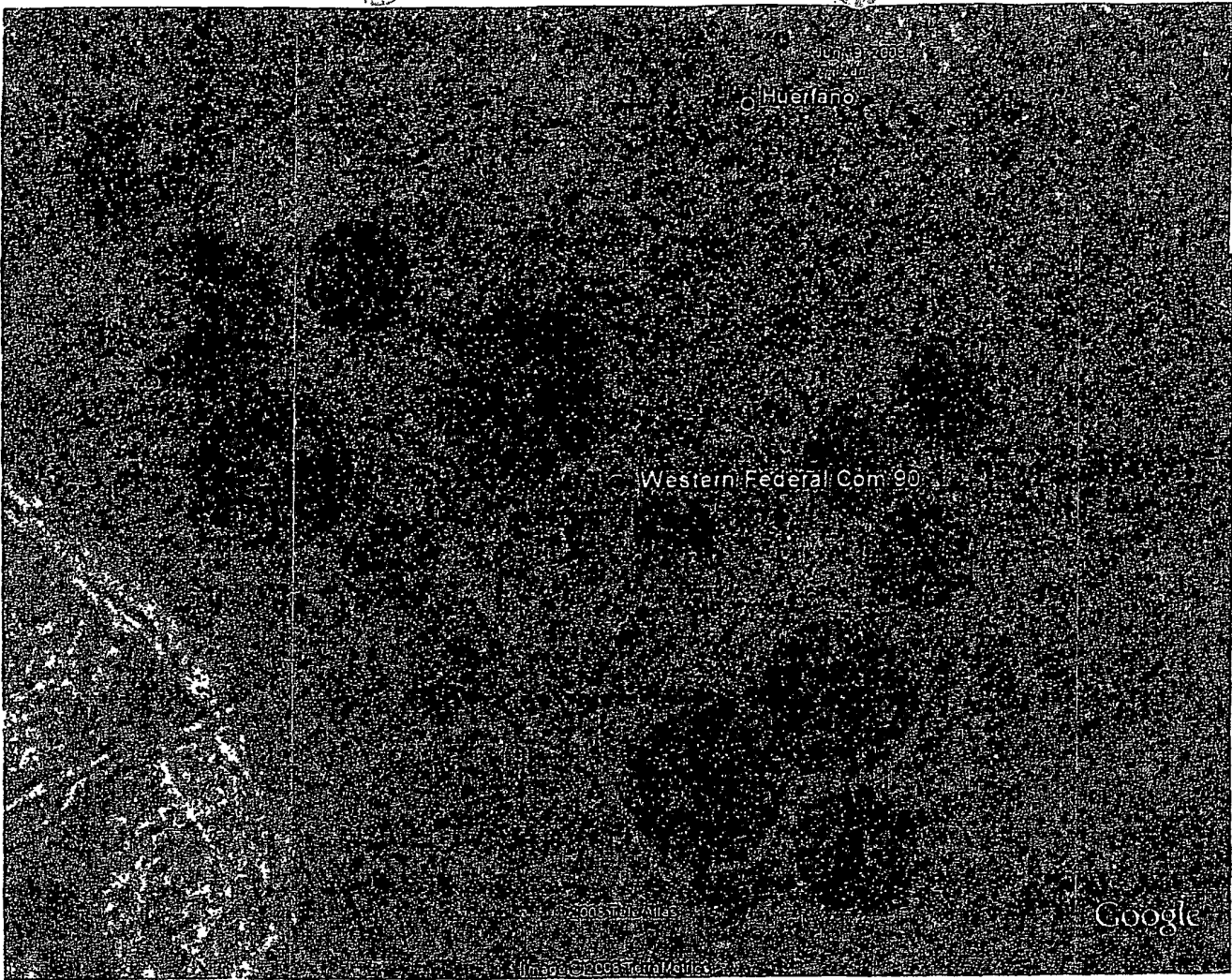


TN
11°

0 1000 FEET 0 500 1000 METERS

Printed from TOPOI ©2001 National Geographic Holdings (www.topo.com)

EXHIBIT 4.



**New Mexico Office of the State Engineer
POD Reports and Downloads**

EXHIBIT 5.

Township: 26N Range: 11W Sections: 7

NAD27 X: Y: Zone: ☐ Search Radius:

County: ☐ Basin: ☐ Number: Suffix:

Owner Name: (First) _____ (Last) _____ Non-Domestic Domestic
All

POD / Surface Data Report

Avg Depth to Water Report

Water Column Report

Clear Form

iWATERS Menu

Help

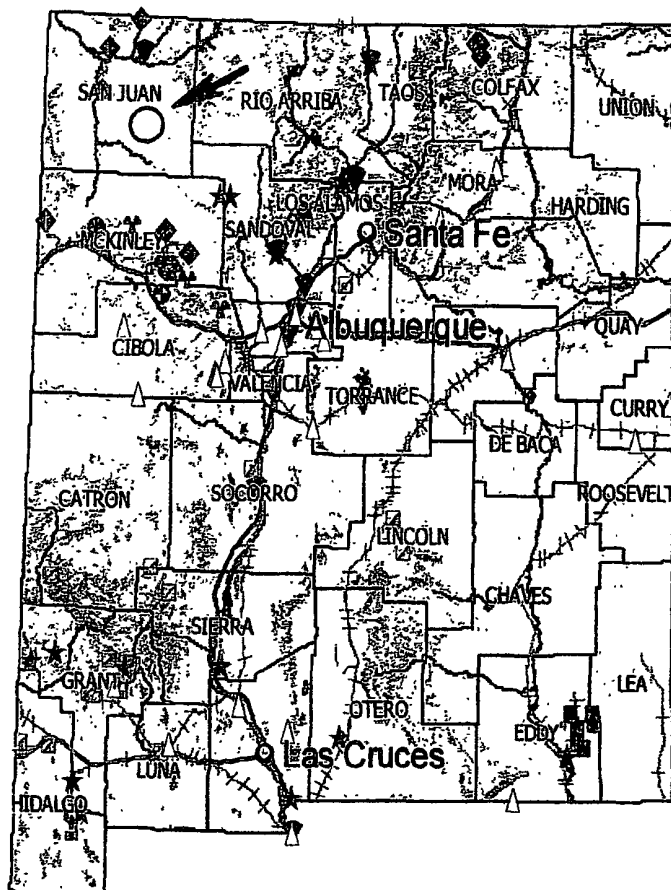
POD / SURFACE DATA REPORT 06/19/2008

DB File Nbr {acre ft per annum}
Use Diversion Owner

POD Number

(qua
(qua

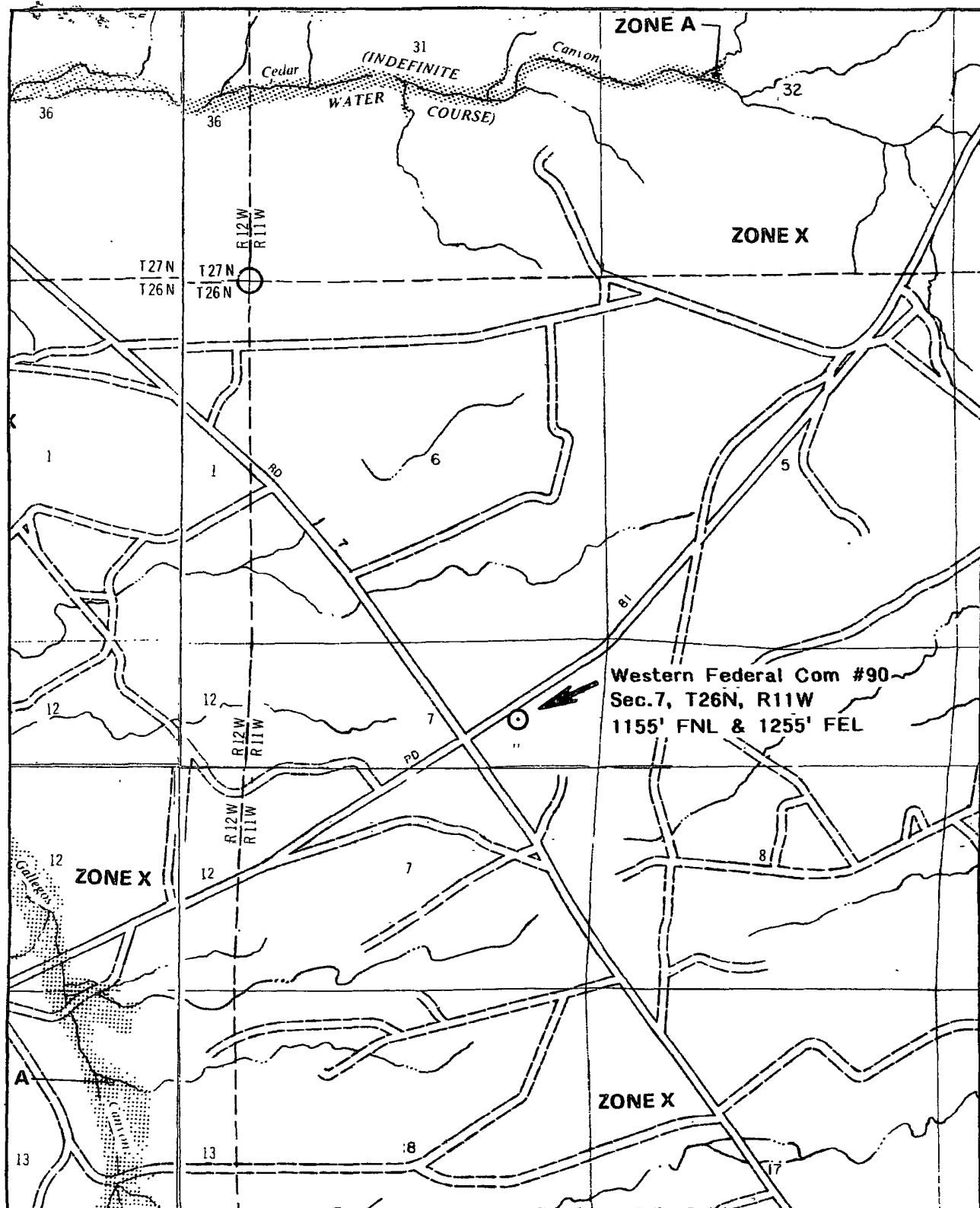
No Records found, try again



Mine, Mills and Quarry Map of New Mexico

Dugan Production Corp.
WESTERN FEDERAL COM #90

Taken from the New Mexico Energy, Minerals and Natural Resources Department.
Mining and Minerals Division.



FEMA 100-Year Floodplain Map

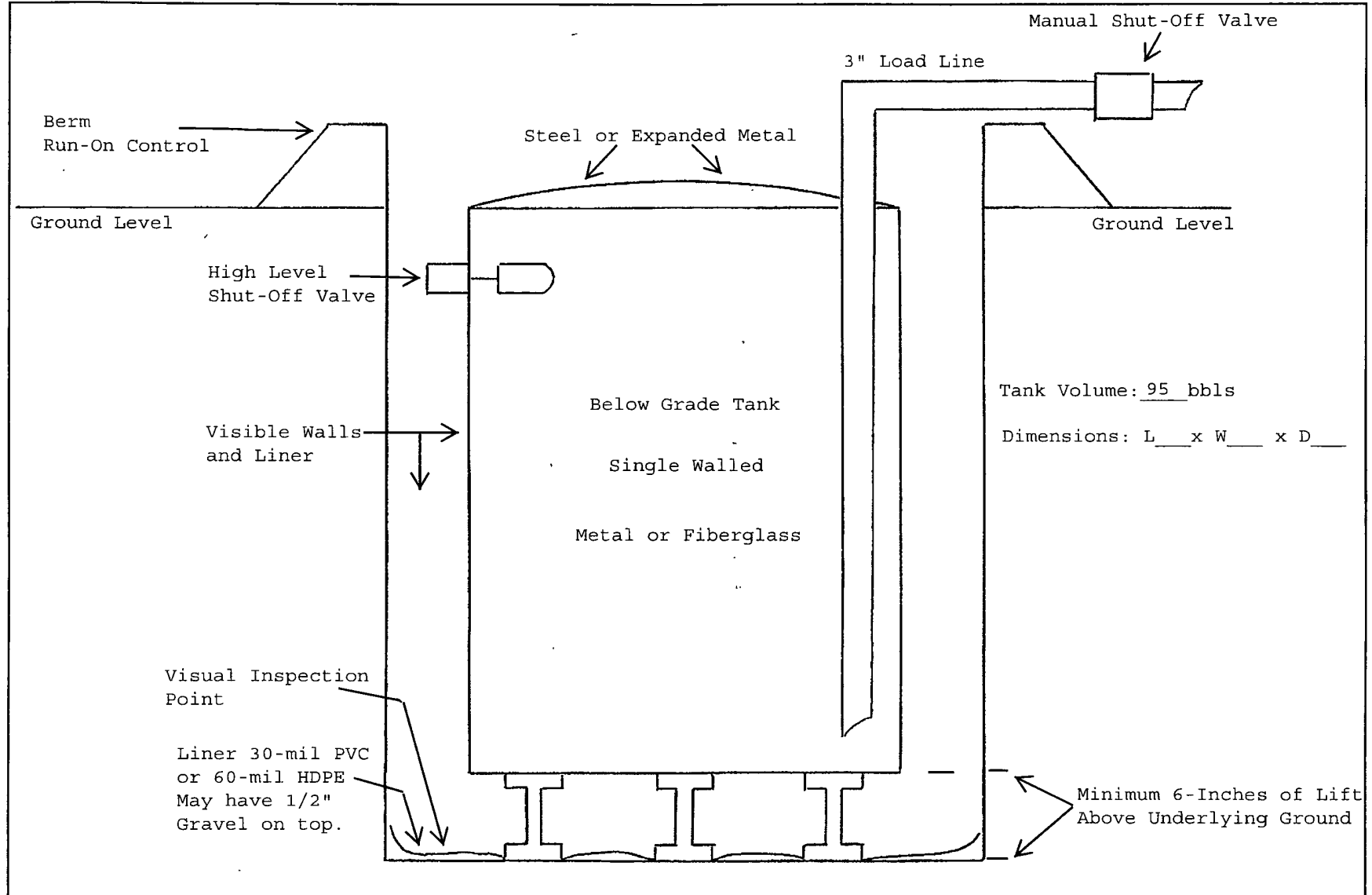
Dugan Production Corp.
Western Federal Com #90

Western Federal Com 90 Design and Construction Plan

The Western Federal Com 90 below grade tank will be designed and constructed in accordance with the following requirements:

1. Below grade tank will be designed and constructed to contain liquids and solids, prevent contamination of fresh water and protect the public health and environment (Exhibit 7).
2. Stockpile topsoil prior to digging pit, keep separate from subsoil and use as final cover and fill when closing pit.
3. Sign-12" by 24" with operator name, lease name, well #, location (unit letter, qtr/qtr, Sect., Twp., and Rge.) and emergency phone #'s will be posted on location. Sign will be posted in a location where it can be easily read.
4. Fencing around the Western Federal Com 90 below grade tank will be constructed and operated in a manner that prevents unauthorized access and shall be maintained in good condition to protect the public and wildlife. Fencing will include a 4-foot hog wire fencing with two strands of barbed wire or top rail of re-bar or pipe on top. See the attached request for Administrative Approval. The Western Federal Com 90 below grade tank is not located within 1000 feet of a house, school, hospital or church.
5. The Western Federal Com 90 below grade tank will be covered with expanded metal, chicken-wire or a metal lid on top of the tank.
6. Western Federal Com 90 below grade tank will be designed and constructed to ensure the confinement of liquids and prevent unauthorized releases. Pit will be constructed with a firm foundation and interior slopes, smooth and free of rocks or sharp edges to prevent punctures, cracks or indentations of the liner or tank bottom.
7. Western Federal Com 90 below grade tank will be constructed of materials resistant to the tank's particular contents and resistant to damage from sunlight.
8. Liner will be 30-mil flexible PVC or 60-mil HDPE, string reinforced, impervious material, resistant to UV light, hydrocarbons, salt, acidic or basic liquids. The liner will have a hydraulic conductivity less than 1×10^{-9} cm/sec. Liner compatibility will comply with EPA SW-846.
9. The Western Federal Com 90 below grade tank will be constructed with single walled sides and bottom which will be open for visual inspection for leaks. The below grade tank will be elevated a minimum of 6-inches above the underlying ground surface. The below grade tank will be underlain with a geo-membrane liner designed to divert any leaked fluid to a visual inspection point. Liner may be covered with gravel.
10. The Western Federal Com 90 below grade tank will be equipped with a properly operating automatic high-level shut-off control device and manual controls to prevent overflows.
11. Diversionary berms, ditches or sloping will be constructed as necessary to prevent overflow and the collection of surface water entrapment.

EXHIBIT 7. Design Plan For Below Grade Tank



Dugan Production Corp.
Western Federal Com #90

Western Federal Com 90 Operational Requirements

The Western Federal Com 90 below grade tank will be maintained and operated in accordance with the following requirements:

1. The Western Federal Com 90 below grade tank will be operated and maintained to contain liquids and solids and maintain the integrity of the tank / liner system or secondary containment system to prevent contamination of fresh water and protect public health and environment.
2. All fluids will be recycled, reused, reclaimed or disposed of in a manner approved by NMOCD rules.
3. Do not dispose of solid waste, trash, debris or hazardous material into the pit.
4. If the Western Federal Com 90 below grade tank develops a leak or if a penetration occurs below the liquids surface, all liquid will be removed above the damage or leak line within 48-hours. The NMOCD office will be notified within 48-hours of the discovery. The below grade tank / liner system or secondary containment system will then be either replaced or repaired.
5. Below grade tank will be constructed and operated in a manner that prevents the tank from over flow and prevents surface water from entering the pit. Diversion berms will be constructed around the sides of pit and an automatic high level shut-off will be installed.
6. Any measurable oil will be continuously removed from the Western Federal Com 90 below grade tank to prevent a significant accumulation of oil overtime.
7. The Western Federal Com 90 below grade tank will be inspected at least monthly and records of each inspection will be maintained for five years.
8. Adequate freeboard will be maintained to prevent overtopping of the Western Federal Com 90 below grade tank.

Western Federal Com 90 Closure Plan–Methods, Procedures and Protocols

1. Comply with deadlines for closure of a pit or below grade tank established by the State of New Mexico, Energy Minerals and Natural Resources Department 19.15.17.13 NMAC, or an earlier date if required by the NMOCD in the case of imminent danger to fresh water, public health or the environment.

Existing On June 16, 2008	Permit Applc. Submittal or Modification Request	File Closure Plan By	Stop Use By	Close By
Temporary Pit - Unlined	Not Permt'd under 19.15.17	7/16/2008	Upon drlg rig release	9/16/2008
Permanent Pit - Unlined or Lined	Not permitted with NMOCD	7/16/2008	6-16-2008	12/16/2008
Permanent Pit - Unlined	Permitted or with NMOCD	12-16-2008	6-16-2010	6-16-2011
BGT-Aprvd. Design	Not Permt'd under 19.15.17 Applc. by 9-16-2008	12/16/2008	failed integrity replc w/apprvd design	
BGT-Not Aprvd Design Nor Retrofit to Comply w/19.15.17	Not Permt'd under 19.15.17 Mod. Rqst by 9-16-2008	12/16/2008	6/16/2013	6-16-2013
BGT-Not Aprvd Design Nor Retrofit to comply w/19.15.17	NA	12/16/2008	6/16/2013	6/16/2013
Permanent Pit-Design and Constr Does not comply w/19.15.17 permitted and lined	Mod. Rqst by 12-16-2008 Comply w/in 18-mos of aprvl	12/16/2008 submit w/mod request	failed integrity replc w/apprvd design	60-days after cessation
Permanent Pit-Design and Constr Does not comply w/19 15.17 Registered and Lined	Permit Applc by 12-16-2008 Comply w/in 18-mos of aprvl	12/16/2008 submit w/permit Applc		60-days after cessation
Permanent Pit	Permitted under 19.15.17	60-Days prior to close		
Temporary Pit	Permitted under 19.15.17	Prior to closure	Upon drlg rig release	6-mos after rig release
BGT	Permitted under 19 15.17	12/16/2013 or prior to closure	failed integrity replc w/apprvd design	60-days after cessation

2. The Western Federal Com 90 below grade tank has not been constructed yet. This report serves as both the permit and closure plan for the below grade tank. Upon approval of this application, a below grade tank that meets the design requirements of rule 19.15.17 will be constructed.
3. Provide the NMOCD district office at least 72-hours notice but no greater than 1 week prior to any closure operations. Notice will include operator name, well name and number, API number, and location (unit letter, section, township and range).

4. Below grade tank will be closed within 60-days after cessation of use.
5. Proof of closure notice will be provided by certified mail to surface owner after closure. Proof of notice will be attached to final closure report.
6. Remove all liquid from below grade tank prior to closure and dispose of at the Dugan Production operated Sanchez O'Brien #1 SWD (permit SWD-694) located 1650 feet from the South line and 990 feet from the West line (Unit L) of Section 6, Township 24 North, Range 9 West.
7. All solids from the below grade tank and all solids removed from the containment pit will be excavated, hauled to and disposed of at either the Envirotech facility (permit #NM-01-0011) facility located in Section 6, Township 26 North, Range 10 West or the IEI facility (permit NM-01-0010B) located in Section 2, Township 29 North, Range 12 West.
8. Remove below grade tank and dispose of in a NMOCD approved facility, or recycle, reuse, or reclaim it in a manner that the NMOCD approves.
9. On site equipment associated with the below grade tank will be removed unless it is needed for some other purpose.
10. Collect a five point, composite sample of the soils beneath the below grade tank (any area that is wet, discolored or shows evidence of a release) to demonstrate that Benzene, BTEX, TPH and chlorides do not exceed the standards as specified in 19.15.17.13.E or the background concentration, whichever is greater.

Components	Test Method	Limit (mg/kg)
Benzene	EPA SW-846 8021B or 8260B	0.2
BTEX	EPA SW-846 8021B or 8260B	50
TPH	EPA SW-846 418.1	100
GRO/DRO	EPA SW-846 8015M	NS
Chlorides	EPA 300.1	250 or Background

11. The NMOCD will be notified of the testing results on form C-141.
12. If it is determined that a release has occurred, rule 19.15.3.116 NMAC and 19.15.1.19 NMAC will be complied with as required.
13. If the sampling results demonstrate that a release has not occurred, or that any release does not exceed the concentrations specified above or background concentrations, the pit will be backfilled with compacted, non-waste containing, earthen material.
14. Stockpiled sub-surface soil will be used to backfill pit and re-contour (to a final or intermediate cover that blends with the surrounding topography). A minimum of four feet of compacted, non-waste containing, earthen material will be used as backfill.
15. Stockpiled surface soil will be used as a cover over the backfilled pit and disturbed area no longer needed for production operations. The soil cover will include either the background thickness of top soil or one foot of suitable material to establish vegetation at the site whichever is greater.

16. The area will be re-seeded as per BLM guidelines. Re-seeding will be repeated until 70% of the native natural cover is achieved and maintained for two successive growing seasons. The first growing season after the pit is closed the disturbed area will be re-seeded. The seeding method will be to drill on contour whenever possible.
17. The NMOCD will be notified within 60-days of closure of the below grade tank. The closure report will be filed on form C-144 and will document all closure activities, sampling results, a plot plan, and details on backfilling and capping where applicable.
18. The NMOCD will be notified once successful re-vegetation has been achieved.

Western Federal Com 90 Request for Administrative Approval

Administrative approval is hereby requested for an alternative to the fencing design for the Western Federal Com 90 below grade tank.

The request for administrative approval cited above is needed to help minimize environmental impact and increase safety and protect wildlife and public health. The alternative proposed will protect fresh water, public health, safety and the environment more effectively than the design and construction specifications established by the State of New Mexico, Energy Minerals and Natural Resources Department do in rule 19.15.17.11 NMAC.

1. The proposed alternative fencing design will include T-posts spaced 10-feet apart. Hog wire / field fence 4-feet in height will be strung tightly and anchored to the top and bottom of each T-post. Small holes (3" high X 6" wide) in the hog-wire will be located at ground level with increasing larger holes (up to 7" high X 6" wide) located at the top of the fence. Anchor braces will be put at all four corners to strengthen and tighten the fence. Two strands of barbed wire or a pipe / re-bar top rail will be constructed above the hog wire. This fence design (developed over the last 30-years) has proven to be very effective controlling unauthorized access to below grade tanks.

The existing rule (19.15.17.11.D.3) would require the operator to fence the below grade tank with a four foot fence that has at least four strands of barbed wire evenly spaced in the interval between on foot and four feet above the ground level. The proposed fencing alternative would provide better security against unauthorized access to below grade tanks. The smaller holes in hog-wire (3" X 6" up to 7" X 6") is more effective at controlling unauthorized access by the public and wildlife than 4-strands of barbed wire spaced 12" apart.

The proposed fence around the below grade tank will be constructed and operated in a manner that prevents unauthorized access and shall maintain the fence in good condition to protect the public and wildlife.

The request for administrative approval cited above is needed to help minimize environmental impact, increase safety and protect wildlife and public health. The alternatives proposed will protect fresh water, public health, safety and the environment more effectively than the design and construction specifications established by the State of New Mexico, Energy Minerals and Natural Resources Department do in rule 19.15.17.11 NMAC.