

UNITED STATES  
DEPARTMENT OF THE INTERIOR  
BUREAU OF LAND MANAGEMENTFORM APPROVED  
OMB NO 1004-0135  
Expires: July 31, 2010**SUNDRY NOTICES AND REPORTS ON WELLS**  
*Do not use this form for proposals to drill or to re-enter an abandoned well. Use form 3160-3 (APD) for such proposals.*5. Lease Serial No.  
NMNM013686

6. If Indian, Allottee or Tribe Name

7. If Unit or CA/Agreement, Name and/or No.

**SUBMIT IN TRIPLICATE - Other instructions on reverse side.**

## 1. Type of Well

☐ Oil Well ☒ Gas Well ☐ Other8. Well Name and No.  
PRITCHARD 6E

## 2. Name of Operator

BP AMERICA PRODUCTION CO.

Contact: CHERRY HLAVA

E-Mail: hlavaci@bp.com

## 9. API Well No.

30-045-26149-00-S1

## 3a. Address

200 ENERGY COURT  
FARMINGTON, NM 87401

## 3b. Phone No (include area code)

Ph: 281.366.4081

## 10. Field and Pool, or Exploratory

BASIN DAKOTA  
BLANCO PICTURED CLIFFS

## 4. Location of Well (Footage, Sec., T., R., M., or Survey Description)

Sec 34 T31N R9W NWNW 1065FNL 0900FWL  
36.858990 N Lat, 107.773390 W Lon

## 11. County or Parish, and State

SAN JUAN COUNTY, NM

## 12. CHECK APPROPRIATE BOX(ES) TO INDICATE NATURE OF NOTICE, REPORT, OR OTHER DATA

TYPE OF SUBMISSION	TYPE OF ACTION			
<input checked="" type="checkbox"/> Notice of Intent	<input type="checkbox"/> Acidize	<input type="checkbox"/> Deepen	<input type="checkbox"/> Production (Start/Resume)	<input type="checkbox"/> Water Shut-Off
<input type="checkbox"/> Subsequent Report	<input type="checkbox"/> Alter Casing	<input type="checkbox"/> Fracture Treat	<input type="checkbox"/> Reclamation	<input type="checkbox"/> Well Integrity
<input type="checkbox"/> Final Abandonment Notice	<input type="checkbox"/> Casing Repair	<input type="checkbox"/> New Construction	<input type="checkbox"/> Recomplete	<input type="checkbox"/> Other
<b>BP</b>	<input type="checkbox"/> Change Plans	<input checked="" type="checkbox"/> Plug and Abandon	<input type="checkbox"/> Temporarily Abandon	
	<input type="checkbox"/> Convert to Injection	<input type="checkbox"/> Plug Back	<input type="checkbox"/> Water Disposal	

13. Describe Proposed or Completed Operation (clearly state all pertinent details, including estimated starting date of any proposed work and approximate duration thereof. If the proposal is to deepen directionally or recompleat horizontally, give subsurface locations and measured and true vertical depths of all pertinent markers and zones. Attach the Bond under which the work will be performed or provide the Bond No. on file with BLM/BIA. Required subsequent reports shall be filed within 30 days following completion of the involved operations. If the operation results in a multiple completion or recompleat in a new interval, a Form 3160-4 shall be filed once testing has been completed. Final Abandonment Notices shall be filed only after all requirements, including reclamation, have been completed, and the operator has determined that the site is ready for final inspection.)

Please reference sundry filed 3/27/12 to run MIT.

BP's intentional plan is to MIT the casing of said well and convert the well into a pressure observation well.

In the event the casing fails the MIT, BP requests permission to plug &amp; abandon the entire well bore. Please see the attached plugging procedure.

RCVD APR 5 '12  
OIL CONS. DIV.

DIST. 3

## 14. I hereby certify that the foregoing is true and correct.

Electronic Submission #134492 verified by the BLM Well Information System  
For BP AMERICA PRODUCTION CO., sent to the Farmington  
Committed to AFMSS for processing by STEVE MASON on 04/03/2012 (12SXM0168SE)

Name (Printed/Typed) CHERRY HLAVA

Title REGULATORY ANALYST

Signature (Electronic Submission)

Date 04/02/2012

## THIS SPACE FOR FEDERAL OR STATE OFFICE USE

Approved By STEPHEN MASON

Title PETROLEUM ENGINEER

Date 04/03/2012

Conditions of approval, if any, are attached. Approval of this notice does not warrant or certify that the applicant holds legal or equitable title to those rights in the subject lease which would entitle the applicant to conduct operations thereon.

Office Farmington

Title 18 U.S.C. Section 1001 and Title 43 U.S.C. Section 1212, make it a crime for any person knowingly and willfully to make to any department or agency of the United States any false, fictitious or fraudulent statements or representations as to any matter within its jurisdiction

\*\* BLM REVISED \*\* BLM REVISED \*\* BLM REVISED \*\* BLM REVISED \*\* BLM REVISED \*\*

NMOC



## BP - San Juan Wellwork Procedure

### Pritchard 6E 30-045-26149

D SEC. 34, T31NN, R09WW  
1065' FNL, 900 FWL  
San Juan, NM  
Dakota/Picture Cliffs Formation  
Lease number: NM 013686  
TA status - Pressure tested well to maintain 9/2007

The Purpose of this procedure is to outline the permanent abandonment on the Pritchard 6E in the event the casing fails an MIT.

The following steps will take place after the CICR has been removed

#### Basic Job Procedure:

1. With the rig already on location and the casing has failed the MIT
2. Set CIBP above Dakota perforations at 7245'
3. Run CBL from Dakota to PC perforations
4. Abandon Dakota/Gallup formation by placing cement on top of CIBP (7245') to 6350'. Shoot holes and place cement outside pipe as needed.  
Bottom Plug: 7250' - 6350 → 900' + 50' excess → 15.1 bbls
5. Isolate the Mesa Verde Formation by placing cement from 4800 - 4500. Shoot holes and place cement outside pipe as needed.  
2nd Plug: 4800 - 4500 → 300' + 50' excess → 5.6 bbls
6. Set a CIBP above PC perforations at 2890'
7. Run CBL from PC perforations to surface
8. Isolate Picture Cliffs by setting a CIBP above perforations and placing cement on top. Shoot holes and place cement outside pipe as needed.  
3rd Plug: 2900 - 2500 → 400' + 50' excess → 17.7 bbls
9. Isolate surface casing shoe by shooting holes above ToC and circulating cement to surface.
10. Continue pumping cement until returns are good cement (14.6 ppg cement) are seen at surface
11. Cut tree off just below Braden Head. Top off all annuli with cement
12. Install well marker and identification plate per regulatory requirements.

BP American Production Co.  
Pritchard 6E  
API 30-045-26149  
Unit letter D SEC. 34, T31N, R09W  
1065' FNL, 900 FWL  
San Juan, NM  
Dakota/Picture Cliffs Formation  
Lease number: NM 013686  
P&A date - TBD

plug 376' - 265' to cover 9 5/8" shoe.

13. RD and release all equipment.

#### Policy Reminder

Any changes to the written procedure requires an approved MoC.

# Current Wellbore Diagram

bp



## Pritchard 6E

PC

300452614900

Unit D - Sec 34 - T31N - R09W  
San Juan

## Well History

Spud 1/8/85

**12/1992** - Decision made to recomple in the PC. Set a 7" retainer at 3200' to isolate the Dakota. Perforated PC from 2913-2943 & 2958-2972' (4 spf .31" dia) and frac'd with 25000 gal and 20K 20/40 sand

**1/1993** - Flow tested well. Decision made to dually complete well at a later date. The Dakota was left in TA status

**1998** - Install rod pump

**1/2006** - rod pump change. Changed out production tubing to new 2-3/8" EUE. Tagged fill at 3150' (PBTD at 3200'). Cleaned well out to PBTD

**9/2007** - Pressure tested well to maintain TA status of Dakota. Set RBP at 2850 and tested casing above. Test good. Ran production. Landed at 2900'

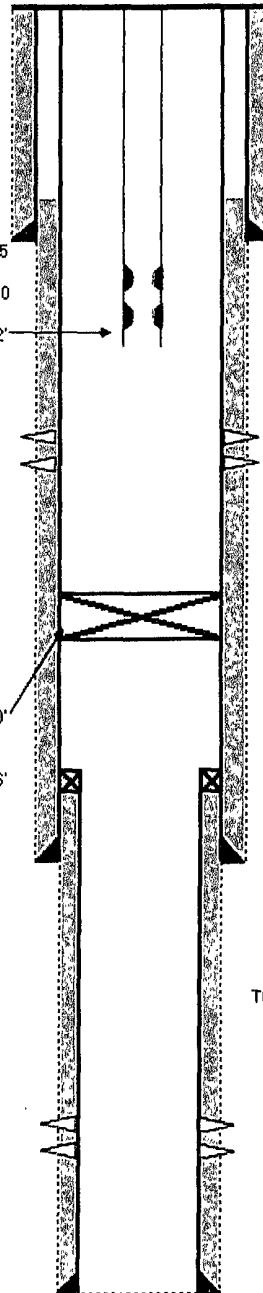
"X" @ 2866' 2.375" ID 1.875

"F" @ 2871' 2.375" ID 1.780

EOT @ 2892'

7" Halliburton Cement Retainer @ 3200'

TOL @ 3336'



PBTD: 7511  
Total Depth: 7520

## Surface Casing Data

12.25" Hole  
9-5/8", 36# ST&C @ 326'  
cmt w/ 225 sxs.  
circulated 10 bbl to surface

TOC @ 300' per TS

## Perforation Data

PC 2913-2972  
Frac w/ 10038 gal frac fluid, 400# 20/40 sand  
w/ 25032 gal frac fluid in 5 stages

## Tubing Details

## Length

2-3/8" 4.7# J-55	2854.77
1.875" ID Nipple	1
Pup Joint	4
1.78" ID Nipple	1
Muleshoe Sub	20

## Production Casing Data

8.75" Hole  
7", 23#, K-55 @ 3495'  
1 stage 182 sxs, 2nd stage 263 sxs

TOC @ 2750'

## Perforation Data

Dakota 7288 - 7494  
Frac w/ 102K gal 30# XL-gel and 154K# 20/40 sand

## Production Liner Data

6.25" Hole  
4-1/2", 11.6# K-55 bottom 13jts,  
88 jts 10.5# K-55 landed at 7517'  
444 sxs cmt. Circulated 10 bbls to surface.

## Formation Tops

Ojo Alamo	1600
Kirtland	1710
Fruitland	2600
Pictured Cliff:	2912
Lewis	3060
Cliff House	4680
Menefee	4900
Point Lookout	5125
Mancos	5475
Gallup	6450
Graneros	7230
Dakota	7280

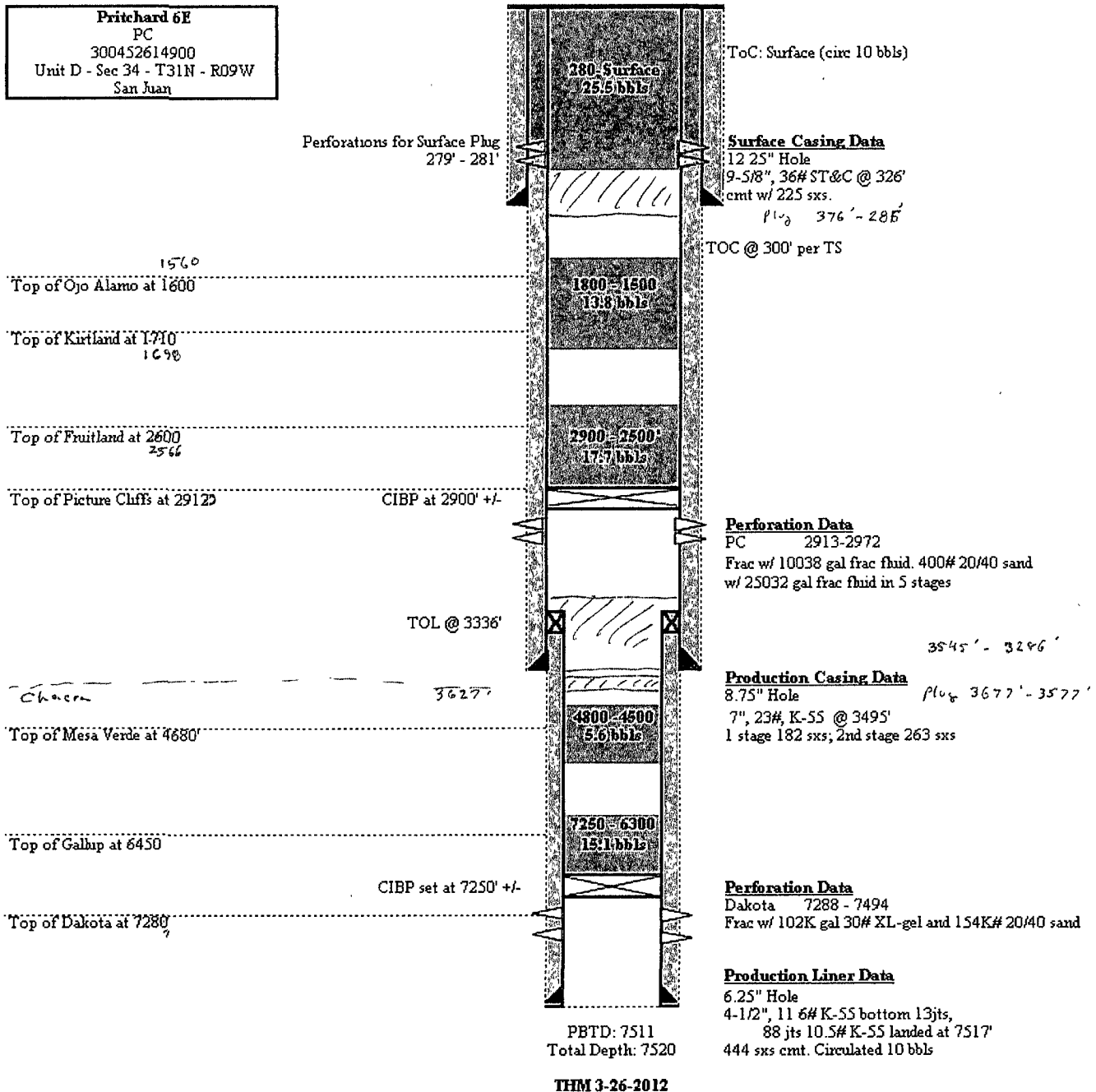
BP Confidential

# **Proposed Wellbore Diagram (P&A)**



**Pritchard 6E**  
PC  
300452614900  
Unit D - Sec 34 - T31N - R09W  
San Juan

KB: 6121  
GL: 6109



BP Confidential

**UNITED STATES DEPARTMENT OF THE INTERIOR  
BUREAU OF LAND MANAGEMENT  
FARMINGTON DISTRICT OFFICE  
6251 COLLEGE BLVD.  
FARMINGTON, NEW MEXICO 87402**

Attachment to notice of  
Intention to Abandon:

Re: Permanent Abandonment  
Well: 6E Pritchard

**CONDITIONS OF APPROVAL**

1. Plugging operations authorized are subject to the attached "General Requirements for Permanent Abandonment of Wells on Federal and Indian Lease."

2. Farmington Office is to be notified at least 24 hours before the plugging operations commence (505) 564-7750.

3. The following modifications to your plugging program are to be made:

- a) Spot a cement plug from 3677' – 3577' to cover the Chacra top.
- b) Spot a cement plug from 3545' – 3286' to cover the 7" casing shoe and the 4 ½" liner top.
- c) Place a cement plug from 376' – 285' to cover the 9 5/8" shoe.

You are also required to place cement excesses per 4.2 and 4.4 of the attached General Requirements.

Office Hours: 7:45 a.m. to 4:30 p.m.