

Submit 3 Copies To Appropriate District  
Office  
District I  
1625 N. French Dr., Hobbs, NM 88240  
District II  
1301 W. Grand Ave., Artesia, NM 88210  
District III  
1000 Rio Brazos Rd., Aztec, NM 87410  
District IV  
1220 S. St. Francis Dr., Santa Fe, NM  
87505

State of New Mexico  
Energy, Minerals and Natural Resources

Form C-103  
Jun 19, 2008

OIL CONSERVATION DIVISION  
1220 South St. Francis Dr.  
Santa Fe, NM 87505

WELL API NO. <b>30-039-27514</b>
5. Indicate Type of Lease STATE <input checked="" type="checkbox"/> FEE <input type="checkbox"/>
6. State Oil & Gas Lease No. <b>E-347-36</b>
7. Lease Name or Unit Agreement Name <b>San Juan 30-5 Unit</b>
8. Well Number <b>231A</b>
9. OGRID Number <b>217817</b>
10. Pool name or Wildcat <b>Basin Fruitland Coal</b>

SUNDRY NOTICES AND REPORTS ON WELLS (DO NOT USE THIS FORM FOR PROPOSALS TO DRILL OR TO DEEPEN OR PLUG BACK TO A DIFFERENT RESERVOIR USE "APPLICATION FOR PERMIT" (FORM C-101) FOR SUCH PROPOSALS.)	
1. Type of Well: Oil Well <input type="checkbox"/> Gas Well <input checked="" type="checkbox"/> Other	
2. Name of Operator <b>ConocoPhillips Company</b>	
3. Address of Operator P.O. Box 4289, Farmington, NM 87499-4289	
4. Well Location Unit Letter <b>E</b> : <b>1430</b> feet from the <b>North</b> line and <b>1035</b> feet from the <b>West</b> line Section <b>32</b> Township <b>30N</b> Range <b>5W</b> NMPM <b>Rio Arriba County</b>	
11. Elevation (Show whether DR, RKB, RT, GR, etc.) 6392' GR	

12. Check Appropriate Box to Indicate Nature of Notice, Report or Other Data

NOTICE OF INTENTION TO:

PERFORM REMEDIAL WORK ☐ PLUG AND ABANDON ☒  
TEMPORARILY ABANDON ☐ CHANGE PLANS ☐  
PULL OR ALTER CASING ☐ MULTIPLE COMPL ☐  
DOWNHOLE COMMINGLE ☐

SUBSEQUENT REPORT OF:

REMEDIAL WORK ☐ ALTERING CASING ☐  
COMMENCE DRILLING OPNS. ☐ P AND A ☐  
CASING/CEMENT JOB ☐

OTHER: ☐

OTHER: ☐

13. Describe proposed or completed operations. (Clearly state all pertinent details, and give pertinent dates, including estimated date of starting any proposed work). SEE RULE 1103. For Multiple Completions: Attach wellbore diagram of proposed completion or recompletion.

ConocoPhillips requests permission to P&A the subject well per the attached procedure, current and proposed wellbore schematics.

RCVD APR 18 '12  
OIL CONS. DIV.  
DIST. 3

Spud Date:

Rig Released Date:

I hereby certify that the information above is true and complete to the best of my knowledge and belief.

SIGNATURE Dollie L. Busse TITLE Staff Regulatory Technician DATE 4/17/12

Type or print name Dollie L. Busse E-mail address: dollie.l.busse@conocophillips.com PHONE: 505-324-6104

For State Use Only

APPROVED BY: Bob Zell TITLE Deputy Oil & Gas Inspector, DATE 4-19-12

Conditions of Approval (if any).

A

**ConocoPhillips**  
**SAN JUAN 30-5 UNIT 231A**  
**Expense - P&A**

Lat 36° 46' 20.676" N

Long 107° 23' 8.16" W

**PROCEDURE**

**This project requires a NMOCD C-144 CLEZ Closed-Loop System Permit for the use of an A-Plus steel tank to handle waste fluids circulated from the well and cement wash up.**

1. Hold pre-job safety meeting. Comply with all NMOCD, BLM, and COPC safety and environmental regulations. Test rig anchors prior to moving in rig.
2. MIRU work over rig. Check casing, tubing, and bradenhead pressures and record them in Wellview.
3. When an existing primary valve (i.e. casing valve) is to be used, the existing piping should be removed and replaced with the appropriate piping for the intended operation.
4. Pressure test the tubing before unseating the pump. TOOH with rods and lay down (per pertinent data sheet).
5. ND wellhead and NU BOPE. Function test BOP. PU and remove tubing hanger.
6. TOOH with tubing (per pertinent data sheet).

<b>Rods:</b>	Yes	<b>Size:</b>	3/4"	<b>Length:</b>	3484'
<b>Tubing:</b>	Yes	<b>Size:</b>	2-3/8"	<b>Length:</b>	3499'
<b>Packer:</b>	No	<b>Size:</b>		<b>Depth:</b>	

Round trip casing scraper to the top of the 5-1/2" liner.

**All cement volumes use 100% excess outside pipe and 50' excess inside pipe. The stabilizing wellbore fluid will be 8.3 ppg, sufficient to balance all exposed formation pressures. All cement will be ASTM Type II mixed at 15.6 ppg with a 1.18 cf/sk yield.**

**7. Plug 1 (Fruitland Perfs, Intermediate Shoe, Fruitland Top, Kirtland Top, Ojo Alamo, 2684-3194', 108 Sacks Class B Cement)**

TIH with tubing and set 7" cement retainer at 3194'. Load casing and circulate well clean. Pressure test casing to 800#. If casing does not test, then spot or tag subsequent plugs as appropriate. Mix 108 sxs of Class B cement and spot above the cement retainer to isolate the FC perforations intermediate shoe, FC top, Kirtland top, and Ojo Alamo. PUH

**8. Plug 2 (Nacimiento, 1258-1358', 29 Sacks Class B Cement)**

Mix 29 sxs of Class B cement and spot plug to isolate the Nacimiento top. PUH.

**9. Plug 3 (Surface Shoe and Surface Plug, 0-283', 65 Sacks Class B Cement)**

Attempt to pressure test the bradenhead annulus to 300 psi; note the volume to load. If the BH annulus holds pressure, then establish circulation out casing valve with water. Mix 65 sxs cement and spot a balanced plug from 283' to surface, circulate good cement out casing valve. TOOH and LD tubing. Shut well in and WOC. If the BH annulus does not test, then perforate at the appropriate depth and attempt to circulate cement to surface filling the casing from 283' and the annulus from the squeeze holes to surface. Shut in well and WOC.

10. Nipple down BOP and cut off casing below the casing flange. Install P&A marker with cement to comply with regulations. Rig down, move off location, cut off anchors, and restore location.

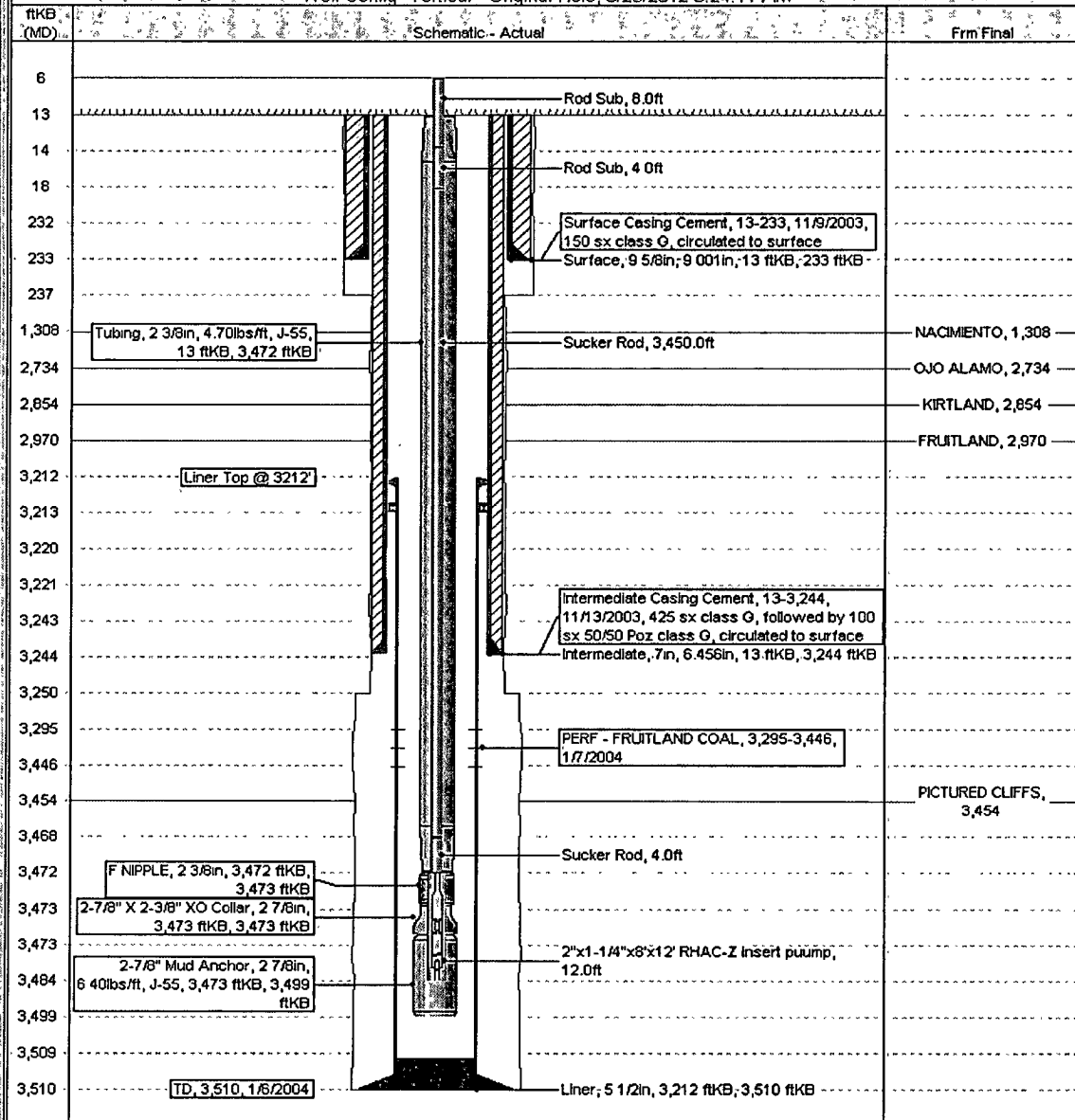
ConocoPhillips

Well Name: SAN JUAN 30-5 UNIT #231A

Current Schematic

APIT Unit 3003927514	Surface Legal Location NMPM-30N-05W-32-E	Field Name FC	License No	State/Province NEW MEXICO	Well Configuration Type Vertical	Edit
Ground Elevation (ft) 6,591.00	Original R&RT Elevation (ft) 6,604.00	KI-Ground Distance (ft) 13.00	KI-Casing Flange Distance (ft)	KI-Tubing Hanger Distance (ft)		

Well Config: Vertical - Original Hole, 3/26/2012 8:24:11 AM



# Schematic

ConocoPhillips

Well Name: SAN JUAN 30-5 UNIT #231A

API/UNIT 3003927514	Surface Legal Location NMPM-30N-05W-32-E	Field Name FC	License No.	State/Province NEW MEXICO	Well Configuration Type Vertical	<a href="#">Edit</a>
Ground Elevation (ft) 6,591.00	Original KB/RT Elevation (ft) 6,604.00	KB-Ground Distance (ft) 13.00	KB-Casing Flange Distance (ft)	KB-Tubing Hanger Distance (ft)		

Well Config: Vertical - Original Hole, 1/1/2020

ftKB (MD)	Frm Final	Schematic - Actual
6		
13		
14		
18		
232		
233	Surface, 9 5/8in, 9,001in, 13 ftKB, 233 ftKB	Surface Casing Cement, 13-233, 11/9/2003, 150 sx class G, circulated to surface
237		
283		Plug #3, 13-283, 1/1/2020, Mix 65 sxs cement and spot a balanced plug from 283' to surface, circulate good cement out casing valve.
1,258		
1,308	NACIMIENTO, 1,308	
1,358		Plug #2, 1,258-1,358, 1/1/2020, Mix 29 sxs of Class B cement and spot plug to isolate the Nacimiento top.
2,684		
2,734	OJO ALAMO, 2,734	
2,854	KIRTLAND, 2,854	
2,970	FRUITLAND, 2,970	
3,194		Plug #1, 2,684-3,194, 1/1/2020, Mix 108 sxs of Class B cement and spot above the cement retainer to isolate the FC perforations intermediate shoe, FC top, Kirtland top, and Ojo Alamo.
3,195	Cement Retainer, 3,194-3,195	
3,212	Liner Top @ 3212'	
3,213		
3,220		
3,221		
3,243		
3,244	Intermediate, 7in, 6,456in, 13 ftKB, 3,244 ftKB	Intermediate Casing Cement, 13-3,244, 11/13/2003, 425 sx class G, followed by 100 sx 50/50 Poz class G, circulated to surface
3,250		
3,295	PERF - FRUITLAND COAL, 3,295-3,446, 1/7/2004	
3,446		
3,454	PICTURED CLIFFS, 3,454	
3,468		
3,472		
3,473		
3,473		
3,484		
3,499		
3,509	Liner, 5 1/2in, 3,212 ftKB, 3,510 ftKB	
3,510	TD, 3,510, 1/6/2004	