

UNITED STATES
DEPARTMENT OF THE INTERIOR
BUREAU OF LAND MANAGEMENT

Sundry Notices and Reports on Wells

1. Type of Well
GAS

2. Name of Operator

**BURLINGTON
RESOURCES**

OIL & GAS COMPANY

3. Address & Phone No. of Operator

PO Box 4289, Farmington, NM 87499 (505) 326-9700

4. Location of Well, Footage, Sec., T, R, M

1885' FNL, 660' FWL, Sec.32, T-28-N, R-6-W, NMPM

5. Lease Number
NMSF079050C

6. If Indian, All. or
Tribe Name

7. Unit Agreement Name
San Juan 28-6 Unit

8. Well Name & Number
San Juan 28-6 Unit 132N

9. API Well No.
30-039-29330

10. Field and Pool
Basin DK/Blanco MV

11. County and State
Rio Arriba, NM

12. CHECK APPROPRIATE BOX TO INDICATE NATURE OF NOTICE, REPORT, OTHER DATA

Type of Submission

☒ Notice of Intent

☐ Subsequent Report

☐ Final Abandonment

Type of Action

☐ Abandonment

☐ Recompletion

☐ Plugging Back

☐ Casing Repair

☐ Altering Casing

☒ Other Change Location

☐ Change of Plans

☐ New Construction

☐ Non-Routine Fracturing

☐ Water Shut off

☐ Conversion to Injection

13. Describe Proposed or Completed Operations

It is intended to change the location of this well from 1860' FNL, 660' FWL to 1885' FNL, 660' FWL within existing disturbance. The well was moved due to boulders in the way during construction.



14. I hereby certify that the foregoing is true and correct.

Signed Frances Bend Title Regulatory Specialist Date 03/03/05
fsb

(This space for Federal or State Office use)

APPROVED BY Bruce Title ERS Date 3/4/05

CONDITION OF APPROVAL, if any:

Title 18 U.S.C. Section 1001, makes it a crime for any person knowingly and willfully to make to any department or agency of the United States any false, fictitious or fraudulent statements or representations as to any matter within its jurisdiction.

NMOC

District I
PO Box 1980, Hobbs, NM 88241-1980

District II
PO Drawer DD, Artesia, NM 88211-0719

District III
1000 Rio Brazos Rd., Aztec, NM 87410

District IV
PO Box 2088, Santa Fe, NM 87504-2088

State of New Mexico
Energy, Minerals & Natural Resources Department

OIL CONSERVATION DIVISION
PO Box 2088
Santa Fe, NM 87504-2088

Form C-102
Revised February 21, 1994
Instructions on back
Submit to Appropriate District Office
State Lease - 4 Copies
Fee Lease - 3 Copies

☐ AMENDED REPORT

WELL LOCATION AND ACREAGE DEDICATION PLAT

| | | | |
|------------------------------------|---|----------------------------------|--|
| *API Number 30-039-29330 | | *Pool Code 72319/71599 | *Pool Name Blanco Mesaverde/Basin Dakota |
| *Property Code 7462 | *Property Name SAN JUAN 28-6 UNIT | | *Well Number 132N |
| *GRID No. 14538 | *Operator Name BURLINGTON RESOURCES OIL & GAS COMPANY, LP | | *Elevation 6223' |

¹⁰ Surface Location

| UL or lot no. | Section | Township | Range | Lot Idn | Feet from the | North/South line | Feet from the | East/West line | County |
|---------------|---------|----------|-------|---------|---------------|------------------|---------------|----------------|------------|
| E | 32 | 28N | 6W | | 1885 | NORTH | 660 | WEST | RIO ARriba |


¹¹ Bottom Hole Location If Different From Surface

| UL or lot no. | Section | Township | Range | Lot Idn | Feet from the | North/South line | Feet from the | East/West line | County |
|-------------------------------|---------|----------|-------|---------|-------------------------------|----------------------------------|-------------------------|----------------|--------|
| | | | | | | | | | |
| ¹² Dedicated Acres | | | | | ¹³ Joint or Infill | ¹⁴ Consolidation Code | ¹⁵ Order No. | | |

NO ALLOWABLE WILL BE ASSIGNED TO THIS COMPLETION UNTIL ALL INTERESTS HAVE BEEN CONSOLIDATED OR A NON-STANDARD UNIT HAS BEEN APPROVED BY THE DIVISION

| | | | | | |
|--|--|---|--|----------|--|
| ¹⁶ 2640.00' 1885' LAT: 36°37'19.23"N LONG: 107°29'79.28"W DATUM: NAD27 660' 755' | | 5280.00' LEASE SF-079050 C Reissued to show amended location 1980' | | 2640.00' | |
| 1320.00' | | LEASE SF-079049 B | | 1320.00' | |
| 1415.04' | | 32 | | 1412.40' | |
| LEASE SF-079051 | | 5280.00' | | | |
| LOT 4 | | LOT 3 | | LOT 2 | |
| | | | | LOT 1 | |

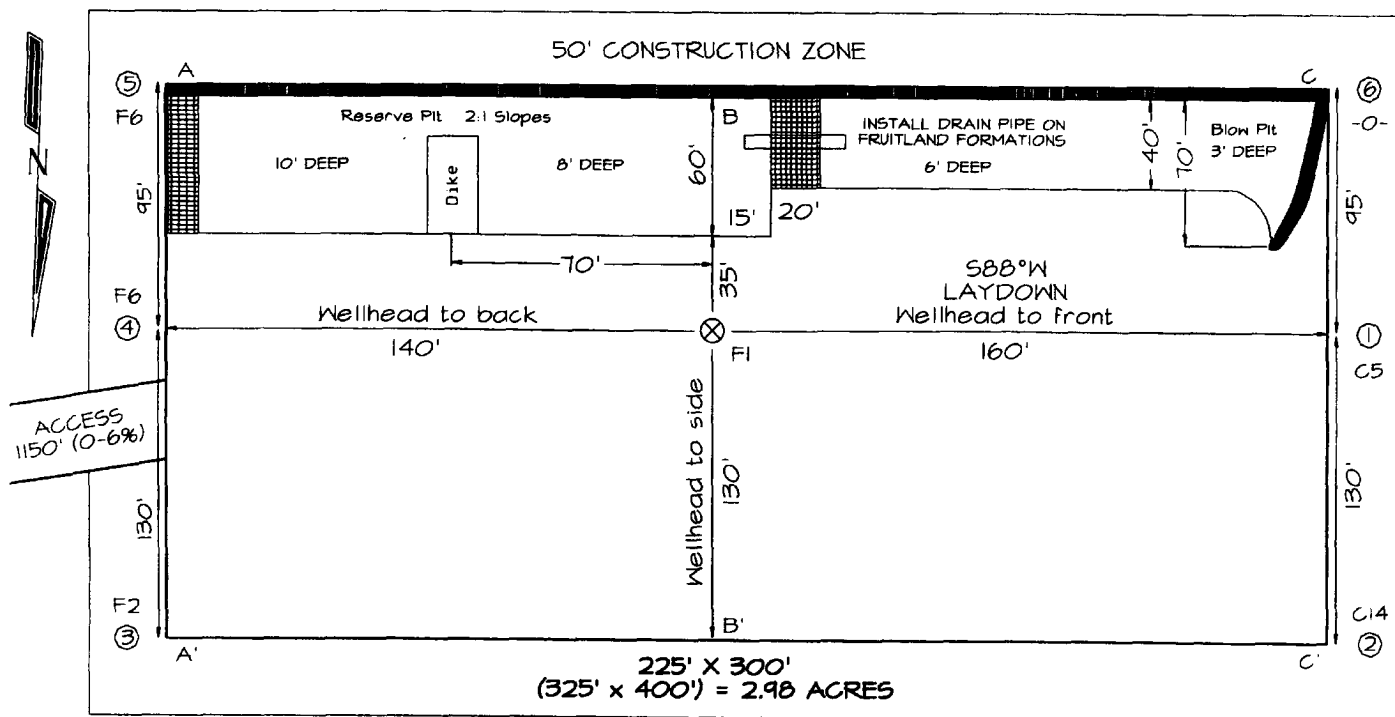
¹⁷ OPERATOR CERTIFICATION
I hereby certify that the information contained herein is true and complete to the best of my knowledge and belief
Nancy Oltmanns
Signature
Nancy Oltmanns
Printed Name
Senior Staff Specialist
Title
3-16-05
Date

¹⁸ SURVEYOR CERTIFICATION
I hereby certify that the well location shown on this plat was plotted from field notes of actual surveys made by me or under my supervision, and that the same is true and correct to the best of my belief
Survey Date: FEBRUARY 1, 2005
Signature and Seal of Professional Surveyor

JASON C. EDWARDS
Certificate Number 15269

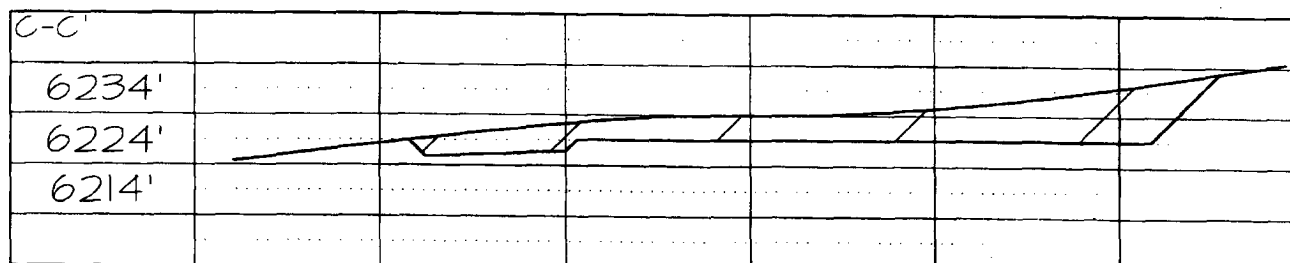
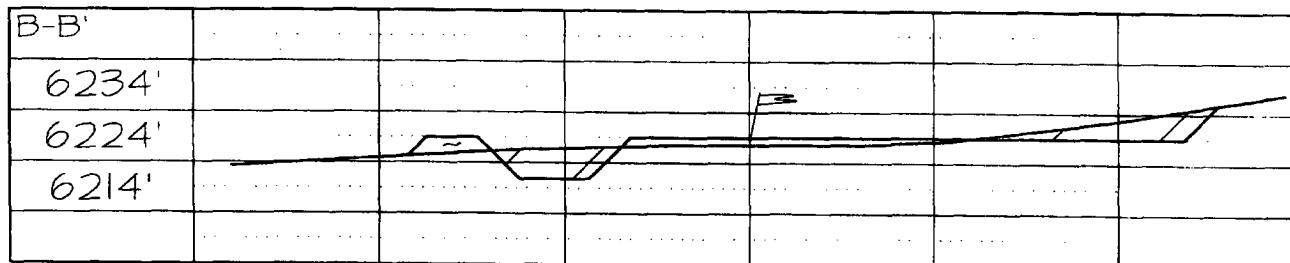
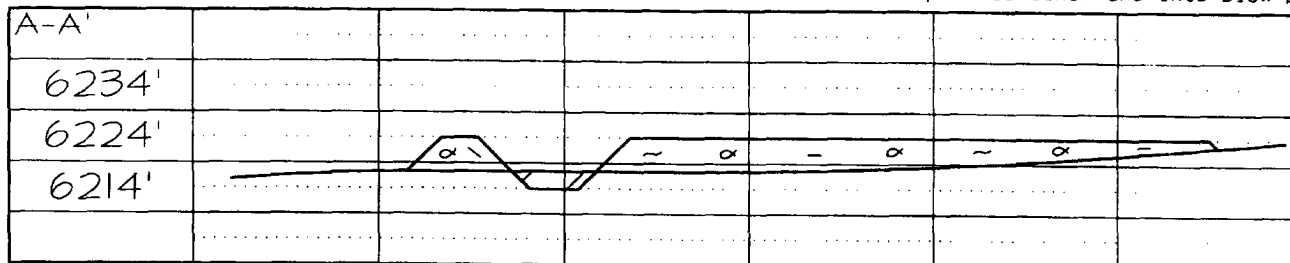
PLAT #1

BURLINGTON RESOURCES OIL & GAS COMPANY, LP
SAN JUAN 28-6 UNIT #132N, 1885' FNL & 660' FWL
SECTION 32, T28N, R6W, NMPM, RIO ARriba COUNTY, NM
GROUND ELEVATION: 6223' DATE: FEBRUARY 1, 2005

LATITUDE: 36°37'12"
LONGITUDE: 107°29'48"
 DATUM: NAD1927



Reserve Pit Dike: to be 8' above Deep side (overflow - 3' wide and 1' above shallow side).
 Blow Pit: overflow pipe halfway between top and bottom and to extend over plastic liner and into blow pit.



Note: Contractor should call One-Call for location of any marked or unmarked buried pipelines or cables on well pad and/or access road at least two (2) working days prior to construction