

RCVD JUN 25 '12  
OIL CONS. DIV.

**DISTRICT I**  
1825 N. French Dr., Hobbs, N.M. 88240  
Phone: (505) 393-6161 Fax: (505) 393-0720

**DISTRICT II**  
611 S. First St., Artesia, N.M. 88210  
Phone: (505) 748-1263 Fax: (505) 748-9720

**DISTRICT III**  
1000 Rio Brazos Rd., Artesia, N.M. 87410  
Phone: (505) 334-6178 Fax: (505) 334-6170

**DISTRICT IV**  
1220 S. St. Francis Dr., Santa Fe, NM 87506  
Phone: (505) 478-3460 Fax: (505) 478-3462

State of New Mexico  
Energy, Minerals & Natural Resources Department

DIS Form C-102  
Revised August 1, 2011

Submit one copy to appropriate  
District Office

**OIL CONSERVATION DIVISION**  
1220 South St. Francis Dr.  
Santa Fe, NM 87505

☐ AMENDED REPORT

**WELL LOCATION AND ACREAGE DEDICATION PLAT**

*API Number <b>30-045-60027</b>		*Pool Code	*Pool Name <b>Pennsylvania Sand</b>
*Property Code	*Property Name <b>TOCITO</b>		*Well Number <b>1</b>
*OGRD No. <b>14538</b>	*Operator Name <b>BURLINGTON RESOURCES OIL &amp; GAS COMPANY LP</b>		*Elevation <b>5857'</b>

**10 Surface Location**

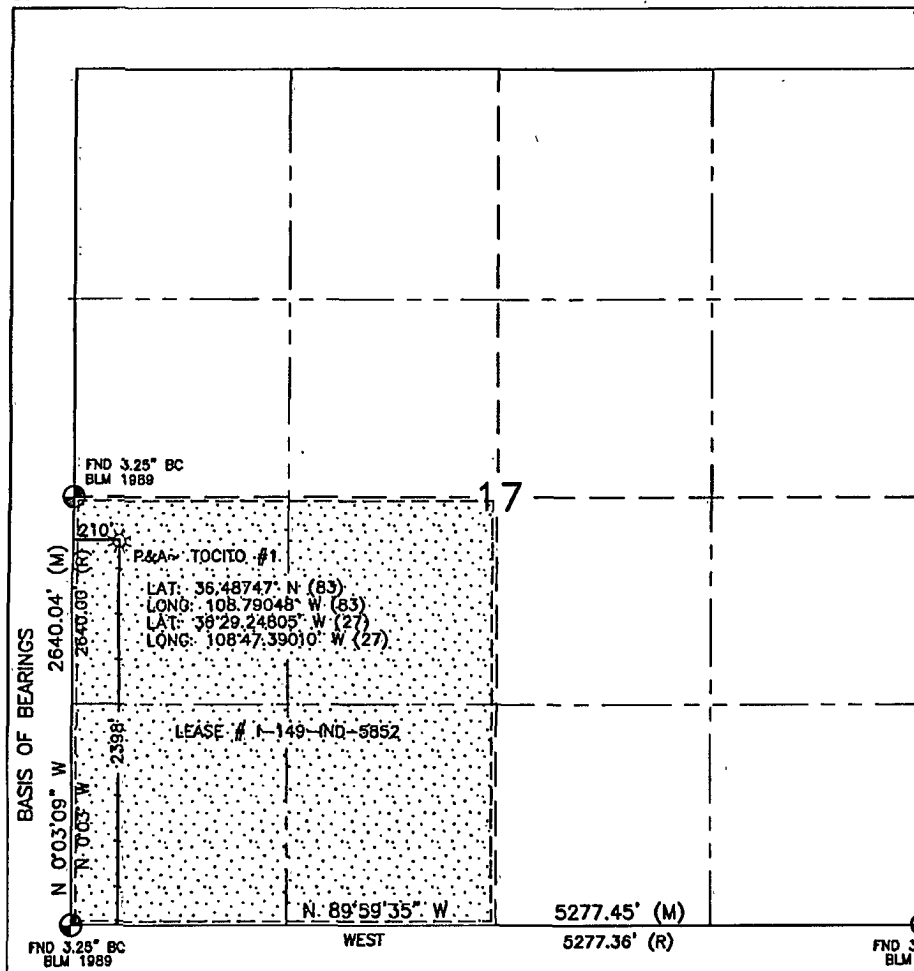
UL or lot no.	Section	Township	Range	Lot Idn	Feet from the	North/South line	Feet from the	East/West line	County
<b>L</b>	<b>17</b>	<b>26N</b>	<b>18W</b>		<b>2398'</b>	<b>SOUTH</b>	<b>210'</b>	<b>WEST</b>	<b>SAN JUAN</b>

**11 Bottom Hole Location If Different From Surface**

UL or lot no.	Section	Township	Range	Lot Idn	Feet from the	North/South line	Feet from the	East/West line	County
12 Dedicated Acres <b>160.0 Ac. - SW/4 SEC. 17</b>					13 Joint or Infill		14 Consolidation Code		15 Order No.

**NO ALLOWABLE WILL BE ASSIGNED TO THIS COMPLETION UNTIL ALL INTERESTS HAVE BEEN CONSOLIDATED  
OR A NON-STANDARD UNIT HAS BEEN APPROVED BY THE DIVISION**

16



**17 OPERATOR CERTIFICATION**

I hereby certify that the information contained herein is true and complete to the best of my knowledge and belief, and that this organization either owns a working interest or unleased mineral interest in the land including the proposed bottom hole location or has a right to drill this well at this location pursuant to a contract with an owner of such a mineral or working interest, or to a voluntary pooling agreement or a compulsory pooling order heretofore entered by the division.

*Crystal Tafoya* 6/21/12  
Signature Date

**Crystal Tafoya** 6/21/12  
Printed Name

Staff Regulatory Tech.  
E-mail Address

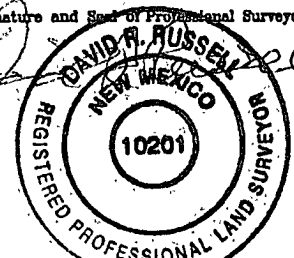
**18 SURVEYOR CERTIFICATION**

I hereby certify that the well location shown on this plat was plotted from field notes of actual surveys made by me or under my supervision, and that the same is true and correct to the best of my belief.

**JUNE 14, 2012**

Date of Survey

Signature and Seal of Professional Surveyor:



**DAVID RUSSELL**  
Certificate Number 10201