

UNITED STATES
DEPARTMENT OF THE INTERIOR
BUREAU OF LAND MANAGEMENT

APPLICATION FOR PERMIT TO DRILL OR REENTER

FORM APPROVED
OMB No. 1004-0137
Expires March 31, 2007

5. Lease Serial No.
NM-17015

6. If Indian, Allottee or Tribe Name

7. If Unit or CA Agreement, Name and No.

8. Lease Name and Well No.
Herry Monster #90S

9. API Well No.
30-045-32713

10. Field and Pool, or Exploratory
Basin Fruitland Coal

11. Sec., T. R. M. or Blk. and Survey or Area
Unit O, Sec. 11, T24N, R11W NMPM

1a. Type of work: ☒ DRILL ☐ REENTER

1b. Type of Well: ☐ Oil Well ☒ Gas Well ☐ Other ☒ Single Zone ☐ Multiple Zone

2. Name of Operator
Dugan Production Corp.

3a. Address **P. O. Box 420, Farmington, NM 87499-0420**

3b. Phone No. (include area code)
(505)325-1821

4. Location of Well (Report location clearly and in accordance with any State requirements)

At surface **1310' FSL & 1725' FEL (SW/4 SE/4) Lat. 36.1927 Long. 107.5800**

At proposed prod. zone

14. Distance in miles and direction from nearest town or post office*
8 miles west of Blanco Trading Post, NM

12. County or Parish

13. State

15. Distance from proposed*
location to nearest
property or lease line, ft.
(Also to nearest drig. unit line, if any) **1310'**

16. No. of acres in lease

960.0

17. Spacing Unit dedicated to this well

220 S/2 323.2

18. Distance from proposed location*
to nearest well, drilling, completed,
applied for, on this lease, ft. **Approx. 2700'**

19. Proposed Depth
1300'

20. BLM/BIA Bond No. on file

21. Elevations (Show whether DF, KDB, RT, GL, etc.)
6533' GL

22. Approximate date work will start*
04/08/2005

23. Estimated duration
6 days

24. Attachments

The following, completed in accordance with the requirements of Onshore Oil and Gas Order No.1, shall be attached to this form:

1. Well plat certified by a registered surveyor.
2. A Drilling Plan.
3. A Surface Use Plan (if the location is on National Forest System Lands, the SUPO shall be filed with the appropriate Forest Service Office).
4. Bond to cover the operations unless covered by an existing bond on file (see Item 20 above).
5. Operator certification
6. Such other site specific information and/or plans as may be required by the authorized officer.

25. Signature **Kurt Fagrellius** Name (Printed/Typed) **Kurt Fagrellius** Date **02/25/2005**

Title **Geologist**

Approved by (Signature) **[Signature]** Name (Printed/Typed) **[Signature]** Date **5-9-05**

Title **A FM** Office **FEO**

Application approval does not warrant or certify that the applicant holds legal or equitable title to those rights in the subject lease which would entitle the applicant to conduct operations thereon.
Conditions of approval, if any, are attached.

Title 18 U.S.C. Section 1001 and Title 43 U.S.C. Section 1212, make it a crime for any person knowingly and willfully to make to any department or agency of the United States any false, fictitious or fraudulent statements or representations as to any matter within its jurisdiction.

*(Instructions on page 2)

2005 FEB 25 PM 12 37
RECEIVED
BUREAU OF LAND MANAGEMENT
FARMINGTON NM

NMOCED

District I
PO Box 1980, Hobbs, NM 88241-1980

District II
PO Drawer DD, Artesia, NM 88211-0719

District III
1000 Rio Brazos Rd., Aztec, NM 87410

District IV
PO Box 2088, Santa Fe, NM 87504-2088

State of New Mexico
Energy, Minerals & Natural Resources Department

OIL CONSERVATION DIVISION
PO Box 2088
Santa Fe, NM 87504-2088

Form C-102
Revised February 21, 1994
Instructions on back
Submit to Appropriate District Office
State Lease - 4 Copies
Fee Lease - 3 Copies

☐ AMENDED REPORT

WELL LOCATION AND ACREAGE DEDICATION PLAT

*API Number 30-045-32713		*Pool Code 71629	*Pool Name BASIN FRUITLAND COAL
*Property Code 3706	*Property Name HERRY MONSTER		*Well Number 90S
*OGRID No. 006515	*Operator Name DUGAN PRODUCTION CORPORATION		*Elevation 6533'

¹⁰ Surface Location


UL or lot no.	Section	Township	Range	Lot Idn	Feet from the	North/South line	Feet from the	East/West line	County
0	11	24N	11W		1310	SOUTH	1725	EAST	SAN JUAN

¹¹ Bottom Hole Location If Different From Surface

UL or lot no.	Section	Township	Range	Lot Idn	Feet from the	North/South line	Feet from the	East/West line	County

¹² Dedicated Acres 323.2 320.0 Acres - (S/2)	¹³ Joint or Infill	¹⁴ Consolidation Code	¹⁵ Order No.
--	-------------------------------	----------------------------------	-------------------------

NO ALLOWABLE WILL BE ASSIGNED TO THIS COMPLETION UNTIL ALL INTERESTS HAVE BEEN CONSOLIDATED OR A NON-STANDARD UNIT HAS BEEN APPROVED BY THE DIVISION

<div><p>16</p><p>5307.72'</p><p>5368.44'</p><p>11</p><p>DUGAN NM-17015</p><p>1340'</p><p>1310'</p><p>1725'</p><p>5286.60'</p><p>5273.40'</p></div>	<div><p>¹⁷ OPERATOR CERTIFICATION</p><p>I hereby certify that the information contained herein is true and complete to the best of my knowledge and belief</p><p><i>Kurt Fagrelus</i></p><p>Signature</p><p>Kurt Fagrelus</p><p>Printed Name</p><p>Geologist</p><p>Title</p><p>12/01/04</p><p>Date</p></div>
	<div><p>¹⁸ SURVEYOR CERTIFICATION</p><p>I hereby certify that the well location shown on this plat was plotted from field notes of actual surveys made by me or under my supervision, and that the same is true and correct to the best of my belief.</p><p>Survey Date: NOVEMBER 15, 2004</p><p>Signature and Seal of Professional Surveyor</p><p></p><p><i>JASON C. EDWARDS</i></p><p>Certificate Number 15269</p></div>

Submit 3 Copies To Appropriate District
Office
District I
1625 N. French Dr., Hobbs, NM 88240
District II
1301 W. Grand Ave., Artesia, NM 88210
District III
1000 Rio Brazos Rd., Aztec, NM 87410
District IV
1220 S. St. Francis Dr., Santa Fe, NM
87505

State of New Mexico
Energy, Minerals and Natural Resources

Form C-103
March 4, 2004

OIL CONSERVATION DIVISION
1220 South St. Francis Dr.
Santa Fe, NM 87505

WELL API NO.
5. Indicate Type of Lease STATE <input type="checkbox"/> FEE <input type="checkbox"/> FED XX
6. State Oil & Gas Lease No. Federal NM-17015
7. Lease Name or Unit Agreement Name Herry Monster
8. Well Number 90-S
9. OGRID Number 006515
10. Pool name or Wildcat Basin Fruitland Coal

SUNDRY NOTICES AND REPORTS ON WELLS (DO NOT USE THIS FORM FOR PROPOSALS TO DRILL OR TO DEEPEN OR PLUG BACK TO A DIFFERENT RESERVOIR. USE "APPLICATION FOR PERMIT" (FORM C-101) FOR SUCH PROPOSALS.)	
1. Type of Well: Oil Well <input type="checkbox"/> Gas Well <input checked="" type="checkbox"/> Other	
2. Name of Operator Dugan Production Corp.	
3. Address of Operator 709 East Murray Drive, Farmington, NM 87401	
4. Well Location Unit Letter <u>0</u> : <u>1310</u> feet from the <u>South</u> line and <u>1725</u> feet from the <u>East</u> line Section <u>11</u> Township <u>24N</u> Range <u>11W</u> NMPM County <u>San Juan</u>	
11. Elevation (Show whether DR, RKB, RT, GR, etc.) 6533' G.L.	
Pit or Below-grade Tank Application (For pit or below-grade tank closures, a form C-144 must be attached)	
Pit Location: UL <u>0</u> Sect <u>11</u> Twp <u>24N</u> Rng <u>11W</u> Pit type <u>Drlg.</u> Depth to Groundwater <u>+100'</u> Distance from nearest fresh water well <u>+1000'</u> Distance from nearest surface water <u>+200'</u> Below-grade Tank Location UL _____ Sect _____ Twp _____ Rng _____ ; _____ feet from the _____ line and _____ feet from the _____ line	

12. Check Appropriate Box to Indicate Nature of Notice, Report or Other Data
NOTICE OF INTENTION TO:

PERFORM REMEDIAL WORK ☐ PLUG AND ABANDON ☐
TEMPORARILY ABANDON ☐ CHANGE PLANS ☐
PULL OR ALTER CASING ☐ MULTIPLE COMPLETION ☐
OTHER: ☐

SUBSEQUENT REPORT OF:

REMEDIAL WORK ☐ ALTERING CASING ☐
COMMENCE DRILLING OPNS. ☐ PLUG AND ABANDONMENT ☐
CASING TEST AND CEMENT JOB ☐
OTHER: ☐

13. Describe proposed or completed operations. (Clearly state all pertinent details, and give pertinent dates, including estimated date of starting any proposed work). SEE RULE 1103. For Multiple Completions: Attach wellbore diagram of proposed completion or recompletion.

Water based gel-mud will be used to drill surface and production casing hole.
Earthen pit will be lined with an impervious material. Pits will be constructed and abandoned as per BLM stipulations.

I hereby certify that the information above is true and complete to the best of my knowledge and belief. I further certify that any pit or below-grade tank has been/will be constructed or closed according to NMOCD guidelines ☒ a general permit ☐ or an (attached) alternative OCD-approved plan ☐.
Federal lease pits will be constructed and abandoned as per BLM guidelines.

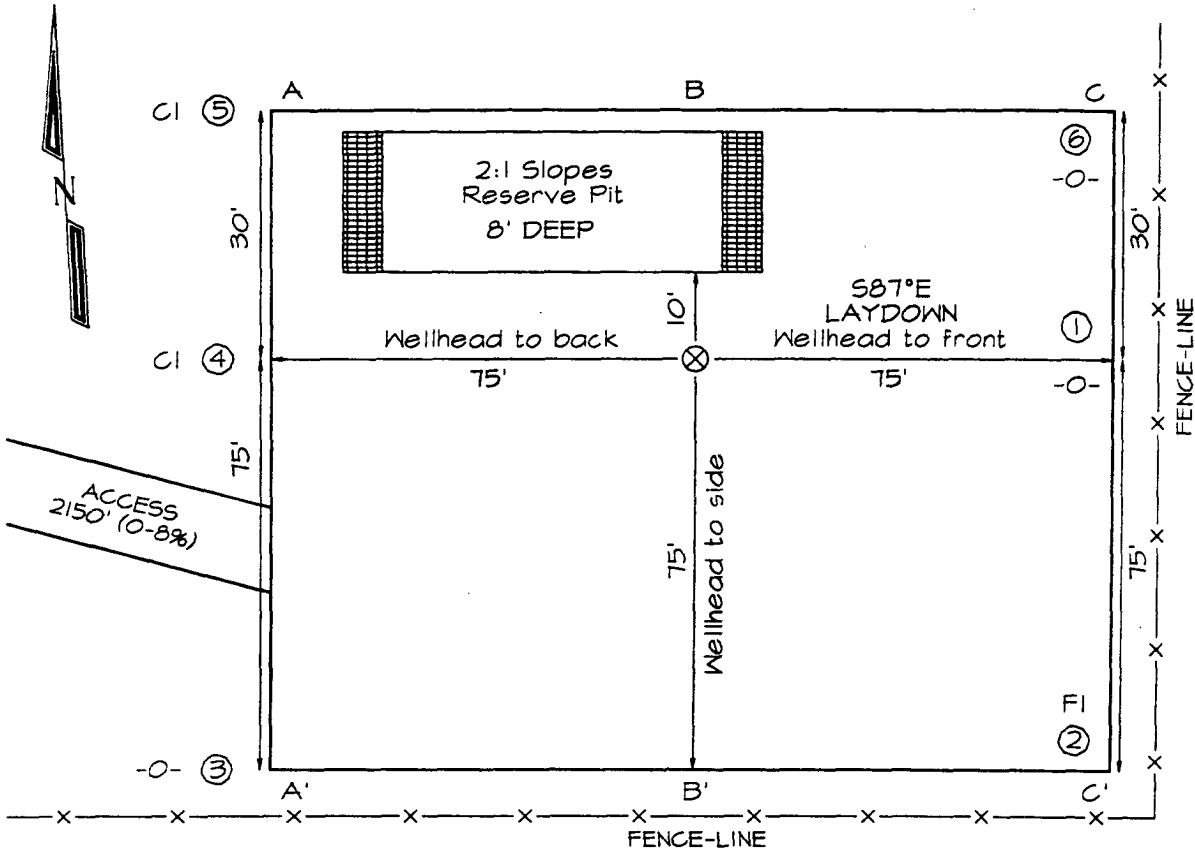
SIGNATURE Kurt Fagrellius TITLE Geologist DATE 12/01/04
Type or print name Kurt Fagrellius E-mail address: kfagrellius@duganproduction.com Telephone No. 325-1821

(This space for State use)

APPROVED BY [Signature] TITLE DEPUTY OIL & GAS INSPECTOR, DIST. 36 DATE MAY 9 2005
Conditions of approval, if any:

DUGAN PRODUCTION CORPORATION HERRY MONSTER #90S
1310' FSL & 1725' FEL, SECTION 11, T24N, R11W, NMPM
SAN JUAN COUNTY, NEW MEXICO ELEVATION: 6533'

PLAT 3.



LATITUDE: 36°19'27"
LONGITUDE: 107°58'07"
 DATUM: NAD1927

PLAT NOTE:

SURFACE OWNER
 Bureau of Land
 Management

A-A'						
6543'						
6533'						
6523'						

B-B'						
6543'						
6533'						
6523'						

C-C'						
6543'						
6533'						
6523'						

Note: Contractor should call One-Call for location of any marked or unmarked buried pipelines or cables on well pad and/or access road at least two (2) working days prior to construction

EXHIBIT B
OPERATIONS PLAN
Herry Monster #90-S

APPROXIMATE FORMATION TOPS:

Ojo Alamo	245'
Kirtland	320'
Fruitland	855'
Pictured Cliffs	1145'
Total Depth	1300'

Catch samples every 10 feet from 1050 feet to total depth.

LOGGING PROGRAM:

Run cased hole GR-CCL-CNL from total depth to surface.

CASING PROGRAM:

<u>Hole</u> <u>Size</u>	<u>Casing</u> <u>Size</u>	<u>Wt./ft.</u>	<u>Setting</u> <u>Depth</u>	<u>Grade and</u> <u>Condition</u>
11"	8-5/8"	24#	120'	J-55
7"	5-1/2"	14#	1300'	J-55

Plan to drill a 11" hole and set 120' of 8-5/8" OD, 24#, J-55 surface casing. Then plan to drill a 7" hole to total depth with gel-water mud program to test the Fruitland Coal. 5-1/2", 14#, J-55 production casing will be run and cemented. Cased hole GR-CCL-CNL log will be run. Productive zone will be perforated and fractured. After frac, the well will be cleaned out and production equipment will be installed.

CEMENTING PROGRAM:

Surface: Cement to surface with 70 cf Class B + 2% CaCl₂.
Circulate to surface.

Production Stage-Cement with 140 cf 2% lodense with
1/4# celloflake/sx followed by 70 cf Class "B" with
1/4# celloflake/sx.
Total cement slurry for production stage is 210 cf
Circulate cement to surface.

An adequate spacer will be pumped ahead of the cement slurry to help prevent mud contamination of the cement. An adequate number of casing centralizers will be run through usable water zones to ensure that casing is centralized through these zones. The adequate number of centralizers will be determined based on

API standards. Centralizers to impart a swirling action around the casing will be used just below and into the base of the lowest usable water zone. These devices will assist mud displacement, increase cement bonding potential and create an effective hydraulic seal. A chronological log will be kept which records the pump rate, pump pressure, slurry density, and slurry volume for the cement job. The log will be sent to the BLM after completion of the job.

WELLHEAD EQUIPMENT:

Huber 8-5/8"x5-1/2" casing head, 1000# WP, tested to 2000#.

Huber 5-1/2"x2-7/8" tubing head, 1000# WP, tested to 2000#.

BOP and Related Equipment will include for a 2000 psi system:
(Exhibit D)

Annular preventer, double ram, or 2 rams with one being blind and one being a pipe ram.

Kill line (2" minimum)

1 kill line valve (2" minimum)

1 choke line valve

2 chokes

Upper kelly cock valve with handle available

Safety valve and subs to fit all drill string connections in use.

Pressure gauge on choke manifold.

2" minimum choke line.

Fill-up line.

Contacts:

Dugan Prod.Corp. Office & Radio Dispatch: 325-1821

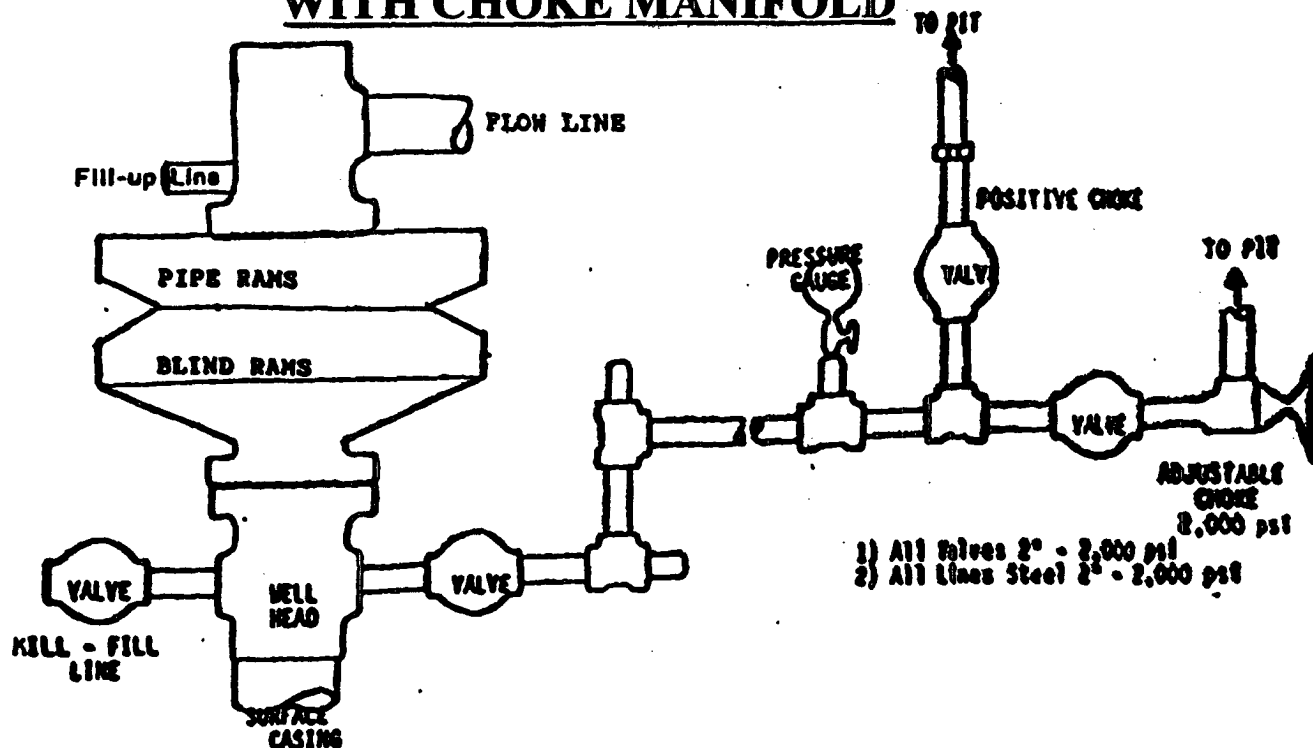
Mark Brown	327-3632 (H)
	320-8247 (M)

Kurt Fagrelus	325-4327 (H)
	320-8248 (M)

John Alexander	325-6927 (H)
	320-1935 (M)

BOP DIAGRAM WITH CHOKE MANIFOLD

EXHIBIT D.



BOP and Related Equipment will include for a 2000 psi system:

2000 PSI DOUBLE RAM BLOWOUT PREVENTER

Kill line (2" minimum)

1 kill line valve (2" minimum)

1 choke line valve

2 chokes

Upper kelly cock valve with handle available

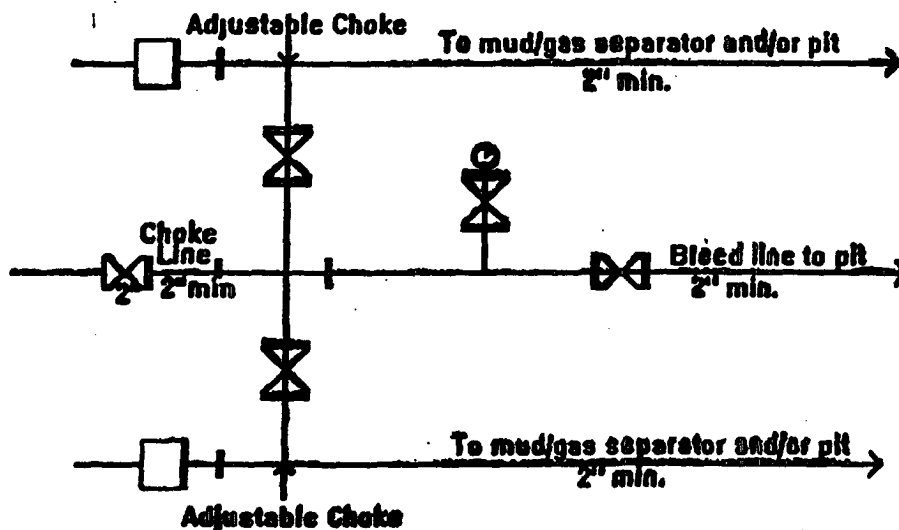
Safety valve and subs to fit all drill string connections in use

Pressure gauge on choke manifold

2" minimum choke line

Fill-up line above the uppermost preventer

BOP equipment will be tested as required in Section III A.1 of Onshore Order 2, plus a 30% safety factor.



2M Choke Manifold Equipment - Configuration May Vary

DUGAN PRODUCTION CORP.
HERRY MONSTER #90-S