

RECEIVED

FORM APPROVED
OMB NO. 1004-0136
Expires: November 30, 2000

UNITED STATES
DEPARTMENT OF THE INTERIOR
BUREAU OF LAND MANAGEMENT
APPLICATION FOR PERMIT TO DRILL OR REENTER

1a. Type of Work <input checked="" type="checkbox"/> DRILL <input type="checkbox"/> REENTER		3. Lease Serial No. NM-03358
1b. Type of Well <input type="checkbox"/> Oil Well <input checked="" type="checkbox"/> Gas Well <input type="checkbox"/> Other <input type="checkbox"/> Single Zone <input checked="" type="checkbox"/> Multiple Zone		6. If Indian, Allottee or Tribe Name N/A
2. Name of Operator Attn: Diane Busch Devon Energy Production Company, L.P.		7. If Unit or CA Agreement, Name and No. NORTHEAST BLANCO UNIT
3a. Address 20 N. Broadway Oklahoma City, OK 73102		8. Lease Name and Well No. NEBU 311M
3b. Phone No. (include area code) (405) 228-4362		9. API Well No. 30045 31261
4. Location of well (Report location clearly and in accordance with any State requirements. *) At surface 1120' FSL & 670' FWL SW SW Unit M At bottom hole Same At proposed prod. zone Same		10. Field and Pool, or Exploratory Blanco Mesaverde Basin Dakota
14. DISTANCE IN MILES AND DIRECTION FROM NEAREST TOWN OR POST OFFICE* Approximately 24 miles southeast of Ignacio Colorado		11. Sec., T., R., M., or Blk. And Survey or Area Sec. 13 , T 31N , R 7W M
15. Distance from proposed* location to nearest property or lease line, ft. (Also to nearest drlg unit line, if any) 670'	16. No. of Acres in lease 2397	17. Spacing Unit dedicated to this well 320 w/2
18. Distance from proposed location* to nearest well, drilling, completed, applied for, on this lease, ft.	19. Proposed Depth 8190'	20. BLM/ BIA Bond No. on file CO-1104
21. Elevations (Show whether DF, RT, GR, etc.) 6467' GL	22. Approximate date work will start* Upon Approval	23. Estimated Duration 20 Days

24. Attachments

The following, completed in accordance with the requirements of Onshore Oil and Gas Order No. 1 shall be attached to this form:

- | | |
|---|---|
| 1. Well plat certified by a registered surveyor. | 4. Bond to cover the operations unless covered by existing bond on file (see item 20 above). |
| 2. A Drilling Plan. | 5. Operator certification. |
| 3. A Surface Use Plan (if the location is on National Forest System Lands, SUPO shall be filed with the appropriate Forest Service Office). | 6. Such other site specific information and/ or plans as may be required by the authorized officer. |

25. Signature <i>Diane Busch</i>	Name (Printed/ Typed) Diane Busch	Date 11-11-02
Title Sr. Operations Technician		
Approved By (Signature) <i>David J. Manikiewicz</i>	Name (Printed/ Typed) David J. Manikiewicz	Date DEC 17 2002
Title Office		

Application approval does not warrant or certify that the applicant holds legal or equitable title to those rights in the subject lease which would entitle the applicant to operations thereon.

Conditions of approval, if any, are attached.

Title 18 U.S.C. Section 1001 and Title 43 U.S.C. Section 1212, make it a crime for any person knowingly and willfully to make to any department or agency of the United States any false, fictitious or fraudulent statements or representations as to any matter within its jurisdiction.

* (Instructions on reverse)

DRILLING OPERATIONS AUTHORIZED ARE
SUBJECT TO COMPLIANCE WITH ATTACHED
"GENERAL REQUIREMENTS".

This action is subject to technical and
procedural review pursuant to 43 CFR 3165.3
and appeal pursuant to 43 CFR 3165.4

NMOCD

District I
PO Box 1980, Hobbs NM 88241-1980
District II
PO Drawer KK, Artesia, NM 87211-0719
District III
1000 Rio Brazos Rd., Aztec, NM 87410
District IV
PO Box 2088, Santa Fe, NM 87504-2088

State of New Mexico
Energy, Minerals & Natural Resources Department

OIL CONSERVATION DIVISION
PO Box 2088
Santa Fe, NM 87504-2088

Form C-102
Revised February 21, 1994
Instructions on back
Submit to Appropriate District Office
State Lease - 4 Copies
Fee Lease - 3 Copies

RECEIVED
2002 NOV 13 PM 12:28
070 Farmington, NM
AMENDED REPORT

WELL LOCATION AND ACREAGE DEDICATION PLAT

¹ API Number 30-045-31261	² Pool Code 72319/71599	³ Pool Name Blanco Mesaverde / Basin Dakota
⁴ Property Code 19641	⁵ Property Name NEBU311M	⁶ Well Number # 311M
⁷ OGRID No. 6137	⁸ Operator Name DEVON ENERGY PRODUCTION COMPANY, L.P.	⁹ Elevation 6467

¹⁰ Surface Location

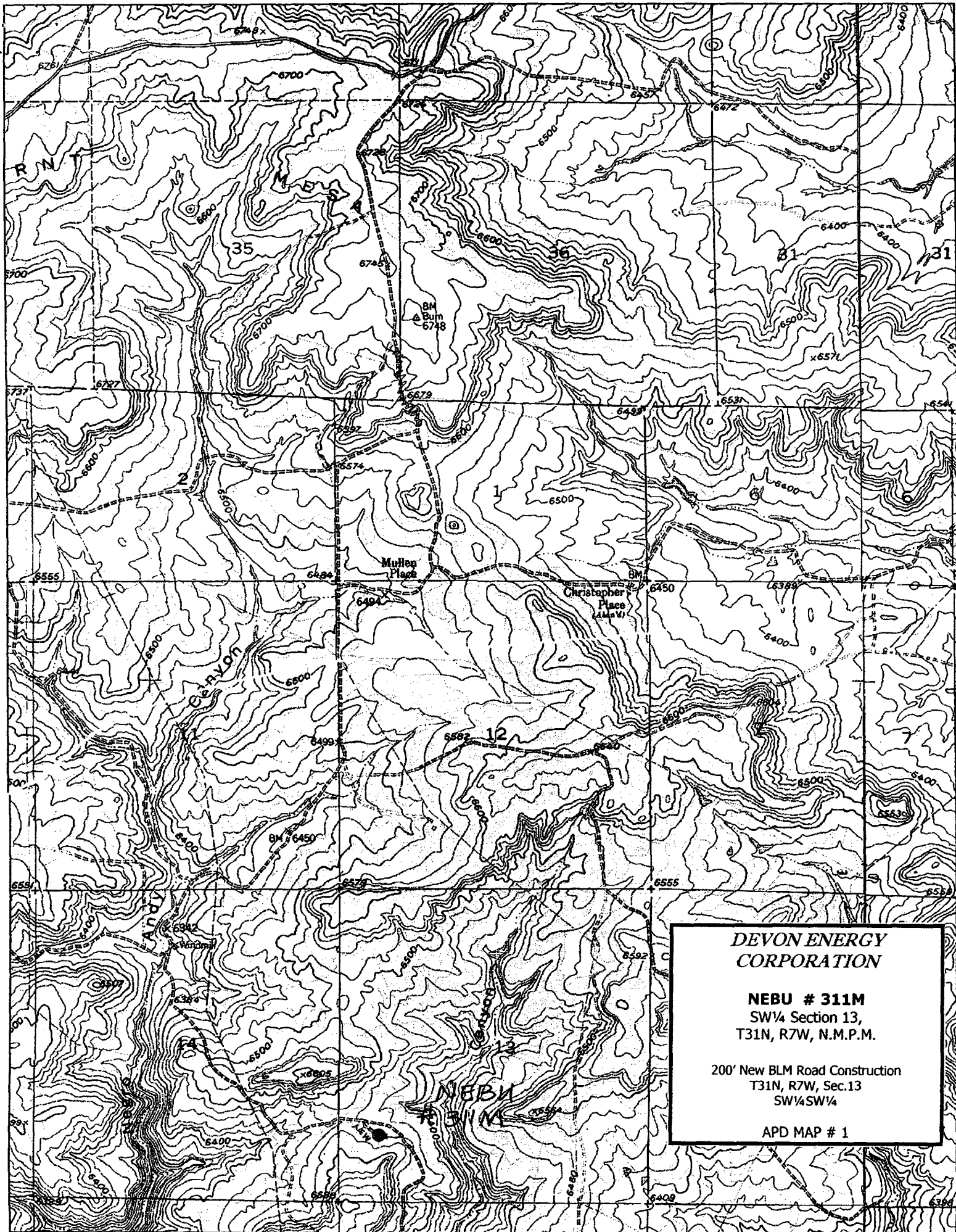
UL or Lot No. M	Section 13	Township 31 N	Range 7 W	Lot Idn	Feet from the 1120	North/South line SOUTH	Feet from the 670	East/West line WEST	County SAN JUAN
--------------------	---------------	------------------	--------------	---------	-----------------------	---------------------------	----------------------	------------------------	--------------------

¹¹ Bottom Hole Location If Different From Surface

⁷ UL or lot no.	Section	Township	Range	Lot Idn	Feet from the	North/South line	Feet from the	East/West line	County
¹² Dedicated Acres MV-W/320 DK-W/320	¹³ Joint or Infill	¹⁴ Consolidation Code	¹⁵ Order No.						

NO ALLOWABLE WILL BE ASSIGNED TO THIS COMPLETION UNTIL ALL INTERESTS HAVE BEEN CONSOLIDATED
OR A NON-STANDARD UNIT HAS BEEN APPROVED BY THE DIVISION

<div><p>16</p><p>5278(R)</p><p>670'</p><p>1120'</p><p>5275(R)</p></div>	<div><p>13</p><p>DEC 2002 RECEIVED OIL CONSERV. DIV. DIST. 3</p></div>	<div><p>¹⁷ OPERATOR CERTIFICATION</p><p>I hereby certify that the information contained herein is true and complete to the best of my knowledge and belief.</p><p><i>Diane Busch</i></p><p>Signature Diane Busch Printed Name Sr. Operations Technician Title 11-11-02 Date</p><p>¹⁸ SURVEYOR CERTIFICATION</p><p>I hereby certify that the well location shown on this plat was plotted from field notes of actual surveys made by me or under my supervision, and that the same is true and correct to the best of my belief.</p><p>September 5, 2002 Date of Survey</p><p>Signature and Seal of Professional Surveyor</p><p>GARY D. VANN NEW MEXICO REGISTERED PROFESSIONAL LAND SURVEYOR 7016</p><p>7016 Certificate Number</p></div>
---	--	---



**DEVON ENERGY
CORPORATION**

NEBU # 311M
SW¼ Section 13,
T31N, R7W, N.M.P.M.

200' New BLM Road Construction
T31N, R7W, Sec.13
SW¼SW¼

APD MAP # 1

**NEBU 311M
Unit M 13-31N-7W
San Juan Co., NM**

DRILLING PLAN

1. ESTIMATED TOPS OF IMPORTANT GEOLOGIC MARKERS & ANTICIPATED WATER, OIL, GAS OR MINERAL FORMATIONS:

Formation	Depth (ft)	Hydrocarbon/Water Bearing Zones
San Jose	Surface	
Ojo Alamo	2450	Aquifer
Kirtland	2575	
Fruitland	3040	Gas
Pictured Cliffs	3455	Gas
Lewis	3595	Gas
Intermediate TD	3745	
Huerfanito bentonite	4230	
Massive Cliff House	5435	Gas
Menefee	5495	Gas
Massive Point Lookout	5730	Gas
Mancos	6170	Gas
Gallup	7060	Gas
Greenhorn	7740	
Graneros	7790	
Dakota	7925	Gas
TD	8190	

All shows of fresh water and minerals will be adequately protected and reported.

2. PRESSURE CONTROL EQUIPMENT:

All well control equipment shall be in accordance with Onshore Order #2 for 2M systems.

The minimum specifications for pressure control equipment that will be provided are included on the attached schematic diagram which shows the size and pressure ratings.

2000# BOP With Pipe Rams
2000# BOP With Blind Rams

Auxiliary equipment to be used:

- Upper kelly cock with handle available.

The manifold includes appropriate valves and adjustable chokes. The kill line will have one check valve. Ram type preventers will be pressure tested to full working pressure (utilizing a test plug) or 70% of the internal yield pressure (without a test plug) at:

- Initial installation
- Whenever any seal subject to test pressure is broken
- Following related repairs
- At 30 day intervals

Pipe and blind rams shall be activated each trip.

A BOPE pit level drill will be conducted weekly for each drilling crew.

All tests and drills will be recorded in the drilling log.

The accumulator will have sufficient capacity to close all rams and retain 200 psi above pre-charge pressure without the use of closing unit pumps.

Master controls will be at the accumulator.

3. CASING & CEMENTING PROGRAM:

A. The proposed casing program will be as follows:

Depth	Hole Size	Size	Grade	Weight	Thread	Condition
0-250'	16"	13-3/8"	H-40	48#	STC	New
0-3000'	12-1/4"	9-5/8"	H-40	32#	STC	New
2900'-3745'	8-3/4"	7"	J-55	23 #	LTC	New
0-TD	6-1/4"	4-1/2"	K-55	11.6#	LTC	New

All casing strings below the conductor shall be pressure tested to 0.22 psi/ft. of casing string length or 1500 psi, whichever is greater, but not to exceed 70% minimum internal yield.

The bottom three joints of the surface casing will have a minimum of one centralizer per joint and one centralizer every fourth joint thereafter.

B. The proposed cementing program will be as follows:

Surface String: Cement will be circulated to surface.

Lead: 200 sks Class "B" with additives mixed at 15.6 ppg, 1.19 ft³/sks.

Intermediate String: Cement will be circulated to surface.

Lead: Cement with 550 sks 63/35 Poz cement at 12.3 ppg, 2.02 ft³/sx

Tail: 150 sx 50/50 Poz cement at 13.5 ppg, 1.40 ft³/sx

Drilling Liner: Cement from intermediate TD to liner hanger with: 125 sx CI B mixed at 15.6 ppg w/.25 pps celloflake, 2% calcium chloride. Cement yield = 1.19 ft³/sx

Production String: TOC designed to circulate to surface, cement will tie into the intermediate casing as a minimum. Volumes may vary with actual well characteristics.

Lead: 500 sks 50/50 Poz with additives mixed at 13.0 ppg, 1.47 ft³/sks.

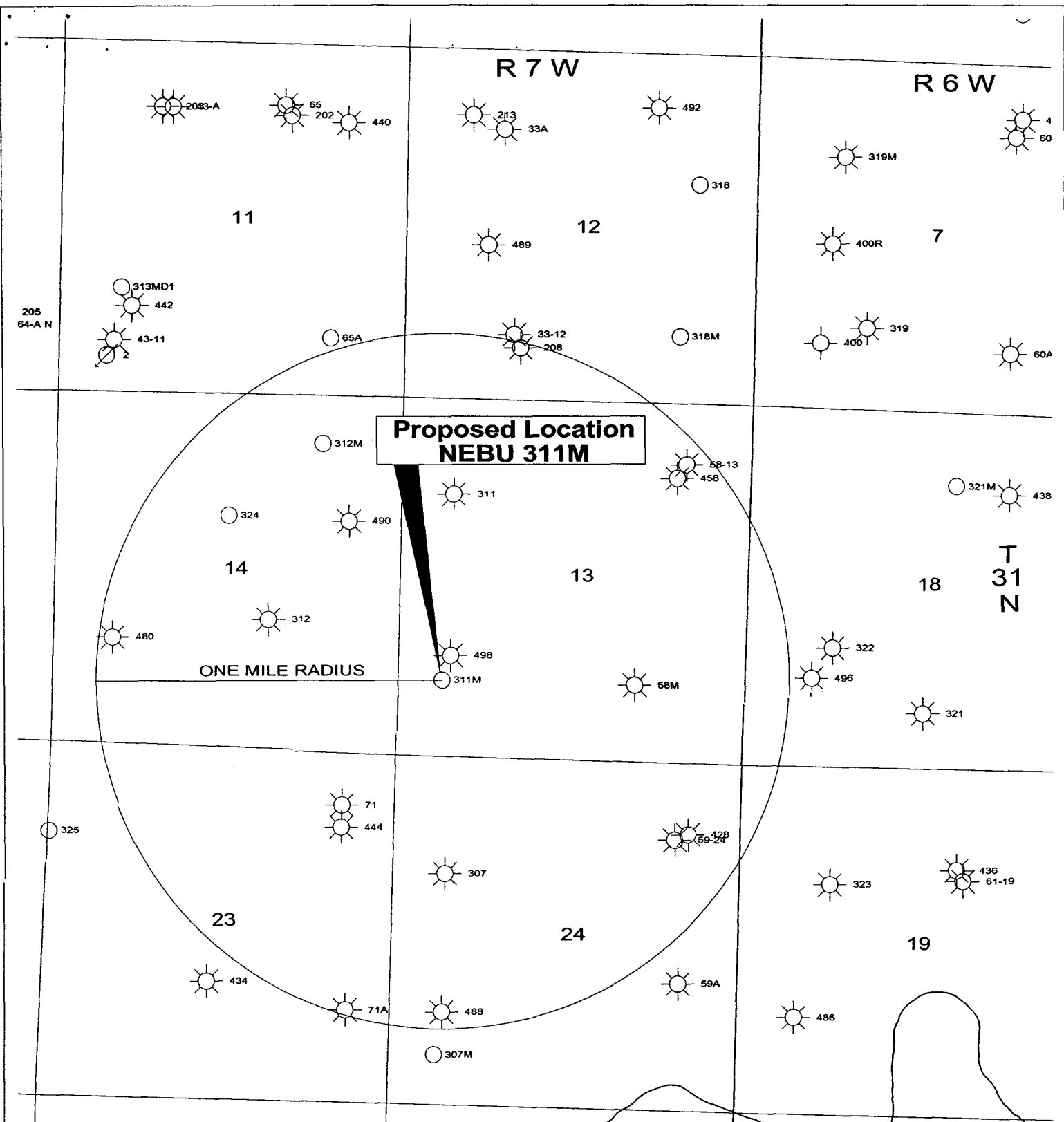
Actual volumes will be calculated and adjusted with caliper log prior to cementing.

4. DRILLING FLUIDS PROGRAM:

Interval	Type	Weight (ppg)	Viscosity	pH	Water Loss	Remarks
0-3745'	Spud-foam	8.4-9.0	29-70	8.0	NC	FW gel, LSND or stiff foam
3745-7790'	Air				NC	
7790-TD	Mud	8.5-9.0*	30-50	8.0-10.0	8-10cc @ TD	Low solids – nondispersed. * Min Wt. to control formation pressure.

NC = no control

Sufficient quantities of mud material will be maintained on site or be readily accessible for the purpose of assuring well control. SPR will be recorded on daily drilling report after mudding up. Visual mud monitoring will be conducted during operations.



**Proposed Location
NEBU 311M**

ONE MILE RADIUS

EXHIBIT D

DEVON ENERGY PROD. CO., L.P.

Proposed Location - NEBU 311M
Sec. 13-T31N-R7W

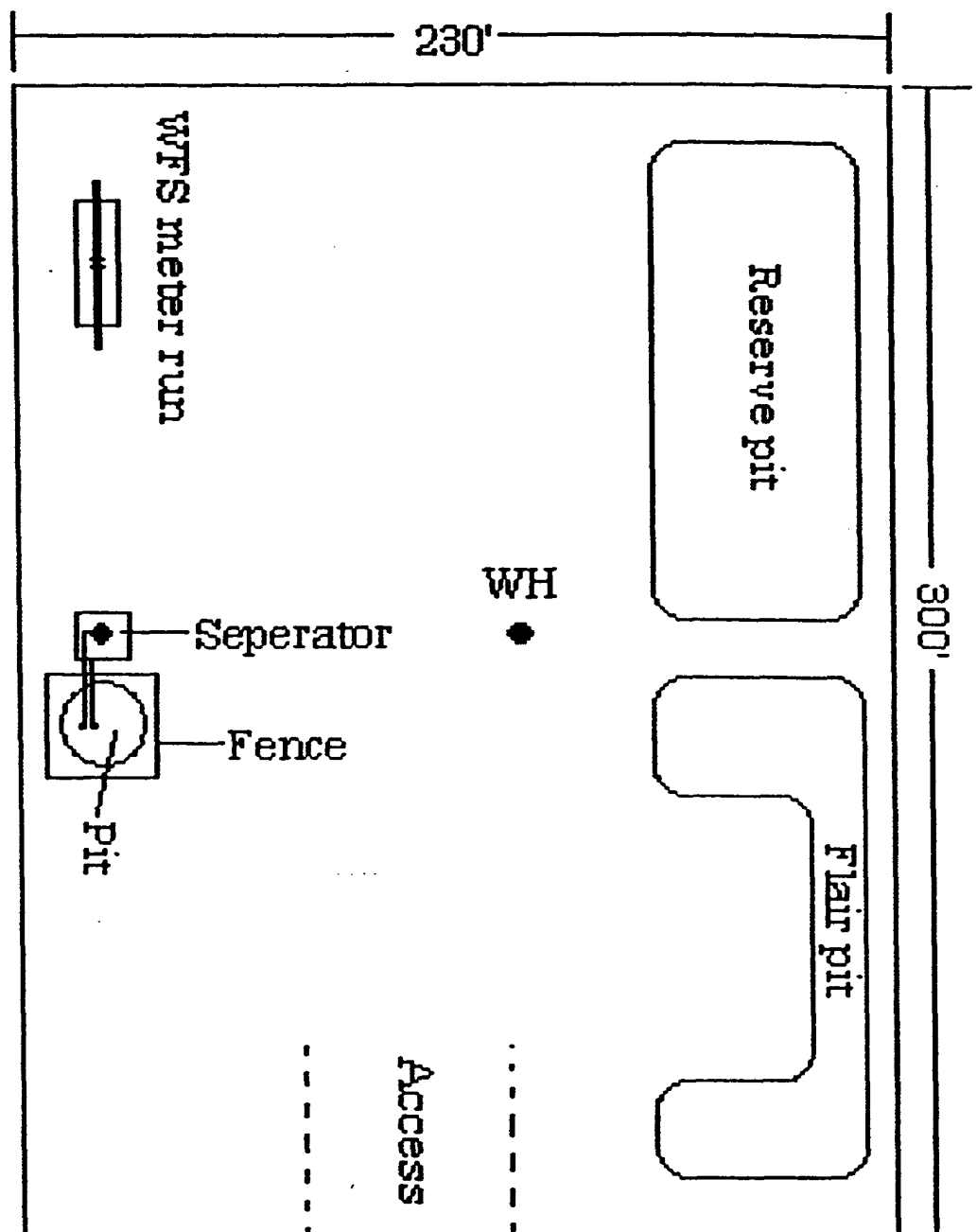
D. BUSCH

Scale 1:24000

10/7/2002

RM-SJB_CBM_FAIRWAY (

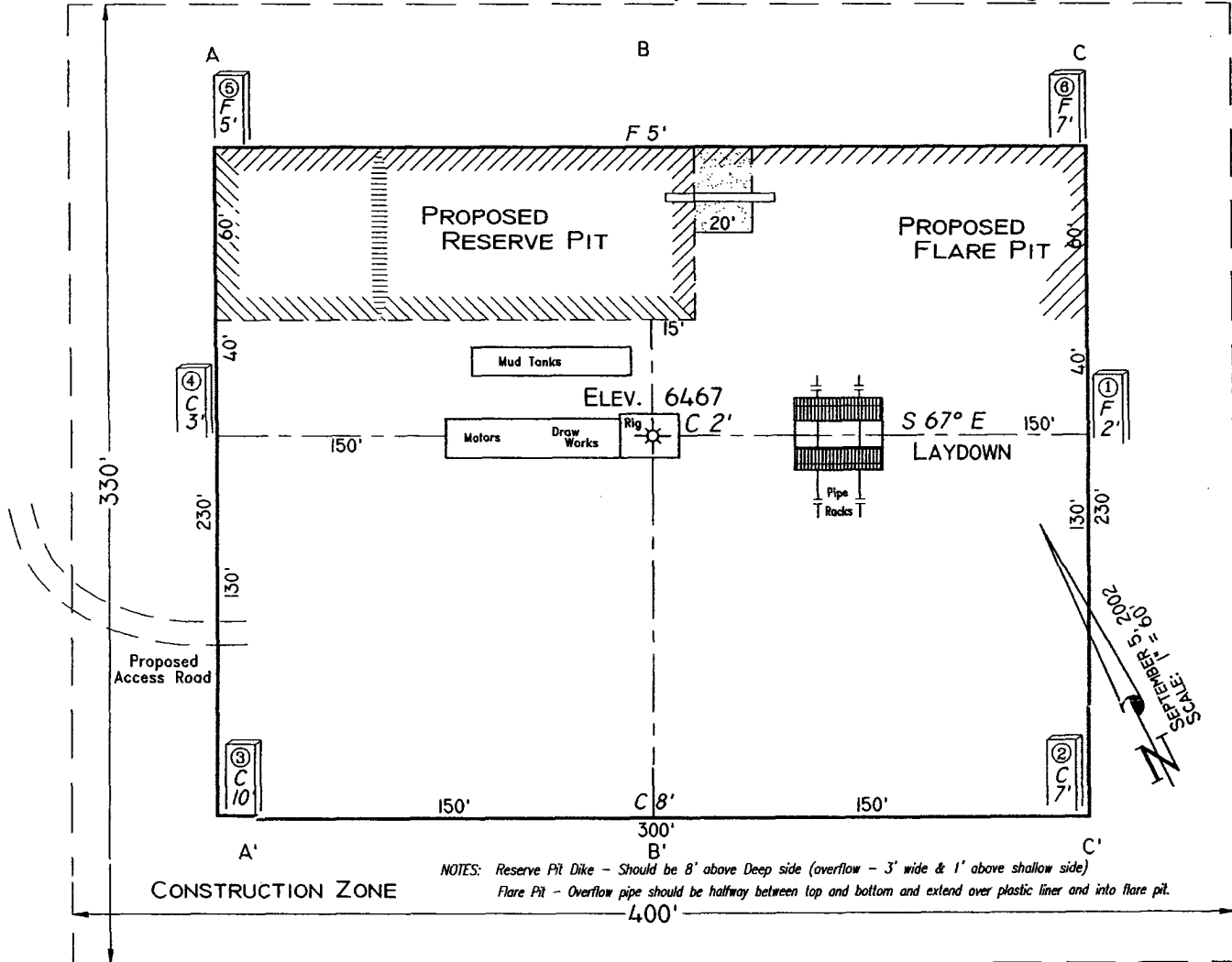
311M-13.GPF



All locations will have a gas seperator, and an 80 bbl pit(double wall , double bottom) enclosed with a fence. It is WFS responsibilty to install the meter run. It could be on either end of pad , but will always be on working side of the pad.

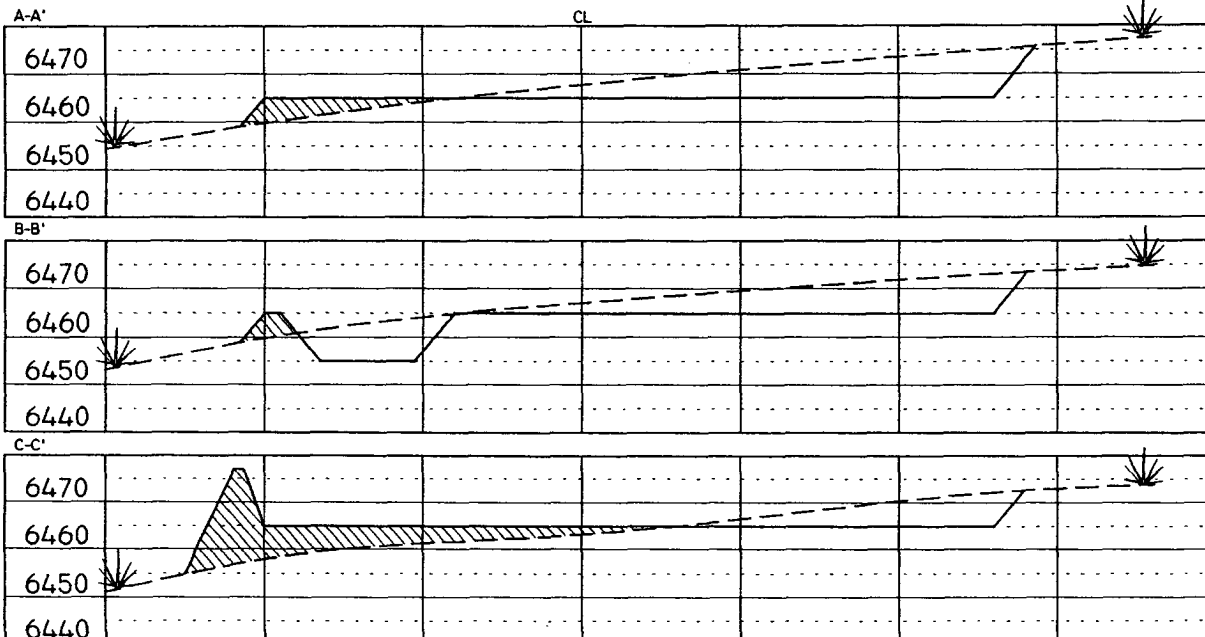
PAD LAYOUT PLAN & PROFILE
DEVON ENERGY CORPORATION
 NEBU #311M
 1120' F/SL 670' F/WL
 SEC. 13, T31N, R7W, N.M.P.M.
 SAN JUAN COUNTY, NEW MEXICO

Lat: 36°53'43.3"
 Long: 107°31'44.4"



Area of Construction Zone - 330'x400' or 3.03 acres, more or less.

SCALE: 1"=60'-HORIZ.
 1"=40'-VERT.



NOTE: Contractor should call One-Call for location of any marked or unmarked buried pipelines or cables on well pad and/or access road at least two (2) working days prior to construction.

Cuts and fills shown are approximate - final finished elevation is to be adjusted so earthwork will balance. Corner stakes are approximate and do not include additional areas needed for sideslopes and drainages. Final Pad Dimensions are to be verified by Contractor.

VANN SURVEYS
 P. O. Box 1306
 Farmington, NM