

District I  
PO Box 1980, Hobbs, NM 88241-1980  
District II  
811 S. 1st Street, Artesia, NM 88210-2834  
District III  
1000 Rio Brazos Rd., Aztec, NM 87410  
District IV  
2040 South Pacheco, Santa Fe, NM 87505

State of New Mexico  
Energy, Minerals & Natural Resources Department

OIL CONSERVATION DIVISION  
2040 South Pacheco  
Santa Fe, NM 87505

Form C-101  
Revised October 18, 1996  
Instructions on back  
Submit to Appropriate District Office  
State Lease - 6 Copies  
Fee Lease - 5 Copies

☐ AMENDED REPORT

APPLICATION FOR PERMIT TO DRILL, RE-ENTER, DEEPEN, PLUGBACK, OR ADD A ZONE

<sup>1</sup> Operator name and Address XTO Energy Inc. 2700 Farmington Ave., Bldg. K. Ste 1 Farmington, NM 87401		<sup>2</sup> OGRID Number 167067
<sup>4</sup> Property Code 22721	<sup>5</sup> Property Name Gerk Gas Com "B"	<sup>3</sup> API Number 45-31286 <sup>6</sup> Well No. #1F

<sup>7</sup> Surface Location

UL or lot no.	Section	Township	Range	Lot. Idn	Feet from the	North/South Line	Feet from the	East/West line	County
0	19	29N	09W		656'	South	2,255'	West	San Juan

<sup>8</sup> Proposed Bottom Hole Location If Different From Surface

UL or lot no.	Section	Township	Range	Lot. Idn	Feet from the	North/South Line	Feet from the	East/West line	County
<sup>9</sup> Proposed Pool 1 Basin Dakota					<sup>10</sup> Proposed Pool 2 Blanco Mesaverde				

<sup>11</sup> Work Type Code N	<sup>12</sup> Well Type Code G	<sup>13</sup> Cable/Rotary R	<sup>14</sup> Lease Type Code P (private)	<sup>15</sup> Ground Level Elevation 5,599' Ground Level
<sup>16</sup> Multiple Yes	<sup>17</sup> Proposed Depth 6,900'	<sup>18</sup> Formation Dakota	<sup>19</sup> Contractor Bearcat Drilling	<sup>20</sup> Spud Date Winter 2003

<sup>21</sup> Proposed Casing and Cement Program

Hole Size	Casing Size	Casing weight/foot	Setting Depth	Sacks of Cement	Estimated TOC
12-1/4"	9-5/8"	36.0 #/ft	260'	+140 sx	Surface
8-3/4"	7"	20.0 #/ft	3,000'	+400 sx	Surface
6-1/4"	4-1/2"	10.5 #/ft	6,900'	+310 sx	2,500'

<sup>22</sup> Describe the proposed program. If this application is to DEEPEN or PLUG BACK give the data on the present productive zone and proposed new productive zone. Describe the blowout prevention program, if any. Use additional sheets if necessary.

Drill to 260' Run new 9-5/8" csg. Cmt csg w/140 sx cl "B" cmt (15.6 ppg, 1.18 cuft/sx) w/2% CaCl & 1/4# Celloflake. Attempt to circ cmt to surface. NU BOP. Test BOP. Mix mud. Drill ahead w/8-3/4" hole to 3,000'. Run new 7" csg. Cmt csg w/250 sx Lite Weight cmt (11.4 ppg, 3.03 cuft/sx) followed by 150 sx Type III cmt (14.5 ppg, 1.39 cuft/sx). Attempt to cmt to surf.  
Drill to TD (@ 6,900'). Log well. Run new 4-1/2" csg to btm. Cmt csg with approx 60 sx Premium Lite cmt (11.8 ppg, 2.36 cuft/sx) followed by +250 sx Premium Lite HS cmt (12.5 ppg, 2.01 cuft/sx)  
Est top of cmt @ 2,500'. Verify TOC with temp survey.  
See enclosed drawing for BOP stack configuration.

<sup>23</sup> I hereby certify that the information given above is true and complete to the best of my knowledge and belief.

Signature:

*Jeffrey W. Patton*

Printed name: Jeffrey W. Patton 12/18/02

Title: Drilling Engineer

OIL CONSERVATION DIVISION

Approved by:

Title: DEPUTY OIL & GAS INSPECTOR, DIST. 3

Approval Date:

DEC 20 2002

Expiration Date:

DEC 20 2003

DISTRICT I  
1625 N. French Dr., Hobbs, N.M. 88240

DISTRICT II  
811 South First, Artesia, N.M. 88210

DISTRICT III  
1000 Rio Brazos Rd., Aztec, N.M. 87410

DISTRICT IV  
2040 South Pacheco, Santa Fe, NM 87505

State of New Mexico  
Energy, Minerals & Natural Resources Department

Form C-102  
Revised August 15, 2000

Submit to Appropriate District Office  
State Lease - 4 Copies  
Fee Lease - 3 Copies

OIL CONSERVATION DIVISION

2040 South Pacheco  
Santa Fe, NM 87505

☐ AMENDED REPORT

WELL LOCATION AND ACREAGE DEDICATION PLAT

<sup>1</sup> API Number 30-045-31286	<sup>2</sup> Pool Code 72319	<sup>3</sup> Pool Name BLANCO MESAVERDE
<sup>4</sup> Property Code 22721	<sup>5</sup> Property Name GERK GAS COM "B"	<sup>6</sup> Well Number 1F
<sup>7</sup> GRID No. 167067	<sup>8</sup> Operator Name XTO ENERGY INC.	<sup>9</sup> Elevation 5599'

<sup>10</sup> Surface Location

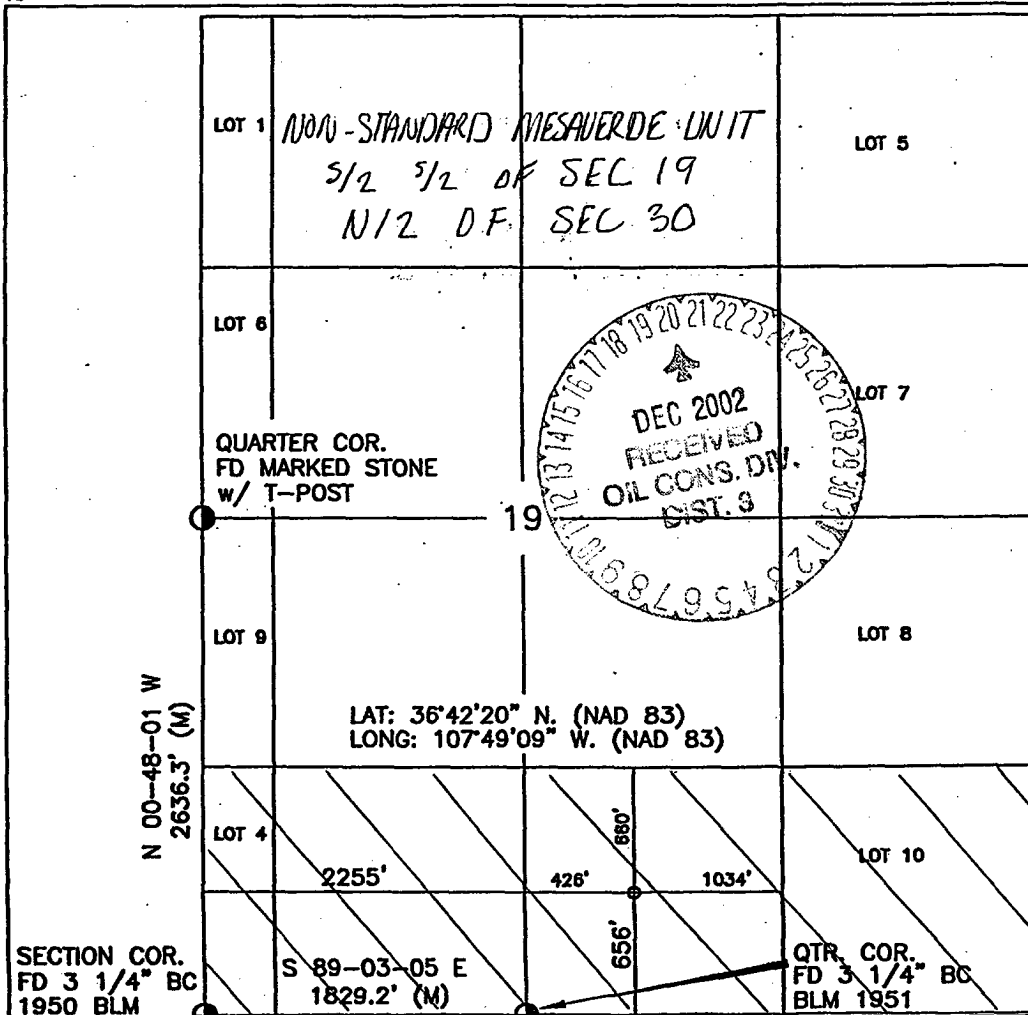
UL or lot no.	Section	Township	Range	Lot Idn	Feet from the	North/South line	Feet from the	East/West line	County
0	19	29-N	9-W		656'	SOUTH	2255'	WEST	SAN JUAN

<sup>11</sup> Bottom Hole Location If Different From Surface

UL or lot no.	Section	Township	Range	Lot Idn	Feet from the	North/South line	Feet from the	East/West line	County
<sup>12</sup> Dedicated Acres 407.56					<sup>13</sup> Joint or Infill		<sup>14</sup> Consolidation Code		<sup>15</sup> Order No. N 1098 <del>R-2046 TRACT "A"</del>

NO ALLOWABLE WILL BE ASSIGNED TO THIS COMPLETION UNTIL ALL INTERESTS HAVE BEEN CONSOLIDATED  
OR A NON-STANDARD UNIT HAS BEEN APPROVED BY THE DIVISION

16



17 OPERATOR CERTIFICATION

I hereby certify that the information contained herein is true and complete to the best of my knowledge and belief.

Signature JW Patton  
Printed Name JEFFREY W PATTON  
Title DRILLING ENGINEER  
Date 12-19-02

18 SURVEYOR CERTIFICATION

I hereby certify that the well location shown on this plat was plotted from field notes of actual surveys made by me or under my supervision, and that the same is true and correct to the best of my belief.

Date of Survey 12-19-02  
Signature and Seal of Professional Surveyor  
[Signature]  
14827  
14827  
Certificate Number

**DISTRICT I**  
1625 N. French Dr., Hobbs, N.M. 88240

**DISTRICT II**  
**811 South First, Artesia, N.M. 88210**

**DISTRICT III**  
**1000 Rio Brazos Rd., Aztec, N.M. 87410**

**DISTRICT IV**  
2040 South Pochecho, Santa Fe, NM 87505

State of New Mexico  
Geology, Minerals & Natural Resources Department

Form C-102  
Revised August 15, 2000

**Submit to Appropriate District Office**  
**State Lease — 4 Copies**  
**Fee Lease — 3 Copies**

**OIL CONSERVATION DIVISION**

2040 South Pacheco  
Santa Fe, NM 87505

☐ AMENDED REPORT

## WELL LOCATION AND ACREAGE DEDICATION PLAT

<sup>1</sup> API Number 30-045-31286		<sup>2</sup> Pool Code 71599	<sup>3</sup> Pool Name BASIN DAKOTA
<sup>4</sup> Property Code 22721	<sup>5</sup> Property Name GERK GAS COM "B"		<sup>6</sup> Well Number 1F
<sup>7</sup> OGRID No. 167067	<sup>8</sup> Operator Name XTO ENERGY INC.		<sup>9</sup> Elevation 5599'

<sup>10</sup> Surface Location

UL or lot no.	Section	Township	Range	Lot Idn	Feet from the	North/South line	Feet from the	East/West line	County
0	19	29-N	9-W		656'	SOUTH	2255'	WEST	SAN JUAN

<sup>11</sup>Bottom Hole Location If Different From Surface

UL or lot no.	Section	Township	Range	Lot Idn	Feet from the	North/South line	Feet from the	East/West line	County
---------------	---------	----------	-------	---------	---------------	------------------	---------------	----------------	--------

<sup>12</sup> Dedicated Acres 407.56	<sup>13</sup> Joint or Infill	<sup>14</sup> Consolidation Code	<sup>15</sup> Order No. R-2046 TRACT "G"
-----------------------------------------	-------------------------------	----------------------------------	---------------------------------------------

NO ALLOWABLE WILL BE ASSIGNED TO THIS COMPLETION UNTIL ALL INTERESTS HAVE BEEN CONSOLIDATED  
OR A NON-STANDARD UNIT HAS BEEN APPROVED BY THE DIVISION

18

LOT 1

NON-STANDARD DAKOTA UNIT

S 1/2 S 1/2 OF SEC 19

N 1/2 OF SEC 30

LOT 5

LOT 6

QUARTER COR.  
FD MARKED STONE  
w/ T-POST

19

LOT 7

LOT 9

LOT 8

LAT: 36°42'20" N. (NAD 83)  
LONG: 107°49'09" W. (NAD 83)

N 00-48-01 W  
2636.3' (M)

LOT 4

2255'

426'

1034'

LOT 10

S 89-03-05 E  
1829.2' (M)

SECTION COR.  
FD 3 1/4 BC  
1950 BLM

QTR. COR.  
FD 3 1/4 BC  
BLM 1951

## 17 OPERATOR CERTIFICATION

I hereby certify that the information contained herein is true and complete to the best of my knowledge and belief

Signature Jeffrey W Patton  
Printed Name JEFFREY W PATTON  
Title DRILLING ENGINEER  
Date 12-19-02

## 18 SURVEYOR CERTIFICATION

I hereby certify that the well location shown on this plot was plotted from field notes of actual surveys made by me or under my supervision, and that the same is true and correct to the best of my belief.

12/24/2001  
Date of Survey  
Signature and Seal of Professional Surveyor:  
NEW MEXICO  
REGISTERED PROFESSIONAL SURVEYOR  
14827  
14827  
Certificate Number

# BOP SCHEMATIC FOR DRILLING OPERATIONS CLASS 1 (2M) NORMAL PRESSURE

## TESTING PROCEDURE

### 1. Test BOP after installation:

Pressure test BOP to 200-300  
psig (low pressure) for 5 min.

Test BOP to Working Press or  
to 70% internal yield of surf csg  
(10 min).

### 2. Test operation of (both) rams on every trip.

### 3. Check and record Accumulator pressure on every tour.

### 4. Re-pressure test BOP stack after changing out rams.

### 5. Have kelly cock valve with handle available.

### 6. Have safety valve and subs to fit all sizes of drill string.

