

District I

1625 N. French Dr., Hobbs, NM 88240

District II

1301 W. Grand Avenue, Artesia, NM 88210

District III

1000 Rio Brazos Road, Aztec, NM 87410

District IV

1220 S. St. Francis Dr., Santa Fe, NM 87505

State of New Mexico
Energy Minerals and Natural Resources

Form C-101

May 27, 2004

Oil Conservation Division

1220 South St. Francis Dr.

Santa Fe, NM 87505

Submit to appropriate District Office

☐ AMENDED REPORT

APPLICATION FOR PERMIT TO DRILL, RE-ENTER, DEEPEN, PLUGBACK, OR ADD A ZONE

¹ Operator Name and Address Huntington Energy, L.L.C. 6301 Waterford Blvd., Suite 400 Oklahoma City, OK 73118		² OGRID Number 208706	
³ Property Code 32660		⁴ API Number 30 - 039 - 29579	
⁵ Property Name Canyon Largo Unit		⁶ Well No. 473	
⁹ Proposed Pool 1 Basin Dakota		¹⁰ Proposed Pool 2	

⁷ Surface Location

UL or lot no. F	Section 2	Township 25N	Range 7W	Lot Idn	Feet from the 1625'	North/South line North	Feet from the 1285'	East/West line West	County Rio Arriba <input checked="" type="checkbox"/>
--------------------	--------------	-----------------	-------------	---------	------------------------	---------------------------	------------------------	------------------------	--

⁸ Proposed Bottom Hole Location If Different From Surface

UL or lot no.	Section	Township	Range	Lot Idn	Feet from the	North/South line	Feet from the	East/West line	County
---------------	---------	----------	-------	---------	---------------	------------------	---------------	----------------	--------

Additional Well Information

¹¹ Work Type Code NW	¹² Well Type Code G	¹³ Cable/Rotary	¹⁴ Lease Type Code S	¹⁵ Ground Level Elevation 6874'
¹⁶ Multiple	¹⁷ Proposed Depth 7600'	¹⁸ Formation Basin Dakota	¹⁹ Contractor	²⁰ Spud Date
Depth to Groundwater > 100'		Distance from nearest fresh water well > 1000'		Distance from nearest surface water > 100'
Pit: Liner: Synthetic <input type="checkbox"/> _____ mils thick Clay <input type="checkbox"/> Pit Volume: _____ bbls Drilling Method:				
Closed-Loop System <input type="checkbox"/> Fresh Water <input checked="" type="checkbox"/> Brine <input type="checkbox"/> Diesel/Oil-based <input type="checkbox"/> Gas/Air <input type="checkbox"/>				

²¹ Proposed Casing and Cement Program

Hole Size	Casing Size	Casing weight/foot	Setting Depth	Sacks of Cement	Estimated TOC
12 1/4"	8 5/8"	24.0#	0-320'	360	Surf
7 7/8"	4 1/2"	11.6#	0-7100'	1400	

²² Describe the proposed program. If this application is to DEEPEN or PLUG BACK, give the data on the present productive zone and proposed new productive zone. Describe the blowout prevention program, if any. Use additional sheets if necessary.

Proposed Program attached.

²³ I hereby certify that the information given above is true and complete to the best of my knowledge and belief. I further certify that the drilling pit will be constructed according to NMOCD guidelines ☒, a general permit ☐, or an (attached) alternative OCD-approved plan ☐.

Printed name: Catherine Smith

Title: Land Associate

E-mail Address: csmith@huntingtonenergy.com

Date: 6/30/05

Phone: (405) 840-9876

OIL CONSERVATION DIVISION

Approved by:

Title:

Approval Date:

Expiration Date:

Conditions of Approval Attached ☐

DISTRICT I
1625 N. French Dr., Hobbs, N.M. 88240

State of New Mexico
Energy, Minerals & Natural Resources Department

Form C-102
Revised August 15, 2000

DISTRICT II
811 South First, Artesia, N.M. 88210

Submit to Appropriate District Office
State Lease - 4 Copies
Fee Lease - 3 Copies

DISTRICT III
1000 Rio Brazos Rd., Aztec, N.M. 87410

OIL CONSERVATION DIVISION
2040 South Pacheco
Santa Fe, NM 87505

DISTRICT IV
2040 South Pacheco, Santa Fe, NM 87505

☐ AMENDED REPORT

WELL LOCATION AND ACREAGE DEDICATION PLAT

¹ API Number 30-039-29579		² Pool Code 71599	³ Pool Name Basin Dakota
⁴ Property Code 32660	⁵ Property Name CANYON LARGO UNIT		⁶ Well Number 473
⁷ OGRID No. 208706	⁸ Operator Name HUNTINGTON ENERGY, LLC		⁹ Elevation 6874'

¹⁰ Surface Location

UL or lot no.	Section	Township	Range	Lot Idn	Feet from the	North/South line	Feet from the	East/West line	County
F	2	25-N	7-W		1625'	NORTH	1285'	WEST	RIO ARRIBA

¹¹ Bottom Hole Location If Different From Surface

UL or lot no.	Section	Township	Range	Lot Idn	Feet from the	North/South line	Feet from the	East/West line	County
¹² Dedicated Acres DK-W/320.56			¹³ Joint or Infill		¹⁴ Consolidation Code		¹⁵ Order No.		

NO ALLOWABLE WILL BE ASSIGNED TO THIS COMPLETION UNTIL ALL INTERESTS HAVE BEEN CONSOLIDATED
OR A NON-STANDARD UNIT HAS BEEN APPROVED BY THE DIVISION

16

FD 3 1/4" B.L.M. BC 1954	S 87-38-10 E 2551.55' (M)	FD 3 1/4" B.L.M. BC 1954
LOT 2 LOT 4	LOT 1 LOT 3	LOT 2 LOT 1
1285'	LAT: 36.431468142° N. (NAD 27) LONG: 107.547713719° W. (NAD 27)	
LOT 3	LOT 4	
S 03-56-31 W 2630.47' (M)	2	
FD 3 1/4" B.L.M. BC 1965	LOT 6 LOT 5	
LOT 7	LOT 8	

¹⁷ OPERATOR CERTIFICATION

I hereby certify that the information contained herein
is true and complete to the best of my knowledge and
belief

Catherine Smith
Signature

Catherine Smith
Printed Name

Land Associate
Title

2-3-2005
Date

¹⁸ SURVEYOR CERTIFICATION

I hereby certify that the well location shown on this plat
was plotted from field notes of actual surveys made by
me or under my supervision, and that the same is true
and correct to the best of my belief.

JANUARY 17, 2005

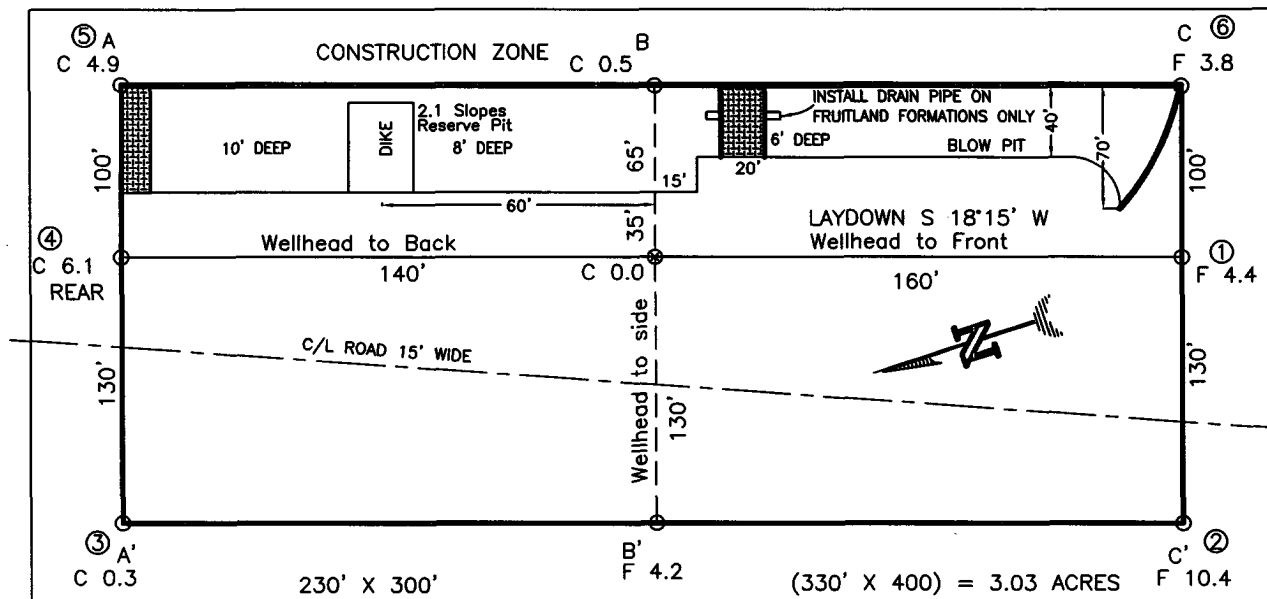
Date of Survey

Signature and Seal of Professional Surveyor:

14831

Certificate Number

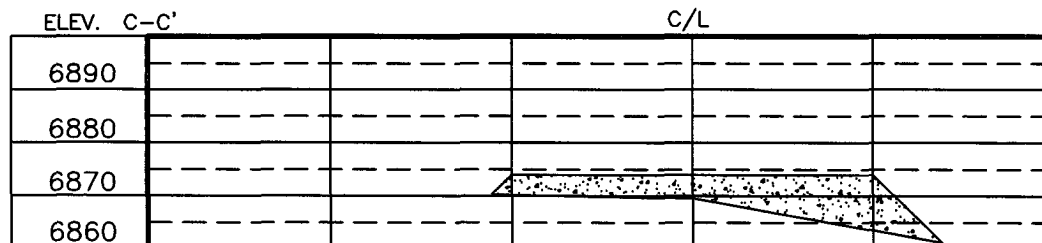
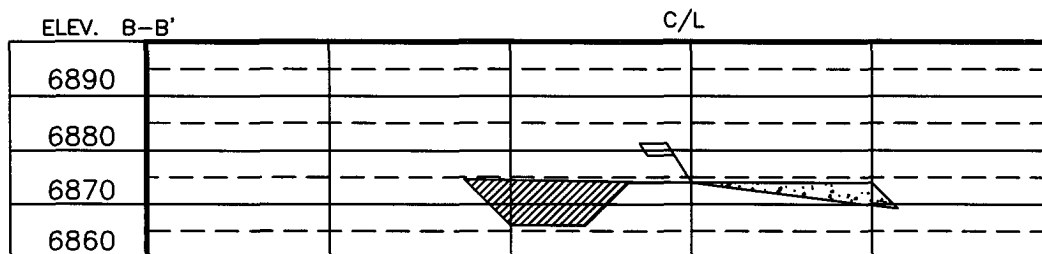
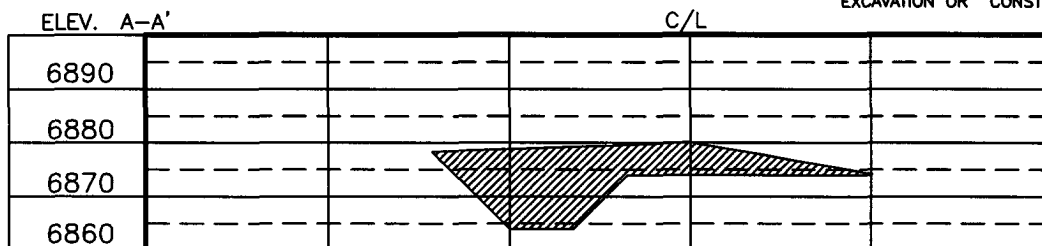
HUNTINGTON ENERGY, LLC
CANYON LARGO UNIT No. 473, 1625 FSL 1285 FWL
SECTION 2, T-25-N, R-7-W, N.M.P.M., RIO ARriba COUNTY, NEW MEXICO
GROUND ELEVATION: 6874, DATE: JANUARY 17, 2005



RESERVE PIT DIKE: TO BE 8' ABOVE DEEP SIDE (OVERFLOW - 3' WIDE AND 1' ABOVE SHALLOW SIDE).
 BLOW PIT: OVERFLOW PIPE HALFWAY BETWEEN TOP AND BOTTOM AND TO EXTEND OVER PLASTIC LINER AND INTO BLOW PIT.

NOTE:

DAGGETT ENTERPRISES, INC. IS NOT LIABLE FOR UNDERGROUND UTILITIES OR PIPELINES. NEW MEXICO ONE CALL TO BE NOTIFIED 48 HOURS PRIOR TO EXCAVATION OR CONSTRUCTION.



NOTE: CONTRACTOR SHOULD CALL ONE-CALL FOR LOCATION OF ANY MARKED OR UNMARKED BURIED PIPELINES OR CABLES ON WELL PAD AND OR ACCESS ROAD AT LEAST TWO (2) WORKING DAYS PRIOR TO CONSTRUCTION.

REVISION:	DATE:	REVISION BY:

Daggett Enterprises, Inc.
 Surveying and Oil Field Services
 P. O. Box 15068 • Farmington, NM 87401
 Phone (505) 328-1772 • Fax (505) 328-6019
 NEW MEXICO L.S. No. 14831
 DRAWN BY: A.G.
 ROW#: HGT026
 DATE: 01/20/05

OPERATIONS PLAN

Well Name: Canyon Largo Unit #473
Location: 1625' FNL, 1285' FWL, NW/4 Sec 2, T-25-N, R-7-W NMPM
Rio Arriba County, NM
Formation: Basin Dakota
Elevation: 6874' GL

<u>Formation Tops:</u>	<u>Top</u>	<u>Bottom</u>
Surface		2169'
Ojo Alamo	2169'	2339'
Kirkland	2339'	2562'
Fruitland	2562'	2838'
Pictured Cliffs	2838'	2914'
Lewis	2914'	3225'
Huerfano	3225'	4410'
Cliff House	4410'	4478'
Menefee	4478'	5092'
Point Lookout	5092'	5338'
Mancos	5338'	6281'
Gallup (Niobrara)	6281'	7044'
Greenhorn	7044'	7105'
Graneros	7105'	7149'
Dakota	7149'	7499'
Morrison	7499'	
TD	7600'	

Logging Program:

Open hole logs - None
Cased hole logs- RST - TD to 6200'; CBL/GR - TD to 6000'
Cores & DST's - none
Mud log - TD to 6000'

Mud Program:

<u>Interval</u>	<u>Type</u>	<u>Weight</u>	<u>Vis.</u>	<u>Fluid Loss</u>
0 - 320'	Spud	8.4-8.9	40-50	no control
320 - 7600'	LSND	8.4-9.0	40-60	8-12

Pit levels will be visually monitored to detect gain or loss of fluid control.

Casing Program:

<u>Hole Size</u>	<u>Depth Interval</u>	<u>Csg. Size</u>	<u>Wt.</u>	<u>Grade</u>
12 1/4"	0' - 320'	8 5/8"	24.0#	WC-50
7 7/8"	0' - 7600'	4 1/2"	11.6#	N-80

Tubing Program:

0' - 7600'	2 3/8"	4.7#	J-55
------------	--------	------	------

BOP Specifications, Wellhead and Tests:

Surface to TD -

11" 3000 psi minimum double gate BOP stack (Reference Figure #1). After nipple-up prior to drilling out surface casing, rams and casing will be tested to 600 psi for 30 minutes.

2" nominal, 3000 psi minimum choke manifold (Reference Figure #3).

Completion Operations:

6" 3000 psi double gate BOP stack (Reference Figure #2). After nipple-up prior to completion, pipe rams and casing top will be tested to 3000 psi for 15 minutes.

Surface to Total Depth:

2" nominal, 3000 psi minimum choke manifold (Reference Figure #3).

Wellhead:

8 5/8" x 4 1/2" x 1 1/2" x 1 1/2" x 3000 psi tree assembly.

General:

- Pipe rams will be actuated once each day and blind rams will be actuated once each trip to test proper functioning.
- An upper Kelly cock valve with handle available and drill string valves to fit each drill string will be available on the rig floors at all times.
- A BOP pit level drill will be conducted weekly for each drilling crew.
- All of the BOP tests and drills will be recorded in the daily drilling reports.
- Blind and pipe rams will be equipped with extension hand wheels.

Cementing:

8 5/8" surface casing –

Cement to surface w/336 sx Class "B" cement w/3% calcium chloride and 1/4#/sx cellophane flakes (396 cu. ft. of slurry, 200% excess to circulate to surface).

WOC 8 hr. prior to drilling out surface casing. Test casing to 600 psi for 30 minutes.

Saw tooth guide shoe on bottom. Bowspring centralizers will be run in accordance with Onshore Order #2.

Production Casing – 4 1/2"

Lead with 800 sx 9.5 ppg Litecrete Blend w/0.11% dispersant, 0.5% fluid loss. Tail w/407 sx Class "G" cement w/3% gel, 0.25 pps Celloflake, 5 pps Gilsonite, 0.25 pps fluid loss, 0.15% dispersant, 0.1% retardant, 0.1% antifoam (Slurry volume: 2603 cu. ft. Excess slurry 50%).

Alternate Two-stage cement job as follows:

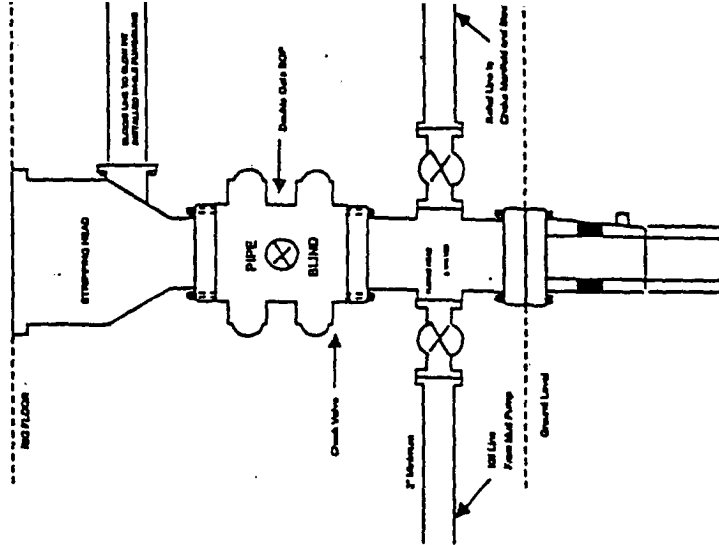
First Stage: Cement to circulate to stage tool @ 5066'. Lead with 700 sx Class "G" 50/50 poz (13#, 1.47 yd) w/3% gel, 0.25 pps Celloflake, 5 pps Gilsonite, 0.25 pps Fluid loss, 0.15% dispersant, 0.1% retarder. WOC 4 hours prior to pumping second stage. (Slurry volume: 1029 cu. ft. Excess slurry: 50%). DV Tool at 5000 ft.

Second Stage: Cement to circulate to surface. Cement with 670 sx Class "G" (12#, 2.9yd) TXI Liteweight cement w/2.5% sodium metasilicate, 2% calcium chloride, 10 pps Gilsonite, 0.5 pps Celloflake, 0.2% antifoam. WOC a minimum of 18 hours prior to cleanout. (Slurry volume: 1914 cu. ft. Excess slurry: 50%). Tail w/50 sx Class "B" w/1/4# Flocele (15.6#, 1.18 yd), (Slurry 59 cu. ft., Excess 50%).

Float shoe on bottom. Three centralizers run every other joint above shoe. Thirty-five centralizers - one every 4th joint to the base of the Ojo Alamo @ 2448'. Two turbolizing type centralizers – one below and one into the base of the Ojo Alamo @ 2448'. Standard centralizers thereafter every fourth joint up to the base of the surface pipe.

Note: If open hole logs are run, cement volumes will be based on 25% excess over caliper volumes.

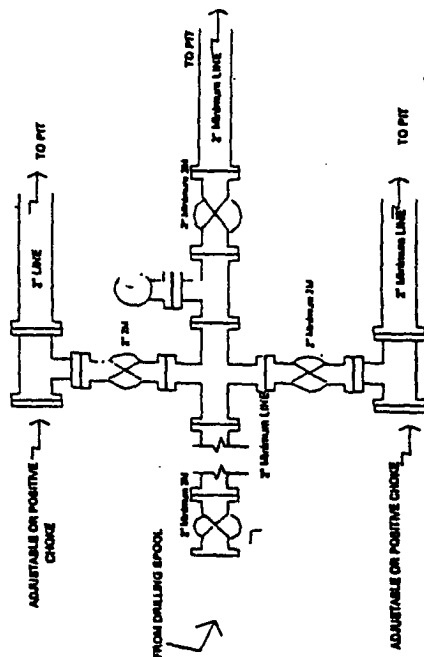
Completion/Workover Rig BOP Configuration 2,000 psi System



Minimum BOP Installation for all Completion/Workover Operations. 7-1/8" bore, 2000 psi minimum working pressure double gate BOP to be equipped with blind and pipe rams. A stripping head to be installed on top of the BOP. All BOP equipment is 2000 psi working pressure or greater excluding 600 psi stripping head.

Figure #2

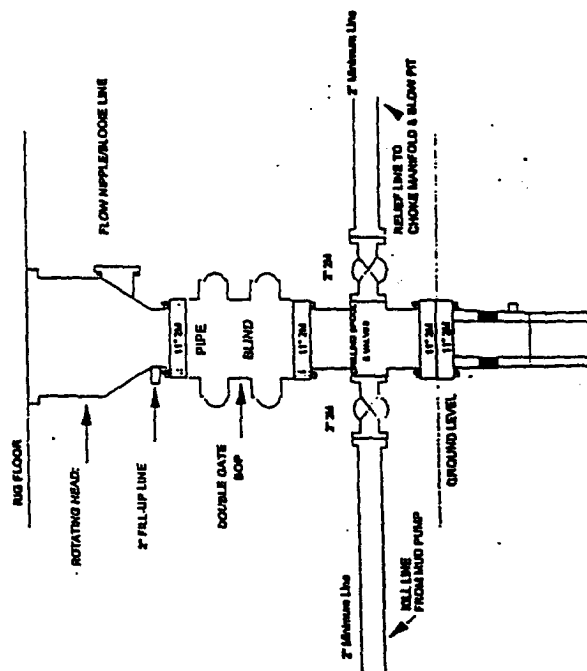
Drilling Rig Choke Manifold Configuration 2000 psi System



Choke manifold installation from Surface Casing Point to Total Depth. 2,000psi working pressure equipment with two chokes.

Figure #3

Drilling Rig 2000 psi System



BOP Installation from Surface Casing Point to Total Depth. 11" Bore 10" Nominal, 2000 psi working pressure double gate BOP to be equipped with blind rams and pipe rams. A 600 psi rotating head on top of ram preventers. All BOP equipment is 2,000 psi working pressure.

Figure #1

4-20-01

4-20-01