

UNITED STATES
DEPARTMENT OF THE INTERIOR
BUREAU OF LAND MANAGEMENT

APPLICATION FOR PERMIT TO DRILL OR REENTER

FORM APPROVED
OMB No. 1004-0136
Expires November 30, 2000

5. Lease Serial No. **NMSF078935**
~~NM 084078~~

6. If Indian, Allottee or Tribe Name

7. If Unit or CA Agreement, Name and No.

8. Lease Name and Well No.
Thompson C #6S

9. API Well No.
30045 32207

10. Field and Pool, or Exploratory
Basin Fruitland Coal

11. Sec., T., R., M., or Blk, and Survey or Area
B Sec. 10, T27N, R12W

12. County or Parish
San Juan

13. State
NM

1a. Type of Work: ☒ DRILL

☐ REENTER

b. Type of Well: ☐ Oil Well ☒ Gas Well ☐ Other

☒ Single Zone ☐ Multiple Zone

2. Name of Operator

ENERGEN RESOURCES CORPORATION

3A. Address

c/o Walsn Engineering, 7415 E. Main, Farmington, NM 87402

3b. Phone No. (include area code)

(505) 327-4892

4. Location of Well (Report location clearly and in accordance with any State requirements. *)

At surface **1270' FNL and 2125' FEL**

At proposed prod. Zone

14. Distance in miles and direction from nearest town or post office*

9 miles south of Farmington, NM

15. Distance from proposed*
location to nearest
property or lease line, ft.
(Also to nearest drig. unit line, if any)

510'

16. No. of Acres in lease

320+

17. Spacing Unit dedicated to this well

E/2 320 Acres

18. Distance from proposed location*
to nearest well, drilling, completed,
applied for, on this lease, ft.

500'

19. Proposed Depth
1720 +/-

20. BLM/BIA Bond No. on file

21. Elevations (Show whether DF, KDB, RT, GL, etc.)

5905' GL

22. Approximate date work will start*

June 15, 2004

23. Estimated duration

1 week

24. Attachments

The following, completed in accordance with the requirements of Onshore Oil and Gas Order No. 1, shall be attached to this form:

1. Well plat certified by a registered surveyor.

2. A Drilling Plan.

3. A Surface Use Plan (if the location is on National Forest System Lands, the
SUPO shall be filed with the appropriate Forest Service Office.

4. Bond to cover the operations unless covered by an existing bond on file (see
Item 20 above).

5. Operator certification.

6. Such other site specific information and/or plans as may be required by the
authorized office.

25. Signature

Paul C. Thompson

Name (Printed/Typed)

Paul C. Thompson, P.E.

Date

2/25/2004

Title

Agent

Approved by (Signature)

D. Mankiewicz
AFM

Name (Printed/Typed)

Date

6-29-05

Title

Office

FPO

Application approval does not warrant or certify that the applicant holds legal or equitable title to those rights in the subject lease which would entitle the applicant to conduct operations thereon.

Conditions of approval, if any, are attached.

Title 18 U.S.C. Section 1001 and Title 43 U.S.C. Section 1212, make it a crime for any person knowingly and willfully to make to any department or agency of the United States any false, fictitious or fraudulent statements or representations as to any matter within its jurisdiction.

*(Instructions on reverse)

HOLD C104 FOR NSL

DRILLING OPERATIONS AUTHORIZED ARE
SUBJECT TO COMPLIANCE WITH ATTACHED
"GENERAL REQUIREMENTS".

This action is subject to technical and
procedural review pursuant to 43 CFR 3165.3
and appeal pursuant to 43 CFR 3165.4

NMOCD

District I
PO Box 1980, Hobbs, NM 88241-1980

State of New Mexico
Energy, Minerals & Natural Resources Department

Form C-102
Revised February 21, 1994

District II
PO Drawer 00, Artesia, NM 88211-0719

OIL CONSERVATION DIVISION
PO Box 2088
Santa Fe, NM 87504-2088

Submit to Appropriate District Office
State Lease - 4 Copies
Fee Lease - 3 Copies

District III
1000 Rio Brazos Rd., Aztec, NM 87410

District IV
PO Box 2088, Santa Fe, NM 87504-2088

☐ AMENDED REPORT

WELL LOCATION AND ACREAGE DEDICATION PLAT

| | | | |
|-----------------------------|---|---------------------|------------------------------------|
| *API Number 30-045-32207 | | *Pool Code 71629 | *Pool Name BASIN FRUITLAND COAL |
| *Property Code 21418 | *Property Name THOMPSON C | | *Well Number 6S |
| *GRID No. 162928 | *Operator Name ENERGEN RESOURCES CORPORATION | | *Elevation 5905' |

¹⁰ Surface Location

| UL or lot no. | Section | Township | Range | Lot Idn | Feet from the | North/South line | Feet from the | East/West line | County |
|---------------|---------|----------|-------|---------|---------------|------------------|---------------|----------------|----------|
| B | 10 | 27N | 12W | | 1270 | NORTH | 2125 | EAST | SAN JUAN |

¹¹ Bottom Hole Location If Different From Surface

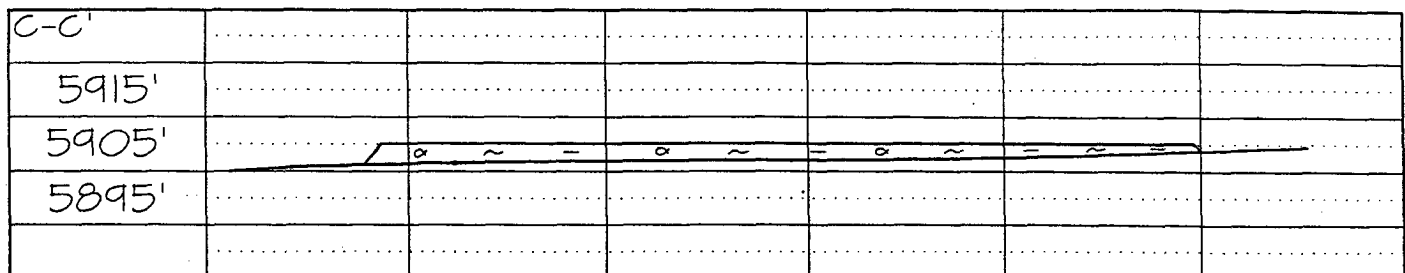
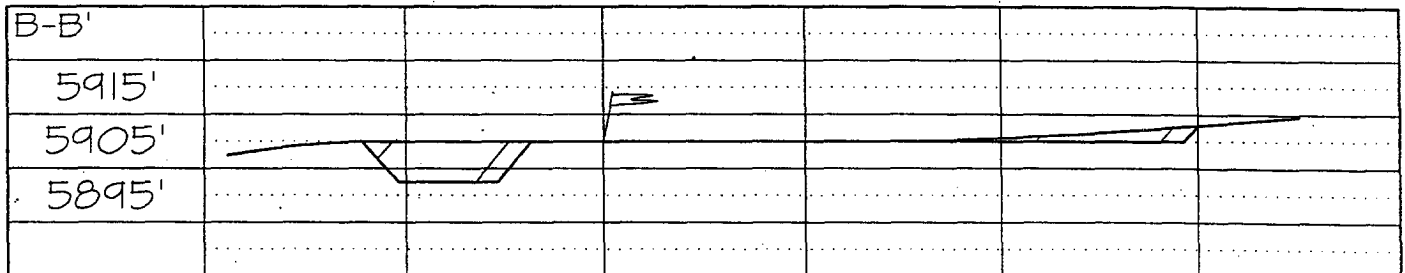
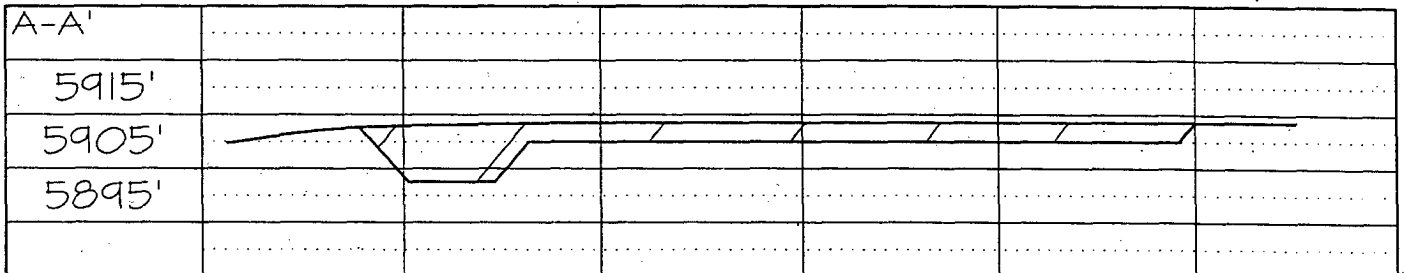
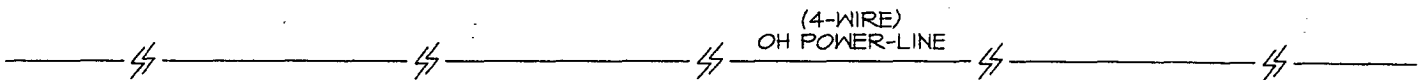
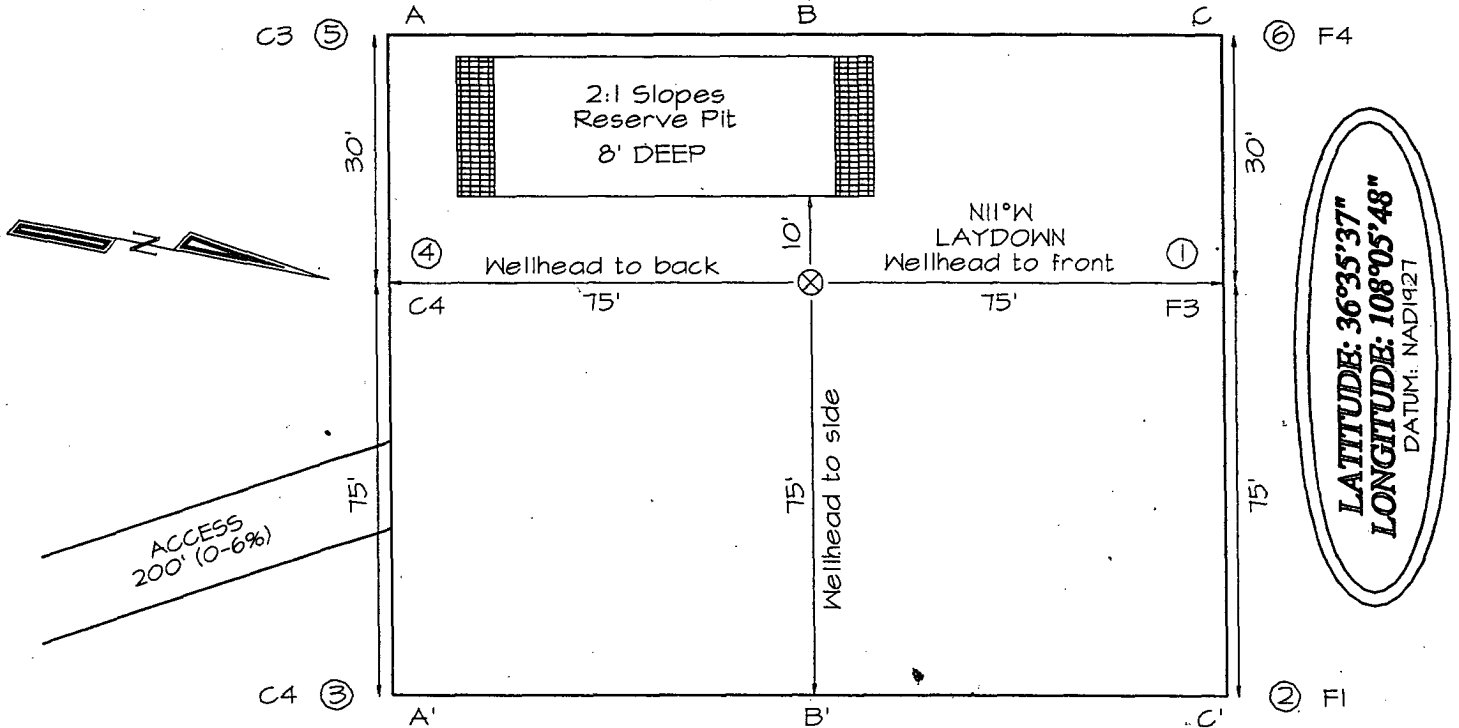
| UL or lot no. | Section | Township | Range | Lot Idn | Feet from the | North/South line | Feet from the | East/West line | County |
|--|---------|----------|-------|---------|------------------------------------|------------------|----------------------------------|----------------|-------------------------|
| | | | | | | | | | |
| ¹² Dedicated Acres 320.0 Acres - (E/2) | | | | | ¹³ Joint or Infill Y | | ¹⁴ Consolidation Code | | ¹⁵ Order No. |

NO ALLOWABLE WILL BE ASSIGNED TO THIS COMPLETION UNTIL ALL INTERESTS HAVE BEEN CONSOLIDATED OR A NON-STANDARD UNIT HAS BEEN APPROVED BY THE DIVISION

| | |
|---------------|---|
| <div>16</div> | <div>17 OPERATOR CERTIFICATION</div> <p>I hereby certify that the information contained herein is true and complete to the best of my knowledge and belief</p> <p><u>Paul C. Thompson</u> Signature</p> <p><u>Paul C. Thompson</u> Printed Name</p> <p><u>Agent</u> Title</p> <p><u>2/25/04</u> Date</p> |
| | <div>18 SURVEYOR CERTIFICATION</div> <p>I hereby certify that the well location shown on this plat was plotted from field notes of actual surveys made by me or under my supervision, and that the same is true and correct to the best of my belief.</p> <p>Date of Survey: JUNE 27, 2003</p> <p>Signature and Seal of Professional Surveyor</p> <div></div> <p><u>JASON C. EDWARDS</u> Certificate Number 15269</p> |

ENERGEN RESOURCES CORPORATION THOMPSON C #6S
1270' NAL & 2125' FEL, SECTION 10, T27N, R12W, NMPM
SAN JUAN COUNTY, NEW MEXICO GROUND ELEVATION: 5905'

PLAT #2



Note: Contractor should call One-Call for location of any marked or unmarked buried pipelines or cables on well pad and/or access road at least two (2) working days prior to construction

ENERGEN RESOURCES CORP.
OPERATIONS PLAN
Thompson C #6S

I. Location: 1270' FNL & 2125' FEL
Sec 10 T27N R12W
San Juan County, NM

Date: February 24, 2004

Field: Basin Fruitland Coal
Surface: Navajo Tribe / NAPI
Minerals: Federal NM 84078

Elev: GL 5905'

II. Geology: Surface formation _ Nacimiento

| <u>A. Formation Tops</u> | <u>Depths</u> |
|--------------------------|---------------|
| Ojo Alamo | 312' |
| Kirtland | 427' |
| Fruitland | 1212' |
| Pictured Cliffs | 1522' |
| Total Depth | 1725' |

Estimated depths of anticipated water, oil, gas, and other mineral bearing formations which are expected to be encountered:

Water and gas - 1212' and 1522'.

B. Logging Program: Induction/GR and density logs at TD.

C. No over pressured zones are expected in this well. No H₂S zones will be penetrated in this well. Max. BHP = 600 psig.

III. Drilling

A. Contractor:

B. Mud Program:

The surface hole will be drilled with a fresh water mud.

The production hole will be drilled with a fresh water polymer mud. The weighting material will be drill solids or if conditions dictate, barite. The maximum mud weight expected is 8.5 ppg.

C. Minimum Blowout Control Specifications:

Double ram type or annular type 2000 psi working pressure BOP with a rotating head. See the attached Exhibits #1 and #2 for details on the BOP equipment. All ram type preventers and related equipment will be hydraulically tested at nipple-up and after any use under pressure to 1000 psi.

C. Cont.

The blind rams will be hydraulically activated and checked for operational readiness each time pipe is pulled out of the hole. All checks of the BOP stack and equipment will be noted on the daily drilling report. The BOP equipment will include a kelly cock, floor safety valve, and choke manifold all rated to 2000 psi.

IV. Materials

A. Casing Program:

| Hole Size | Depth | Casing Size | Wt. & Grade |
|-----------|-------|-------------|-------------|
| 8-3/4" | 120' | 7" | 20# K-55 |
| 6-1/4" | 1725' | 4-1/2" | 10.5# K-55 |

B. Float Equipment:

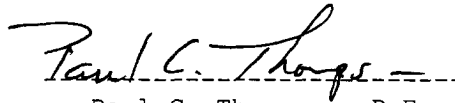
a) Surface Casing: None

b) Production Casing: 4-1/2" cement guide shoe and self fill insert float collar. Place float one joint above shoe. Five centralizers spaced every other joint above shoe and five turbolizers every fifth joint from the top of the well.

V. Cementing:

Surface casing: 7" - Use 50 sx (59 cu. ft.) of Cl "B" with ¼ #/sk celloflake and 2% CaCl₂ (Yield = 1.18 cu. ft./sk; slurry weight = 15.6 PPG). 100% excess to circulate cement to surface. WOC 12 hours. Pressure test surface casing to 600 psi for 30 min.

Production Casing: 4-1/2" - Before cementing circulate hole with at least 1-1/2 hole volumes of mud. Precede cement with 30 bbls of fresh water. **Lead** with 115 sx (237 cu.ft) of Cl "B" with 2% metasilicate and ¼ #/sk celloflake. (Yield = 2.06 cu.ft./sk; slurry weight = 12.5 PPG). **Tail** with 100 sx (118 cu.ft.) of Cl "B" with ¼ #/sk celloflake (Yield = 1.18 cu. ft./sk; slurry weight = 15.6 PPG). Total cement volume is 355 cu.ft. (100% excess to circulate cement to surface).


Paul C. Thompson, P.E.

Well Control Equipment Schematic for 2M Service

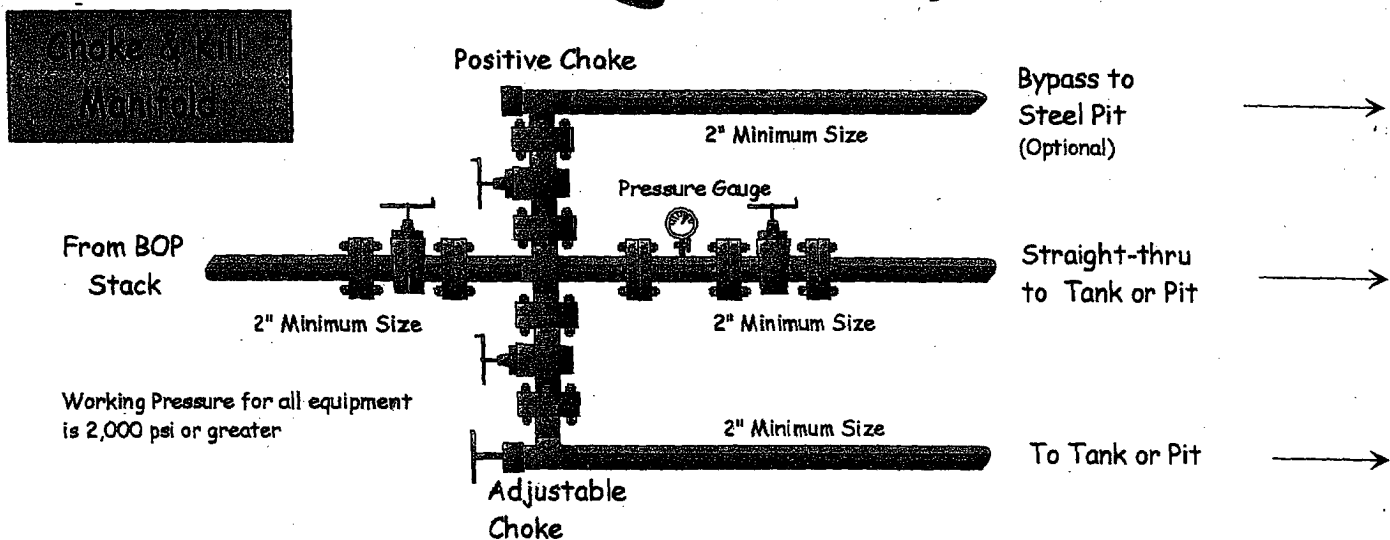
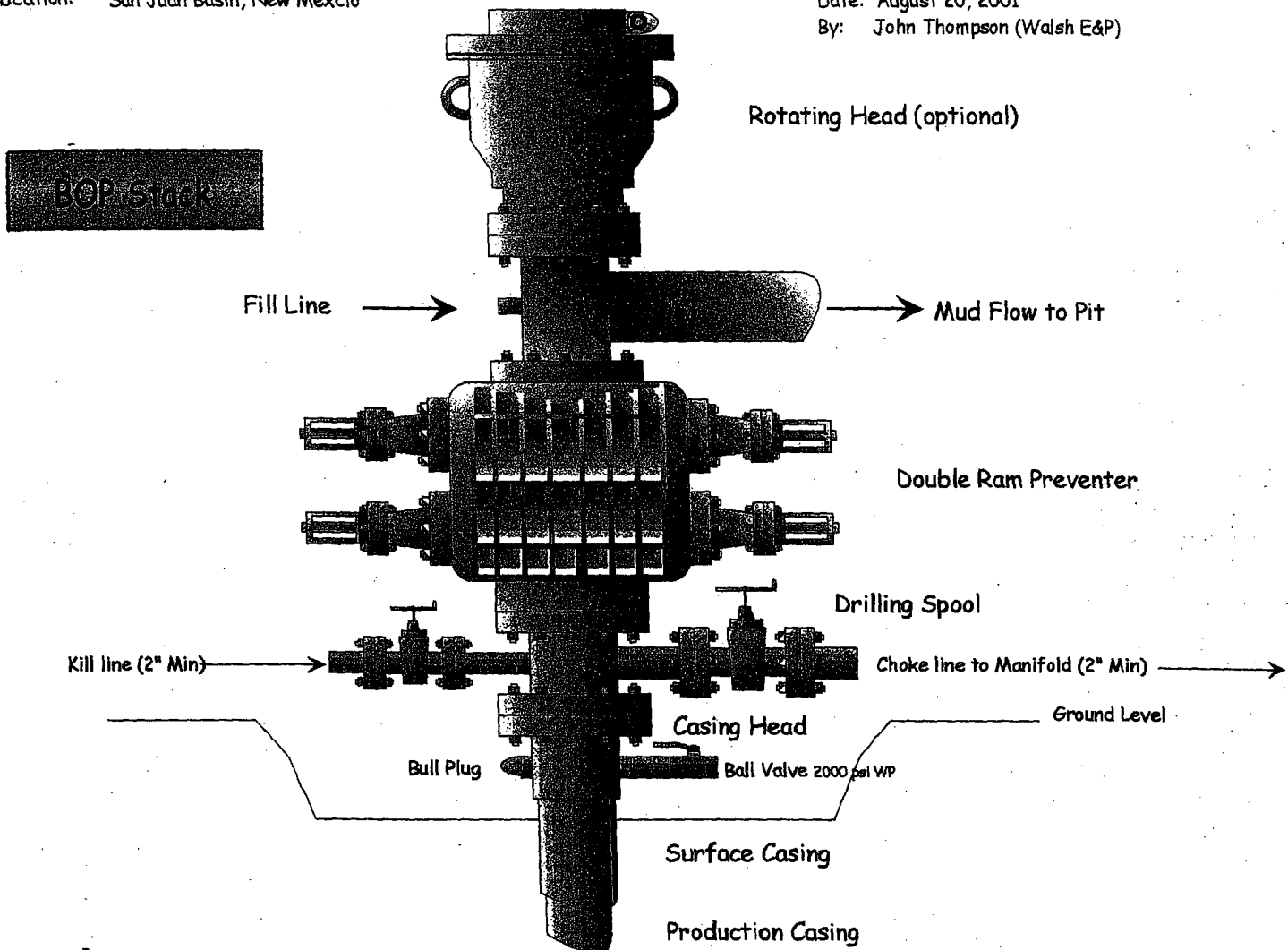
Attachment to Drilling Technical Program

Exhibit #1 Typical BOP setup

Location: San Juan Basin, New Mexico

Date: August 20, 2001

By: John Thompson (Walsh E&P)



ANNULAR PREVENTER

