

## District I

1625 N. French Dr., Hobbs, NM 88240

## District II

1301 W. Grand Avenue, Artesia, NM 88210

## District III

1000 Rio Brazos Road, Aztec, NM 87410

## District IV

1220 S. St. Francis Dr., Santa Fe, NM 87505

State of New Mexico  
Energy Minerals and Natural Resources

Form C-101

May 27, 2004

## Oil Conservation Division

1220 South St. Francis Dr.

Santa Fe, NM 87505

Submit to appropriate District Office

☐ AMENDED REPORT

## APPLICATION FOR PERMIT TO DRILL, RE-ENTER, DEEPEN, PLUGBACK, OR ADD A ZONE

<sup>1</sup> Operator Name and Address BLUE DOLPHIN PRODUCTION, LLC 609 S. KELLY, SUITE F1 EDMOND, OK 73003 405-285-5388		<sup>2</sup> OGRID Number 256829
<sup>3</sup> Property Code 34245	<sup>4</sup> Property Name EL POSO	<sup>5</sup> API Number 039-29587
<sup>9</sup> Proposed Pool 1 WILDCAT—GREENHORN		<sup>10</sup> Proposed Pool 2

<sup>7</sup> Surface Location

UL or lot no.	Section	Township	Range	Lot Idn	Feet from the	North/South line	Feet from the	East/West line	County
E	26	28N	1E		2130'	NORTH	620'	WEST	RIO ARRIBA

<sup>8</sup> Proposed Bottom Hole Location If Different From Surface

UL or lot no.	Section	Township	Range	Lot Idn	Feet from the	North/South line	Feet from the	East/West line	County

## Additional Well Information

<sup>11</sup> Work Type Code N	<sup>12</sup> Well Type Code O	<sup>13</sup> Cable/Rotary R	<sup>14</sup> Lease Type Code P	<sup>15</sup> Ground Level Elevation 7208'
<sup>16</sup> Multiple N	<sup>17</sup> Proposed Depth 1950'	<sup>18</sup> Formation GREENHORN	<sup>19</sup> Contractor CHIHUAHUA DRLG. SERVICE	<sup>20</sup> Spud Date 8-5-05
Depth to Groundwater >1000'		Distance from nearest fresh water well >1000'		Distance from nearest surface water >1000'
Pit: Liner: Synthetic XX 20 mils thick Clay <input type="checkbox"/> Pit Volume: 160 bbls Drilling Method: ROTARY RIG				
Closed-Loop System <input type="checkbox"/> Fresh Water X Brine <input type="checkbox"/> Diesel/Oil-based <input type="checkbox"/> Gas/Air <input type="checkbox"/>				

<sup>21</sup> Proposed Casing and Cement Program

Hole Size	Casing Size	Casing weight/foot	Setting Depth	Sacks of Cement	Estimated TOC
10-3/4"	8-5/8"	32.0	165'	110	SURE
7-7/8"	5-1/2"	15.5	1950'	320	SURE

- 22 Describe the proposed program. If this application is to DEEPEN or PLUG BACK, give the data on the present productive zone and proposed new productive zone. Describe the blowout prevention program, if any. Use additional sheets if necessary.
- 23 SURFACE HOLE TO BE DRILLED w/ FRESH WATER. SURF CSG CMT BASED ON 100% EXCESS OVER GAUGE HOLE. CMT 1.18 CU.FT/SX.
- 24 INSTALL RENGEM 2000# 1000# TEST ANNULAR BOP.
- 25 7-7/8" HOLE TO BE DRILLED w/ FRESH WATER MUD & GEL TO BE MIXED TO MAINTAIN 9.1 PPG & 70 VIS.
- 26 OPEN HOLE LOGS WILL BE RUN TO EVALUATE WELL. IES—GR—SP—CAL—COMP DENSITY—COMP NEUTRON
- 27 LONG STRING CMT VOL BASED ON 1250' LEAD SLURRY YIELD 2.24 CU.FT/SX AND 700' TAIL SLURRY YIELD 1.18 CU.FT/SX.
- 28 FINAL CMT VOLUME TO BE CALCULATED USING 30% EXCESS OVER CALIPER.
- 29
- 30

23 I hereby certify that the information given above is true and complete to the best of my knowledge and belief. I further certify that the drilling pit will be constructed according to NMOCD guidelines ☒, a general permit ☐, or an (attached) alternative OCD-approved plan ☐.

Printed name: BRADLEY W. SALZMAN

Title: CONSULTANT

E-mail Address: brads@titusconsulting.net

Date: 7-05-05

Phone: 505-486-1701

## OIL CONSERVATION DIVISION

Approved by:

Title: DEPUTY OIL &amp; GAS INSPECTOR, DIST. 4

Approval Date: JUL - 6 2005

Expiration Date: JUL - 6 2006

Conditions of Approval Attached ☐

State of New Mexico  
Energy, Minerals & Mining Resources Department  
OIL CONSERVATION DIVISION  
2040 South Pacheco  
Santa Fe, NM 87505

Form C - 102

☐ AMENDED REPORT

WELL LOCATION AND ACREAGE DEDICATION PLAT

APA Number <b>30-039-29587</b>	Pool Code <b>97466</b>	Pool Name <b>WC 28N1E E1POSO; Greenham</b>
Property Code <b>34245</b>	Property Name <b>El Poso</b>	Well Number <b>7</b>
OGRD No. <b>226829</b>	Operator Name <b>BLUE DOLPHIN PRODUCTION, LLC</b>	Elevation <b>7208'</b>

Surface Location									
UL or Lot	Sec.	Twp.	Rge.	Lot Ltn.	Feet from >	North/South	Feet from >	East/West	County
E	26	28 N.	1 E.		2130'	NORTH	620'	WEST	Rio Arriba

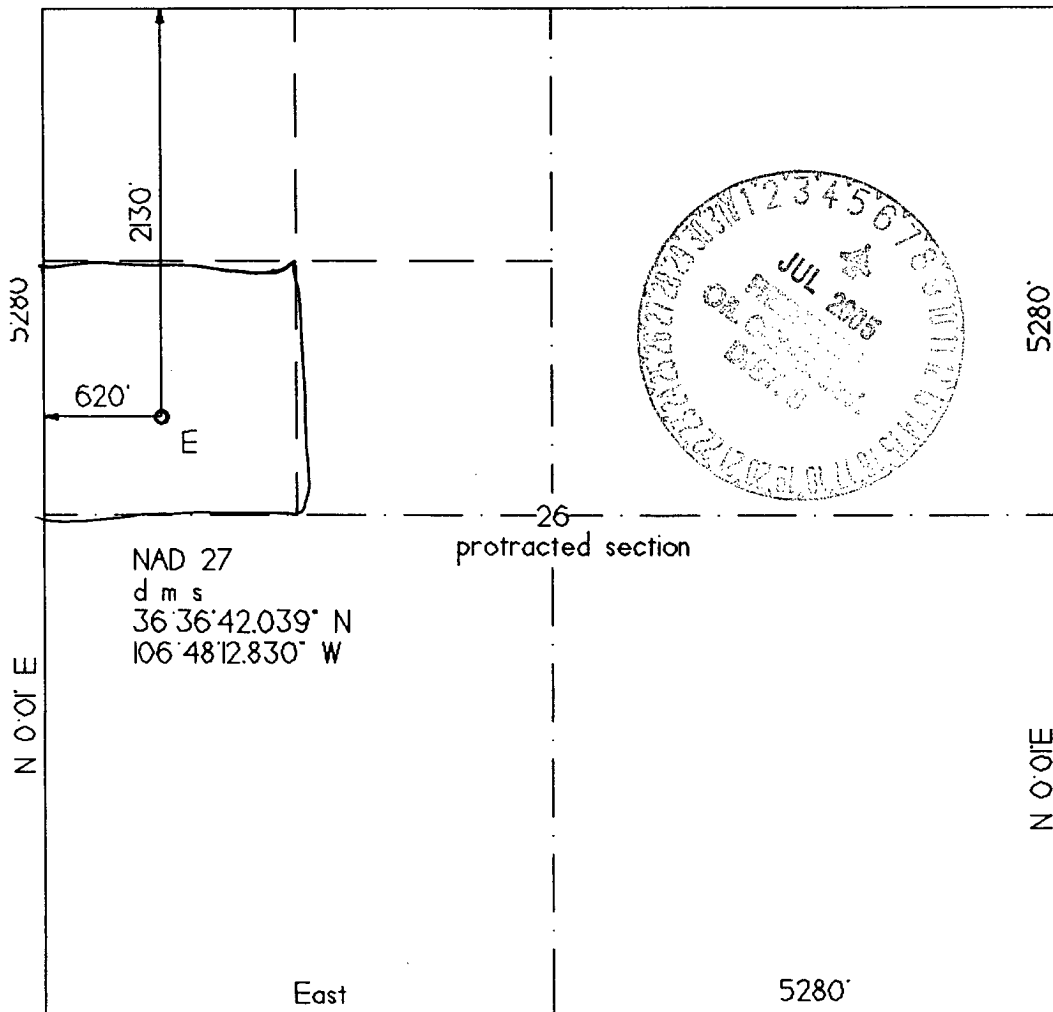
Bottom Hole Location If Different From Surface									
UL or Lot	Sec.	Twp.	Rge.	Lot Ltn.	Feet from >	North/South	Feet from >	East/West	County

Dedication <b>40</b>	Joint ?	Consolidation	Order No.
-------------------------	---------	---------------	-----------

NO ALLOWABLE WILL ASSIGNED TO THIS COMPLETION UNTIL ALL INTERESTS HAVE BEEN CONSOLIDATED  
OR A NON-STANDARD UNIT HAS BEEN APPROVED BY THE DIVISION

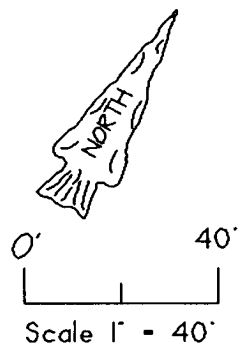
East

5280'



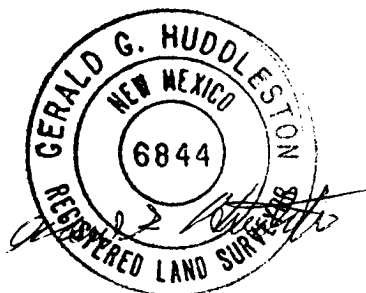
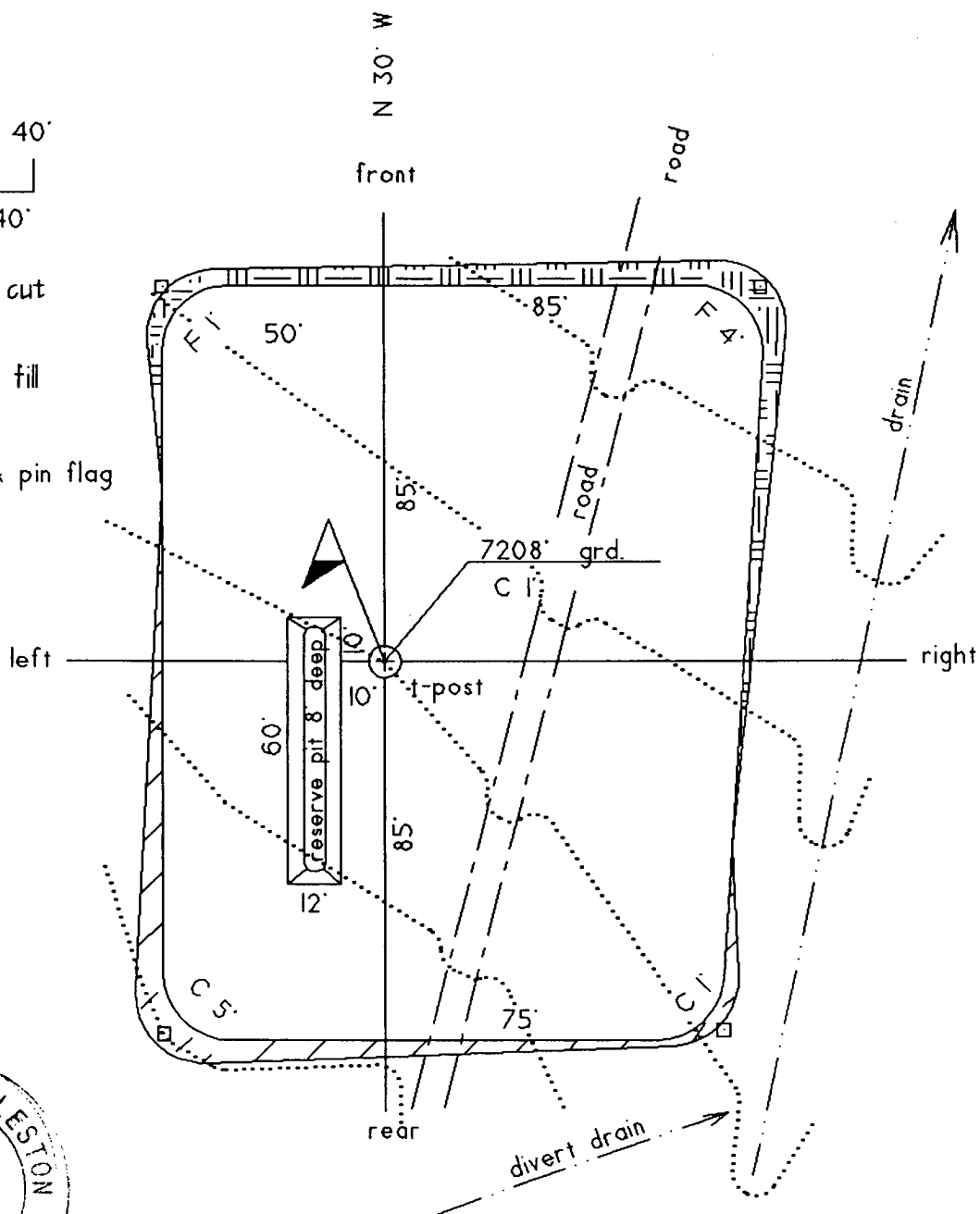
<b>OPERATOR CERTIFICATION</b> I hereby certify that the information contained herein is true and complete to the best of my knowledge and belief.	
Signature	<i>Bradley W. Salzman</i>
Printed Name	<b>BRADLEY W. SALZMAN</b>
Title	<b>CONSULTANT</b>
Date	<b>7-1-05</b>
<b>SURVEYOR CERTIFICATION</b> I hereby certify that the well location on this plat was plotted from field notes of actual surveys made by me or under my supervision, and that the same is true and correct to the best of my belief. Date of Survey <b>04/14/05</b>	
Signature and Seal of Professional Surveyor 	

well pad and section

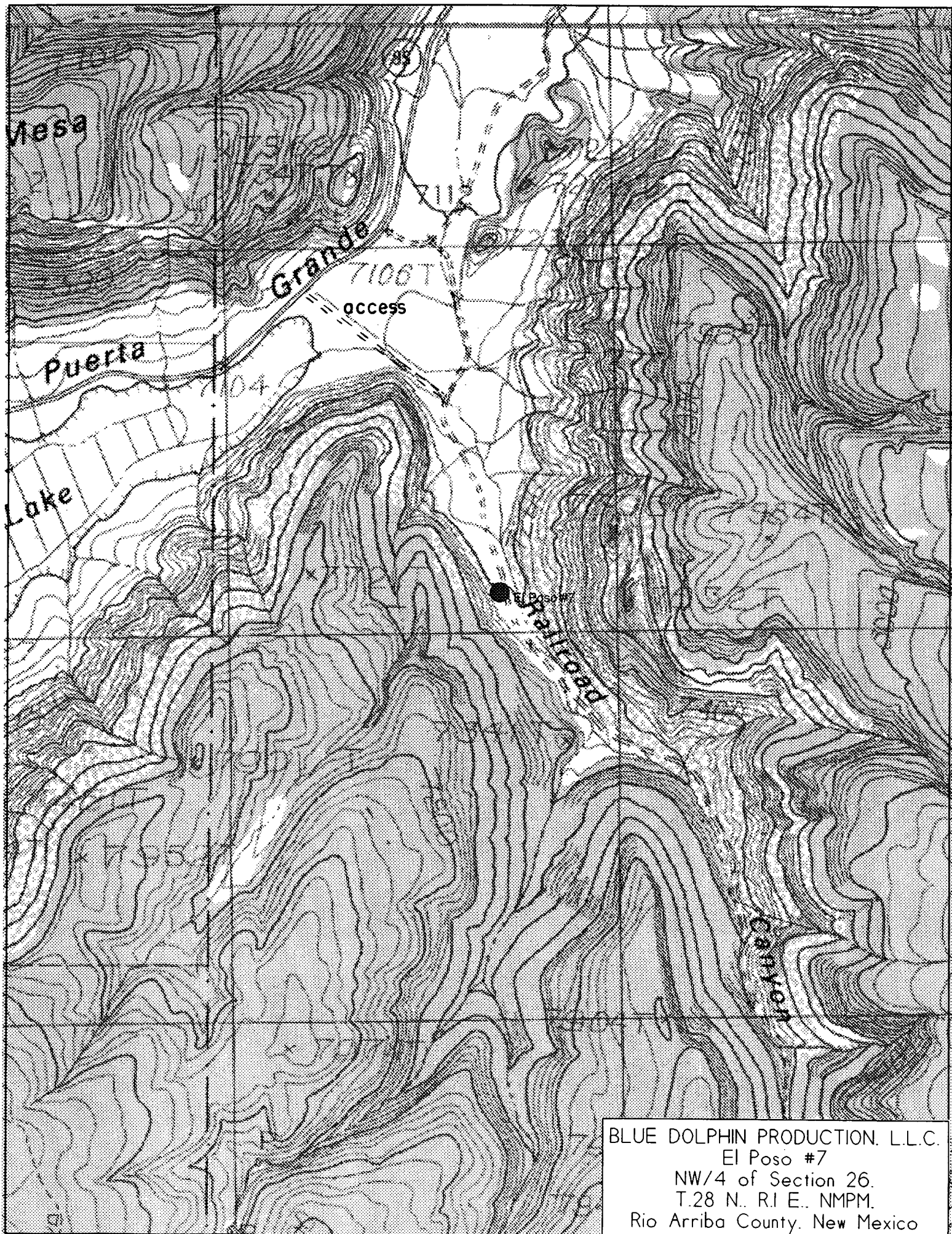


cut  
fill

- set stake & pin flag



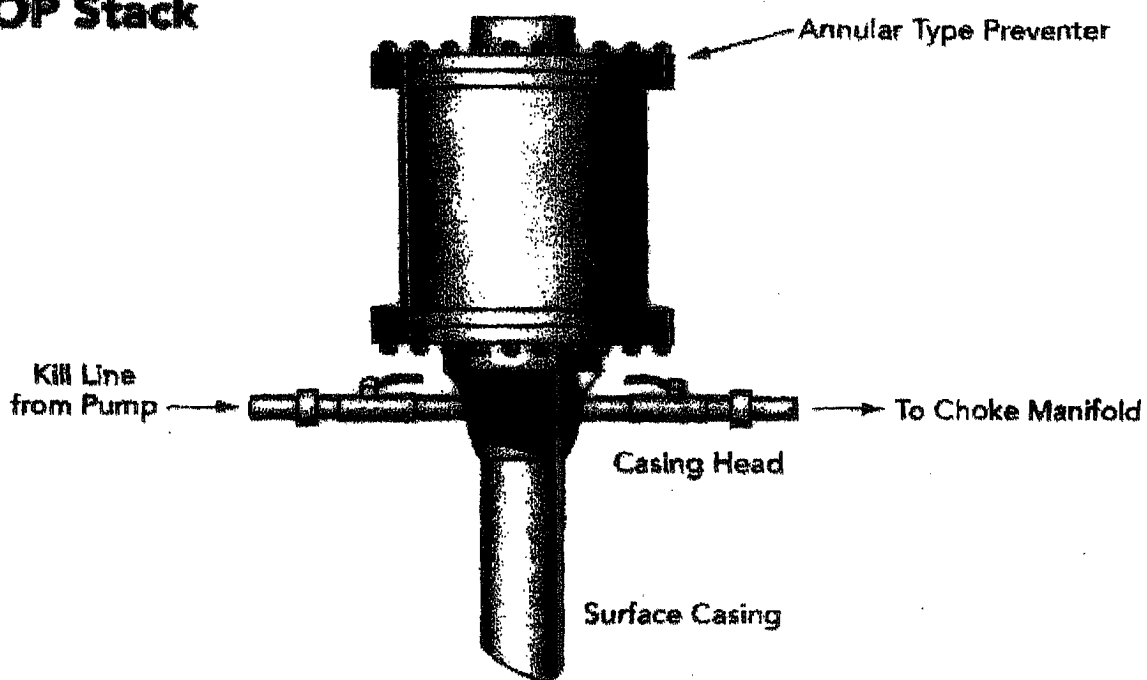
section



BLUE DOLPHIN PRODUCTION. L.L.C.  
El Poso #7  
NW/4 of Section 26.  
T.28 N. R.1 E.. NMPM.  
Rio Arriba County. New Mexico

## Well Control Equipment Schematic for 2M Service

### BOP Stack



### Choke & Kill Manifold

