

UNITED STATES
DEPARTMENT OF THE INTERIOR
BUREAU OF LAND MANAGEMENT

FORM APPROVED
Budget Bureau No. 1004-0135
Expires: March 31, 1993

SUNDRY NOTICES AND REPORTS ON WELLS

Do not use this form for proposals to drill or to deepen or reentry to a different reservoir.

Use "APPLICATION FOR PERMIT..." for such proposals

SUBMIT IN TRIPLICATE

1. Type of Well

☒ Oil ☐ Gas ☐ Other

2. Name of Operator

Roddy Production Company, Inc.

3. Address and Telephone No.

P.O. Box 2221, Farmington NM 87499 (505) 325-5750

4. Location of Well (Footage, Sec., T., R., M., or Survey Description)

Surface location; 990' FSL x 990' FEL, Section 9, T23N, R3W

5. Lease Designation and Serial No.
Contract 412

6. If Indian, Allottee or Tribe Name
Jicarilla Apache

7. If Unit or CA, Agreement Designation
Chacon Jicarilla Apache 'D'

8. Well Name and No.

Chacon Jicarilla Apache 'D' No. 4

9. API Well No.

30-039-21258

10. Field and Pool, or Exploratory Area
West Lindrith Gallup-Dakota

11. County or Parish, State
Rio Arriba County, New Mexico

12. CHECK APPROPRIATE BOX(es) TO INDICATE NATURE OF NOTICE, REPORT, OR OTHER DATA

TYPE OF SUBMISSION

☒ Notice of Intent

☐ Subsequent Report

☐ Final Abandonment Notice

TYPE OF ACTION

☐ Abandonment

☒ Recompletion

☐ Plugging Back

☐ Casing Repair

☐ Altering Casing

☐ Other

☐ Change of Plans

☐ New Construction

☐ Non-Routine Fracturing

☐ Water Shut-Off

☐ Conversion to Injection

☐ Dispose Water

(Note: Report results of multiple completion on Well Completion or Recompletion Report and Log form.)

13. Describe Proposed or Completed Operations (Clearly state all pertinent details, and give pertinent dates, including estimated date of starting any proposed work. If well is directionally drilled, give subsurface locations and measured and true vertical depth for all markers and zones pertinent to this work.)*

Roddy Production Company, Inc., intends to place cement on the outside of the 4 1/2" casing from approximately 5000' to 3307' in order to run a cased hole GSL log and evaluate the Chacra for a recompletion attempt. The workover procedure and well bore diagram are attached. The estimated start date is 7/25/05.

CONDITIONS OF APPROVAL

Adhere to previously issued stipulations.

SEE ATTACHED FOR
CONDITIONS OF APPROVAL

14. I hereby certify that the foregoing is true and correct

Signed Robert R. Griffe
Robert R. Griffe

Title Operations Manager

Date: 7/15/05

(This space for Federal or State office use)

Approved by Jim Lalo

Title Petr. Eng.

Date 7/18/05

Conditions of approval, if any:

Title 18 U.S.C. Section 1001, makes it a crime for any person knowingly and willfully to make to any department or agency of the United States any false, fictitious or fraudulent statements or representations as to any matter within its jurisdiction.

*See Instruction on Reverse Side

NMOCD

RODDY PRODUCTION COMPANY, INC.

P.O. BOX 2221 • Farmington, New Mexico 87499
Telephone: (505) 325-5750 • Fax (505) 326-6814

**Chacon Jicarilla Apache 'D' No. 4
Chacra Formation Evaluation Procedure**

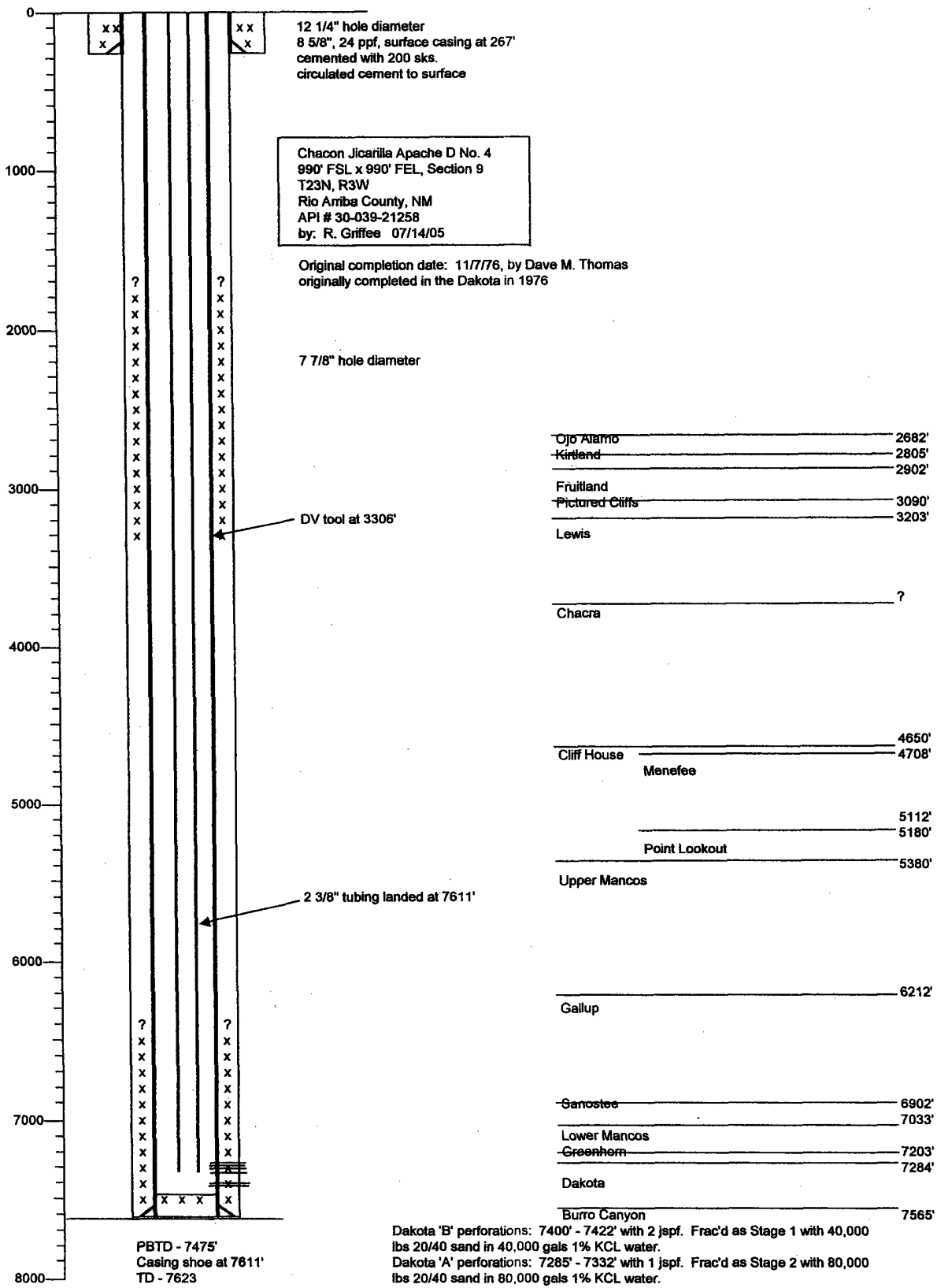
Prepared by: R. Griffie, Operations Manager
7/14/05

See Wellbore Diagram for details.

1. Prepare location. Dig small earthen pit and line with plastic. Check rig anchors.
2. MIRU well servicing rig.
3. ND well head, NU BOPE.
4. TOH with 2 3/8" tubing, SLM. Visually inspect string. Replace tubing as necessary.
5. PU bit and clean out to PBTD of 7574' with air/mist. TOH.
6. Round trip casing scraper to PBTD of 7574'.
7. Set composite bridge plug at 7200', above Dakota perforations. Use wireline-set or tubing-set bridge plug, depending on logistics.
8. TIH open ended to 7200'.
9. Load casing with 3% KCL water. Pressure test casing to 500 psi, under pipe rams.
10. TOH.
11. RU Blue Jet. Run CBL from 7200' to 500' above the TOC on the 2nd stage primary cement job.
12. Based on CBL log from step 9, design squeeze cementing job(s) to place cement on the outside of the 4 1/2" casing from 5000' +/- to the bottom of the 2nd stage primary cement job at approximately 3306' (reported DV tool depth).
13. WOC as directed by pilot tests.
14. Run GSL log from 5000' to 2800'.
15. Evaluate GSL log for Chacra re-completion potential.

After evaluating the GSL log, if the Chacra looks productive, new perforations and a frac procedure will be forthcoming. It is likely the procedure will call for 100,000 lbs 16/30 brady sand in 70Q ClearFRAC LT N2 foam.

Elevations: 7283' GL, 7297' RKB



Bureau of Land Management Conditions of Approval:

- 1) If cement squeeze work is necessary, contact Matt Halbert of the BLM Farmington Field Office @ (505) 599-6350.**
- 2) If this well is located in a Specially Designated Area (SDA), compliance with the appropriate seasonal closure requirements will be necessary.**
- 3) Pits must be lined with an impervious material at least 12 mils thick. The pit must be fenced on three (3) sides during workover operations and on the 4th side after the rig moves off location. Pits must be closed within 90 days of completion of the workover operations. Prior to closing the pit the liner must be cut off at mud level.**