

UNITED STATES
DEPARTMENT OF THE INTERIOR
BUREAU OF LAND MANAGEMENT

APPLICATION FOR PERMIT TO DRILL, DEEPEN, OR PLUG BACK

1a. Type of Work <u>Deepen</u>	5. Lease Number SF-078207 Unit Reporting Number
1b. Type of Well GAS	6. If Indian, All. or Tribe
2. Operator BURLINGTON RESOURCES Oil & Gas Company LP	7. Unit Agreement Name
3. Address & Phone No. of Operator PO Box 4289, Farmington, NM 87499 (505) 326-9700	8. Farm or Lease Name KING 9. Well Number #1B
4. Location of Well 1700' FNL, 1980' FEL Latitude 36°48.0'N, Longitude 107°52.1'W	10. Field, Pool, Wildcat BLANCO MV/BASIN DK 11. Sec., Twn, Rge, Mer. (NMPM) UNIT G, Sec. 22, T30N, R10W API # 30-045-29861
14. Distance in Miles from Nearest Town 5 MILES TO AZTEC	12. County SAN JUAN 13. State NM
15. Distance from Proposed Location to Nearest Property or Lease Line 1700'	17. Acres Assigned to Well 323.22 E/2
16. Acres in Lease	
CONDITIONS OF APPROVAL Adhere to previously issued stipulations.	
18. Distance from Proposed Location to Nearest Well, Drig, Compl, or Applied for on this Lease 1300'	
19. Proposed Depth 7440'	20. Rotary or Cable Tools Rotary
21. Elevations (DF, FT, GR, Etc.) 6276' GL	22. Approx. Date Work will Start
23. Proposed Casing and Cementing Program See Operations Plan attached	
24. Authorized by: <u><i>Richard Thompson</i></u> Regulatory Associate	5/17/05 Date

PERMIT NO.

APPROVED BY

APPROVAL DATE

TITLE

DATE

Archaeological Report attached

Threatened and Endangered Species Report attached

NOTE: This format is issued in lieu of U.S. BLM Form 3160-3

Title 18 U.S.C. Section 1001, makes it a crime for any person knowingly and willfully to make to any department or agency of the United States any false, fictitious or fraudulent statements or presentations as to any matter within its jurisdiction.

NMOC

District I
1625 N. French Dr., Hobbs, NM 88240
District II
1301 W. Grand Ave., Artesia, NM 88210
District III
1000 Rio Brazos Rd., Aztec, NM 87410
District IV
1220 S. St Francis Dr., Santa Fe, NM
87505

State of New Mexico
Energy, Minerals and Natural Resources
Oil Conservation Division
1220 S. St Francis Dr.
Santa Fe, NM 87505

Form C-102
Permit 11328

WELL LOCATION AND ACREAGE DEDICATION PLAT

API Number 30-045-29861	Pool Name BASIN DAKOTA (PRORATED GAS)	Pool Code 71599
Property Code 7224	Property Name KING	Well No. 001B
OGRID No. 14538	Operator Name BURLINGTON RESOURCES OIL & GAS COMPANY LP	Elevation 6276

Surface And Bottom Hole Location

UL or Lot G	Section 22	Township 30N	Range 10W	Lot Idn	Feet From 1700	N/S Line N	Feet From 1980	E/W Line E	County San Juan
Dedicated Acres 323.22		Joint or Infill		Consolidation Code		Order No.			

		■	

OPERATOR CERTIFICATION

I hereby certify that the information contained herein is true and complete to the best of my knowledge and belief.

Electronically Signed By: *Melanie Thompson*
Title: *Regulatory Associate II*
Date: *5/18/05*

SURVEYOR CERTIFICATION

I hereby certify that the well location shown on this plat was plotted from field notes of actual surveys made by me or under my supervision, and that the same is true and correct to the best of my belief.

Surveyed By: Neale Edwards
Date of Survey: 01/08/1999
Certificate Number: 6857

OPERATIONS PLAN FOR KING #1B

Well: KING #1B
Location: Unit G, Section 22, T30N, R10W; 1700' FNL, 1980' FEL
San Juan County, NM
Latitude 36° 48.0' Longitude 107° 52.1'

Formation: Blanco Mesaverde and Basin Dakota

<u>Formation Tops:</u>	<u>Top</u>	<u>Bottom</u>	<u>Contents</u>
Surface	San Jose		---
Ojo Alamo	1615'	1697'	aquifer
Kirtland	1697'	2645'	gas
Fruitland	2645'	2900'	gas
Pictured Cliffs	2900'	3025'	gas
Lewis	3025'	3618'	gas
Huerfano Bentonite	3618'	3879'	gas
Chacra	3879'	4421'	gas
Upper Cliff House	4421'	4493'	gas
Massive Cliff House	4493'	4678'	gas
Menefee	4678'	5152'	gas
Massive Point Lookout	5152'	5496'	gas
Mancos	5496'	6404'	gas
Gallup	6404'	7129'	gas
Greenhorn	7129'	7184'	gas
Graneros	7184'	7237'	gas
Two Wells	7237'		gas
Total Depth	7440'		

Logging program:
Cased hole - CBL-CCL-GR - TD to 6000'

<u>Interval</u>	<u>Type</u>	<u>Weight</u>	<u>Vis.</u>	<u>Fluid Loss</u>
5546' - 7440'	Air/Nitrogen	n/a	n/a	n/a

<u>Hole Size</u>	<u>Depth Interval</u>	<u>Csg.Size</u>	<u>Wt.</u>	<u>Grade</u>
3-7/8"	~5600' - 7440'	3-1/2" Flush	9.3#/'	L-80

<u>Tubing Program:</u>	<u>Tbg.Size</u>	<u>Wt.</u>	<u>Grade</u>
0' - total depth	2-1/16"	3.25#	J-55

Operations:

It is intended to deepen the subject well to the Dakota formation by the following procedure:

1. MIRU completion rig. TOOH with tubing.
2. Set retrievable bridge plug at +/- 4712'.
3. Pressure test casing to 1000 psi for 15 minutes. TOOH with bridge plug.
4. Lay in acid soluble cement across entire Mesaverde interval. WOC.
5. Drill out cement. Test casing to 500 psi for 15 minutes. Repeat cement work until pressure test holds.
6. Drill out shoe. Drill Dakota formation to approximately 7440' with mud logger to call final total depth. TOOH.
7. TIH with 3-1/2" flush joint pipe and set at total depth.
8. Cement with 28 sxs of type III cement (1.39 yield, 14.5 ppg). WOC. Run CBL. TOC @ 6037'.
9. Perforate and fracture stimulate the Dakota formation. Flow back Dakota.
10. Set composite plug 50' above top Dakota perforation.
11. Chemical cut 3-1/2" casing at +/- 5600'.
12. Acidize Mesaverde interval to restore production.

13. Drill out composite plug above the Dakota. Clean out to PBTD.
14. Land 2-1/16" IJ tubing.
15. RDMO rig. Return well to production as a commingled MV/DK producer.

BOP Specifications, Wellhead and Tests:

Surface to Total Depth:

2" nominal, 2000 psi minimum choke manifold (Reference Figure #3).

Completion Operations:

7 1/16" 2000 psi double gate BOP stack (Reference Figure #4). After nipple-up prior to completion, pipe rams, casing and liner top will be tested to 2000 psi for 15 minutes.

Wellhead:

9 5/8" x 7" x 4 1/2" x 2 1/16" x 2000 psi tree assembly.

General Information:

- Pipe rams will be actuated once each day and blind rams will be actuated once each trip to test proper functioning.
- An upper kelly cock valve with handle available and drill string valves to fit each drill string will be available on the rig floors at all times.
- All BOP tests and drills will be recorded in daily drilling reports.
- Blind and pipe rams will be equipped with hand wheels.

Cementing:

3-1/2" Production Liner

Cement to cover minimum of 1200' above the Dakota formation. Minimum TOC @ 6037'. 28 sxs type III cement (1.39 yield, 14.5 ppg). WOC a minimum of 18 hrs prior to completing.

Special Drilling Operations (Gas/Mist Drilling):

The following equipment will be operational while gas/mist drilling:

- An anchored blooie line will be utilized to discharge all cuttings and circulating medium to the blow pit a minimum of 100' from the wellhead.
- Compressors will be located a minimum of 100' from the wellhead in the opposite direction from the blooie line.
- Engines will have spark arresters or water-cooled exhaust.
- Deduster equipment will be utilized.
- The rotating head will be properly lubricated and maintained.
- A float valve will be utilized above the bit.
- Mud circulating equipment, water, and mud materials will be sufficient to maintain control of the well.

Additional Information:

- The Mesaverde and/or Dakota formations will be completed and commingled if both formations are completed.
- No abnormal temperatures or hazards are anticipated.
- Anticipated pore pressures are as follows:
Dakota 1900 psi

Angela Ibara
Sr. Staff Engineer

5/11/05
Date

King #1B

1700' FNL, 1980' FEL
Unit G, Section 22, T30N, R10W
San Juan County, NM

LAT: 36 deg 48.0 min

LONG: 107 deg 52.1 min

GL = 6,276'

KB= 6,284'

Current Wellbore Diagram

Surface Casing:

9-5/8" 32.3# WC-50
Set @ 246'
TOC @ circ to surf

Intermediate Casing:

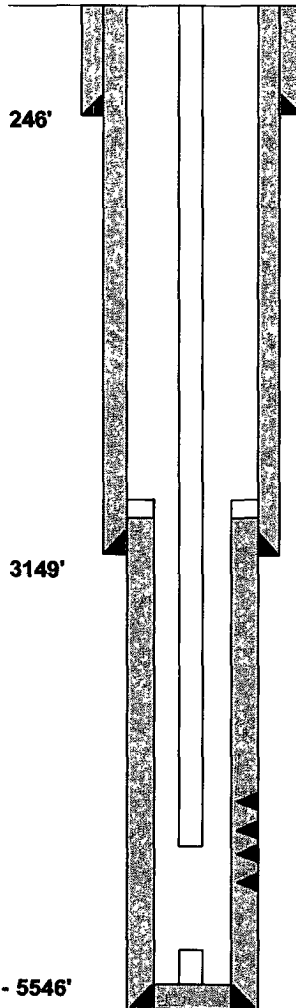
7" 23#/20# N-80/J-55
Set @ 3,149' 450 sxs
TOC @ circ to surf

Tubing:

2-3/8" 4.7# J-55
Set @ 5365
SN @ 5360

Production Liner:

4-1/2" 11.6# K-55
Set @ 3043' - 5546'
TOC @ 3060' CBL



Ojo Alamo	1,615'
Kirtland	1,697'
Fruitland	2,645'
Pictured Cliffs	2,900'
Lewis	3,025'
Heur Bent.	3,618'
Chacra	3,879'
Cliffhouse	4,493'
Menefee	4,678'
Point Lookout	5,152'
Mancos	5,496'
Gallup	6,404'
Greenhorn	7,129'
Graneros	7,184'
Two Wells	7,237'

PLO/LMN

4762' - 5466'

140,000# sand, 139,734 gal slickwater

Fish in hole at 5524' - 5519'

3043' - 5546'

PBTD= 5,519'

TD= 5,560'

PLO/LMN: 2 spf - 5466', 42', 10', 5390', 78', 60'; 1 spf - 5344', 24', 5291', 74', 40', 25', 14', 00', 5190', 74', 58', 46', 02', 5063', 28', 07', 4992', 76', 64', 48', 13', 4898', 83', 58', 42', 04', 4793', 62'

King #1B

1700' FNL, 1980' FEL
Unit G, Section 22, T30N, R10W
San Juan County, NM

LAT: 36 deg 48.0 min

LONG: 107 deg 52.1 min

GL = 6,276'

KB= 6,284'

Proposed Wellbore Diagram

Surface Casing:

9-5/8" 32.3# WC-50
Set @ 246'
TOC @ circ to surf

Intermediate Casing:

7" 23#/20# N-80/J-55
Set @ 3,149' 450 sxs
TOC @ circ to surf

Tubing:

2-1/16" 3.25 J-55 IJ
Set @ TBD
SN @ TBD

Production Liner:

4-1/2" 11.6# K-55
Set @ 3043' - 5546'
TOC @ 3060' CBL

Proposed Production Liner:

3-1/2" FLS 9.3# L-80
Set @ 5600' - 7440'
TOC @ 6,037'

Ojo Alamo	1,615'
Kirtland	1,697'
Fruitland	2,645'
Pictured Cliffs	2,900'
Lewis	3,025'
Heur Bent.	3,618'
Chacra	3,879'
Cliffhouse	4,493'
Menefee	4,678'
Point Lookout	5,152'
Mancos	5,496'
Gallup	6,404'
Greenhorn	7,129'
Graneros	7,184'
Two Wells	7,237'

PLO/LMN

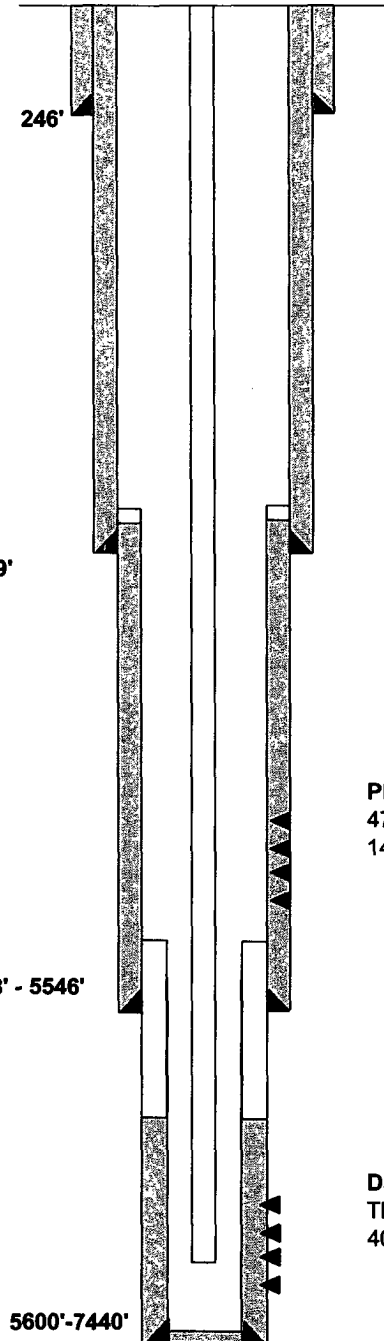
4762' - 5466'

140,000# sand, 139,734 gal slickwater

Dakota

TBD

40,000# TLC, slickwater



PBTB= 7,438'
TD= 7,440'