

UNITED STATES
DEPARTMENT OF THE INTERIOR
BUREAU OF LAND MANAGEMENT

2005 MAR 1 PM 12

APPLICATION FOR PERMIT TO DRILL OR REENTER

5. Lease Serial No.
NO-G-0502-1719

6. If Indian, Allottee or Tribe Name
Navajo Allotted

7. If Unit or CA Agreement, Name and No.

8. Lease Name and Well No.
Elmo Com #90-S

9. API Well No.
30-045- 32925

10. Field and Pool, or Exploratory
Basin Fruitland Coal

11. Sec., T. R. M. or Blk. and Survey or Area
6 Sec. 11, T24N, R11W

12. County or Parish
San Juan

13. State
NM

1a. Type of work: ☒ DRILL ☐ REENTER

1b. Type of Well: ☐ Oil Well ☒ Gas Well ☐ Other ☒ Single Zone ☐ Multiple Zone

2. Name of Operator
Dugan Production Corp.

3a. Address **709 East Murray Drive, Farmington, NM 87401** 3b. Phone No. (include area code)
505-325-1821

4. Location of Well (Report location clearly and in accordance with any State requirements.)*
At surface **1635' FNL & 1435' FEL, Unit G, NMPM, Lat. 36.1951, Long. 107.5803**
At proposed prod. zone

14. Distance in miles and direction from nearest town or post office*
Approximately 8-miles west of Blanco Trading Post

15. Distance from proposed* location to nearest property or lease line, ft. (Also to nearest drig. unit line, if any) **1435'** 16. No. of acres in lease **160.0** 17. Spacing Unit dedicated to this well **N/2 320-acres 325.76**

18. Distance from proposed location* to nearest well, drilling, completed, applied for, on this lease, ft. **Approx. 2,450'** 19. Proposed Depth **1355'** 20. BLM/BIA Bond No. on file

21. Elevations (Show whether DF, KDB, RT, GL, etc.) **GL-6580'** 22. Approximate date work will start* **04/01/2005** 23. Estimated duration **5-days**

24. Attachments

The following, completed in accordance with the requirements of Onshore Oil and Gas Order No. 1, shall be attached to this form:

- Well plat certified by a registered surveyor.
- A Drilling Plan.
- A Surface Use Plan (if the location is on National Forest System Lands, the SUPO shall be filed with the appropriate Forest Service Office).
- Bond to cover the operations unless covered by an existing bond on file (see Item 20 above).
- Operator certification
- Such other site specific information and/or plans as may be required by the authorized officer.

25. Signature **Kurt Fagrelin** Name (Printed/Typed) **Kurt Fagrelin** Date **02/26/2005**

Title **Geologist**

Approved by (Signature) **Roland Adams** Name (Printed/Typed) **ROLAND ADAMS** Date **8/12/05**

Title **Acting AFM** Office **FARMINGTON DISTRICT OFFICE**

Application approval does not warrant or certify that the applicant holds legal or equitable title to those rights in the subject lease which would entitle the applicant to conduct operations thereon.
Conditions of approval, if any, are attached.

Title 18 U.S.C. Section 1001 and Title 43 U.S.C. Section 1212, make it a crime for any person knowingly and willfully to make to any department or agency of the United States any false, fictitious or fraudulent statements or representations as to any matter within its jurisdiction.

*(Instructions on page 2)

A water based gel-mud will be used to drill surface and production casing hole. Standard 2,000 psi BOP will be used to drill production hole. The Fruitland Coal will be completed from approximately 1180' - 1195'. The interval will be fractured.

This action is subject to technical and procedural review pursuant to 43 CFR 3165.3 and appeal pursuant to 43 CFR 3165.4

NMOC

DRILLING OPERATIONS AUTHORIZED ARE SUBJECT TO COMPLIANCE WITH ATTACHED "GENERAL REQUIREMENTS".

District I
PO Box 1980, Hobbs, NM 88241-1980

District II
PO Drawer 00, Artesia, NM 88211-0719

District III
1000 Rio Brazos Rd., Aztec, NM 87410

District IV
PO Box 2088, Santa Fe, NM 87504-2088

State of New Mexico
Energy, Minerals & Natural Resources Department

OIL CONSERVATION DIVISION
PO Box 2088
Santa Fe, NM 87504-2088

Form C-102
Revised February 21, 1994
Instructions on back
Submit to Appropriate District Office
State Lease - 4 Copies
Fee Lease - 3 Copies

☐ AMENDED REPORT

WELL LOCATION AND ACREAGE DEDICATION PLAT

*API Number		*Pool Code 71629	*Pool Name BASIN FRUITLAND COAL
*Property Code 34948	*Property Name ELMO COM		*Well Number 90S
*OGRID No. 006515	*Operator Name DUGAN PRODUCTION CORPORATION		*Elevation 6580

¹⁰ Surface Location

UL or lot no. G	Section 11	Township 24N	Range 11W	Lot Idn	Feet from the 1635	North/South line NORTH	Feet from the 1435	East/West line EAST	County SAN JUAN
--------------------	---------------	-----------------	--------------	---------	-----------------------	---------------------------	-----------------------	------------------------	--------------------

¹¹ Bottom Hole Location If Different From Surface

UL or lot no.	Section	Township	Range	Lot Idn	Feet from the	North/South line	Feet from the	East/West line	County
---------------	---------	----------	-------	---------	---------------	------------------	---------------	----------------	--------

¹² Dedicated Acres 325.16	¹³ Joint or Infill	¹⁴ Consolidation Code	¹⁵ Order No.
---	-------------------------------	----------------------------------	-------------------------

NO ALLOWABLE WILL BE ASSIGNED TO THIS COMPLETION UNTIL ALL INTERESTS HAVE BEEN CONSOLIDATED
OR A NON-STANDARD UNIT HAS BEEN APPROVED BY THE DIVISION

<p>¹⁶</p> <p>DUGAN NM-17015</p> <p>DUGAN NO-G-0502-1719</p> <p>11</p> <p>90-S</p> <p>5307.72'</p> <p>1635'</p> <p>1435'</p> <p>5368.44'</p> <p>5273.40'</p> <p>5286.60'</p> <p>RECEIVED 070 FARMINGTON NM 2005 MAR 12 CO</p>	<p>¹⁷ OPERATOR CERTIFICATION</p> <p>I hereby certify that the information contained herein is true and complete to the best of my knowledge and belief</p> <p><i>Kurt Fagrelus</i></p> <p>Signature</p> <p>Kurt Fagrelus</p> <p>Printed Name</p> <p>Geologist</p> <p>Title</p> <p>February 26, 2005</p> <p>Date</p>
	<p>¹⁸ SURVEYOR CERTIFICATION</p> <p>I hereby certify that the well location shown on this plat was plotted from field notes of actual surveys made by me or under my supervision, and that the same is true and correct to the best of my belief.</p> <p>Survey Date: NOVEMBER 24, 2004</p> <p>Signature and Seal of Professional Surveyor</p> <p><i>Jason C. Edwards</i></p> <p>Jason C. Edwards</p> <p>NEW MEXICO</p> <p>REGISTERED PROFESSIONAL SURVEYOR</p> <p>15269</p> <p>Certificate Number 15269</p>

Submit 3 Copies To Appropriate District Office
District I
1625 N. French Dr., Hobbs, NM 88240
District II
1301 W. Grand Ave., Artesia, NM 88210
District III
1000 Rio Brazos Rd., Aztec, NM 87410
District IV
1220 S. St. Francis Dr., Santa Fe, NM 87505

State of New Mexico
Energy, Minerals and Natural Resources

Form C-103
March 4, 2004

OIL CONSERVATION DIVISION
1220 South St. Francis Dr.
Santa Fe, NM 87505

WELL API NO.
5. Indicate Type of Lease Navajo Allot. STATE <input type="checkbox"/> FEE <input type="checkbox"/>
6. State Oil & Gas Lease No. Navajo Allot. NO-G-0502-1719
7. Lease Name or Unit Agreement Name Elmo Com
8. Well Number 90-S
9. OGRID Number 006515
10. Pool name or Wildcat Basin Fruitland Coal

SUNDRY NOTICES AND REPORTS ON WELLS
(DO NOT USE THIS FORM FOR PROPOSALS TO DRILL OR TO DEEPEN OR PLUG BACK TO A DIFFERENT RESERVOIR. USE "APPLICATION FOR PERMIT" (FORM C-101) FOR SUCH PROPOSALS.)

1. Type of Well:

Oil Well ☐ Gas Well ☒ Other

2. Name of Operator

Dugan Production Corp.

3. Address of Operator

709 East Murray Drive, Farmington, New Mexico 87401

4. Well Location

Unit Letter **G** : **1635** feet from the **north** line and **1435** feet from the **east** line

Section **11** Township **24N** Range **11W** NMPM County **San Juan**

11. Elevation (Show whether DR, RKB, RT, GR, etc.)
GL-6580

Pit or Below-grade Tank Application (For pit or below-grade tank closures, a form C-144 must be attached)

Pit Location: UL **G** Sect **11** Twp **24N** Rng **11W** Pit type **Drilling** Depth to Groundwater **+200'** Distance from nearest fresh water well **+1000'**

Distance from nearest surface water **500'** Below-grade Tank Location UL Sect Twp Rng ;
feet from the line and feet from the line

12. Check Appropriate Box to Indicate Nature of Notice, Report or Other Data
NOTICE OF INTENTION TO:

PERFORM REMEDIAL WORK ☐ PLUG AND ABANDON ☐

TEMPORARILY ABANDON ☐ CHANGE PLANS ☐

PULL OR ALTER CASING ☐ MULTIPLE COMPLETION ☐

OTHER: Reserve pit for drilling, lined ☒

SUBSEQUENT REPORT OF:

REMEDIAL WORK ☐ ALTERING CASING ☐

COMMENCE DRILLING OPNS. ☐ PLUG AND ABANDONMENT ☐

CASING TEST AND CEMENT JOB ☐

OTHER: ☐

13. Describe proposed or completed operations. (Clearly state all pertinent details, and give pertinent dates, including estimated date of starting any proposed work). SEE RULE 1103. For Multiple Completions: Attach wellbore diagram of proposed completion or recompletion. A water based gel-mud will be used to drill surface and production casing hole. Standard 2,000 psi BOP will be used to drill production hole. The reserve pit will be lined with an impervious material and be abandoned as per BLM conditions of approval, following completion of the well *Follow NM OGD Rule 50 and guidelines for construction and abandonment of pits*

I hereby certify that the information above is true and complete to the best of my knowledge and belief. I further certify that any pit or below-grade tank has been/will be constructed or closed according to NMOCD guidelines ☒ a general permit ☐ or an (attached) alternative OCD-approved plan ☐.

SIGNATURE *Kurt Fagrelus* TITLE **Geologist** DATE **02/26/2005**

Type or print name **Kurt Fagrelus**

E-mail address: **kfagrelus@duganproduction.com** Telephone No. **505-325-1821**

(This space for State use)

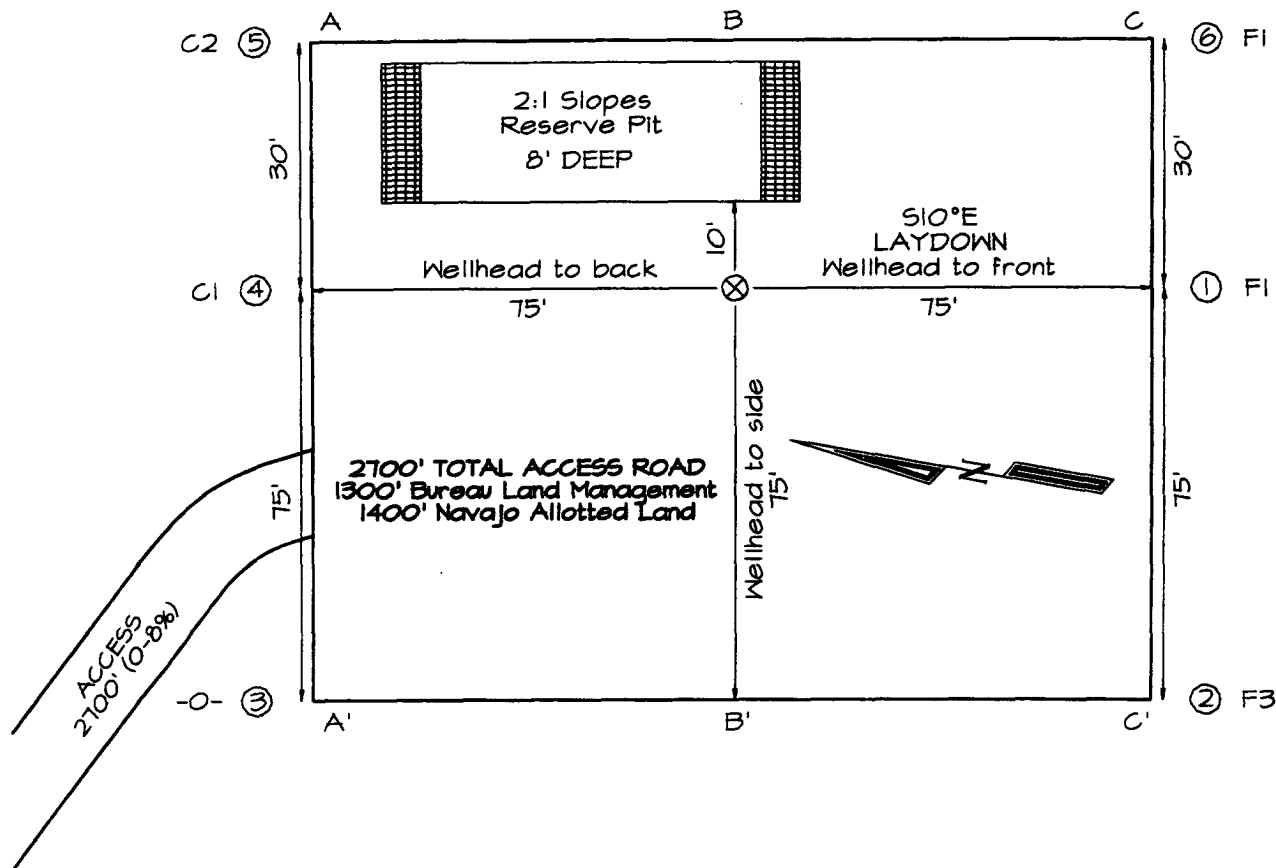
APPROVED BY *[Signature]* TITLE **DEPUTY OIL & GAS INSPECTOR, DIST. 2** DATE **AUG 15 2005**

Conditions of approval, if any: *Follow NM OGD Rule 50 and guidelines for pit construction and abandonment*

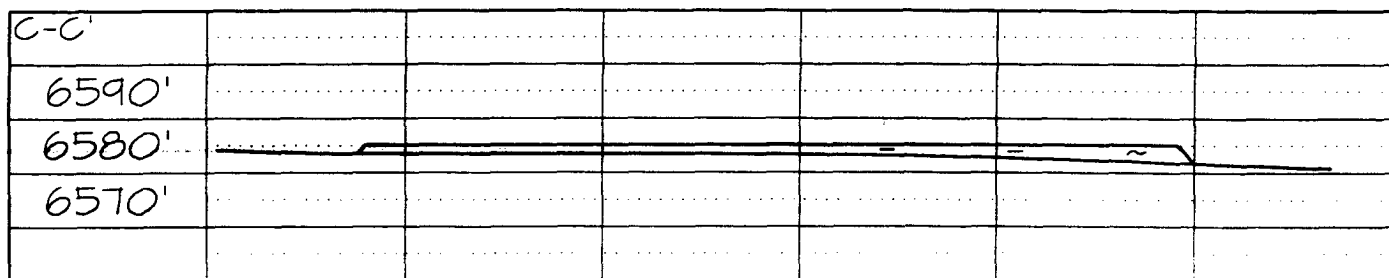
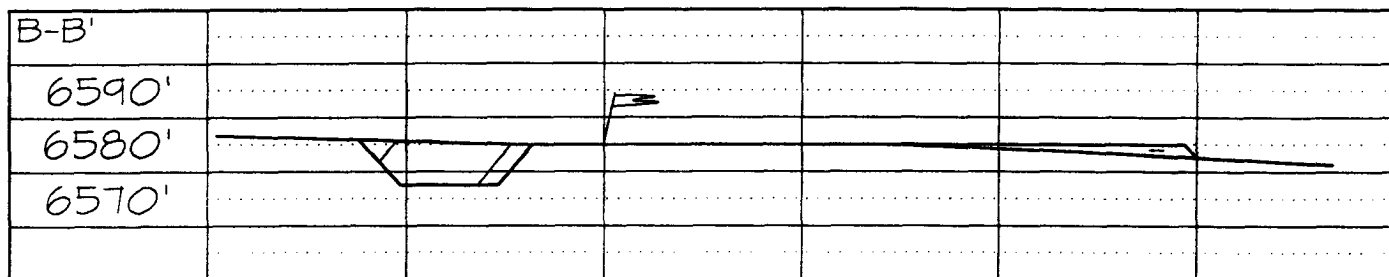
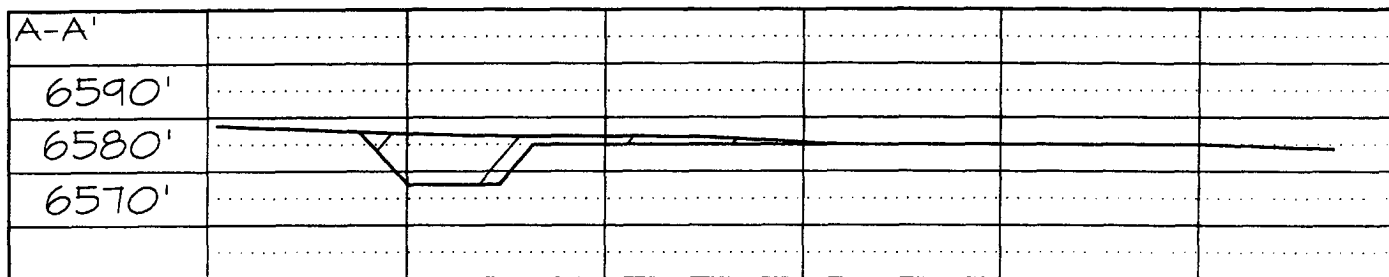
DUGAN PRODUCTION CORPORATION ELMO COM #90S
1635' FNL & 1435' FEL, SECTION 11, T24N, R11W, NMPM
SAN JUAN COUNTY, NEW MEXICO ELEVATION: 6580'

PLAT 3.

LATITUDE: 36°19'51"
LONGITUDE: 107°58'03"
 DATUM: NAD1927



PLAT NOTE:
 SURFACE OWNER
 Navajo Allotted Land



Note: Contractor should call One-Call for location of any marked or unmarked buried pipelines or cables on well pad and/or access road at least two (2) working days prior to construction

EXHIBIT B
OPERATIONS PLAN
Elmo Com #90-S

APPROXIMATE FORMATION TOPS:

Ojo Alamo	305'
Kirtland	385'
Fruitland	915'
Pictured Cliffs	1205'
Total Depth	1355'

Catch samples every 10 feet from 1100 feet to total depth.

LOGGING PROGRAM:

Run cased hole GR-CCL-CNL from total depth to surface.

CASING PROGRAM:

<u>Hole</u> <u>Size</u>	<u>Casing</u> <u>Size</u>	<u>Wt./ft.</u>	<u>Setting</u> <u>Depth</u>	<u>Grade and</u> <u>Condition</u>
11"	8-5/8"	24#	120'	J-55
7"	5-1/2"	14#	1355'	J-55

Plan to drill a 11" hole and set 120' of 8-5/8" OD, 24#, J-55 surface casing. Then plan to drill a 7" hole to total depth with gel-water mud program to test the Fruitland Coal. 5-1/2", 14#, J-55 production casing will be run and cemented. Cased hole GR-CCL-CNL log will be run. Productive zone will be perforated and fractured. After frac, the well will be cleaned out and production equipment will be installed.

CEMENTING PROGRAM:

Surface: Cement to surface with 70 cf Class B + 2% CaCl₂.
Circulate to surface.

Production Stage-Cement with 140 cf 2% lodense with
¼# celloflake/sx followed by 70 cf Class "B" with
¼# celloflake/sx.
Total cement slurry for production stage is 210 cf
Circulate cement to surface.

An adequate spacer will be pumped ahead of the cement slurry to help prevent mud contamination of the cement. An adequate number of casing centralizers will be run through usable water zones to ensure that casing is centralized through these zones. The adequate number of centralizers will be determined based on

API standards. Centralizers to impart a swirling action around the casing will be used just below and into the base of the lowest usable water zone. These devices will assist mud displacement, increase cement bonding potential and create an effective hydraulic seal. A chronological log will be kept which records the pump rate, pump pressure, slurry density, and slurry volume for the cement job. The log will be sent to the BLM after completion of the job.

WELLHEAD EQUIPMENT:

Huber 8-5/8"x5-1/2" casing head, 1000# WP, tested to 2000#.
Huber 5-1/2"x2-7/8" tubing head, 1000# WP, tested to 2000#.

BOP and Related Equipment will include for a 2000 psi system:

(Exhibit D)

Annular preventer, double ram, or 2 rams with one being blind and one being a pipe ram.

Kill line (2" minimum)

1 kill line valve (2" minimum)

1 choke line valve

2 chokes

Upper kelly cock valve with handle available

Safety valve and subs to fit all drill string connections in use.

Pressure gauge on choke manifold.

2" minimum choke line.

Fill-up line.

Contacts:

Dugan Prod.Corp. Office & Radio Dispatch: 325-1821

Mark Brown	327-3632 (H)
	320-8247 (M)

Kurt Fagrelus	325-4327 (H)
	320-8248 (M)

John Alexander	325-6927 (H)
	320-1935 (M)