

UNITED STATES
DEPARTMENT OF THE INTERIOR
BUREAU OF LAND MANAGEMENT

2005 JUN 13 PM 2:52

FORM APPROVED
OMB NO. 1004-0137
Expires: March 31, 2007

Lease Serial No.

SF - 078201

6. If Indian, Allottee or Tribe Name

NM

7. If Unit or CA Agreement, Name and No.

8. Lease Name and Well No.

Florance O 3 S

9. API Well No.

30-045-33165

10. Field and Pool, or Exploratory

Basin Fruitland Coal

11. Sec., T., R., M., or Blk. and Survey or Area

I 24 T 30N R 09W

1a. Type of Work:

☒ DRILL

☐ REENTER

1b. Type of Well:

☐ Oil Well

☒ Gas Well

☐ Other

☒ Single Zone

☐ Multiple Zone

2. Name of Operator

BP America Production Company

3a. P.O. Box 3092

Street Address

Houston, TX 77079-2064

3b. Phone No. (include area code)

281-366-4081

4. Location of well (Report location clearly and in accordance with any State requirements. *)

At surface

1330' FSI 765" FEI NE SE Lat. 36.7958 Long. 107.7247

At proposed prod. zone

14. Distance in miles and direction from the nearest town or post office*

22.7 MILES EAST FROM AZTEC

12. County or Parish

SAN JUAN

13. State

NM

15. Distance from proposed*

location to nearest
property or lease line, ft.

765'

(Also to nearest drlg. unit line, if any)

16. No. of acres in lease

348.62

17. Spacing Unit dedicated to this well

E/P 348.62

18. Distance from proposed location*

to nearest well, drilling, completed,
applied for, on this lease, ft.

150'

19. Proposed Depth

3088'

20. BLM/ BIA Bond No. on file

WY2924

21. Elevations (Show whether DF, RT, GR, etc.)

6271' GR

22. Approximate date work will start*

10/15/2005

23. Estimated duration

3 DAYS

24. Attachments

The following, completed in accordance with the requirements of Onshore Oil and Gas Order No. 1 shall be attached to this form:

1. Well plat certified by a registered surveyor.
2. A Drilling Plan.
3. A Surface Use Plan (if the location is on National Forest System Lands, the SUPO shall be filed with the appropriate Forest Service Office).

4. Bond to cover the operations unless covered by existing bond on file (see item 20 above).
5. Operator certification.
6. Such other site specific information and/ or plans as may be required by the authorized officer.

25. Signature

Cherry Hlava

Cherry Hlava

Date

6/9/2005

Title

Regulatory Analyst

Approved By (Signature)

Cherry Hlava

Name (Printed/ Typed)

Date

5/22/05

Title

Acting Field Manager - Mineral

Office

Application approval does not warrant or certify that the applicant holds legal or equitable title to those rights in the subject lease which would entitle the applicant to conduct operations thereon.

Conditions of approval, if any, are attached.

Title 18 U.S.C. Section 1001 and Title 43 U.S.C. Section 1212, make it a crime for any person knowingly and willfully to make to any department or agency of the United States any false, fictitious or fraudulent statements or representations as to any matter within its jurisdiction.

* (Instructions on page 2)

District I
PO Box 1980, Hobbs NM 88241-1980
District II
PO Drawer KK, Artesia, NM 87211-0719
District III
1000 Rio Brazos Rd., Aztec, NM 87410
District IV
PO Box 2088, Santa Fe, NM 87504-2088

State of New Mexico
Energy, Minerals & Natural Resources Department

OIL CONSERVATION DIVISION
PO Box 2088
Santa Fe, NM 87504-2088

Form C-102
Revised February 21, 1994
Instructions on back
Submit to Appropriate District Office
State Lease - 4 Copies
Fee Lease - 3 Copies

☐ AMENDED REPORT

WELL LOCATION AND ACREAGE DEDICATION PLAT

¹ API Number	² Pool Code 71629	³ Pool Name Basin Fruitland Coal
⁴ Property Code 000551	⁵ Property Name Florance O	⁶ Well Number # 3S
⁷ OGRID No. 000778	⁸ Operator Name BP AMERICA PRODUCTION COMPANY	⁹ Elevation 6271

¹⁰ Surface Location

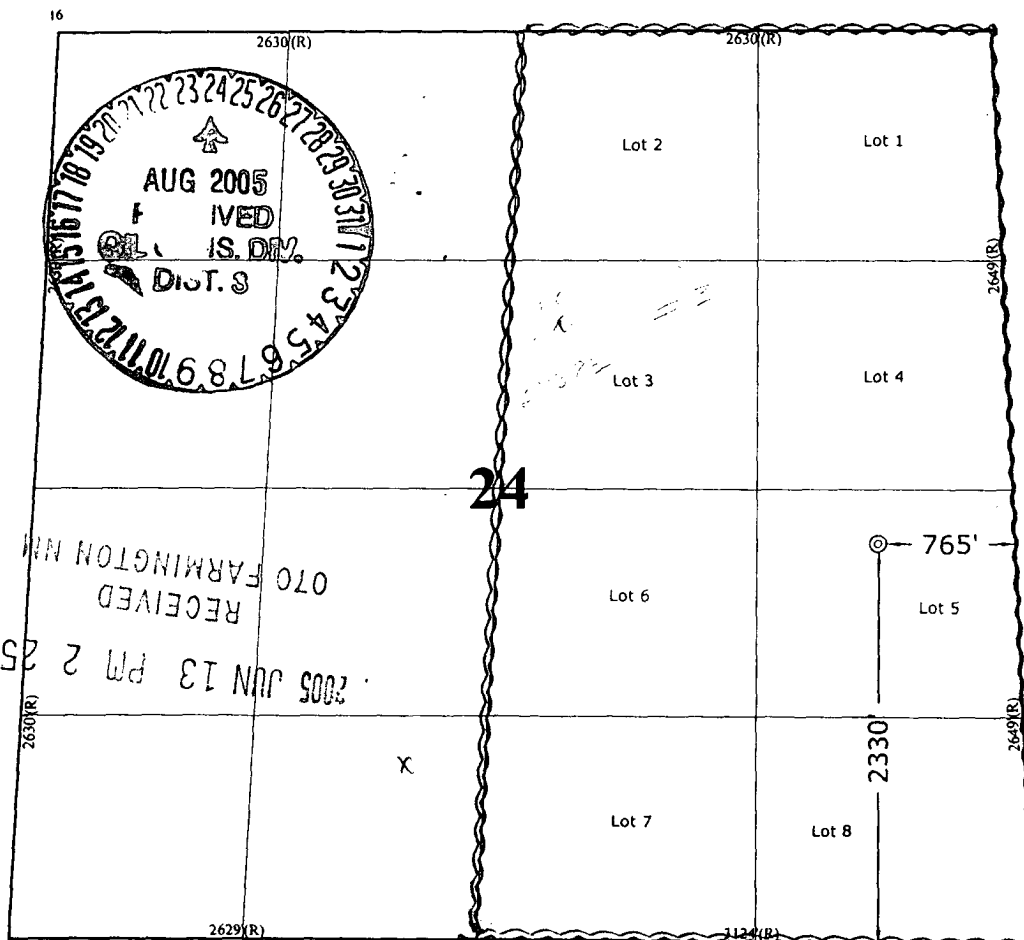
UL or Lot No.	Section	Township	Range	Lot Idn	Feet from the	North/South line	Feet from the	East/West line	County
I (Lot 5)	24	30 N	9 W		2330	SOUTH	765	EAST	SAN JUAN

¹¹ Bottom Hole Location If Different From Surface

¹ UL or lot no.	Section	Township	Range	Lot Idn	Feet from the	North/South line	Feet from the	East/West line	County

¹² Dedicated Acres 348.62	¹³ Joint or Infill	¹⁴ Consolidation Code	¹⁵ Order No.
---	-------------------------------	----------------------------------	-------------------------

NO ALLOWABLE WILL BE ASSIGNED TO THIS COMPLETION UNTIL ALL INTERESTS HAVE BEEN CONSOLIDATED
OR A NON-STANDARD UNIT HAS BEEN APPROVED BY THE DIVISION



¹⁷ OPERATOR CERTIFICATION

I hereby certify that the information contained herein is true and complete to the best of my knowledge and belief.

Signature
Cherry Hlava
Printed Name
Cherry Hlava
Title
Regulatory Analyst
Date
6-8-05

¹⁸ SURVEYOR CERTIFICATION

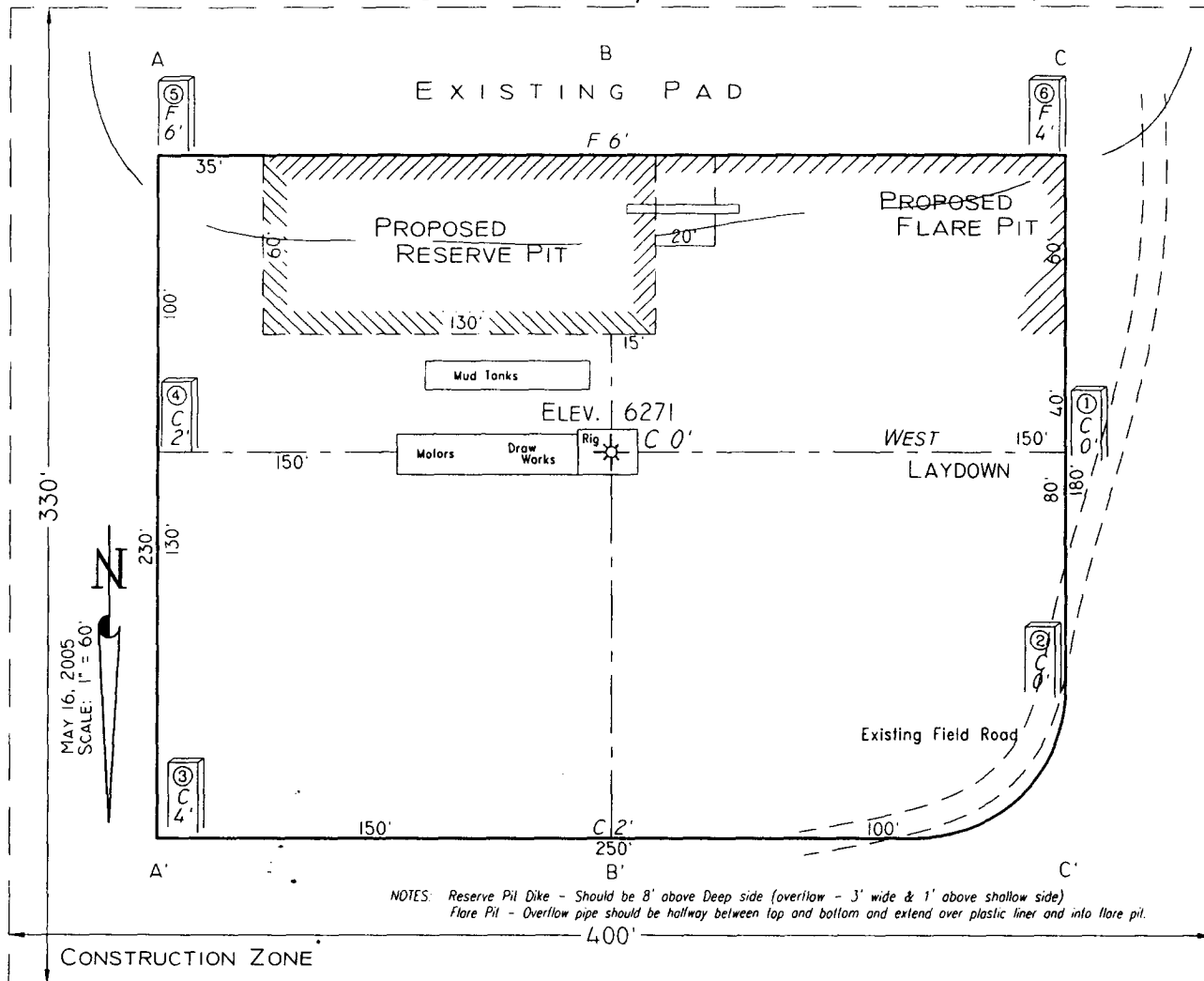
I hereby certify that the well location shown on this plat was plotted from field notes of actual surveys made by me or under my supervision, and that the same is true and correct to the best of my belief.

Date of Survey
May 16, 2005
Signature and Seal of Professional Surveyor

7016
Certificate Number

PAD LAYOUT PLAN & PROFILE
BP AMERICA PRODUCTION COMPANY
 Florance O # 3S
 2330' F/SL 765' F/EL
 SEC. 24, T30N, R9W, N.M.P.M.
 SAN JUAN COUNTY, NEW MEXICO

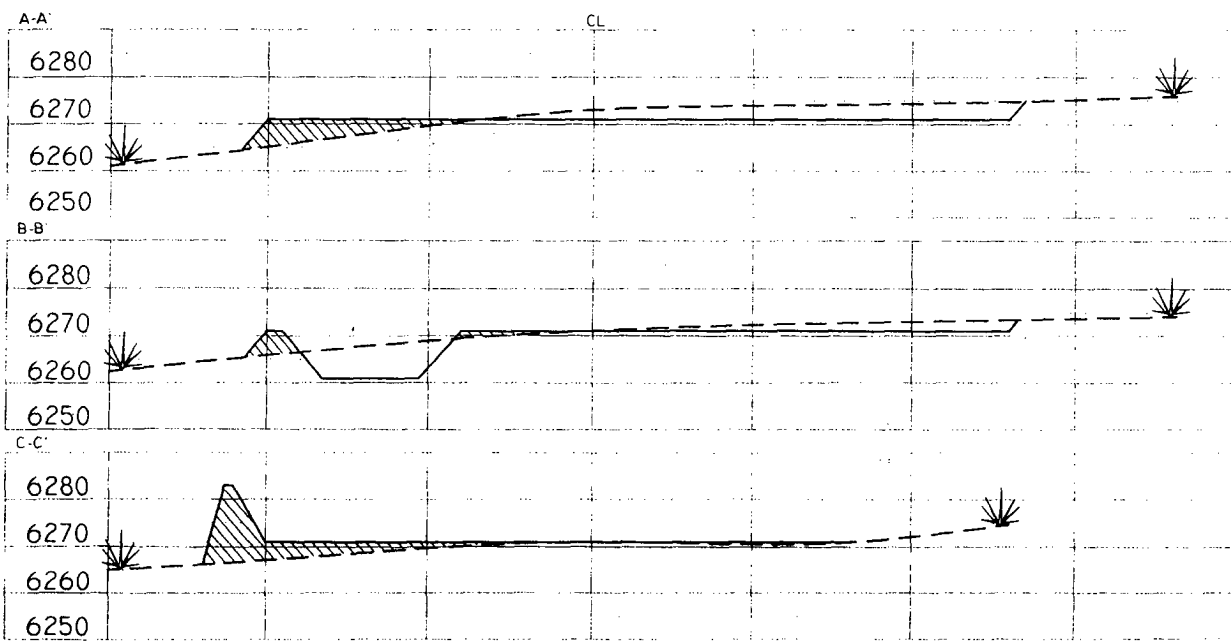
Lat: 36.7958°
 Long: 107.7247°
 Lat: 36°47'45"
 Long: 107°43'29"



NOTES: Reserve Pit Dike - Should be 8' above Deep side (overflow - 3' wide & 1' above shallow side)
 Flare Pit - Overflow pipe should be halfway between top and bottom and extend over plastic liner and into flare pit.

Area of Construction Zone - 330'x400' or 3.03 acres, more or less

SCALE: 1"=60'-HORIZ.
 1"=40'-VERT.



NOTE: Contractor should call One-Call for location of any marked or unmarked buried pipelines or cables on well pad and/or access road at least two (2) working days prior to construction.

Cuts and fills shown are approximate - final finished elevation is to be adjusted so earthwork will balance. Corner stakes are approximate and do not include additional areas needed for sideslopes and drainages. Final Pad Dimensions are to be verified by Contractor.

VANN SURVEYS
 P. O. Box 1306
 Farmington, NM

Additional Operator Remarks
Florance O 3S
APD

Notice of Staking was submitted on 06/02/05.

Please note the well is staked on an existing well pad.

BP America Production Company respectfully requests permission to drill the subject well to a total depth of approximately 3088' and complete into the Basin Fruitland Coal.

If terrain allows it is our intent to pre-set the 8 5/8" casing on the above mentioned well by drilling a surface hole with air/air mist in lieu of drilling mud and the surface casing be cemented with 94.5 cu/ft type I-II, 20% FLYASH, 14.5 PPG, 7.41 gal/sk, 1.61 cf/sk Yield, 80 DEG BHST ready mix cement. If the area will not allow for pre-set the approved cement program will be followed.

SUPPLEMENTAL TO SURFACE USE PLAN

New Facilities:

A 4.5" diameter buried steel pipeline that is +/- 100 feet in length will be constructed. The pipe wall thickness is .156 and the pipe wall strength is 42,000#. It will be adjacent to the access road and tie the well into an existing gas meter operated by BP America Production Company. The pipeline will not be used to transport gas to drill the well. After the well is spud the pipeline will be authorized by a right-of-way issued by El Paso Field Services.

APD/ROW

BRAZIL AMERICA PRODUCTION COMPANY
DRILLING AND COMPLETION PROGRAM

6/7/2005

Lease: Florance O

Well Name & No. Florance O #3S

Field: Basin Fruitland Coal

County: San Juan, New Mexico

Surface Location: SE 1/4, S 24, T30N, R9W : 2330' FSL, 765' FEL

Minerals:

Surface: Lat: 36.7958 Long:-107.7247

Rig :	Aztec 507
-------	-----------

BH Location: SE 1/4, S 24, T30N, R9W : 2330' FSL, 765' FEL

OBJECTIVE: Drill to TD, set 5.5" casing, perf and frac the Fruitland Coal interval.

[illegible]

SPECIAL TESTS

TYPE	FREQUENCY	DEPTH		FREQUENCY	DEPTH
None	none	none	to TD	Geologist	0 - TD

REMARKS:

MUD PROGRAM:					
Interval	TypeMud	#/gal	Vis, sec/qt	/30 min	Other Specification
320'	Spud	8.8 - 9.0	Sufficient to clean hole.		
3,088'	Water/LSND	8.4 - 9.0		<9	Sweep hole while whilst water drilling, LCM onsite

CASING PROGRAM:

CasingString	Depth	Size	Casing Size	Grade, Thread	Weight	Landing Point	Cement
Surface/Conductor	320'	12 1/4"	8-5/8"	H-40 ST&C	20#		cmt to surface
Production	3,088'	7 7/8"	5-1/2"	J-55	15.5#		cmt to surface

CORING PROGRAM:

None

COMPLETION PROGRAM:

Rigless, Limited Entry Hydraulic Frac

GENERAL REMARKS:

Notify BLM/NMOCD 24 hours prior to Spud, BOP testing, and Casing and Cementing.

BOP Pressure Testing Requirements

Formation	Depth	Anticipated bottom hole pressure	Max anticipated surface pressure**
Fruitland	2,767'	500	0
Pictured Cliffs	2,988'	200	0
	-		

Requested BOP Pressure Test Exception = 1500 psi

** Note: Determined using the following formula: $ABHP - (.22 \times TVD) = ASP$

Form 46 Reviewed by:

Logging program reviewed by:

DATE:

APPROVED:

DATE:

DNH/DDR	TT/HGJ
---------	--------

For Drilling Dept.

7-Jun-05

For Production Dept.

Form 46 7-84bw

Cementing Program

Well Name: Florance O #3S
 Location: Sec 24 - 30N - 9W: 2330 FSL, 765 FEL
 County: San Juan
 State: New Mexico

Well Flac
 Formation: Fruitland Coal
 KB Elev (est) 6282
 GL Elev. (est) 6271

Casing Program:

Casing String	Est. Depth (ft.)	Hole Size (in.)	Casing Size (in.)	Thread	TOC (ft.)
Surface	320	12 1/4	8 5/8	8rd	Surface
Production -	3088	7 7/8	5 1/2	8rd	Surface

Casing Properties:

(No Safety Factor Included)

Casing String	Size (in.)	Weight (lb/ft)	Grade
Surface	8 5/8	20	H-40
Production -	5 1/2	15.5	J-55

Mud Program

Apx. Interval (ft.)	Mud Type	Mud Weight	Recommended Mud Properties Prio Cementing:
			PV <20
			YP <10
			Fluid Loss <6
0 - SCP	Water/Spud	8.6-9.2	
SCP - TD	Water/LSND	8.6-9.2	

Cementing Program:

	Surface	Production
Excess %, Lead	100	40
Excess %, Tail	NA	40
BHST (est deg. F)	75	120
Special Instructions	1,6	2,4,6

1. Do not wash pumps and lines.
2. Wash pumps and lines.
3. Reverse out
4. Run Blend Test on Cement
5. Record Rate, Pressure, and Density on 3.5" disk
6. Confirm densitometer with pressurized mud scales

Surface:

Preflush 20 bbl. FreshWater

Slurry 1 208 sx Class C Cement 264 cuft
 TOC@Surface + 2% CaCl2 (accelerator)

0.4127 cuft/ft OH

Slurry Properties:	Density (lb/gal)	Yield (ft3/sk)	Water (gal/sk)
Slurry 1	15.2	1.27	5.8

Casing Equipment:

- 8-5/8", 8R, ST&C
- 1 Guide Shoe
- 1 Top Wooden Plug
- 1 Autofill insert float valve
- Centralizers, as needed
- 1 Stop Ring
- 1 Thread Lock Compound

BP American Production Company

Well Control Equipment Schematic

