

UNITED STATES  
DEPARTMENT OF THE INTERIOR  
BUREAU OF LAND MANAGEMENT

SUNDRY NOTICES AND REPORTS ON WELLS

Do not use this form for proposals to drill or to re-enter an  
Abandoned well. Use Form 3160-3 (APD) for such proposals.

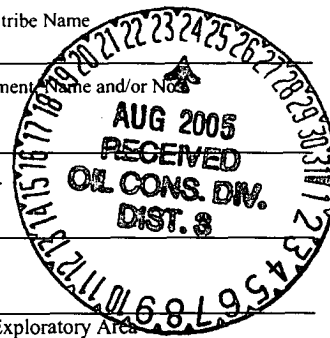
FORM APPROVED  
OMB No. 1004-0135  
Expires November 30, 2000

5. Lease Serial No.  
NMSF 080517

6. If Indian, Allottee or tribe Name

7. If Unit or CA/Agreement Name and/or No.

070 FARMINGTON NM



**SUBMIT IN TRIPLICATE - Other instructions on reverse side**

1. Type of Well  
☐ Oil Well ☒ Gas Well ☐ Other

8. Well Name and No.  
Schneider GC 1M

2. Name of Operator  
BP AMERICA PRODUCTION COMPANY

9. API Well No.  
30-045-32610

3a. Address  
PO BOX 3092 HOUSTON, TX 77253

3b. Phone No. (include area code)  
281-366-4081

10. Field and Pool, or Exploratory Area  
BASIN DAKOTA & BLANCO MESAVERDE

4. Location of Well (Footage, Sec., T., R., M., or Survey Description)  
925' FSL & 1695' FWL; SEC 28 32N 10W NENW Mer NMP

11. County or Parish, State  
SAN JUAN, NM

12. CHECK APPROPRIATE BOX(ES) TO INDICATE NATURE OR NOTICE, REPORT, OR OTHER DATA

TYPE OF SUBMISSION

**THIS IS A VIOLATION OF CFR 3162.3-2. APPROVAL IS REQUIRED PRIOR TO PERFORMING SUCH CHANGES. IN THE FUTURE, SUCH VIOLATIONS MAY BE SUBJECT TO PENALTIES.**

☐ Convert to Injection ☒ Plug Back

13. Describe Proposed or Completed Operation (clearly state all pertinent details, including estimated starting date of any proposed work and approximate duration thereof. If the proposal is to deepen directionally or recompleat horizontally, give subsurface locations and measured and true vertical depths of all pertinent markers and zones. Attach the Bond under which the work will be performed or provide the Bond No. on file with BLM/BIA. Required subsequent reports shall be filed within 30 days following completion of the involved operations. If the operation results in a multiple completion or recompletion in a new interval, a Form 3160-4 shall be filed once testing has been completed. Final Abandonment Notices shall be filed only after all requirements, including reclamation, have been completed, and the operator has determined that the site is ready for final inspection.

The above mentioned well was granted APD approval on 12/22/04 as a directional well.

Due to an unfortunate oversight & miscommunication on BP's part the said well was drilled as a straight hole. We are making every effort to insure it does not happen again in the future.

Please accept the attached amended drilling plan, cement program & plats as an after the fact Notice of Intent.

Jim Lavato was contacted as soon as we discovered the problem on 8/4/05.  
Please call if you have any questions.

14. I hereby certify that the foregoing is true and correct  
Name (Printed/typed)

Cherry Hlava

Title Regulatory Analyst (281) 366-4081

Signature

*Cherry Hlava*

Date 08/09/2005

THIS SPACE FOR FEDERAL OR STATE OFFICE USE

Approved by

*[Signature]*

Title

Pet. Eng

Date

8/22/05

Conditions of approval, if any, are attached. Approval of this notice does not warrant or certify that the applicant holds legal or equitable title to those rights in the subject lease which would entitle the applicant to conduct operations thereon.

Office

FFO

Title 18 U.S.C. Section 1001 and Title 43 U.S.C. Section 1212, make it a crime for any person knowingly and willfully to make to any department or agency of the United States any false, fictitious or fraudulent statements or representations as to any matter within its jurisdiction.

NMOC

# BP AMERICA PRODUCTION COMPANY

## DRILLING AND COMPLETION PROGRAM

04/23/2004 (Revised 07/15/2005)

<b>Lease:</b>	Schneider	<b>Well Name &amp; No.</b>	Schneider GC #1M	<b>Field:</b>	Blanco Mesaverde/Basin Dakota
<b>County:</b>	San Juan, New Mexico	<b>Surface Location:</b>	28-32N-10W: 925' FNL, 1695' FWL		
<b>Minerals:</b>	State	<b>Surface:</b>	Lat: 36.9607369 deg; Long: -107.8900765 deg		
<b>Rig :</b>	Aztec 184	<b>BH Location:</b>	same		

**OBJECTIVE:** Drill 220' below the top of the Two Wells Mbr, set 4-1/2" production casing, Stimulate DK, MF, and PL intervals.

METHOD OF DRILLING		APPROXIMATE DEPTHS OF GEOLOGICAL MARKER			
TYPE OF TOOLS	DEPTH OF DRILLING	Actual GL:	6106	Estimated KB: 6,120.0'	
Rotary	0 - TD	Marker		SUBSEA	TVD
LOG PROGRAM		Ojo Alamo		4,741'	1,379'
<b>Type</b>	<b>Depth Interval</b>	Kirtland		4,695'	1,425'
Single Run		Fruitland	*	3,784'	2,336'
		Fruitland Coal	*	3,590'	2,530'
		Pictured Cliffs	*	3,200'	2,920'
		Lewis	*	2,951'	3,169'
Cased Hole		Cliff House	#	1,640'	4,480'
TDT- CBL	TD to 7" shoe	Menefee	#	1,257'	4,863'
	Identify 4 1/2" cement top	Point Lookout	#	903'	5,217'
REMARKS:		Mancos		551'	5,569'
- Please report any flares (magnitude & duration).		Greenhorn		-1,149'	7,269'
		Graneros (bent,mkr)		-1,197'	7,317'
		Two Wells	#	-1,274'	7,394'
		Paguate	#	-1,333'	7,453'
		Cubero	#	-1,352'	7,472'
		L. Cubero	#	-1,371'	7,491'
		Encinal Cyn	#	-1,415'	7,535'
		TOTAL DEPTH:		-1,494'	7,614'
		# Probable completion interval			* Possible Pay
SPECIAL TESTS		DRILL CUTTING SAMPLES		DRILLING TIME	
TYPE		FREQUENCY	DEPTH	FREQUENCY	DEPTH
None		30'/10' intervals	3,269' to TD	Geolograph	0 - TD
REMARKS:					

MUD PROGRAM:					
Interval	TypeMud	#/gal	Vis, sec/qt	/30 min	Other Specification
200'	Spud	8.8 - 9.0	Sufficient to clean hole.		
3,269'	Water/LSND	8.4 - 9.0		<9	Sweep hole while whilst water drilling, LCM onsite
7,614'	Air	1	1000 cfm for hammer		Volume sufficient to maintain a stable and clean wellbore

CASING PROGRAM:							
CasingString	Depth	Size	Casing Size	Grade, Thread	Weight	Landing Point	Cement
Surface/Conductor	200'	13 1/2"	9-5/8"	H-40 ST&C	32#		cmt to surface
Intermediate 1	3,269'	8-3/4"	7"	J/K-55 ST&C	20#	100' below LWIS	cmt to surface
Production	7,614'	6-1/4"	4-1/2"	P-110	11.6#	DKOT	150' inside Intermediate - TOC survey required

CORING PROGRAM:							
None							

COMPLETION PROGRAM:							
Rigless, 2-3 Stage Limited Entry Hydraulic Frac, FMC Unihead							

GENERAL REMARKS:							
Notify BLM/NMOC 24 hours prior to Spud, BOP testing, and Casing and Cementing.							

BOP Pressure Testing Requirements			
Formation	Depth (TVD)	Anticipated bottom hole pressure	Max anticipated surface pressure**
Cliffhouse	4,480'	500	0
Point Lookout	5,217'	600	0
Dakota	7,394'	2600	973.32

Requested BOP Pressure Test Exception = 1500 psi

\*\* Note: Determined using the following formula: ABHP - (.22\*TVD) = ASP

Form 46 Reviewed by:	Logging program reviewed by:	DATE:	APPROVED:	DATE:
HGJ	JMP	23/2004 (Revised 07/15/20)		
Form 46 7-84bw	For Drilling Dept.		For Production Dept.	

# Cementing Program

## Revised

Well Name: Schneider GC 1M  
 Location: 28-32N-10W, 925 FNL, 1695 FWL  
 County: San Juan  
 State: New Mexico

Field: Blanco Mesaverde / Basin Dakota  
 API No.  
 Well Flac  
 Formation: Blanco Mesaverde/Basin Dakota  
 KB Elev (est) 6120  
 GL Elev. (est) 6106

### Casing Program:

Casing String	Est. Depth (ft.)	Hole Size (in.)	Casing Size (in.)	Thread	TOC (ft.)	Stage Tool Or TOL (ft.)	Cmt Cir. Out (bbl.)
Surface	120	13.5	9.625	ST&C	Surface	NA	
Intermediate	3269	8.75	7	ST&C	Surface	NA	
Production -	7614	6.25	4.5	ST&C	3169	NA	

### Casing Properties:

(No Safety Factor Included)

Casing String	Size (in.)	Weight (lb/ft)	Grade	Burst (psi)	Collapse (psi)	Joint St. (1000 lbs.)	Capacity (bbl/ft.)	Drift (in.)
Surface	9.625	32	H-40	3370	1400	254	0.0787	8.845
Intermediate	7	20	K-55	3740	2270	254	0.0405	6.456
Production -	4.5	11.6	J-55	5350	4960	154	0.0155	3.875

### Mud Program

Apx. Interval (ft.)      Mud Type      Mud Weight

0 - SCP	Water/Spud	8.6-9.2
SCP - ICP	Water/LSND	8.6-9.2
ICP - ICP2	Gas/Air Mist	NA
ICP2 - TD	LSND	8.6 - 9.2

### Recommended Mud Properties Prio Cementing:

PV <20  
 YP <10  
 Fluid Loss <15

### Cementing Program:

	Surface	Intermediate	Production
Excess %, Lead	100	75	40
Excess %, Tail	NA	0	40
BHST (est deg. F)	75	120	183
Special Instructions	1,6,7	1,6,8	2,4,6

1. Do not wash pumps and lines.
2. Wash pumps and lines.
3. Reverse out
4. Run Blend Test on Cement
5. Record Rate, Pressure, and Density on 3.5" disk
6. Confirm densitometer with pressurized mud scales
7. 1" cement to surface if cement is not circulated.
8. If cement is not circulated to surface, run temp. survey 10-12 hr. after landing plug.

### Notes:

\*Do not wash up on top of plug. Wash lines before displacing production cement job to minimize drillout.

### Surface:

Preflush      20 bbl.      FreshWater  
 Slurry 1      92 sx Class C Cement      117 cuft  
 TOC@Surface      + 2% CaCl2 (accelerator)  
 0.4887 cuft/ft OH

### Slurry Properties:

Density (lb/gal)	Yield (ft3/sk)	Water (gal/sk)
Slurry 1      15.2	1.27	5.8

### Casing Equipment:

9-5/8", 8R, ST&C  
 1 Guide Shoe  
 1 Top Wooden Plug  
 1 Autofill insert float valve  
 Centralizers, 1 per joint except top joint  
 1 Stop Ring  
 1 Thread Lock Compound

District I  
PO Box 1980, Hobbs NM 88241-1980  
District II  
PO Drawer KK, Artesia, NM 87211-0719  
District III  
1000 Rio Brazos Rd., Aztec, NM 87410  
District IV  
PO Box 2088, Santa Fe, NM 87504-2088

State of New Mexico  
Energy, Minerals & Natural Resources Department

OIL CONSERVATION DIVISION  
PO Box 2088  
Santa Fe, NM 87504-2088

Form C-102  
Revised February 21, 1994  
Instructions on back  
Submit to Appropriate District Office  
State Lease - 4 Copies  
Fee Lease - 3 Copies  
☐ AMENDED REPORT

2005 AUG 15 PM 1 28

WELL LOCATION AND ACREAGE DEDICATION PLAT

<sup>1</sup> API Number 30-045-32610	<sup>2</sup> Pool Code 71599; 72319	<sup>3</sup> Pool Name Basin Dakota; Blanco Mesaverde
<sup>4</sup> Property Code	<sup>5</sup> Property Name Schneider Gas Com	<sup>6</sup> Well Number # 1M
<sup>7</sup> OGRID No.	<sup>8</sup> Operator Name BP AMERICA PRODUCTION COMPANY	<sup>9</sup> Elevation 6106

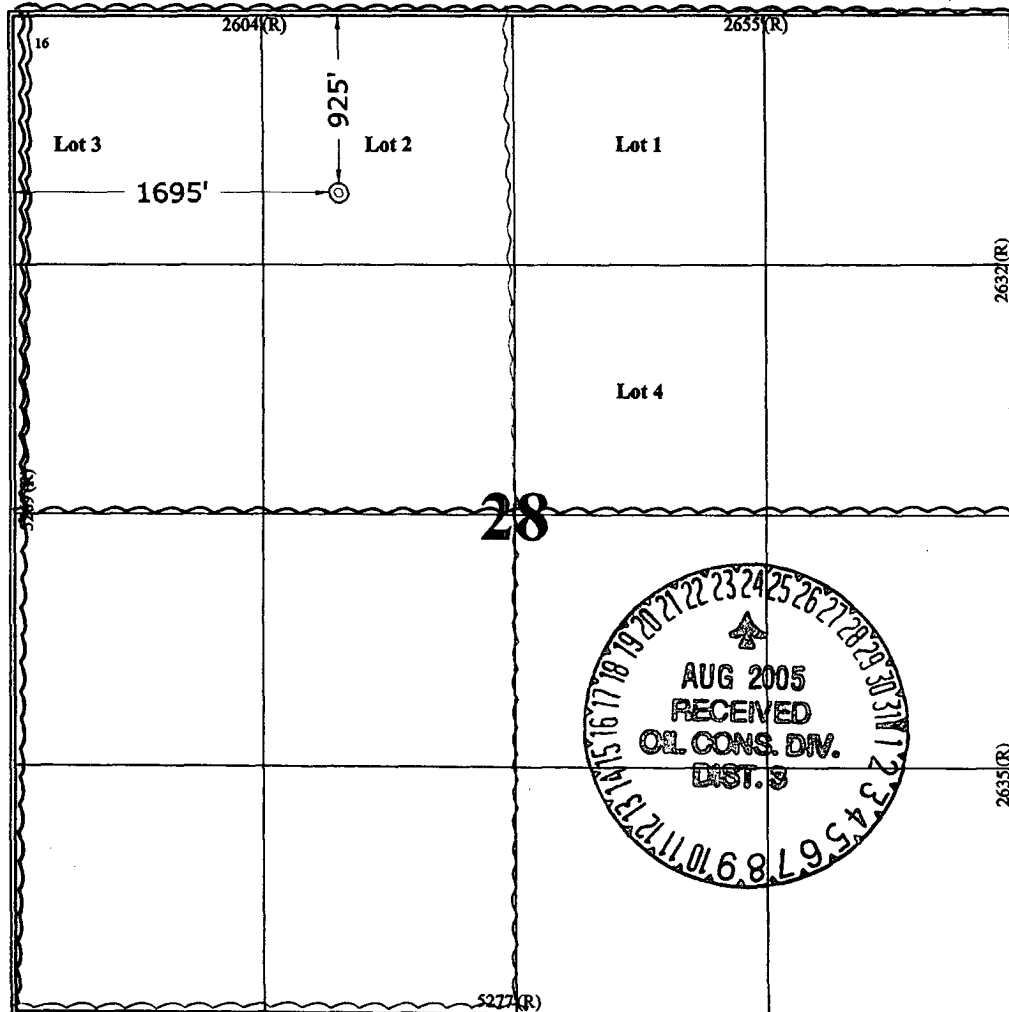
<sup>10</sup> Surface Location

UL or Lot No. C (Lot 2)	Section 28	Township 32 N	Range 10 W	Lot Idn	Feet from the 925	North/South line NORTH	Feet from the 1695	East/West line WEST	County SAN JUAN
----------------------------	---------------	------------------	---------------	---------	----------------------	---------------------------	-----------------------	------------------------	--------------------

<sup>11</sup> Bottom Hole Location If Different From Surface

<sup>12</sup> UL or lot no. DA 317.94 MV 318.43	<sup>13</sup> Section	<sup>14</sup> Township	<sup>15</sup> Range	<sup>16</sup> Lot Idn	<sup>17</sup> Feet from the	<sup>18</sup> North/South line	<sup>19</sup> Feet from the	<sup>20</sup> East/West line	<sup>21</sup> County

NO ALLOWABLE WILL BE ASSIGNED TO THIS COMPLETION UNTIL ALL INTERESTS HAVE BEEN CONSOLIDATED  
OR A NON-STANDARD UNIT HAS BEEN APPROVED BY THE DIVISION



<sup>17</sup> OPERATOR CERTIFICATION

I hereby certify that the information contained herein is true and complete to the best of my knowledge and belief.

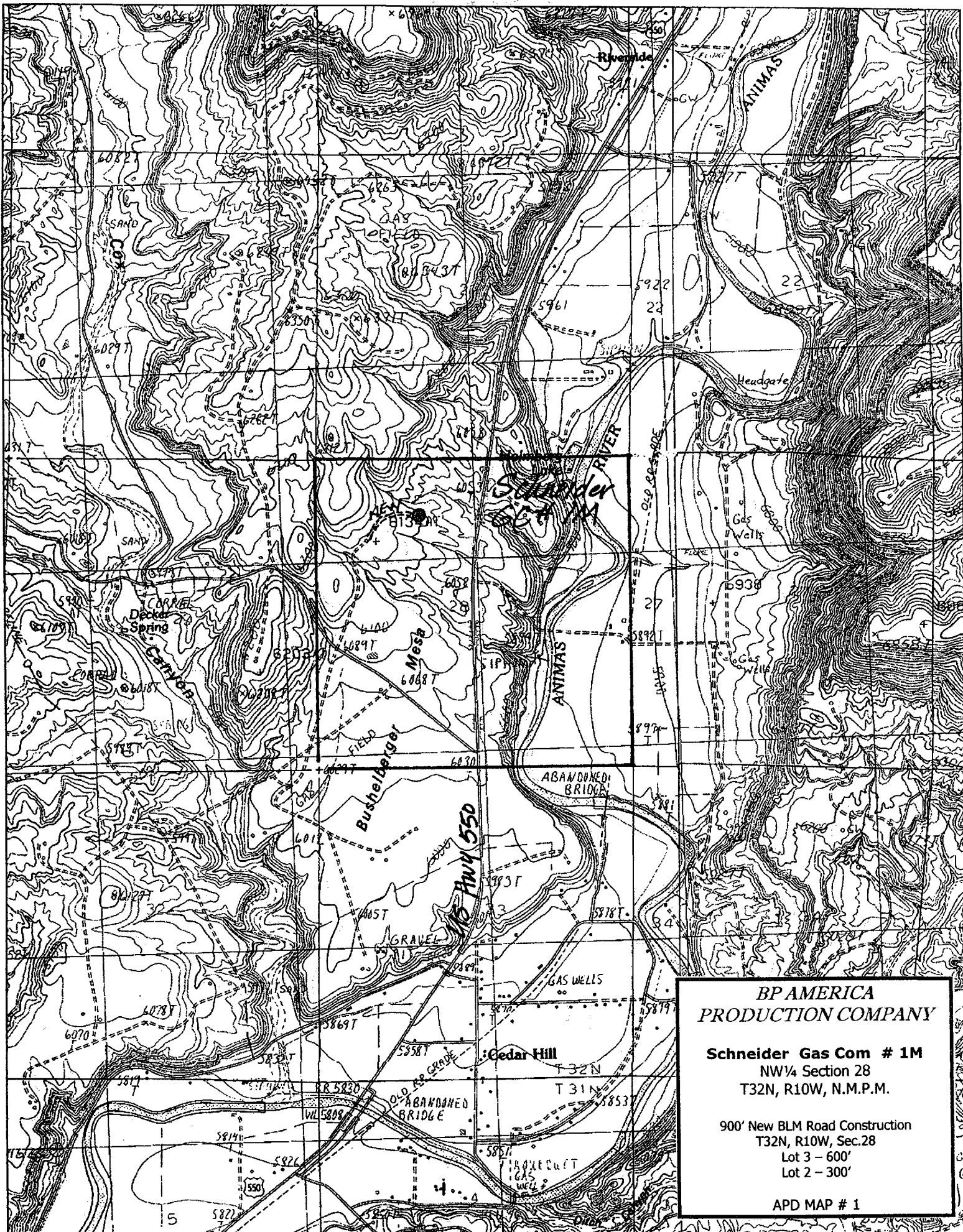
Signature Cherry Hlava
Printed Name Cherry Hlava
Title Regulatory Analyst
Date 8-8-05

<sup>18</sup> SURVEYOR CERTIFICATION

I hereby certify that the well location shown on this plat was plotted from field notes of actual surveys made by me or under my supervision, and that the same is true and correct to the best of my belief.

March 31, 2004

Date of Survey
Signature and Seal of Professional Surveyor
7016
Certificate Number



**BP AMERICA  
PRODUCTION COMPANY**

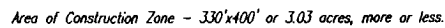
**Schneider Gas Com # 1M**

NW¼ Section 28  
T32N, R10W, N.M.P.M.

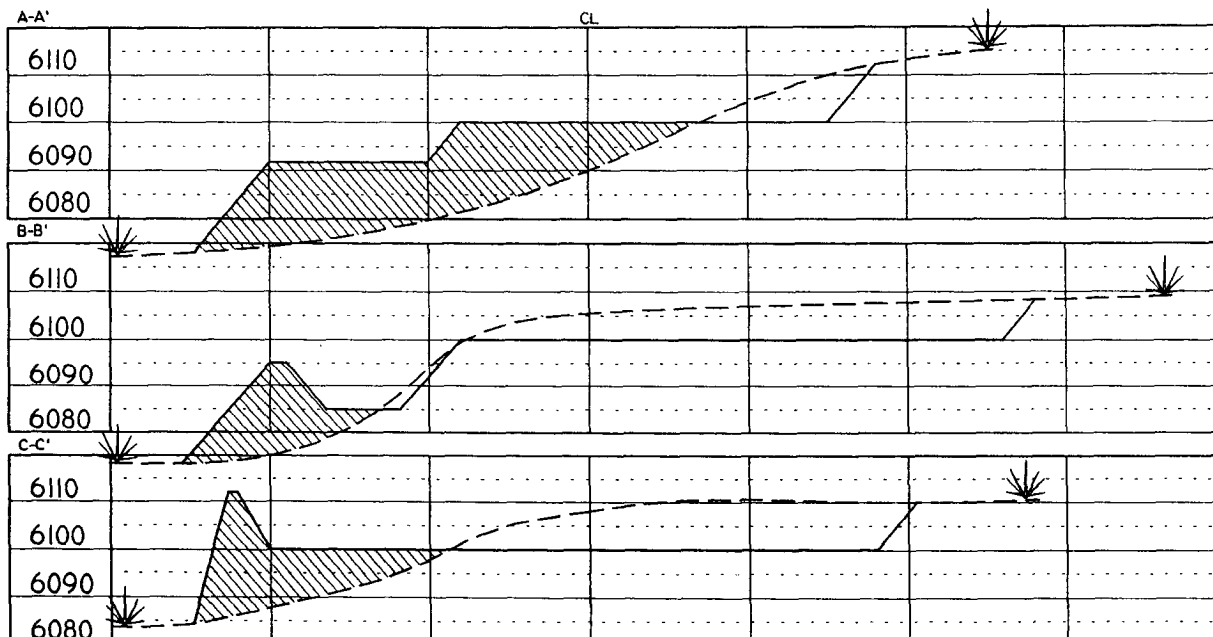
900' New BLM Road Construction  
T32N, R10W, Sec.28  
Lot 3 - 600'  
Lot 2 - 300'

APD MAP # 1

Lat: 36°57'39"  
Long: 107°53'26"



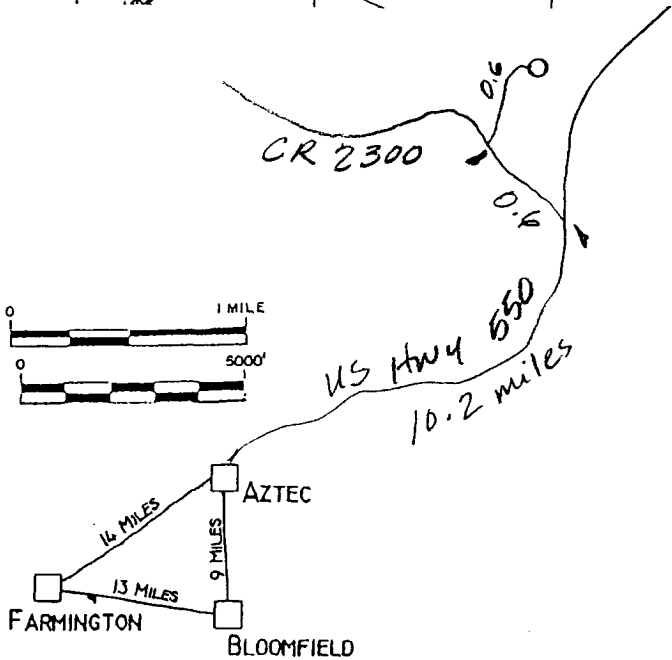
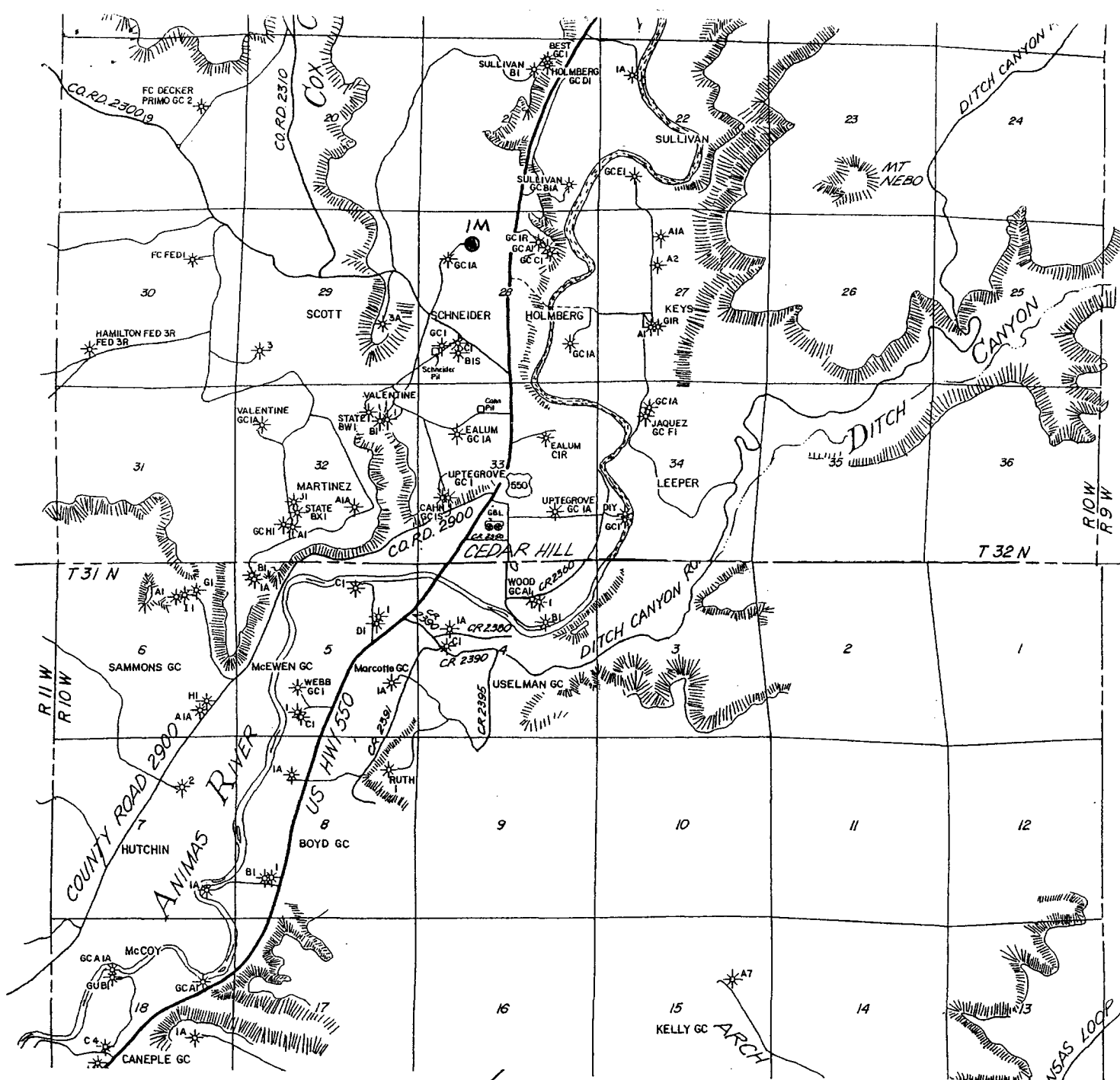
SCALE: 1"=60'-HORIZ.  
1"=40'-VERT.



**NOTE:** Contractor should call One-Call for location of any marked or unmarked buried pipelines or cables on well pad and/or access road at least two (2) working days prior to construction.

Cuts and fills shown are approximate - final finished elevation is to be adjusted so earthwork will balance. Corner stakes are approximate and do not include additional areas needed for slopes and drainages. Final Pad Dimensions are to be verified by Contractor.

VANN SURVEYS  
P. O. Box 1306  
Farmington, NM



**LAT: 36°57.7'**

**LONG: 107°53.4'**

**BP AMERICA PRODUCTION COMPANY**

**Schneider Gas Com # 1M**

**NW¼ Sec. 28, T32N, R11W, NMPM**

**RAIL POINT:**

**MUD POINT:**

**CEMENT POINT:**