

Submit 1 Copy To Appropriate District Office
District I - (575) 393-6161
1625 N. French Dr., Hobbs, NM 88240
District II - (575) 748-1283
811 S. First St., Artesia, NM 88210
District III - (505) 334-6178
1000 Rio Brazos Rd., Aztec, NM 87410
District IV - (505) 476-3460
1220 S. St. Francis Dr., Santa Fe, NM 87505

State of New Mexico
Energy, Minerals and Natural Resources

OIL CONSERVATION DIVISION
1220 South St. Francis Dr.
Santa Fe, NM 87505

~~AMENDED~~

Form C-103

Revised August 1, 2011

WELL API NO. 30-045-30540	
5. Indicate Type of Lease STATE <input type="checkbox"/> FEE <input checked="" type="checkbox"/>	
6. State Oil & Gas Lease No.	
7. Lease Name or Unit Agreement Name LM Barton	
8. Well Number 1B	
9. OGRID Number 131994	
10. Pool name or Wildcat Basin Fruitland Coal	
SUNDRY NOTICES AND REPORTS ON WELLS (DO NOT USE THIS FORM FOR PROPOSALS TO DRILL OR TO DEEPEN OR PLUG BACK TO A DIFFERENT RESERVOIR. USE "APPLICATION FOR PERMIT" (FORM C-101) FOR SUCH PROPOSALS.)	
1. Type of Well: Oil Well <input type="checkbox"/> Gas Well <input checked="" type="checkbox"/> Other	
2. Name of Operator Four Star Gas & Oil Company	
3. Address of Operator Attn: Regulatory Specialist 332 Road 3100 Aztec, New Mexico 87410	
4. Well Location Unit Letter <u>D</u> : <u>660</u> feet from the <u>North</u> line and <u>960</u> feet from the <u>West</u> line Section <u>12</u> Township <u>30N</u> Range <u>12W</u> NMPM San Juan County	
11. Elevation (Show whether DR, RKB, RT, GR, etc.) GL 5670'	

12. Check Appropriate Box to Indicate Nature of Notice, Report or Other Data

NOTICE OF INTENTION TO:

PERFORM REMEDIAL WORK ☐ PLUG AND ABANDON ☐
TEMPORARILY ABANDON ☐ CHANGE PLANS ☐
PULL OR ALTER CASING ☐ MULTIPLE COMPL ☐
DOWNHOLE COMMINGLE ☐

SUBSEQUENT REPORT OF:

REMEDIAL WORK ☐ ALTERING CASING ☐
COMMENCE DRILLING OPNS. ☐ P AND A ☐
CASING/CEMENT JOB ☐

OTHER: ☐

OTHER Perforate and fracture ☒

13. Describe proposed or completed operations. (Clearly state all pertinent details, and give pertinent dates, including estimated date of starting any proposed work). SEE RULE 19.15.7.14 NMAC. For Multiple Completions: Attach wellbore diagram of proposed completion or recompletion.

~~Depth of perforation corrected to due to a typographical error on the original workover summary.~~

2/9/2012 Picked up and RIH with 2" JDC to 4257 ft. Recovered piston, unable to retrieve the string. RIH and set a 3 slip stop at 4550 ft POOH and RD slick line unit. ND well head, NU BOPs.
Tested BOP's to 250 psi low 1500 high, also tested TIW valves 250 psi low 1500 psi high. Was unable to get a good high test on the BOP's, had to call out for new 1502 3" connection.

2/10/2012 See attached page for further information.

RCVD NOV 2 '12
OIL CONS. DIV.
DIST. 3

Spud Date:

10/21/2001

Rig Release Date:

I hereby certify that the information above is true and complete to the best of my knowledge and belief.

SIGNATURE: April E. Pohl TITLE: Regulatory Specialist DATE: 10/30/12

Type or print name April E. Pohl E-mail address: April.Pohl@chevron.com PHONE: 505-333-1941

For State Use Only

APPROVED BY: Bob Pohl TITLE: Deputy Oil & Gas Inspector, District #3 DATE: 11/21/12

Conditions of Approval (if any):

AV

Continued from first page.

- 2/10/2012 RU test truck, tested BOPs 250 psi low, 1500 psi high, good test. RD test truck.
Checked well pressure - 175 psi on casing and 75 psi on tubing. Caliper elevator, killed tubing and casing, pulled the hanger.
POOH with 147 joints of 2 3/8" tubing loaded on tubing float sent for inspection.
Loaded tubing on float, unloaded work string and tally tubing. PU and RIH with 3 3/4" bit, bit sub, scraper, XO back to 2 3/8" work string, (BHA has float installed).
RIH with 95 joints, SWIFN.
- 2/13/2012 Checked well pressure had 170 psi, bled down pressure.
POOH with tubing, LD 33 joints, racked back 31 STD's. Moved equipment to get the wire line truck stopped in.
PU 4.5" TST packer RIH with 1 joint, filled the hole with fluid, set the TST Packer.
Tested the casing to 500 psi low for 5 minutes 3500 psi high for 30 minutes.
Picked up and RIH with guns, shot holes at 2070'. POOH and LD lubricator and guns.
RD wire line.
Closed blind rams and pumped down the casing up the surface casing. pumping at 5 BPM had 400 psi on casing, pumping at 5bbl per min, pump 15 BBL's. Drained pump and lines, SWIFN.
PU lubricator and equipment. PU and RIH with 4.5" CBP set at 2200 ft, POOH with wire line tools and LD equipment.
- 2/14/2012 Checked well pressure had 0 psi, bled down pressure.
Picked up and RIH with cement retainer set at 2050 ft.
RU lines and tested to 3900 psi, good test. Pumped injection test: 1 BPM, 4 psi; 1.5 BPM, 130 psi; 2 BPM, 500 psi; 2.5 BPM, 779 psi; 3.5 BPM, 1073 psi; 4.5 BPM, 1560 psi. Pumped total of 18.5 BBLs of water, ISIP 550 psi.
Mixed cement and pump total of 100 sks: 15.8 psi. total of 23.5 BBLs. Picked up out of cement retainer about 20'; reversed out 20 BBLs, got back 3 BBLs of cement.
RD cement truck and lines and move cement truck off location.
Had to move equipment around to spot in tanks for frac job. Drained pump and lines SWIFN.
- 2/15/2012 Checked well pressure, had 0 psi.
Moved in equipment, spotted in frac tanks. Caliper elevator, RIH and tagged TOC at 2041'. POOH with tubing and LD tools.
RU and RIH with CBL logged from 2041 TOC to Surface had good cement up to 1730'.
RD wire line and moved off location.
Drained lines and pump SWIFN.
Shut down waiting on cement and perf guns.
- 2/16/2012 Operations suspended, waiting on frac crew
- 2/17/2012 PU and RIH with 2-7/8" Power Jet HSD guns, penetration 25.3"; ID 0.38", gram charge 17.6. First run shot at 2015'-2003'. Second run shot 2007'-1997'. POOH and RD wireline 1997'-2015'
- 2/18/2012 Spotted in frac pump and trucks on location.
RU frac irons, lines and pump's for for frac job. Tested lines to 4500 psi, good test.
Started pumping frac job, pumped 110250 lbs of sand downhole. Max treating pressure 2025 psi, Max treating rate (gpm) 25.36. ISIP 624 psi.

RD frac iron and moved off equipment. SWIFN

2/20/2012 Check well, SIWHP - 0 psi, vacuum, open well to flowback tank

RU Hydrawalk, set pipe racks, offload drill collars, tbg, tally tbg, caliper elevators,
RU flowback line

RIH w/ 8 jts, POOH, LD same,

PU & RIH w 3 3/4" mill, PU 3 1/8" Drill Collar - found bad safety clamp, order new.

PU and RIH w 3 3/4" mill, 6 - 3 1/8" DC's, 2 3/8" tbg, Tag @ 1919 on 55 jts, PU Power Swivel

Test lines w/ air, start air and establish circulation at 1000 psi. Start mist @ 10 bwph and 475 psi.

Clean out sand from 1919' to 2042, Drill cement to CICR @ 2050, Pump sweep, Circ clean.

SD air, POOH, LD 3 jts workstring. Secure well, SDFN.

2/21/2012 Check well, SICP - 240 psi, SITP - 0 psi, (float), Open well to flowback tank.

PU and RIH w/ 3 jts 2 3/8" workstring, tag at 2046', 4' fill.

Start air, establish circulation, Start mist at 12 bwph, 1200 cfm air, 500 psi.

Wash 4' sand to CICR @ 2050', Mill on CICR, drilled thru, fell out of cement @ 2056', RIH, retag on Jt # 64 @ 2200' (CBP), Drill out CBP @ 2200, Only partial circulation after drilling out, RIH w/ 3 jts.

Rack back power swivel, PU, Tally and RIH in singles, Tag at 4722' on 144 jts. 13' fill. POOH w/ 45 stands, Secure well, SDFN.

2/22/2012 Check well, SICP - 190 psi, SITP - 0 psi (string float), Open well to flowback tank.

RIH w/ 2 3/8" tbg, Tag @ 4719', 3' additional fill. PU Power Swivel

Start air, Attempting to Establish circ. Would not. Pump sweeps w/ foam, Pump pressure builds to 1000 psi then falls to 800 psi. No circulation. Decision to POOH w/ tbg, land well.

RD PS, POOH w/ tbg. RD Power swivel, POOH, LD 129 jts 2-3/8" workstring.

2/23/2012 Check well, SICP - 180 psi, SITP - 0 psi (string float), Open well to flowback tank

Transfer tbg, offload prod tbg

POOH, LD 29 jts 2 3/8" tbg, LD 6 DC's and mill, transfer prod tbg to racks, tally same

PU & RIH w/ Muleshoe, SN, 2 3/8" prod tbg. Land hangar. Total of Muleshoe (20.46), SN(1.10), 145 jts 2 3/8" J55 (4537.99), 6' pup(6.16), 8' pup (8.08), 10' pup (10.5), 1 jt 2-3/8" (31.26)P, SN at 4607', EOT @ 4628.10

Rig down floor, tongs, ND BOP's, NU WH.

Pump chem treatment down csg, tbg.

2/24/2012 0:00 Check well, SCIP - 170 psi, SITP - 0 psi.

Change out handling equipment, PU & RIH w/ 2 x 1 1/4 x 14 x 14-3 RHAC pump,

Stabilizer bar, 4 - 1 1/4" x 25' Sinker Bars, 4 - 3/4" x 25' rods guided 5/rod, 175 3/4" x 25' rods, Space out w/ 1 - 3/4" x 4' pony rod, 1 1/4" x 22' Polish Rod

Load tbg w/ 2% KCL, Test to 500 psi, Test good. Check pump action w/ pump to 500 psi, good.

RD Pump and lines, leave clean location.



Wellbore Schematic

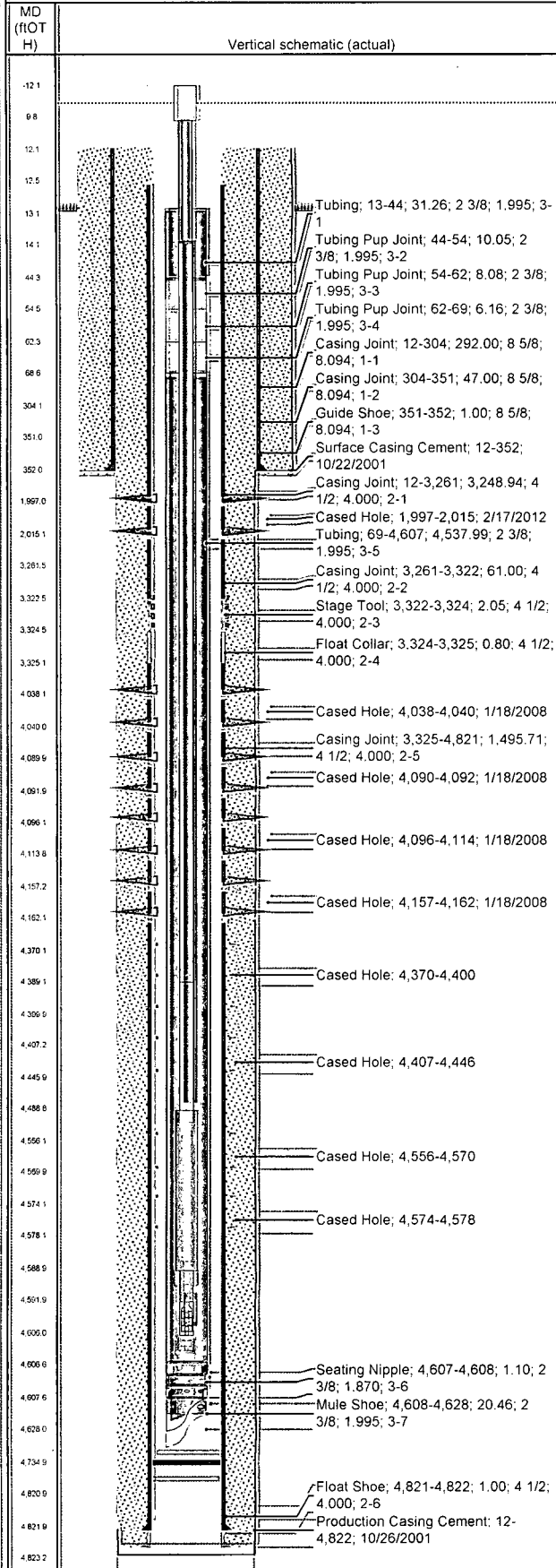
Well Name
LM Barton 1B

Lease
Barton, L.M.

Field Name
Blanco Mesa Verde

Business Unit
Mid-Continent/Alaska

Original Hole, 10/30/2012 1:25:28 PM



Job Details

Job Category	Start Date	Release Date
Major Rig Work Over (MRWO)	2/9/2012	2/24/2012

Casing Strings

Csg Des	OD (in)	Wt/Len (lb/ft)	Grade	Top Thread	Set Depth (MD) (ftOTH)
Surface	8 5/8	24.00	K-55		352
Production Casing	4 1/2	11.60	J-55		4,822

Tubing Strings

Tubing - Production set at 4,628.1ftOTH on 2/23/2012 11:00

Tubing Description		Run Date		String Length (ft)		Set Depth (ftOTH)	
Tubing - Production		2/23/2012		4,615.10		4,628.1	
Item Des	Jts	OD (in)	Wt (lb/ft)	Grade	Len (ft)	Btm (ftOTH)	
Tubing	1	2 3/8	4.70	J-55	31.26	44.3	
Tubing Pup Joint	1	2 3/8	4.70	J-55	10.05	54.3	
Tubing Pup Joint	1	2 3/8	4.70	J-55	8.08	62.4	
Tubing Pup Joint	1	2 3/8	4.70	J-55	6.16	68.6	
Tubing	145	2 3/8	4.70	J-55	4,537.99	4,606.5	
Seating Nipple		2 3/8	4.70	J-55	1.10	4,607.6	
Mule Shoe	1	2 3/8	4.70	J-55	20.46	4,628.1	

Rod Strings

Long String on 2/24/2012 08:00

Rod Description		Run Date		String Length (ft)		Set Depth (ftOTH)	
Long String		2/24/2012		4,618.00		4,606.0	
Item Des	Jts	OD (in)	LWt (lb/ft)	Grade	Len (ft)	Btm (ftOTH)	
Polished Rod		1 1/4			22.00	10.0	
Pony Rod		3/4			4.00	14.0	
Sucker Rod	175	3/4	1.63	D	4,375.00	4,389.0	
Sucker Rod; 2" guided 5/per	4	3/4	1.63	D	100.00	4,489.0	
Sinker Bar	4	1 1/4	4.17		100.00	4,589.0	
Stabilizer bar		3/4			3.00	4,592.0	
2 x 1-1/4 x 14 x 14-3 RHAC		3/4			14.00	4,606.0	

Perforations

Date	Top (ftOTH)	Btm (ftOTH)	Shot Dens (shots/ft)	Entered Shot Total	Zone & Completion
2/17/2012	1-1997.0	2-2015.0	4-0	22	Fruitland-Goal-Upper-Original Hole
1/18/2008	4-038.0	4-040.0	2-0		Menefee-Original-Hole
1/18/2008	4-090.0	4-092.0	2-0		Menefee-Original-Hole
1/18/2008	4-096.0	4-114.0	2-0		Menefee-Original-Hole
1/18/2008	4-157.0	4-162.0	2-0		Menefee-Original-Hole
	4-370.0	4-400.0	2-0	22	Point-lookout-Original-Hole
	4-407.0	4-446.0	2-0	22	Point-lookout-Original-Hole
	4-556.0	4-570.0	2-0	22	Point-lookout-Original-Hole
	4-574.0	4-578.0	2-0	23	Point-lookout-Original-Hole

Other Strings

Run Date	Pull Date	Set Depth (ftOTH)	Com