

(August 2007)

UNITED STATES

DEPARTMENT OF THE INTERIOR
BUREAU OF LAND MANAGEMENT

FORM APPROVED

OMB No. 1004-0137

Expires: July 31, 2010

5. Lease Serial No.

NMSF-080180-A

6. If Indian, Allottee or Tribe Name

NOV 19 2012

SUDDRY NOTICES AND REPORTS ON WELLS

Do not use this form for proposals to drill or to re-enter an
Farmington abandoned well. Use Form 3160-3 (APD) for such proposals.

Bureau of Land Management SUBMIT IN TRIPLICATE - Other instructions on page 2.

1. Type of Well

☐ Oil Well☒ Gas Well☐ Other

2. Name of Operator

Burlington Resources Oil & Gas Company LP

3a. Address

PO Box 4289, Farmington, NM 87499

3b. Phone No. (include area code)

(505) 326-9700

7. If Unit of CA/Agreement, Name and/or No.

San Juan 30-6 Unit

8. Well Name and No.

San Juan 30-6 Unit 441S

9. API Well No.

30-039-27643

4. Location of Well (Footage, Sec., T., R., M., or Survey Description)

Surface Unit I (NESE), 1840' FSL & 1255' FEL, Sec. 31, T30N, R6W

10. Field and Pool or Exploratory Area

Basin Fruitland Coal

11. Country or Parish, State

Rio Arriba, New Mexico

12. CHECK THE APPROPRIATE BOX(ES) TO INDICATE NATURE OF NOTICE, REPORT OR OTHER DATA

TYPE OF SUBMISSION

TYPE OF ACTION

☒ Notice of Intent☐ Acidize☐ Deepen☐ Production (Start/Resume)☐ Water Shut-Off☐ Subsequent Report☐ Alter Casing☐ Fracture Treat☐ Reclamation☐ Well Integrity☐ Final Abandonment Notice☐ Casing Repair☐ New Construction☐ Recomplete☐ Other☐ Change Plans☒ Plug and Abandon☐ Temporarily Abandon☐ Convert to Injection☐ Plug Back☐ Water Disposal

13. Describe Proposed or Completed Operation: Clearly state all pertinent details, including estimated starting date of any proposed work and approximate duration thereof.

If the proposal is to deepen directionally or recompleat horizontally, give subsurface locations and measured and true vertical depths of all pertinent markers and zones.

Attach the bond under which the work will be performed or provide the Bond No. on file with BLM/BIA. Required subsequent reports must be filed within 30 days

following completion of the involved operations. If the operation results in a multiple completion or recompleat in a new interval, a Form 3160-4 must be filed once

Testing has been completed. Final Abandonment Notices must be filed only after all requirements, including reclamation, have been completed and the operator has

determined that the site is ready for final inspection.)

Burlington Resources requests permission to P&A the subject well per the attached procedure, current and proposed wellbore schematics.

* Add inside oc plug from 3771' - 3724'

RCVD NOV 26 '12

Notify NMOCD 24 hrs
prior to beginning
operations

OIL CONS. DIV.

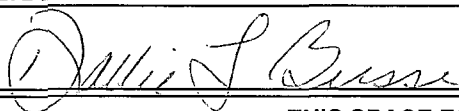
DIST. 3

14. I hereby certify that the foregoing is true and correct. Name (Printed/Typed)

Dollie L. Busse

Title Staff Regulatory Technician

Signature



Date

11/19/12

THIS SPACE FOR FEDERAL OR STATE OFFICE USE

Approved by

Original Signed: Stephen Mason

Title

Date

NOV 20 2012

Conditions of approval, if any, are attached. Approval of this notice does not warrant or certify that the applicant holds legal or equitable title to those rights in the subject lease which would entitle the applicant to conduct operations thereon.

Office

Title 18 U.S.C. Section 1001 and Title 43 U.S.C. Section 1212, make it a crime for any person knowingly and willfully to make to any department or agency of the United States any false, fictitious or fraudulent statements or representations as to any matter within its jurisdiction.

(Instruction on page 2)

NMOCD

ConocoPhillips
SAN JUAN 30-6 UNIT 441S
Expense - P&A

Lat 36° 46' 1.441" N

Long 107° 29' 55.979" W

PROCEDURE

This project requires a NMOCD C-144 CLEZ Closed-Loop System Permit for the use of an A-Plus steel tank to handle waste fluids circulated from the well and cement wash up.

1. Hold pre-job safety meeting. Comply with all NMOCD, BLM, and COPC safety and environmental regulations. Test rig anchors prior to moving in rig.
2. MIRU work over rig. Check casing, tubing, and bradenhead pressures and record them in Wellview.
3. When an existing primary valve (i.e. casing valve) is to be used, the existing piping should be removed and replaced with the appropriate piping for the intended operation.
4. RU blow lines from casing valves and begin blowing down casing pressure. Unseat pump, kill well with water, as necessary, and at least pump tubing capacity of water down tubing.
5. TOOH with 3/4" rods; LD rods.
6. ND wellhead and NU BOPE. Pressure and function test BOP. PU and remove tubing hanger.
7. TOOH with 2-3/8", 4.7#, J-55, EUE tubing (per pertinent data sheet).

Rods:	Yes	Size:	3/4"	Length:	3738'
Tubing:	Yes	Size:	2-3/8"	Length:	3759'

Round trip 7" casing scraper top of liner (3485') or as deep as possible.

All cement volumes use 100% excess outside pipe and 50' excess inside pipe. The stabilizing wellbore fluid will be 8.3 ppg, sufficient to balance all exposed formation pressures. All cement will be ASTM Type II mixed at 15.6 ppg with a 1.18 cf/sk yield. Per CBL, cement volumes may change.

8. Plug 1 (Fruitland formation top, Open Hole, Intermediate Shoe, Liner Top, 3245-3440', 48 Sacks Class B Cement)
RIH and set CR for 7", 20#, J-55 casing at 3440'. Load casing and circulate clean. Pressure test tubing to 1000 psi. Pressure test casing to 800 psi. If casing does not test, then spot or tag subsequent plugs as appropriate. Run CBL from 3245' to surface. Mix 48 sx of Class B cement and spot plug inside casing to isolate the Fruitland formation top, open hole, intermediate shoe and liner top. PUH.

3014 2684

9. Plug 2 (Ojo Alamo and Kirtland formation tops, ~~2785-3007'~~ 53 Sacks Class B Cement)
Mix 53 sx Class B cement and spot balance plug inside casing to isolate the Ojo Alamo and Kirtland formation tops. PUH

10. Plug 3 (Nacimiento formation top, 1610-1710', 29 Sacks Class B Cement)
Mix 29 sx Class B cement and spot balance plug inside casing to isolate the Nacimiento formation to. PUH

11. Plug 4 (Surface Shoe, 0-183', 45 Sacks Class B Cement)
Attempt to pressure test the bradenhead annulus to 300 PSI; note the volume to load. If the BH annulus holds pressure, then establish circulation out casing valve with water. Mix 45 sx cement and spot a balanced plug inside casing from 183' to surface, circulate good cement out casing valve. TOH and LD tubing. Shut well in and WOC. If the BH annulus does not test, perforate at the appropriate depth and attempt to circulate cement to surface filling the casing from 183' and the annulus from the squeeze holes to surface. Shut in well and WOC.

12. Nipple down BOP and cut off casing below the casing flange. Install P&A marker with cement to comply with regulations. Rig down, move off location, cut off anchors, and restore location.

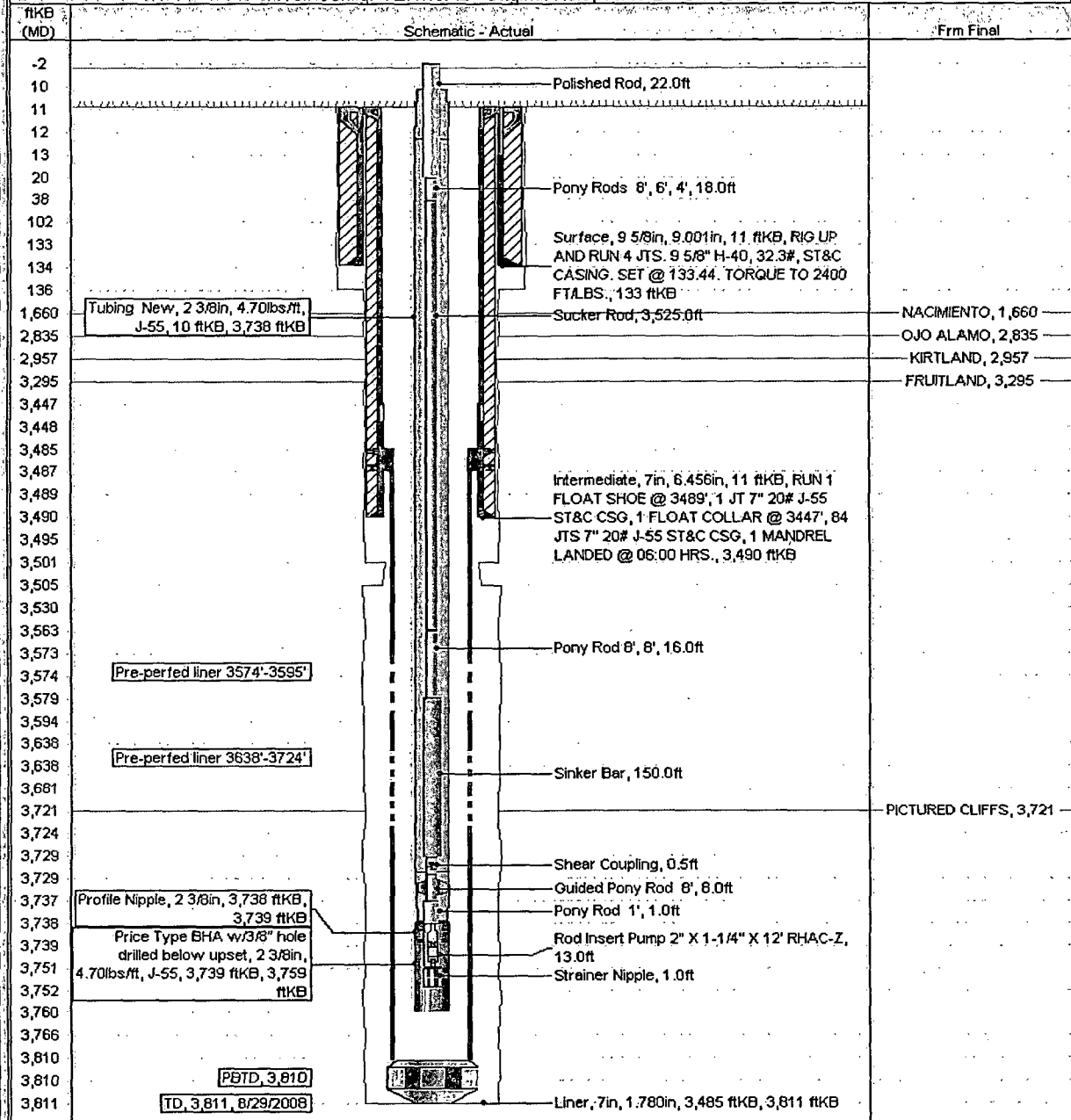
Current Schematic - Version 1

ConocoPhillips

Well Name: SAN JUAN 30-6 UNIT #441S

APIT Unit 3003927643	State Legal Location 031-030N-006W-1	Field Name BASIN FRUITLAND COAL	License No.	State/Province NEW MEXICO	Well Configuration Type VERTICAL	Edit
Ground Elevation (ft) 6,839.00	Original KB/RT Elevation (ft) 6,850.00	KB-Grnd Offset (ft) 11.00	KB-Casing Flange Offset (ft)	KB-Tubing Hanger Offset (ft)		

Well Config: VERTICAL - Original Hole, 11/13/2012 11:57:43 AM



ConocoPhillips

Proposed Schematic

Well Name: SAN JUAN 30-6 UNIT #441S

API/UNI	Surface Legal Location	Field Name	License No.	State/Province	Well Configuration Type	Edit
3003927643	031-030N-006W-J	Basin Fruitland Coal		NEW MEXICO	VERTICAL	
Ground Elevation, ft	Original Depth, ft	11-Grout Depth, ft	11-Casing Floor, Depth, ft	11-Testing Height, Depth, ft		
6,839.00	6,850.00	11'00'				

Well Config: VERTICAL - Original Hole, 1/1/2020

ftKB (MD)	ftKB (TVD)	Schematic - Actual	Form Final
-2			
10			
11			
12			
13			
20			
38			
102	102		
133	133		
134	134		
136	136		
183	183		
1,610	1,610		
1,660	1,660		
1,710	1,710		
2,785	2,785		
2,835	2,835		
2,957	2,957		
3,007	3,006		
3,245	3,245		
3,295	3,294		
3,440	3,439		
3,441	3,440		
3,447	3,447		
3,448	3,447		
3,485	3,485		
3,487	3,487		
3,489	3,488		
3,490	3,489		
3,495	3,495		
3,501	3,501		
3,505			
3,530			
3,563			
3,573			
3,574			
3,579			
3,594			
3,638			
3,638			
3,681			
3,721			
3,724			
3,729			
3,729			
3,737			
3,738			
3,739			
3,751			
3,752			
3,760			
3,766			
3,810			
3,810			
3,811			

Surface Casing Cement, 11-133, 9/5/2007, PUMP 10 BBL H2O, DUMP 59 SXS, (18.8 BBL SLURRY) TYPE II CEMENT WITH 20% FLYASH @ 14.5 PPG INTO CASING, DROP PLUG AND DISPLACE WITH 6.8 BBL H2O. CIRCULATED 3 BBL CEMENT TO SURFACE.

Surface, 9 5/8in, 9,001in, 11 ftKB, RIG UP AND RUN 4 JTS, 9 5/8" H:40, 32.3#, ST&C CASING, SET @ 133.44. TORQUE TO 2400 FT/LBS., 133 ftKB

Plug #4, 11-183, 1/1/2020, Mix 45 sxs of Class B cement and spot balance plug inside casing from 183' to surface.

Plug #3, 1,610-1,710, 1/1/2020, Mix 29 sxs of Class B cement and spot balance plug inside casing to isolate the Nacimiento formation top.

Plug #2, 2,785-3,007, 1/1/2020, Mix 53 sxs of Class B cement and spot balance plug inside casing to isolate the Ojo Alamo and Kirtland formation tops.

Plug #1, 3,245-3,440, 1/1/2020, Mix 48 sxs of Class B cement and spot plug inside casing to isolate the Fruitland formation top, Open Hole, Intermediate shoe, and Liner top.

7" CSG, 11-3,490, 6/17/2008, CMT W/ 10 BBLs GEL WATER, 2 BBLs FW, 10 BBLs (19sks) SCVGR @ 11.0#, 177 BBLs (466sks) LEAD @ 12.1#, 12 BBLs (50sks) TAIL @ 14.6#, DISP W/ 10 BBLs SUGAR WATER, 130 BBLs FW, CIRC 37 BBLs CMT TO PIT, TOP RUBBER STYLE PLUG DOWN @ 19:00 HRS.

Intermediate, 7in, 6,456in, 11 ftKB, RUN 1 FLOAT SHOE @ 3489', 1 JT 7" 20# J-55 ST&C CSG, 1 FLOAT COLLAR @ 3447', 84 JTS 7" 20# J-55 ST&C CSG, 1 MANDREL LANDED @ 06:00 HRS., 3,490 ftKB

Cement Retainer, 3,440-3,441

Pre-perfed liner 3574'-3595'

Pre-perfed liner 3638'-3724'

PBTD, 3,810

ID, 3,811, 8/23/2008

Liner, 7in, 1,780in, 3,485 ftKB, 3,811 ftKB

NACIMIENTO, 1,660

OJO ALAMO, 2,835

KIRTLAND, 2,957

FRUITLAND, 3,295

PICTURED CLIFFS, 3,721

**UNITED STATES DEPARTMENT OF THE INTERIOR
BUREAU OF LAND MANAGEMENT
FARMINGTON DISTRICT OFFICE
6251 COLLEGE BLVD.
FARMINGTON, NEW MEXICO 87402**

Attachment to notice of
Intention to Abandon:

Re: Permanent Abandonment
Well: 441S San Juan 30-6 Unit

CONDITIONS OF APPROVAL

1. Plugging operations authorized are subject to the attached "General Requirements for Permanent Abandonment of Wells on Federal and Indian Lease."
2. Farmington Office is to be notified at least 24 hours before the plugging operations commence (505) 564-7750.
3. The following modifications to your plugging program are to be made:
 - a) Place the Kirtland/Ojo Alamo plug from 3014' - 2684'.
 - b) Place the Nacimiento plug from 1551' - 1451'.
 - c) You are required to have H2S monitoring equipment and personnel on location during plugging operations.

You are also required to place cement excesses per 4.2 and 4.4 of the attached General Requirements.

Office Hours: 7:45 a.m. to 4:30 p.m.