

RECEIVED

Form 3160-5
(August 2007)

UNITED STATES
DEPARTMENT OF THE INTERIOR
BUREAU OF LAND MANAGEMENT

DEC 18 2012

FORM APPROVED
OMB No. 1004-0137
Expires: July 31, 2010

Farmington Field
Bureau of Land Management

5. Lease Serial No.

SF-078244

SUNDRY NOTICES AND REPORTS ON WELLS
Do not use this form for proposals to drill or to re-enter an
abandoned well. Use Form 3160-3 (APD) for such proposals.

6. If Indian, Allottee or Tribe Name

SUBMIT IN TRIPLICATE - Other instructions on page 2.

7. If Unit of CA/Agreement, Name and/or No.

1. Type of Well

☐ Oil Well

☒ Gas Well

☐ Other

8. Well Name and No.

Taliaferro 7

2. Name of Operator

Burlington Resources Oil & Gas Company LP

9. API Well No.

30-045-24763

3a. Address

PO Box 4289, Farmington, NM 87499

3b. Phone No. (include area code)

(505) 326-9700

10. Field and Pool or Exploratory Area

Blanco Mesaverde

4. Location of Well (Footage, Sec., T., R., M., or Survey Description)

Surface Unit L (NWSW), 1580' FSL & 1010' FWL, Sec. 29, T31N, R12W

11. Country or Parish, State

Rio Arriba, New Mexico

12. CHECK THE APPROPRIATE BOX(ES) TO INDICATE NATURE OF NOTICE, REPORT OR OTHER DATA

TYPE OF SUBMISSION	TYPE OF ACTION			
<input checked="" type="checkbox"/> Notice of Intent	<input type="checkbox"/> Acidize	<input type="checkbox"/> Deepen	<input type="checkbox"/> Production (Start/Resume)	<input type="checkbox"/> Water Shut-Off
<input type="checkbox"/> Subsequent Report	<input type="checkbox"/> Alter Casing	<input type="checkbox"/> Fracture Treat	<input type="checkbox"/> Reclamation	<input type="checkbox"/> Well Integrity
<input type="checkbox"/> Final Abandonment Notice	<input type="checkbox"/> Casing Repair	<input type="checkbox"/> New Construction	<input type="checkbox"/> Recomplete	<input type="checkbox"/> Other
	<input type="checkbox"/> Change Plans	<input checked="" type="checkbox"/> Plug and Abandon	<input type="checkbox"/> Temporarily Abandon	
	<input type="checkbox"/> Convert to Injection	<input type="checkbox"/> Plug Back	<input type="checkbox"/> Water Disposal	

13. Describe Proposed or Completed Operation: Clearly state all pertinent details, including estimated starting date of any proposed work and approximate duration thereof. If the proposal is to deepen directionally or recompleat horizontally, give subsurface locations and measured and true vertical depths of all pertinent markers and zones. Attach the bond under which the work will be performed or provide the Bond No. on file with BLM/BIA. Required subsequent reports must be filed within 30 days following completion of the involved operations. If the operation results in a multiple completion or recompleat in a new interval, a Form 3160-4 must be filed once Testing has been completed. Final Abandonment Notices must be filed only after all requirements, including reclamation, have been completed and the operator has determined that the site is ready for final inspection.)

Burlington Resources requests permission to P&A the subject well per the attached procedure, current and proposed wellbore schematics.

RCVD DEC 28 '12
OIL CONS. DIV.
DIST. 3

14. I hereby certify that the foregoing is true and correct. Name (Printed/Typed)

Dollie L. Busse

Title **Staff Regulatory Technician**

Signature

Dollie L. Busse

Date

12/18/12

THIS SPACE FOR FEDERAL OR STATE OFFICE USE

Approved by

Original Signed: Stephen Mason

Title

Date **DEC 21 2012**

Conditions of approval, if any, are attached. Approval of this notice does not warrant or certify that the applicant holds legal or equitable title to those rights in the subject lease which would entitle the applicant to conduct operations thereon.

Office

Title 18 U.S.C. Section 1001 and Title 43 U.S.C. Section 1212, make it a crime for any person knowingly and willfully to make to any department or agency of the United States any false, fictitious or fraudulent statements or representations as to any matter within its jurisdiction.

(Instruction on page 2)

NMOCD IV

ConocoPhillips
TALIAFERRO 7
Expense - P&A

Lat 36° 52' 3.036" N

Long 108° 7' 32.808" W

PROCEDURE

This project requires a NMOCD C-144 CLEZ Closed-Loop System Permit for the use of an A-Plus steel tank to handle waste fluids circulated from the well and cement wash up.

1. Hold pre-job safety meeting. Comply with all NMOCD, BLM, and COPC safety and environmental regulations. Test rig anchors prior to moving in rig.
2. MIRU work over rig. Check casing, tubing, and bradenhead pressures and record them in Wellview.
3. When an existing primary valve (i.e. casing valve) is to be used, the existing piping should be removed and replaced with the appropriate piping for the intended operation.
4. RU blow lines from casing valves and begin blowing down casing pressure. Kill well with water, as necessary, and at least pump tubing capacity of water down tubing.
5. ND wellhead and NU BOPE. Pressure and function test BOP. PU and remove tubing hanger.
6. TOOH with tubing (per pertinent data sheet).

Tubing: Yes **Size:** 2-3/8" **Set Depth:** 4710'

Round trip 4-1/2" watermelon mill to top Mesa Verde perforation @ 4566' or as deep as possible.

All cement volumes use 100% excess outside pipe and 50' excess inside pipe. The stabilizing wellbore fluid will be 8.3 ppg, sufficient to balance all exposed formation pressures. All cement will be ASTM Type II mixed at 15.6 ppg with a 1.18 cf/sk yield.

3784

7. Plug 1 (Mesa Verde perforations and formation top, ~~3885-4516'~~ 51 Sacks Class B Cement)

PU and RIH with CR for 4-1/2", 11.6#, K-55 casing and set at 4516'. Load casing with water and attempt to establish circulation. Pressure test tubing to 1000 psi. Pressure test casing to 800 psi. If casing does not test, spot and tag subsequent plugs as necessary. Run a CBL from top of CR (4516') to Surface to confirm cement tops. Contact engineer with new TOC. Mix 51 sxs Class B cement and spot a plug inside the casing above CR to isolate the Mesa Verde perforations and formation top. PUH.

3050 3350

8. Plug 2 (Chacra, ~~3300-3400'~~ 12 Sacks Class B Cement)

Mix 12 sxs Class B cement and spot a balanced cement plug inside casing to isolate the Chacra formation top. PUH.

9. Plug 3 (Pictured Cliffs, 2203-2303', 12 Sacks Class B Cement)

Mix 12 sxs Class B cement and spot a balanced cement plug inside casing to isolate the Pictured Cliffs formation top. PUH.

1929 1829

10. Plug 4 (Fruitland, ~~1590-1690'~~ 12 Sacks Class B Cement)

Mix 12 sxs Class B cement and spot a balanced cement plug inside casing to isolate the Fruitland formation top. PUH.

11. Plug 5 (Kirtland, Ojo Alamo, and Surface Plug, 0-815', 66 Sacks Class B Cement)

Connect the pump line to the bradenhead valve and attempt to pressure test the BH annulus to 300 PSI; note the volume to load. If the BH annulus holds pressure, then establish circulation out casing valve with water. Mix 66 sxs Class B cement and spot a balanced plug inside the casing from 815' to surface, circulate good cement out casing valve. TOH and LD tubing. Shut well in and WOC. If the BH annulus does not test, then perforate at the appropriate depth and attempt to circulate cement to surface filling the 4-1/2 casing and the BH annulus to surface. Shut well in and WOC.

12. Nipple down BOP and cut off casing below the casing flange. Install P&A marker with cement to comply with regulations. Rig down, move off location, cut off anchors, and restore location.

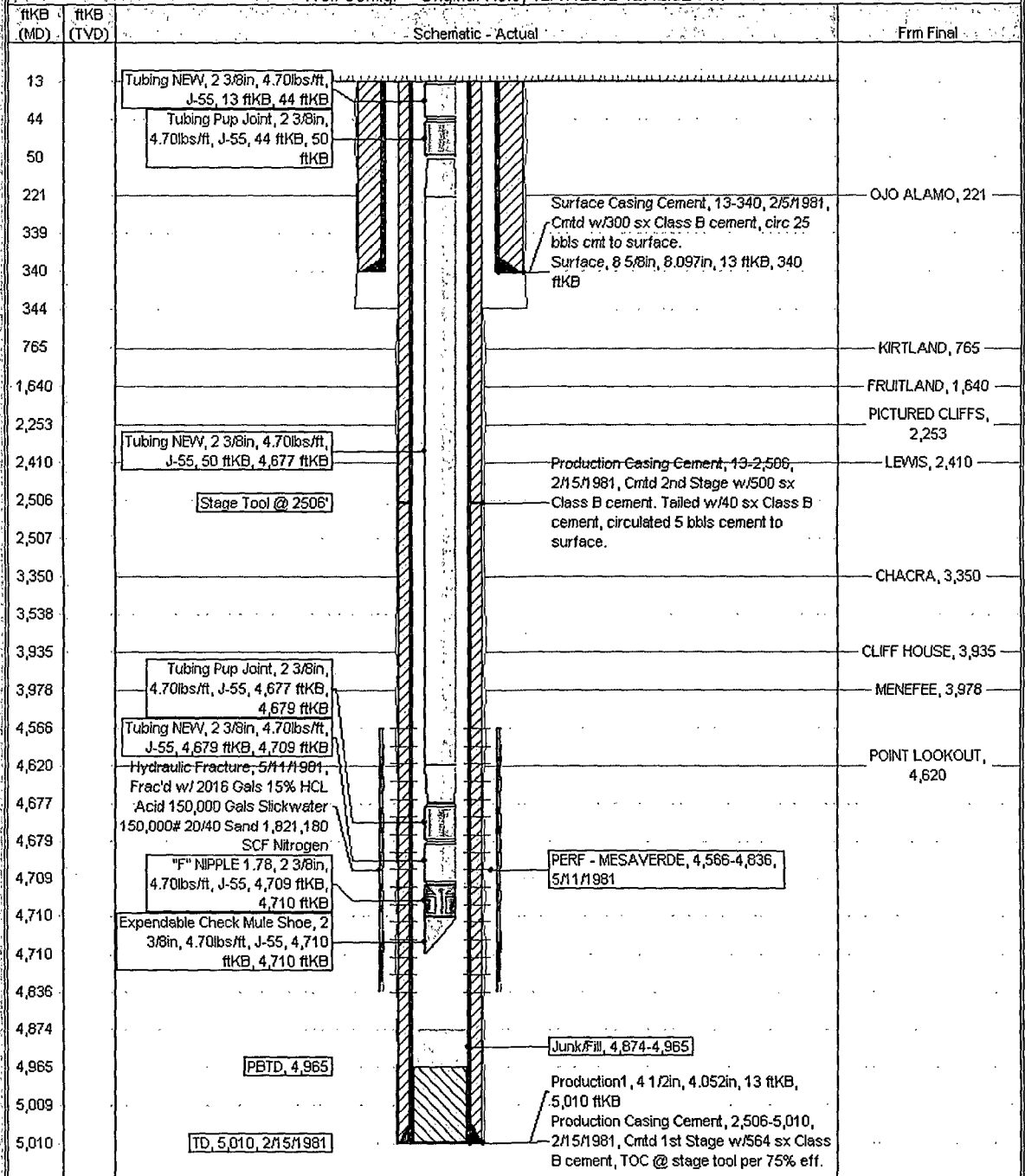
Current Schematic

ConocoPhillips

Well Name: TALIAFERRO #7

API/UNII 3004524763	State Legal Location NMPM,029-031N-012W	Field Name BLANCO MESAVERDE (PRODUCED ...)	License No.	State/Province NEW MEXICO	Well Configuration Type Edit
Grossed Elevation (ft) 5,957.00	Original KB/RT Elevation (ft) 5,970.00	KB-Grossed Distance (ft) 13.00	KB-Casing Flange Distance (ft)	KB-Tubing Hanger Distance (ft)	

Well Config: - Original Hole, 12/17/2012 12:42:52 PM



Proposed Schematic

ConocoPhillips

Well Name: TALIAFERRO #7

API/UN# 3004524763	Surface Legal Location NMPM, 029-031N-012W	Field Name	License No.	State/Province NEW MEXICO	API Configuration Type	Edit
Ground Elevation (ft) 5,957.00	Original B.P.T. Elevation (ft) 5,970.00	1/8" Ground DG Elevation (ft)	13.00	1/8" Casing Flange DG Elevation (ft)	1/8" Tubing Hanger DG Elevation (ft)	

Well Config: Original Hole, 1/1/2020

ftKB (MD)	Form Final	Schematic - Actual
13		
44		
50		
221	OJO ALAMO, 221	
339		
340		Surface, 8 5/8in, 8.097in, 13 ftKB, 340 ftKB
344		Surface Casing Cement, 13-340, 2/5/1981, Cmt'd w/300 sx Class B cement, circ 25 bbls cmt to surface.
765	KIRTLAND, 765	
815		Plug #5, 13-815, 1/1/2020, Mix 66 sx Class B cement and spot a balanced plug inside the casing from 815' to surface, circulate good cement out casing valve.
1,590		
1,640	FRUITLAND, 1,640	Plug #4, 1,590-1,690, 1/1/2020, Mix 12 sx Class B cement and spot a balanced cement plug inside casing to isolate the Fruitland formation top.
1,690		
2,203		
2,253	PICTURED CLIFFS, 2,253	Plug #3, 2,203-2,303, 1/1/2020, Mix 12 sx Class B cement and spot a balanced cement plug inside casing to isolate the Pictured Cliffs formation top.
2,303		
2,410	LEWIS, 2,410	
2,506		Production Casing Cement, 13-2,506, 2/15/1981, Cmt'd 2nd Stage w/500 sx Class B cement. Tailed w/40 sx Class B cement, circulated 5 bbls cement to surface.
2,507		
3,300		
3,350	CHACRA, 3,350	Plug #2, 3,300-3,400, 1/1/2020, Mix 12 sx Class B cement and spot a balanced cement plug inside casing to isolate the Chacra formation top.
3,400		
3,538		
3,885		
3,935	CLIFF HOUSE, 3,935	
3,978	MENEFEE, 3,978	
4,516		Plug #1, 3,885-4,516, 1/1/2020, Mix 51 sx Class B cement and spot a plug inside the casing above CR to isolate the Mesaverde perforations and formation top.
4,517		
4,566		
4,620	POINT LOOKOUT, 4,620	
4,677		
4,679		
4,709		PERF - MESAVERDE, 4,566-4,836, 5/11/1981
4,710		
4,710		
4,836		
4,874		Junk/Fill, 4,874-4,965
4,965		PBTD, 4,965
5,009		Production 1, 4 1/2in, 4.052in, 13 ftKB, 5,010 ftKB
5,010		TD, 5,010, 2/15/1981
		Production Casing Cement, 2,506-5,010, 2/15/1981, Cmt'd 1st Stage w/564 sx Class B cement, TOC @ stage tool per 75% eff.

**UNITED STATES DEPARTMENT OF THE INTERIOR
BUREAU OF LAND MANAGEMENT
FARMINGTON DISTRICT OFFICE
6251 COLLEGE BLVD.
FARMINGTON, NEW MEXICO 87402**

Attachment to notice of
Intention to Abandon:

Re: Permanent Abandonment
Well: 7 Taliaferro

CONDITIONS OF APPROVAL

1. Plugging operations authorized are subject to the attached "General Requirements for Permanent Abandonment of Wells on Federal and Indian Lease."
2. Farmington Office is to be notified at least 24 hours before the plugging operations commence (505) 564-7750.
3. The following modifications to your plugging program are to be made:
 - a) Bring the top of the Measverde plug to 3784'.
 - b) Place the Chacra plug from 3050' – 2950'.
 - c) Place the Fruitland plug from 1929' – 1829'.

You are also required to place cement excesses per 4.2 and 4.4 of the attached General Requirements.

Office Hours: 7:45 a.m. to 4:30 p.m.