

RECEIVED

Form 3160-5

(August 2007)

NOV 28 2012

UNITED STATES

DEPARTMENT OF THE INTERIOR
BUREAU OF LAND MANAGEMENTFarmington Field Office
Bureau of Land Management

SUNDRY NOTICES AND REPORTS ON WELLS

Do not use this form for proposals to drill or to re-enter an abandoned well. Use Form 3160-3 (APD) for such proposals.

FORM APPROVED

OMB No. 1004-0137

Expires: July 31, 2010

5. Lease Serial No.

NMSF-078741

6. If Indian, Allottee or Tribe Name

SUBMIT IN TRIPLICATE - Other instructions on page 2.

1. Type of Well

☐ Oil Well☒ Gas Well☐ Other

2. Name of Operator

Burlington Resources Oil & Gas Company LP

3a. Address

PO Box 4289, Farmington, NM 87499

3b. Phone No. (include area code)

(505) 326-9700

7. If Unit of CA/Agreement, Name and/or No.

San Juan 30-6 Unit

8. Well Name and No.

San Juan 30-6 Unit 490S

9. API Well No.

30-039-27719

4. Location of Well (Footage, Sec., T., R., M., or Survey Description)

Surface

Unit O (SWSE), 920' FSL & 1495' FEL, Sec. 25, T30N, R6W

11. Country or Parish, State

Rio Arriba

New Mexico

12. CHECK THE APPROPRIATE BOX(ES) TO INDICATE NATURE OF NOTICE, REPORT OR OTHER DATA

TYPE OF SUBMISSION

☒ Notice of Intent☐ Subsequent Report☐ Final Abandonment Notice☐ Acidize☐ Alter Casing☐ Casing Repair☐ Change Plans☐ Convert to Injection☐ Deepen☐ Fracture Treat☐ New Construction☒ Plug and Abandon☐ Plug Back

TYPE OF ACTION

☐ Production (Start/Resume)☐ Reclamation☐ Recomplete☐ Temporarily Abandon☐ Water Disposal☐ Water Shut-Off☐ Well Integrity☐ Other

13. Describe Proposed or Completed Operation: Clearly state all pertinent details, including estimated starting date of any proposed work and approximate duration thereof.

If the proposal is to deepen directionally or recompleat horizontally, give subsurface locations and measured and true vertical depths of all pertinent markers and zones. Attach the bond under which the work will be performed or provide the Bond No. on file with BLM/BIA. Required subsequent reports must be filed within 30 days following completion of the involved operations. If the operation results in a multiple completion or recompleat in a new interval, a Form 3160-4 must be filed once Testing has been completed. Final Abandonment Notices must be filed only after all requirements, including reclamation, have been completed and the operator has determined that the site is ready for final inspection.)

Burlington Resources requests permission to P&A the subject well per the attached procedure, current and proposed wellbore schematics.

* Extend Kirtland plug down to 3001'
* Place inside PC plug from 3702' - 3602'

RCVD DEC 6 '12
OIL CONS. DIV.

DIST. 3

Notify NMOCD 24 hrs
prior to beginning
operations

14. I hereby certify that the foregoing is true and correct. Name (Printed/Typed)

Dollie L. Busse

Title Staff Regulatory Technician

Signature

Date

11/27/12

THIS SPACE FOR FEDERAL OR STATE OFFICE USE

Approved by

Original Signed: Stephen Mason

Title

Date

DEC 04 2012

Conditions of approval, if any, are attached. Approval of this notice does not warrant or certify that the applicant holds legal or equitable title to those rights in the subject lease which would entitle the applicant to conduct operations thereon.

Office

Title 18 U.S.C. Section 1001 and Title 43 U.S.C. Section 1212, make it a crime for any person knowingly and willfully to make to any department or agency of the United States any false, fictitious or fraudulent statements or representations as to any matter within its jurisdiction.

ConocoPhillips
SAN JUAN 30-6 UNIT 490S
Expense - P&A

Lat 36° 46' 43.176" N

Long 107° 24' 44.208" W

PROCEDURE

This project requires a NMOCD C-144 CLEZ Closed-Loop System Permit for the use of an A-Plus steel tank to handle waste fluids circulated from the well and cement wash up.

1. Hold pre-job safety meeting. Comply with all NMOCD, BLM, and COPC safety and environmental regulations. Test rig anchors prior to moving in rig.
2. MIRU work over rig. Check casing, tubing, and bradenhead pressures and record them in Wellview.
3. When an existing primary valve (i.e. casing valve) is to be used, the existing piping should be removed and replaced with the appropriate piping for the intended operation.
4. RU blow lines from casing valves and begin blowing down casing pressure. Unseat pump, kill well with water, as necessary, and at least pump tubing capacity of water down tubing.
5. TOOH with 3/4" rods; LD rods.
6. ND wellhead and NU BOPE. Pressure and function test BOP. PU and remove tubing hanger.
7. TOOH with 2-3/8", 4.7#, J-55, EUE tubing (per pertinent data sheet).

Rods:	Yes	Size:	3/4"	Length:	3546'
Tubing:	Yes	Size:	2-3/8"	Length:	3580'

Round trip 7" casing scraper top of liner (3361') or as deep as possible.

All cement volumes use 100% excess outside pipe and 50' excess inside pipe. The stabilizing wellbore fluid will be 8.3 ppg, sufficient to balance all exposed formation pressures. All cement will be ASTM Type II mixed at 15.6 ppg with a 1.18 cf/sk yield. Per CBL, cement volumes may change.

8. Plug 1 (Fruitland formation top, Open Hole, Intermediate Shoe, Liner Top, 3095-3349', 59 Sacks Class B Cement)
RIH and set CR for 7", 20#, J-55 casing at 3349'. Load casing and circulate clean. Pressure test tubing to 1000 psi. Pressure test casing to 800 psi. If casing does not test, then spot or tag subsequent plugs as appropriate. Run CBL from 3349' to surface. Mix 59 sx of Class B cement and spot plug inside casing to isolate the Fruitland formation top, open hole, intermediate shoe and liner top. PUH

~~2956~~ 2674

9. Plug 2 (Ojo Alamo and Kirtland formation tops, ~~2750-2902'~~ 51 Sacks Class B Cement)
Mix ~~51~~ sx Class B cement and spot balance plug inside casing to isolate the Ojo Alamo and Kirtland formation tops. PUH

~~1536~~ 1432

10. Plug 3 (Nacimiento formation top, ~~1402-1502'~~ 29 Sacks Class B Cement)
Mix 29 sx Class B cement and spot balance plug inside casing to isolate the Nacimiento formation to. PUH

11. Plug 4 (Surface Shoe, 0-187', 46 Sacks Class B Cement)
Attempt to pressure test the bradenhead annulus to 300 PSI; note the volume to load. If the BH annulus holds pressure, then establish circulation out casing valve with water. Mix 46 sx cement and spot a balanced plug inside casing from 187' to surface, circulate good cement out casing valve. TOH and LD tubing. Shut well in and WOC. If the BH annulus does not test, perforate at the appropriate depth and attempt to circulate cement to surface filling the casing from 187' and the annulus from the squeeze holes to surface. Shut in well and WOC.

12. Nipple down BOP and cut off casing below the casing flange. Install P&A marker with cement to comply with regulations. Rig down, move off location, cut off anchors, and restore location.

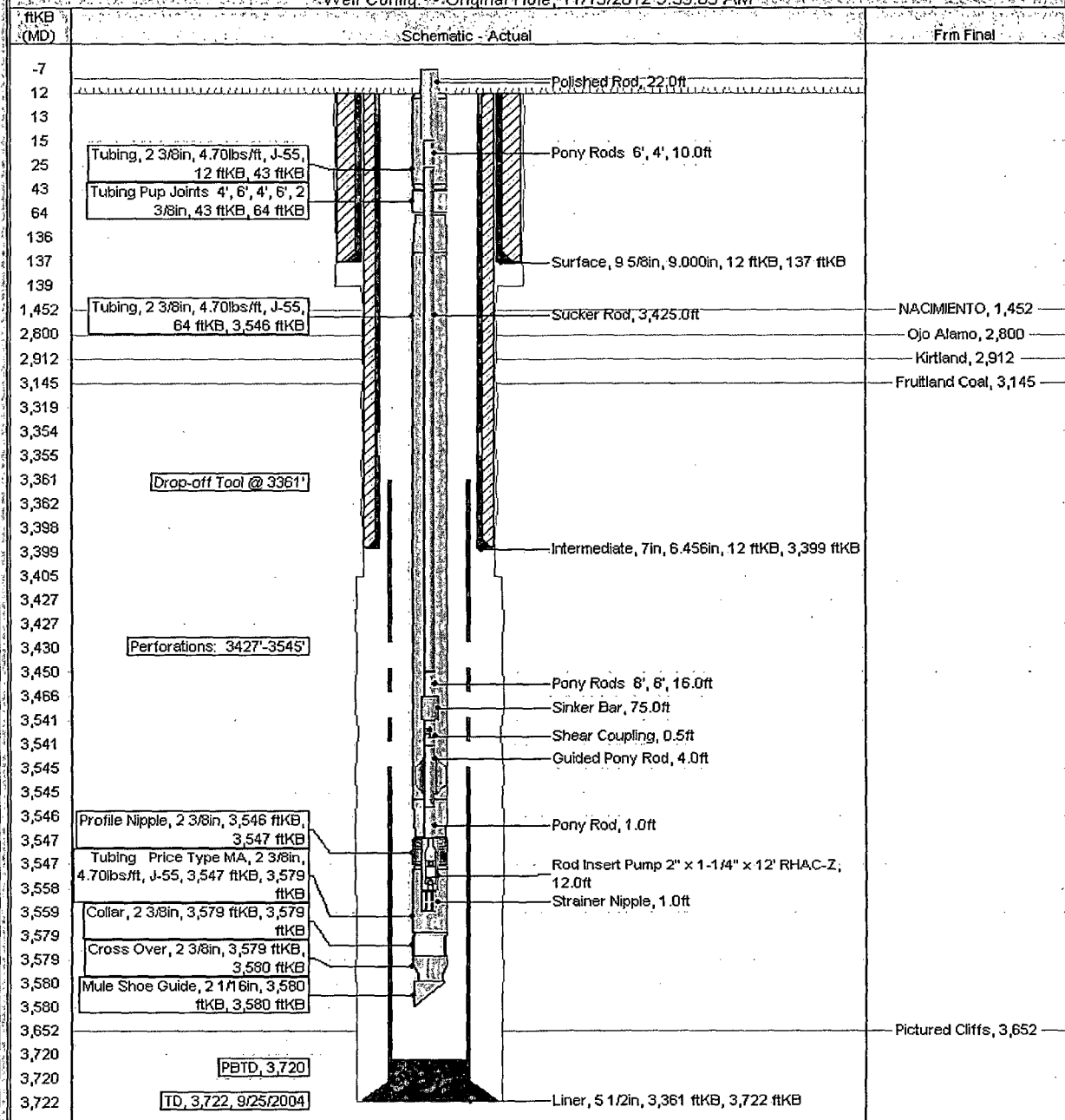
Current Schematic - Version 1

ConocoPhillips

Well Name: SAN JUAN 30.6 UNIT #490S

API/Well	Surface Legal Location	Field Name	License No.	State/Province	Well Configuration Type	Edit
3003927719	NMPM,025-030N-005W	BASIN (FRUITLAND COAL)		NEW MEXICO		
Ground Elevation (ft)	Original KB/RT Elevation (ft)	KB-Grond Distance (ft)	KB-Casing Flange Distance (ft)	KB-Tubing Hanger Distance (ft)		
6,715.00	6,727.00	12.00				

Well Config: Original Hole 11/13/2012 9:53:05 AM

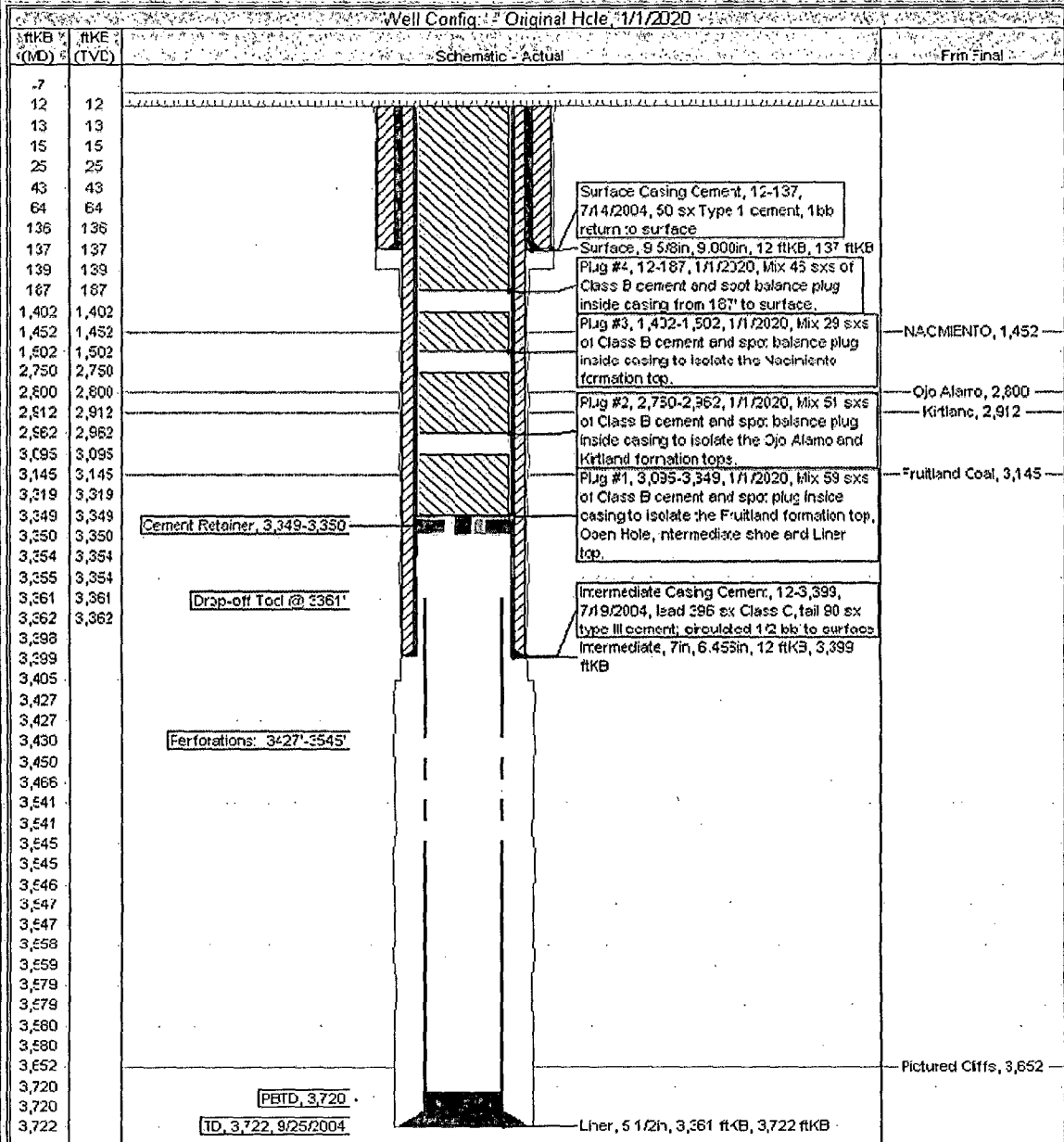


ConocoPhillips

Proposed Schematic

Well Name: SAN JUAN 30.6 UNIT #190S

API Well #	Surface Legal Location	Field Name	License No.	State Province	Well Completion Type	Editor
3003927719	NMPM 025-030N-006/V	FRUITLAND COAL		NEW MEXICO		
Original Depth (ft)	Original Depth (ft)	Original Depth (ft)	Original Depth (ft)	Original Depth (ft)	Original Depth (ft)	
8,715.00	8,727.00	12.00				



**UNITED STATES DEPARTMENT OF THE INTERIOR
BUREAU OF LAND MANAGEMENT
FARMINGTON DISTRICT OFFICE
6251 COLLEGE BLVD.
FARMINGTON, NEW MEXICO 87402**

Attachment to notice of
Intention to Abandon:

Re: Permanent Abandonment
Well: 490S San Juan 30-6 Unit

CONDITIONS OF APPROVAL

1. Plugging operations authorized are subject to the attached "General Requirements for Permanent Abandonment of Wells on Federal and Indian Lease."
2. Farmington Office is to be notified at least 24 hours before the plugging operations commence (505) 564-7750.
3. The following modifications to your plugging program are to be made:
 - a) Place the Kirtland/Ojo Alamo plug from 2956' - 2674'.
 - b) Place the Nacimiento plug from 1536' - 1436'.

You are also required to place cement excesses per 4.2 and 4.4 of the attached General Requirements.

Office Hours: 7:45 a.m. to 4:30 p.m.