

District I  
1625 N. French Dr., Hobbs, NM 88240  
District II  
811 S. First St., Artesia, NM 88210  
District III  
1000 Rio Brazos Road, Aztec, NM 87410  
District IV  
1220 S. St. Francis Dr., Santa Fe, NM 87505

State of New Mexico  
Energy Minerals and Natural Resources  
Department  
Oil Conservation Division  
1220 South St. Francis Dr.  
Santa Fe, NM 87505

Form C-144 CLEZ  
Revised August 1, 2011

For closed-loop systems that only use above ground steel tanks or haul-off bins and propose to implement waste removal for closure, submit to the appropriate NMOCD District Office.

**Closed-Loop System Permit or Closure Plan Application**

(that only use above ground steel tanks or haul-off bins and propose to implement waste removal for closure)

Type of action: ☒ Permit ☐ Closure

Instructions: Please submit one application (Form C-144 CLEZ) per individual closed-loop system request. For any application request other than for a closed-loop system that only use above ground steel tanks or haul-off bins and propose to implement waste removal for closure, please submit a Form C-144.

Please be advised that approval of this request does not relieve the operator of liability should operations result in pollution of surface water, ground water or the environment. Nor does approval relieve the operator of its responsibility to comply with any other applicable governmental authority's rules, regulations or ordinances.

1. Operator: Huntington Energy, L.L.C. OGRID #: 208706  
Address: 908 N.W. 71<sup>st</sup> St., Oklahoma City, OK 73116  
Facility or well name: Canyon Largo Unit #513  
API Number: 30-039-31151 OCD Permit Number: \_\_\_\_\_  
U/L or Qtr/Qtr P Section 33 Township 25N Range 7W County: Rio Arriba  
Center of Proposed Design: Latitude 36.35135N Longitude -107.57195W NAD: ☐ 1927 ☒ 1983  
Surface Owner: ☒ Federal ☐ State ☐ Private ☐ Tribal Trust or Indian Allotment

2. ☒ **Closed-loop System:** Subsection H of 19.15.17.11 NMAC  
Operation: ☒ Drilling a new well ☐ Workover or Drilling (Applies to activities which require prior approval of a permit or notice of intent) ☐ P&A  
☐ Above Ground Steel Tanks or ☐ Haul-off Bins

3. **Signs:** Subsection C of 19.15.17.11 NMAC  
☐ 12"x 24", 2" lettering, providing Operator's name, site location, and emergency telephone numbers  
☒ Signed in compliance with 19.15.16.8 NMAC

RCVD JAN 28 '13  
OIL CONS. DIV.  
DIST. 3

4. **Closed-loop Systems Permit Application Attachment Checklist:** Subsection B of 19.15.17.9 NMAC  
Instructions: Each of the following items must be attached to the application. Please indicate, by a check mark in the box, that the documents are attached.  
☒ Design Plan - based upon the appropriate requirements of 19.15.17.11 NMAC  
☒ Operating and Maintenance Plan - based upon the appropriate requirements of 19.15.17.12 NMAC  
☒ Closure Plan (Please complete Box 5) - based upon the appropriate requirements of Subsection C of 19.15.17.9 NMAC and 19.15.17.13 NMAC  
☐ Previously Approved Design (attach copy of design) API Number: \_\_\_\_\_  
☐ Previously Approved Operating and Maintenance Plan API Number: \_\_\_\_\_

5. **Waste Removal Closure For Closed-loop Systems That Utilize Above Ground Steel Tanks or Haul-off Bins Only:** (19.15.17.13.D NMAC)  
Instructions: Please identify the facility or facilities for the disposal of liquids, drilling fluids and drill cuttings. Use attachment if more than two facilities are required.  
Disposal Facility Name: IEI Disposal Facility Permit Number: 010010B  
Disposal Facility Name: \_\_\_\_\_ Disposal Facility Permit Number: \_\_\_\_\_  
Will any of the proposed closed-loop system operations and associated activities occur on or in areas that will not be used for future service and operations?  
☐ Yes (If yes, please provide the information below) ☒ No  
Required for impacted areas which will not be used for future service and operations:  
☒ Soil Backfill and Cover Design Specifications - based upon the appropriate requirements of Subsection H of 19.15.17.13 NMAC  
☒ Re-vegetation Plan - based upon the appropriate requirements of Subsection I of 19.15.17.13 NMAC  
☒ Site Reclamation Plan - based upon the appropriate requirements of Subsection G of 19.15.17.13 NMAC

6. **Operator Application Certification:**  
I hereby certify that the information submitted with this application is true, accurate and complete to the best of my knowledge and belief.  
Name (Print): Catherine Smith Title: Regulatory  
Signature: Catherine Smith Date: 1/23/2013  
e-mail address: csmith@huntingtonenergy.com Telephone: 405-840-9876

7. **OCD Approval:** ☒ Permit Application (including closure plan) ☐ Closure Plan (only)

OCD Representative Signature: John D. Kelly

Approval Date: 1/29/2013

Title: Compliance Officer

OCD Permit Number: \_\_\_\_\_

8. **Closure Report (required within 60 days of closure completion):** Subsection K of 19.15.17.13 NMAC

*Instructions: Operators are required to obtain an approved closure plan prior to implementing any closure activities and submitting the closure report. The closure report is required to be submitted to the division within 60 days of the completion of the closure activities. Please do not complete this section of the form until an approved closure plan has been obtained and the closure activities have been completed.*

☐ Closure Completion Date: \_\_\_\_\_

9. **Closure Report Regarding Waste Removal Closure For Closed-loop Systems That Utilize Above Ground Steel Tanks or Haul-off Bins Only:**

*Instructions: Please indentify the facility or facilities for where the liquids, drilling fluids and drill cuttings were disposed. Use attachment if more than two facilities were utilized.*

Disposal Facility Name: \_\_\_\_\_ Disposal Facility Permit Number: \_\_\_\_\_

Disposal Facility Name: \_\_\_\_\_ Disposal Facility Permit Number: \_\_\_\_\_

Were the closed-loop system operations and associated activities performed on or in areas that *will not* be used for future service and operations?

☐ Yes (If yes, please demonstrate compliance to the items below) ☐ No

*Required for impacted areas which will not be used for future service and operations:*

☐ Site Reclamation (Photo Documentation)

☐ Soil Backfilling and Cover Installation

☐ Re-vegetation Application Rates and Seeding Technique

10.

**Operator Closure Certification:**

I hereby certify that the information and attachments submitted with this closure report is true, accurate and complete to the best of my knowledge and belief. I also certify that the closure complies with all applicable closure requirements and conditions specified in the approved closure plan.

Name (Print): \_\_\_\_\_ Title: \_\_\_\_\_

Signature: \_\_\_\_\_ Date: \_\_\_\_\_

e-mail address: \_\_\_\_\_ Telephone: \_\_\_\_\_

District I  
1625 N. French Dr., Hobbs, NM 88240  
Phone: (575) 393-6161 Fax: (575) 393-0720  
District II  
811 S. First St., Artesia, NM 88210  
Phone: (575) 748-1283 Fax: (575) 748-9720  
District III  
1000 Rio Brazos Road, Aztec, NM 87410  
Phone: (505) 334-6178 Fax: (505) 334-6170  
District IV  
1220 S. St. Francis Dr., Santa Fe, NM 87505  
Phone: (505) 476-3460 Fax: (505) 476-3462

**RECEIVED**  
State of New Mexico  
Energy, Minerals & Natural Resources Department  
**OIL CONSERVATION DIVISION**  
1220 South St. Francis Dr.  
Santa Fe, NM 87505  
Huntington Field Office  
Bureau of Land Management

Form C-102  
Revised August 1, 2011  
Submit one copy to  
appropriate  
District Office

☐ AMENDED REPORT

**WELL LOCATION AND ACREAGE DEDICATION PLAT**

<sup>1</sup> API Number <b>30-039-31151</b>	<sup>2</sup> Pool Code 71599	<sup>3</sup> Pool Name Basin Dakota
<sup>4</sup> Property Code 32660	<sup>5</sup> Property Name CANYON LARGO UNIT	
<sup>7</sup> OGRID No. 208706	<sup>8</sup> Operator Name HUNTINGTON ENERGY, LLC	
		<sup>6</sup> Well Number 513
		<sup>9</sup> Elevation 6986'

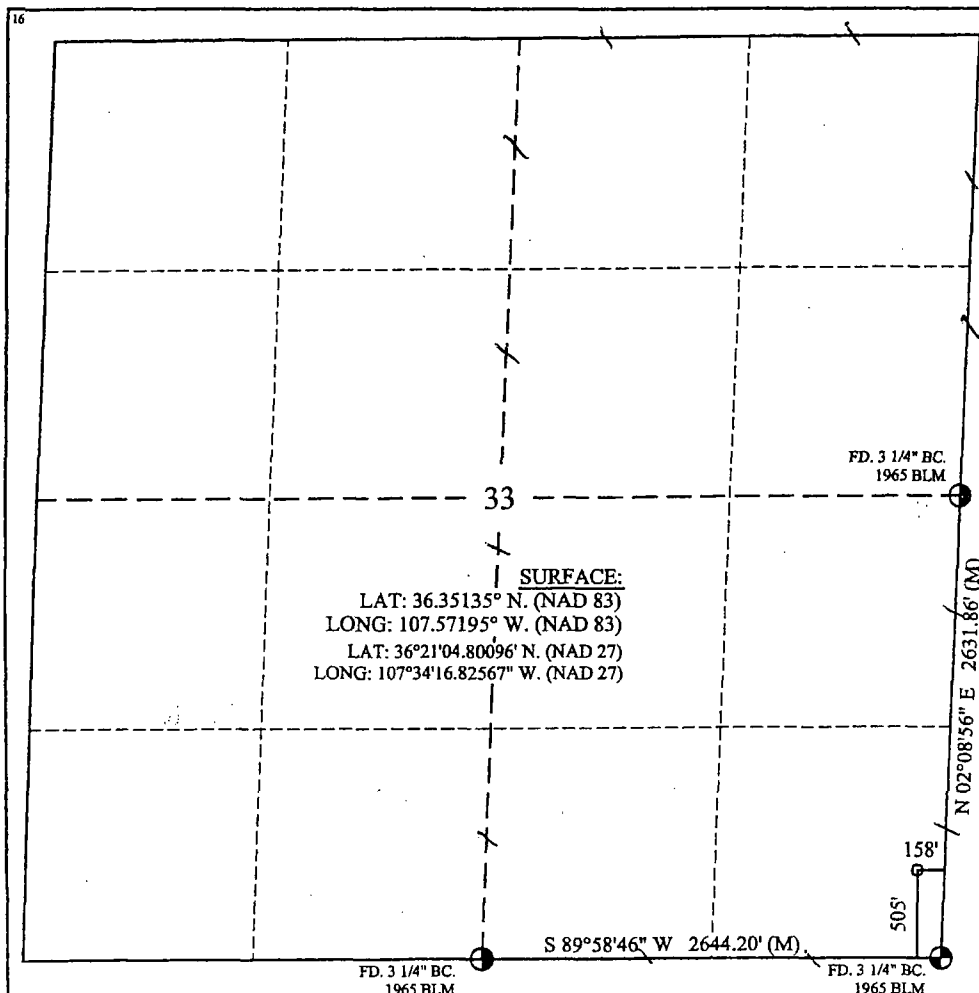
**<sup>10</sup> Surface Location**

UL or lot no.	Section	Township	Range	Lot Idn	Feet from the	North/South line	Feet from the	East/West line	County
P	33	25-N	7-W		505	SOUTH	158	EAST	RIO ARriba

**<sup>11</sup> Bottom Hole Location If Different From Surface**

UL or lot no.	Section	Township	Range	Lot Idn	Feet from the	North/South line	Feet from the	East/West line	County
<sup>12</sup> Dedicated Acres E/320			<sup>13</sup> Joint or Infill		<sup>14</sup> Consolidation Code		<sup>15</sup> Order No.		

No allowable will be assigned to this completion until all interest have been consolidated or a non-standard unit has been approved by the division.



**17 OPERATOR CERTIFICATION**

I hereby certify that the information contained herein is true and complete to the best of my knowledge and belief, and that this organization either owns a working interest or unleased mineral interest in the land including the proposed bottom hole location or has a right to drill this well at this location pursuant to a contract with an owner of such a mineral or working interest, or to a voluntary pooling agreement or a compulsory pooling order heretofore entered by the division.

*Catherine Smith* 10/18/12  
Signature Date

Catherine Smith

Printed Name

csmith@huntingtonenergy.com

E-mail Address

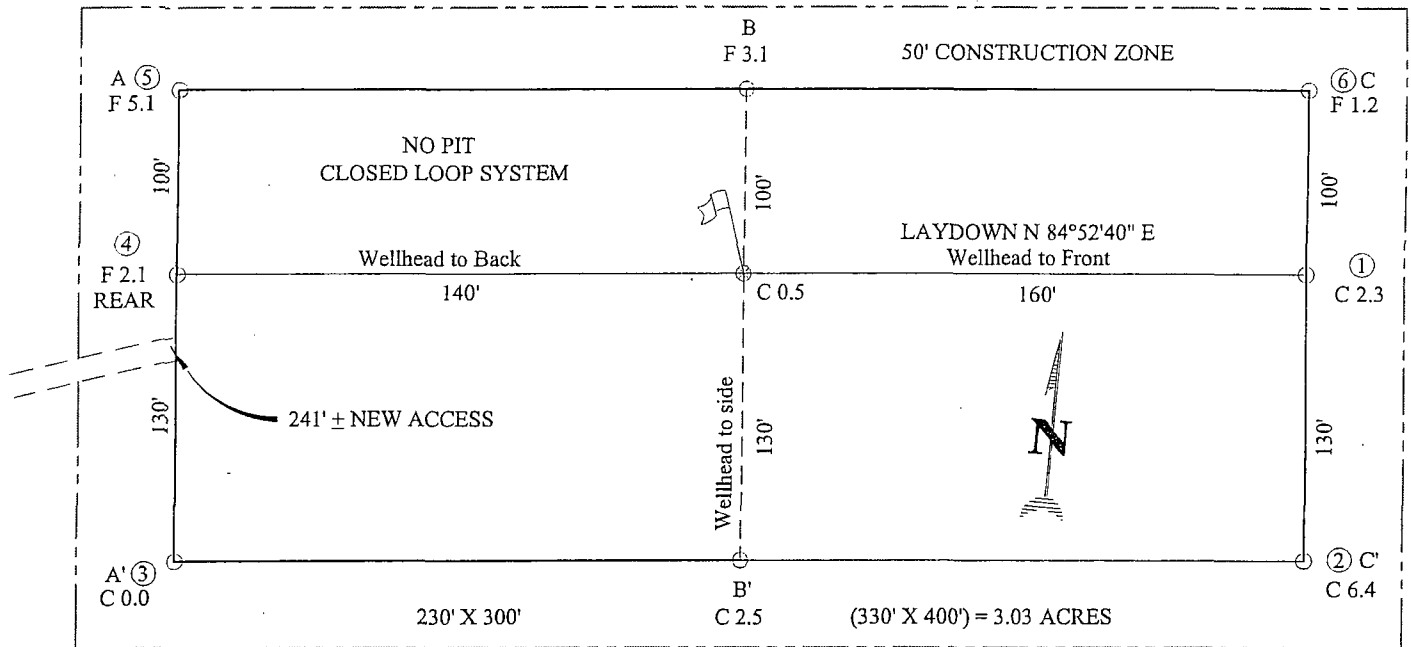
**18 SURVEYOR CERTIFICATION**

I hereby certify that the well location shown on this plat was plotted from field notes of actual surveys made by me or under my supervision, and that the same is true and correct to the best of my belief.

JUL 25 2012  
Date of Survey  
Signature and Seal of Professional Surveyor  
**ROY A. RUSH**  
REGISTERED PROFESSIONAL LAND SURVEYOR  
8894  
8478-17  
Certificate Number

WINTINGTON ENERGY, LLC  
 CANYON LARGO UNIT No. 513, 505 FSL 158 FEL  
 SECTION 33, T-25-N, R-7-W, N.M.P.M., RIO ARriba COUNTY, N.M.  
 GROUND ELEVATION: 6986', DATE: JULY 23, 2012

NAD 83  
 LAT: = 36.35135° N  
 LONG: = 107.57195° W  
 NAD 27  
 LAT: = 36°21'04.80096" N  
 LONG: = 107°34'16.82567" W



NOTE:

DAGGETT ENTERPRISES, INC. IS NOT LIABLE FOR  
 UNDERGROUND UTILITIES OR PIPELINES. NEW MEXICO  
 ONE CALL TO BE NOTIFIED 48 HOURS PRIOR TO  
 EXCAVATION OR CONSTRUCTION.

ELEV. A-A'

C/L

ELEV.	C/L
7,000	
6,990	
6,980	
6,970	

ELEV. B-B'

C/L


ELEV.	C/L
7,000	
6,990	
6,980	
6,970	

ELEV. C-C'

C/L

ELEV.	C/L
7,000	
6,990	
6,980	
6,970	

NOTE: CONTRACTOR SHOULD CALL ONE-CALL FOR LOCATION OF ANY MARKED OR UNMARKED BURIED PIPELINES OR CABLES ON WELL PAD AND OR ACCESS ROAD AT LEAST TWO (2) WORKING DAYS PRIOR TO CONSTRUCTION.

REVISION:	DATE:	REVISOR:	DATE:
<p><b>Daggett Enterprises, Inc.</b>          Surveying and Oil Field Services          P.O. Box 510 Farmington, NM 87499          Phone (505) 326-1772 Fax (505) 326-6019          New Mexico L.S. No. 8864</p>		<p>CADFILE: JTG116_CFS          DATE: 7/26/12</p>	
<p>DRAWN BY: G.V.          ROW#: JTG116</p>			

**CANYON LARGO UNIT  
CLOSED PIT  
C-144 CLEZ ATTACHMENT**

**Closed Loop Design Plan**

The Closed Loop System will take discharged fluid coming from the sand trap of the drilling rig's flow line shaker and over flow into the first pit of the rig. A 5'x 6' pump will feed the mud cleaner where it will dewater drill solids and discharge fluid into 2<sup>nd</sup> rig pit. Cuttings from both the flow line shaker and mud cleaner will discard into cutting tank "A". A centrifuge pump will pullout of the 2<sup>nd</sup> rig pit where the fluid will be pumped through a dewatering house continuing through the centrifuge which will return clean fluid into the 3<sup>rd</sup> rig pit. The drill solids from all equipment will be discarded into Cutting Tank "A" and will be mixed with a solidification material that will make the discard dry enough to haul to disposal facility. The 2<sup>nd</sup> Cutting Tank "B" will be used for storage as well as drilled to keep with rate of drilling speed and disposal haul off. (See attached diagram.)

**Closed-Loop Operating and Maintenance Plan**

1. Equipment should run conventional continually with dewatering as needed to maintain 5% or less LGS.
2. Liquids will be vacuumed out and disposed of at IEI (#NM-010010B) Solids in the closed-loop tank will be vacuumed out and disposed of at IEI (Permit # 010010B) on a scheduled basis to prevent over topping.
3. Closed Loop equipment will be inspected daily, by each tour and any necessary maintenance performed. The Division District Office will be notified within 48 hrs of any leak at the closed loop tank. Repairs will occur immediately.
4. Once drilling rig is released, all fluids will be disposed in IEI. After completion rig is released, all fluids will be sent to the disposal as well.

**Closed-Loop Closure Plan**

The closed loop tank will be moved as part of the rig move and removed from location. Cutting Tanks "A" and "B" will be closed in accordance with 19.15.17.13. All cuttings and remaining sludge will be transported to Industrial Eco Systems, Inc. (Permit # 010010B). All remaining fluids will be hauled and disposed to IEI. At time of well abandonment, the site will be reclaimed and re-vegetated to pre-existing conditions as provided by 19.15.17.B NMAC.

**CANYON LARGO UNIT  
CLOSED PIT  
C-144 CLEZ ATTACHMENT**

**Soil Backfill and Cover Design**

- 1) The soil cover shall consist of the background thickness of topsoil or one foot of suitable material to establish growth at the site, whichever is greater.
- 2) Huntington will build the soil cover to the site's existing grade and prevent ponding of water and erosion.

**Re-Vegetation Plan**

The first growing season after the closed loop pit closure, Huntington will seed the disturbed area. The vegetative cover will be the approved mixture meeting the Bureau of Land Management and/or New Mexico Oil Conservation requirements (70% of native perennial vegetative cover –three native plant species and at least one grass). The cover will be maintained through two successive growing seasons. Until the required vegetative cover is established, Huntington will repeat the seeding. The division will be notified when seeding takes place and when re-vegetation occurs.

**Site Reclamation Plan**

Huntington Energy will reclaim the location and all areas associated with the closed-loop system to a safe and stable condition that blends with the surrounding undisturbed area. The area will be restored to the condition that existed prior to any construction by placement of the soil cover as provided in Subsection H of 19.15.17.13 NMAC, re-contour the location and associated areas to a contour that approximates the original contour and blends with the surrounding topography and re-vegetate according to Subsection I of 19.15.17.13 NMAC.

# CLOSED LOOP SYSTEM DESIGN "DIAGRAM"

