

UNITED STATES
DEPARTMENT OF THE INTERIOR
BUREAU OF LAND MANAGEMENT

FORM APPROVED
OMB NO. 1004-0137
Expires July 31, 2010

SUNDRY NOTICES AND REPORTS ON WELLS

Do not use this form for proposals to drill or to re-enter an abandoned well. Use Form 3160-3 (APD) for such proposals.

5. Lease Serial No.

14206032168A

6. If Indian, Allottee or Tribe Name

NAVAJO TRIBE

7. If Unit or CA/Agreement, Name and/or No.

8. Well Name and No.

NAVAJO 28 #3

9. API Well No.

30-045-30615

10. Field and Pool, or Exploratory Area

W. KUTZ PICTURED CLIFFS

11. County or Parish, State

SAN JUAN

NM

SUBMIT IN TRIPLICATE - Other instructions on page 2

1. Type of Well

☐ Oil Well ☒ Gas Well ☐ Other

2. Name of Operator

XTO ENERGY INC.

3a. Address

382 CR 3100 AZTEC, NM 87410

3b. Phone No. (include area code)

505-333-3630

4. Location of Well (Footage, Sec., T., R., M., or Survey Description)

1831' FSL & 1725' FEL NWSE SEC. 28 (J) - T29N-R14W N.M.P.M.

12. CHECK APPROPRIATE BOX(ES) TO INDICATE NATURE OF NOTICE, REPORT, OR OTHER DATA

TYPE OF SUBMISSION

☒ Notice of Intent

☐ Subsequent Report

☐ Final Abandonment Notice

TYPE OF ACTION

☐ Acidize

☐ Alter Casing

☐ Casing Repair

☐ Change Plans

☐ Convert to Injection

☐ Deepen

☐ Fracture Treat

☐ New Construction

☒ Plug and Abandon

☐ Plug Back

☐ Production (Start/Resume)

☐ Reclamation

☐ Recomplete

☐ Temporarily Abandon

☐ Water Disposal

☐ Water Shut-Off

☐ Well Integrity

☐ Other

13. Describe Proposed or Completed Operation (clearly state all pertinent details, including estimated starting date of any proposed work and approximate duration thereof. If the proposal is to deepen directionally or recompleat horizontally, give subsurface locations and measured and true vertical depths of all pertinent markers and zones. Attach the Bond under which the work will be performed or provide the Bond No. on file with BLM/BIA. Required subsequent reports shall be filed within 30 days following completion of the involved operations. If the operation results in a multiple completion or recompleat in a new interval, a Form 3160-4 shall be filed once testing has been completed. Final Abandonment Notices shall be filed only after all requirements, including reclamation, have been completed, and the operator has determined that the final site is ready for final inspection.)

XTO Energy Inc. intends to plug and abandon this well per the attached procedure. Please see also the attached current and proposed wellbore diagrams.

**RCVD JAN 18 '13
OIL CONS. DIV.
DIST. 3**

**Notify NMOCD 24 hrs
prior to beginning
operations**

14. I hereby certify that the foregoing is true and correct
Name (Printed/Typed)

SHERRY J. MORROW

Title **REGULATORY ANALYST**

Signature

Date **1/7/2013**

THIS SPACE FOR FEDERAL OR STATE OFFICE USE

Approved by

Original Signed: Stephen Mason

Title

Date

JAN 16 2013

Conditions of approval, if any, are attached. Approval of this notice does not warrant or certify that the applicant holds legal or equitable title to those rights in the subject lease which would entitle the applicant to conduct operations thereon.

Office

NAVAJO 28 #3
1,831' FSL & 1,725' FEL, Section 28, T 29 N, R 14 W
San Juan County, New Mexico / API 30-045-30615

Plug and Abandonment Procedure

AFE #: 1209223
Surface Casing: 7", 20#, K-55 @ 129'. Cmt 55 sx. Circ 4 bbls cmt to surf.
Production Casing: 4-1/2", 10.5#, J-55 @ 1,236'. Cmt 155 sx. Circ 15 bbls cmt to surf.
Perforations: Pictured Cliffs: 1,035' – 1,044'
Tubing: 33 jts 2-3/8", 4.7#, J-55, 8rd EUE & 2-3/8" x 2-3/4" x 20' TWE (DV)
CDI pmp (XTO #109), EOT @ 1,111'
Rods & Pump: 1-1/4" x 22' PR, 2 – 3/4" rod subs (8', 4'), 39 – 3/4" rods, 1-1/2" sb, 7/8"
x 4' stb, 21K shear tl, 1-1/2" sb, 7/8" x 4' stb, 1-1/2" sb, spiral rod guide
& on-off tl.

*****Please notify NMOCD & BLM 24 hours prior to beginning plugging operations*****

- 1) Check for COA's before operations begin.
- 2) Test rig anchors.
- 3) Set flowback tank.
- 4) MIRU PU. TOH & LD rods & on-off tool.
- 5) ND WH. NU BOP. TOH & LD tubing & pump.
- 6) TIH w/3-7/8" bit, 3-7/8" string mill on 2-3/8" work string to 1,044'. TOH.
- 7) TIH w/4-1/2" CIBP and set @ 1,025' (Casing collar @ 1,033'). Circulate hole clean.
- 8) PT casing and CIBP to 550 psig for 30 minutes. Record test on chart. If casing does not test, contact engineer.
- 9) MIRU cement truck.
- 10) **Perforation Isolation and PC/FC Top Plug (1,025' – ^{c 36}852')**: Pump ~~17~~ sx Class "B" cement (15.6 ppg, 1.18 cuft/sx yield) down tubing and spot balanced plug from 1,025' – 852' (volume calculated with 50' excess).
- 11) **Surface Casing Shoe Plug (275' – Surface)**: Pump 25 sx class "B" cement (15.6 ppg, 1.18 cuft/sx yield) down tubing and spot balanced plug from 275' – Surface (volume calculated with 50' excess).
- 12) TOH & LD tubing.
- 13) RDMO cement truck. RDMO PU.
- 14) WOC 4 hours.

- 15) Cut off wellhead. Fill in casing as needed with cement. Install P&A marker.
- 16) Cut off anchors and reclaim location.

Regulatory:

- 1) C-144 CLEZ
- 2) NOI for P&A on form C-103
- 3) Submit a post-work sundry on form C-103 which details the P&A work and location work within 30 days of completing all required restoration work.

Equipment

- 1) 1 flowback tank
- 2) 1,050' – 2-3/8" work string
- 3) 42 sx cln "B" cmt
- 4) WLU services
- 5) Cement services
- 6) P&A marker

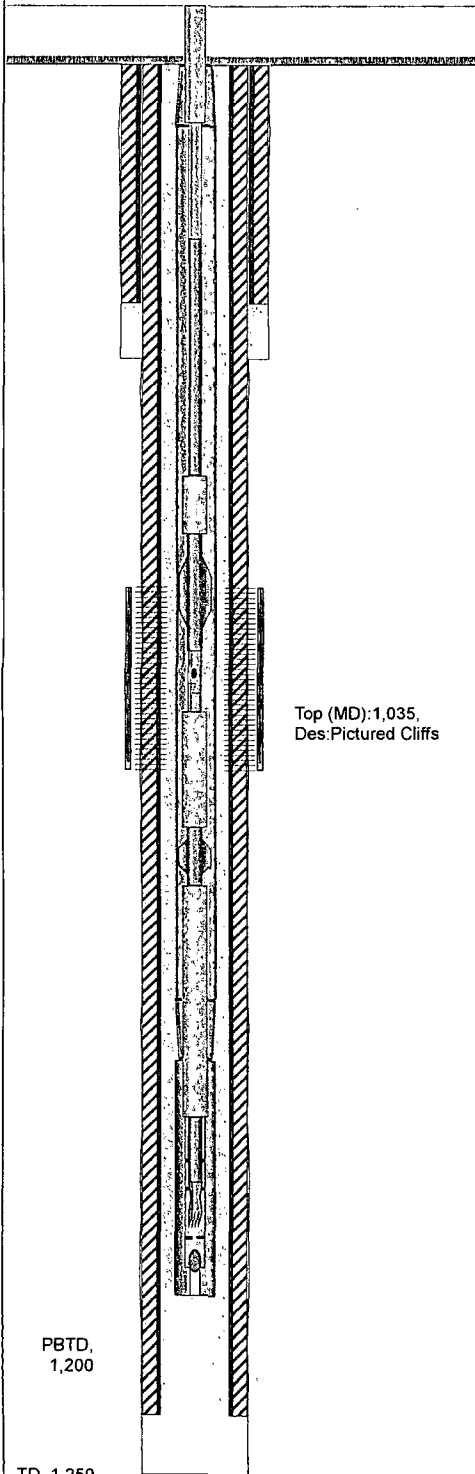


XTO - Wellbore Diagram

Well Name: Navajo 28-03

API/UWI	E/W Dist (ft)	E/W Ref	N/S Dist (ft)	N/S Ref	Location	Field Name	County	State
30045306150000	1,725.0	FEL	1,831.0	FSL	T29N-R14W-S28	Kutz W Pictured Cliffs	San Juan	New Mexico
Well Configuration Type	XTO ID B	Orig KB Elev (ft)	Gr Elev (ft)	KB-Grd (ft)	Spud Date	PBTD (All) (ftKB)	Total Depth (ftKB)	Method Of Production
Vertical	77458	5,636.00	5,631.00	5.00	5/17/2004	Original Hole - 1200.0	1,250.0	Beam

Well Config: Vertical - Original Hole	11/26/2012 10:39:00 AM
Schematic - Actual	Ind
ftKB (TVD)	ftKB (MD)

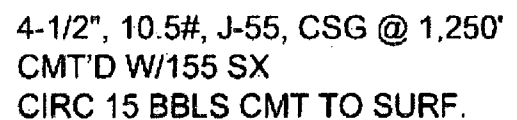


Zones		Top (ftKB)	Btm (ftKB)
Pictured Cliffs		1,035.0	1,044.0
Casing Strings			
0	Casing Description	OD (in)	WT (lbs/ft)
	Surface	7	20.00
	String Grade	K-55	Top Connection
	Set Depth (ftKB)	129.0	
5	Casing Description	OD (in)	WT (lbs/ft)
	Production	4 1/2	10.50
	String Grade	J-55	Top Connection
	Set Depth (ftKB)	1,236.0	
Cement			
22	Description	Type	String
	Surface Casing Cement	casing	Surface, 129.0ftKB
28	Comment		
	CMT CSG W/55 SX CMT. CIRC 4 BBLs CMT TO SURF.		
34	Description	Type	String
	Production Casing Cement	casing	Production, 1,236.0ftKB
	Comment		
	CMTD CSG W/155 SX CMT. CIRC 15 BBLs CMT TO SURF.		
129	Perforations		
130	Date	Top (ftKB)	Btm (ftKB)
		1,035.0	1,044.0
1,003	Shot Dens (shots/ft)	Hole Diameter (in)	Phasing (°)
	Zone	String	Set Depth (ftKB)
	Pictured Cliffs		
Tubing Strings			
1,009	Tubing Description	Run Date	Set Depth (ftKB)
	Tubing - Production	2/6/2009	1,111.4
Tubing Components			
1,034	Item Description	Jts	Model
	Tubing	33	T&C Upset
	OD (in)	WT (lbs/ft)	Grade
	2 3/8	4.70	J-55
	Top Thread	Len (ft)	Top (ftKB)
	8RD EUE	1,086.44	5.0
1,035	Item Description	Jts	Model
	Tubing Barrel Pump	1	
	OD (in)	WT (lbs/ft)	Grade
	2 3/8		
	Top Thread	Len (ft)	Top (ftKB)
	8RD EUE	20.00	1,091.4
1,038	Item Description	Jts	Model
	Rods		
1,038	Rod Description	Run Date	String Length (ft)
	Rod String	2/6/2009	1,093.40
	Set Depth (ftKB)	1,093.4	
1,044	Rod Components		
	Item Description	Jts	Model
	Polished Rod	1	
	OD (in)	Grade	Len (ft)
	1 1/4	D	22.00
	Top (ftKB)	Btm (ftKB)	
	0.0	22.0	
1,064	Item Description	Jts	Model
	Rod Sub	2	
	OD (in)	Grade	Len (ft)
	3/4	D	12.00
	Top (ftKB)	Btm (ftKB)	
	22.0	34.0	
1,068	Item Description	Jts	Model
	Sucker Rod	39	WCN-78
	OD (in)	Grade	Len (ft)
	3/4	D	975.00
	Top (ftKB)	Btm (ftKB)	
	34.0	1,009.0	
1,078	Item Description	Jts	Model
	Sinker Bar	1	
	OD (in)	Grade	Len (ft)
	1 1/2	K	25.00
	Top (ftKB)	Btm (ftKB)	
	1,009.0	1,034.0	
1,078	Item Description	Jts	Model
	Stabilizer Rod	1	
	OD (in)	Grade	Len (ft)
	7/8	D	4.00
	Top (ftKB)	Btm (ftKB)	
	1,034.0	1,038.0	
1,078	Item Description	Jts	Model
	Shear Tool - 21K	1	
	OD (in)	Grade	Len (ft)
	3/4		0.50
	Top (ftKB)	Btm (ftKB)	
	1,038.0	1,038.5	
1,078	Item Description	Jts	Model
	Sinker Bar	1	
	OD (in)	Grade	Len (ft)
	1 1/2	K	25.00
	Top (ftKB)	Btm (ftKB)	
	1,038.5	1,063.5	
1,078	Item Description	Jts	Model
	Stabilizer Rod	1	
	OD (in)	Grade	Len (ft)
	7/8	D	4.00
	Top (ftKB)	Btm (ftKB)	
	1,063.5	1,067.5	
1,092	Item Description	Jts	Model
	Sinker Bar	1	
	OD (in)	Grade	Len (ft)
	1 1/2	K	25.00
	Top (ftKB)	Btm (ftKB)	
	1,067.5	1,092.5	
1,092	Item Description	Jts	Model
	Spiral Rod Guide	1	
	OD (in)	Grade	Len (ft)
	3/4		0.40
	Top (ftKB)	Btm (ftKB)	
	1,092.5	1,092.9	
1,092	Item Description	Jts	Model
	On-Off Tool	1	
	OD (in)	Grade	Len (ft)
	3/4		0.50
	Top (ftKB)	Btm (ftKB)	
	1,092.9	1,093.4	
Stimulations & Treatments			
1,093	Frac Start Date	Top Perf (ft...)	Bottom Pe...
	7/8/2004		
	V (slurry) (...)	Total Prop...	AIR (b...)
			39
	ATP (psi)	MTP (psi)	ISIP (psi)
	1,100.0		
1,093	Comment		
1,094			
1,112			
1,200			
1,236			
1,250			

PBTD, 1,200

TD, 1,250

KB: 5,636'
GL: 5,631'
KB CORR: 5'



**UNITED STATES DEPARTMENT OF THE INTERIOR
BUREAU OF LAND MANAGEMENT
FARMINGTON DISTRICT OFFICE
6251 COLLEGE BLVD.
FARMINGTON, NEW MEXICO 87402**

Attachment to notice of
Intention to Abandon:

Re: Permanent Abandonment
Well: 3 Navajo 28

CONDITIONS OF APPROVAL

1. Plugging operations authorized are subject to the attached "General Requirements for Permanent Abandonment of Wells on Federal and Indian Lease."
2. Farmington Office is to be notified at least 24 hours before the plugging operations commence (505) 564-7750.
3. The following modifications to your plugging program are to be made:
 - a) Bring the top of the Pictured Cliffs/Fruitland plug to 636'.
 - b) You are required to have H2S monitoring equipment and personnel on location during plugging operations.

You are also required to place cement excesses per 4.2 and 4.4 of the attached General Requirements.

Office Hours: 7:45 a.m. to 4:30 p.m.