

District I  
1625 N. French Dr., Hobbs, NM 88240  
District II  
811 S. First St., Artesia, NM 88210  
District III  
1000 Rio Brazos Road, Aztec, NM 87410  
District IV  
1220 S. St. Francis Dr., Santa Fe, NM 87505

State of New Mexico  
Energy Minerals and Natural Resources

Oil Conservation Division  
1220 South St. Francis Dr.  
Santa Fe, NM 87505

Form C-141  
Revised August 8, 2011

Submit 1 Copy to appropriate District Office in  
accordance with 19.15.29 NMAC.

**Release Notification and Corrective Action**

**OPERATOR**

☐ Initial Report ☒ Final Report

Name of Company <b>ConocoPhillips Company</b>	Contact <b>Ashley Maxwell</b>	
Address <b>3401 E. 30th St., Farmington, NM 87402</b>	Telephone No. <b>505-324-5169</b>	
Facility Name <b>San Juan 32-8 Unit 263A</b>	Facility Type <b>Gas Well</b>	
Surface Owner <b>Federal</b>	Mineral Owner <b>Federal</b>	API No. <b>3004532796</b> Lease # <b>SF-079380</b>

**LOCATION OF RELEASE**

Unit Letter	Section	Township	Range	Feet from the	North/South Line	Feet from the	East/West Line	County
<b>P</b>	<b>15</b>	<b>32N</b>	<b>08W</b>	<b>999'</b>	<b>South</b>	<b>1152'</b>	<b>East</b>	<b>San Juan County</b>

**Latitude 36.97922° N Longitude -107.6571° W**

**NATURE OF RELEASE**

Type of Release <b>Produced Water</b>	Volume of Release <b>5.2 BBL</b>	Volume Recovered <b>5 BBL</b>
Source of Release <b>Water Tank</b>	Date and Hour of Occurrence <b>Unknown</b>	Date and Hour of Discovery <b>6/23/2012 8:00 a.m.</b>
Was Immediate Notice Given? <input type="checkbox"/> Yes <input type="checkbox"/> No <input checked="" type="checkbox"/> Not Required	If YES, To Whom? <b>RCVD JAN 16 '13</b>	
By Whom?	Date and Hour	<b>OIL CONS. DIV.</b>
Was a Watercourse Reached? <input type="checkbox"/> Yes <input checked="" type="checkbox"/> No	If YES, Volume Impacting the Watercourse. <b>DIST. 3</b>	

If a Watercourse was Impacted, Describe Fully.\*

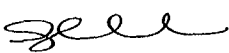
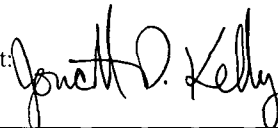
Describe Cause of Problem and Remedial Action Taken.\*

A dead battery caused the transfer pump not to work properly resulting in 5.2 BBL produced water running over the top of the tank. Release was contained within the berm. A water truck removed 5 BBL from the berm. Water tank will be scheduled to be cleaned. Soil will be continually raked.

Describe Area Affected and Cleanup Action Taken.\*

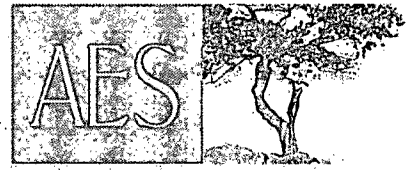
COPC will assess the soil and determine a path forward for clean-up, if necessary. **Samples were collected and analytical results for 8021, 8015, and chlorides. The results for 8021 and 8015 are below NMOCD Guidelines for Remediation of Leaks, Spills and Release; however, chlorides exceed the guidelines at 290 ppm. Permission to leave in place and submit a final C-141 was approved by Brandon Powell, OCD on September 28, 2012 and Sherrie Landon, BLM on October 30, 2012 based on depth to ground water being at 100'.**

I hereby certify that the information given above is true and complete to the best of my knowledge and understand that pursuant to NMOCD rules and regulations all operators are required to report and/or file certain release notifications and perform corrective actions for releases which may endanger public health or the environment. The acceptance of a C-141 report by the NMOCD marked as "Final Report" does not relieve the operator of liability should their operations have failed to adequately investigate and remediate contamination that pose a threat to ground water, surface water, human health or the environment. In addition, NMOCD acceptance of a C-141 report does not relieve the operator of responsibility for compliance with any other federal, state, or local laws and/or regulations.

<b>OIL CONSERVATION DIVISION</b>	
Signature: 	Approved by Environmental Specialist: 
Printed Name: Ashley Maxwell	
Title: Field Environmental Specialist	Approval Date: <b>1/30/2013</b> Expiration Date:
E-mail Address: ashley.p.wethington@conocophillips.com	Conditions of Approval:
Date: November 1, 2012 Phone: 505-324-5169	Attached <input type="checkbox"/>

\* Attach Additional Sheets If Necessary

n5K1303027709



Animas Environmental Services, LLC

[www.animasenvironmental.com](http://www.animasenvironmental.com)

624 E. Comanche  
Farmington, NM 87401  
505-564-2281

Durango, Colorado  
970-403-3274

January 11, 2013

Ashley Maxwell  
ConocoPhillips  
San Juan Business Unit  
Office 216-2  
5525 Hwy 64  
Farmington, New Mexico 87401

**RE: Produced Water Release Report  
San Juan 32-8 #263A  
San Juan County, New Mexico**

Dear Ms. Maxwell:

Animas Environmental Services, LLC (AES) is pleased to provide the final report associated with a five barrel (BBL) produced water release at the ConocoPhillips (CoP) San Juan 32-8 #263A, located in San Juan County, New Mexico.

---

## 1.0 Site Information

### 1.1 Location

Site Name – San Juan 32-8 #263A

Legal Description – SE¼ SE¼, Section 15, T32N, R8W, San Juan County, New Mexico

Well Latitude/Longitude – N36.97916 and W107.65774, respectively

Release Latitude/Longitude – N36.97906 and W107.65800, respectively

Land Jurisdiction – Bureau of Land Management (BLM)

Figure 1. Topographic Site Location Map

Figure 2. Aerial Site Map, August 2012

### 1.2 NMOCD Ranking

Prior to site work, the New Mexico Oil Conservation Division (NMOCD) database was reviewed, and a Cathodic Protection Report dated March 2007 reported the depth to groundwater as 100 feet below ground surface (bgs). The New Mexico Office of the State Engineer (NMOSE) database was reviewed for nearby water wells, and no registered water wells were reported to be located within 1,000 feet of the location. Additionally, Google Earth and the New Mexico Tech Petroleum Recovery Research Center online mapping tool (<http://ford.nmt.edu/react/project.html>) were accessed to aid in the identification of downgradient surface water.

Once on site, AES personnel further assessed the ranking using topographical interpretation, Global Positioning System (GPS) elevation readings, and visual reconnaissance. AES personnel concluded that depth to groundwater at the site was greater than 100 feet bgs. A tributary to the wash in Wildcat Canyon is located approximately 460 feet southeast of the location. Based on this information, the location was assessed a ranking score of 10 per *NMOCD Guidelines for Leaks, Spills, and Releases* (August 1993).

### 1.3 Produced Water Release Assessment

AES was initially contacted by Ashley Maxwell, CoP representative, on August 21, 2012, and on August 30, 2012, Heather Woods and Zach Trujillo of AES traveled to the location. AES personnel collected one 5-point composite soil sample within the produced water tank secondary containment berm for laboratory analysis.

---

## 2.0 Soil Sampling

On August 30, 2012, AES personnel collected one 5-point composite soil sample within the release area around the produced water tank. Soil sample SC-1 was submitted for confirmation laboratory analysis. Soil sample locations are included on Figure 2.

### 2.1 Laboratory Analyses

The composite soil sample collected for laboratory analysis was placed into a new, clean, laboratory-supplied container, which was then labeled, placed on ice, and logged onto a sample chain of custody record. The sample was maintained on ice until delivery to the analytical laboratory, Hall Environmental Analysis Laboratory (Hall), in Albuquerque, New Mexico. Soil sample SC-1 was laboratory analyzed for:

- Benzene, toluene, ethylbenzene, and xylene (BTEX) per U.S. Environmental Protection Agency (USEPA) Method 8021B;
- Total petroleum hydrocarbons (TPH) for gasoline range organics (GRO) and diesel range organics (DRO) per USEPA Method 8015B;
- Chloride per USEPA Method 300.0.

### 2.2 Laboratory Analytical Results

Laboratory analytical results reported benzene and total BTEX concentrations in SC-1 as below the laboratory detection limits of 0.050 mg/kg and 0.25 mg/kg, respectively. TPH concentrations were reported at less than 5.0 mg/kg GRO and less than 9.9 mg/kg DRO. The laboratory chloride concentration was reported at 290 mg/kg. Laboratory analytical

results are summarized in Table 1 and included on Figure 2. The laboratory analytical report is attached.

Table 1. Soil Laboratory Analytical Results  
San Juan 32-8 #263A Produced Water Release, August 2012

Sample ID	Date Sampled	Depth (ft)	Benzene (mg/kg)	BTEX (mg/kg)	TPH-GRO (mg/kg)	TPH-DRO (mg/kg)	Chlorides (mg/kg)
NMOCD Action Level			10	50	1,000*		250
SC-1	08/30/2012	0.25	<0.050	<0.25	<5.0	<9.9	290

\*Action level determined by the NMOCD ranking score per *NMOCD Guidelines for Leaks, Spills, and Releases* (August 1993).

### 3.0 Conclusions and Recommendations

NMOCD action levels for releases are specified in *NMOCD's Guidelines for Leaks, Spills, and Releases* (August 1993), and the release was assigned a ranking score of 10. Benzene and total BTEX concentrations in SC-1 were reported below NMOCD action levels of 10 mg/kg and 50 mg/kg, respectively. Additionally, the TPH concentration as GRO/DRO was reported below the NMOCD action level of 1,000 mg/kg. However, the chloride concentration in SC-1 exceeded the NMOCD action level of 250 mg/kg with 290 mg/kg.

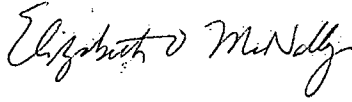
Based on laboratory analytical results of produced water contaminated soils at the San Juan 32-8 #263A, benzene, total BTEX, and TPH concentrations were below applicable NMOCD action levels. The chloride concentration exceeded the applicable NMOCD action level, but CoP was granted permission to leave soils in place by Brandon Powell of NMOCD on September 28, 2012, and by Sherrie Landon of BLM on September 30, 2012. No further work is recommended.

If you have any questions about this report or site conditions, please do not hesitate to contact Deborah Watson at (505) 564-2281.

Sincerely,



Kelsey Christiansen  
Environmental Scientist



Elizabeth McNally, P.E.

Attachments:

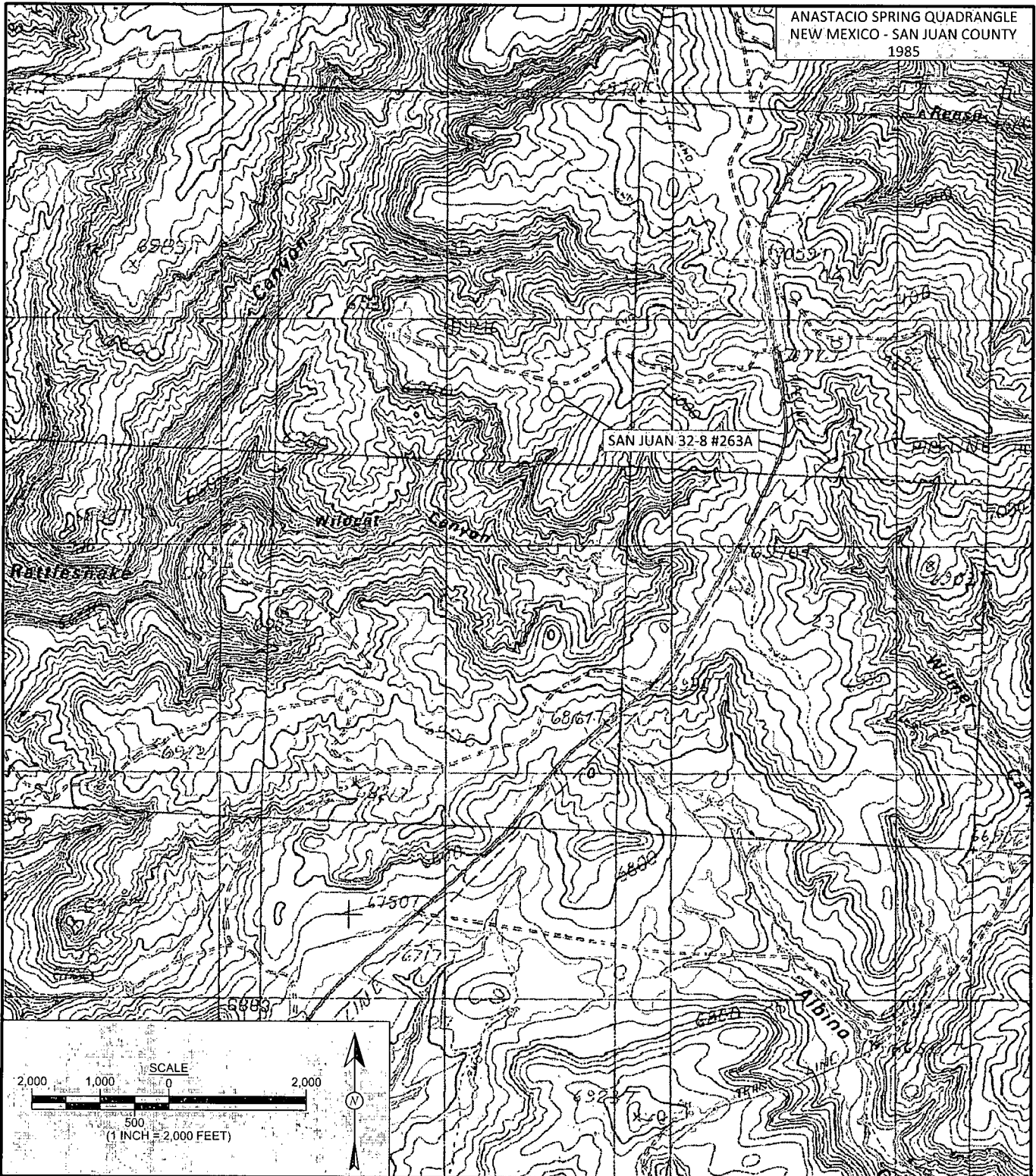
Figure 1. Topographic Site Location Map

Figure 2. Aerial Site Map, August 2012

Hall Analytical Report 1208D99

R:\Animas 2000\Dropbox\2013 Projects\ConocoPhillips\SJ 32-8 #263A\SJ 32-8 #263 A Produced Water  
Release Report 011113.docx

ANASTACIO SPRING QUADRANGLE  
NEW MEXICO - SAN JUAN COUNTY  
1985



<b>DRAWN BY:</b> K. Christiansen	<b>DATE DRAWN:</b> November 6, 2012
<b>REVISIONS BY:</b> C. Lameman	<b>DATE REVISED:</b> November 1, 2012
<b>CHECKED BY:</b> D. Watson	<b>DATE CHECKED:</b> November 1, 2012
<b>APPROVED BY:</b> E. McNally	<b>DATE APPROVED:</b> November 1, 2012

**FIGURE 1**  
**TOPOGRAPHIC SITE LOCATION MAP**  
ConocoPhillips  
SAN JUAN 32-8 #263A  
SAN JUAN COUNTY, NEW MEXICO  
SE¼ SE¼, SECTION 15, T32N, R8W  
N36.97916, W107.65774

# LEGEND

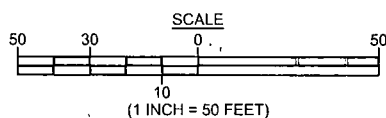
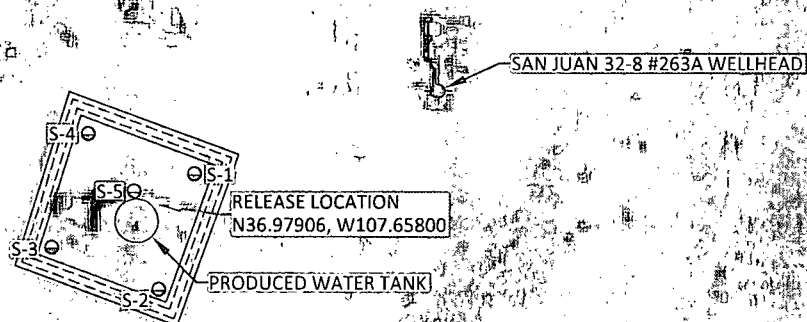
- ⊙ SAMPLE LOCATIONS
- ▤▤▤ SECONDARY CONTAINMENT

## Laboratory Analytical Results

Sample ID	Date	Benzene (mg/kg)	Total BTEX (mg/kg)	TPH - GRO (mg/kg)	TPH - DRO (mg/kg)	Chlorides (mg/kg)
NMOCD ACTION LEVEL		10	50	1,000		250
SC-1	11/5/12	<0.050	<0.25	<5.0	<9.9	290

SC-1 WAS A 5-POINT COMPOSITE OF S-1 THROUGH S-5.

SAMPLE WAS ANALYZED PER EPA METHOD 8021B, 8015B AND 300.0.



AERIAL SOURCE: © 2012 MICROSOFT CORPORATION - AVAILABLE EXCLUSIVELY BY DIGITALGLOBE



Animas Environmental Services, LLC

DRAWN BY:

C. Lameman

DATE DRAWN:

January 2, 2013

REVISIONS BY:

C. Lameman

DATE REVISED:

January 2, 2013

CHECKED BY:

D. Watson

DATE CHECKED:

January 2, 2013

APPROVED BY:

E. McNally

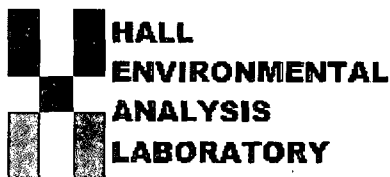
DATE APPROVED:

January 2, 2013

## FIGURE 2

### AERIAL SITE MAP AUGUST 2012

ConocoPhillips  
SAN JUAN 32-8 #263A  
SAN JUAN COUNTY, NEW MEXICO  
SE¼ SE¼, SECTION 15, T32N, R8W  
N36.97916, W107.65774



*Hall Environmental Analysis Laboratory*  
4901 Hawkins NE  
Albuquerque, NM 87109  
TEL: 505-345-3975 FAX: 505-345-4107  
Website: [www.hallenvironmental.com](http://www.hallenvironmental.com)

September 10, 2012

Debbie Watson  
Animas Environmental Services  
624 East Comanche  
Farmington, NM 87401  
TEL: (505) 486-4071  
FAX

RE: SJ 32-8 #263A

OrderNo.: 1208D99

Dear Debbie Watson:

Hall Environmental Analysis Laboratory received 1 sample(s) on 8/31/2012 for the analyses presented in the following report.

These were analyzed according to EPA procedures or equivalent. To access our accredited tests please go to [www.hallenvironmental.com](http://www.hallenvironmental.com) or the state specific web sites. See the sample checklist and/or the Chain of Custody for information regarding the sample receipt temperature and preservation. Data qualifiers or a narrative will be provided if the sample analysis or analytical quality control parameters require a flag. All samples are reported as received unless otherwise indicated. Lab measurement of analytes considered field parameters that require analysis within 15 minutes of sampling such as pH and residual chlorine are qualified as being analyzed outside of the recommended holding time.

Please don't hesitate to contact HEAL for any additional information or clarifications.

Sincerely,

Andy Freeman  
Laboratory Manager  
4901 Hawkins NE  
Albuquerque, NM 87109



**Analytical Report**

Lab Order 1208D99

Date Reported: 9/10/2012

**Hall Environmental Analysis Laboratory, Inc.****CLIENT:** Animas Environmental Services**Client Sample ID:** SC-1**Project:** SJ 32-8 #263A**Collection Date:** 8/30/2012 2:45:00 PM**Lab ID:** 1208D99-001**Matrix:** SOIL**Received Date:** 8/31/2012 10:25:00 AM

Analyses	Result	RL	Qual	Units	DF	Date Analyzed
<b>EPA METHOD 8015B: DIESEL RANGE ORGANICS</b>						Analyst: JPM
Diesel Range Organics (DRO)	ND	9.9		mg/Kg	1	9/4/2012 9:25:39 AM
Surr: DNOP	115	77.6-140		%REC	1	9/4/2012 9:25:39 AM
<b>EPA METHOD 8015B: GASOLINE RANGE</b>						Analyst: NSB
Gasoline Range Organics (GRO)	ND	5.0		mg/Kg	1	8/31/2012 2:50:38 PM
Surr: BFB	100	84-116		%REC	1	8/31/2012 2:50:38 PM
<b>EPA METHOD 8021B: VOLATILES</b>						Analyst: NSB
Benzene	ND	0.050		mg/Kg	1	8/31/2012 2:50:38 PM
Toluene	ND	0.050		mg/Kg	1	8/31/2012 2:50:38 PM
Ethylbenzene	ND	0.050		mg/Kg	1	8/31/2012 2:50:38 PM
Xylenes, Total	ND	0.10		mg/Kg	1	8/31/2012 2:50:38 PM
Surr: 4-Bromofluorobenzene	100	80-120		%REC	1	8/31/2012 2:50:38 PM
<b>EPA METHOD 300.0: ANIONS</b>						Analyst: SRM
Chloride	290	7.5		mg/Kg	5	9/6/2012 1:48:27 PM

**Qualifiers:**

- \* Value exceeds Maximum Contaminant Level.
- E Value above quantitation range
- J Analyte detected below quantitation limits
- R RPD outside accepted recovery limits
- S Spike Recovery outside accepted recovery limits

- B Analyte detected in the associated Method Blank
- H Holding times for preparation or analysis exceeded
- ND Not Detected at the Reporting Limit
- RL Reporting Detection Limit

# QC SUMMARY REPORT

Hall Environmental Analysis Laboratory, Inc.

WO#: 1208D99

10-Sep-12

Client: Animas Environmental Services

Project: SJ 32-8 #263A

Sample ID	LCS-3638	SampType	LCS	TestCode	EPA Method 300.0: Anions					
Client ID	LCSS	Batch ID	3638	RunNo	5348					
Prep Date	9/6/2012	Analysis Date	9/6/2012	SeqNo	152318	Units	mg/Kg			
Analyte	Result	PQL	SPK value	SPK Ref Val	%REC	LowLimit	HighLimit	%RPD	RPDLimit	Qual
Chloride	14	1.5	15.00	0	93.4	90	110			

## Qualifiers:

- \* Value exceeds Maximum Contaminant Level.
- E Value above quantitation range
- J Analyte detected below quantitation limits
- R RPD outside accepted recovery limits

- B Analyte detected in the associated Method Blank
- H Holding times for preparation or analysis exceeded
- ND Not Detected at the Reporting Limit
- RL Reporting Detection Limit

# QC SUMMARY REPORT

Hall Environmental Analysis Laboratory, Inc.

WO#: 1208D99

10-Sep-12

Client: Animas Environmental Services

Project: SJ 32-8 #263A

Sample ID	MB-3578		SampType:	MBLK		TestCode:	EPA Method 8015B: Diesel Range Organics				
Client ID:	PBS		Batch ID:	3578		RunNo:	5271				
Prep Date:	8/31/2012		Analysis Date:	9/4/2012		SeqNo:	149993		Units: mg/Kg		
Analyte	Result	PQL	SPK value	SPK Ref Val	%REC	LowLimit	HighLimit	%RPD	RPDLimit	Qual	
Diesel Range Organics (DRO)	ND	10									
Surr: DNOP	11		10.00		113	77.6	140				

Sample ID	LCS-3578		SampType:	LCS		TestCode:	EPA Method 8015B: Diesel Range Organics				
Client ID:	LCSS		Batch ID:	3578		RunNo:	5271				
Prep Date:	8/31/2012		Analysis Date:	9/4/2012		SeqNo:	149994		Units: mg/Kg		
Analyte	Result	PQL	SPK value	SPK Ref Val	%REC	LowLimit	HighLimit	%RPD	RPDLimit	Qual	
Diesel Range Organics (DRO)	37	10	50.00	0	73.7	52.6	130				
Surr: DNOP	4.3		5.000		85.6	77.6	140				

## Qualifiers:

- \* Value exceeds Maximum Contaminant Level.
- E Value above quantitation range
- J Analyte detected below quantitation limits
- R RPD outside accepted recovery limits

- B Analyte detected in the associated Method Blank
- H Holding times for preparation or analysis exceeded
- ND Not Detected at the Reporting Limit
- RL Reporting Detection Limit

# QC SUMMARY REPORT

## Hall Environmental Analysis Laboratory, Inc.

WO#: 1208D99

10-Sep-12

Client: Animas Environmental Services

Project: SJ 32-8 #263A

Sample ID	5ML RB	SampType:	MBLK	TestCode:	EPA Method 8015B: Gasoline Range					
Client ID:	PBS	Batch ID:	R5269	RunNo:	5269					
Prep Date:		Analysis Date:	8/31/2012	SeqNo:	149947	Units:	mg/Kg			
Analyte	Result	PQL	SPK value	SPK Ref Val	%REC	LowLimit	HighLimit	%RPD	RPDLimit	Qual
Gasoline Range Organics (GRO)	ND	5.0								
Surr: BFB	970		1000		96.9	84	116			

Sample ID	2.5UG GRO LCSB	SampType:	LCS	TestCode:	EPA Method 8015B: Gasoline Range					
Client ID:	LCSS	Batch ID:	R5269	RunNo:	5269					
Prep Date:		Analysis Date:	8/31/2012	SeqNo:	149948	Units:	mg/Kg			
Analyte	Result	PQL	SPK value	SPK Ref Val	%REC	LowLimit	HighLimit	%RPD	RPDLimit	Qual
Gasoline Range Organics (GRO)	26	5.0	25.00	0	103	74	117			
Surr: BFB	1000		1000		99.8	84	116			

Sample ID	1208D99-001AMS	SampType:	MS	TestCode:	EPA Method 8015B: Gasoline Range					
Client ID:	SC-1	Batch ID:	R5269	RunNo:	5269					
Prep Date:		Analysis Date:	8/31/2012	SeqNo:	149952	Units:	mg/Kg			
Analyte	Result	PQL	SPK value	SPK Ref Val	%REC	LowLimit	HighLimit	%RPD	RPDLimit	Qual
Gasoline Range Organics (GRO)	17	5.0	16.03	0	107	70	130			
Surr: BFB	670		641.0		105	84	116			

Sample ID	1208D99-001AMSD	SampType:	MSD	TestCode:	EPA Method 8015B: Gasoline Range					
Client ID:	SC-1	Batch ID:	R5269	RunNo:	5269					
Prep Date:		Analysis Date:	8/31/2012	SeqNo:	149953	Units:	mg/Kg			
Analyte	Result	PQL	SPK value	SPK Ref Val	%REC	LowLimit	HighLimit	%RPD	RPDLimit	Qual
Gasoline Range Organics (GRO)	17	5.0	16.03	0	105	70	130	1.21	22.1	
Surr: BFB	680		641.0		107	84	116	0	0	

### Qualifiers:

- \* Value exceeds Maximum Contaminant Level.
- E Value above quantitation range
- J Analyte detected below quantitation limits
- R RPD outside accepted recovery limits

- B Analyte detected in the associated Method Blank
- H Holding times for preparation or analysis exceeded
- ND Not Detected at the Reporting Limit
- RL Reporting Detection Limit

# QC SUMMARY REPORT

Hall Environmental Analysis Laboratory, Inc.

WO#: 1208D99

10-Sep-12

Client: Animas Environmental Services

Project: SJ 32-8 #263A

Sample ID	5ML RB	SampType:	MBLK	TestCode:	EPA Method 8021B: Volatiles					
Client ID:	PBS	Batch ID:	R5269	RunNo:	5269					
Prep Date:		Analysis Date:	8/31/2012	SeqNo:	149956	Units:	mg/Kg			
Analyte	Result	PQL	SPK value	SPK Ref Val	%REC	LowLimit	HighLimit	%RPD	RPDLimit	Qual
Benzene	ND	0.050								
Toluene	ND	0.050								
Ethylbenzene	ND	0.050								
Xylenes, Total	ND	0.10								
Surr: 4-Bromofluorobenzene	0.98		1.000		97.7	80	120			

Sample ID	100NG BTEX LCS	SampType:	LCS	TestCode:	EPA Method 8021B: Volatiles					
Client ID:	LCSS	Batch ID:	R5269	RunNo:	5269					
Prep Date:		Analysis Date:	8/31/2012	SeqNo:	149957					
				Units:	mg/Kg					
Analyte	Result	PQL	SPK value	SPK Ref Val	%REC	LowLimit	HighLimit	%RPD	RPDLimit	Qual
Benzene	1.0	0.050	1.000	0	104	76.3	117			
Toluene	1.1	0.050	1.000	0	107	80	120			
Ethylbenzene	1.1	0.050	1.000	0	108	77	116			
Xylenes, Total	3.2	0.10	3.000	0	108	76.7	117			
Surr: 4-Bromofluorobenzene	1.1		1.000		105	80	120			

## Qualifiers:

- \* Value exceeds Maximum Contaminant Level.
- E Value above quantitation range
- J Analyte detected below quantitation limits
- R RPD outside accepted recovery limits

- B Analyte detected in the associated Method Blank
- H Holding times for preparation or analysis exceeded
- ND Not Detected at the Reporting Limit
- RL Reporting Detection Limit



4901 Hawkins NE  
Albuquerque, NM 87105  
TEL: 505-345-3975 FAX: 505-345-4101  
Website: www.hallenvironmental.com

## Sample Log-In Check List

Client Name: Animas Environmental Work Order Number: 1208D99  
Received by/date: AT 08/31/12  
Logged By: Anne Thorne 8/31/2012 10:25:00 AM AT  
Completed By: Anne Thorne 8/31/2012 AT  
Reviewed By: AT 08/31/12

### Chain of Custody

1. Were seals intact? Yes ☐ No ☐ Not Present ☒  
2. Is Chain of Custody complete? Yes ☒ No ☐ Not Present ☐  
3. How was the sample delivered? Courier

### Log In

4. Coolers are present? (see 19. for cooler specific information) Yes ☒ No ☐ NA ☐  
5. Was an attempt made to cool the samples? Yes ☒ No ☐ NA ☐  
6. Were all samples received at a temperature of  $>0^{\circ}\text{C}$  to  $6.0^{\circ}\text{C}$ ? Yes ☒ No ☐ NA ☐  
7. Sample(s) in proper container(s)? Yes ☒ No ☐  
8. Sufficient sample volume for indicated test(s)? Yes ☒ No ☐  
9. Are samples (except VOA and ONG) properly preserved? Yes ☒ No ☐  
10. Was preservative added to bottles? Yes ☐ No ☒ NA ☐  
11. VOA vials have zero headspace? Yes ☐ No ☐ No VOA Vials ☒  
12. Were any sample containers received broken? Yes ☐ No ☒  
13. Does paperwork match bottle labels?  
(Note discrepancies on chain of custody) Yes ☒ No ☐  
14. Are matrices correctly identified on Chain of Custody? Yes ☒ No ☐  
15. Is it clear what analyses were requested? Yes ☒ No ☐  
16. Were all holding times able to be met?  
(If no, notify customer for authorization.) Yes ☒ No ☐  

# of preserved bottles checked for pH: \_\_\_\_\_  
( $<2$  or  $>12$  unless noted)  
Adjusted? \_\_\_\_\_  
Checked by: \_\_\_\_\_

### Special Handling (if applicable)

17. Was client notified of all discrepancies with this order? Yes ☐ No ☐ NA ☒

Person Notified:	_____	Date:	_____
By Whom:	_____	Via:	<input type="checkbox"/> eMail <input type="checkbox"/> Phone <input type="checkbox"/> Fax <input type="checkbox"/> In Person
Regarding:	_____		
Client Instructions:	_____		

18. Additional remarks:

### 19. Cooler Information

Cooler No	Temp °C	Condition	Seal Intact	Seal No	Seal Date	Signed By
1	1.4	Good	Yes			

<b>Chain-of-Custody Record</b>		Turn-Around Time:	
Client: <u>Animas Environmental Services</u>		<input checked="" type="checkbox"/> Standard <input type="checkbox"/> Rush	
Mailing Address: <u>624 E. Comanche</u>		Project Name: <u>SJ 32-B #263A</u>	
<u>Farmington, NM 87401</u>		Project #:	
Phone #: <u>505-564-2281</u>		Project Manager:	
email or Fax#:		<u>D. Watson</u>	
QA/QC Package:		Sampler: <u>H. Woods</u>	
<input checked="" type="checkbox"/> Standard <input type="checkbox"/> Level 4 (Full Validation)		On Ice: <input checked="" type="checkbox"/> Yes <input type="checkbox"/> No	
Accreditation		Sample Temperature: <u>14</u>	
<input type="checkbox"/> NELAP <input type="checkbox"/> Other _____			
<input type="checkbox"/> EDD (Type) _____			

☒ Standard      ☐ Rush

SJ 32-B #263A

Project #:

**Project Manager:**

Sampler: H. Woods

On Ice: ☒ Yes ☐ No

Sample Temperature: 12

[illegible]

[www.hallenvironmental.com](http://www.hallenvironmental.com)

4901 Hawkins NE - Albuquerque, NM 87109

Tel. 505-345-3975 Fax: 505-345-4107

### Analysis Request

X	BTEX + <del>PAHs</del> (8021)
	BTEX + MTBE + TPH (Gas only)
X	TPH Method 8015B (Gas/Diesel) <i>Gas/PAH</i>
	TPH (Method 418.1)
	EDB (Method 504.1)
	8310 (PNA or PAH)
	RCRA 8 Metals
	Anions (F, Cl, NO <sub>3</sub> , NO <sub>2</sub> , PO <sub>4</sub> , SO <sub>4</sub> )
	8081 Pesticides / 8082 PCB's
	8260B (VOA)
	8270 (Semi-VOA)
X	<i>300, chlorides</i>

Date:	Time:	Relinquished by:	Received by:	Date	Time
8/30/12	1653	Leathan M. Woods	Christine Wallen	8/30/12	1653
Date:	Time:	Relinquished by:	Received by:	Date	Time
8/30/12	1721	Christine Wallen	Christine Wallen	08/31/12	1025

Remarks: Bill to Conoco Phillips

WD# 9152135

Area: 22

Supervisor: Devin Leboeuf

USER ID: LINDA J.  
Requested by: Ashley  
Maxwell