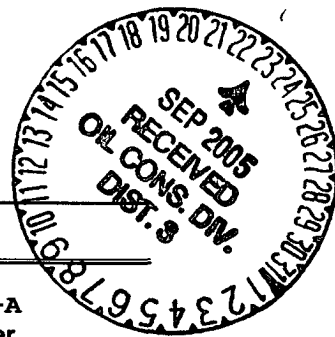


UNITED STATES
DEPARTMENT OF THE INTERIOR
BUREAU OF LAND MANAGEMENT

APPLICATION FOR PERMIT TO DRILL, DEEPEN, OR PLUG BACK



2005 JUL 18 PM 1:39

RECEIVED
OTO FARMINGTON NM

1a. Type of Work DRILL	5. Lease Number NMSF-079050-A Unit Reporting Number	
1b. Type of Well GAS	6. If Indian, All. or Tribe	
2. Operator BURLINGTON RESOURCES Oil & Gas Company	7. Unit Agreement Name San Juan 28-6 Unit	
3. Address & Phone No. of Operator PO Box 4289, Farmington, NM 87499 (505) 326-9700	8. Farm or Lease Name	
4. Location of Well Unit P (SESE), 855' ^{FSL} FNL , 1025' FEL Latitude 36° 37.6429' N Longitude 107° 27.9817' W	9. Well Number #437S 10. Field, Pool, Wildcat Basin Fruitland Coal 11. Sec., Twn, Rge, Mer. (NMPM) Sec. 28, T28N, R06W API # 30-039- 29601	
14. Distance in Miles from Nearest Town 30.5 miles to Post Office in Blanco, NM	12. County Rio Arriba	13. State NM
15. Distance from Proposed Location to Nearest Property or Lease Line 855'		
16. Acres in Lease	17. Acres Assigned to Well 320 E2	
18. Distance from Proposed Location to Nearest Well, Drig, Compl, or Applied for on this Lease 56' - San Juan 28-6 Unit #148M		
19. Proposed Depth 3564'	20. Rotary or Cable Tools Rotary	
21. Elevations (DF, FT, GR, Etc.) 6579' GL	22. Approx. Date Work will Start	
23. Proposed Casing and Cementing Program See Operations Plan attached		
24. Authorized by: <u>Amanda Sandora</u> Regulatory Compliance Assistant II	7-18-05 Date	

PERMIT NO.

APPROVAL DATE

APPROVED BY

TITLE

DATE

Archaeological Report attached

Threatened and Endangered Species Report attached

NOTE: This format is issued in lieu of U.S. BLM Form 3160-3

Title 18 U.S.C. Section 1001, makes it a crime for any person knowingly and willfully to make to any department or agency of the United States any false, fictitious or fraudulent statements or presentations as to any matter within its jurisdiction.

NMCCD

DISTRICT I
1025 N. French Dr., Hobbs, N.M. 88240

State of New Mexico
Energy, Minerals & Natural Resources Department

Form C-102
Revised August 15, 2000

DISTRICT II
611 South First, Artesia, N.M. 88210

DISTRICT III
1000 Rio Brazos Rd., Aztec, N.M. 87410

DISTRICT IV
2040 South Pacheco, Santa Fe, NM 87505

OIL CONSERVATION DIVISION

2040 South Pacheco
Santa Fe, NM 87505

Submit to Appropriate District Office
State Lease - 4 Copies
Fee Lease - 3 Copies

2005 JUL 18 PM 1 39

☐ AMENDED REPORT

WELL LOCATION AND ACREAGE DEDICATION PLAT

¹ API Number 30-039-	² Pool Code 71629	³ Pool Name OTO FARMING Basin Fruitland Coal
⁴ Property Code 7462	⁵ Property Name SAN JUAN 28-6 UNIT	⁶ Well Number 437S
⁷ OGRD No. 14538	⁸ Operator Name BURLINGTON RESOURCES OIL AND GAS COMPANY LP	⁹ Elevation 6579'

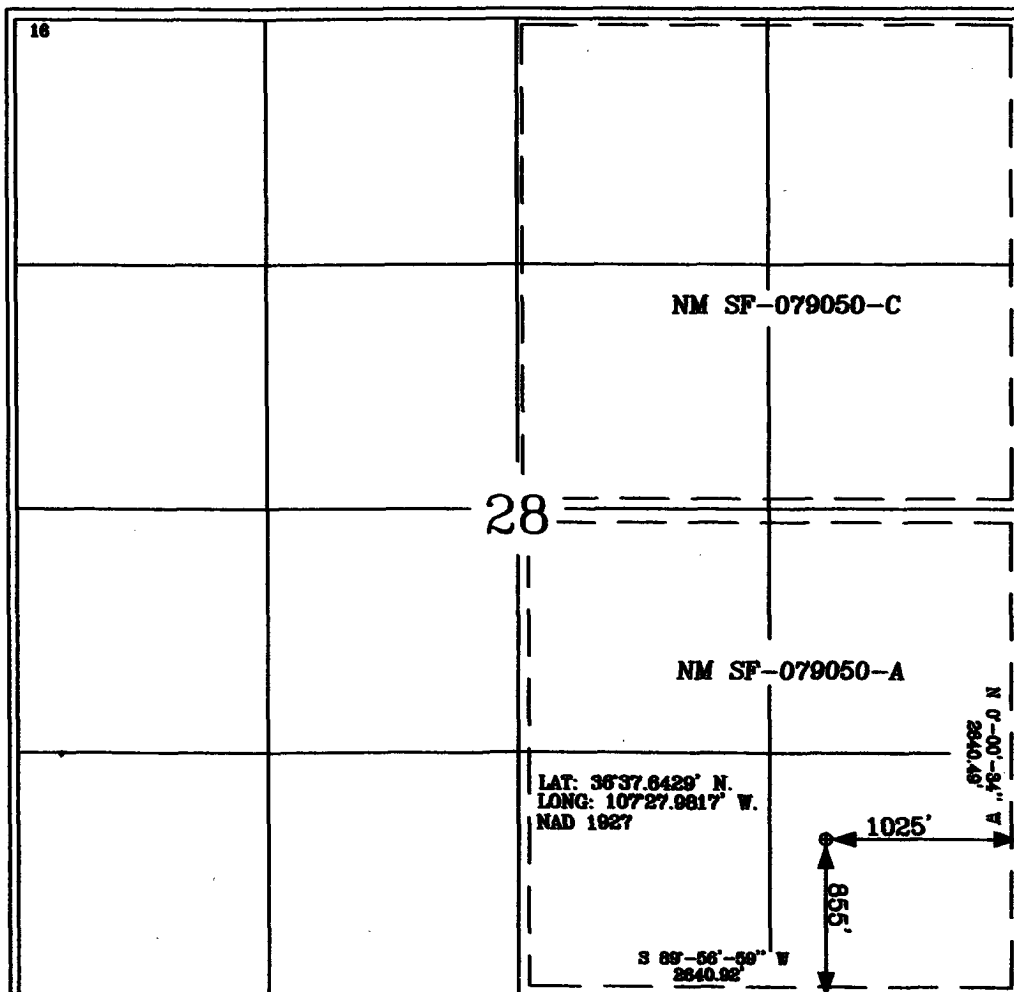
¹⁰ Surface Location

UL or lot no.	Section	Township	Range	Lot Idn	Feet from the	North/South line	Feet from the	East/West line	County
P	28	28-N	6-W		855'	SOUTH	1025'	EAST	RIO ARriba

¹¹ Bottom Hole Location If Different From Surface

UL or lot no.	Section	Township	Range	Lot Idn	Feet from the	North/South line	Feet from the	East/West line	County
¹² Dedicated Acres 320 E2 FC			¹³ Joint or Infill		¹⁴ Consolidation Code		¹⁵ Order No.		

NO ALLOWABLE WILL BE ASSIGNED TO THIS COMPLETION UNTIL ALL INTERESTS HAVE BEEN CONSOLIDATED
OR A NON-STANDARD UNIT HAS BEEN APPROVED BY THE DIVISION



17 OPERATOR CERTIFICATION

I hereby certify that the information contained herein is true and complete to the best of my knowledge and belief

Amanda Sandoval
Signature

Amanda Sandoval
Printed Name

Regulatory Assistant II
Title

6-6-05
Date

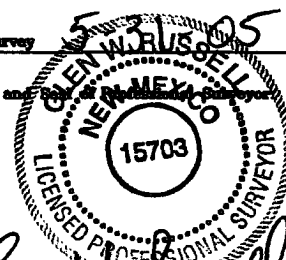
18 SURVEYOR CERTIFICATION

I hereby certify that the well location shown on this plat was plotted from field notes of actual surveys made by me or under my supervision, and that the same is true and correct to the best of my belief.

Date of Survey
6-6-05

Signature and Seal of Registered Surveyor

Carl W. Russell
Certificate Number 15703



Submit 3 Copies To Appropriate District Office

District I

1625 N. French Dr., Hobbs, NM 88240

District II

1301 W. Grand Ave., Artesia, NM 88210

District III

1000 Rio Brazos Rd., Aztec, NM 87410

District IV

1220 S. St. Francis Dr., Santa Fe, NM 87505

State of New Mexico

Energy, Minerals and Natural Resources

Form C-103

May 27, 2004

OIL CONSERVATION DIVISION

1220 South St. Francis Dr.
Santa Fe, NM 87505

SUNDRY NOTICES AND REPORTS ON WELLS
(DO NOT USE THIS FORM FOR PROPOSALS TO DRILL OR TO DEEPEN OR PLUG BACK TO A DIFFERENT RESERVOIR. USE "APPLICATION FOR PERMIT" (FORM C-101) FOR SUCH PROPOSALS.)

1. Type of Well:
Oil Well ☐ Gas Well ☒ Other

2. Name of Operator
BURLINGTON RESOURCES OIL & GAS COMPANY LP

3. Address of Operator
3401 E. 30TH STREET, FARMINGTON, NM 87402

4. Well Location
Unit Letter P : 855 feet from the North line and 1025 feet from the East line
Section 28 Township 28N Range 6W NMPM County San Juan

11. Elevation (Show whether DR, RKB, RT, GR, etc.)
6579' GR

Pit or Below-grade Tank Application ☒ or Closure ☐

Pit type New Drill Depth to Groundwater >100' Distance from nearest fresh water well >1000' Distance from nearest surface water >1000'
Pit Liner Thickness: na mil Below-Grade Tank: Volume bbls; Construction Material

12. Check Appropriate Box to Indicate Nature of Notice, Report or Other Data

NOTICE OF INTENTION TO:

PERFORM REMEDIAL WORK ☐ PLUG AND ABANDON ☐
TEMPORARILY ABANDON ☐ CHANGE PLANS ☐
PULL OR ALTER CASING ☐ MULTIPLE COMPL ☐

OTHER: New Drill ☒

SUBSEQUENT REPORT OF:

REMEDIAL WORK ☐ ALTERING CASING ☐
COMMENCE DRILLING OPNS. ☐ P AND A ☐
CASING/CEMENT JOB ☐

OTHER: ☐

13. Describe proposed or completed operations. (Clearly state all pertinent details, and give pertinent dates, including estimated date of starting any proposed work). SEE RULE 1103. For Multiple Completions: Attach wellbore diagram of proposed completion or recompletion.

Burlington Resources proposes to construct a new drilling pit and an associated vent/flare pit. Based on Burlington's interpretation of the Ecosphere's risk ranking criteria, the new drilling pit and vent/flare pit will be an unlined pit as detailed in Burlington's Revised Drilling / Workover Pit Construction / Operation Procedures dated November 11, 2004 on file at the NMOCD office. A portion of the vent/flare pit will be designed to manage fluids, and that portion will be unlined, as per the risk ranking criteria. Burlington Resources anticipates closing these pits according to the Drilling / Workover Pit Closure Procedure dated August 2, 2004 on file at the NMOCD office.

I hereby certify that the information above is true and complete to the best of my knowledge and belief. I further certify that any pit or below-grade tank has been/will be constructed or closed according to NMOCD guidelines ☐, a general permit ☒ or an (attached) alternative OCD-approved plan ☐.

SIGNATURE Amanda Sandoval TITLE Regulatory Specialist DATE 6/10/2005

Type or print name Amanda Sandoval E-mail address: asandoval@br-inc.com Telephone No. 505-326-9700
For State Use Only

APPROVED BY [Signature] TITLE DEPUTY OIL & GAS INSPECTOR, DIST. IV DATE SEP 23 2005
Conditions of Approval (if any):

SAN JUAN 28-6 UNIT #437S, 855' FSL & 1025' FEL
SECTION 28, T-28- N, R-6-W, NMPM, RIO ARriba COUNTY, NM
GROUND ELEVATION: 6579', DATE: MAY 3, 2005

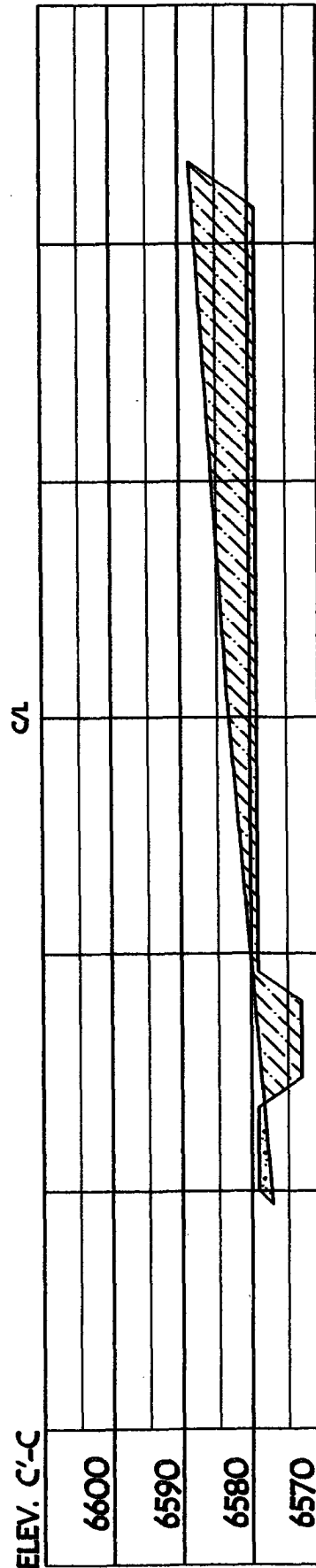
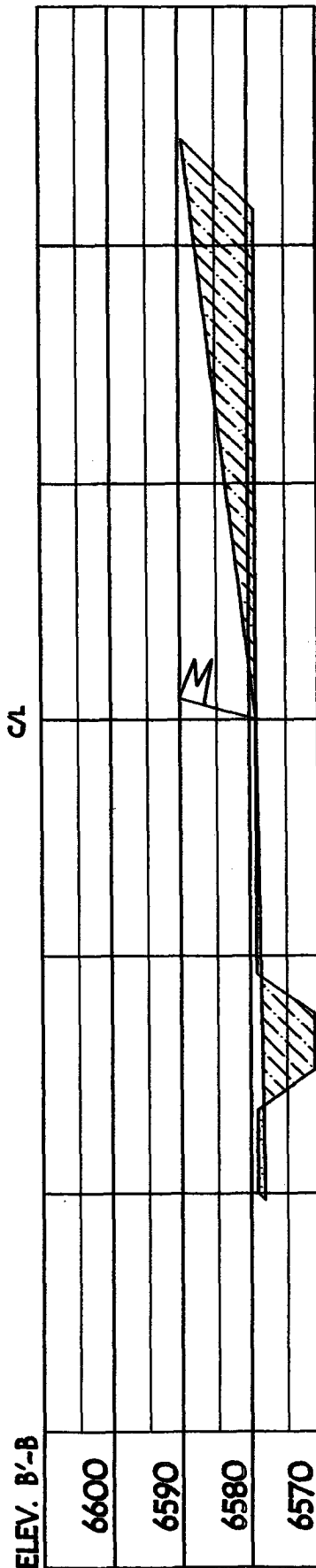


LATITUDE: 36° 37.6429' N LONGITUDE: 107° 27.9817' W NAD27

RESERVE PIT DIKE. TO BE 8' ABOVE DEEP SIDE (OVERFLOW - 3' WIDE AND 1' ABOVE SHALLOW SIDE).

NOTE: VECTOR SURVEYS IS NOT LIABLE FOR UNDERGROUND UTILITIES OR PIPELINES.
CONTRACTOR SHOULD CALL ONE-CALL FOR LOCATION OF ANY MARKED OR UNMARKED BURIED
PIPELINES OR CABLES ON WELL PAD AND OR ACCESS ROAD AT LEAST TWO (2) WORKING DAYS PRIOR TO CONSTRUCTION.

ELEV. A'-A	C/L			
6600				
6590				
6580				
6570				



NOTE: VECTOR SURVEYS IS NOT LIABLE FOR UNDERGROUND UTILITIES OR PIPELINES. CONTRACTOR SHOULD CALL ONE-CALL FOR LOCATION OF ANY MARKED OR UNMARKED BURIED PIPELINES OR CABLES ON WELL PAD AND OR ACCESS ROAD AT LEAST TWO (2) WORKING DAYS PRIOR TO CONSTRUCTION.

OPERATIONS PLAN

Well Name: San Juan 28-6 Unit #437S
Location: Unit P (SESE) 855' FSL & 1025' FEL, Section 28, T28N, R6W
 Rio Arriba County, New Mexico
 Latitude 36° 37.6429'N; Longitude 107° 27.9817'W
Formation: Basin Fruitland Coal
Elevation: 3564' GR

Formation:	Top	Bottom	Contents
Surface	San Jose		
Ojo Alamo	2628'		
Kirtland	2724'	3171'	gas
T/Fruitland	3171'		gas
B/Fruitland	3360'		gas
Pictured Cliffs	3364'		
Total Depth	3564'		

Note: The Total Depth for this well is into the Pictured Cliffs interval, but currently only have plans to complete the Fruitland Coal interval. We could in the near future perforate/stimulate the Pictured Cliffs interval, but only would once Regulatory approval was asked for and received.

Logging Program: None

Mud Program:

<u>Interval</u>	<u>Type</u>	<u>Weight</u>	<u>Vis. Fluid Loss</u>
0 - 120'	Spud/Air/Air Mist	8.4-8.9	40-50 no control
120-3564'	Non-dispersed	8.4-9.5	30-60 no control

Casing Program:

<u>Hole Size</u>	<u>Depth Interval</u>	<u>Csg.Size</u>	<u>Wt.</u>	<u>Grade</u>
8 $\frac{3}{4}$ "	0 - 120'	7"	20.0#	J-55
6 $\frac{1}{4}$ "	0 - 3564'	4 1/2"	10.5#	J/K-55

Tubing Program:

0 - 3564'	2 3/8"	4.7#	J-55
-----------	--------	------	------

Float Equipment: 7" surface casing - guide shoe. Centralizers will be run in accordance with Onshore Order #2.

4 1/2" production casing - float shoe and float collar on bottom. Centralizers run every third joint above shoe to the base of the Ojo Alamo @ 2724'. Two turbolizing type centralizers - one below and one into the base of the Ojo Alamo @ 2724'. Standard centralizers thereafter every fourth joint up to the base of the surface pipe.

Wellhead Equipment: 7" x 4 1/2" x 2 3/8" x 11" 2000 psi xmas tree assembly.

San Juan 28-6 Unit #4375

Cementing:

7" surface casing Pre-Set Drilled - Cement with Type I, II cement with 20% flyash mixed at 14.5 ppg, 1.61 cu ft per sack yield. (Bring cement to surface). Wait on cement for 24 hours for pre-set holes before pressure testing or drilling out from under surface.

7" surface casing - Cement with 34sx Type III cement with 0.25 pps Celloflake, 3% CaCl.
43 (54 cu ft of slurry @ 1.61 yield). 200% excess, bring cement to surface. Wait on cement for 8 hrs for conventionally set holes before pressure testing or drilling out from under surface.
WOC until cement establishes 250 psi compressive strength prior to NU of BOPE.

4 1/2" production casing - Cement with 199sx (424 cu ft of slurry @ 2.13 yield) Premium Lite with 3% calcium chloride, 5 pps LCM-1, and 1/4#/sack celloflake, 0.4% FL-52, & 0.4% SMS. Tail with 90sx (124 cu ft of slurry @ 1.38 yield) Type III cmt with 1% calcium chloride, 1/4#/sack Celloflake and 0.2% FL-52. Total of 548 cf - 50% excess to circulate to surface.

BOP and tests:

Surface to TD - 11" 2000 psi (minimum double gate BOP stack (Reference Figure #1 and #2). Prior to drilling out surface casing, test ~~rams~~ ^{BOP} to 600 psi/30 min.

Completion - 6" 2000 psi (minimum) double gate BOP stack (Reference Figure #2). Prior to completion operations, test ~~rams~~ ^{BOP} and casing to 1500 psi/30 min.

From surface to TD - choke manifold (Reference Figure #3).

Pipe rams will be actuated at least once each day and blind rams actuated once each trip to test proper functioning. An upper kelly cock valve with handle and drill string safety valves to fit each drill string will be maintained and available on the rig floor.

Additional information:

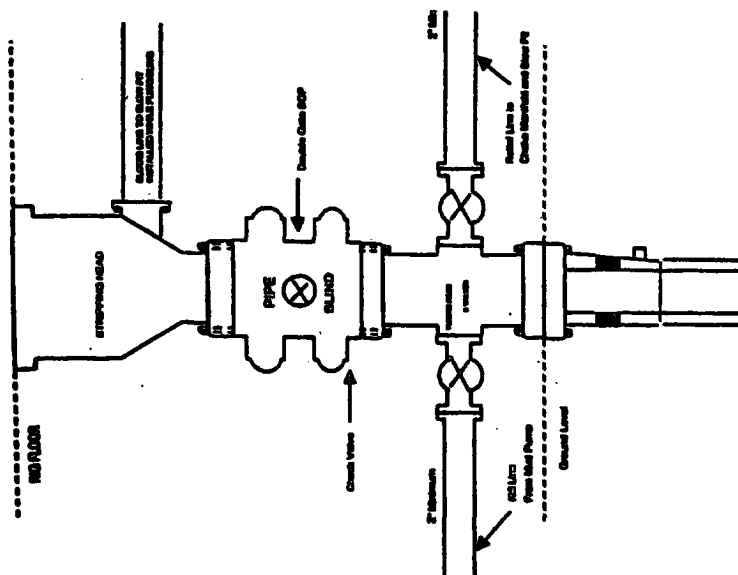
- * The Fruitland Coal formation will be completed.
- * Anticipated pore pressure for the Fruitland is between 600 - 700 psi.
- * This gas is dedicated.
- * The east half of section 28 is dedicated to Fruitland Coal for this well.
- * New casing will be utilized.
- * Pipe movement (either rotation or reciprocation) will be done if hole conditions permit.


Drilling Engineer

6/13/05
Date

BURLINGTON RESOURCES

**Completion/Workover Rig
BOP Configuration
2,000 psi System**

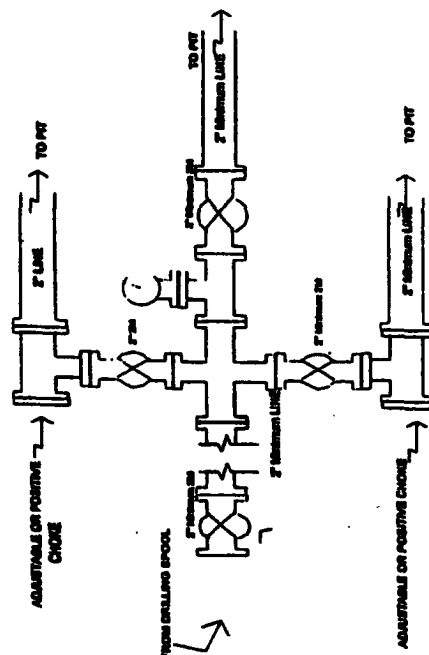


Minimum SGP installation for all Completion/Workover Operations. 7-1/8" bore, 2000 psi minimum working pressure double gate SGP to be equipped with blind and pipe rams. A stripping head to be installed on the top of the BOP. All BOP equipment is 2000 psi working pressure or greater excluding 500 psi stripping head.

Figure #2

BURLINGTON RESOURCES

**Drilling Rig
Choke Manifold Configuration
2000 psi System**

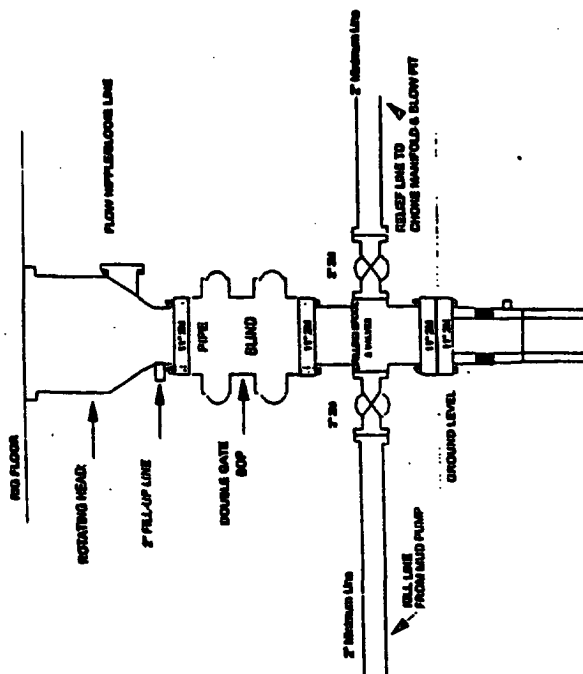


Choice manifold installation from Surface Casing Point to Total Depth. 2,000psi working pressure equipment with two chokes.

Figure #3

Burlington Resources

Drilling Rig 2000 psi System



BCP Installation from Surface Casing Point to Total Depth, 11" Bore
10" Northerd, 2000 psi working pressure double gate BCP to be equipped with blind rams and pipe rams. A BCP rod routing head on top of ram preventers. At BCP equipment is 2,000 psi working pressure ram preventers. At BCP equipment is 2,000 psi working pressure ram preventers.

Figure S1