

Submit 1 Copy To Appropriate District  
Office  
District I - (575) 393-6161  
1625 N. French Dr., Hobbs, NM 88240  
District II - (575) 748-1283  
811 S. First St., Artesia, NM 88210  
District III - (505) 334-6178  
1000 Rio Brazos Rd., Aztec, NM 87410  
District IV - (505) 476-3460  
1220 S. St. Francis Dr., Santa Fe, NM  
87505

State of New Mexico  
Energy, Minerals and Natural Resources

Form C-103  
Revised August 1, 2011

OIL CONSERVATION DIVISION  
1220 South St. Francis Dr.  
Santa Fe, NM 87505

<b>SUNDRY NOTICES AND REPORTS ON WELLS</b> (DO NOT USE THIS FORM FOR PROPOSALS TO DRILL OR TO DEEPEN OR PLUG BACK TO A DIFFERENT RESERVOIR. USE "APPLICATION FOR PERMIT" (FORM C-101) FOR SUCH PROPOSALS.)		WELL API NO. 30-045-30567
1. Type of Well: Oil Well <input type="checkbox"/> Gas Well <input type="checkbox"/> Other <input type="checkbox"/>		5. Indicate Type of Lease STATE <input type="checkbox"/> FEE <input checked="" type="checkbox"/>
2. Name of Operator Four Star Gas & Oil Company		6. State Oil & Gas Lease No.
3. Address of Operator ATTN: Regulatory Specialist 332 Road 3100 Aztec, New Mexico 87410		7. Lease Name or Unit Agreement Name LM Barton
4. Well Location Unit Letter <u>  N  </u> : 660 feet from the <u>  S  </u> line and <u>  1935  </u> feet from the <u>  W  </u> line Section <u>  12  </u> Township <u>  30N  </u> Range <u>  12W  </u> NMPM County <u>  San Juan  </u>		8. Well Number 1C
11. Elevation (Show whether DR, RKB, RT, GR, etc.) 5616" GL		9. OGRID Number 131994
		10. Pool name or Wildcat Blanco Mesaverde

12. Check Appropriate Box to Indicate Nature of Notice, Report or Other Data

NOTICE OF INTENTION TO:

PERFORM REMEDIAL WORK ☐ PLUG AND ABANDON ☐  
TEMPORARILY ABANDON ☐ CHANGE PLANS ☐  
PULL OR ALTER CASING ☐ MULTIPLE COMPL ☐  
DOWNHOLE COMMINGLE ☐

SUBSEQUENT REPORT OF:

REMEDIAL WORK ☐ ALTERING CASING ☐  
COMMENCE DRILLING OPNS. ☐ P AND A ☐  
CASING/CEMENT JOB ☐

OTHER: ☐

OTHER: 2008 perforate and frac ☒

13. Describe proposed or completed operations. (Clearly state all pertinent details, and give pertinent dates, including estimated date of starting any proposed work). SEE RULE 19.15.7.14 NMAC. For Multiple Completions: Attach wellbore diagram of proposed completion or recompletion.

11/5/2008  
MIRU

RCVD FEB 27 '13  
OIL CONS. DIV.  
DIST. 3

11/6/2008  
FINISH RIGGING UP EQUIP. WELL PRESS 290# , BLEED DOWN TO FLOWBACK TANK  
N/D TREE AND LINES. N/U BOP'S. TEST BOP'S TO 250 AND 2500#  
DROP STANDING VALVE, LET FALL, PRESS TEST TBG TO 1200#, GIH W/ SWAB LINE RETRIEVE STANDING VALVE  
P/U REMOVE HANGER AND LAY DOWN SAME. POOH STANDING TBG IN DERRICK SLM SAME  
M/U BIT SCRAPER/ BIT SUB, TIH W/ TBG TO 4335', SWFN

# Did not comply with 19.15.7.14.G

Spud Date:

10/27/2001

Rig Release Date:

File New C-104 & complete report to include new parts  
I hereby certify that the information above is true and complete to the best of my knowledge and belief.

SIGNATURE

April E Pohl

TITLE Regulatory Specialist

DATE 2-26-13

Type or print name April E. Pohl E-mail address: April.Pohl@chevron.com PHONE: 505-333-1941

For State Use Only

Deputy Oil & Gas Inspector,  
District #3

APPROVED BY: [Signature]  
Conditions of Approval (if any):

TITLE

DATE 2-27-13

Ar

11/8/2008

GIH W/ PKR PICKING UP WORKSTRING FROM 1046' TO 4000'  
HIGH TECH TO TEST CSG TO 3000#  
RIG UP HI-TECH, PRESS UP DOWN TBG TEST 4 1/2" CSG TO 3000# FROM 1059' TO 4210 TOP OF CBP FOR 30 MIN  
POOH W/ PKR. GIH OPEN ENDED W/ TBG

11/10/2008

POOH AND LAY DOWN WORKSTRING. LOAD ON FLOAT  
RIG UP SCHLUMBERGER, M/U 3 1/8 HEGS GUN 90 DEGREE PH 2SPF RUN # 1 GIH AND PERF 4084-88 AND 4018-23,  
RUN # 2 PERF 3952-58 AND 3921-26 ,POOH RIG DOWN SCHLUMBERGER. SWFN

11/11/2008

M/U TENSION PKR GIH W/ 33 JTS WS TO 1059'. RIG UP FRAC MANDREL  
SET TENSION PKR IN 4000# TENSION, TBG COLLAR IN PIPE RAMS, MOVE PIPE AND BLIND RAMS  
TEST CSG AND PKR DOWN TBG -CSG ANNULUS TO 450# SECURE WELL

11/14/2008

LOAD WELL, BREAK DOWN PERFS PUMPING 3.3 BPM AT 2156# PUMP 1000 GALS ACID W/ 60 BIO-BALLS,PUMP ACID AT 7 BPM  
AVG PRESS 2100# BALL OUT PRESS 2400 PSI SHUT DOWN , ISIP .79  
PUMP JOB MAX RATE WAS 23 BPM INSTEAD OF 35 BPM MAX RATE 23.9 BPM AVG RATE 18.5 BPM MAX PRESS 3231 PSI AVG  
PRESS 2670 PSI, PUMPED 72,022 GALS OF 9 CP DELTA 140 FRAC FLUID , PUMPED 1100 SACKS OF 20/40 OTTAWA SAND, TOT  
FLUID TO REC 1744 BBLS, A 33% PAD WAS PUMPED, FINAL FRAC GRADIENT .80  
OPEN WELL TO FLOW BACK TANK ON 16/64 CHOKE PRESS 775#, FLOW WELL W/ KELCO ON LOC

11/17/2008

Well flowing on 16/64" choke at 0730 with 220#; Made 15 BWHr w/ gas; Recovered 675 BW since open well; removed  
16/64" choke; Note: CIT bgPSI went to 300# in 10 minutes that well closed in & sand in choke body ; Open well on 1" choke ;  
well heading from 40# to 100# making large heads of water ; From 0800 to 1200 well flowing aver of +- 35 BWHr; still trace of  
sand; From 1100 to 1400 down to Aver of + 25 BWHr w/ FTbgPSI from 50 to 60# sweeps; Well aver 15 BWHr from 1430 to  
1630; FT bgPSI = 20# to 40#

11/18/2008

CITbgPsi = 980# ; Open on 22/64" choke ; PSI bleed to 880# ; Choke plug w/ ice ; CWI ; Bleed off ; Removed plug choke ; bleed  
well done to 700# in + 30 minutes on pinched valve ; Installed 24/64" choke & bleed well down to 220# in 1 hr [ Est. +- 12  
BWHr ] Removed 24/64" choke & open on 1" : At 1300 well making +- 15 BWHr w/ 20# to 40#

PSI'd up to 200# on kelly hose ; Closed well from flowing to FBT ; Open TIW valve ; Pumped 50 B/ 2% KCL ; Caught PSI ; PSI up  
to 800# ; Shut down ; PSI drop to 350# ; Open to FBT w/ dead  
ND Frac Mandral and released Packer. Pooh w/ 2.375" work string and packer ; Laid down & released  
PU 3.75" bit & bit sub w/ float on 2.375" work string ; Btm of bit at 2230' KBC PM ; Well started making small heads w/ Gas  
on annulus after dead +- 2 hrs  
Ran line from casing valve to flow back manifold to bleed down high PSI thru choke in neccessary

11/19/2008

Established foam air circulation; Took 1000# to lift fluid; Checked returns after btm up; 3 gal of sand; increased water from 8 to  
10 bbls hr to 12 to 15 bbls water Hr; Pumped sweep; [pump PSI stablized at 600# ] Sand cleaned up; Note: Btm of bit = 2230' :

Trip in hole to 3173' KBC PM ;  
Established foam air circulation at 12 to 15 BWHr at 500# ; Pumped sweep > cup of sand ;  
TIH & Tag at 4088' ; Btm of Perf ; Laid down tag jt. PU power swivel w/ Tag jt  
Established foam air circulation at 12 to 15 BWHr ;  
Cleaned out from 4088' - 4210' KBC PM ; Pump sweeps every 45 min. Rack back power swivel - laid down tag jt  
TOH to 3802' KBC PM to btm of bit. Free flowed well to FBT on two 3" flowback lines  
1st hr well flowed + 12 BWHr ; 2nd check equals 9 BWHr; Unable to continue to flow well - gas settling

11/20/2008

Open well on 28/64" ; Bleed from 1100# to 840# ; Choke plug w/ ice ; open on 3" crack valve while changed choke ; Removed 28/64" ; open on 2" pinched valve flowed well down to 300# ; Open on 1" choke body ; Flowed down to 100# ; Open on 2 3" FB lines ;

TIH & tag at 4153' KBC PM ; Equals 57' of fill ;

Free flowed well -to clean out or TOH Since well start water after opening made 20 Bw in 1.5 hours ;

RU power swivel w/ tag jt ; Note: tag at 4148' KBC PM [ 5' of fill in 1 hr of free flow ]

Established foam air circulation at 12 to 15 BWHR ; Pump PSI = 900# then fell back to 600# ; Caught 1 gal of sand in 4 gal sample on 1st sample ;

Cleaned out from 4148' to 4210' KBC PM ; pump sweeps every 45 minutes ; 2nd sample = 1 gal sand in 4 G; 3rd sample 1/2 gal sand /4 G; 4th = 1 G sand/ 4 G; 5th sample = 1/2 G; 6th = 2 Cup sand; Last sample > cup of sand

Rig down power swivel; TOH laying down workstring ; CWI w/ btm of bit 3173' KBC PM

11/21/2008

CIAnnPSI = 1040# ; Open to FBT on 32/64" choke ; Well flowed down to 300# ; Open on 2 = 3" Flow back lines ;

POOH; Laid down 100 jts of 2.375" work string & bit sub & bit; Loaded out work string 2.375"

Tallied 243 jts of 2.375" Production tubing

WIH w/ Baker wireline reentry w/ pump out plug pinned for 1600# on 2.375" - 4' pup jt , Baker F nipple on 131 jts of 2.375" P. tubing ; Landed hanger ; Note: 3 of 4 lock down pins vey stiff hard to run in ; EOT = 4014' KBC PM ' ; Baker F nipple at 4008 KBC PM '

ND BOP stack into individual components; NU wellhead; B-1 adapter bored for seal sleeve [ seal sub ]

Tested void to 2000# ; Good ; Installed new 2.375" screwed master valve

RU Kelly hose ; Pumped 16 B/ 2% KCL ; Loaded tubing ; Pumped plug off w/ 200# ; CWI

11/22/2008

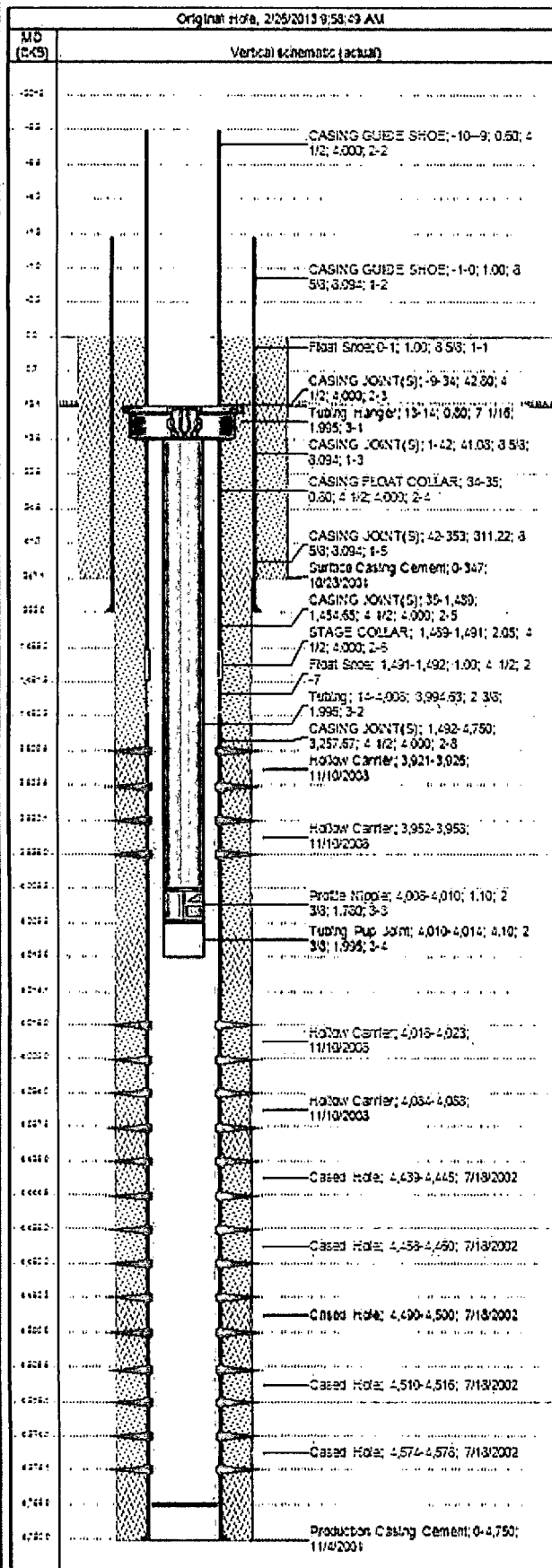
CITbgPsi = 980# / CIAnnPSI = 980# ; Open Tbg to FBT on 32/64" choke ' Flowed well + 10 minutes ; FTbgPsi stablized at 780#

RD test line; NU flowline. RDMO.



# Wellbore Schematic

Well Name LM Barton 1C	Lessee Four Star L.M. Barton	Field Name Blanco Mesa Verde	Business Unit Mid-Continent/Alaska
---------------------------	---------------------------------	---------------------------------	---------------------------------------



Job Details							
Job Category			Start Date		Release Date		
Major Rig Work Over (MRWO)			10/31/2008		11/22/2008		
Casing Strings							
Csg Des	OD (in)	Wt (lb/ft)	Grade	Top Thread	Set Depth (MD) (ft)		
Surface	8 5/8	24.00	K-55		353		
Production Casing	4 1/2	11.60	J-55		4,750		
Tubing Strings							
Tubing - Production set at <depthbtm>ftKB on <dtlrun>							
Tubing Description		Run Date		String Length (ft)		Set Depth (MD) (ft)	
Tubing - Production		11/21/2008		4,001.08		4,014.1	
Item Des	Its	OD (in)	Wt (lb/ft)	Grade	Len (ft)	Sum (ft)	
Tubing Hanger	1	7 1/16			0.80	13.8	
Tubing	131	2 3/8	4.70	J-55	3,994.63	4,008.4	
Profile Nipple	1	2 3/8			1.10	4,009.5	
Tubing Pup Joint	1	2 3/8	4.70	J-55	4.10	4,013.6	
Wireline Guide	1				0.45	4,014.1	
Perforations							
Date	Top (ft)	Sim (ft)	Shot Cons (lb/ft)	Entered Shot Total	Zone & Completion		
11/10/2008	3,921.0	3,926.0	2.0				
11/10/2008	3,952.0	3,958.0	2.0				
11/10/2008	4,018.0	4,023.0	2.0				
11/10/2008	4,084.0	4,088.0	2.0				
7/18/2002	4,439.0	4,445.0			Point Lookout, Original Hole		
7/18/2002	4,458.0	4,460.0			Point Lookout, Original Hole		
7/18/2002	4,490.0	4,500.0			Point Lookout, Original Hole		
7/18/2002	4,510.0	4,516.0			Point Lookout, Original Hole		
7/18/2002	4,574.0	4,578.0			Point Lookout, Original Hole		
Other Strings							
Run Date	Put Date	Set Depth (ft)	Com				