

District I
1625 N. French Dr., Hobbs, NM 88240
Phone: (575) 393-6161 Fax: (575) 393-0720
District II
811 S. First St., Artesia, NM 88210
Phone: (575) 748-1283 Fax: (575) 748-9720
District III
1000 Rio Brazos Road, Aztec, NM 87410
Phone: (505) 334-6178 Fax: (505) 334-6170
District IV
1220 S. St. Francis Dr., Santa Fe, NM 87505
Phone: (505) 476-3460 Fax: (505) 476-3462

State of New Mexico

Form C-101
Revised November 14, 2012

Energy Minerals and Natural Resources

Oil Conservation Division

☐ AMENDED REPORT

1220 South St. Francis Dr.

Santa Fe, NM 87505

RCVD MAR 27 '13
OIL CONS. DIV.
DIST. 3

APPLICATION FOR PERMIT TO DRILL, RE-ENTER, DEEPEN, PLUGBACK, OR ADD A ZONE

¹ Operator Name and Address Thompson Engineering and Production Corp. 7415 E. Main St., Farmington, NM 87402		² OGRID Number 37581
		³ API Number 30-045-35468
⁴ Property Code 39787	⁵ Property Name PGA Unit 2	⁶ Well No. 2#4

⁷ Surface Location

UL - Lot	Section	Township	Range	Lot Idn	Feet from	N/S Line	Feet From	E/W Line	County
1	2	23N	11W		1960	South	660	East	San Juan

⁸ Proposed Bottom Hole Location

UL - Lot	Section	Township	Range	Lot Idn	Feet from	N/S Line	Feet From	E/W Line	County
1	2	23N	11W		1960	South	660	East	San Juan

⁹ Pool Information

Pool Name Basin Fruitland Coal	Pool Code 71629
-----------------------------------	--------------------

Additional Well Information

¹¹ Work Type N	¹² Well Type G	¹³ Cable/Rotary Rotary	¹⁴ Lease Type State	¹⁵ Ground Level Elevation 6609'
¹⁶ Multiple N	¹⁷ Proposed Depth 1110'	¹⁸ Formation Pictured Cliffs	¹⁹ Contractor	²⁰ Spud Date August 1, 2013
Depth to Ground water > 100'		Distance from nearest fresh water well > 500'		Distance to nearest surface water > 1 mile

²¹ Proposed Casing and Cement Program

Type	Hole Size	Casing Size	Casing Weight/ft	Setting Depth	Sacks of Cement	Estimated TOC
Surface	12-1/4"	8-5/8"	24#	120' +/-	85	Surface
Productio	7-7/8"	5-1/2"	15.5#	1110' +/-	120 + 75	Surface

Casing/Cement Program: Additional Comments

--

²² Proposed Blowout Prevention Program

Type	Working Pressure	Test Pressure	Manufacturer
Double Ram	2,000	250 psi & 1,000 psi	Townsend

²³ I hereby certify that the information given above is true and complete to the best of my knowledge and belief. I further certify that I have complied with 19.15.14.9 (A) NMAC <input type="checkbox"/> and/or 19.15.14.9 (B) NMAC <input type="checkbox"/> , if applicable. Signature: <i>Paul C. Thompson</i>		OIL CONSERVATION DIVISION	
Printed Name: Paul C. Thompson		Approved By: <i>Charles R. [Signature]</i> 4-4-2013	
Title: Paul C. Thompson, P.E.		Title: SUPERVISOR DISTRICT #3	
E-mail Address: paul@walsheng.net		Approved Date: APR 04 2013 Expiration Date: APR 04 2015	
Date: 3/13/13	Phone: (505) 327-4892	Conditions of Approval Attached	

NOTIFY AZTEC OCD 24 HRS.
PRIOR TO CASING & CEMENT

APR 04 2013 ca

District I
1625 N. French Drive, Hobbs, NM 88240
Phone: (575) 393-6161 Fax: (575) 393-0720

District II
811 S. First Street, Artesia, NM 88210
Phone: (575) 748-1283 Fax: (575) 748-9720

District III
1000 Rio Brazos Road, Aztec, NM 87410
Phone: (505) 334-6178 Fax: (505) 334-6170

District IV
1220 S. St. Francis Drive, Santa Fe, NM 87505
Phone: (505) 476-3460 Fax: (505) 476-3462

State of New Mexico
Energy, Minerals & Natural Resources Department

Form C-102
Revised August 1, 2011

Submit one copy to
Appropriate District Office

OIL CONSERVATION DIVISION

1220 South St. Francis Drive
Santa Fe, NM 87505

☐ AMENDED REPORT

WELL LOCATION AND ACREAGE DEDICATION PLAT

¹ API Number 30-045-35468	² Pool Code 71629	³ Pool Name BASIN FRUITLAND COAL
⁴ Property Code 39787	⁵ Property Name PGA UNIT 2	⁶ Well Number 4
⁷ GRID No. 37581	⁸ Operator Name THOMPSON ENGINEERING & PRODUCTION CORPORATION	⁹ Elevation 6609'

¹⁰ Surface Location

UL or lot no.	Section	Township	Range	Lot Idn	Feet from the	North/South line	Feet from the	East/West line	County
I	2	23N	11W		1960	SOUTH	660	EAST	SAN JUAN

¹¹ Bottom Hole Location If Different From Surface

UL or lot no.	Section	Township	Range	Lot Idn	Feet from the	North/South line	Feet from the	East/West line	County
¹² Dedicated Acres 320.0 Acres - (S/2)					¹³ Joint or Infill	¹⁴ Consolidation Code	¹⁵ Order No.		

NO ALLOWABLE WILL BE ASSIGNED TO THIS COMPLETION UNTIL ALL INTERESTS HAVE BEEN CONSOLIDATED.
OR A NON-STANDARD UNIT HAS BEEN APPROVED BY THE DIVISION

¹⁶ N89°28'W 2622.84' (RECORD) N89°28'W 2622.84' (RECORD)
N89°23'03"W 2623.51' (MEASURED) N89°21'44"W 2621.15' (MEASURED)

N03°58'E 2721.84' (RECORD) N04°02'29"E 2719.70' (MEASURED)	LOT 4	LOT 3	LOT 2	LOT 1	N02°42'E 2639.34' (RECORD) N02°43'18"E 2634.48' (MEASURED)
	<p>LAT: 36.25361°N LONG: 107.96575°W DATUM: NAD1927</p> <p>LAT: 36.25362°N LONG: 107.96637°W DATUM: NAD1983</p> <p>660'</p> <p>1960'</p> <p>VA 2965</p> <p>VD 8067</p>				
N03°58'E 2737.02' (RECORD) N04°05'36"E 2737.52' (MEASURED)					

¹⁷ OPERATOR CERTIFICATION

I hereby certify that the information contained herein is true and complete to the best of my knowledge and belief, and that this organization either owns a working interest or unleased mineral interest in the land including the proposed bottom-hole location or has a right to drill this well at this location pursuant to a contract with an owner of such a mineral or working interest, or to a voluntary pooling agreement or a compulsory pooling order heretofore entered by the division.

Paul C. Thompson 3/19/13
Signature Date
PAUL C. THOMPSON
Printed Name
PAUL@WALSHENG.NET
E-mail Address

¹⁸ SURVEYOR CERTIFICATION

I hereby certify that the well location shown on this plat was plotted from field notes of actual surveys made by me or under my supervision, and that the same is true and correct to the best of my belief.

Survey Date: NOVEMBER 29, 2012

Signature and Seal of Professional Surveyor

JASON C. EDWARDS
NEW MEXICO
REGISTERED PROFESSIONAL SURVEYOR
15269

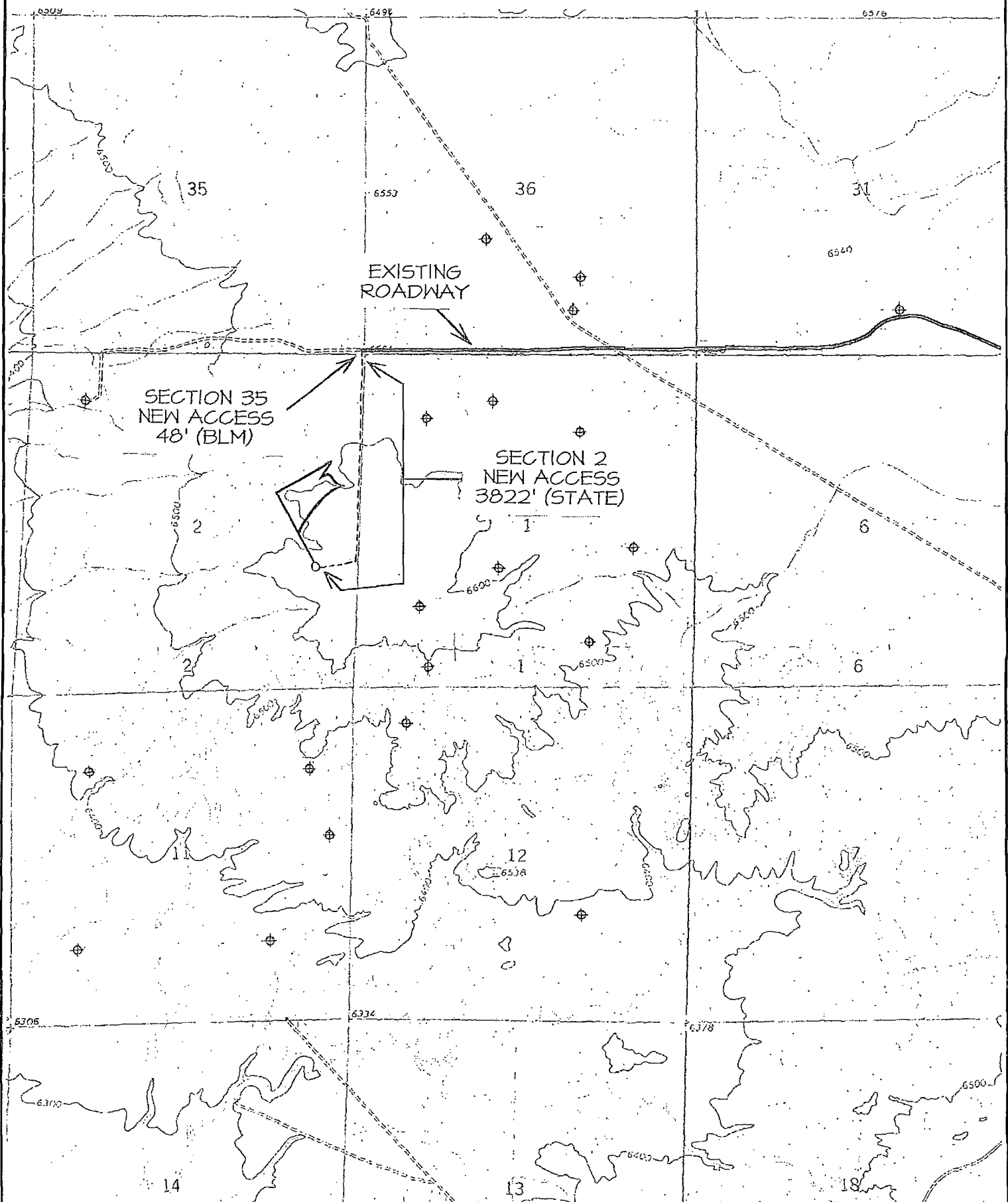
JASON C. EDWARDS
Certificate Number 15269

S88°40'34"W 2685.66' (MEASURED)
S88°34'W 2690.49' (RECORD)

S88°38'13"W 2693.37' (MEASURED)
S88°34'W 2690.49' (RECORD)

THOMPSON ENGINEERING & PRODUCTION CORPORATION PAGE 2#4

1960' FSL & 660' FEL, SECTION 2, T23N, R11W, N.M.P.M.
SAN JUAN COUNTY, NEW MEXICO



NAME OF TOPOS : PUEBLO BONITO, NW
HUERFANO TRADING POST, SW

⊕ PRODUCING WELL ⊗ PLUGGED & ABANDONED WELL