

UNITED STATES  
DEPARTMENT OF THE INTERIOR  
BUREAU OF LAND MANAGEMENT

RECEIVED

FEB 14 2013

FORM APPROVED  
OMB No. 1004-0137  
Expires: July 31, 2010

Farmington Field Office

NMNM-012293

**SUNDRY NOTICES AND REPORTS ON WELLS of Land**  
**Do not use this form for proposals to drill or to re-enter an**  
**abandoned well. Use Form 3160-3 (APD) for such proposals.**

SUBMIT IN TRIPLICATE - Other instructions on page 2.

1. Type of Well

☐

Oil Well

☒

Gas Well

☐

Other

2. Name of Operator

Burlington Resources Oil & Gas Company LP

3a. Address

PO Box 4289, Farmington, NM 87499

3b. Phone No. (include area code)

(505) 326-9700

4. Location of Well (Footage, Sec., T., R., M., or Survey Description)

Surface

Unit I (NESE), 1550' FSL & 1115' FEL, Sec. 13, T30N, R7W

5. Lease Serial No.

Field Office

Indian, Allottee or Tribe Name

7. If Unit of CA/Agreement, Name and/or No.

San Juan 30-6 Unit

8. Well Name and No.

San Juan 30-6 Unit 463S

9. API Well No.

30-039-27740

10. Field and Pool or Exploratory Area

Basin Fruitland Coal

11. Country or Parish, State

Rio Arriba

New Mexico

12. CHECK THE APPROPRIATE BOX(ES) TO INDICATE NATURE OF NOTICE, REPORT OR OTHER DATA

TYPE OF SUBMISSION

☒ Notice of Intent

☐ Subsequent Report

☐ Final Abandonment Notice

TYPE OF ACTION

☐ Acidize

☐ Alter Casing

☐ Casing Repair

☐ Change Plans

☐ Convert to Injection

☐ Deepen

☐ Fracture Treat

☐ New Construction

☒ Plug and Abandon

☐ Plug Back

☐ Production (Start/Resume)

☐ Reclamation

☐ Recomplete

☐ Temporarily Abandon

☐ Water Disposal

☐ Water Shut-Off

☐ Well Integrity

☐ Other

13. Describe Proposed or Completed Operation: Clearly state all pertinent details, including estimated starting date of any proposed work and approximate duration thereof.

If the proposal is to deepen directionally or recompleat horizontally, give subsurface locations and measured and true vertical depths of all pertinent markers and zones. Attach the bond under which the work will be performed or provide the Bond No. on file with BLM/BIA. Required subsequent reports must be filed within 30 days following completion of the involved operations. If the operation results in a multiple completion or recompleat in a new interval, a Form 3160-4 must be filed once Testing has been completed. Final Abandonment Notices must be filed only after all requirements, including reclamation, have been completed and the operator has determined that the site is ready for final inspection.)

**Burlington Resources requests permission to P&A the subject well per the attached procedure, current and proposed wellbore schematics.**

RCVD APR 23 '13  
OIL CONS. DIV.  
DIST. 3

Notify NMOC D 24 hrs  
prior to beginning  
operations

14. I hereby certify that the foregoing is true and correct. Name (Printed/Typed)

Dollie L. Busse

Title Staff Regulatory Technician

Signature

Date

2/14/13

THIS SPACE FOR FEDERAL OR STATE OFFICE USE

Approved by

Original Signed: Stephen Mason

Title

Date

APR 22 2013

Conditions of approval, if any, are attached. Approval of this notice does not warrant or certify that the applicant holds legal or equitable title to those rights in the subject lease which would entitle the applicant to conduct operations thereon.

Office

Title 18 U.S.C. Section 1001 and Title 43 U.S.C. Section 1212, make it a crime for any person knowingly and willfully to make to any department or agency of the United States any false, fictitious or fraudulent statements or representations as to any matter within its jurisdiction.

(Instruction on page 2)

NMOC D

**ConocoPhillips**  
**SAN JUAN 30-6 UNIT 463S**  
**Expense - P&A**

Lat 36° 48' 34.607" N

Long 107° 30' 59.339" W

**PROCEDURE**

**This project requires a NMOCD C-144 CLEZ Closed-Loop System Permit for the use of an A-Plus steel tank to handle waste fluids circulated from the well and cement wash up.**

1. Hold pre-job safety meeting. Comply with all NMOCD, BLM, and COPC safety and environmental regulations. Test rig anchors prior to moving in rig.
2. MIRU work over rig. Check casing, tubing, and bradenhead pressures and record them in Wellview.
3. When an existing primary valve (i.e. casing valve) is to be used, the existing piping should be removed and replaced with the appropriate piping for the intended operation.
4. RU blow lines from casing valves and begin blowing down casing pressure. Unseat pump and kill well with water, as necessary, and at least pump tubing capacity of water down tubing.
5. TOOH w/ 3/4" rods and LD.
6. ND wellhead and NU BOPE. Pressure and function test BOP. PU and remove tubing hanger.
7. TOOH with 2-3/8" tubing (per pertinent data sheet).

<b>Rods:</b>	Yes	<b>Size:</b>	3/4"	<b>Length:</b>	3,167'
<b>Tubing:</b>	Yes	<b>Size:</b>	2-3/8"	<b>Length:</b>	3,174'

Round trip watermelon mill to 3,200' or as deep as possible.

**All cement volumes use 100% excess outside pipe and 50' excess inside pipe. The stabilizing wellbore fluid will be 8.3 ppg, sufficient to balance all exposed formation pressures. All cement will be ASTM Type II mixed at 15.6 ppg with a 1.18 cf/sk yield.**

**8. Plug 1 (Pictured Cliffs Formation Top, 3,100' - 3,200', 17 Sacks Class B Cement)**

TIH with tubing. Mix 17 sx Class B cement and spot a balanced plug inside the liner to isolate the Pictured Cliffs formation top. POOH.

9. PU and set CR for 7" OD, 6.456" ID casing at 2,851' on tubing. Load hole with water and circulate clean. Pressure test casing to 560 psi and tubing to 800 psi. If casing does not test, the spot or tag subsequent plugs as appropriate. TOOH with tubing.

10. RU wireline and run CBL from 2,851' to surface and contact Rig Supervisor and Production Engineer with results.

**11. Plug 2 (Open Hole, Intermediate Shoe, and Liner Top, 2751-2851', 29 Sacks Class B Cement)** *Fruitland top @ 2848'*

TIH with tubing, mix 29 sx Class B cement and spot inside the casing above CR to isolate the open hole, Intermediate shoe and liner top. PUH.

**12. Plug 3 (Fruitland Coal Top, 2305-2405', 29 Sacks Class B Cement)**

Mix 29 sx Class B cement and spot a balanced plug inside the casing to isolate the Fruitland Coal formation top. PUH.

**13. Plug 4 (Kirtland and Ojo Alamo Formation Tops, 1800-2088', 48 Sacks Class B Cement)**

Mix 48 sx Class B cement and spot a balanced plug inside the casing to isolate the Kirtland and Ojo Alamo formation tops. PUH.

**14. Plug 5 (Nacimiento Formation Top, 596-696', 29 Sacks Class B Cement)**

Mix 29 sx Class B cement and spot a balanced plug inside the casing to isolate the Nacimiento formation top. PUH.

**15. Plug 6 (Surface Casing Shoe, 0-178', 44 Sacks Class B Cement)**

Connect the pump line to the bradenhead valve and attempt to pressure test the BH annulus to 300 PSI; note the volume to load. If the BH annulus holds pressure, then establish circulation out casing valve with water. Mix 44 sxs Class B cement and spot a balanced plug inside the casing from 178' to surface, circulate good cement out casing valve. TOH and LD tubing. Shut in well and WOC. If the BH annulus does not test, then perforate at the appropriate depth and attempt to circulate cement to surface, filling the 7" casing and the BH annulus to surface. Shut in well and WOC.

16. Nipple down BOP and cut off casing below the casing flange. Install P&A marker with cement to comply with regulations. Rig down, move off location, cut off anchors, and restore location.

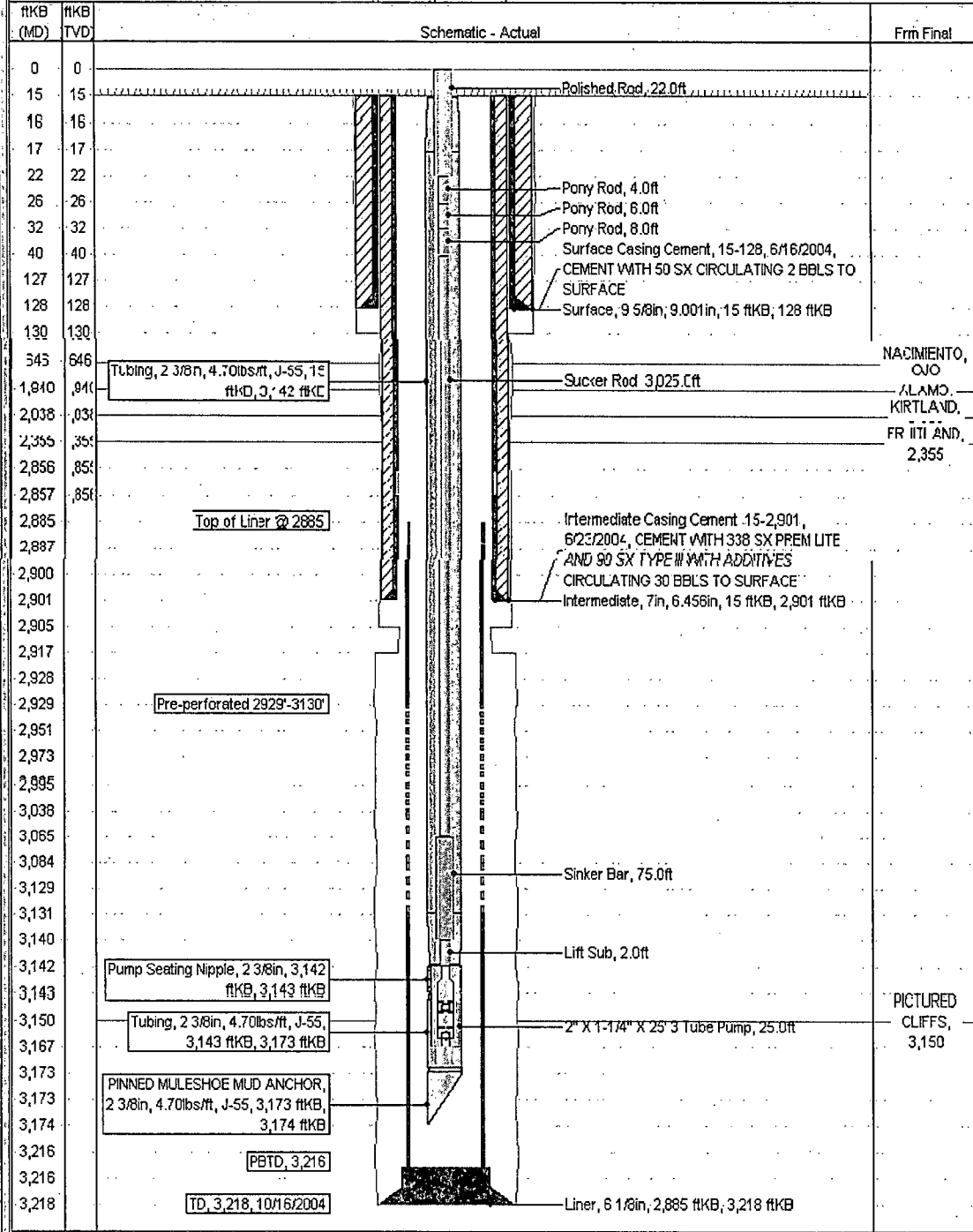
# Current Schematic

ConocoPhillips

Well Name: SAN JUAN 30-6 UNIT #463S

API/URN	Surface Legal Location	Field Name	License No.	State/Province	Well Configuration Type	Edit
3003927740	NMPM,013-030N-007W	BASIN (FRUITLAND COAD)		NEW MEXICO		
Ground Elevation (ft)	Original KB/RT Elevation (ft)	KB-Ground Distance (ft)	KB-Casing Flange Distance (ft)	KB-Tubing Hanger Distance (ft)		
6,209.00	6,224.00	15.00	6,224.00	6,224.00		

Well Config: - Original Hole, 1/15/2013 11:45:39 AM



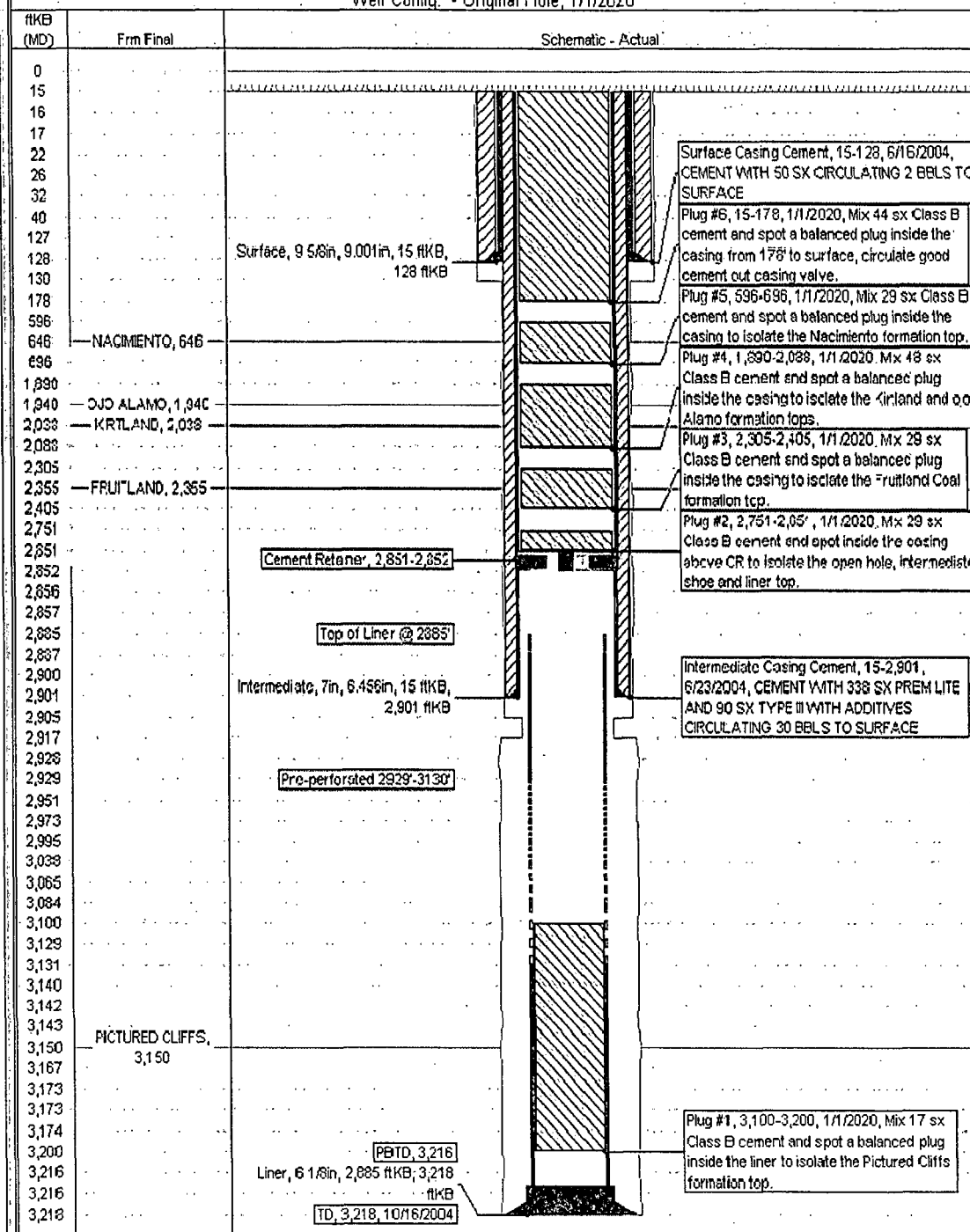
ConocoPhillips

# Proposed Schematic

Well Name: SAN JUAN 30-6 UNIT #463S

API/UNIT	Circle Legal Location	Field Name	License No.	Core Province	Well Configuration Type	Edit
3003927740	NMPM.013-030N-007W	BACHT/FRUITLAND COAL		NEW MEXICO		
Ground Elevation: ft	Original PERT Elevation: ft	15-6" Hole Depth: ft	15-6" Casing Depth: ft	15-6" Casing Depth: ft	15-6" Casing Depth: ft	
6,209.00	6,224.00	15.00	6,224.00	6,224.00	6,224.00	

Well Config: - Original Hole, 1/1/2020



UNITED STATES DEPARTMENT OF THE INTERIOR  
BUREAU OF LAND MANAGEMENT  
FARMINGTON DISTRICT OFFICE  
6251 COLLEGE BLVD.  
FARMINGTON, NEW MEXICO 87402

Attachment to notice of  
Intention to Abandon:

Re: Permanent Abandonment  
Well: 463S San Juan 30-6 Unit

CONDITIONS OF APPROVAL

1. Plugging operations authorized are subject to the attached "General Requirements for Permanent Abandonment of Wells on Federal and Indian Lease."
2. Farmington Office is to be notified at least 24 hours before the plugging operations commence (505) 564-7750.
3. The following modifications to your plugging program are to be made:
  - a) Place the Kirtland/Ojo Alamo plug from 2346' - 2060'.
  - b) Place the Nacimiento plug from 928' - 828'.

You are also required to place cement excesses per 4.2 and 4.4 of the attached General Requirements.

Office Hours: 7:45 a.m. to 4:30 p.m.