

District I  
1625 N. French Dr., Hobbs, NM 88240

District II  
1301 W. Grand Ave., Artesia, NM 88210

District III  
1000 Rio Brazos Rd., Aztec, NM 87410

District IV  
1220 S. St. Francis Dr., Santa Fe, NM 87505

State of New Mexico  
Energy Minerals and Natural Resources  
Department  
Oil Conservation Division  
1220 South St. Francis Dr.  
Santa Fe, NM 87505

Form C-144  
July 21, 2008

For temporary pits, closed-loop systems, and below-grade tanks, submit to the appropriate NMOCD District Office.

For permanent pits and exceptions submit to the Santa Fe Environmental Bureau office and provide a copy to the appropriate NMOCD District Office.

**Pit, Closed-Loop System, Below-Grade Tank, or  
Proposed Alternative Method Permit or Closure Plan Application**

- Type of action: ☐ Permit of a pit, closed-loop system, below-grade tank, or proposed alternative method  
☒ Closure of a pit, closed-loop system, below-grade tank, or proposed alternative method  
☐ Modification to an existing permit  
☐ Closure plan only submitted for an existing permitted or non-permitted pit, closed-loop system, below-grade tank, or proposed alternative method

**Instructions: Please submit one application (Form C-144) per individual pit, closed-loop system, below-grade tank or alternative request**

Please be advised that approval of this request does not relieve the operator of liability should operations result in pollution of surface water, ground water or the environment. Nor does approval relieve the operator of its responsibility to comply with any other applicable governmental authority's rules, regulations or ordinances.

1  
Operator: Burlington Resources Oil & Gas Company, LP OGRID#: 14538  
Address: P.O. Box 4289, Farmington, NM 87499  
Facility or well name: SAN JUAN 27-4 UNIT 135M  
API Number: 30-039-31039 OCD Permit Number: \_\_\_\_\_  
U/L or Qtr/Qtr: G(SW/NE) Section: 36 Township: 27N Range: 4W County: Rio Arriba  
Center of Proposed Design: Latitude: 36.531811 °N Longitude: 107.199423 °W NAD: ☐ 1927 ☒ 1983  
Surface Owner: ☒ Federal ☐ State ☐ Private ☐ Tribal Trust or Indian Allotment

2  
☒ **Pit:** Subsection F or G of 19.15.17.11 NMAC  
Temporary: ☒ Drilling ☐ Workover  
☐ Permanent ☐ Emergency ☐ Cavitation ☐ P&A  
☒ Lined ☐ Unlined Liner type: Thickness 20 mil ☒ LLDPE ☐ HDPE ☐ PVC ☐ Other \_\_\_\_\_  
☒ String-Reinforced  
Liner Seams: ☒ Welded ☒ Factory ☐ Other \_\_\_\_\_ Volume: 7700 bbl Dimensions L 120' x W 55' x D 12'

**OIL CONS. DIV. DIST. 3**

**JAN 8 1 2013**

3  
☐ **Closed-loop System:** Subsection H of 19.15.17.11 NMAC  
Type of Operation: ☐ P&A ☐ Drilling a new well ☐ Workover notice of i  
☐ Drying Pad ☐ Above Ground Steel Tanks ☐ Haul-off Bins  
☐ Lined ☐ Unlined Liner type: Thickness \_\_\_\_\_ mil  
Liner Seams: ☐ Welded ☐ Factory ☐ Other \_\_\_\_\_

**DENIED**

BY: Jonathan Kelly  
DATE: 5/21/2013 (505) 334-6178 Ext. 122

4  
☐ **Below-grade tank:** Subsection I of 19.15.17.11 NMAC  
Volume: \_\_\_\_\_ bbl Type of fluid: \_\_\_\_\_  
Tank Construction material: \_\_\_\_\_  
☐ Secondary containment with leak detection ☐ Visible sidewalls, liner, 6-inch lift and automatic overflow shut-off  
☐ Visible sidewalls and liner ☐ Visible sidewalls only ☐ Other \_\_\_\_\_  
Liner Type: Thickness \_\_\_\_\_ mil ☐ HDPE ☐ PVC ☐ Other \_\_\_\_\_

Condition #3 of Closure report is incorrect as rig release date was reported as 10/6/2011 and the rule change was 6/16/2008

5  
☐ **Alternative Method:**  
Submittal of an exception request is required. Exceptions must be submitted to the Santa Fe Environmental Bureau office for consideration of approval.

6

**Fencing:** Subsection D of 19.15.17.11 NMAC (*Applies to permanent pit, temporary pits, and below-grade tanks*)

☐

Chain link, six feet in height, two strands of barbed wire at top (*Required if located within 1000 feet of a permanent residence, school, hospital, institution or church*)

☐

Four foot height, four strands of barbed wire evenly spaced between one and four feet

☐

Alternate. Please specify \_\_\_\_\_

7

**Netting:** Subsection E of 19.15.17.11 NMAC (*Applies to permanent pits and permanent open top tanks*)

☐

Screen

☐

Netting

☐

Other

\_\_\_\_\_

☐

Monthly inspections (*If netting or screening is not physically feasible*)

8

**Signs:** Subsection C of 19.15.17.11 NMAC

☐

12" X 24", 2" lettering, providing Operator's name, site location, and emergency telephone numbers

☒

Signed in compliance with 19.15.3.103 NMAC

9

**Administrative Approvals and Exceptions:**

Justifications and/or demonstrations of equivalency are required. Please refer to 19.15.17 NMAC for guidance.

*Please check a box if one or more of the following is requested, if not leave blank:*

☐

Administrative approval(s): Requests must be submitted to the appropriate division district of the Santa Fe Environmental Bureau office for consideration of approval. (**Fencing/BGT Liner**)

☐

Exception(s): Requests must be submitted to the Santa Fe Environmental Bureau office for consideration of approval.

10

**Siting Criteria (regarding permitting) 19.15.17.10 NMAC**

*Instructions: The applicant must demonstrate compliance for each siting criteria below in the application. Recommendations of acceptable source material are provided below. Requests regarding changes to certain siting criteria may require administrative approval from the appropriate district office or may be considered an exception which must be submitted to the Santa Fe Environmental Bureau Office for consideration of approval. Applicant must attach justification for request. Please refer to 19.15.17.10 NMAC for guidance. Siting criteria does not apply to drying pads or above grade-tanks associated with a closed-loop system.*

**Ground water is less than 50 feet below the bottom of the temporary pit, permanent pit, or below-grade tank.**

- NM Office of the State Engineer - iWATERS database search; USGS; Data obtained from nearby wells

☐ Yes

☐ No

**Within 300 feet of a continuously flowing watercourse, or 200 feet of any other watercourse, lakebed, sinkhole, or playa lake (measured from the ordinary high-water mark).**

- Topographic map; Visual inspection (certification) of the proposed site

☐ Yes

☐ No

**Within 300 feet from a permanent residence, school, hospital, institution, or church in existence at the time of initial application.**

(*Applies to temporary, emergency, or cavitation pits and below-grade tanks*)

- Visual inspection (certification) of the proposed site; Aerial photo; Satellite image

☐ Yes

☐ No

☐ NA

**Within 1000 feet from a permanent residence, school, hospital, institution, or church in existence at the time of initial application.**

(*Applied to permanent pits*)

- Visual inspection (certification) of the proposed site; Aerial photo; Satellite image

☐ Yes

☐ No

☐ NA

**Within 500 horizontal feet of a private, domestic fresh water well or spring that less than five households use for domestic or stock watering purposes, or within 1000 horizontal feet of any other fresh water well or spring, in existence at the time of initial application.**

- NM Office of the State Engineer - iWATERS database search; Visual inspection (certification) of the proposed site.

☐ Yes

☐ No

**Within incorporated municipal boundaries or within a defined municipal fresh water well field covered under a municipal ordinance adopted pursuant to NMSA 1978, Section 3-27-3, as amended**

- Written confirmation or verification from the municipality; Written approval obtained from the municipality

☐ Yes

☐ No

**Within 500 feet of a wetland.**

- US Fish and Wildlife Wetland Identification map; Topographic map; Visual inspection (certification) of the proposed site

☐ Yes

☐ No

**Within the area overlying a subsurface mine.**

- Written confirmation or verification or map from the NM EMNRD - Mining and Mineral Division

☐ Yes

☐ No

**Within an unstable area.**

- Engineering measures incorporated into the design; NM Bureau of Geology & Mineral Resources; USGS; NM Geological Society; Topographic map

☐ Yes

☐ No

**Within a 100-year floodplain**

- FEMA map

☐ Yes

☐ No

11

**Temporary Pits, Emergency Pits and Below-grade Tanks Permit Application Attachment Checklist** Subsection B of 19.15.17.9 NMAC*Instructions: Each of the following items must be attached to the application. Please indicate, by a check mark in the box, that the documents are attached.*

- ☐ Hydrogeologic Report (Below-grade Tanks) - based upon the requirements of Paragraph (4) of Subsection B of 19.15.17.9 NMAC
- ☐ Hydrogeologic Data (Temporary and Emergency Pits) - based upon the requirements of Paragraph (2) of Subsection B of 19.15.17.9
- ☐ Siting Criteria Compliance Demonstrations - based upon the appropriate requirements of 19.15.17.10 NMAC
- ☐ Design Plan - based upon the appropriate requirements of 19.15.17.11 NMAC
- ☐ Operating and Maintenance Plan - based upon the appropriate requirements of 19.15.17.12 NMAC
- ☐ Closure Plan (Please complete Boxes 14 through 18, if applicable) - based upon the appropriate requirements of Subsection C of 19.15.17.9 NMAC and 19.15.17.13 NMAC
- ☐ Previously Approved Design (attach copy of design) API \_\_\_\_\_ or Permit \_\_\_\_\_

12

**Closed-loop Systems Permit Application Attachment Checklist:** Subsection B of 19.15.17.9 NMAC*Instructions: Each of the following items must be attached to the application. Please indicate, by a check mark in the box, that the documents are attached.*

- ☐ Geologic and Hydrogeologic Data (only for on-site closure) - based upon the requirements of Paragraph (3) of Subsection B of 19.15.17.9
- ☐ Siting Criteria Compliance Demonstrations (only for on-site closure) - based upon the appropriate requirements of 19.15.17.10 NMAC
- ☐ Design Plan - based upon the appropriate requirements of 19.15.17.11 NMAC
- ☐ Operating and Maintenance Plan - based upon the appropriate requirements of 19.15.17.12 NMAC
- ☐ Closure Plan (Please complete Boxes 14 through 18, if applicable) - based upon the appropriate requirements of Subsection C of 19.15.17.9 NMAC and 19.15.17.13 NMAC
- ☐ Previously Approved Design (attach copy of design) API \_\_\_\_\_
- ☐ Previously Approved Operating and Maintenance Plan API \_\_\_\_\_

13

**Permanent Pits Permit Application Checklist:** Subsection B of 19.15.17.9 NMAC*Instructions: Each of the following items must be attached to the application. Please indicate, by a check mark in the box, that the documents are attached.*

- ☐ Hydrogeologic Report - based upon the requirements of Paragraph (I) of Subsection B of 19.15.17.9 NMAC
- ☐ Siting Criteria Compliance Demonstrations - based upon the appropriate requirements of 19.15.17.10 NMAC
- ☐ Climatological Factors Assessment
- ☐ Certified Engineering Design Plans - based upon the appropriate requirements of 19.15.17.11 NMAC
- ☐ Dike Protection and Structural Integrity Design: based upon the appropriate requirements of 19.15.17.11 NMAC
- ☐ Leak Detection Design - based upon the appropriate requirements of 19.15.17.11 NMAC
- ☐ Liner Specifications and Compatibility Assessment - based upon the appropriate requirements of 19.15.17.11 NMAC
- ☐ Quality Control/Quality Assurance Construction and Installation Plan
- ☐ Operating and Maintenance Plan - based upon the appropriate requirements of 19.15.17.12 NMAC
- ☐ Freeboard and Overtopping Prevention Plan - based upon the appropriate requirements of 19.15.17.11 NMAC
- ☐ Nuisance or Hazardous Odors, including H<sub>2</sub>S, Prevention Plan
- ☐ Emergency Response Plan
- ☐ Oil Field Waste Stream Characterization
- ☐ Monitoring and Inspection Plan
- ☐ Erosion Control Plan
- ☐ Closure Plan - based upon the appropriate requirements of Subsection C of 19.15.17.9 NMAC and 19.15.17.13 NMAC

14

**Proposed Closure:** 19.15.17.13 NMAC*Instructions: Please complete the applicable boxes, Boxes 14 through 18, in regards to the proposed closure plan.*

- Type: ☐ Drilling ☐ Workover ☐ Emergency ☐ Cavitation ☐ P&A ☐ Permanent Pit ☐ Below-grade Tank ☐ Closed-loop System
- ☐ Alternative
- Proposed Closure Method: ☐ Waste Excavation and Removal
- ☐ Waste Removal (Closed-loop systems only)
- ☐ On-site Closure Method (only for temporary pits and closed-loop systems)
- ☐ In-place Burial ☐ On-site Trench
- ☐ Alternative Closure Method (Exceptions must be submitted to the Santa Fe Environmental Bureau for consideration)

15

**Waste Excavation and Removal Closure Plan Checklist** (19.15.17.13 NMAC) *Instructions: Each of the following items must be attached to the closure plan.**Please indicate, by a check mark in the box, that the documents are attached.*

- ☐ Protocols and Procedures - based upon the appropriate requirements of 19.15.17.13 NMAC
- ☐ Confirmation Sampling Plan (if applicable) - based upon the appropriate requirements of Subsection F of 19.15.17.13 NMAC
- ☐ Disposal Facility Name and Permit Number (for liquids, drilling fluids and drill cuttings)
- ☐ Soil Backfill and Cover Design Specifications - based upon the appropriate requirements of Subsection H of 19.15.17.13 NMAC
- ☐ Re-vegetation Plan - based upon the appropriate requirements of Subsection I of 19.15.17.13 NMAC
- ☐ Site Reclamation Plan - based upon the appropriate requirements of Subsection G of 19.15.17.13 NMAC

**Waste Removal Closure For Closed-loop Systems That Utilize Above Ground Steel Tanks or Haul-off Bins Only:** (19.15.17.13.D NMAC)

Instructions: Please identify the facility or facilities for the disposal of liquids, drilling fluids and drill cuttings. Use attachment if more than two facilities are required.

Disposal Facility Name: \_\_\_\_\_ Disposal Facility Permit #: \_\_\_\_\_

Disposal Facility Name: \_\_\_\_\_ Disposal Facility Permit #: \_\_\_\_\_

Will any of the proposed closed-loop system operations and associated activities occur on or in areas that *will not* be used for future service and

☐ Yes (If yes, please provide the information) ☐ No

Required for impacted areas which will not be used for future service and operations:

☐ Soil Backfill and Cover Design Specification - based upon the appropriate requirements of Subsection H of 19.15.17.13 NMAC

☐ Re-vegetation Plan - based upon the appropriate requirements of Subsection I of 19.15.17.13 NMAC

☐ Site Reclamation Plan - based upon the appropriate requirements of Subsection G of 19.15.17.13 NMAC

**Siting Criteria (Regarding on-site closure methods only:** 19.15.17.10 NMAC

Instructions: Each siting criteria requires a demonstration of compliance in the closure plan. Recommendations of acceptable source material are provided below. Requests regarding changes to certain siting criteria may require administrative approval from the appropriate district office or may be considered an exception which must be submitted to the Santa Fe Environmental Bureau office for consideration of approval. Justifications and/or demonstrations of equivalency are required. Please refer to 19.15.17.10 NMAC for guidance.

Ground water is less than 50 feet below the bottom of the buried waste.

- NM Office of the State Engineer - iWATERS database search; USGS: Data obtained from nearby wells

☐ Yes ☐ No

☐ N/A

Ground water is between 50 and 100 feet below the bottom of the buried waste

- NM Office of the State Engineer - iWATERS database search; USGS: Data obtained from nearby wells

☐ Yes ☐ No

☐ N/A

Ground water is more than 100 feet below the bottom of the buried waste.

- NM Office of the State Engineer - iWATERS database search; USGS: Data obtained from nearby wells

☐ Yes ☐ No

☐ N/A

Within 300 feet of a continuously flowing watercourse, or 200 feet of any other significant watercourse or lakebed, sinkhole, or playa lake (measured from the ordinary high-water mark).

- Topographic map; Visual inspection (certification) of the proposed site

☐ Yes ☐ No

Within 300 feet from a permanent residence, school, hospital, institution, or church in existence at the time of initial application.

- Visual inspection (certification) of the proposed site; Aerial photo; satellite image

☐ Yes ☐ No

☐ Yes ☐ No

Within 500 horizontal feet of a private, domestic fresh water well or spring that less than five households use for domestic or stock watering purposes, or within 1000 horizontal feet of any other fresh water well or spring, in existence at the time of the initial application.

- NM Office of the State Engineer - iWATERS database; Visual inspection (certification) of the proposed site

☐ Yes ☐ No

Within incorporated municipal boundaries or within a defined municipal fresh water well field covered under a municipal ordinance adopted pursuant to NMSA 1978, Section 3-27-3, as amended.

- Written confirmation or verification from the municipality; Written approval obtained from the municipality

☐ Yes ☐ No

Within 500 feet of a wetland

- US Fish and Wildlife Wetland Identification map; Topographic map; Visual inspection (certification) of the proposed site

☐ Yes ☐ No

Within the area overlying a subsurface mine.

- Written confirmation or verification or map from the NM EMNRD-Mining and Mineral Division

☐ Yes ☐ No

Within an unstable area.

- Engineering measures incorporated into the design; NM Bureau of Geology & Mineral Resources; USGS; NM Geological Society; Topographic map

☐ Yes ☐ No

Within a 100-year floodplain.

- FEMA map

☐ Yes ☐ No

**On-Site Closure Plan Checklist:** (19.15.17.13 NMAC) Instructions: Each of the following items must be attached to the closure plan. Please indicate, by a check mark in the box, that the documents are attached.

☐ Siting Criteria Compliance Demonstrations - based upon the appropriate requirements of 19.15.17.10 NMAC

☐ Proof of Surface Owner Notice - based upon the appropriate requirements of Subsection F of 19.15.17.13 NMAC

☐ Construction/Design Plan of Burial Trench (if applicable) based upon the appropriate requirements of 19.15.17.11 NMAC

☐ Construction/Design Plan of Temporary Pit (for in place burial of a drying pad) - based upon the appropriate requirements of 19.15.17.11 NMAC

☐ Protocols and Procedures - based upon the appropriate requirements of 19.15.17.13 NMAC

☐ Confirmation Sampling Plan (if applicable) - based upon the appropriate requirements of Subsection F of 19.15.17.13 NMAC

☐ Waste Material Sampling Plan - based upon the appropriate requirements of Subsection F of 19.15.17.13 NMAC

☐ Disposal Facility Name and Permit Number (for liquids, drilling fluids and drill cuttings or in case on-site closure standards cannot be achieved)

☐ Soil Cover Design - based upon the appropriate requirements of Subsection H of 19.15.17.13 NMAC

☐ Re-vegetation Plan - based upon the appropriate requirements of Subsection I of 19.15.17.13 NMAC

☐ Site Reclamation Plan - based upon the appropriate requirements of Subsection G of 19.15.17.13 NMAC

19

**Operator Application Certification:**

I hereby certify that the information submitted with this application is true, accurate and complete to the best of my knowledge and belief.

Name (Print): \_\_\_\_\_ Title: \_\_\_\_\_  
 Signature: \_\_\_\_\_ Date: \_\_\_\_\_  
 e-mail address: \_\_\_\_\_ Telephone: \_\_\_\_\_

20

**OCD Approval:** ☐ Permit Application (including**OCD Representative Signature:** \_\_\_\_\_**Title:** \_\_\_\_\_**DENIED**

ions (see attachment)

**al Date:** \_\_\_\_\_**Permit Number:** \_\_\_\_\_

21

**Closure Report (required within 60 days of closure completion):** Subsection K of 19.15.17.13 NMAC

*Instructions: Operators are required to obtain an approved closure plan prior to implementing any closure activities and submitting the closure report. The closure report is required to be submitted to the division within 60 days of the completion of the closure activities. Please do not complete this section of the form until an approved closure plan has been obtained and the closure activities have been completed.*

☒ **Closure Completion Date:** July 30, 2012

22

**Closure Method:**

- ☒ Waste Excavation and Removal ☐ On-site Closure Method ☐ Alternative Closure Method ☐ Waste Removal (Closed-loop systems only)  
☐ If different from approved plan, please explain.

23

**Closure Report Regarding Waste Removal Closure For Closed-loop Systems That Utilize Above Ground Steel Tanks or Haul-off Bins Only:**

*Instructions: Please identify the facility or facilities for where the liquids, drilling fluids and drill cuttings were disposed. Use attachment if more than two facilities were utilized.*

Disposal Facility Name: Envirotech / JFJ Landfarm % IEI Disposal Facility Permit Number: NM-01-0011 / NM -01-0010B  
 Disposal Facility Name: Basin Disposal Facility Disposal Facility Permit Number: NM-01-005

Were the closed-loop system operations and associated activities performed on or in areas that *will not* be used for future service and operations?☒ Yes (If yes, please demonstrate compliance to the items below) ☐ No*Required for impacted areas which will not be used for future service and operations:*

- ☒ Site Reclamation (Photo Documentation)  
☒ Soil Backfilling and Cover Installation  
☒ Re-vegetation Application Rates and Seeding Technique

24

**Closure Report Attachment Checklist:** *Instructions: Each of the following items must be attached to the closure report. Please indicate, by a check mark in the box, that the documents are attached.*

- ☐ Proof of Closure Notice (surface owner and division)  
☐ Proof of Deed Notice (required for on-site closure)  
☒ Plot Plan (for on-site closures and temporary pits)  
☒ Confirmation Sampling Analytical Results (if applicable)  
☒ Waste Material Sampling Analytical Results (if applicable)  
☒ Disposal Facility Name and Permit Number  
☒ Soil Backfilling and Cover Installation  
☒ Re-vegetation Application Rates and Seeding Technique  
☒ Site Reclamation (Photo Documentation)

On-site Closure Location: Latitude: 36.532049 °N Longitude: 107.199377 °W NAD ☐ 1927 ☒ 1983

25

**Operator Closure Certification:**

*I hereby certify that the information and attachments submitted with this closure report is true, accurate and complete to the best of my knowledge and belief. I also certify that the closure complies with all applicable closure requirements and conditions specified in the approved closure plan.*

Name (Print): Jamie Goodwin Title: Regulatory Tech.  
 Signature: Jamie Goodwin Date: 1/29/13  
 e-mail address: jamie.l.goodwin@conocophillips.com Telephone: 505-326-9784

**Burlington Resources Oil Gas Company, LP**  
**San Juan Basin**  
**Closure Report**

**Lease Name: SAN JUAN 27-4 UNIT 135M**  
**API No.: 30-039-31039**

In accordance with Rule 19.15.17.13 NMAC the following information describes the closure of the temporary pit referenced above. All proper documentation regarding closure activities is being included with the C-144. The temporary pit for this location was constructed and location drilled before June 16, 2008 (effective date for Rule 19.15.17). While closure of the temporary pit did fall within the rule some dates for submittals are after the rig release date.

- Details on Capping and Covering, where applicable. **(See report)**
- Plot Plan (Pit Diagram) **(Included as an attachment)**
- Inspection Reports **(Included as an attachment)**
- Sampling Results **(Included as an attachment)**
- C-105 **(Included as an attachment)**
- C-141 **(Included as an attachment)**
- Copy of Deed Notice will be filed with County Clerk **(Not required on Federal, State, or Tribal land as stated by FAQ dated October 30, 2008)**

**General Plan:**

1. All free standing liquids will be removed at the start of the pit closure process from the pit and disposed of in a division-approved facility or recycle, reuse or reclaim the liquids in a manner that the appropriate division district office approves.

**All recovered liquids were disposed of at Basin Disposal (Permit #NM-01-005) any sludge or soil required to be removed to facilitate closure was hauled to Envirotech Land Farm (Permit #NM-01-011) and JFJ Landfarm % IEI (Permit #NM-01-0010B).**

2. The surface owner shall be notified of BR's closing of the temporary pit as per the approved closure plan using certified mail, return receipt requested.

**The closure process notification to the landowner was sent via email. (See Attached)(Well located on Federal Land, certified mail is not required for Federal Land per BLM/OCD MOU.)**

3. Within 6 months of the Rig Off status occurring BR will ensure that temporary pits are closed, re-contoured, and reseeded.

**Provision 4 of the closure plan requirements were not met due to rig move off date as noted on C-105 which was prior to pit rule change. Burlington will ensure compliance with this rule in the future.**

4. Notice of Closure will be given to the Aztec Division office between 72 hours and one week of closure via email, or verbally. The notification of closure will include the following:
  - i. Operator's name
  - ii. Location by Unit Letter, Section, Township, and Range. Well name and API number.

**Notification is attached.**

5. All contents of the temporary pit including the liner will be excavated and hauled to the Envirotech Land Farm located 16 miles south of Bloomfield on Angel Peak Road, CR 7175. Permit #NM-01-0011.

**Liner of temporary pit and pit contents was excavated and hauled to Envirotech Land Farm (Permit #NM-01-0011). Care was taken to remove "ALL" of the liner i.e., edges of liner entrenched or buried.**

6. A five point composite sample will be taken of the pit using sampling tools and all samples tested per Subsection B of 19.15.17.13(B)(1)(b). In the event that the criteria are not met, all contents will be handled per Subparagraph (a) of Paragraph (1) of Subsection B of 19.15.17.13 i.e., Dig and haul.

**A five point composite sample was taken from the soil beneath the pit to conclude if a release had occurred using sampling tools and all samples tested per Subsection B of 19.15.17.13(B)(1)(b). (Sample results attached).**

Components	Tests Method	Limit (mg/Kg)	Results
Benzene	EPA SW-846 8021B or 8260B	0.2	ND ug/kg
BTEX	EPA SW-846 8021B or 8260B	50	352 ug/kg
TPH	EPA SW-846 418.1	2500	148mg/kg
GRO/DRO	EPA SW-846 8015M	500	ND mg/kg
Chlorides	EPA 300.1	1000/500	120 mg/L

7. Upon testing standards being passed, the pit area will be backfilled with compacted, non-waste containing, earthen material. The cover shall include one foot of suitable material to establish vegetation at the site, or the background thickness of topsoil, whichever is greater.

**The pit area passed testing standards. The pit area was then backfilled with compacted, non-waste containing, earthen material. The cover included one foot of suitable material to establish vegetation at the site.**

8. Re-contouring of location will match fit, shape, line, form and texture of the surrounding. Re-shaping will include drainage control, prevent ponding, and prevent erosion. Natural drainages will be unimpeded and water bars and/or silt traps will be placed in areas where needed to prevent erosion on a large scale. Final re-contour shall have a uniform appearance with smooth surface, fitting the natural landscape.

**The pit area was re-contoured to match fit, shape, line, form and texture of the surrounding area. Re-shaping included drainage control, to prevent ponding and erosion. Natural drainages were unimpeded and water bars and/or silt traps were placed in areas where needed to prevent erosion on a large scale. Final re-contour has a uniform appearance with smooth surface, fitting the natural landscape.**

9. Notification will be sent to OCD when the reclaimed area is seeded.

**Provision 13 was accomplished on 9/27/2012 with the following seeding regiment:**

Type	Variety or Cultivator	PLS/A
Western wheatgrass	Arriba	3.0
Indian ricegrass	Paloma or Rimrock	3.0
Slender wheatgrass	San Luis	2.0
Crested wheatgrass	Hy-crest	3.0
Bottlebrush Squirreltail	Unknown	2.0
Four-wing Saltbrush	Delar	.25

10. BR shall seed the disturbed areas the first growing season after the operator closes the pit. Seeding will be accomplished via drilling on the contour whenever practical or by other division-approved methods. BLM or

Forest Service stipulated seed mixes will be used on federal lands. Vegetative cover will equal 70% of the native perennial vegetative cover (un-impacted) consisting of at least three native plant species, including at least one grass, but not including noxious weeds, and maintain that cover through two successive growing seasons. Repeat seeding or planting will be continued until successful vegetative growth occurs.

**Provision 14 was accomplished on 9/27/2012 with the above seeding regiment. Seeding was accomplished via drilling on the contour whenever practical or by other division-approved methods. The OCD will be notified once two successive growing seasons have been accomplished by submitting a C-103.**

11. The temporary pit will be located with a steel marker, no less than four inches in diameter, cemented in a hole three feet deep in the center of the onsite burial upon the abandonment of all the wells on the pad. The marker will be flush with the ground to allow access of the active well pad and for safety concerns. The marker will include a threaded collar to be used for future abandonment. The top of the marker will contain a welded steel 12" square plate that indicates the onsite burial of the temporary pit. The plate will be easily removable and a four foot tall riser will be threaded into the top of the collar marker and welded around the base with the operator's information at the time of all wells on the pad are abandoned. The operator's information will include the following: Operator Name, Lease Name, Well Name and number, Unit Number, Section, Township, Range and an indicator that the marker is an onsite burial location.

**The temporary pit was excavated and no on-site burial marker was required.**



**Goodwin, Jamie L**

---

**To:** 'Mark\_Kelly@blm.gov'; jreidinger@fs.fed.us; Jimmy\_Dickerson@blm.gov  
**Subject:** SAN JUAN 27-4 UNIT 135M - SURFACE OWNER NOTIFICATION

The subject well (SAN JUAN 27-4 UNIT 135M) will have a temporary pit that will be closed on-site. Please let me know if you have any questions or concerns.

Thank you,

*Jamie Goodwin*  
*ConocoPhillips*  
*505-326-9784*  
*Jamie.L.Goodwin@conocophillips.com*

District I

1625 N. French Dr., Hobbs, NM 88240

District II

1301 W. Grand Avenue, Artesia, NM 88210

District III

1000 Rio Brazos Rd., Aztec, NM 87410

District IV

1220 S. St. Francis Dr., Santa Fe, NM 87505

State of New Mexico  
Energy, Minerals & Natural Resources Department  
**OIL CONSERVATION DIVISION**  
1220 South St. Francis Dr.  
Santa Fe, NM 87505

Form C-102  
Revised October 12, 2005  
Submit to Appropriate District Office  
State Lease - 7 Copies  
Fee Lease - 3 Copies

☐ AMENDED REPORT**WELL LOCATION AND ACREAGE DEDICATION PLAT**

<sup>1</sup> API Number	<sup>2</sup> Pool Code	<sup>3</sup> Pool Name DAKOTA / MESAVERDE
<sup>4</sup> Property Code	<sup>5</sup> Property Name SAN JUAN 27-4 UNIT	<sup>6</sup> Well Number 135M
<sup>7</sup> OGRID No.	<sup>8</sup> Operator Name BURLINGTON RESOURCES OIL & GAS COMPANY LP	<sup>9</sup> Elevation 7274

<sup>10</sup> SURFACE LOCATION

UL or lot no.	Section	Township	Range	Lot Idn	Feet from the	North/South line	Feet from the	East/West line	County
G	36	27-N	4-W		1942	NORTH	1590	EAST	RIO ARRIBA

<sup>11</sup> Bottom Hole Location If Different From Surface

UL or lot no.	Section	Township	Range	Lot Idn	Feet from the	North/South line	Feet from the	East/West line	County
J	36	27-N	4-W		2150	SOUTH	1725	EAST	RIO ARRIBA

<sup>12</sup> Dedicated Acres 320.00	<sup>13</sup> Joint or Infill	<sup>14</sup> Consolidation Code	<sup>15</sup> Order No.
---	-------------------------------	----------------------------------	-------------------------

NO ALLOWABLE WILL BE ASSIGNED TO THIS COMPLETION UNTIL ALL INTERESTS HAVE BEEN  
CONSOLIDATED OR A NON-STANDARD UNIT HAS BEEN APPROVED BY THE DIVISION

<sup>16</sup> S 89°14'55" W		5207.7' (R)	GLO 1917
		1942'	5280.0' (R) 5292.0' (W)
	<b>WELL FLAG</b> <b>NAD 83</b> <b>LAT: 36.531811° N</b> <b>LONG: 107.199423° W</b> <b>NAD 27</b> <b>LAT: 36°31.908051' N</b> <b>LONG: 107°11.929532' W</b>	1590'	
	<b>BOTTOM HOLE</b> <b>NAD 83</b> <b>LAT: 36.528551° N</b> <b>LONG: 107.199879° W</b> <b>NAD 27</b> <b>LAT: 36°31.712425' N</b> <b>LONG: 107°11.956934' W</b>	1725'	
	2150'		<b>E/2 DEDICATED</b> <b>ACREAGE</b> <b>USA SF-079527</b> <b>SECTION 36,</b> <b>T-27-N, R-4-W</b> NORTH N 0°25'14" W GLO 1917

**<sup>17</sup> OPERATOR CERTIFICATION**

I hereby certify that the information contained herein is true and complete to the best of my knowledge and belief, and that this organization either owns a working interest or unleased mineral interest in the land including the proposed bottom hole location or has a right to drill this well at this location pursuant to a contract with an owner of such a mineral or working interest, or to a voluntary pooling agreement or a compulsory pooling order heretofore entered by the division.

Signature \_\_\_\_\_

Printed Name \_\_\_\_\_

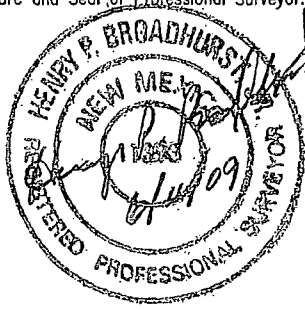
Title and E-mail Address \_\_\_\_\_

Date \_\_\_\_\_

**<sup>18</sup> SURVEYOR CERTIFICATION**

I hereby certify that the well location shown on this plat was plotted from field notes of actual surveys made by me or under my supervision, and that the same is true and correct to the best of my belief.

Date of Survey: 6/2/09  
Signature and Seal of Professional Surveyor: \_\_\_\_\_



Certificate Number: NM 11393

# BURLINGTON RESOURCES OIL & GAS COMPANY LP

SAN JUAN 27-4 UNIT #135M

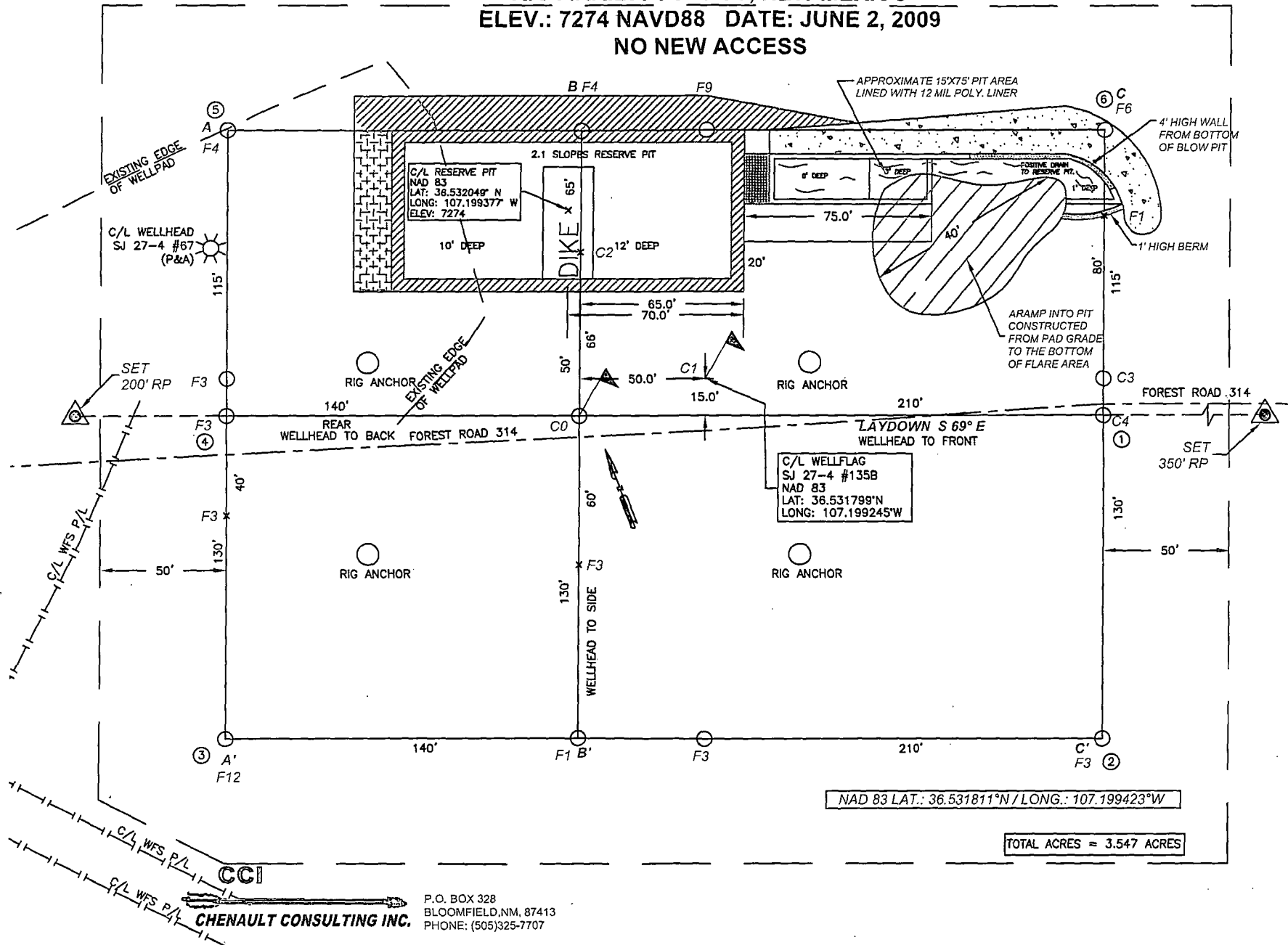
1942' FNL, 1590' FEL

SECTION 36, T-27-N, R-4-W, N.M.P.M.,

RIO ARriba COUNTY, NEW MEXICO

ELEV.: 7274 NAVD88 DATE: JUNE 2, 2009

NO NEW ACCESS



NOTES:

1. RESERVE PIT DIKE: TO BE 8' ABOVE DEEP SIDE (OVERFLOW-3' WIDE AND 1' ABOVE SHALLOW SIDE).
2. C.C.I. SURVEYS IS NOT LIABLE FOR UNDERGROUND UTILITIES OR PIPELINES. CONTRACTOR SHOULD CALL ONE-CALL FOR LOCATION OF ANY MARKED OR UNMARKED BURIED PIPELINES OR CABLES ON WELL PAD AND OR ACCESS ROAD AT LEAST TWO (2) WORKING DAYS PRIOR TO CONSTRUCTION.

District I  
1625 N. French Dr., Hobbs, NM 88240  
District II  
1301 W. Grand Avenue, Artesia, NM 88210  
District III  
1000 Rio Brazos Road, Aztec, NM 87410  
District IV  
1220 S. St. Francis Dr., Santa Fe, NM 87505

State of New Mexico  
Energy Minerals and Natural Resources

Oil Conservation Division  
1220 South St. Francis Dr.  
Santa Fe, NM 87505

Form C-141  
Revised October 10, 2003

Submit 2 Copies to appropriate  
District Office in accordance  
with Rule 116 on back  
side of form

## Release Notification and Corrective Action

### OPERATOR

☐ Initial Report ☒ Final Report

Name of Company <b>Burlington Resources Oil &amp; Gas Company, LP</b>	Contact <b>Jamie Goodwin</b>
Address <b>3401 East 30<sup>th</sup> St, Farmington, NM</b>	Telephone No. <b>(505) 326-9784</b>
Facility Name: <b>San Juan 27-4 Unit 135M</b>	Facility Type: <b>Gas Well</b>
Surface Owner <b>Forest</b>	Mineral Owner <b>Federal</b>
Lease No. <b>SF-079527</b>	

### LOCATION OF RELEASE


Unit Letter <b>G</b>	Section <b>36</b>	Township <b>27N</b>	Range <b>4W</b>	Feet from the	North/South Line	Feet from the	East/West Line	County <b>Rio Arriba</b>
-------------------------	----------------------	------------------------	--------------------	---------------	------------------	---------------	----------------	-----------------------------

Latitude **36.531811** Longitude **107.199423**

### NATURE OF RELEASE

Type of Release <b>Pit Closure Summary</b>	Volume of Release <b>N/A</b>	Volume Recovered <b>N/A</b>
Source of Release <b>N/A</b>	Date and Hour of Occurrence <b>N/A</b>	Date and Hour of Discovery <b>N/A</b>
Was Immediate Notice Given? <input type="checkbox"/> Yes <input type="checkbox"/> No <input checked="" type="checkbox"/> Not Required	If YES, To Whom? <b>N/A</b>	
By Whom? <b>N/A</b>	Date and Hour <b>N/A</b>	
Was a Watercourse Reached? <b>N/A</b> <input type="checkbox"/> Yes <input type="checkbox"/> No	If YES, Volume Impacting the Watercourse. <b>N/A</b>	
If a Watercourse was Impacted, Describe Fully.* <b>N/A</b>		
Describe Cause of Problem and Remedial Action Taken.* <b>N/A</b>		
Describe Area Affected and Cleanup Action Taken.* <b>N/A</b>		

I hereby certify that the information given above is true and complete to the best of my knowledge and understand that pursuant to NMOCD rules and regulations all operators are required to report and/or file certain release notifications and perform corrective actions for releases which may endanger public health or the environment. The acceptance of a C-141 report by the NMOCD marked as "Final Report" does not relieve the operator of liability should their operations have failed to adequately investigate and remediate contamination that pose a threat to ground water, surface water, human health or the environment. In addition, NMOCD acceptance of a C-141 report does not relieve the operator of responsibility for compliance with any other federal, state, or local laws and/or regulations.

Signature: 		<b>OIL CONSERVATION DIVISION</b>	
Printed Name: <b>Jamie Goodwin</b>		Approved by District Supervisor:	
Title: <b>Regulatory Tech.</b>	Approval Date:	Expiration Date:	
E-mail Address: <b>jamie.l.goodwin@conocophillips.com</b>	Conditions of Approval:		Attached <input type="checkbox"/>
Date: <b>1/29/13</b> Phone: <b>(505) 326-9784</b>			

\* Attach Additional Sheets If Necessary



EPA METHOD 8015 Modified  
Nonhalogenated Volatile Organics  
Total Petroleum Hydrocarbons

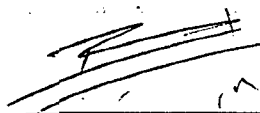
Client:	ConocoPhillips	Project #:	96052-1706
Sample ID:	Back-Ground	Date Reported:	04-25-12
Laboratory Number:	61838	Date Sampled:	04-20-12
Chain of Custody No:	13743	Date Received:	04-20-12
Sample Matrix:	Soil	Date Extracted:	04-23-12
Preservative:	Cool	Date Analyzed:	04-24-12
Condition:	Intact	Analysis Requested:	8015 TPH

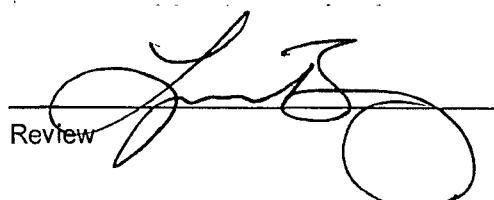
Parameter	Concentration (mg/Kg)	Det. Limit (mg/Kg)
Gasoline Range (C5 - C10)	ND	0.2
Diesel Range (C10 - C28)	ND	0.1
Total Petroleum Hydrocarbons	ND	

ND - Parameter not detected at the stated detection limit.

References: Method 8015B, Nonhalogenated Volatile Organics, Test Methods for Evaluating Solid Waste, SW-846, USEPA, December 1996.

Comments: S.J. 27-4 #135M 135B

  
\_\_\_\_\_  
Analyst

  
\_\_\_\_\_  
Review



EPA METHOD 8015 Modified  
Nonhalogenated Volatile Organics  
Total Petroleum Hydrocarbons

Client:	ConocoPhillips	Project #:	96052-1706
Sample ID:	Reserve Pit	Date Reported:	04-25-12
Laboratory Number:	61839	Date Sampled:	04-20-12
Chain of Custody No:	13743	Date Received:	04-20-12
Sample Matrix:	Soil	Date Extracted:	04-23-12
Preservative:	Cool	Date Analyzed:	04-24-12
Condition:	Intact	Analysis Requested:	8015 TPH

Parameter	Concentration (mg/Kg)	Det. Limit (mg/Kg)
Gasoline Range (C5 - C10)	ND	0.2
Diesel Range (C10 - C28)	ND	0.1
Total Petroleum Hydrocarbons	ND	

ND - Parameter not detected at the stated detection limit.

References: Method 8015B, Nonhalogenated Volatile Organics, Test Methods for Evaluating Solid Waste, SW-846, USEPA, December 1996.

Comments: S.J. 27-4 #135M 135B

  
Analyst

  
Review



EPA Method 8015 Modified  
Nonhalogenated Volatile Organics  
Total Petroleum Hydrocarbons

Quality Assurance Report

Client:	QA/QC	Project #:	N/A
Sample ID:	0424TCAL QA/QC	Date Reported:	04-25-12
Laboratory Number:	61812	Date Sampled:	N/A
Sample Matrix:	Methylene Chloride	Date Received:	N/A
Preservative:	N/A	Date Analyzed:	04-24-12
Condition:	N/A	Analysis Requested:	TPH

	I-Cal Date	I-Cal RF	C-Cal RF	% Difference	Accept Range
Gasoline Range C5 - C10	04-24-12	9.9960E+02	1.0000E+03	0.04%	0 - 15%
Diesel Range C10 - C28	04-24-12	9.9960E+02	1.0000E+03	0.04%	0 - 15%

Blank Conc. (mg/L = mg/Kg)	Concentration	Detection Limit
Gasoline Range C5 - C10	ND	0.2
Diesel Range C10 - C28	ND	0.1
Total Petroleum Hydrocarbons	ND	

Duplicate Conc. (mg/Kg)	Sample	Duplicate	% Difference	Accept Range
Gasoline Range C5 - C10	ND	ND	0.0%	0 - 30%
Diesel Range C10 - C28	ND	ND	0.0%	0 - 30%

Spike Conc. (mg/Kg)	Sample	Spike Added	Spike Result	% Recovery	Accept Range
Gasoline Range C5 - C10	ND	250	294	118%	75 - 125%
Diesel Range C10 - C28	ND	250	287	115%	75 - 125%

ND - Parameter not detected at the stated detection limit.

References: Method 8015B, Nonhalogenated Volatile Organics, Test Methods for Evaluating Solid Wastewater, SW-846, USEPA, December 1996.

Comments: QA/QC for Samples 61812-61819, 61832-61835 and 61838-61839

Analyst

Review



EPA METHOD 8021  
AROMATIC VOLATILE ORGANICS

Client:	ConocoPhillips	Project #:	96052-1706
Sample ID:	Back-Ground	Date Reported:	04-30-12
Laboratory Number:	61838	Date Sampled:	04-20-12
Chain of Custody:	13743	Date Received:	04-20-12
Sample Matrix:	Soil	Date Analyzed:	04-30-12
Preservative:	Cool	Date Extracted:	04-23-12
Condition:	Intact	Analysis Requested:	BTEX
		Dilution:	50

Parameter	Concentration (ug/Kg)	Det. Limit (ug/Kg)
Benzene	ND	10.0
Toluene	11.3	10.0
Ethylbenzene	ND	10.0
p,m-Xylene	12.3	10.0
o-Xylene	ND	10.0
Total BTEX	23.6	

ND - Parameter not detected at the stated detection limit.

Surrogate Recoveries:	Parameter	Percent Recovery
	Fluorobenzene	89.0 %
	1,4-difluorobenzene	99.1 %
	Bromochlorobenzene	105 %

References: Method 5030B, Purge-and-Trap, Test Methods for Evaluating Solid Waste, SW-846, USEPA, December 1996.

Method 8021B, Aromatic Volatile Organics, Test Methods for Evaluating Solid Waste, SW-846, USEPA, December 1996.

Comments: S.J. 27-4 #135 M 135B

Analyst

Review



Client:	ConocoPhillips	Project #:	96052-1706
Sample ID:	Reserve Pit	Date Reported:	04-30-12
Laboratory Number:	61839	Date Sampled:	04-20-12
Chain of Custody:	13743	Date Received:	04-20-12
Sample Matrix:	Soil	Date Analyzed:	04-30-12
Preservative:	Cool	Date Extracted:	04-23-12
Condition:	Intact	Analysis Requested:	BTEX
		Dilution:	50

Parameter	Concentration (ug/Kg)	Det. Limit (ug/Kg)
Benzene	ND	10.0
Toluene	72.3	10.0
Ethylbenzene	23.7	10.0
p,m-Xylene	189	10.0
o-Xylene	67.4	10.0
<b>Total BTEX</b>	<b>352</b>	

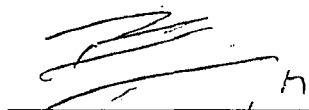
ND - Parameter not detected at the stated detection limit.

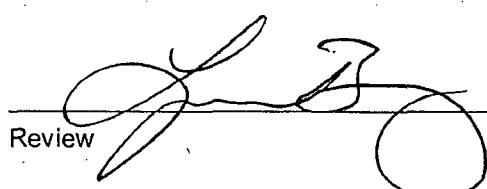
Surrogate Recoveries:	Parameter	Percent Recovery
	Fluorobenzene	85.3 %
	1,4-difluorobenzene	93.3 %
	Bromochlorobenzene	100 %

References: Method 5030B, Purge-and-Trap, Test Methods for Evaluating Solid Waste, SW-846, USEPA, December 1996.

Method 8021B, Aromatic Volatile Organics, Test Methods for Evaluating Solid Waste, SW-846, USEPA, December 1996.

Comments: **S.J. 27-4 #135 M 135B**

  
 Analyst

  
 Review



EPA METHOD 8021  
AROMATIC VOLATILE ORGANICS

Client:	N/A	Project #:	N/A
Sample ID:	0430BCAL QA/QC	Date Reported:	04-30-12
Laboratory Number:	61832	Date Sampled:	N/A
Sample Matrix:	Soil	Date Received:	N/A
Preservative:	N/A	Date Analyzed:	04-30-12
Condition:	N/A	Analysis:	BTEX
		Dilution:	50

Calibration (and Detection Limits (ug/L))	I-Cal RF	C-Cal RF	%Diff	Blank Conc	Detect Limit
Accept Range 0-15%					
Benzene	4.4472E-06	4.4472E-06	0.000	ND	0.2
Toluene	4.2748E-06	4.2748E-06	0.000	ND	0.2
Ethylbenzene	4.7561E-06	4.7561E-06	0.000	ND	0.2
p,m-Xylene	3.5352E-06	3.5352E-06	0.000	ND	0.2
o-Xylene	5.0434E-06	5.0434E-06	0.000	ND	0.2

Duplicate Conc. (ug/Kg)	Sample	Duplicate	%Diff	Accept Range	Detect Limit
Benzene	ND	ND	0.00	0 - 30%	10
Toluene	24.6	23.2	0.06	0 - 30%	10
Ethylbenzene	203	206	0.02	0 - 30%	10
p,m-Xylene	28.5	33.4	0.17	0 - 30%	10
o-Xylene	47.8	32.9	0.31	0 - 30%	10

Spike Conc. (ug/Kg)	Sample	Amount Spiked	Spiked Sample	% Recovery	Accept Range
Benzene	ND	2500	2510	100	39 - 150
Toluene	24.6	2500	2440	96.6	46 - 148
Ethylbenzene	203	2500	2860	106	32 - 160
p,m-Xylene	28.5	5000	5070	101	46 - 148
o-Xylene	47.8	2500	2580	101	46 - 148

ND - Parameter not detected at the stated detection limit.

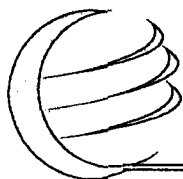
Dilution: Spike and spiked sample concentration represent a dilution proportional to sample dilution.

References: Method 5030B, Purge-and-Trap, Test Methods for Evaluating Solid Waste, SW-846, USEPA, December 1996.  
Method 8021B, Aromatic and Halogenated Volatiles by Gas Chromatography Using Photoionization and/or Electrolytic Conductivity Detectors, SW-846, USEPA December 1996.

Comments: QA/QC for Samples 61832, 61838-61839, 61849-61850, 61852, 61860, 61863 and 61870-61871.

Analyst

Review



# envirotech

Analytical Laboratory

EPA METHOD 418.1  
TOTAL PETROLEUM HYDROCARBONS

Client:	ConocoPhillips	Project #:	96052-1706
Sample ID:	Back-Ground	Date Reported:	05-03-12
Laboratory Number:	61838	Date Sampled:	04-20-12
Chain of Custody No:	13743	Date Received:	04-20-12
Sample Matrix:	Soil	Date Extracted:	04-30-12
Preservative:	Cool	Date Analyzed:	04-30-12
Condition:	Intact	Analysis Needed:	TPH-418.1

Parameter	Concentration (mg/kg)	Det. Limit (mg/kg)
Total Petroleum Hydrocarbons	ND	14.8

ND = Parameter not detected at the stated detection limit.

References: Method 418.1, Petroleum Hydrocarbons, Total Recoverable, Chemical Analysis of Water and Waste, USEPA Storet No. 4551, 1978.

Comments: S.J. 27-4 #135M 135B

Analyst

Review



EPA METHOD 418.1  
TOTAL PETROLEUM HYDROCARBONS

Client:	ConocoPhillips	Project #:	96052-1706
Sample ID:	Reserve Pit	Date Reported:	05-03-12
Laboratory Number:	61839	Date Sampled:	04-20-12
Chain of Custody No:	13743	Date Received:	04-20-12
Sample Matrix:	Soil	Date Extracted:	04-30-12
Preservative:	Cool	Date Analyzed:	04-30-12
Condition:	Intact	Analysis Needed:	TPH-418.1

Parameter	Concentration (mg/kg)	Det. Limit (mg/kg)
Total Petroleum Hydrocarbons	148	14.8

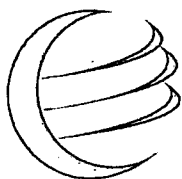
ND = Parameter not detected at the stated detection limit.

References: Method 418.1, Petroleum Hydrocarbons, Total Recoverable, Chemical Analysis of Water and Waste, USEPA Storet No. 4551, 1978.

Comments: S.J. 27-4 #135M 135B

  
\_\_\_\_\_  
Analyst

  
\_\_\_\_\_  
Review



# envirotech

Analytical Laboratory

## EPA METHOD 418.1 TOTAL PETROLEUM HYDROCARBONS QUALITY ASSURANCE REPORT

Client:	QA/QC	Project #:	N/A
Sample ID:	QA/QC	Date Reported:	05-03-12
Laboratory Number:	04-30-TPH.QA/QC 61838	Date Sampled:	N/A
Sample Matrix:	Freon-113	Date Analyzed:	04-30-12
Preservative:	N/A	Date Extracted:	04-30-12
Condition:	N/A	Analysis Needed:	TPH

Calibration	I-Cal Date	C-Cal Date	I-Cal RF	C-Cal RF	% Difference	Accept Range
	04-26-12	04-30-12	1,850	1,720	7.0%	+/- 10%

Blank Conc. (mg/Kg)	Concentration	Detection Limit
TPH	ND	14.8

Duplicate Conc. (mg/Kg)	Sample	Duplicate	% Difference	Accept Range
TPH	14.8	14.8	0.0%	+/- 30%

Spike Conc. (mg/Kg)	Sample	Spike Added	Spike Result	% Recovery	Accept Range
TPH	14.8	2,000	1,850	91.8%	80 - 120%

ND = Parameter not detected at the stated detection limit.

References: Method 418.1, Petroleum Hydrocarbons, Total Recoverable, Chemical Analysis of Water and Waste, USEPA Storet No. 4551, 1978.

Comments: QA/QC for Samples 61838-61839.

Analyst

Review

Client:	ConocoPhillips	Project #:	96052-1706
Sample ID:	Back-Ground	Date Reported:	04-24-12
Lab ID#:	61838	Date Sampled:	04-20-12
Sample Matrix:	Soil	Date Received:	04-20-12
Preservative:	Cool	Date Analyzed:	04-24-12
Condition:	Intact	Chain of Custody:	13743

Parameter	Concentration (mg/Kg)
-----------	-----------------------

**Total Chloride****50**

Reference: U.S.E.P.A., 4500B, "Methods for Chemical Analysis of Water and Wastes", 1983.  
Standard Methods For The Examination of Water And Waste Water", 18th ed., 1992.

Comments: **S.J. 27-4 #135M 135B**

  
\_\_\_\_\_  
Analyst  
\_\_\_\_\_  
Review

Client:	ConocoPhillips	Project #:	96052-1706
Sample ID:	Reserve Pit	Date Reported:	04-24-12
Lab ID#:	61839	Date Sampled:	04-20-12
Sample Matrix:	Soil	Date Received:	04-20-12
Preservative:	Cool	Date Analyzed:	04-24-12
Condition:	Intact	Chain of Custody:	13743

Parameter	Concentration (mg/Kg)
-----------	-----------------------

**Total Chloride****120**

Reference: U.S.E.P.A., 4500B, "Methods for Chemical Analysis of Water and Wastes", 1983.  
Standard Methods For The Examination of Water And Waste Water", 18th ed., 1992.

Comments: **S.J. 27-4 #135M 135B**

  
\_\_\_\_\_  
Analyst  
\_\_\_\_\_  
Review

Submit To Appropriate District Office Two Copies District I 1625 N. French Dr., Hobbs, NM 88240 District II 1301 W. Grand Avenue, Artesia, NM 88210 District III 1000 Rio Brazos Rd., Aztec, NM 87410 District IV 1220 S. St. Francis Dr., Santa Fe, NM 87505		<b>State of New Mexico</b> <b>Energy, Minerals and Natural Resources</b>  <b>Oil Conservation Division</b> <b>1220 South St. Francis Dr.</b> <b>Santa Fe, NM 87505</b>			<b>Form C-105</b> July 17, 2008		
		1. WELL API NO. <b>30-039-31039</b>					
		2. Type of Lease <input type="checkbox"/> STATE <input type="checkbox"/> FEE <input checked="" type="checkbox"/> FED/INDIAN					
		3. State Oil & Gas Lease No. <b>SF-079527</b>					
<b>WELL COMPLETION OR RECOMPLETION REPORT AND LOG</b>							
4. Reason for filing:  <input type="checkbox"/> <b>COMPLETION REPORT</b> (Fill in boxes #1 through #31 for State and Fee wells only)  <input checked="" type="checkbox"/> <b>C-144 CLOSURE ATTACHMENT</b> (Fill in boxes #1 through #9, #15 Date Rig Released and #32 and/or #33; attach this and the plat to the C-144 closure report in accordance with 19.15.17.13.K NMAC)				5. Lease Name or Unit Agreement Name <b>San Juan 27-4 Unit</b>			
				6. Well Number: <b>135M</b>			
7. Type of Completion: <input checked="" type="checkbox"/> NEW WELL <input type="checkbox"/> WORKOVER <input type="checkbox"/> DEEPENING <input type="checkbox"/> PLUGBACK <input type="checkbox"/> DIFFERENT RESERVOIR <input type="checkbox"/> OTHER							
8. Name of Operator <b>Burlington Resources Oil Gas Company, LP</b>				9. OGRID <b>14538</b>			
10. Address of Operator PO Box 4298, Farmington, NM 87499				11. Pool name or Wildcat			
12. Location	Unit Ltr	Section	Township	Range	Lot	Feet from the	
Surface:							
BH:							
13. Date Spudded	14. Date T.D. Reached	15. Date Rig Released <b>10/06/2011</b>		16. Date Completed (Ready to Produce)		17. Elevations (DF and RKB, RT, GR, etc.)	
18. Total Measured Depth of Well		19. Plug Back Measured Depth		20. Was Directional Survey Made?		21. Type Electric and Other Logs Run	
22. Producing Interval(s), of this completion - Top, Bottom, Name							
<b>23. CASING RECORD (Report all strings set in well)</b>							
CASING SIZE	WEIGHT LB./FT.	DEPTH SET		HOLE SIZE	CEMENTING RECORD	AMOUNT PULLED	
24. LINER RECORD				25. TUBING RECORD			
SIZE	TOP	BOTTOM	SACKS CEMENT	SCREEN	SIZE	DEPTH SET	
26. Perforation record (interval, size, and number)				27. ACID, SHOT, FRACTURE, CEMENT, SQUEEZE, ETC.			
				DEPTH INTERVAL	AMOUNT AND KIND MATERIAL USED		
<b>28. PRODUCTION</b>							
Date First Production		Production Method ( <i>Flowing, gas lift, pumping - Size and type pump</i> )			Well Status ( <i>Prod. or Shut-in</i> )		
Date of Test	Hours Tested	Choke Size	Prod'n For Test Period	Oil - Bbl	Gas - MCF	Water - Bbl.	
Flow Tubing Press.	Casing Pressure	Calculated 24-Hour Rate	Oil - Bbl.	Gas - MCF	Water - Bbl.	Oil Gravity - API - ( <i>Corr.</i> )	
29. Disposition of Gas ( <i>Sold, used for fuel, vented, etc.</i> )					30. Test Witnessed By		
31. List Attachments							
32. If a temporary pit was used at the well, attach a plat with the location of the temporary pit.							
33. If an on-site burial was used at the well, report the exact location of the on-site burial:							
N/A DIG & HAUL                      Latitude <b>36.532049°N</b> Longitude <b>107.199377°W</b> NAD <input type="checkbox"/> 1927 <input checked="" type="checkbox"/> 1983							
I hereby certify that the information shown on both sides of this form is true and complete to the best of my knowledge and belief							
Signature 				Printed Name <b>Jamie Goodwin</b> Title: <b>Regulatory Tech.</b>		Date: <b>1/29/2013</b>	
E-mail Address <b>jamie.l.goodwin@conocophillips.com</b>							





**Pit Closure Form:**

Date: 7-30-12

Well Name: SJ 27-4 135M/135B

Footages: 1947 FML, 1538 FEL Unit Letter: G

Section: 36, T-27-N, R-4-W, County: R.A. State: NM

Contractor Closing Pit: MM

Pit Closure Start Date: 7-27-2012

Pit Closure Complete Date: 7-30-2012

Construction Inspector: Norman Faver Date: 7-30-12

Inspector Signature: Norman Faver

Partial Dig & haul  
to achieve HFT cover

Revised 11/4/10

Office Use Only:  
Subtask \_\_\_\_\_  
DSM \_\_\_\_\_  
Folder \_\_\_\_\_

## Goodwin, Jamie L

---

**From:** Payne, Wendy F  
**Sent:** Tuesday, July 17, 2012 8:28 AM  
**To:** (Brandon.Powell@state.nm.us); GRP:SJBU Regulatory; Jonathan Kelly; (lpuepke@cimarronsvc.com); Eli (Cimarron) (eliv@cimarronsvc.com); James (Cimarron) (jwood@cimarronsvc.com); Mark Kelly; Randy McKee; Robert Switzer; Sherrie Landon; Bassing, Kendal R.; Dee, Harry P; Eric Smith (sconsulting.eric@gmail.com); Faver Norman; Fred Martinez; Lowe, Terry; McCarty Jr, Chuck R; Payne, Wendy F; Peter, Dan J; Smith, Mike W; Steve McGlasson; Tally, Ethel; Becker, Joey W; Bowker, Terry D; Brant Fourr; Frost, Ryan M; Goosey, Paul P; Gordon Chenault; Green, Cary J; GRP:SJBU Production Leads; Hockett, Christy R; Bassing, Kendal R.; Kennedy, Jim R; Leboeuf, Davin J; Lopez, Richard A; Nelson, Garry D; O'Nan, Mike J.; Peace, James T; Poulson, Mark E; Schaaphok, Bill; Smith, Randall O; Spearman, Bobby E; Stamets, Steve A; Thibodeaux, Gordon A; Eddie; Quintana Tony (tquintana@flintenergy.com); Barton, Austin; Blakley, Mac; Coats, Nathan W; Farrell, Juanita R; Maxwell, Mary Alice; McWilliams, Peggy L; Rhoads, Travis P; Saiz, Kooper K; Seabolt, Elmo F; Thompson, Trey  
**Cc:** Jo Gomez; Montya Dona (donamontoya@aol.com)  
**Subject:** Reclamation Notice: San Juan 27-4 Unit 135B and San Juan 27-4 Unit 135M (Area 25 \* Run 554)  
**Importance:** High  
**Attachments:** San Juan 27-4 Unit 135B.pdf; San Juan 27-4 Unit 135M.pdf

M&M Trucking will move a tractor to the **San Juan 27-4 Unit 135B & San Juan 27-4 Unit 135M** (twinned) to start the reclamation process on **Monday, July 23, 2012**. Please contact Norm Faver (320-0670) if you have question or need further assistance. This will be a partial dig and haul on the pit. (Please split charges between the 2 network numbers. Thanks)



San Juan 27-4 San Juan 27-4  
Jnit 135B.pdf (2.Jnit 135M.pdf (2..

Burlington Resources Well - Network # 10309222 - Activity Code D250 (reclamation) & D260 (pit closure) - PO: kaitlw  
Rio Arriba County, NM

### San Juan 27-4 Unit 135B - Forest

Onsite: JJ Miller - 7-14-09  
Twin: San Juan 27-4 Unit 135M (ND) & San Juan 27-4 Unit 67 (P&A)  
1947' FNL, 1538' FEL  
Sec.36, T27N, R4W  
Unit Letter " G "  
Lease # SF-079527  
Unit Agreement # NMNM-78408A-MV  
BH: SENE,Sec.36,T27N, R4W  
Latitude: 36° 31' 54" N (NAD 83)  
Longitude: 107° 11' 57" W (NAD 83)  
Elevation: 7275'  
Total Acres Disturbed: 3.547 acres -  
Access Road:n/a  
API # 30-039-31028  
Within City Limits: NO  
PIT LINED: YES  
NOTE: Arch Monitoring IS required on this location. WCRM - 326-7420

~~~~~

Burlington Resources Well - Network # 10309170 - Activity Code D250 (reclamation) & D260 (pit closure) - PO: kaitlw  
Rio Arriba County, NM

**San Juan 27-4 Unit 135M - Forest**

Onsite: JJ Miller - 7-14-09

Twin: San Juan 27-4 Unit 135B (ND) & San Juan 27-4 Unit 67 (P&A)

1942' FNL, 1590' FEL

Sec.36.T27N,R4W

Unit Letter " G "

Lease # SF-079527

Unit Agreement # NMNM-78408A-MV

BH: NWSE, Sec.36, T27N, R4W

Latitude: 36° 31' 55" N (NAD 83)

Longitude: 107° 11' 58" W (NAD 83)

Elevation: 7274'

Total Acres Disturbed: 3.547 acres

Access Road:n/a

API # 30-039-31039

Within City Limits: NO

PIT LINED: YES

NOTE: Arch Monitoring IS required on this location. WCRM - 326-7420

(Please split charges between the 2 network numbers. Thanks)

**Wendy Payne**

**ConocoPhillips-SJBU**

**505-326-9533**

*Wendy.F.Payne@conocophillips.com*



Reclamation Form:

Date: 11-8-12

Well Name: S3 27-4 135M / S3 27-4 135B

Footages: 1947 FNL, 1538 FEL Unit Letter: G

Section: 36, T-27-N, R-4-W, County: RA State: SJ

Reclamation Contractor: MM

Reclamation Start Date: 7-26-12

Reclamation Complete Date: 8-3-12

Road Completion Date: 8-6-12

Seeding Date: 9-27-12

**\*\*PIT MARKER STATUS (When Required):** Picture of Marker set needed

MARKER PLACED : 8-16-12 (DATE)

LATITUDE: 36 31.916

LONGITUDE: 107 11.951

Pit Manifold removed 7-25-12 (DATE)

Construction Inspector: Norman Faver Date: 11-8-12

Inspector Signature: Norman Faver

Office Use Only: Subtask ☒ DSM ☐ Folder ☐ Pictures ☐





| WELL NAME:<br>San Juan 27-4 Unit 135B & 135M                    |                                                                                                   | OPEN PIT INSPECTION FORM                                                                                    |                                                                                                             |                                                                                                             |                                                                                                             |                                                                                                             |                                                                                                             |                                                                                                             |                                                                                                             | ConocoPhillips                                                                                                                    |  |
|-----------------------------------------------------------------|---------------------------------------------------------------------------------------------------|-------------------------------------------------------------------------------------------------------------|-------------------------------------------------------------------------------------------------------------|-------------------------------------------------------------------------------------------------------------|-------------------------------------------------------------------------------------------------------------|-------------------------------------------------------------------------------------------------------------|-------------------------------------------------------------------------------------------------------------|-------------------------------------------------------------------------------------------------------------|-------------------------------------------------------------------------------------------------------------|-----------------------------------------------------------------------------------------------------------------------------------|--|
| INSPECTOR                                                       |                                                                                                   | E. Perry                                                                                                    | E. Perry                                                                                                    | E. Perry                                                                                                    | Fred                                                                                                        | E. Perry                                                                                                    | Fred                                                                                                        | Fred Mtz                                                                                                    | Fred Mtz                                                                                                    | Fred Mtz                                                                                                                          |  |
| DATE                                                            |                                                                                                   | 07/28/11                                                                                                    | 08/05/11                                                                                                    | 08/15/11                                                                                                    | 08/24/11                                                                                                    | 08/30/11                                                                                                    | 09/01/11                                                                                                    | 09/27/11                                                                                                    | 10/06/11                                                                                                    | 10/20/11                                                                                                                          |  |
| *Please request for pit extension after 26 weeks                |                                                                                                   | Week 1                                                                                                      | Week 2                                                                                                      | Week 3                                                                                                      | Week 4                                                                                                      | Week 5                                                                                                      | Week 6                                                                                                      | Week 7                                                                                                      | Week 8                                                                                                      | Week 9                                                                                                                            |  |
| PIT STATUS                                                      |                                                                                                   | <input type="checkbox"/> Drilled<br><input type="checkbox"/> Completed<br><input type="checkbox"/> Clean-Up | <input type="checkbox"/> Drilled<br><input type="checkbox"/> Completed<br><input type="checkbox"/> Clean-Up | <input type="checkbox"/> Drilled<br><input type="checkbox"/> Completed<br><input type="checkbox"/> Clean-Up | <input type="checkbox"/> Drilled<br><input type="checkbox"/> Completed<br><input type="checkbox"/> Clean-Up | <input type="checkbox"/> Drilled<br><input type="checkbox"/> Completed<br><input type="checkbox"/> Clean-Up | <input type="checkbox"/> Drilled<br><input type="checkbox"/> Completed<br><input type="checkbox"/> Clean-Up | <input type="checkbox"/> Drilled<br><input type="checkbox"/> Completed<br><input type="checkbox"/> Clean-Up | <input type="checkbox"/> Drilled<br><input type="checkbox"/> Completed<br><input type="checkbox"/> Clean-Up | <input checked="" type="checkbox"/> Drilled<br><input checked="" type="checkbox"/> Completed<br><input type="checkbox"/> Clean-Up |  |
| LOCATION                                                        | Is the location marked with the proper flagging? (Const. Zone, poles, pipelines, etc.)            | <input checked="" type="checkbox"/> Yes <input type="checkbox"/> No                                         | <input checked="" type="checkbox"/> Yes <input type="checkbox"/> No                                         | <input checked="" type="checkbox"/> Yes <input type="checkbox"/> No                                         | <input checked="" type="checkbox"/> Yes <input type="checkbox"/> No                                         | <input checked="" type="checkbox"/> Yes <input type="checkbox"/> No                                         | <input checked="" type="checkbox"/> Yes <input type="checkbox"/> No                                         | <input type="checkbox"/> Yes <input type="checkbox"/> No                                                    | <input type="checkbox"/> Yes <input type="checkbox"/> No                                                    | <input checked="" type="checkbox"/> Yes <input type="checkbox"/> No                                                               |  |
|                                                                 | Is the temporary well sign on location and visible from access road?                              | <input checked="" type="checkbox"/> Yes <input type="checkbox"/> No                                         | <input checked="" type="checkbox"/> Yes <input type="checkbox"/> No                                         | <input checked="" type="checkbox"/> Yes <input type="checkbox"/> No                                         | <input checked="" type="checkbox"/> Yes <input type="checkbox"/> No                                         | <input checked="" type="checkbox"/> Yes <input type="checkbox"/> No                                         | <input checked="" type="checkbox"/> Yes <input type="checkbox"/> No                                         | <input type="checkbox"/> Yes <input type="checkbox"/> No                                                    | <input type="checkbox"/> Yes <input type="checkbox"/> No                                                    | <input checked="" type="checkbox"/> Yes <input type="checkbox"/> No                                                               |  |
| ENVIRONMENTAL COMPLIANCE                                        | Is the access road in good driving condition? (deep ruts, bladed)                                 | <input checked="" type="checkbox"/> Yes <input type="checkbox"/> No                                         | <input checked="" type="checkbox"/> Yes <input type="checkbox"/> No                                         | <input checked="" type="checkbox"/> Yes <input type="checkbox"/> No                                         | <input checked="" type="checkbox"/> Yes <input type="checkbox"/> No                                         | <input checked="" type="checkbox"/> Yes <input type="checkbox"/> No                                         | <input checked="" type="checkbox"/> Yes <input type="checkbox"/> No                                         | <input type="checkbox"/> Yes <input type="checkbox"/> No                                                    | <input type="checkbox"/> Yes <input type="checkbox"/> No                                                    | <input checked="" type="checkbox"/> Yes <input type="checkbox"/> No                                                               |  |
|                                                                 | Are the culverts free from debris or any object preventing flow?                                  | <input checked="" type="checkbox"/> Yes <input type="checkbox"/> No                                         | <input checked="" type="checkbox"/> Yes <input type="checkbox"/> No                                         | <input checked="" type="checkbox"/> Yes <input type="checkbox"/> No                                         | <input checked="" type="checkbox"/> Yes <input type="checkbox"/> No                                         | <input checked="" type="checkbox"/> Yes <input type="checkbox"/> No                                         | <input checked="" type="checkbox"/> Yes <input type="checkbox"/> No                                         | <input type="checkbox"/> Yes <input type="checkbox"/> No                                                    | <input type="checkbox"/> Yes <input type="checkbox"/> No                                                    | <input checked="" type="checkbox"/> Yes <input type="checkbox"/> No                                                               |  |
|                                                                 | Is the top of the location bladed and in good operating condition?                                | <input checked="" type="checkbox"/> Yes <input type="checkbox"/> No                                         | <input checked="" type="checkbox"/> Yes <input type="checkbox"/> No                                         | <input checked="" type="checkbox"/> Yes <input type="checkbox"/> No                                         | <input checked="" type="checkbox"/> Yes <input type="checkbox"/> No                                         | <input checked="" type="checkbox"/> Yes <input type="checkbox"/> No                                         | <input checked="" type="checkbox"/> Yes <input type="checkbox"/> No                                         | <input type="checkbox"/> Yes <input type="checkbox"/> No                                                    | <input type="checkbox"/> Yes <input type="checkbox"/> No                                                    | <input type="checkbox"/> Yes <input checked="" type="checkbox"/> No                                                               |  |
|                                                                 | Is the fence stock-proof? (fences tight, barbed wire, fence clips in place?)                      | <input type="checkbox"/> Yes <input checked="" type="checkbox"/> No                                         | <input checked="" type="checkbox"/> Yes <input type="checkbox"/> No                                         | <input type="checkbox"/> Yes <input checked="" type="checkbox"/> No                                         | <input type="checkbox"/> Yes <input checked="" type="checkbox"/> No                                         | <input checked="" type="checkbox"/> Yes <input type="checkbox"/> No                                         | <input checked="" type="checkbox"/> Yes <input type="checkbox"/> No                                         | <input type="checkbox"/> Yes <input type="checkbox"/> No                                                    | <input type="checkbox"/> Yes <input type="checkbox"/> No                                                    | <input checked="" type="checkbox"/> Yes <input type="checkbox"/> No                                                               |  |
|                                                                 | Is the pit liner in good operating condition? (no tears, up-rooting corners, etc.)                | <input checked="" type="checkbox"/> Yes <input type="checkbox"/> No                                         | <input checked="" type="checkbox"/> Yes <input type="checkbox"/> No                                         | <input checked="" type="checkbox"/> Yes <input type="checkbox"/> No                                         | <input checked="" type="checkbox"/> Yes <input type="checkbox"/> No                                         | <input checked="" type="checkbox"/> Yes <input type="checkbox"/> No                                         | <input checked="" type="checkbox"/> Yes <input type="checkbox"/> No                                         | <input type="checkbox"/> Yes <input type="checkbox"/> No                                                    | <input type="checkbox"/> Yes <input type="checkbox"/> No                                                    | <input checked="" type="checkbox"/> Yes <input type="checkbox"/> No                                                               |  |
|                                                                 | Is the the location free from trash, oil stains and other materials? (cables, pipe threads, etc.) | <input checked="" type="checkbox"/> Yes <input type="checkbox"/> No                                         | <input checked="" type="checkbox"/> Yes <input type="checkbox"/> No                                         | <input checked="" type="checkbox"/> Yes <input type="checkbox"/> No                                         | <input checked="" type="checkbox"/> Yes <input type="checkbox"/> No                                         | <input type="checkbox"/> Yes <input checked="" type="checkbox"/> No                                         | <input type="checkbox"/> Yes <input checked="" type="checkbox"/> No                                         | <input type="checkbox"/> Yes <input type="checkbox"/> No                                                    | <input type="checkbox"/> Yes <input type="checkbox"/> No                                                    | <input type="checkbox"/> Yes <input checked="" type="checkbox"/> No                                                               |  |
|                                                                 | Does the pit contain two feet of free board? (check the water levels)                             | <input checked="" type="checkbox"/> Yes <input type="checkbox"/> No                                         | <input checked="" type="checkbox"/> Yes <input type="checkbox"/> No                                         | <input checked="" type="checkbox"/> Yes <input type="checkbox"/> No                                         | <input checked="" type="checkbox"/> Yes <input type="checkbox"/> No                                         | <input checked="" type="checkbox"/> Yes <input type="checkbox"/> No                                         | <input checked="" type="checkbox"/> Yes <input type="checkbox"/> No                                         | <input type="checkbox"/> Yes <input type="checkbox"/> No                                                    | <input type="checkbox"/> Yes <input type="checkbox"/> No                                                    | <input checked="" type="checkbox"/> Yes <input type="checkbox"/> No                                                               |  |
|                                                                 | Is there any standing water on the blow pit?                                                      | <input type="checkbox"/> Yes <input checked="" type="checkbox"/> No                                         | <input type="checkbox"/> Yes <input checked="" type="checkbox"/> No                                         | <input type="checkbox"/> Yes <input checked="" type="checkbox"/> No                                         | <input type="checkbox"/> Yes <input checked="" type="checkbox"/> No                                         | <input type="checkbox"/> Yes <input checked="" type="checkbox"/> No                                         | <input type="checkbox"/> Yes <input checked="" type="checkbox"/> No                                         | <input type="checkbox"/> Yes <input type="checkbox"/> No                                                    | <input type="checkbox"/> Yes <input type="checkbox"/> No                                                    | <input checked="" type="checkbox"/> Yes <input type="checkbox"/> No                                                               |  |
|                                                                 | Are the pits free of trash and oil?                                                               | <input checked="" type="checkbox"/> Yes <input type="checkbox"/> No                                         | <input checked="" type="checkbox"/> Yes <input type="checkbox"/> No                                         | <input checked="" type="checkbox"/> Yes <input checked="" type="checkbox"/> No                              | <input checked="" type="checkbox"/> Yes <input type="checkbox"/> No                                         | <input checked="" type="checkbox"/> Yes <input type="checkbox"/> No                                         | <input checked="" type="checkbox"/> Yes <input type="checkbox"/> No                                         | <input type="checkbox"/> Yes <input type="checkbox"/> No                                                    | <input type="checkbox"/> Yes <input type="checkbox"/> No                                                    | <input checked="" type="checkbox"/> Yes <input type="checkbox"/> No                                                               |  |
|                                                                 | Are there diversion ditches around the pits for natural drainage?                                 | <input type="checkbox"/> Yes <input checked="" type="checkbox"/> No                                         | <input type="checkbox"/> Yes <input checked="" type="checkbox"/> No                                         | <input type="checkbox"/> Yes <input checked="" type="checkbox"/> No                                         | <input type="checkbox"/> Yes <input checked="" type="checkbox"/> No                                         | <input type="checkbox"/> Yes <input checked="" type="checkbox"/> No                                         | <input type="checkbox"/> Yes <input checked="" type="checkbox"/> No                                         | <input type="checkbox"/> Yes <input type="checkbox"/> No                                                    | <input type="checkbox"/> Yes <input type="checkbox"/> No                                                    | <input checked="" type="checkbox"/> Yes <input type="checkbox"/> No                                                               |  |
| Is there a Manifold on location?                                | <input checked="" type="checkbox"/> Yes <input type="checkbox"/> No                               | <input checked="" type="checkbox"/> Yes <input type="checkbox"/> No                                         | <input checked="" type="checkbox"/> Yes <input type="checkbox"/> No                                         | <input checked="" type="checkbox"/> Yes <input type="checkbox"/> No                                         | <input checked="" type="checkbox"/> Yes <input type="checkbox"/> No                                         | <input checked="" type="checkbox"/> Yes <input type="checkbox"/> No                                         | <input type="checkbox"/> Yes <input type="checkbox"/> No                                                    | <input type="checkbox"/> Yes <input type="checkbox"/> No                                                    | <input checked="" type="checkbox"/> Yes <input type="checkbox"/> No                                         |                                                                                                                                   |  |
| Is the Manifold free of leaks? Are the hoses in good condition? | <input checked="" type="checkbox"/> Yes <input type="checkbox"/> No                               | <input checked="" type="checkbox"/> Yes <input type="checkbox"/> No                                         | <input checked="" type="checkbox"/> Yes <input type="checkbox"/> No                                         | <input checked="" type="checkbox"/> Yes <input type="checkbox"/> No                                         | <input checked="" type="checkbox"/> Yes <input type="checkbox"/> No                                         | <input checked="" type="checkbox"/> Yes <input type="checkbox"/> No                                         | <input checked="" type="checkbox"/> Yes <input type="checkbox"/> No                                         | <input type="checkbox"/> Yes <input type="checkbox"/> No                                                    | <input type="checkbox"/> Yes <input type="checkbox"/> No                                                    | <input checked="" type="checkbox"/> Yes <input type="checkbox"/> No                                                               |  |
| OC                                                              | Was the OCD contacted?                                                                            | <input type="checkbox"/> Yes <input checked="" type="checkbox"/> No                                         | <input type="checkbox"/> Yes <input checked="" type="checkbox"/> No                                         | <input type="checkbox"/> Yes <input checked="" type="checkbox"/> No                                         | <input type="checkbox"/> Yes <input checked="" type="checkbox"/> No                                         | <input type="checkbox"/> Yes <input checked="" type="checkbox"/> No                                         | <input type="checkbox"/> Yes <input checked="" type="checkbox"/> No                                         | <input type="checkbox"/> Yes <input type="checkbox"/> No                                                    | <input type="checkbox"/> Yes <input type="checkbox"/> No                                                    | <input type="checkbox"/> Yes <input checked="" type="checkbox"/> No                                                               |  |
|                                                                 | PICTURE TAKEN                                                                                     | <input type="checkbox"/> Yes <input checked="" type="checkbox"/> No                                         | <input type="checkbox"/> Yes <input checked="" type="checkbox"/> No                                         | <input type="checkbox"/> Yes <input checked="" type="checkbox"/> No                                         | <input type="checkbox"/> Yes <input checked="" type="checkbox"/> No                                         | <input type="checkbox"/> Yes <input checked="" type="checkbox"/> No                                         | <input type="checkbox"/> Yes <input checked="" type="checkbox"/> No                                         | <input type="checkbox"/> Yes <input type="checkbox"/> No                                                    | <input type="checkbox"/> Yes <input type="checkbox"/> No                                                    | <input type="checkbox"/> Yes <input checked="" type="checkbox"/> No                                                               |  |
|                                                                 | COMMENTS                                                                                          | Fence Loose No Diversion Ditch                                                                              | Fence Repaired No Diversion Ditch                                                                           | Fence Loose Stains on Location No Diversion Ditch                                                           | Fence Repaired, Stains on Loc.No Diversion Ditch                                                            | Fence Loose Stains on Loc. No Diversion Ditch                                                               | Fence Loose Stains on Loc. No Diversion Ditch                                                               | Drill rig on location                                                                                       | Rig on location                                                                                             | contact flint to come blade stains                                                                                                |  |

| WELL NAME:                                                      |                                                                                                   |                                                                                                             |                                                                                                                        |                                                                                                                        |                                                                                                                        |                                                                                                                        |                                                                                                             |                                                                                                                                   |                                                                                                                                   |                                                                                                                                   |
|-----------------------------------------------------------------|---------------------------------------------------------------------------------------------------|-------------------------------------------------------------------------------------------------------------|------------------------------------------------------------------------------------------------------------------------|------------------------------------------------------------------------------------------------------------------------|------------------------------------------------------------------------------------------------------------------------|------------------------------------------------------------------------------------------------------------------------|-------------------------------------------------------------------------------------------------------------|-----------------------------------------------------------------------------------------------------------------------------------|-----------------------------------------------------------------------------------------------------------------------------------|-----------------------------------------------------------------------------------------------------------------------------------|
| San Juan 27-4 Unit 135B & 135M                                  |                                                                                                   |                                                                                                             |                                                                                                                        |                                                                                                                        |                                                                                                                        |                                                                                                                        |                                                                                                             |                                                                                                                                   |                                                                                                                                   |                                                                                                                                   |
| INSPECTOR                                                       |                                                                                                   | Fred Mtz                                                                                                    | Fred Mtz                                                                                                               | Fred Mtz                                                                                                               | Fred Mtz                                                                                                               |                                                                                                                        | EP                                                                                                          | Fred Mtz                                                                                                                          | Fred Mtz                                                                                                                          | F.MTZ                                                                                                                             |
| DATE                                                            |                                                                                                   | 11/01/11                                                                                                    | 11/22/11                                                                                                               | 12/07/11                                                                                                               | 12/14/11                                                                                                               | 12/22/11                                                                                                               | 01/04/11                                                                                                    | 01/13/11                                                                                                                          | 01/20/11                                                                                                                          | 02/27/12                                                                                                                          |
| *Please request for pit extention after 26 weeks                |                                                                                                   | Week 10                                                                                                     | Week 11                                                                                                                | Week 12                                                                                                                | Week 13                                                                                                                | Week 14                                                                                                                | Week 15                                                                                                     | Week 16                                                                                                                           | Week 17                                                                                                                           | Week 18                                                                                                                           |
| PIT STATUS                                                      |                                                                                                   | <input type="checkbox"/> Drilled<br><input type="checkbox"/> Completed<br><input type="checkbox"/> Clean-Up | <input checked="" type="checkbox"/> Drilled<br><input type="checkbox"/> Completed<br><input type="checkbox"/> Clean-Up | <input checked="" type="checkbox"/> Drilled<br><input type="checkbox"/> Completed<br><input type="checkbox"/> Clean-Up | <input checked="" type="checkbox"/> Drilled<br><input type="checkbox"/> Completed<br><input type="checkbox"/> Clean-Up | <input checked="" type="checkbox"/> Drilled<br><input type="checkbox"/> Completed<br><input type="checkbox"/> Clean-Up | <input type="checkbox"/> Drilled<br><input type="checkbox"/> Completed<br><input type="checkbox"/> Clean-Up | <input checked="" type="checkbox"/> Drilled<br><input checked="" type="checkbox"/> Completed<br><input type="checkbox"/> Clean-Up | <input checked="" type="checkbox"/> Drilled<br><input checked="" type="checkbox"/> Completed<br><input type="checkbox"/> Clean-Up | <input checked="" type="checkbox"/> Drilled<br><input checked="" type="checkbox"/> Completed<br><input type="checkbox"/> Clean-Up |
| LOCATION                                                        | Is the location marked with the proper flagging? (Const. Zone, poles, pipelines, etc.)            | <input checked="" type="checkbox"/> Yes <input type="checkbox"/> No                                         | <input checked="" type="checkbox"/> Yes <input type="checkbox"/> No                                                    | <input checked="" type="checkbox"/> Yes <input type="checkbox"/> No                                                    | <input checked="" type="checkbox"/> Yes <input type="checkbox"/> No                                                    | <input checked="" type="checkbox"/> Yes <input type="checkbox"/> No                                                    | <input checked="" type="checkbox"/> Yes <input type="checkbox"/> No                                         | <input checked="" type="checkbox"/> Yes <input type="checkbox"/> No                                                               | <input checked="" type="checkbox"/> Yes <input type="checkbox"/> No                                                               | <input checked="" type="checkbox"/> Yes <input type="checkbox"/> No                                                               |
|                                                                 | Is the temporary well sign on location and visible from access road?                              | <input checked="" type="checkbox"/> Yes <input type="checkbox"/> No                                         | <input checked="" type="checkbox"/> Yes <input type="checkbox"/> No                                                    | <input checked="" type="checkbox"/> Yes <input type="checkbox"/> No                                                    | <input checked="" type="checkbox"/> Yes <input type="checkbox"/> No                                                    | <input checked="" type="checkbox"/> Yes <input type="checkbox"/> No                                                    | <input checked="" type="checkbox"/> Yes <input type="checkbox"/> No                                         | <input checked="" type="checkbox"/> Yes <input type="checkbox"/> No                                                               | <input checked="" type="checkbox"/> Yes <input type="checkbox"/> No                                                               | <input checked="" type="checkbox"/> Yes <input type="checkbox"/> No                                                               |
| ENVIRONMENTAL COMPLIANCE                                        | Is the access road in good driving condition? (deep ruts, bladed)                                 | <input checked="" type="checkbox"/> Yes <input type="checkbox"/> No                                         | <input checked="" type="checkbox"/> Yes <input type="checkbox"/> No                                                    | <input checked="" type="checkbox"/> Yes <input type="checkbox"/> No                                                    | <input checked="" type="checkbox"/> Yes <input type="checkbox"/> No                                                    | <input checked="" type="checkbox"/> Yes <input type="checkbox"/> No                                                    | <input type="checkbox"/> Yes <input checked="" type="checkbox"/> No                                         | <input type="checkbox"/> Yes <input checked="" type="checkbox"/> No                                                               | <input type="checkbox"/> Yes <input checked="" type="checkbox"/> No                                                               | <input type="checkbox"/> Yes <input checked="" type="checkbox"/> No                                                               |
|                                                                 | Are the culverts free from debris or any object preventing flow?                                  | <input checked="" type="checkbox"/> Yes <input type="checkbox"/> No                                         | <input checked="" type="checkbox"/> Yes <input type="checkbox"/> No                                                    | <input checked="" type="checkbox"/> Yes <input type="checkbox"/> No                                                    | <input checked="" type="checkbox"/> Yes <input type="checkbox"/> No                                                    | <input checked="" type="checkbox"/> Yes <input type="checkbox"/> No                                                    | <input checked="" type="checkbox"/> Yes <input type="checkbox"/> No                                         | <input checked="" type="checkbox"/> Yes <input type="checkbox"/> No                                                               | <input checked="" type="checkbox"/> Yes <input type="checkbox"/> No                                                               | <input checked="" type="checkbox"/> Yes <input type="checkbox"/> No                                                               |
|                                                                 | Is the top of the location bladed and in good operating condition?                                | <input checked="" type="checkbox"/> Yes <input type="checkbox"/> No                                         | <input checked="" type="checkbox"/> Yes <input type="checkbox"/> No                                                    | <input checked="" type="checkbox"/> Yes <input type="checkbox"/> No                                                    | <input checked="" type="checkbox"/> Yes <input type="checkbox"/> No                                                    | <input checked="" type="checkbox"/> Yes <input type="checkbox"/> No                                                    | <input checked="" type="checkbox"/> Yes <input type="checkbox"/> No                                         | <input checked="" type="checkbox"/> Yes <input type="checkbox"/> No                                                               | <input checked="" type="checkbox"/> Yes <input type="checkbox"/> No                                                               | <input checked="" type="checkbox"/> Yes <input type="checkbox"/> No                                                               |
|                                                                 | Is the fence stock-proof? (fences tight, barbed wire, fence clips in place?)                      | <input checked="" type="checkbox"/> Yes <input type="checkbox"/> No                                         | <input checked="" type="checkbox"/> Yes <input type="checkbox"/> No                                                    | <input checked="" type="checkbox"/> Yes <input type="checkbox"/> No                                                    | <input checked="" type="checkbox"/> Yes <input type="checkbox"/> No                                                    | <input checked="" type="checkbox"/> Yes <input type="checkbox"/> No                                                    | <input type="checkbox"/> Yes <input checked="" type="checkbox"/> No                                         | <input type="checkbox"/> Yes <input checked="" type="checkbox"/> No                                                               | <input type="checkbox"/> Yes <input checked="" type="checkbox"/> No                                                               | <input type="checkbox"/> Yes <input checked="" type="checkbox"/> No                                                               |
|                                                                 | Is the pit liner in good operating condition? (no tears, up-rooting corners, etc.)                | <input checked="" type="checkbox"/> Yes <input type="checkbox"/> No                                         | <input checked="" type="checkbox"/> Yes <input type="checkbox"/> No                                                    | <input checked="" type="checkbox"/> Yes <input type="checkbox"/> No                                                    | <input checked="" type="checkbox"/> Yes <input type="checkbox"/> No                                                    | <input checked="" type="checkbox"/> Yes <input type="checkbox"/> No                                                    | <input checked="" type="checkbox"/> Yes <input type="checkbox"/> No                                         | <input checked="" type="checkbox"/> Yes <input type="checkbox"/> No                                                               | <input checked="" type="checkbox"/> Yes <input type="checkbox"/> No                                                               | <input checked="" type="checkbox"/> Yes <input type="checkbox"/> No                                                               |
|                                                                 | Is the the location free from trash, oil stains and other materials? (cables, pipe threads, etc.) | <input checked="" type="checkbox"/> Yes <input type="checkbox"/> No                                         | <input checked="" type="checkbox"/> Yes <input type="checkbox"/> No                                                    | <input checked="" type="checkbox"/> Yes <input type="checkbox"/> No                                                    | <input checked="" type="checkbox"/> Yes <input type="checkbox"/> No                                                    | <input checked="" type="checkbox"/> Yes <input type="checkbox"/> No                                                    | <input checked="" type="checkbox"/> Yes <input type="checkbox"/> No                                         | <input checked="" type="checkbox"/> Yes <input type="checkbox"/> No                                                               | <input checked="" type="checkbox"/> Yes <input type="checkbox"/> No                                                               | <input checked="" type="checkbox"/> Yes <input type="checkbox"/> No                                                               |
|                                                                 | Does the pit contain two feet of free board? (check the water levels)                             | <input checked="" type="checkbox"/> Yes <input type="checkbox"/> No                                         | <input checked="" type="checkbox"/> Yes <input type="checkbox"/> No                                                    | <input checked="" type="checkbox"/> Yes <input type="checkbox"/> No                                                    | <input checked="" type="checkbox"/> Yes <input type="checkbox"/> No                                                    | <input checked="" type="checkbox"/> Yes <input type="checkbox"/> No                                                    | <input checked="" type="checkbox"/> Yes <input type="checkbox"/> No                                         | <input checked="" type="checkbox"/> Yes <input type="checkbox"/> No                                                               | <input checked="" type="checkbox"/> Yes <input type="checkbox"/> No                                                               | <input checked="" type="checkbox"/> Yes <input type="checkbox"/> No                                                               |
|                                                                 | Is there any standing water on the blow pit?                                                      | <input checked="" type="checkbox"/> Yes <input type="checkbox"/> No                                         | <input checked="" type="checkbox"/> Yes <input type="checkbox"/> No                                                    | <input checked="" type="checkbox"/> Yes <input type="checkbox"/> No                                                    | <input checked="" type="checkbox"/> Yes <input type="checkbox"/> No                                                    | <input checked="" type="checkbox"/> Yes <input type="checkbox"/> No                                                    | <input type="checkbox"/> Yes <input checked="" type="checkbox"/> No                                         | <input checked="" type="checkbox"/> Yes <input type="checkbox"/> No                                                               | <input checked="" type="checkbox"/> Yes <input type="checkbox"/> No                                                               | <input checked="" type="checkbox"/> Yes <input type="checkbox"/> No                                                               |
|                                                                 | Are the pits free of trash and oil?                                                               | <input checked="" type="checkbox"/> Yes <input type="checkbox"/> No                                         | <input checked="" type="checkbox"/> Yes <input type="checkbox"/> No                                                    | <input checked="" type="checkbox"/> Yes <input type="checkbox"/> No                                                    | <input checked="" type="checkbox"/> Yes <input type="checkbox"/> No                                                    | <input checked="" type="checkbox"/> Yes <input type="checkbox"/> No                                                    | <input type="checkbox"/> Yes <input checked="" type="checkbox"/> No                                         | <input checked="" type="checkbox"/> Yes <input type="checkbox"/> No                                                               | <input checked="" type="checkbox"/> Yes <input type="checkbox"/> No                                                               | <input checked="" type="checkbox"/> Yes <input type="checkbox"/> No                                                               |
|                                                                 | Are there diversion ditches around the pits for natural drainage?                                 | <input checked="" type="checkbox"/> Yes <input type="checkbox"/> No                                         | <input checked="" type="checkbox"/> Yes <input type="checkbox"/> No                                                    | <input checked="" type="checkbox"/> Yes <input type="checkbox"/> No                                                    | <input checked="" type="checkbox"/> Yes <input type="checkbox"/> No                                                    | <input checked="" type="checkbox"/> Yes <input type="checkbox"/> No                                                    | <input checked="" type="checkbox"/> Yes <input type="checkbox"/> No                                         | <input checked="" type="checkbox"/> Yes <input type="checkbox"/> No                                                               | <input checked="" type="checkbox"/> Yes <input type="checkbox"/> No                                                               | <input checked="" type="checkbox"/> Yes <input type="checkbox"/> No                                                               |
| Is there a Manifold on location?                                | <input checked="" type="checkbox"/> Yes <input type="checkbox"/> No                               | <input checked="" type="checkbox"/> Yes <input type="checkbox"/> No                                         | <input checked="" type="checkbox"/> Yes <input type="checkbox"/> No                                                    | <input checked="" type="checkbox"/> Yes <input type="checkbox"/> No                                                    | <input checked="" type="checkbox"/> Yes <input type="checkbox"/> No                                                    | <input checked="" type="checkbox"/> Yes <input type="checkbox"/> No                                                    | <input checked="" type="checkbox"/> Yes <input type="checkbox"/> No                                         | <input checked="" type="checkbox"/> Yes <input type="checkbox"/> No                                                               | <input checked="" type="checkbox"/> Yes <input type="checkbox"/> No                                                               |                                                                                                                                   |
| Is the Manifold free of leaks? Are the hoses in good condition? | <input checked="" type="checkbox"/> Yes <input type="checkbox"/> No                               | <input checked="" type="checkbox"/> Yes <input type="checkbox"/> No                                         | <input checked="" type="checkbox"/> Yes <input type="checkbox"/> No                                                    | <input checked="" type="checkbox"/> Yes <input type="checkbox"/> No                                                    | <input checked="" type="checkbox"/> Yes <input type="checkbox"/> No                                                    | <input checked="" type="checkbox"/> Yes <input type="checkbox"/> No                                                    | <input checked="" type="checkbox"/> Yes <input type="checkbox"/> No                                         | <input checked="" type="checkbox"/> Yes <input type="checkbox"/> No                                                               | <input checked="" type="checkbox"/> Yes <input type="checkbox"/> No                                                               |                                                                                                                                   |
| Was the OCD contacted?                                          | <input type="checkbox"/> Yes <input checked="" type="checkbox"/> No                               | <input type="checkbox"/> Yes <input checked="" type="checkbox"/> No                                         | <input type="checkbox"/> Yes <input checked="" type="checkbox"/> No                                                    | <input type="checkbox"/> Yes <input checked="" type="checkbox"/> No                                                    | <input type="checkbox"/> Yes <input checked="" type="checkbox"/> No                                                    | <input type="checkbox"/> Yes <input checked="" type="checkbox"/> No                                                    | <input type="checkbox"/> Yes <input checked="" type="checkbox"/> No                                         | <input type="checkbox"/> Yes <input checked="" type="checkbox"/> No                                                               | <input type="checkbox"/> Yes <input checked="" type="checkbox"/> No                                                               | <input type="checkbox"/> Yes <input checked="" type="checkbox"/> No                                                               |
| PICTURE TAKEN                                                   | <input type="checkbox"/> Yes <input checked="" type="checkbox"/> No                               | <input type="checkbox"/> Yes <input checked="" type="checkbox"/> No                                         | <input type="checkbox"/> Yes <input checked="" type="checkbox"/> No                                                    | <input type="checkbox"/> Yes <input checked="" type="checkbox"/> No                                                    | <input type="checkbox"/> Yes <input checked="" type="checkbox"/> No                                                    | <input type="checkbox"/> Yes <input checked="" type="checkbox"/> No                                                    | <input type="checkbox"/> Yes <input checked="" type="checkbox"/> No                                         | <input type="checkbox"/> Yes <input checked="" type="checkbox"/> No                                                               | <input type="checkbox"/> Yes <input checked="" type="checkbox"/> No                                                               | <input type="checkbox"/> Yes <input checked="" type="checkbox"/> No                                                               |
| COMMENTS                                                        |                                                                                                   |                                                                                                             | No repairs                                                                                                             | All Good                                                                                                               | All Good                                                                                                               | Road rough<br>Fence loose                                                                                              | fence loose road<br>rough                                                                                   | Road and<br>location need<br>bladed.                                                                                              | Road and loc.<br>Need bladed                                                                                                      |                                                                                                                                   |



| WELL NAME:                                                      |                                                                                                   |                                                                                                                                   |                                                                                                                                   |                                                                                                                                   |                                                                                                                                   |                                                                                                                                   |                                                                                                                                   |                                                                                                                                   |                                                                                                             |                                                                                                             |
|-----------------------------------------------------------------|---------------------------------------------------------------------------------------------------|-----------------------------------------------------------------------------------------------------------------------------------|-----------------------------------------------------------------------------------------------------------------------------------|-----------------------------------------------------------------------------------------------------------------------------------|-----------------------------------------------------------------------------------------------------------------------------------|-----------------------------------------------------------------------------------------------------------------------------------|-----------------------------------------------------------------------------------------------------------------------------------|-----------------------------------------------------------------------------------------------------------------------------------|-------------------------------------------------------------------------------------------------------------|-------------------------------------------------------------------------------------------------------------|
| San Juan 27-4 Unit 135B & 135M                                  |                                                                                                   |                                                                                                                                   |                                                                                                                                   |                                                                                                                                   |                                                                                                                                   |                                                                                                                                   |                                                                                                                                   |                                                                                                                                   |                                                                                                             |                                                                                                             |
| INSPECTOR                                                       |                                                                                                   | F.Mtz                                                                                                                             | Fred Mtz                                                                                                                          | Fred Mtz                                                                                                                          | Fred Mtz                                                                                                                          | Fred Mtz                                                                                                                          | Fred Mtz                                                                                                                          | Fred Mtz                                                                                                                          | Fred Mtz                                                                                                    | Fred Mtz                                                                                                    |
| DATE                                                            |                                                                                                   | 02/03/12                                                                                                                          | 02/24/12                                                                                                                          | 03/08/12                                                                                                                          | 03/16/12                                                                                                                          | 03/30/12                                                                                                                          | 04/20/12                                                                                                                          | 05/25/12                                                                                                                          | 06/01/12                                                                                                    | 06/08/12                                                                                                    |
| *Please request for pit extention after 26 weeks                |                                                                                                   | Week 19                                                                                                                           | Week 20                                                                                                                           | Week 21                                                                                                                           | Week 22                                                                                                                           | Week 23                                                                                                                           | Week 24                                                                                                                           | Week 25                                                                                                                           | *Week 26*                                                                                                   | Week 27                                                                                                     |
| PIT STATUS                                                      |                                                                                                   | <input checked="" type="checkbox"/> Drilled<br><input checked="" type="checkbox"/> Completed<br><input type="checkbox"/> Clean-Up | <input checked="" type="checkbox"/> Drilled<br><input checked="" type="checkbox"/> Completed<br><input type="checkbox"/> Clean-Up | <input checked="" type="checkbox"/> Drilled<br><input checked="" type="checkbox"/> Completed<br><input type="checkbox"/> Clean-Up | <input checked="" type="checkbox"/> Drilled<br><input checked="" type="checkbox"/> Completed<br><input type="checkbox"/> Clean-Up | <input checked="" type="checkbox"/> Drilled<br><input checked="" type="checkbox"/> Completed<br><input type="checkbox"/> Clean-Up | <input checked="" type="checkbox"/> Drilled<br><input checked="" type="checkbox"/> Completed<br><input type="checkbox"/> Clean-Up | <input checked="" type="checkbox"/> Drilled<br><input checked="" type="checkbox"/> Completed<br><input type="checkbox"/> Clean-Up | <input type="checkbox"/> Drilled<br><input type="checkbox"/> Completed<br><input type="checkbox"/> Clean-Up | <input type="checkbox"/> Drilled<br><input type="checkbox"/> Completed<br><input type="checkbox"/> Clean-Up |
| LOCATION                                                        | Is the location marked with the proper flagging? (Const. Zone, poles, pipelines, etc.)            | <input checked="" type="checkbox"/> Yes <input type="checkbox"/> No                                                               | <input checked="" type="checkbox"/> Yes <input type="checkbox"/> No                                                               | <input checked="" type="checkbox"/> Yes <input type="checkbox"/> No                                                               | <input checked="" type="checkbox"/> Yes <input type="checkbox"/> No                                                               | <input checked="" type="checkbox"/> Yes <input type="checkbox"/> No                                                               | <input checked="" type="checkbox"/> Yes <input type="checkbox"/> No                                                               | <input checked="" type="checkbox"/> Yes <input type="checkbox"/> No                                                               | <input type="checkbox"/> Yes <input type="checkbox"/> No                                                    | <input type="checkbox"/> Yes <input type="checkbox"/> No                                                    |
|                                                                 | Is the temporary well sign on location and visible from access road?                              | <input checked="" type="checkbox"/> Yes <input type="checkbox"/> No                                                               | <input checked="" type="checkbox"/> Yes <input type="checkbox"/> No                                                               | <input checked="" type="checkbox"/> Yes <input type="checkbox"/> No                                                               | <input checked="" type="checkbox"/> Yes <input type="checkbox"/> No                                                               | <input checked="" type="checkbox"/> Yes <input type="checkbox"/> No                                                               | <input checked="" type="checkbox"/> Yes <input type="checkbox"/> No                                                               | <input checked="" type="checkbox"/> Yes <input type="checkbox"/> No                                                               | <input type="checkbox"/> Yes <input type="checkbox"/> No                                                    | <input type="checkbox"/> Yes <input type="checkbox"/> No                                                    |
| ENVIRONMENTAL COMPLIANCE                                        | Is the access road in good driving condition? (deep ruts, bladed)                                 | <input type="checkbox"/> Yes <input checked="" type="checkbox"/> No                                                               | <input type="checkbox"/> Yes <input checked="" type="checkbox"/> No                                                               | <input type="checkbox"/> Yes <input checked="" type="checkbox"/> No                                                               | <input checked="" type="checkbox"/> Yes <input type="checkbox"/> No                                                               | <input checked="" type="checkbox"/> Yes <input type="checkbox"/> No                                                               | <input checked="" type="checkbox"/> Yes <input type="checkbox"/> No                                                               | <input checked="" type="checkbox"/> Yes <input type="checkbox"/> No                                                               | <input type="checkbox"/> Yes <input type="checkbox"/> No                                                    | <input type="checkbox"/> Yes <input type="checkbox"/> No                                                    |
|                                                                 | Are the culverts free from debris or any object preventing flow?                                  | <input checked="" type="checkbox"/> Yes <input type="checkbox"/> No                                                               | <input checked="" type="checkbox"/> Yes <input type="checkbox"/> No                                                               | <input checked="" type="checkbox"/> Yes <input type="checkbox"/> No                                                               | <input checked="" type="checkbox"/> Yes <input type="checkbox"/> No                                                               | <input checked="" type="checkbox"/> Yes <input type="checkbox"/> No                                                               | <input checked="" type="checkbox"/> Yes <input type="checkbox"/> No                                                               | <input checked="" type="checkbox"/> Yes <input type="checkbox"/> No                                                               | <input type="checkbox"/> Yes <input type="checkbox"/> No                                                    | <input type="checkbox"/> Yes <input type="checkbox"/> No                                                    |
|                                                                 | Is the top of the location bladed and in good operating condition?                                | <input checked="" type="checkbox"/> Yes <input type="checkbox"/> No                                                               | <input checked="" type="checkbox"/> Yes <input type="checkbox"/> No                                                               | <input type="checkbox"/> Yes <input checked="" type="checkbox"/> No                                                               | <input checked="" type="checkbox"/> Yes <input type="checkbox"/> No                                                               | <input checked="" type="checkbox"/> Yes <input type="checkbox"/> No                                                               | <input checked="" type="checkbox"/> Yes <input type="checkbox"/> No                                                               | <input checked="" type="checkbox"/> Yes <input type="checkbox"/> No                                                               | <input type="checkbox"/> Yes <input type="checkbox"/> No                                                    | <input type="checkbox"/> Yes <input type="checkbox"/> No                                                    |
|                                                                 | Is the fence stock-proof? (fences tight, barbed wire, fence clips in place?)                      | <input checked="" type="checkbox"/> Yes <input type="checkbox"/> No                                                               | <input checked="" type="checkbox"/> Yes <input type="checkbox"/> No                                                               | <input checked="" type="checkbox"/> Yes <input type="checkbox"/> No                                                               | <input checked="" type="checkbox"/> Yes <input type="checkbox"/> No                                                               | <input type="checkbox"/> Yes <input checked="" type="checkbox"/> No                                                               | <input checked="" type="checkbox"/> Yes <input type="checkbox"/> No                                                               | <input checked="" type="checkbox"/> Yes <input type="checkbox"/> No                                                               | <input type="checkbox"/> Yes <input type="checkbox"/> No                                                    | <input type="checkbox"/> Yes <input type="checkbox"/> No                                                    |
|                                                                 | Is the pit liner in good operating condition? (no tears, up-rooting corners, etc.)                | <input checked="" type="checkbox"/> Yes <input type="checkbox"/> No                                                               | <input checked="" type="checkbox"/> Yes <input type="checkbox"/> No                                                               | <input checked="" type="checkbox"/> Yes <input type="checkbox"/> No                                                               | <input checked="" type="checkbox"/> Yes <input type="checkbox"/> No                                                               | <input checked="" type="checkbox"/> Yes <input type="checkbox"/> No                                                               | <input checked="" type="checkbox"/> Yes <input type="checkbox"/> No                                                               | <input checked="" type="checkbox"/> Yes <input type="checkbox"/> No                                                               | <input type="checkbox"/> Yes <input type="checkbox"/> No                                                    | <input type="checkbox"/> Yes <input type="checkbox"/> No                                                    |
|                                                                 | Is the the location free from trash, oil stains and other materials? (cables, pipe threads, etc.) | <input checked="" type="checkbox"/> Yes <input type="checkbox"/> No                                                               | <input checked="" type="checkbox"/> Yes <input type="checkbox"/> No                                                               | <input checked="" type="checkbox"/> Yes <input type="checkbox"/> No                                                               | <input checked="" type="checkbox"/> Yes <input type="checkbox"/> No                                                               | <input checked="" type="checkbox"/> Yes <input type="checkbox"/> No                                                               | <input checked="" type="checkbox"/> Yes <input type="checkbox"/> No                                                               | <input checked="" type="checkbox"/> Yes <input type="checkbox"/> No                                                               | <input type="checkbox"/> Yes <input type="checkbox"/> No                                                    | <input type="checkbox"/> Yes <input type="checkbox"/> No                                                    |
|                                                                 | Does the pit contain two feet of free board? (check the water levels)                             | <input checked="" type="checkbox"/> Yes <input type="checkbox"/> No                                                               | <input checked="" type="checkbox"/> Yes <input type="checkbox"/> No                                                               | <input checked="" type="checkbox"/> Yes <input type="checkbox"/> No                                                               | <input checked="" type="checkbox"/> Yes <input type="checkbox"/> No                                                               | <input checked="" type="checkbox"/> Yes <input type="checkbox"/> No                                                               | <input checked="" type="checkbox"/> Yes <input type="checkbox"/> No                                                               | <input checked="" type="checkbox"/> Yes <input type="checkbox"/> No                                                               | <input type="checkbox"/> Yes <input type="checkbox"/> No                                                    | <input type="checkbox"/> Yes <input type="checkbox"/> No                                                    |
|                                                                 | Is there any standing water on the blow pit?                                                      | <input checked="" type="checkbox"/> Yes <input type="checkbox"/> No                                                               | <input checked="" type="checkbox"/> Yes <input type="checkbox"/> No                                                               | <input checked="" type="checkbox"/> Yes <input type="checkbox"/> No                                                               | <input checked="" type="checkbox"/> Yes <input type="checkbox"/> No                                                               | <input checked="" type="checkbox"/> Yes <input type="checkbox"/> No                                                               | <input type="checkbox"/> Yes <input checked="" type="checkbox"/> No                                                               | <input checked="" type="checkbox"/> Yes <input type="checkbox"/> No                                                               | <input type="checkbox"/> Yes <input type="checkbox"/> No                                                    | <input type="checkbox"/> Yes <input type="checkbox"/> No                                                    |
|                                                                 | Are the pits free of trash and oil?                                                               | <input checked="" type="checkbox"/> Yes <input type="checkbox"/> No                                                               | <input checked="" type="checkbox"/> Yes <input type="checkbox"/> No                                                               | <input checked="" type="checkbox"/> Yes <input type="checkbox"/> No                                                               | <input checked="" type="checkbox"/> Yes <input type="checkbox"/> No                                                               | <input checked="" type="checkbox"/> Yes <input type="checkbox"/> No                                                               | <input type="checkbox"/> Yes <input checked="" type="checkbox"/> No                                                               | <input checked="" type="checkbox"/> Yes <input type="checkbox"/> No                                                               | <input type="checkbox"/> Yes <input type="checkbox"/> No                                                    | <input type="checkbox"/> Yes <input type="checkbox"/> No                                                    |
|                                                                 | Are there diversion ditches around the pits for natural drainage?                                 | <input checked="" type="checkbox"/> Yes <input type="checkbox"/> No                                                               | <input checked="" type="checkbox"/> Yes <input type="checkbox"/> No                                                               | <input checked="" type="checkbox"/> Yes <input type="checkbox"/> No                                                               | <input checked="" type="checkbox"/> Yes <input type="checkbox"/> No                                                               | <input checked="" type="checkbox"/> Yes <input type="checkbox"/> No                                                               | <input checked="" type="checkbox"/> Yes <input type="checkbox"/> No                                                               | <input type="checkbox"/> Yes <input checked="" type="checkbox"/> No                                                               | <input type="checkbox"/> Yes <input type="checkbox"/> No                                                    | <input type="checkbox"/> Yes <input type="checkbox"/> No                                                    |
| Is there a Manifold on location?                                | <input checked="" type="checkbox"/> Yes <input type="checkbox"/> No                               | <input checked="" type="checkbox"/> Yes <input type="checkbox"/> No                                                               | <input checked="" type="checkbox"/> Yes <input type="checkbox"/> No                                                               | <input checked="" type="checkbox"/> Yes <input type="checkbox"/> No                                                               | <input checked="" type="checkbox"/> Yes <input type="checkbox"/> No                                                               | <input checked="" type="checkbox"/> Yes <input type="checkbox"/> No                                                               | <input checked="" type="checkbox"/> Yes <input type="checkbox"/> No                                                               | <input type="checkbox"/> Yes <input type="checkbox"/> No                                                                          | <input type="checkbox"/> Yes <input type="checkbox"/> No                                                    |                                                                                                             |
| Is the Manifold free of leaks? Are the hoses in good condition? | <input checked="" type="checkbox"/> Yes <input type="checkbox"/> No                               | <input checked="" type="checkbox"/> Yes <input type="checkbox"/> No                                                               | <input checked="" type="checkbox"/> Yes <input type="checkbox"/> No                                                               | <input checked="" type="checkbox"/> Yes <input type="checkbox"/> No                                                               | <input checked="" type="checkbox"/> Yes <input type="checkbox"/> No                                                               | <input checked="" type="checkbox"/> Yes <input type="checkbox"/> No                                                               | <input checked="" type="checkbox"/> Yes <input type="checkbox"/> No                                                               | <input type="checkbox"/> Yes <input type="checkbox"/> No                                                                          | <input type="checkbox"/> Yes <input type="checkbox"/> No                                                    |                                                                                                             |
| Was the OCD contacted?                                          | <input type="checkbox"/> Yes <input checked="" type="checkbox"/> No                               | <input type="checkbox"/> Yes <input checked="" type="checkbox"/> No                                                               | <input type="checkbox"/> Yes <input checked="" type="checkbox"/> No                                                               | <input type="checkbox"/> Yes <input checked="" type="checkbox"/> No                                                               | <input type="checkbox"/> Yes <input checked="" type="checkbox"/> No                                                               | <input type="checkbox"/> Yes <input checked="" type="checkbox"/> No                                                               | <input type="checkbox"/> Yes <input checked="" type="checkbox"/> No                                                               | <input type="checkbox"/> Yes <input checked="" type="checkbox"/> No                                                               | <input type="checkbox"/> Yes <input type="checkbox"/> No                                                    | <input type="checkbox"/> Yes <input type="checkbox"/> No                                                    |
| PICTURE TAKEN                                                   | <input type="checkbox"/> Yes <input checked="" type="checkbox"/> No                               | <input type="checkbox"/> Yes <input checked="" type="checkbox"/> No                                                               | <input type="checkbox"/> Yes <input checked="" type="checkbox"/> No                                                               | <input type="checkbox"/> Yes <input checked="" type="checkbox"/> No                                                               | <input type="checkbox"/> Yes <input checked="" type="checkbox"/> No                                                               | <input type="checkbox"/> Yes <input checked="" type="checkbox"/> No                                                               | <input type="checkbox"/> Yes <input checked="" type="checkbox"/> No                                                               | <input type="checkbox"/> Yes <input checked="" type="checkbox"/> No                                                               | <input type="checkbox"/> Yes <input type="checkbox"/> No                                                    | <input type="checkbox"/> Yes <input type="checkbox"/> No                                                    |
| COMMENTS                                                        | Fence loose roads rutted                                                                          | road and location bladed fence is loose                                                                                           | Road and location need bladed.                                                                                                    | No repairs.                                                                                                                       | fence is loose                                                                                                                    | debris in pit tighten up fence all the way around                                                                                 | Location has stains fence loose debris in pit.                                                                                    | rig on location                                                                                                                   | Rig on location.                                                                                            |                                                                                                             |

| WELL NAME:                                                      |                                                                                                   |                                                                                                                                   |                                                                                                                        |                                                                                                             |                                                                                                             |                                                                                                             |                                                                                                             |                                                                                                             |                                                                                                             |                                                                                                             |
|-----------------------------------------------------------------|---------------------------------------------------------------------------------------------------|-----------------------------------------------------------------------------------------------------------------------------------|------------------------------------------------------------------------------------------------------------------------|-------------------------------------------------------------------------------------------------------------|-------------------------------------------------------------------------------------------------------------|-------------------------------------------------------------------------------------------------------------|-------------------------------------------------------------------------------------------------------------|-------------------------------------------------------------------------------------------------------------|-------------------------------------------------------------------------------------------------------------|-------------------------------------------------------------------------------------------------------------|
| San Juan 27-4 Unit 135B & 135M                                  |                                                                                                   |                                                                                                                                   |                                                                                                                        |                                                                                                             |                                                                                                             |                                                                                                             |                                                                                                             |                                                                                                             |                                                                                                             |                                                                                                             |
| INSPECTOR                                                       |                                                                                                   | Fred Mtz                                                                                                                          | Fred Mtz                                                                                                               | Fred Mtz                                                                                                    |                                                                                                             |                                                                                                             |                                                                                                             |                                                                                                             |                                                                                                             |                                                                                                             |
| DATE                                                            |                                                                                                   | 07/13/12                                                                                                                          | 07/20/12                                                                                                               | 07/27/12                                                                                                    |                                                                                                             |                                                                                                             |                                                                                                             |                                                                                                             |                                                                                                             |                                                                                                             |
| *Please request for pit extention after 26 weeks                |                                                                                                   | Week 28                                                                                                                           | Week 29                                                                                                                | Week 30                                                                                                     | Week 31                                                                                                     | Week 32                                                                                                     | Week 33                                                                                                     | Week 34                                                                                                     | Week 35                                                                                                     |                                                                                                             |
| PIT STATUS                                                      |                                                                                                   | <input checked="" type="checkbox"/> Drilled<br><input checked="" type="checkbox"/> Completed<br><input type="checkbox"/> Clean-Up | <input checked="" type="checkbox"/> Drilled<br><input type="checkbox"/> Completed<br><input type="checkbox"/> Clean-Up | <input type="checkbox"/> Drilled<br><input type="checkbox"/> Completed<br><input type="checkbox"/> Clean-Up | <input type="checkbox"/> Drilled<br><input type="checkbox"/> Completed<br><input type="checkbox"/> Clean-Up | <input type="checkbox"/> Drilled<br><input type="checkbox"/> Completed<br><input type="checkbox"/> Clean-Up | <input type="checkbox"/> Drilled<br><input type="checkbox"/> Completed<br><input type="checkbox"/> Clean-Up | <input type="checkbox"/> Drilled<br><input type="checkbox"/> Completed<br><input type="checkbox"/> Clean-Up | <input type="checkbox"/> Drilled<br><input type="checkbox"/> Completed<br><input type="checkbox"/> Clean-Up | <input type="checkbox"/> Drilled<br><input type="checkbox"/> Completed<br><input type="checkbox"/> Clean-Up |
| LOCATION                                                        | Is the location marked with the proper flagging? (Const. Zone, poles, pipelines, etc.)            | <input checked="" type="checkbox"/> Yes <input type="checkbox"/> No                                                               | <input checked="" type="checkbox"/> Yes <input type="checkbox"/> No                                                    | <input type="checkbox"/> Yes <input type="checkbox"/> No                                                    | <input type="checkbox"/> Yes <input type="checkbox"/> No                                                    | <input type="checkbox"/> Yes <input type="checkbox"/> No                                                    | <input type="checkbox"/> Yes <input type="checkbox"/> No                                                    | <input type="checkbox"/> Yes <input type="checkbox"/> No                                                    | <input type="checkbox"/> Yes <input type="checkbox"/> No                                                    | <input type="checkbox"/> Yes <input type="checkbox"/> No                                                    |
|                                                                 | Is the temporary well sign on location and visible from access road?                              | <input checked="" type="checkbox"/> Yes <input type="checkbox"/> No                                                               | <input checked="" type="checkbox"/> Yes <input type="checkbox"/> No                                                    | <input type="checkbox"/> Yes <input type="checkbox"/> No                                                    | <input type="checkbox"/> Yes <input type="checkbox"/> No                                                    | <input type="checkbox"/> Yes <input type="checkbox"/> No                                                    | <input type="checkbox"/> Yes <input type="checkbox"/> No                                                    | <input type="checkbox"/> Yes <input type="checkbox"/> No                                                    | <input type="checkbox"/> Yes <input type="checkbox"/> No                                                    | <input type="checkbox"/> Yes <input type="checkbox"/> No                                                    |
| ENVIRONMENTAL COMPLIANCE                                        | Is the access road in good driving condition? (deep ruts, bladed)                                 | <input checked="" type="checkbox"/> Yes <input type="checkbox"/> No                                                               | <input checked="" type="checkbox"/> Yes <input type="checkbox"/> No                                                    | <input type="checkbox"/> Yes <input type="checkbox"/> No                                                    | <input type="checkbox"/> Yes <input type="checkbox"/> No                                                    | <input type="checkbox"/> Yes <input type="checkbox"/> No                                                    | <input type="checkbox"/> Yes <input type="checkbox"/> No                                                    | <input type="checkbox"/> Yes <input type="checkbox"/> No                                                    | <input type="checkbox"/> Yes <input type="checkbox"/> No                                                    | <input type="checkbox"/> Yes <input type="checkbox"/> No                                                    |
|                                                                 | Are the culverts free from debris or any object preventing flow?                                  | <input checked="" type="checkbox"/> Yes <input type="checkbox"/> No                                                               | <input checked="" type="checkbox"/> Yes <input type="checkbox"/> No                                                    | <input type="checkbox"/> Yes <input type="checkbox"/> No                                                    | <input type="checkbox"/> Yes <input type="checkbox"/> No                                                    | <input type="checkbox"/> Yes <input type="checkbox"/> No                                                    | <input type="checkbox"/> Yes <input type="checkbox"/> No                                                    | <input type="checkbox"/> Yes <input type="checkbox"/> No                                                    | <input type="checkbox"/> Yes <input type="checkbox"/> No                                                    | <input type="checkbox"/> Yes <input type="checkbox"/> No                                                    |
|                                                                 | Is the top of the location bladed and in good operating condition?                                | <input checked="" type="checkbox"/> Yes <input type="checkbox"/> No                                                               | <input checked="" type="checkbox"/> Yes <input type="checkbox"/> No                                                    | <input type="checkbox"/> Yes <input type="checkbox"/> No                                                    | <input type="checkbox"/> Yes <input type="checkbox"/> No                                                    | <input type="checkbox"/> Yes <input type="checkbox"/> No                                                    | <input type="checkbox"/> Yes <input type="checkbox"/> No                                                    | <input type="checkbox"/> Yes <input type="checkbox"/> No                                                    | <input type="checkbox"/> Yes <input type="checkbox"/> No                                                    | <input type="checkbox"/> Yes <input type="checkbox"/> No                                                    |
|                                                                 | Is the fence stock-proof? (fences tight, barbed wire, fence clips in place?)                      | <input checked="" type="checkbox"/> Yes <input type="checkbox"/> No                                                               | <input checked="" type="checkbox"/> Yes <input type="checkbox"/> No                                                    | <input type="checkbox"/> Yes <input type="checkbox"/> No                                                    | <input type="checkbox"/> Yes <input type="checkbox"/> No                                                    | <input type="checkbox"/> Yes <input type="checkbox"/> No                                                    | <input type="checkbox"/> Yes <input type="checkbox"/> No                                                    | <input type="checkbox"/> Yes <input type="checkbox"/> No                                                    | <input type="checkbox"/> Yes <input type="checkbox"/> No                                                    | <input type="checkbox"/> Yes <input type="checkbox"/> No                                                    |
|                                                                 | Is the pit liner in good operating condition? (no tears, up-rooting corners, etc.)                | <input checked="" type="checkbox"/> Yes <input type="checkbox"/> No                                                               | <input checked="" type="checkbox"/> Yes <input type="checkbox"/> No                                                    | <input type="checkbox"/> Yes <input type="checkbox"/> No                                                    | <input type="checkbox"/> Yes <input type="checkbox"/> No                                                    | <input type="checkbox"/> Yes <input type="checkbox"/> No                                                    | <input type="checkbox"/> Yes <input type="checkbox"/> No                                                    | <input type="checkbox"/> Yes <input type="checkbox"/> No                                                    | <input type="checkbox"/> Yes <input type="checkbox"/> No                                                    | <input type="checkbox"/> Yes <input type="checkbox"/> No                                                    |
|                                                                 | Is the the location free from trash, oil stains and other materials? (cables, pipe threads, etc.) | <input checked="" type="checkbox"/> Yes <input type="checkbox"/> No                                                               | <input checked="" type="checkbox"/> Yes <input type="checkbox"/> No                                                    | <input type="checkbox"/> Yes <input type="checkbox"/> No                                                    | <input type="checkbox"/> Yes <input type="checkbox"/> No                                                    | <input type="checkbox"/> Yes <input type="checkbox"/> No                                                    | <input type="checkbox"/> Yes <input type="checkbox"/> No                                                    | <input type="checkbox"/> Yes <input type="checkbox"/> No                                                    | <input type="checkbox"/> Yes <input type="checkbox"/> No                                                    | <input type="checkbox"/> Yes <input type="checkbox"/> No                                                    |
|                                                                 | Does the pit contain two feet of free board? (check the water levels)                             | <input checked="" type="checkbox"/> Yes <input type="checkbox"/> No                                                               | <input checked="" type="checkbox"/> Yes <input type="checkbox"/> No                                                    | <input type="checkbox"/> Yes <input type="checkbox"/> No                                                    | <input type="checkbox"/> Yes <input type="checkbox"/> No                                                    | <input type="checkbox"/> Yes <input type="checkbox"/> No                                                    | <input type="checkbox"/> Yes <input type="checkbox"/> No                                                    | <input type="checkbox"/> Yes <input type="checkbox"/> No                                                    | <input type="checkbox"/> Yes <input type="checkbox"/> No                                                    | <input type="checkbox"/> Yes <input type="checkbox"/> No                                                    |
|                                                                 | Is there any standing water on the blow pit?                                                      | <input checked="" type="checkbox"/> Yes <input type="checkbox"/> No                                                               | <input checked="" type="checkbox"/> Yes <input type="checkbox"/> No                                                    | <input type="checkbox"/> Yes <input type="checkbox"/> No                                                    | <input type="checkbox"/> Yes <input type="checkbox"/> No                                                    | <input type="checkbox"/> Yes <input type="checkbox"/> No                                                    | <input type="checkbox"/> Yes <input type="checkbox"/> No                                                    | <input type="checkbox"/> Yes <input type="checkbox"/> No                                                    | <input type="checkbox"/> Yes <input type="checkbox"/> No                                                    | <input type="checkbox"/> Yes <input type="checkbox"/> No                                                    |
|                                                                 | Are the pits free of trash and oil?                                                               | <input checked="" type="checkbox"/> Yes <input type="checkbox"/> No                                                               | <input checked="" type="checkbox"/> Yes <input type="checkbox"/> No                                                    | <input type="checkbox"/> Yes <input type="checkbox"/> No                                                    | <input type="checkbox"/> Yes <input type="checkbox"/> No                                                    | <input type="checkbox"/> Yes <input type="checkbox"/> No                                                    | <input type="checkbox"/> Yes <input type="checkbox"/> No                                                    | <input type="checkbox"/> Yes <input type="checkbox"/> No                                                    | <input type="checkbox"/> Yes <input type="checkbox"/> No                                                    | <input type="checkbox"/> Yes <input type="checkbox"/> No                                                    |
|                                                                 | Are there diversion ditches around the pits for natural drainage?                                 | <input type="checkbox"/> Yes <input checked="" type="checkbox"/> No                                                               | <input type="checkbox"/> Yes <input checked="" type="checkbox"/> No                                                    | <input type="checkbox"/> Yes <input type="checkbox"/> No                                                    | <input type="checkbox"/> Yes <input type="checkbox"/> No                                                    | <input type="checkbox"/> Yes <input type="checkbox"/> No                                                    | <input type="checkbox"/> Yes <input type="checkbox"/> No                                                    | <input type="checkbox"/> Yes <input type="checkbox"/> No                                                    | <input type="checkbox"/> Yes <input type="checkbox"/> No                                                    | <input type="checkbox"/> Yes <input type="checkbox"/> No                                                    |
| Is there a Manifold on location?                                | <input checked="" type="checkbox"/> Yes <input type="checkbox"/> No                               | <input checked="" type="checkbox"/> Yes <input type="checkbox"/> No                                                               | <input type="checkbox"/> Yes <input type="checkbox"/> No                                                               | <input type="checkbox"/> Yes <input type="checkbox"/> No                                                    | <input type="checkbox"/> Yes <input type="checkbox"/> No                                                    | <input type="checkbox"/> Yes <input type="checkbox"/> No                                                    | <input type="checkbox"/> Yes <input type="checkbox"/> No                                                    | <input type="checkbox"/> Yes <input type="checkbox"/> No                                                    | <input type="checkbox"/> Yes <input type="checkbox"/> No                                                    |                                                                                                             |
| Is the Manifold free of leaks? Are the hoses in good condition? | <input checked="" type="checkbox"/> Yes <input type="checkbox"/> No                               | <input checked="" type="checkbox"/> Yes <input type="checkbox"/> No                                                               | <input type="checkbox"/> Yes <input type="checkbox"/> No                                                               | <input type="checkbox"/> Yes <input type="checkbox"/> No                                                    | <input type="checkbox"/> Yes <input type="checkbox"/> No                                                    | <input type="checkbox"/> Yes <input type="checkbox"/> No                                                    | <input type="checkbox"/> Yes <input type="checkbox"/> No                                                    | <input type="checkbox"/> Yes <input type="checkbox"/> No                                                    | <input type="checkbox"/> Yes <input type="checkbox"/> No                                                    |                                                                                                             |
| OC                                                              | Was the OCD contacted?                                                                            | <input type="checkbox"/> Yes <input checked="" type="checkbox"/> No                                                               | <input type="checkbox"/> Yes <input checked="" type="checkbox"/> No                                                    | <input type="checkbox"/> Yes <input type="checkbox"/> No                                                    | <input type="checkbox"/> Yes <input type="checkbox"/> No                                                    | <input type="checkbox"/> Yes <input type="checkbox"/> No                                                    | <input type="checkbox"/> Yes <input type="checkbox"/> No                                                    | <input type="checkbox"/> Yes <input type="checkbox"/> No                                                    | <input type="checkbox"/> Yes <input type="checkbox"/> No                                                    | <input type="checkbox"/> Yes <input type="checkbox"/> No                                                    |
|                                                                 | PICTURE TAKEN                                                                                     | <input type="checkbox"/> Yes <input checked="" type="checkbox"/> No                                                               | <input type="checkbox"/> Yes <input checked="" type="checkbox"/> No                                                    | <input type="checkbox"/> Yes <input type="checkbox"/> No                                                    | <input type="checkbox"/> Yes <input type="checkbox"/> No                                                    | <input type="checkbox"/> Yes <input type="checkbox"/> No                                                    | <input type="checkbox"/> Yes <input type="checkbox"/> No                                                    | <input type="checkbox"/> Yes <input type="checkbox"/> No                                                    | <input type="checkbox"/> Yes <input type="checkbox"/> No                                                    | <input type="checkbox"/> Yes <input type="checkbox"/> No                                                    |
|                                                                 | COMMENTS                                                                                          | Facility's set on location debri in pit.                                                                                          | Facility's set on location debri in pit.                                                                               | Pit being reclaimed.                                                                                        |                                                                                                             |                                                                                                             |                                                                                                             |                                                                                                             |                                                                                                             |                                                                                                             |