

District I
1625 N. French Drive, Hobbs, NM 88240
Phone: (575) 393-6161 Fax: (575) 393-0720

District II
811 S. First Street, Artesia, NM 88210
Phone: (575) 748-1283 Fax: (575) 748-9720

District III
1000 Rio Brazos Road, Aztec, NM 87410
Phone: (505) 334-6178 Fax: (505) 334-6170

District IV
1220 S. St. Francis Drive, Santa Fe, NM 87505
Phone: (505) 476-3460 Fax: (505) 476-3462

State of New Mexico
Energy, Minerals & Natural Resources Department

Form C-102
Revised August 1, 2011

Submit one copy to
Appropriate District Office

OIL CONSERVATION DIVISION
1220 South St. Francis Drive
Santa Fe, NM 87505

☐ AMENDED REPORT

RCVD MAY 22 '13
OIL CONS. DIV.
DIST. 3

WELL LOCATION AND ACREAGE DEDICATION PLAT

*API Number 30.045.35371	*Pool Code 97232	*Pool Name BASIN MANCOS
*Property Code	*Property Name ROSA UNIT 05	*Well Number 014H
*GRID No. 120782	*Operator Name WPX ENERGY PRODUCTION, LLC	*Elevation 6429'

¹⁰ Surface Location

UL or lot no.	Section	Township	Range	Lot Idn	Feet from the	North/South line	Feet from the	East/West line	County
C	9	31N	6W		1031	NORTH	1682	WEST	SAN JUAN

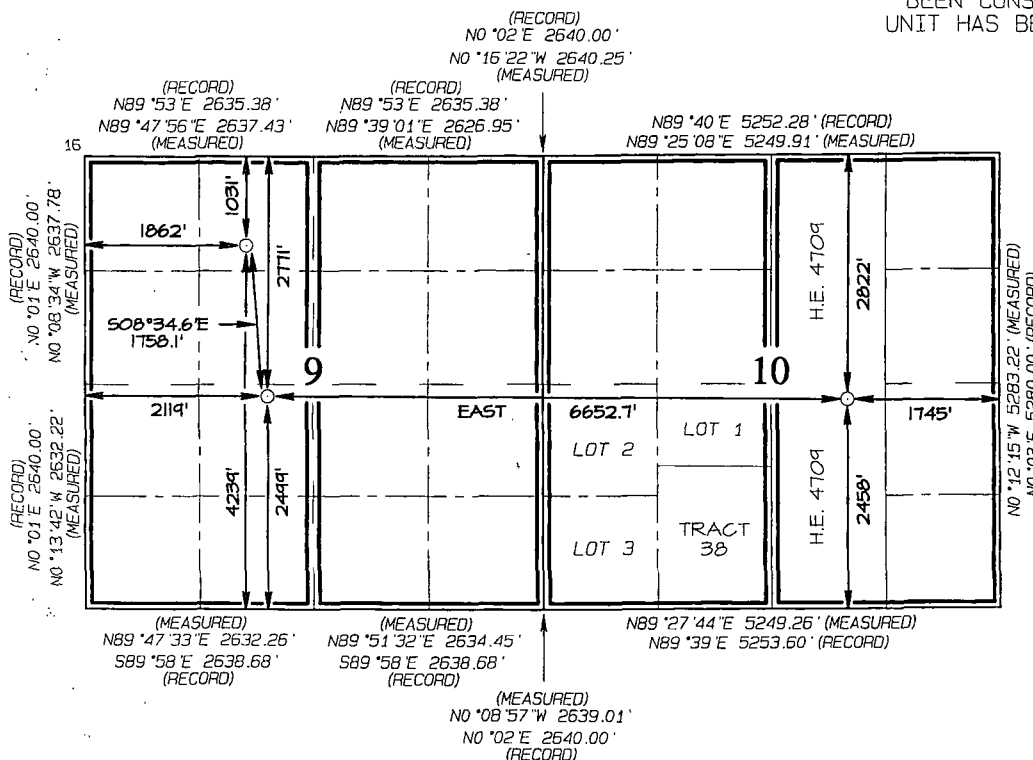
¹¹ Bottom Hole Location If Different From Surface

UL or lot no.	Section	Township	Range	Lot Idn	Feet from the	North/South line	Feet from the	East/West line	County
J	10	31N	6W		2458	SOUTH	1745	EAST	SAN JUAN

¹² Dedicated Acres 640.00 Acres - Entire Section 9 631.41 Acres - Entire Section 10	¹³ Joint or Infill	¹⁴ Consolidation Code	¹⁵ Order No. R-13457
------------------------------------------------------------------------------------------------------	-------------------------------	----------------------------------	------------------------------------

311.41 Acres - W/2 Section 10
320.00 Acres - E/2 Section 10

NO ALLOWABLE WILL BE ASSIGNED TO THIS
COMPLETION UNTIL ALL INTERESTS HAVE
BEEN CONSOLIDATED OR A NON-STANDARD
UNIT HAS BEEN APPROVED BY THE DIVISION



¹⁷ OPERATOR CERTIFICATION

I hereby certify that the information contained herein is true and complete to the best of my knowledge and belief, and that this organization either owns a working interest or unleased mineral interest in the land including the proposed bottom-hole location or has a right to drill this well at this location pursuant to a contract with an owner of such a mineral or working interest, or to a voluntary pooling agreement or a compulsory pooling order heretofore entered by the division.

Signature: *Larry Higgins* Date: 5/21/13

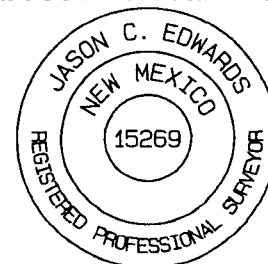
Printed Name: Larry Higgins
E-mail Address: larry.higgins@wpxenergy.com

¹⁸ SURVEYOR CERTIFICATION

I hereby certify that the well location shown on this plat was plotted from field notes of actual surveys made by me or under my supervision, and that the same is true and correct to the best of my belief.

Date Revised: MAY 20, 2013
Survey Date: JANUARY 13, 2012

Signature and Seal of Professional Surveyor



JASON C. EDWARDS

Certificate Number 15269

SURFACE LOCATION
1031' FNL 1862' FWL
SECTION 9, T31N, R6W
LAT: 36.91848°N
LONG: 107.47022°W
DATUM: NAD1927

POINT OF ENTRY
2499' FSL 2119' FWL
SECTION 9, T31N, R6W
LAT: 36.91370°N
LONG: 107.46935°W
DATUM: NAD1927

END OF LATERAL
2458' FSL 1745' FEL
SECTION 10, T31N, R6W
LAT: 36.91363°N
LONG: 107.44659°W
DATUM: NAD1927

LAT: 36.91848°N
LONG: 107.47082°W
DATUM: NAD1983

LAT: 36.91370°N
LONG: 107.46995°W
DATUM: NAD1983

LAT: 36.91363°N
LONG: 107.44719°W
DATUM: NAD1983

THE HORIZONTAL LATERAL REPRESENTED ON THIS PLAT CORRESPONDS
TO THE BLACK SEGMENT WHICH VARIES IN VERTICAL DEPTH.