

UNITED STATES  
DEPARTMENT OF THE INTERIOR  
BUREAU OF LAND MANAGEMENT

AUG 13 2013

FORM APPROVED  
OMB No. 1004-0137  
Expires: July 31, 2010

**SUNDRY NOTICES AND REPORTS ON WELLS**  
*Do not use this form for proposals to drill or to re-enter an abandoned well. Use Form 3160-3 (APD) for such proposals.*

5. Lease Serial No. **NM-013885**  
6. If Indian, Ailotee or Tribe Name

**SUBMIT IN TRIPLICATE - Other instructions on page 2.**

1. Type of Well

☐ Oil Well ☒ Gas Well ☐ Other

2. Name of Operator

**ConocoPhillips Company**

3a. Address

**PO Box 4289, Farmington, NM 87499**

3b. Phone No. (include area code)

**(505) 326-9700**

7. If Unit of CA/Agreement, Name and/or No.

8. Well Name and No.

**Maxey 1E**

9. API Well No.

**30-045-24010**

10. Field and Pool or Exploratory Area

**Basin Dakota**

4. Location of Well (Footage, Sec., T., R., M., or Survey Description)

**Surface UNIT C (NENW), 790' FNL & 1690' FWL, Sec. 24, T29N, R12W**

11. Country or Parish, State

**San Juan, New Mexico**

**12. CHECK THE APPROPRIATE BOX(ES) TO INDICATE NATURE OF NOTICE, REPORT OR OTHER DATA**

**TYPE OF SUBMISSION**

**TYPE OF ACTION**

☒ Notice of Intent

☐ Subsequent Report

☐ Final Abandonment Notice

☐ Acidize

☐ Alter Casing

☐ Casing Repair

☐ Change Plans

☐ Convert to Injection

☐ Deepen

☐ Fracture Treat

☐ New Construction

☒ Plug and Abandon

☐ Plug Back

☐ Production (Start/Resume)

☐ Reclamation

☐ Recomplete

☐ Temporarily Abandon

☐ Water Disposal

☐ Water Shut-Off

☐ Well Integrity

☐ Other

13. Describe Proposed or Completed Operation: Clearly state all pertinent details, including estimated starting date of any proposed work and approximate duration thereof. If the proposal is to deepen directionally or recompleat horizontally, give subsurface locations and measured and true vertical depths of all pertinent markers and zones. Attach the bond under which the work will be performed or provide the Bond No. on file with BLM/BIA. Required subsequent reports must be filed within 30 days following completion of the involved operations. If the operation results in a multiple completion or recompleat in a new interval, a Form 3160-4 must be filed once Testing has been completed. Final Abandonment Notices must be filed only after all requirements, including reclamation, have been completed and the operator has determined that the site is ready for final inspection.)

**ConocoPhillips requests permission to P&A the subject well per the attached procedure, current and proposed wellbore schematics. The Pre-Disturbance Site Visit was held on 8/1/13 with a BLM Representative. The Re-Vegetation Plan is attached. A Closed Loop System will be used.**

**RCVD AUG 19 '13  
OIL CONS. DIV.  
DIST. 3**

**Notify NMOCD 24 hrs  
prior to beginning  
operations**

14. I hereby certify that the foregoing is true and correct. Name (Printed/Typed)

**Denise Journey**

Title **Regulatory Technician**

Signature

*Denise Journey*

Date

**8/13/2013**

**THIS SPACE FOR FEDERAL OR STATE OFFICE USE**

Approved by

**Original Signed: Stephen Mason**

Title

Date

**AUG 15 2013**

Conditions of approval, if any, are attached. Approval of this notice does not warrant or certify that the applicant holds legal or equitable title to those rights in the subject lease which would entitle the applicant to conduct operations thereon.

Office

Title 18 U.S.C. Section 1001 and Title 43 U.S.C. Section 1212, make it a crime for any person knowingly and willfully to make to any department or agency of the United States any false, fictitious or fraudulent statements or representations as to any matter within its jurisdiction.

(Instruction on page 2)

**NMOCD**

# ConocoPhillips

## MAXEY 1E

### Expense - P&A

Lat 36° 43' 1.196" N

Long 108° 3' 10.8" W

#### PROCEDURE

This project requires a NMOCD C-144 CLEZ Closed-Loop System Permit for the use of an A-Plus steel tank to handle waste fluids circulated from the well and cement wash up.

1. Hold pre-job safety meeting. Comply with all NMOCD, BLM, and COPC safety and environmental regulations. Test rig anchors prior to moving in rig.
2. MIRU work over rig. Check casing, tubing, and bradenhead pressures and record them in Wellview.
3. When an existing primary valve (i.e. casing valve) is to be used, the existing piping should be removed and replaced with the appropriate piping for the intended operation.
4. RU blow lines from casing valves and begin blowing down casing pressure. Kill well with water, as necessary, and at least pump tubing capacity of water down tubing.
5. ND wellhead and NU BOPE. Pressure and function test BOP with a low test of 200-300 psi, and a high test of 1000 psi over MPSP not to exceed 70% of casing or well head rating. PU and remove tubing hanger.
6. Unseat packer and TOO H with tubing. Located tubing leak and LD bad joints.

Rods:	No	Size:		Length:	
Tubing:	Yes	Size:	2-3/8"	Length:	6140'
Packer:	Yes	Size:	4-1/2"	Depth:	5,997'

Round trip 3 7/8" watermelon mill to 6083' or as deep as possible.

All cement volumes use 100% excess outside pipe and 50' excess inside pipe. The stabilizing wellbore fluid will be 8.3 ppg, sufficient to balance all exposed formation pressures. All cement will be ASTM Type II mixed at 15.6 ppg with a 1.18 cf/sk yield.

#### 7. Plug 1 (Dakota Top/Perfs & Graneros Top, 5933-6033', 12 Sacks Class B Cement)

TIH and set 4 1/2" cement retainer on tubing at 6033'. Load tubing with water and pressure test tubing to 1000 psi. Unsting from retainer and load casing and tubing, circulate clean. Pressure test casing to 800 psi. Pressure test tubing to 1000#. Pressure test casing to 800#. If the casing does not test, then spot or tag subsequent plugs as appropriate. TOO H with tubing, run CBL from 6033' to surface, TIH. Mix 12 sxs Class B cement and spot inside the casing above the CR to isolate the Dakota & Graneros perfs & tops. PUH. Lay down tubing to 5280' after plug is pumped.

#### 8. Plug 2 (Gallup Top, 5180-5280', 12 Sacks Class B Cement)

Mix 12 sxs of Class B cement and spot a balanced plug to cover the Gallup formation top. PUH. Lay down tubing to 4373'.

#### 9. Plug 3 (Mancos Top, 4273-4373', 12 Sacks Class B Cement)

Mix 12 sxs of Class B cement and spot a balanced plug to cover the Mancos formation top. PUH. Lay down tubing to 3263'.

#### 10. Plug 4 (Mesa Verde Top, ~~3463-3263'~~ <sup>3226'-3126'</sup>, 12 Sacks Class B Cement)

Mix 12 sxs of Class B cement and spot a balanced plug to cover the Cliff House formation top. PUH. Lay down tubing to 1675'.

→ Chacra plug! 2662'-2562'

#### 11. Plug 5 (Pictured Cliffs Top, 1575-1675', 12 Sacks Class B Cement)

Mix 12 sxs of Class B cement and spot a balanced plug to cover the Pictured Cliffs formation top. PUH. Lay down tubing to 1140'.

1310' - 1210'

#### 12. Plug 6 (Fruitland Top, ~~4040-1140'~~, 12 Sacks Class B Cement)

Mix 12 sxs of Class B cement and spot a balanced plug to cover the Fruitland formation top. PUH. Lay down tubing to 536'.

**13. Plug 8 (Surface Shoe and Ojo Alamo & Kirtland Tops, 0-536', 45 Sacks Class B Cement)**

Connect the pump line to the bradenhead valve and attempt to pressure test the BH annulus to 300 PSI; note the volume to load. If the BH annulus holds pressure, then establish circulation out casing valve with water. Mix 45 sxs Class B cement and spot a balanced plug inside the casing from 536' to surface, circulate good cement out casing valve. TOH and LD tubing. Shut well in and WOC. If the BH annulus does not test, then perforate at the appropriate depth and attempt to circulate cement to surface filling the 4-1/2" casing annulus and the BH annulus to surface. Shut well in and WOC.

14. Nipple down BOP and cut off casing below the casing flange. Install P&A marker with cement to comply with regulations. Rig down, move off location, cut off anchors, and restore location.

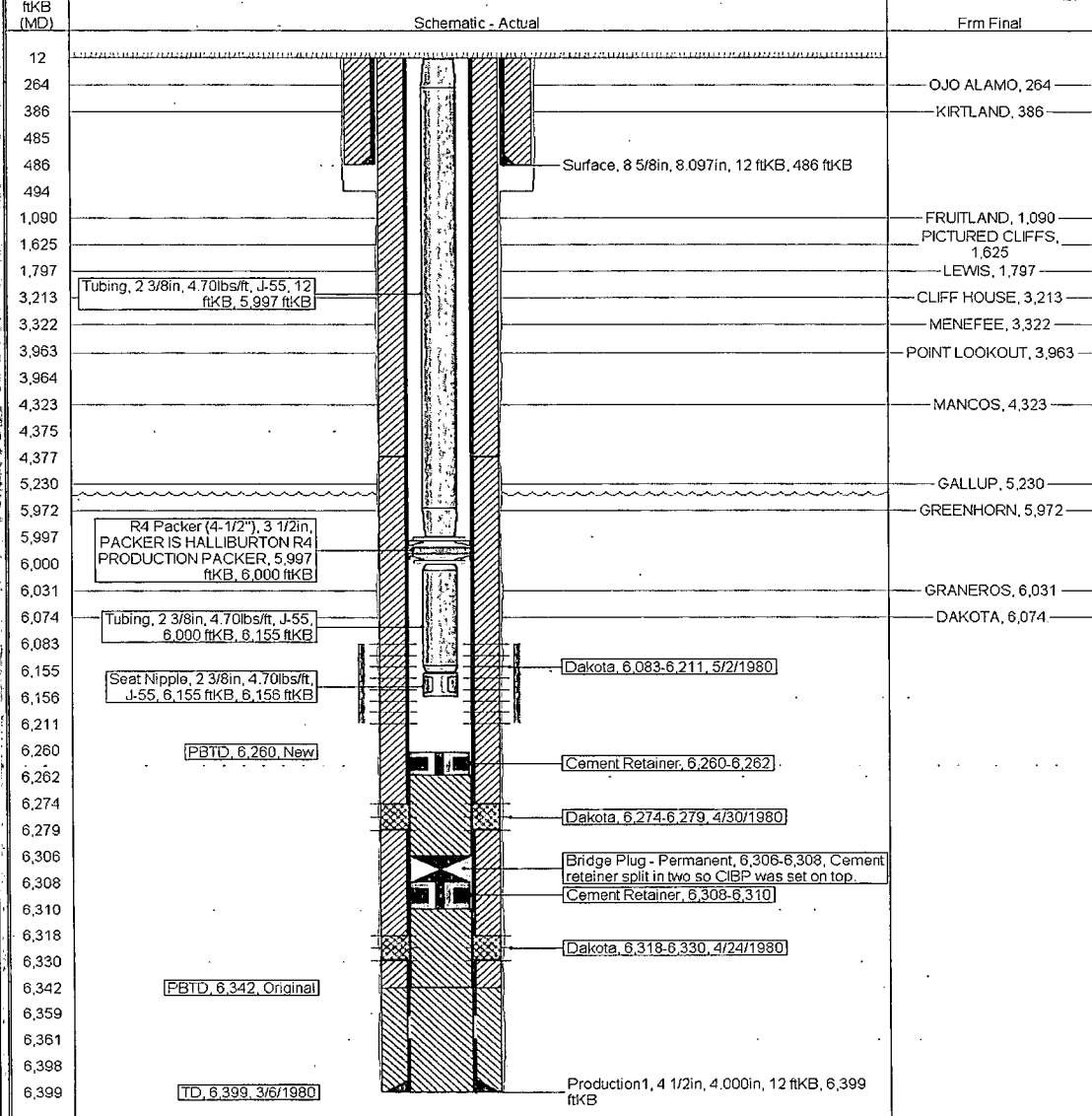
# Current Schematic - Version 1

ConocoPhillips

Well Name: MAXEY 1E

API / UWI 3004524010	Surface Legal Location NMPM-29N-12W-24-C	Field Name DK	License No.	State/Province NEW MEXICO	Well Configuration Type Vertical	Edit
Ground Elevation (ft) 5,544.00	Original KB/RT Elevation (ft) 5,554.00	KB-Ground Distance (ft) 10.00	KB-Casing Flange Distance (ft) 10.00	KB-Tubing Hanger Distance (ft) 10.00		

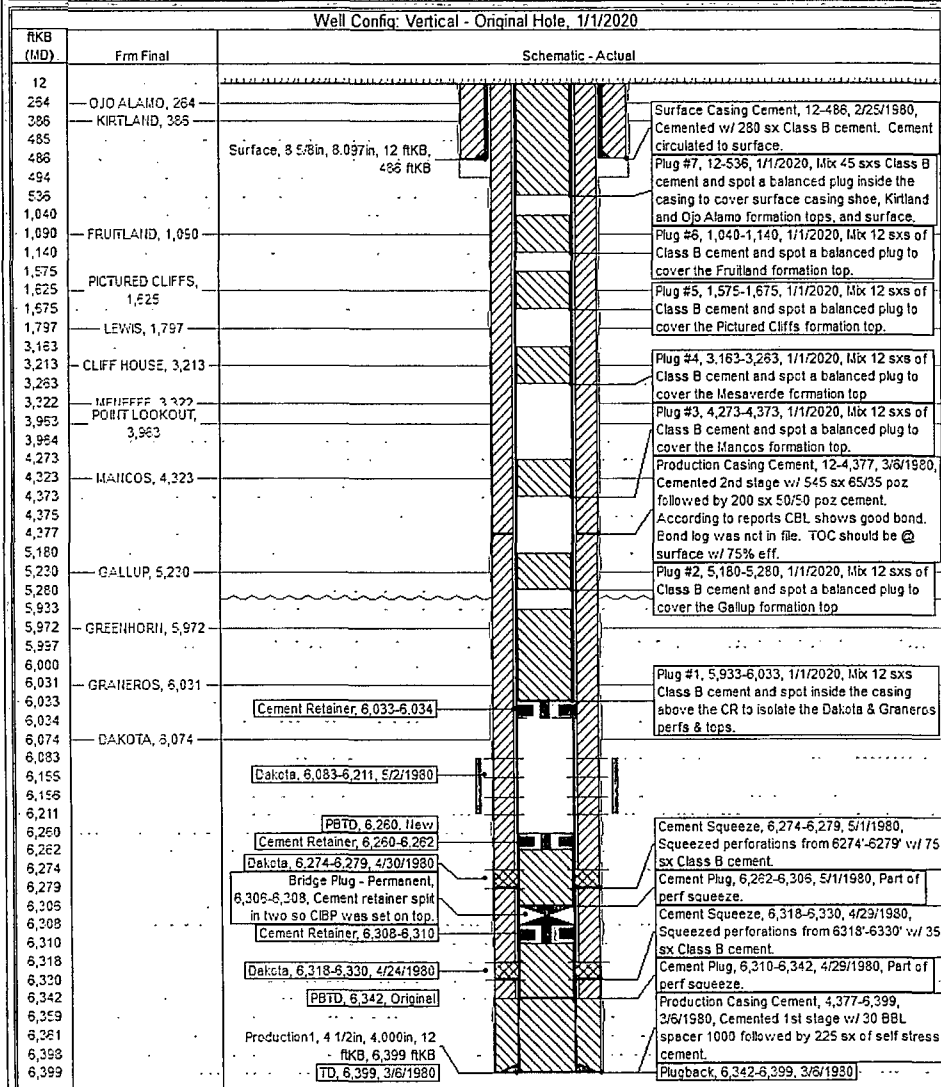
Well Config: Vertical - Original Hole, 6/17/2013 3:27:01 PM



**ConocoPhillips**  
Well Name: MAXEY 1E

**Proposed Schematic**

API Well 3004524010	Surface Legal Location NMPM-29N-12W-24-C	Field Name DK	License No.	State/Province NEW MEXICO	Well Configuration Type Vertical	Edit
Ground Elevation (ft) 5,544.00	Original KB RT Elevation (ft) 5,554.00	AS-Produced Elevation (ft) 10.00	AS-Produced Elevation (ft) 10.00	AS-Produced Elevation (ft) 10.00		



UNITED STATES DEPARTMENT OF THE INTERIOR  
BUREAU OF LAND MANAGEMENT  
FARMINGTON DISTRICT OFFICE  
6251 COLLEGE BLVD.  
FARMINGTON, NEW MEXICO 87402

Attachment to notice of  
Intention to Abandon:

Re: Permanent Abandonment  
Well: 1E Maxey

CONDITIONS OF APPROVAL

1. Plugging operations authorized are subject to the attached "General Requirements for Permanent Abandonment of Wells on Federal and Indian Lease."
2. Farmington Office is to be notified at least 24 hours before the plugging operations commence (505) 564-7750.
3. The following modifications to your plugging program are to be made:
  - a) Place the Measverde plug from 3226' – 3126'.
  - b) Spot a cement plug from 2662' – 2562' to cover the Chacra top.
  - c) Place the Fruitland plug from 1310' – 1210'.

You are also required to place cement excesses per 4.2 and 4.4 of the attached General Requirements.

Office Hours: 7:45 a.m. to 4:30 p.m.