

CONFIDENTIAL

CHACO 2408 32P #191H LYBROOK GALLUP Horizontal

(page 1)

Spud: 3/20/13

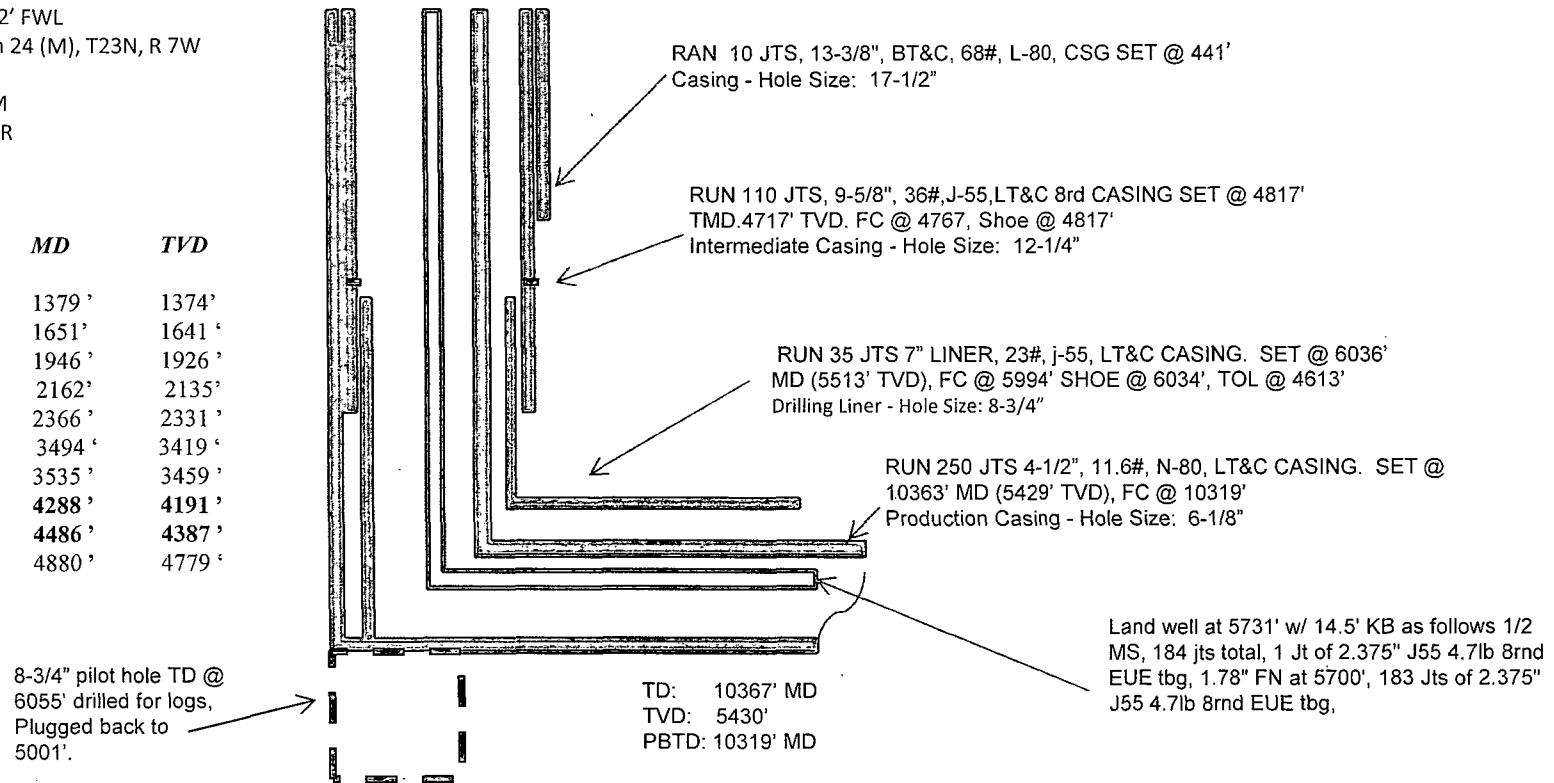
Completed: 6/17/13

Surface Location: 1236' FSL & 287' FWL
SW/4 SW4 Section 19 (M), T23N, R6W

BHL: 382' FS; & 342' FWL
SW/4 SW/4 Section 24 (M), T23N, R 7W

SANDOVAL Co., NM
Elevation: 7012' GR
API: 30-043-21139

Tops	MD	TVD
Ojo Alamo	1379'	1374'
Kirtland	1651'	1641'
Pictured Cliffs	1946'	1926'
Lewis	2162'	2135'
Chacra	2366'	2331'
Cliff House	3494'	3419'
Menefee	3535'	3459'
Point Lookout	4288'	4191'
Mancos	4486'	4387'
Gallup	4880'	4779'



HOLE SIZE	CASING	CEMENT	VOLUME	CMT TOP
17-1/2"	13-3/8"	510 sx	597 cu.ft.	Surface
12-1/4"	9-5/8"	2180 sx	3195 cu.ft.	Surface
8-3/4"	7"	350 sx	462 cu. ft.	5740' (CBL)
6-1/8"	4-1/2"	395 sx	539 cu. ft.	4900' TOC

Lg 6/17/13

Ar

CHACO 2408 32P #191H LYBROOK GALLUP Horizontal

(page 2 – lateral with completion)

Gallup 18th:
6100'-6260'-
with 24, 0.40"
holes. Frac
Gallup 18th
stage with
208,500# ,
20/40 PSA
Sand

Gallup 16th:
6540'-6698'-
with 24, 0.40"
holes. Frac
Gallup 16th
stage with
210,600# ,
20/40 PSA
Sand

Gallup 14th:
6984'-7152'- with
24, 0.40" holes.
Frac Gallup 14th
stage with
217,800# , 20/40
PSA Sand

Gallup 15th:
6764'-6882'- with
24, 0.40" holes.
Frac Gallup 15th
stage with
226,300# , 20/40
PSA Sand

Gallup 17th:
6320'-6501'-
with 24, 0.40"
holes. Frac
Gallup 17th
stage with
208,900# ,
20/40 PSA
Sand

Gallup 13th:
7224'-7376'- with
24, 0.40" holes.
Frac Gallup 13th
stage with
173,500# , 20/40
PSA Sand

Gallup 12th:
7460'-7626'- with
24, 0.40" holes.
Frac Gallup 12th
stage with
167,900# 20/40 PSA
Sand

Gallup 11th:
7700'-7902'- with
24, 0.40" holes.
Frac Gallup 11th
stage with
167,300# , 20/40
PSA Sand

Gallup 10th:
7942'-8130'- with
24, 0.40" holes.
Frac Gallup 10th
stage with 168,100#
20/40 PSA Sand

Gallup 9th:
8266'-8487'- with
24, 0.40" holes.
Frac Gallup 9th
stage with
169,800# , 20/40
PSA Sand

Gallup 8th:
8608'-8770'- with
24, 0.40" holes.
Frac Gallup 8th
stage with
171,400# , 20/40
PSA Sand

Gallup 7th:
8827'-8958'-
with 24, 0.40"
holes. Frac
Gallup 7th
stage with
172,500# ,
20/40 PSA
Sand

Gallup 6th:
9014'-9154' with
24, 0.40" holes.
Frac Gallup 6th
stage with
172,000# ,
20/40 PSA
Sand

Gallup 5th:
9205'-9344'- with
24, 0.40" holes.
Frac Gallup 5th
stage with
168,100# ,
20/40 PSA
Sand

Gallup 4th:
9398'-9582'-
with 24, 0.40"
holes. Frac
Gallup 4th stage
with 165,900# ,
20/40 PSA
Sand

Gallup 3rd: 9718'-
9844', 24, 0.40"
holes. Frac Gallup
3rd stage with
168,100# , 20/40
PSA Sand

Gallup 2nd:
9895'-10064'-
24 total, 0.40"
holes Frac
Gallup 2nd stage
with 165,800 #
20/40 PSA
Sand

Gallup 1st:
10159'-10318'-
stage with
165,400# 20/40
PSA Sand



See page 1 for upper portion of hole