

UNITED STATES
DEPARTMENT OF THE INTERIOR
BUREAU OF LAND MANAGEMENTFORM APPROVED
OMB No. 1004-0137
Expires: July 31, 2010

AUG 21 2013

SUNDRY NOTICES AND REPORTS ON WELLS
Do not use this form for proposals to drill or to re-enter an abandoned well. Use Form 3160-3 (APD) for such proposals.

SUBMIT IN TRIPLICATE - Other instructions on page 2.

1. Type of Well

☐ Oil Well☒ Gas Well☐ Other

2. Name of Operator

Burlington Resources Oil & Gas Company LP

3a. Address

PO Box 4289, Farmington, NM 87499

3b. Phone No. (include area code)

(505) 326-9700

7. If Unit of CA/Agreement, Name and/or No.

Canyon Largo Init

8. Well Name and No.

Canyon Largo Unit NP 158

9. API Well No.

30-039-20282

10. Field and Pool or Exploratory Area

Ballard PC

4. Location of Well (Footage, Sec., T., R., M., or Survey Description)

Surface UL J (NWSE), 1650' FSL & 1650' FEL, Sec.1, T24N, R7W

11. Country or Parish, State

Rio Arriba, New Mexico

12. CHECK THE APPROPRIATE BOX(ES) TO INDICATE NATURE OF NOTICE, REPORT OR OTHER DATA

TYPE OF SUBMISSION

TYPE OF ACTION

☒ Notice of Intent☒ Subsequent Report☐ Final Abandonment Notice☐ Acidize☐ Alter Casing☐ Casing Repair☐ Change Plans☐ Convert to Injection☐ Deepen☐ Fracture Treat☐ New Construction☒ Plug and Abandon☐ Plug Back☐ Production (Start/Resume)☐ Reclamation☐ Recomplete☐ Temporarily Abandon☐ Water Disposal☐ Water Shut-Off☐ Well Integrity☐ Other

13. Describe Proposed or Completed Operation: Clearly state all pertinent details, including estimated starting date of any proposed work and approximate duration thereof. If the proposal is to deepen directionally or recompleat horizontally, give subsurface locations and measured and true vertical depths of all pertinent markers and zones. Attach the bond under which the work will be performed or provide the Bond No. on file with BLM/BIA. Required subsequent reports must be filed within 30 days following completion of the involved operations. If the operation results in a multiple completion or recompleat in a new interval, a Form 3160-4 must be filed once Testing has been completed. Final Abandonment Notices must be filed only after all requirements, including reclamation, have been completed and the operator has determined that the site is ready for final inspection.)

Burlington Resources requests permission to P&A the subject well per the attached procedure, current & proposed wellbore schematics. The Pre-Disturbance site visit was held on 8/16/13 with Bob Switzer. The Revegetation Plan is attached. A closed loop system will be utilized for this P&A.

RCVD AUG 26 '13
OIL CONS. DIV.
DIST. 3Notify NMOCD 24 hrs
prior to beginning
operations

14. I hereby certify that the foregoing is true and correct. Name (Printed/Typed)

Kenny Davis

Title Staff Regulatory Technician

8/21/2013

Date

THIS SPACE FOR FEDERAL OR STATE OFFICE USE

Approved by

Original Signed: Stephen Mason

Title

Date

AUG 22 2013

Conditions of approval, if any, are attached. Approval of this notice does not warrant or certify that the applicant holds legal or equitable title to those rights in the subject lease which would entitle the applicant to conduct operations thereon.

Office

Title 18 U.S.C. Section 1001 and Title 43 U.S.C. Section 1212, make it a crime for any person knowingly and willfully to make to any department or agency of the United States any false, fictitious or fraudulent statements or representations as to any matter within its jurisdiction.

(Instruction on page 2)

NMOCD

ConocoPhillips
CANYON LARGO UNIT NP 158
Expense - P&A

Lat: 36° 20' 19.104" N

Long: 107° 31' 24.528" W

PROCEDURE

This project requires a NMOCD C-144 CLEZ Closed-Loop System Permit for the use of an A-Plus steel tank to handle waste fluids circulated from the well and cement wash up.

1. Hold pre-job safety meeting. Comply with all NMOCD, BLM, and COPC safety and environmental regulations. Test rig anchors prior to moving in rig.
2. MIRU workover rig. Check casing, tubing, and bradenhead pressures and record them in Wellview.
3. When an existing primary valve (i.e., casing valve) is to be used, the existing piping should be removed and replaced with the appropriate piping for the intended operation.
4. RU blow lines from casing valves and begin blowing down casing pressure. Kill well with water, as necessary, and pump tubing capacity of water down tubing.
5. ND wellhead and NU BOPE. Function and pressure test BOP. Use a test range of 200-300 psi for a low pressure test and 1500 psi for a high pressure test. PU and remove tubing hanger.

6. TOOH with tubing (per pertinent data sheet).

Tubing: Size: 1.66" OD 2.33 ppf J-55 Length: 2,252'

Round trip with a 2-1/4" bit and watermelon mill to the top perf @ 2,232' or as deep as possible above the perms.

All cement volumes use 100% excess outside pipe and 50' excess inside pipe. The stabilizing wellbore fluid will be 8.3 ppg, sufficient to balance all exposed formation pressures. All cement will be Class B/ASTM Type II mixed at 15.6 ppg with a 1.18 cf/sk yield.

- Fruitland 1980
7. Plug #1 (Perforations, Pictured Cliffs formation top: ~~2,002'~~ ^{1980'} – 2,182', 8' sacks Class B cement)

Pump 12 bbls of clean water. RU wireline and RIH and set 2-7/8" CIBP at 2,182'. POOH with wireline. Top load casing. Pressure test casing to 800 PSI. RIH with wireline and run CBL from 2,182' to surface under 500 psi pressure. Send CBL to Wells Engineer, Superintendent and Regulatory. Based on TOC, adjust plugs as needed to ensure cement coverage inside and outside of pipe for isolation. If casing does not test, tag plugs as necessary. TIH with tubing open ended. Mix 8' sx Class B cement and spot a balanced plug inside casing to isolate the perforations and Pictured Cliffs formation top. POOH

- Fruitland, Kirtland, Ojo Alamo 1768 1570
8. Plug #2 (Fruitland, Kirtland, Ojo Alamo tops: ~~1,500'~~ ^{1768'} – ~~1,880'~~ ^{1570'}, 134 sacks Class B cement)

RIH with wireline and perf 3 HSC squeeze holes at 1,880'. Set CR with wireline at 1,830'. TIH with tubing and sting in to CR. Pressure test tubing to 1,000 psi. Establish injection through squeeze holes. Mix 134 sxs Class B cement. Sqz 122 sx Class B cement into HSC holes and leave 12 sx inside casing to isolate the Fruitland, Kirtland and Ojo Alamo tops. POOH.

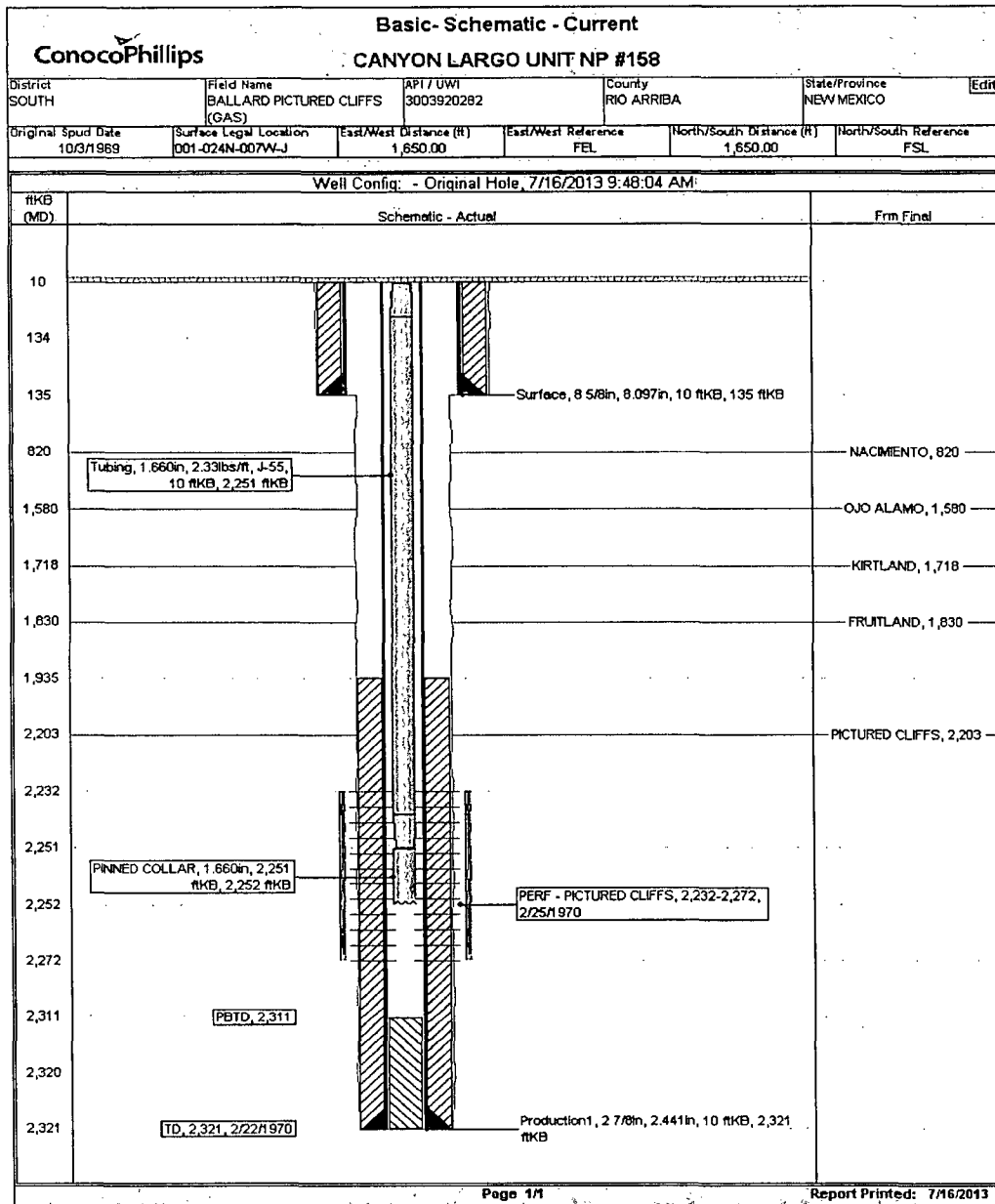
- Nacimeinto 770' - 870'
9. Plug #3 (Nacimeinto top: 770' – 870', 41 sacks Class B cement)

RIH with wireline and perf 3 HSC squeeze holes at 870'. Set CR with wireline at 820'. TIH with tubing and sting in to CR. Establish injection through squeeze holes. Mix 41 sxs Class B cement. Sqz 36 sx Class B cement into HSC holes and leave 5 sx inside casing to isolate the Nacimeinto formation top. POOH.

- Nacimeinto
10. Plug #4 (Surface casing shoe and surface: surface –185', 76 sacks Class B cement)

RIH with wireline and perf 3 HSC squeeze holes at 185'. Establish circulation through squeeze holes. Mix 76 sxs Class B cement. Sqz Class B cement into HSC holes and circulate cement to surface through bradenhead to isolate the surface casing & bradenhead. Shut in well and WOC. Tag cement top and top out cement as necessary.

11. Nipple down BOP and cut off casing below the casing flange. Install P&A marker with cement to comply with regulations. Rig down, move off location, cut off anchors, and restore location.



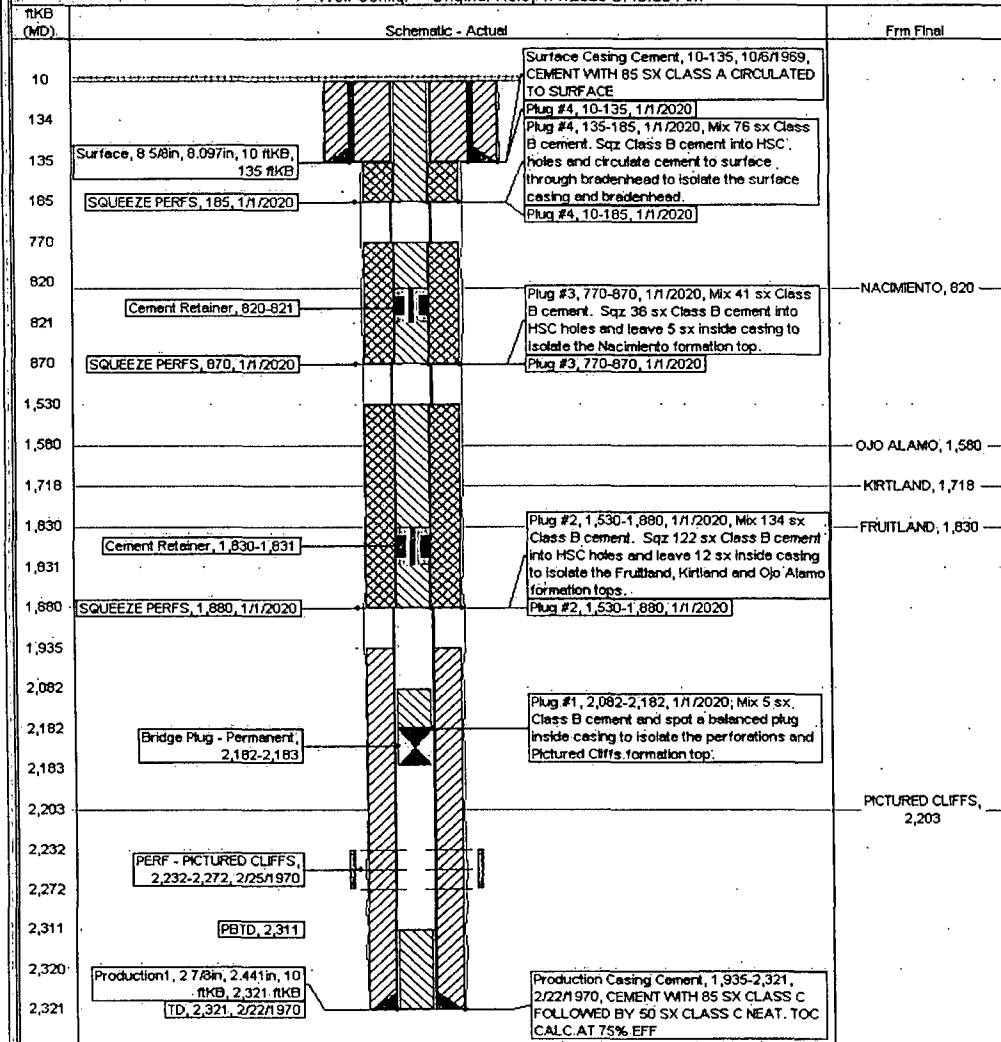
Proposed Schematic

ConocoPhillips

Well Name: CANYON LARGO UNIT NP #158

API Well	Caswell Legal Location	Well Name	Location No.	State/Province	Well Originator Type
3003920282	001-024N-007W-J	CANYON LARGO UNIT NP #158		NEW MEXICO	Edit
Ground Elevation (ft)	Original Well Elevation (ft)	Well Depth (ft)	Well Depth (ft)	Well Depth (ft)	Well Depth (ft)
6,593.00	6,603.00	10.00			

Well Config: - Original Hole, 1/1/2020 3:45:00 AM



UNITED STATES DEPARTMENT OF THE INTERIOR
BUREAU OF LAND MANAGEMENT
FARMINGTON DISTRICT OFFICE
6251 COLLEGE BLVD.
FARMINGTON, NEW MEXICO 87402

Attachment to notice of
Intention to Abandon:

Re: Permanent Abandonment
Well: 158 Canyon Largo Unit

CONDITIONS OF APPROVAL

1. Plugging operations authorized are subject to the attached "General Requirements for Permanent Abandonment of Wells on Federal and Indian Lease."
2. Farmington Office is to be notified at least 24 hours before the plugging operations commence (505) 564-7750.
3. The following modifications to your plugging program are to be made:
 - a) Place the Pictured Cliffs/Fruitland plug from 2182' – 1918'.
 - b) Place the Kirtland/Ojo Alamo plug from 1768' – 1510' inside and outside the 2 7/8" casing.

Note: the Nacimiento top is @ 78'.

You are also required to place cement excesses per 4.2 and 4.4 of the attached General Requirements.

Office Hours: 7:45 a.m. to 4:30 p.m.