

District I
1625 N. French Dr., Hobbs, NM 88240
District II
811 S. First St., Artesia, NM 88210
District III
1000 Rio Brazos Road, Aztec, NM 87410
District IV
1220 S. St. Francis Dr., Santa Fe, NM 87505

State of New Mexico
Energy Minerals and Natural Resources
Department
Oil Conservation Division
1220 South St. Francis Dr.
Santa Fe, NM 87505

Form C-144
Revised June 6, 2013

For temporary pits, below-grade tanks, and multi-well fluid management pits, submit to the appropriate NMOCD District Office.
For permanent pits submit to the Santa Fe Environmental Bureau office and provide a copy to the appropriate NMOCD District Office.

**Pit, Below-Grade Tank, or
Proposed Alternative Method Permit or Closure Plan Application**

- Type of action: ☐ Below grade tank registration
☒ Permit of a pit or proposed alternative method
☐ Closure of a pit, below-grade tank, or proposed alternative method
☐ Modification to an existing permit/or registration
☐ Closure plan only submitted for an existing permitted or non-permitted pit, below-grade tank, or proposed alternative method

Instructions: Please submit one application (Form C-144) per individual pit, below-grade tank or alternative request

Please be advised that approval of this request does not relieve the operator of liability should operations result in pollution of surface water, ground water or the environment. Nor does approval relieve the operator of its responsibility to comply with any other applicable governmental authority's rules, regulations or ordinances.

1.
Operator: Logos Operating, LLC. OGRID #: 289408
Address: 4001 North Butler Ave, Building 7101, Farmington, NM 87401
Facility or well name: Roadrunner 2X
API Number: 30-045-35494 OCD Permit Number: _____
U/L or Qtr/Qtr H Section 02 Township 24N Range 08W County: San Juan
Center of Proposed Design: Latitude 36.343816°N Longitude 107.645932°W NAD: ☐ 1927 ☒ 1983
Surface Owner: ☐ Federal ☒ State ☐ Private ☐ Tribal Trust or Indian Allotment

2.
☒ **Pit:** Subsection F, G or J of 19.15.17.11 NMAC
Temporary: ☒ Drilling ☐ Workover
☐ Permanent ☐ Emergency ☐ Cavitation ☐ P&A ☐ Multi-Well Fluid Management Low Chloride Drilling Fluid ☒ yes ☐ no
☒ Lined ☐ Unlined Liner type: Thickness 20 mil ☒ LLDPE ☐ HDPE ☐ PVC ☐ Other _____
☐ String-Reinforced
Liner Seams: ☒ Welded ☒ Factory ☐ Other _____ Volume: 8,000 bbl Dimensions: L 130' x W 60' x D 10'

RCVD OCT 16 '13
OIL CONS. DIV.
DIST. 3

3.
☐ **Below-grade tank:** Subsection I of 19.15.17.11 NMAC
Volume: _____ bbl Type of fluid: _____
Tank Construction material: _____
☐ Secondary containment with leak detection ☐ Visible sidewalls, liner, 6-inch lift and automatic overflow shut-off
☐ Visible sidewalls and liner ☐ Visible sidewalls only ☐ Other _____
Liner type: Thickness _____ mil ☐ HDPE ☐ PVC ☐ Other _____

4.
☐ **Alternative Method:**
Submittal of an exception request is required. Exceptions must be submitted to the Santa Fe Environmental Bureau office for consideration of approval.

5.
Fencing: Subsection D of 19.15.17.11 NMAC (Applies to permanent pits, temporary pits, and below-grade tanks)
☐ Chain link, six feet in height, two strands of barbed wire at top (Required if located within 1000 feet of a permanent residence, school, hospital, institution or church)
☐ Four foot height, four strands of barbed wire evenly spaced between one and four feet
☒ Alternate. Please specify: 4' hog wire with one strand of barbed wire on top

6.

Netting: Subsection E of 19.15.17.11 NMAC (*Applies to permanent pits and permanent open top tanks*)

☐ Screen ☐ Netting ☐ Other _____

☐ Monthly inspections (If netting or screening is not physically feasible)

7.

Signs: Subsection C of 19.15.17.11 NMAC

☐ 12"x 24", 2" lettering, providing Operator's name, site location, and emergency telephone numbers

☒ Signed in compliance with 19.15.16.8 NMAC

8.

Variances and Exceptions:

Justifications and/or demonstrations of equivalency are required. Please refer to 19.15.17 NMAC for guidance.

Please check a box if one or more of the following is requested, if not leave blank:

☒ Variance(s): Requests must be submitted to the appropriate division district for consideration of approval.

☐ Exception(s): Requests must be submitted to the Santa Fe Environmental Bureau office for consideration of approval.

9.

Siting Criteria (regarding permitting): 19.15.17.10 NMAC

Instructions: The applicant must demonstrate compliance for each siting criteria below in the application. Recommendations of acceptable source material are provided below. Siting criteria does not apply to drying pads or above-grade tanks.

General siting

Ground water is less than 25 feet below the bottom of a low chloride temporary pit or below-grade tank.

- ☐ NM Office of the State Engineer - iWATERS database search; ☐ USGS; ☐ Data obtained from nearby wells

☐ Yes ☒ No
☐ NA

Ground water is less than 50 feet below the bottom of a Temporary pit, permanent pit, or Multi-Well Fluid Management pit.

NM Office of the State Engineer - iWATERS database search; USGS; Data obtained from nearby wells

☐ Yes ☒ No
☐ NA

Within incorporated municipal boundaries or within a defined municipal fresh water well field covered under a municipal ordinance adopted pursuant to NMSA 1978, Section 3-27-3, as amended. (**Does not apply to below grade tanks**)

- Written confirmation or verification from the municipality; Written approval obtained from the municipality

☐ Yes ☒ No

Within the area overlying a subsurface mine. (**Does not apply to below grade tanks**)

- Written confirmation or verification or map from the NM EMNRD-Mining and Mineral Division

☐ Yes ☒ No

Within an unstable area. (**Does not apply to below grade tanks**)

- Engineering measures incorporated into the design; NM Bureau of Geology & Mineral Resources; USGS; NM Geological Society; Topographic map

☐ Yes ☒ No

Within a 100-year floodplain. (**Does not apply to below grade tanks**)

- FEMA map

☐ Yes ☒ No

Below Grade Tanks

Within 100 feet of a continuously flowing watercourse, significant watercourse, lake bed, sinkhole, wetland or playa lake (measured from the ordinary high-water mark).

- Topographic map; Visual inspection (certification) of the proposed site

☐ Yes ☐ No

Within 200 horizontal feet of a spring or a fresh water well used for public or livestock consumption;

- NM Office of the State Engineer - iWATERS database search; Visual inspection (certification) of the proposed site

☐ Yes ☐ No

Temporary Pit using Low Chloride Drilling Fluid (maximum chloride content 15,000 mg/liter)

Within 100 feet of a continuously flowing watercourse, or any other significant watercourse or within 200 feet of any lakebed, sinkhole, or playa lake (measured from the ordinary high-water mark). (Applies to low chloride temporary pits.)

- Topographic map; Visual inspection (certification) of the proposed site

☐ Yes ☒ No

Within 300 feet from a occupied permanent residence, school, hospital, institution, or church in existence at the time of initial application.

- Visual inspection (certification) of the proposed site; Aerial photo; Satellite image

☐ Yes ☒ No

Within 200 horizontal feet of a spring or a private, domestic fresh water well used by less than five households for domestic or stock watering purposes, or 300feet of any other fresh water well or spring, in existence at the time of the initial application.

NM Office of the State Engineer - iWATERS database search; Visual inspection (certification) of the proposed site

☐ Yes ☒ No

Within 100 feet of a wetland.

- US Fish and Wildlife Wetland Identification map; Topographic map; Visual inspection (certification) of the proposed site

☐ Yes ☒ No

Temporary Pit Non-low chloride drilling fluid

Within 300 feet of a continuously flowing watercourse, or any other significant watercourse, or within 200 feet of any lakebed, sinkhole, or playa lake (measured from the ordinary high-water mark).

- Topographic map; Visual inspection (certification) of the proposed site

☐ Yes ☐ No

Within 300 feet from a permanent residence, school, hospital, institution, or church in existence at the time of initial application.

- Visual inspection (certification) of the proposed site; Aerial photo; Satellite image

☐ Yes ☐ No

Within 500 horizontal feet of a spring or a private, domestic fresh water well used by less than five households for domestic or stock watering purposes, or 1000 feet of any other fresh water well or spring, in the existence at the time of the initial application;

- NM Office of the State Engineer - iWATERS database search; Visual inspection (certification) of the proposed site

☐ Yes ☐ No

Within 300 feet of a wetland.

- US Fish and Wildlife Wetland Identification map; Topographic map; Visual inspection (certification) of the proposed site

☐ Yes ☐ No

Permanent Pit or Multi-Well Fluid Management Pit

Within 300 feet of a continuously flowing watercourse, or 200 feet of any other significant watercourse, or lakebed, sinkhole, or playa lake (measured from the ordinary high-water mark).

- Topographic map; Visual inspection (certification) of the proposed site

☐ Yes ☐ No

Within 1000 feet from a permanent residence, school, hospital, institution, or church in existence at the time of initial application.

- Visual inspection (certification) of the proposed site; Aerial photo; Satellite image

☐ Yes ☐ No

Within 500 horizontal feet of a spring or a fresh water well used for domestic or stock watering purposes, in existence at the time of initial application.

- NM Office of the State Engineer - iWATERS database search; Visual inspection (certification) of the proposed site

☐ Yes ☐ No

Within 500 feet of a wetland.

- US Fish and Wildlife Wetland Identification map; Topographic map; Visual inspection (certification) of the proposed site

☐ Yes ☐ No

10.

Temporary Pits, Emergency Pits, and Below-grade Tanks Permit Application Attachment Checklist: Subsection B of 19.15.17.9 NMAC

Instructions: Each of the following items must be attached to the application. Please indicate, by a check mark in the box, that the documents are attached.

- ☐ Hydrogeologic Report (Below-grade Tanks) - based upon the requirements of Paragraph (4) of Subsection B of 19.15.17.9 NMAC
- ☒ Hydrogeologic Data (Temporary and Emergency Pits) - based upon the requirements of Paragraph (2) of Subsection B of 19.15.17.9 NMAC
- ☒ Siting Criteria Compliance Demonstrations - based upon the appropriate requirements of 19.15.17.10 NMAC
- ☒ Design Plan - based upon the appropriate requirements of 19.15.17.11 NMAC
- ☒ Operating and Maintenance Plan - based upon the appropriate requirements of 19.15.17.12 NMAC
- ☒ Closure Plan (Please complete Boxes 14 through 18, if applicable) - based upon the appropriate requirements of Subsection C of 19.15.17.9 NMAC and 19.15.17.13 NMAC

☐ Previously Approved Design (attach copy of design) API Number: _____ or Permit Number: _____

11.

Multi-Well Fluid Management Pit Checklist: Subsection B of 19.15.17.9 NMAC

Instructions: Each of the following items must be attached to the application. Please indicate, by a check mark in the box, that the documents are attached.

- ☐ Design Plan - based upon the appropriate requirements of 19.15.17.11 NMAC
- ☐ Operating and Maintenance Plan - based upon the appropriate requirements of 19.15.17.12 NMAC
- ☐ A List of wells with approved application for permit to drill associated with the pit.
- ☐ Closure Plan (Please complete Boxes 14 through 18, if applicable) - based upon the appropriate requirements of Subsection C of 19.15.17.9 NMAC and 19.15.17.13 NMAC
- ☐ Hydrogeologic Data - based upon the requirements of Paragraph (4) of Subsection B of 19.15.17.9 NMAC
- ☐ Siting Criteria Compliance Demonstrations - based upon the appropriate requirements of 19.15.17.10 NMAC

☐ Previously Approved Design (attach copy of design) API Number: _____ or Permit Number: _____

12.

Permanent Pits Permit Application Checklist: Subsection B of 19.15.17.9 NMAC

Instructions: Each of the following items must be attached to the application. Please indicate, by a check mark in the box, that the documents are attached.

- ☐ Hydrogeologic Report - based upon the requirements of Paragraph (1) of Subsection B of 19.15.17.9 NMAC
☐ Siting Criteria Compliance Demonstrations - based upon the appropriate requirements of 19.15.17.10 NMAC
☐ Climatological Factors Assessment
☐ Certified Engineering Design Plans - based upon the appropriate requirements of 19.15.17.11 NMAC
☐ Dike Protection and Structural Integrity Design - based upon the appropriate requirements of 19.15.17.11 NMAC
☐ Leak Detection Design - based upon the appropriate requirements of 19.15.17.11 NMAC
☐ Liner Specifications and Compatibility Assessment - based upon the appropriate requirements of 19.15.17.11 NMAC
☐ Quality Control/Quality Assurance Construction and Installation Plan
☐ Operating and Maintenance Plan - based upon the appropriate requirements of 19.15.17.12 NMAC
☐ Freeboard and Overtopping Prevention Plan - based upon the appropriate requirements of 19.15.17.11 NMAC
☐ Nuisance or Hazardous Odors, including H₂S, Prevention Plan
☐ Emergency Response Plan
☐ Oil Field Waste Stream Characterization
☐ Monitoring and Inspection Plan
☐ Erosion Control Plan
☐ Closure Plan - based upon the appropriate requirements of Subsection C of 19.15.17.9 NMAC and 19.15.17.13 NMAC

13.

Proposed Closure: 19.15.17.13 NMAC

Instructions: Please complete the applicable boxes, Boxes 14 through 18, in regards to the proposed closure plan.

- Type: ☒ Drilling ☐ Workover ☐ Emergency ☐ Cavitation ☐ P&A ☐ Permanent Pit ☐ Below-grade Tank ☐ Multi-well Fluid Management Pit
☐ Alternative
- Proposed Closure Method: ☐ Waste Excavation and Removal
☐ Waste Removal (Closed-loop systems only)
☒ On-site Closure Method (Only for temporary pits and closed-loop systems)
☒ In-place Burial ☐ On-site Trench Burial
☐ Alternative Closure Method

14.

Waste Excavation and Removal Closure Plan Checklist: (19.15.17.13 NMAC) **Instructions:** Each of the following items must be attached to the closure plan. Please indicate, by a check mark in the box, that the documents are attached.

- ☐ Protocols and Procedures - based upon the appropriate requirements of 19.15.17.13 NMAC
☐ Confirmation Sampling Plan (if applicable) - based upon the appropriate requirements of Subsection C of 19.15.17.13 NMAC
☐ Disposal Facility Name and Permit Number (for liquids, drilling fluids and drill cuttings)
☐ Soil Backfill and Cover Design Specifications - based upon the appropriate requirements of Subsection H of 19.15.17.13 NMAC
☐ Re-vegetation Plan - based upon the appropriate requirements of Subsection H of 19.15.17.13 NMAC
☐ Site Reclamation Plan - based upon the appropriate requirements of Subsection H of 19.15.17.13 NMAC

15.

Siting Criteria (regarding on-site closure methods only): 19.15.17.10 NMAC

Instructions: Each siting criteria requires a demonstration of compliance in the closure plan. Recommendations of acceptable source material are provided below. Requests regarding changes to certain siting criteria require justifications and/or demonstrations of equivalency. Please refer to 19.15.17.10 NMAC for guidance.

- | | |
|---|--|
| Ground water is less than 25 feet below the bottom of the buried waste.
- NM Office of the State Engineer - iWATERS database search; USGS; Data obtained from nearby wells | <input type="checkbox"/> Yes <input checked="" type="checkbox"/> No
<input type="checkbox"/> NA |
| Ground water is between 25-50 feet below the bottom of the buried waste
- NM Office of the State Engineer - iWATERS database search; USGS; Data obtained from nearby wells | <input type="checkbox"/> Yes <input checked="" type="checkbox"/> No
<input type="checkbox"/> NA |
| Ground water is more than 100 feet below the bottom of the buried waste.
- NM Office of the State Engineer - iWATERS database search; USGS; Data obtained from nearby wells | <input checked="" type="checkbox"/> Yes <input type="checkbox"/> No
<input type="checkbox"/> NA |
| Within 100 feet of a continuously flowing watercourse, or 200 feet of any other significant watercourse, lakebed, sinkhole, or playa lake (measured from the ordinary high-water mark).
- Topographic map; Visual inspection (certification) of the proposed site | <input type="checkbox"/> Yes <input checked="" type="checkbox"/> No |
| Within 300 feet from a permanent residence, school, hospital, institution, or church in existence at the time of initial application.
- Visual inspection (certification) of the proposed site; Aerial photo; Satellite image | <input type="checkbox"/> Yes <input checked="" type="checkbox"/> No |
| Within 300 horizontal feet of a private, domestic fresh water well or spring used for domestic or stock watering purposes, in existence at the time of initial application.
- NM Office of the State Engineer - iWATERS database; Visual inspection (certification) of the proposed site | <input type="checkbox"/> Yes <input checked="" type="checkbox"/> No |
| Written confirmation or verification from the municipality; Written approval obtained from the municipality | <input type="checkbox"/> Yes <input type="checkbox"/> No |
| Within 300 feet of a wetland.
US Fish and Wildlife Wetland Identification map; Topographic map; Visual inspection (certification) of the proposed site | <input type="checkbox"/> Yes <input checked="" type="checkbox"/> No |
| Within incorporated municipal boundaries or within a defined municipal fresh water well field covered under a municipal ordinance | |

adopted pursuant to NMSA 1978, Section 3-27-3, as amended.

- Written confirmation or verification from the municipality; Written approval obtained from the municipality

☐ Yes ☒ No

Within the area overlying a subsurface mine.

- Written confirmation or verification or map from the NM EMNRD-Mining and Mineral Division

☐ Yes ☒ No

Within an unstable area.

- Engineering measures incorporated into the design; NM Bureau of Geology & Mineral Resources; USGS; NM Geological Society; Topographic map

☐ Yes ☒ No

Within a 100-year floodplain.

- FEMA map

☐ Yes ☒ No

16.

On-Site Closure Plan Checklist: (19.15.17.13 NMAC) *Instructions: Each of the following items must be attached to the closure plan. Please indicate, by a check mark in the box, that the documents are attached.*

- ☐ Siting Criteria Compliance Demonstrations - based upon the appropriate requirements of 19.15.17.10 NMAC
☐ Proof of Surface Owner Notice - based upon the appropriate requirements of Subsection E of 19.15.17.13 NMAC
☐ Construction/Design Plan of Burial Trench (if applicable) based upon the appropriate requirements of Subsection K of 19.15.17.11 NMAC
☐ Construction/Design Plan of Temporary Pit (for in-place burial of a drying pad) - based upon the appropriate requirements of 19.15.17.11 NMAC
☐ Protocols and Procedures - based upon the appropriate requirements of 19.15.17.13 NMAC
☐ Confirmation Sampling Plan (if applicable) - based upon the appropriate requirements of 19.15.17.13 NMAC
☐ Waste Material Sampling Plan - based upon the appropriate requirements of 19.15.17.13 NMAC
☐ Disposal Facility Name and Permit Number (for liquids, drilling fluids and drill cuttings or in case on-site closure standards cannot be achieved)
☐ Soil Cover Design - based upon the appropriate requirements of Subsection H of 19.15.17.13 NMAC
☐ Re-vegetation Plan - based upon the appropriate requirements of Subsection H of 19.15.17.13 NMAC
☐ Site Reclamation Plan - based upon the appropriate requirements of Subsection H of 19.15.17.13 NMAC

17.

Operator Application Certification:

I hereby certify that the information submitted with this application is true, accurate and complete to the best of my knowledge and belief.

Name (Print): Tamra Sessions

Title: Operations Technician

Signature: 

Date: 10/15/13

e-mail address: tsessions@logosresourcesllc.com

Telephone: 505-330-9333

18.

OCD Approval: ☒ Permit Application (including closure plan) ☐ Closure Plan (only) ☐ OCD Conditions (see attachment)

OCD Representative Signature: 

Approval Date: 10/17/2013

Title: Compliance Officer

OCD Permit Number: _____

19.

Closure Report (required within 60 days of closure completion): 19.15.17.13 NMAC

Instructions: Operators are required to obtain an approved closure plan prior to implementing any closure activities and submitting the closure report. The closure report is required to be submitted to the division within 60 days of the completion of the closure activities. Please do not complete this section of the form until an approved closure plan has been obtained and the closure activities have been completed.

☐ Closure Completion Date: _____

20.

Closure Method:

- ☐ Waste Excavation and Removal ☐ On-Site Closure Method ☐ Alternative Closure Method ☐ Waste Removal (Closed-loop systems only)
☐ If different from approved plan, please explain.

21.

Closure Report Attachment Checklist: *Instructions: Each of the following items must be attached to the closure report. Please indicate, by a check mark in the box, that the documents are attached.*

- ☐ Proof of Closure Notice (surface owner and division)
☐ Proof of Deed Notice (required for on-site closure for private land only)
☐ Plot Plan (for on-site closures and temporary pits)
☐ Confirmation Sampling Analytical Results (if applicable)
☐ Waste Material Sampling Analytical Results (required for on-site closure)
☐ Disposal Facility Name and Permit Number
☐ Soil Backfilling and Cover Installation
☐ Re-vegetation Application Rates and Seeding Technique
☐ Site Reclamation (Photo Documentation)

On-site Closure Location: Latitude _____ Longitude _____ NAD: ☐ 1927 ☐ 1983

Operator Closure Certification:

I hereby certify that the information and attachments submitted with this closure report is true, accurate and complete to the best of my knowledge and belief. I also certify that the closure complies with all applicable closure requirements and conditions specified in the approved closure plan.

Name (Print): _____ Title: _____

Signature: _____ Date: _____

e-mail address: _____ Telephone: _____

**Logos Operating, LLC
San Juan Basin
Variance Explanation**

C-144 Item #5 Fencing

Per 19.15.17.11 D (3) The operator shall fence any other pit or below-grade tank to exclude livestock with a 'four foot fence that has at least four strands of barbed wire' evenly spaced in the interval between one foot and four feet above ground level.

Logos Operating has requested a variance on the fencing material and plans to use 4' hog wire with one strand of barbed wire on top.

C-144 Temporary Pit Closure Plan Attachment Item #13 a.

Per 19.15.17.13 F (3) The operator shall place a steel marker at the center of an onsite burial. The steel marker shall be not less than four inches in diameter and shall be cemented in a three-foot deep hole at a minimum. The steel marker shall extend at least four feet above mean ground level and at least three feet below ground level. The operator name, lease name and well number and location, including unit letter, section, township and range, and that the marker designates an onsite burial location shall be welded, stamped or otherwise permanently engraved into the metal of the steel marker. A person shall not build permanent structures over an onsite burial without the appropriate division district office's written approval. A person shall not remove an onsite burial marker without the division's written permission.

Logos Operating has requested a variance for the visible marker that should 'extend at least four feet above mean ground level'. Logos operating plans to use a steel plate at least 12" x 12", flush with ground level and contain the same information as the four foot riser would have as per the rule. Upon the abandonment of all the wells on the pad, the plate will be removed and replaced with a four foot tall riser containing the same information as per the rule.



New Mexico Office of the State Engineer

Water Column/Average Depth to Water

(A CLW##### in the
POD suffix indicates the
POD has been replaced
& no longer serves a
water right file.)

(R=POD has
been replaced,
O=orphaned,
C=the file is
closed)

(quarters are 1=NW 2=NE 3=SW 4=SE)

(quarters are smallest to largest)

(NAD83 UTM in meters)

(In feet)

POD Number	POD Sub-Code	basin	County	Q 64	Q 16	Q 4	Sec	Tws	Rng	X	Y	Distance	Depth Well	Depth Water	Water Column
<u>SJ 03275</u>			SJ	4	2	2	25	25N	08W	264502	4028868*	3968	57	18	39
<u>SJ 00681 39</u>			RA	4	2	2	18	24N	07W	265824	4022392*	4431	1825	500	1325
<u>SJ 01131</u>			RA		1	4	19	24N	07W	265313	4020131*	5941	1700	400	1300
<u>SJ 00681 37</u>			RA	2	1	1	15	24N	07W	269408	4022501*	7427	190		
<u>SJ 01335</u>			RA			1	31	24N	07W	264672	4017581*	8097	185		
<u>SJ 00870</u>			SJ		2	3	36	24N	08W	263248	4017010*	8418	250		
<u>SJ 00960 S</u>			SJ	3	1	3	36	24N	08W	262744	4016920*	8482			
<u>SJ 00960 S-2</u>			SJ	3	2	3	36	24N	08W	263147	4016909*	8511			
<u>SJ 00960 S-3</u>			SJ	2	4	3	36	24N	08W	263336	4016707*	8727			
<u>RG 26087</u>		TA								269459	4019931	8795	440		
<u>SJ 00960</u>			SJ	3	3	3	36	24N	08W	262730	4016518*	8884			
<u>SJ 02686</u>			SJ	3	4	2	32	24N	08W	257502	4017472*	9410	690	690	0
<u>SJ 01304</u>			SJ		2	01	23N	08W		263823	4015987*	9497	100		
<u>SJ 01334</u>			SJ		2	01	23N	08W		263823	4015987*	9497	90	40	50

Average Depth to Water: **329 feet**

Minimum Depth: **18 feet**

Maximum Depth: **690 feet**

Record Count: 14

UTMNAD83 Radius Search (in meters):

Easting (X): 262570

Northing (Y): 4025401

Radius: 10000

*UTM location was derived from PLSS - see Help

The data is furnished by the NMOSE/ISC and is accepted by the recipient with the expressed understanding that the OSE/ISC make no warranties, expressed or implied, concerning the accuracy, completeness, reliability, usability, or suitability for any particular purpose of the data.

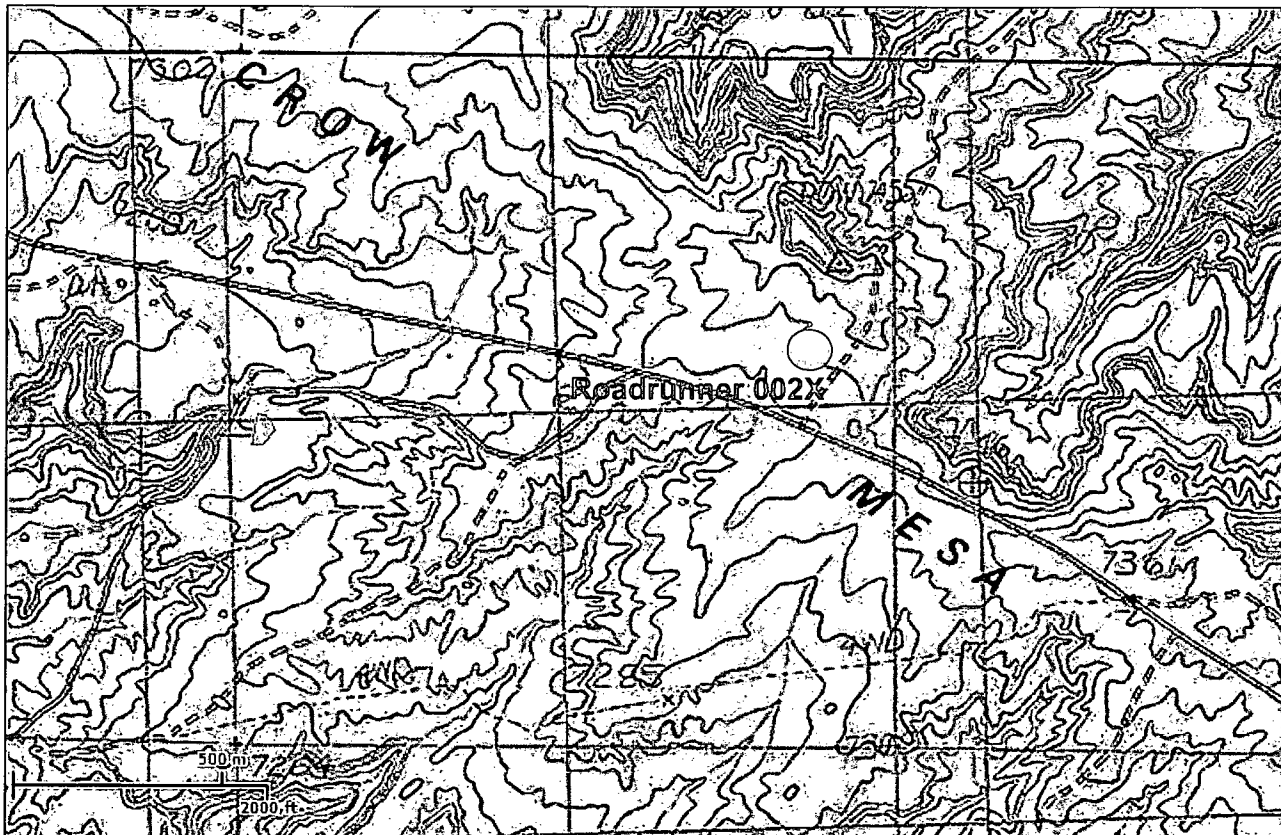


U.S. Fish and Wildlife Service

National Wetlands Inventory

Roadrunner 002X

Oct 1, 2013



Wetlands

- ☐ Freshwater Emergent
- ☐ Freshwater Forested/Shrub
- ☐ Estuarine and Marine Deepwater
- ☐ Estuarine and Marine
- ☐ Freshwater Pond
- ☒ Lake
- ☐ Riverine
- ☐ Other

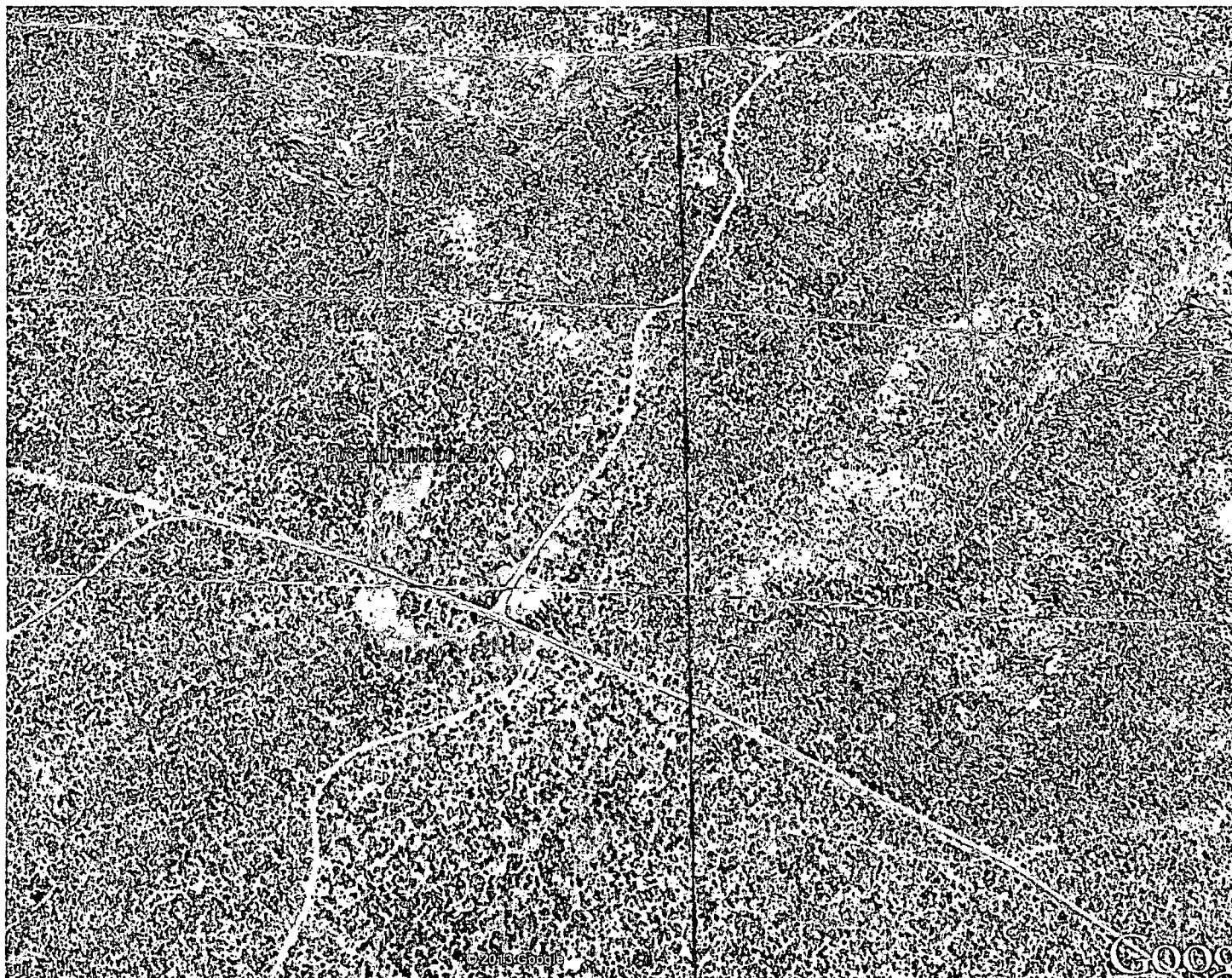
This map is for general reference only. The US Fish and Wildlife Service is not responsible for the accuracy or currentness of the base data shown on this map. All wetlands related data should be used in accordance with the layer metadata found on the Wetlands Mapper web site.

User Remarks:

UL H, Section 2, Township 24N Range 08W

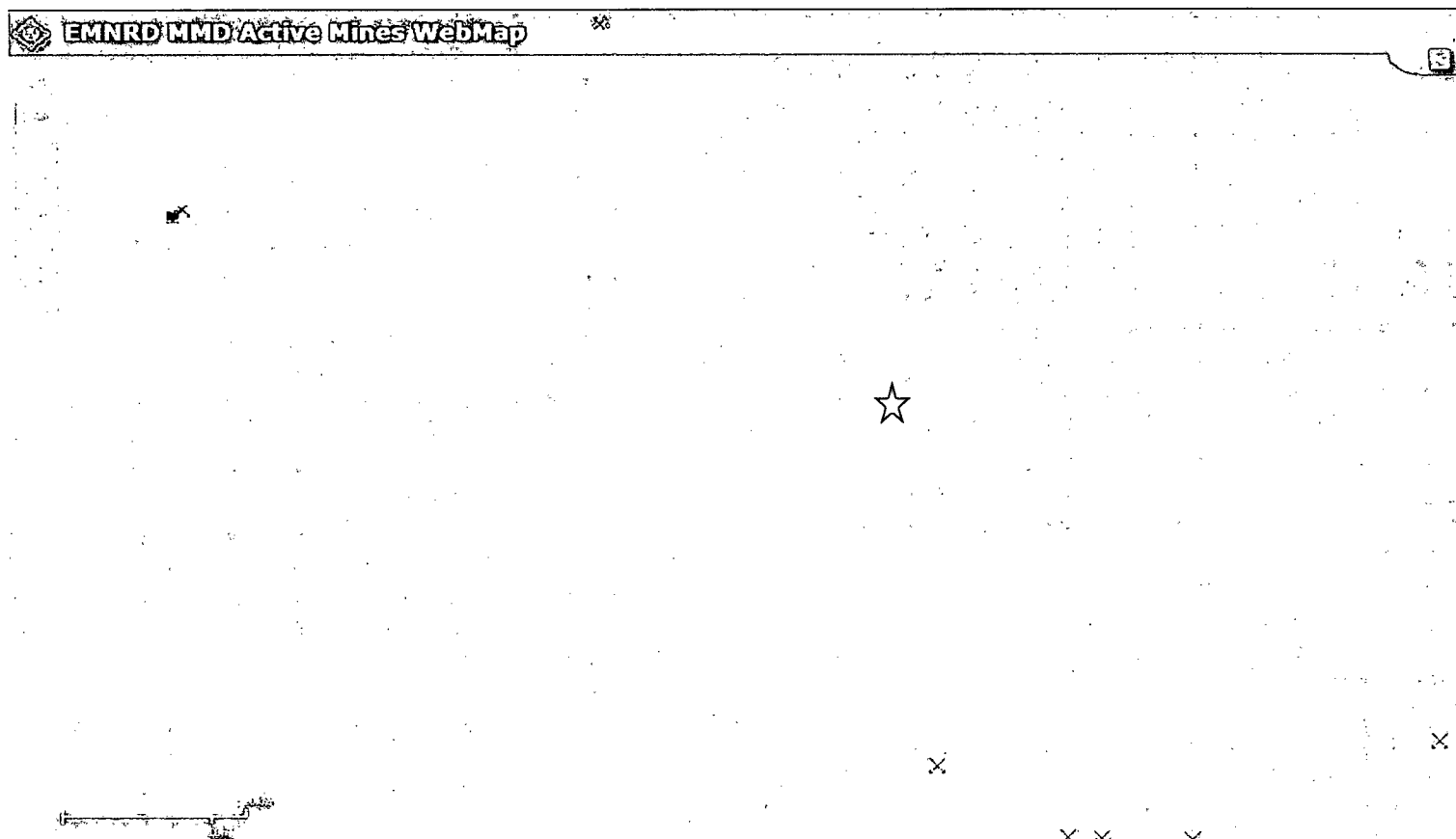
ROADRUNNER 2X – AERIAL MAP
10/1/2013

H SEC 2 T24N R08W



MINES, MILLS, AND QUARRIES MAP

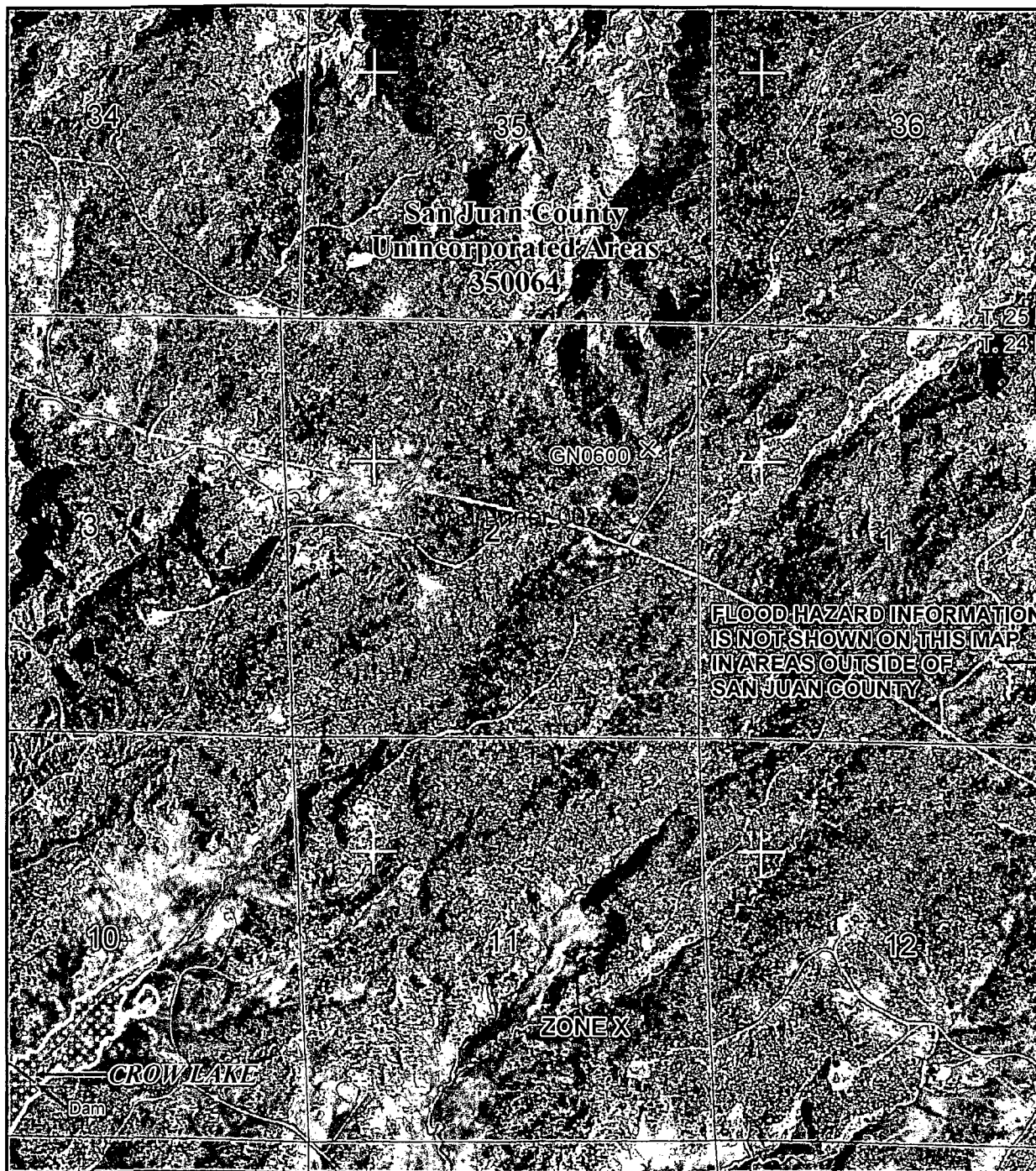
ROADRUNNER 2X



Roadrunner 002X – Latitude 36.343814N / Longitude 107.644539W (NAD83)

There are no mines, mills, or quarries within any close distance.

Data source: New Mexico Active Mines Map



MAP SCALE 1" = 2000'

0 2000 4000 FEET

0 600 1200 METERS

NFIP

NATIONAL FLOOD INSURANCE PROGRAM

PANEL 2100F

FIRM

FLOOD INSURANCE RATE MAP

SAN JUAN COUNTY,
NEW MEXICO
AND INCORPORATED AREAS

PANEL 2100 OF 2750

(SEE MAP INDEX FOR FIRM PANEL LAYOUT)

CONTAINS:

<u>COMMUNITY</u>	<u>NUMBER</u>	<u>PANEL</u>	<u>SUFFIX</u>
SAN JUAN COUNTY	350064	2100	F

Notice to User: The Map Number shown below should be used when placing map orders; the Community Number shown above should be used on insurance applications for the subject community.



MAP NUMBER
35045C2100F

EFFECTIVE DATE
AUGUST 5, 2010

Federal Emergency Management Agency

This is an official copy of a portion of the above referenced flood map. It was extracted using F-MIT On-Line. This map does not reflect changes or amendments which may have been made subsequent to the date on the title block. For the latest product information about National Flood Insurance Program flood maps check the FEMA Flood Map Store at www.msc.fema.gov

Logos Operating, LLC
Roadrunner 2X
Temporary Reserve Pit Application
Siting Criteria

1. According to the iWaters Database from the State Engineers Office, the closest known water well is 3968 meters (2.5 miles) away in the NE/NE quarter of Section 25, Township 25N Range 08W. The depth of the well is 57 feet and depth to ground water is 18 feet. It should be noted that this well is on the valley floor of the canyon, near a water source. On the contrary, the proposed well is on the flat top of the canyon. The next water-bearing well is 4431 meters (2.8 miles) away in the NE/NE quarter of Section 18 of T24N R07W. The depth of the well is 1825 feet and depth to ground water is 500 feet. The average depth to water is 329 feet and the minimum depth is 18 feet (see attached iWaters data).
2. The elevation of the subject well is 7368' and the elevation of the closest water well (SJ 03275) is approximately 6600', ground water depth for the subject will be approximately 786'. The elevation of the next closest water well (SJ 00681039) is approximately 7200', ground water depth for the subject well will be approximately 668'. Ground water depth for the subject well is greater than 100' from the bottom of the temporary pit.
3. As shown on the attached topographic map and aerial photos, there are no continuously flowing watercourses within 100' of the well, or any significant watercourses, lakebeds, sinkholes or playa lakes within 200' of the well.
4. There are no permanent residences, schools, hospitals, institutions, or churches within 300' of the well.
5. There are no domestic water wells or springs within 200' of the well. See iWaters Database printout.
6. The well is not located within any municipal boundaries.
7. The well is not within 100' of any wetlands. See attached topographic map and aerial photos.
8. There are no subsurface mines in Section 2, T24N, R08W. See attached map from the NM EMNRD Mining and Mineral Division.
9. The Roadrunner 2X is not located in an "unstable" area. The location is not over a mine and is not on the side of a hill. The location of the excavated pit material will not be located within 100' of a continuously flowing watercourse or 200' from any other watercourse.
10. The attached FEMA map for the subject well indicates that the well is not on a 100-year floodplain.
11. In the event that the composite pit sample that is mixed 3:1 with native soils does not meet the requirements for onsite burial, the pit contents will be removed and disposed of at the Envirotech Land Farm #2 (NMOCD Permit #11).

Hydro geological report for Roadrunner 2X

Regional Hydro geological context:

The Roadrunner 002X is located on state land in San Juan County, New Mexico. The well location is in the SE/NE quarter of Section 2 in Township 24N, Range 08W. The well is located atop Crow Mesa in the Chaco Canyon region. The regional terrain is comprised of a series of canyons. The area contains drainage basins in the flat valley regions of the canyon. The well is not near any floodplains or protected wetlands.

A records search of the New Mexico Office of the State Engineer iWaters database indicates that the closest known water well is 3968 meters away in the NE/NE quarter of Section 25, Township 25N Range 08W. The depth of the well is 57 feet and depth to ground water is 18 feet. It should be noted that this well is on the valley floor of the canyon, near a water source. On the contrary, the proposed well is on the flat top of the canyon. The next water-bearing well is 4431 meters away in Section 18 of T24N R07W. The depth of the well is 1825 feet and depth to ground water is 500 feet. The average depth to water is 329 feet and the minimum depth is 18 feet (see attached iWaters data).

Geologic maps of the area indicate that the surface is comprised of the Cuba Mesa Member and Regina Member of the San Jose Formation. The canyon walls are composed of the Cuba Mesa Member, which is a coarse-grained conglomerate sandstone. The thickness can be up to 245 meters. The tops of the canyons are composed of the Regina Member. It is composed of shale, siltstone, mudstone, and silty sandstone. It can be up to 490 meters thick.

DISTRICT I
1825 N. French Dr., Hobbs, N.M. 88240
Phone: (575) 393-8161 Fax: (575) 393-0720

DISTRICT II
811 S. First St., Artesia, N.M. 88210
Phone: (575) 748-1283 Fax: (575) 748-9720

DISTRICT III
1000 Rio Brazos Rd., Aztec, N.M. 87410
Phone: (505) 334-8178 Fax: (505) 334-8170

DISTRICT IV
1220 S. St. Francis Dr., Santa Fe, NM 87505
Phone: (505) 470-3460 Fax: (505) 476-3462

State of New Mexico
Energy, Minerals & Natural Resources Department
OIL CONSERVATION DIVISION
1220 South St. Francis Dr.
Santa Fe, NM 87505

Form C-102
Revised August 1, 2011
Submit one copy to appropriate
District Office

☐ AMENDED REPORT

WELL LOCATION AND ACREAGE DEDICATION PLAT

*API Number		*Pool Code 19859	*Pool Name DUFERS POINT GALLUP DAKOTA	
*Property Code	*Property Name ROAD-RUNNER Roadrunner		*Well Number 2X	
*OGRID No. 289408	*Operator Name LOGOS OPERATING, LLC		*Elevation 7368'	

10 Surface Location

UL or lot no.	Section	Township	Range	Lot Idn	Feet from the	North/South line	Feet from the	East/West line	County
H	2	24-N	8-W		2340	NORTH	713	EAST	SAN JUAN

11 Bottom Hole Location If Different From Surface

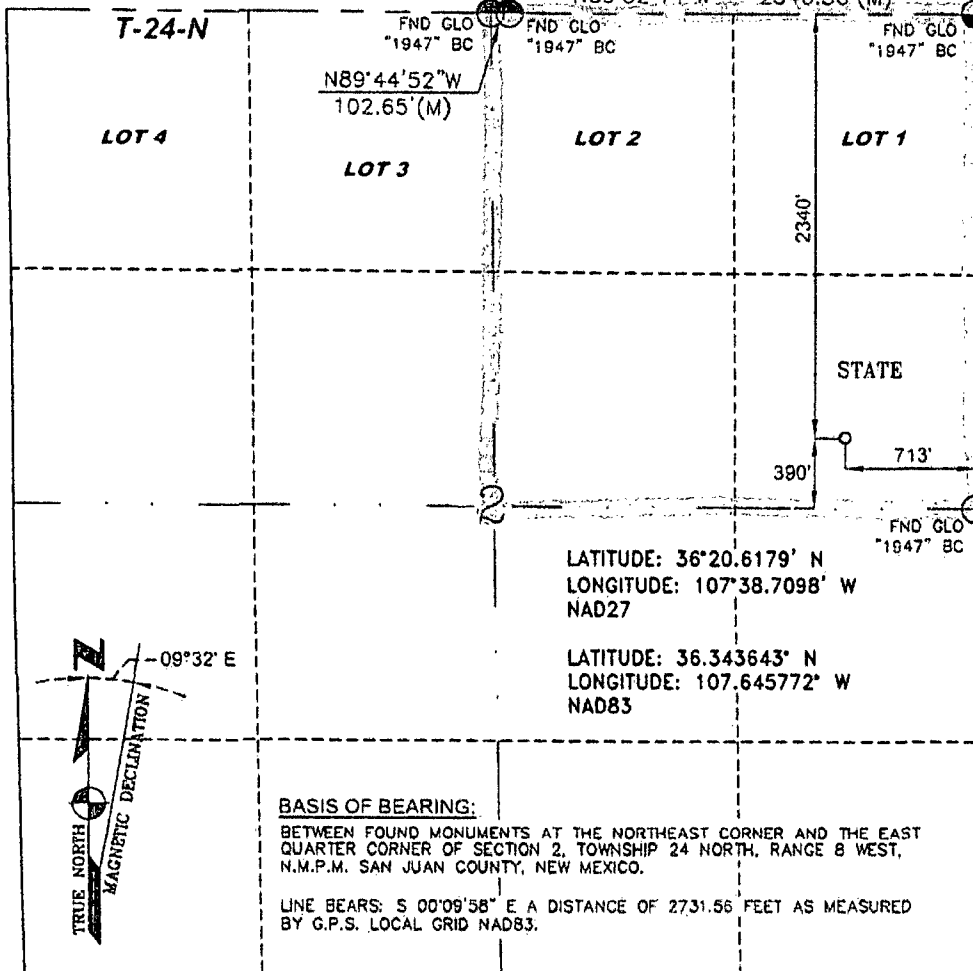
UL or lot no.	Section	Township	Range	Lot Idn	Feet from the	North/South line	Feet from the	East/West line	County
*Dedicated Acres 168.60					*Joint or Infill		*Consolidation Code		*Order No.

NO ALLOWABLE WILL BE ASSIGNED TO THIS COMPLETION UNTIL ALL INTERESTS HAVE BEEN CONSOLIDATED
OR A NON-STANDARD UNIT HAS BEEN APPROVED BY THE DIVISION

18

T-25-N

T-24-N



17 OPERATOR CERTIFICATION

I hereby certify that the information contained herein is true and complete to the best of my knowledge and belief, and that this organization either owns a working interest or unleased mineral interest in the land including the proposed bottom hole location or has a right to drill this well at this location pursuant to a contract with an owner of such a mineral or a working interest, or to a voluntary pooling agreement or a compulsory pooling order heretofore entered by the division.

Signature *Austin Akers* Date *10/10/13*
Printed Name *Austin Akers*
E-mail Address *aa.akers@logosresourcesllc.com*

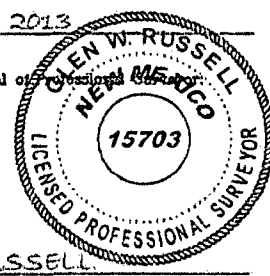
18 SURVEYOR CERTIFICATION

I hereby certify that the well location shown on this plat was plotted from field notes of actual surveys made by me or under my supervision, and that the same is true and correct to the best of my belief.

OCTOBER 9, 2013

Date of Survey

Signature and Seal of



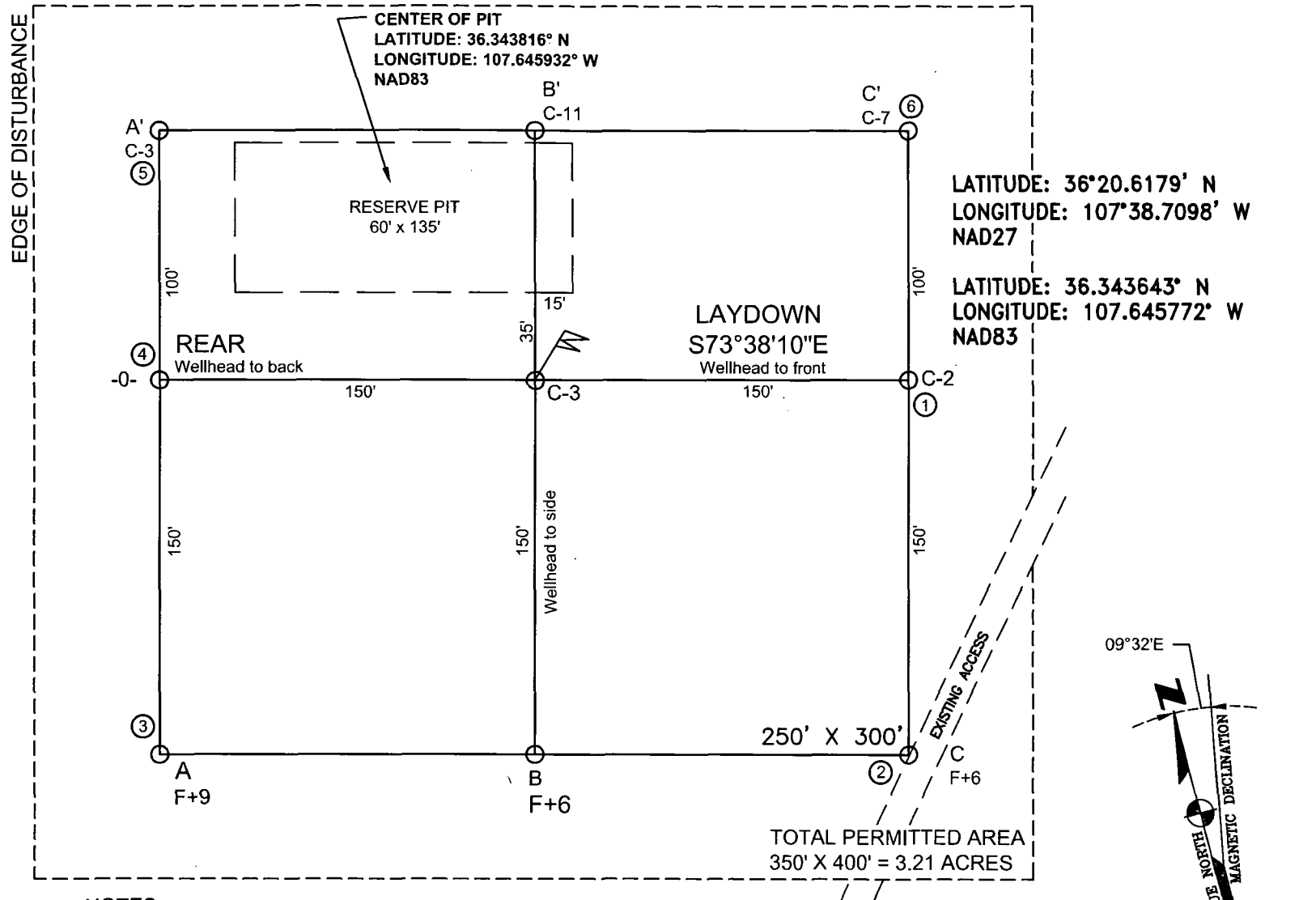
GLEN W. RUSSELL

Certificate Number

15703

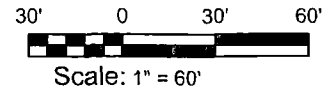
LOGOS OPERATING, LLC

ROADRUNNER #2X, 2340' FNL & 713' FEL
SECTION 2, T-24-N, R-8-W, NMPM, SAN JUAN COUNTY, NM
GROUND ELEVATION: 7368', DATE: OCTOBER 2, 2013



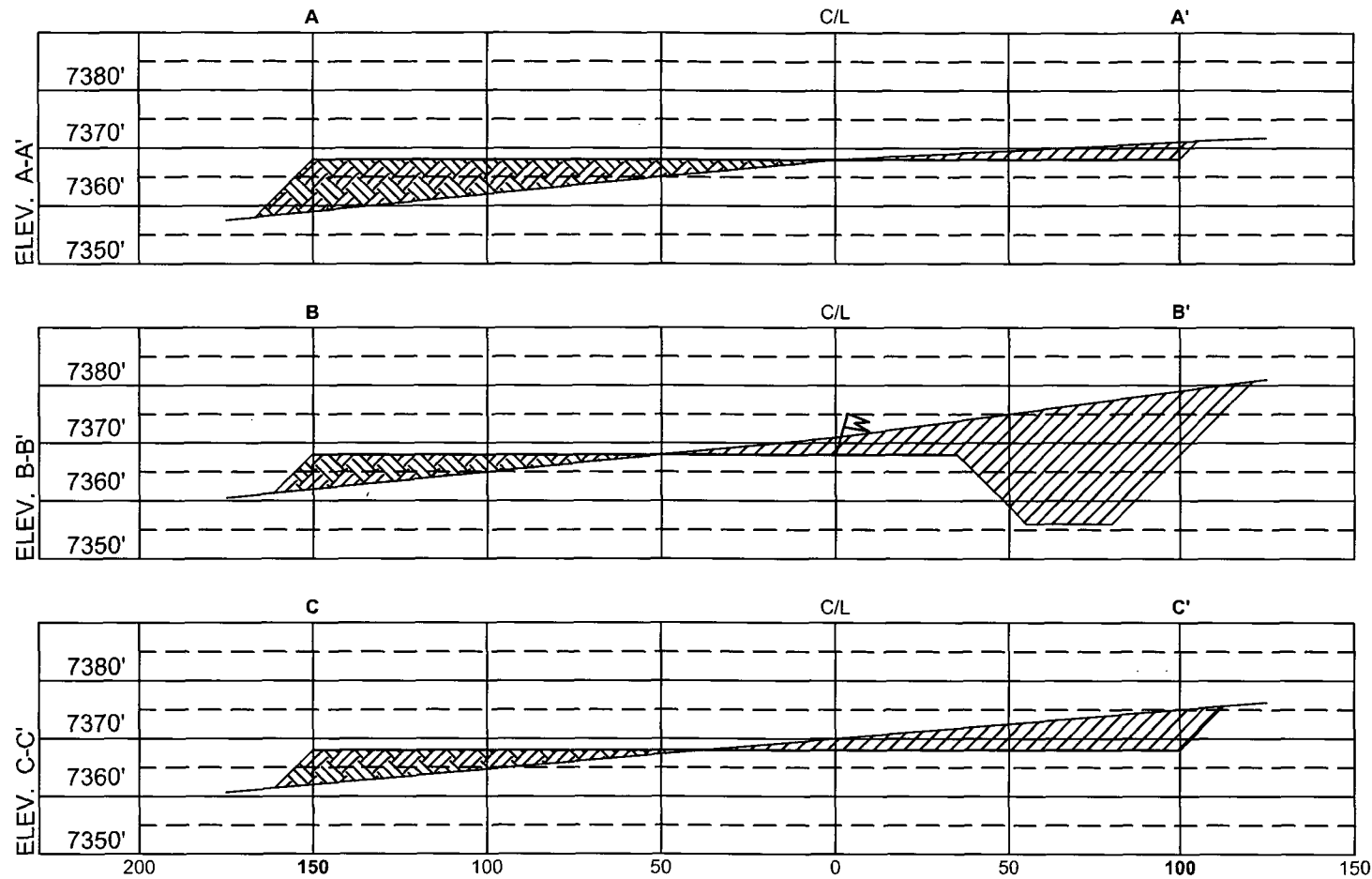
NOTES:

1. VECTOR SURVEYS IS NOT LIABLE FOR UNDERGROUND UTILITIES OR PIPELINES. CONTRACTOR SHOULD CALL ONE-CALL FOR LOCATION OF ANY MARKED OR UNMARKED BURIED PIPELINES OR CABLES ON WELL PAD AND OR ACCESS ROAD AT LEAST TWO (2) WORKING DAYS PRIOR TO CONSTRUCTION.
2. RESERVE PIT DIKE: TO BE 8' ABOVE DEEP SIDE (OVERFLOW - 3' WIDE AND 1' ABOVE SHALLOW SIDE).



LOGOS OPERATING, LLC

ROADRUNNER #2X, 2340' FNL & 713' FEL
SECTION 2, T-24-N, R-8-W, NMPM, SAN JUAN COUNTY, NM
GROUND ELEVATION: 7368', DATE: OCTOBER 2, 2013



HORIZ. SCALE: 1" = 50'
VERT. SCALE: 1" = 30'

NOTE:

VECTOR SURVEYS IS NOT LIABLE FOR UNDERGROUND UTILITIES OR PIPELINES. CONTRACTOR SHOULD CALL ONE-CALL FOR LOCATION OF ANY MARKED OR UNMARKED BURIED PIPELINES OR CABLES ON WELL PAD AND OR ACCESS ROAD AT LEAST TWO (2) WORKING DAYS PRIOR TO CONSTRUCTION.

Logos Operating, LLC
San Juan Basin
Temporary Pit Design and Construction Plan

In accordance with Rule 19 15 17 the following information describes the design and construction for temporary pits on Logos Operating Company's locations; this is Logos Operating's standard procedure for all temporary pits. A separate plan will be submitted for any temporary pit that does not conform to this plan.

General Plan

- 1 Logos Operating will design and construct a temporary pit to contain liquids and solids and prevent contamination of fresh water and protect public health and environment
- 2 Prior to constructing the pit, topsoil will be stockpiled in the construction zone for later use in restoration
- 3 Logos Operating will post a well sign, not less than 12' by 14', on the well site prior to construction of the temporary pit. The sign will list the operator on record as the operator, the location of the well by unit letter, section, township range, and emergency telephone numbers
- 4 Logos Operating shall construct all new fences utilizing 48' steel mesh field-fence (hogwire) on the bottom with a single strand of barbed wire on top. T-posts shall be installed every 12 feet and corners shall be anchored utilizing a secondary T-post. Temporary pits will be fenced at all times excluding drilling or overwork operations, when the front side of the fence will be temporarily removed for operational purposes
- 5 Logos Operating shall construct the temporary pit so that the foundation and interior slopes are firm and free of rocks, debris, sharp edges or irregularities to prevent liner failure
- 6 Logos Operating shall construct the pit so that the slopes are no steeper than two horizontal feet to 1 vertical foot
- 7 Pit walls will be walked down by a crawler type tractor following construction
- 8 All temporary pits will be lined with a 20-mil, string reinforced, LLDPE liner, complying with EPA SW-846 method 9090A requirements
- 9 Geotextile will be installed beneath the liner when rocks, debris, sharp edges or irregularities cannot be avoided
- 10 All liners will be anchored in the bottom of a compacted earth-filled trench at least 18 inches deep
- 11 Logos Operating will minimize liner seams and orient them up and down, not across a slope. Factory seams will be used whenever possible. Logos Operating will ensure all field seams are welded by qualified personnel. Field seams will be overlapped four to six inches and will be oriented parallel to the line of maximum slope. Logos Operating will minimize the number of field seams in corners and irregularly shaped areas
- 12 The liner shall be protected from any fluid force or mechanical damage through the use of mud pit slides, or a manifold system
- 13 The pit shall be protected from run-off by constructing and maintaining diversion ditched around the location or around the perimeter of the pit in some cases
- 14 The volume of the pit shall not exceed 10 acre-feet, including freeboard
- 15 Temporary blow pits will be constructed to allow gravity flow to discharge into lined drill pit
- 16 The lower half of the blow pit (nearest lined pit) will be lined with the same 20 mil liner. The upper half of the blow pit will remain unlined as allowed in Rule 19 15 17 11 F 11
- 17 Logos Operating will not allow freestanding liquids to remain on the unlined portion of temporary blow pit

Logos Operating, LLC
San Juan Basin
Temporary Pit Maintenance and Operating Plan

In accordance with Rule 19 15 17 the following information described the operation and maintenance of temporary pits on Logos Operating Company locations. This is Logos Operating's standard procedure for all temporary pits. A separate plan will be submitted for any temporary pit that does not conform to this plan.

General Plan

- 1 Logos Operating will operate and maintain a temporary pit to contain liquids and solids and prevent contamination of fresh water and protect public health and environment
- 2 Logos Operating will conserve drilling fluids by transferring liquids to pits ahead of the rigs whenever possible. All other drilling fluids will be disposed at Basin Disposal, Inc. Permit # NM-01-005
- 3 Logos Operating will not discharge or store any hazardous waste in any temporary pit
- 4 If any pit liner's integrity is compromised or if any penetration of the liner occurs above the liquid's surface, then Logos Operating shall notify the Aztec Division office by phone or email within 48 hours of the discovery and repair the damage or replace the liner
- 5 If a leak develops below the liquid's level, Logos Operating shall remove all liquids above the damaged liner within 48 hours and repair the damage or replace the liner. Logos Operating shall notify the Aztec Division office by phone or email within 48 hours of the discovery for leaks less than 25 barrels. Logos Operating shall notify the Aztec division office as required pursuant to Subsection B of 19 15 3 116 NMAC shall be reported within twenty-four (24) hours of discovery of leaks greater than 25 barrels. In addition, immediate verbal notification pursuant to Subsection B, Paragraph (1) and Subparagraph (d) of 19 15 3 116 NMAC shall be reported to the division's Environmental Bureau Chief
- 6 The liner shall be protected from any fluid force or mechanical damage through the use of mud pit slides, or manifold system
- 7 The pit shall be protected from run-off by constructing and maintaining diversion ditches around the location or around the perimeter of the pit in some cases
- 8 Logos Operating shall immediately remove any visible layer or oil from the surface of temporary pit after cessation of a drilling or workover operation. Oil absorbent booms will be utilized to contain and remove oil from the pit's surface. An oil absorbent boom will be stored on-site until closure of pit
- 9 Only fluids generated during the drilling or workover process may be discharged into a temporary pit
- 10 Logos Operating will maintain the temporary pit free of miscellaneous solid waste or debris
- 11 During drilling or workover operations, Logos Operating will inspect the temporary pit at least once daily to ensure compliance with this plan. Inspections will be logged in the IADC reports. Logos Operating will file this log with the Aztec Division office upon closure of the pit
- 12 After drilling or workover operations, Logos Operating will inspect the temporary pit weekly so long as liquids remain in the temporary pit. A log of the inspections will be stored at Logos Operating's office electronically and will be filed with the Aztec Division office upon closure of the pit
- 13 Logos Operating shall maintain at least two feet of freeboard for a temporary pit
- 14 Logos Operating shall remove all free liquids from a temporary pit within 60 days from the date the operator releases the drilling or workover rig
- 15 Logos Operating shall remove all free liquids from cavitations put within 48 hours after completing cavitations. Logos Operating may request additional time to remove liquids from Aztec Division office if it is not feasible to remove liquids within 48 hours

**Logos Operating, LLC
San Juan Basin
Temporary Pit Closure Plan**

In accordance with Rule 19.15.17.13 NMAC the following information describes the closure requirements of temporary pits on Logos Operating Company's locations. This is Logos Operating's standard procedure for all temporary pits. A Separate plan will be submitted for any temporary pit that does not conform to this plan.

All closure activities will include proper documentation and be available for review upon request and will be submitted to OCD within 60 days of the pit closure. Closure report will be filed on C-144 and incorporated the following:

- Detail on Capping and Covering, where applicable
- Plot Plan (Pit diagram)
- Inspection reports
- Sampling Results
- C-105
- Copy of Deed Notice will be filed with County Clerk

General Plan

- 1 All free standing liquids will be removed at the start of the pit closure process from the pit and disposed of in a division-approved facility or recycle, reuse or reclaim the liquids in a manner that the appropriate division district office approves
- 2 The preferred method of closure for all temporary pits will be on-site burial, assuming that all criteria listed in sub-section (D) of 19.15.17.13 are met
- 3 The surface owner shall be notified of Logos Operating's proposed closure plan using a means that provides proof of notice i.e., certified mail, return receipt requested
- 4 Within 6 months of the Rig Off status occurring Logos Operating will ensure that temporary pits are closed, re-contoured, and reseeded
- 5 Notice of Closure will be given to the Aztec Division office between 72 hours and one week of closure via email, or verbally, The notification of closure will include the following:
 - i. Operator's name
 - ii. Location by Unit Letter, Section, Township, and Range. Well name and API Number
- 6 Pit contents shall be mixed with non-waste containing, earthen material in order to achieve the solidification process. The solidification process will be accomplished using a combination of natural drying and mechanically mixing. Pit contents will be mixed with non-waste, earthen material to a consistency that is deemed a safe and stable. The mixing ratio shall not exceed 3 parts clean soil to 1 part pit contents
- 7 A five point composite sample will be taken of the pit using sampling tools and all samples tested per 19.15.17.13 (D)(5). In the event that the criteria are not met, all contents will be handled per 19.15.17.13 (D)(7) i.e., Dig and haul

Components	Tests Method	Limit (mg/Kg)
Benzene	EPA SW-846 8021B or 8015M	10
BTEX	EPA SW-846 8021B or 8260B	50
TPH	EPA SW-846 418.1	2500
GRO/DRO	EPA SW-846 8015M	1000
Chlorides	EPA 300.0	80,000

- 8 Upon completion of solidification and testing, Logos will fold the outer edges of the trench liner to overlap the waste material in the pit area, then install a geomembrane cover over the waste material in the pit to prevent collections of infiltration water after the soil cover is in place; geomembrane a 20-mil, string reinforced, LLDPE liner, or equivalent complying with EPA SW-846 method 9090A requirements.
- 9 Pit area will be backfilled with compacted, non-waste containing, earthen material with chloride concentrations less than 600 mg/kg as analyzed by EPA Method 300.0. A minimum of four feet of cover shall be achieved and the cover shall include one foot of suitable material to establish vegetation at the site, or the background thickness of topsoil, whichever is greater
- 10 Re-contouring of location will match fit, shape, line, form and texture of the surrounding area. Re-shaping will include drainage control, prevent ponding, and prevent erosion. Natural drainages will be unimpeded and water bars and/or silt traps will be placed in areas where needed to prevent erosion on a large scale. Final re-contour shall have a uniform appearance with smooth surface, fitting the natural landscape
- 11 Notification will be sent to OCD when the reclaimed area is seeded
- 12 Logos Operating shall seed the disturbed areas the first growing season after the operator closes the pit. Seeding will be accomplished via drilling on the contour whenever practical or by other division-approved methods. BLM or Forest Service stipulated seed mixed will be used on federal lands. Vegetative cover will be established that will reflect a life-form ratio of plus or minus fifty percent (50%) of pre-disturbance levels and will equal seventy (70%) of the native perennial vegetative cover (un-impacted) consisting of at least three native plant species, including at least one grass, but not including noxious weeds, and maintain that cover thorough two successive growing seasons. Repeat seeding or planting will be continued until successful vegetative growth occurs
- 13 The temporary pit will be located with a steel marker, no less than four inches in diameter, cemented in a hole three feet deep in the center of the onsite burial upon the abandonment of all the wells on the pad. The marker will be a four foot tall riser with the operator's information at the time of all wells on the pad are abandoned. The operator's information will include the following: Operator Name, Lease Name, Well Name and Number, unit Number, Section, Township, Range and an indicator that the marker is an onsite burial location
 - a. If the well goes into production, then an alternate interim marking system will be used to allow for safer and more efficient operations. A minimum 4" O.D. steel pipe will be set at least 36" deep at the center of the pit. A threaded collar will be on the top of the pipe. A minimum 12" x 12" steel plate will be welded atop the threaded collar. Top of the plate will be flush with ground level. The steel plate will contain the Operator Name, Lease Name, Well Number, and location information including unit letter, section, township and range, and that the marker designates an onsite burial location. This information will be welded, stamped or otherwise permanently engraved into the metal of the plate. Upon the abandonment of all the wells on the pad, the plate will be removed and replaced with a four foot tall riser containing the same information as described for the steel plate.