

Chaco 2307-12E #168H

LYBROOK GALLUP Horizontal

(page 1)

Spud: 5/9/13

Completed: 7/30/13

OIL CONS. DIV DIST. 3

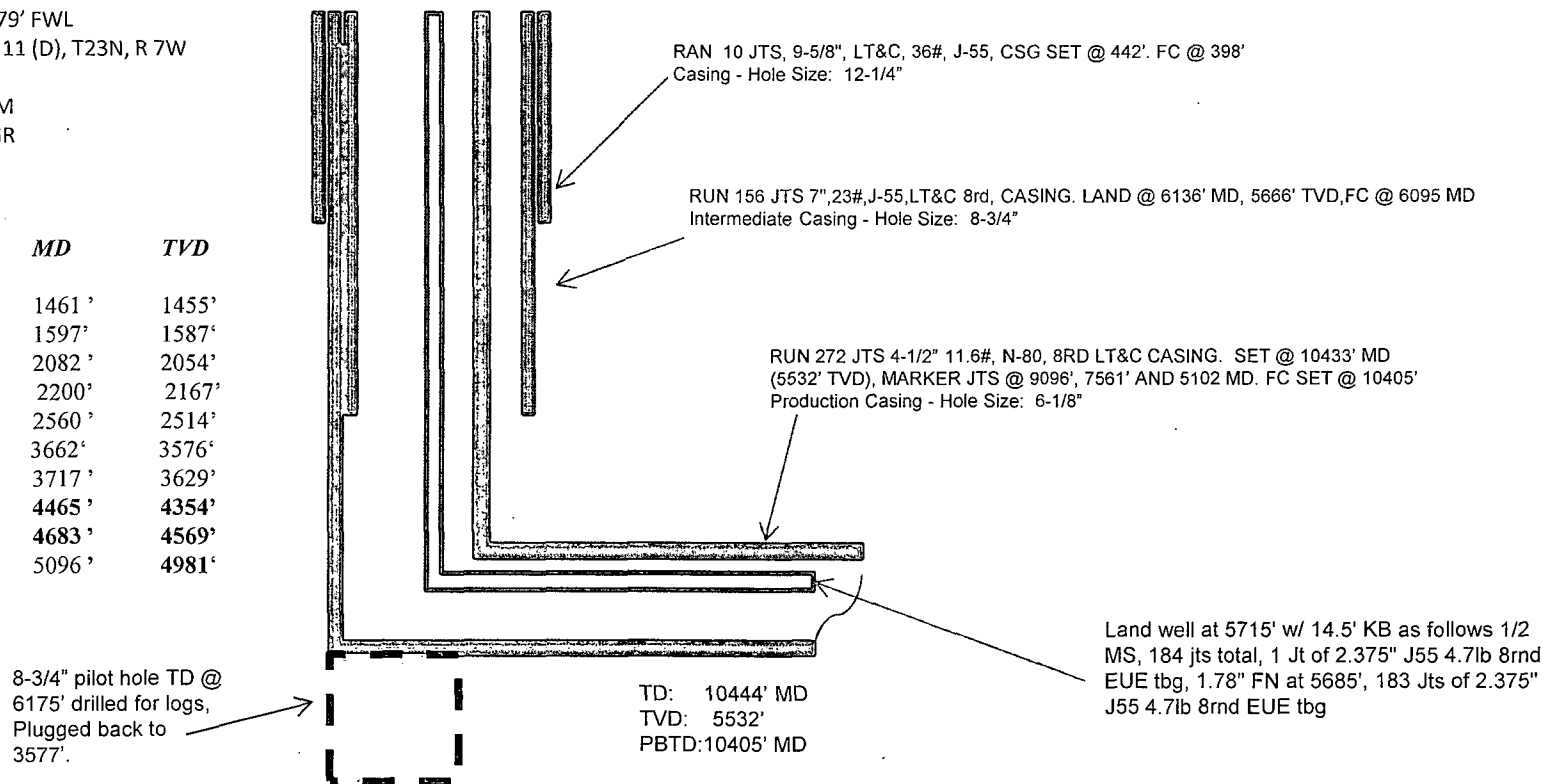
AUG 07 2013

Surface Location: 1492' FNL & 303' FWL
SW/4 NW/4 Section 12 (E), T23N, R7W

BHL: 563' FNL & 379' FWL
NE/4 NE/4 Section 11 (D), T23N, R 7W

RIO ARRIBA Co., NM
Elevation: 7036' GR
API: 30-039-31173

<i>Tops</i>	<i>MD</i>	<i>TVD</i>
Ojo Alamo	1461'	1455'
Kirtland	1597'	1587'
Pictured Cliffs	2082'	2054'
Lewis	2200'	2167'
Chacra	2560'	2514'
Cliff House	3662'	3576'
Menefee	3717'	3629'
Point Lookout	4465'	4354'
Mancos	4683'	4569'
Gallup	5096'	4981'



HOLE SIZE	CASING	CEMENT	VOLUME	CMT TOP
12-1/4"	9-5/8"	225 sx	298cu.ft.	Surface
8-3/4"	7"	1035 sx	1440 cu.ft.	Surface
6-1/8"	4-1/2"	420 sx	571cu.ft.	3750' TOC

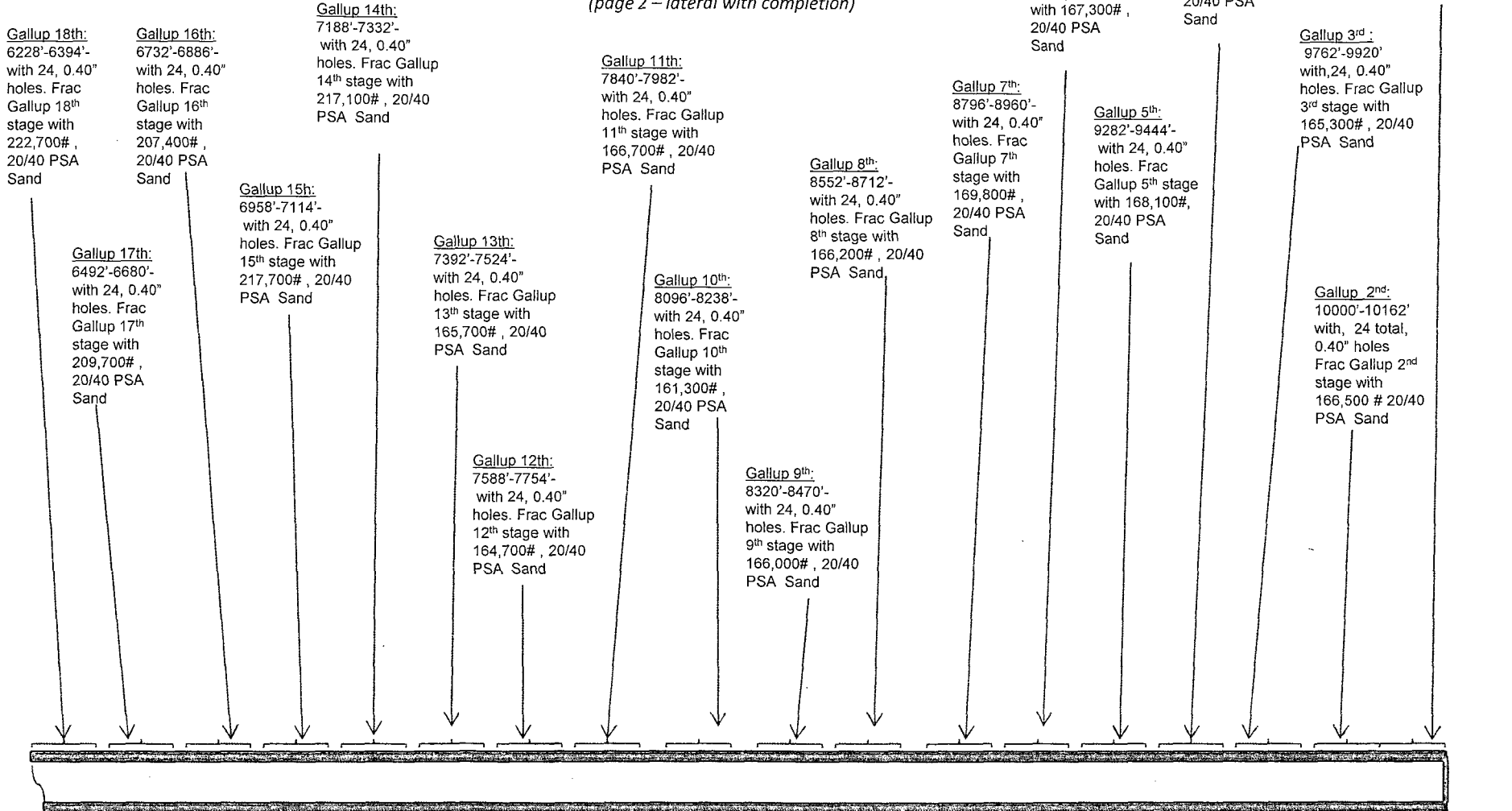
Lg 8/1/13

AV

Chaco 2307-12E #168H

LYBROOK GALLUP Horizontal

(page 2 – lateral with completion)



See page 1 for upper portion of hole