

State of New Mexico  
Energy, Minerals and Natural Resources Department

Susana Martinez  
Governor

David Martin  
Cabinet Secretary-Designate

Brett F. Woods, Ph.D.  
Deputy Cabinet Secretary

Jami Bailey, Division Director  
Oil Conservation Division



New Mexico Oil Conservation Division approval and conditions  
listed below are made in accordance with OCD Rule 19.15.7.11  
and are in addition to the actions approved by BLM on the  
following 3160-4 or 3160-5 form.

Operator Signature Date:

Application Type:

☒ **P&A**    ☐ Drilling/Casing Change    ☐ Recomplete/DHC  
☐ Location Change    ☐ Other: \_\_\_\_\_

Well information:

API WELL #	Well Name	Well #	Operator Name	Type	Stat	County	Surf_Owner	UL	Sec	Twp	N/S	Rng	W/E
30-045-26878-00-00	GALLEGOS CANYON UNIT	368	BP AMERICA PRODUCTION COMPANY	G	A	San Juan	F	C	26	28	N	12	W

Conditions of Approval:

Notify NMOCD 24hrs prior to beginning operations.

Run a current CBL to verify the TOC and submit it to the agencies for review prior to

UNITED STATES  
DEPARTMENT OF THE INTERIOR  
BUREAU OF LAND MANAGEMENTFORM APPROVED  
OMB NO. 1004-0135  
Expires: July 31, 2010**SUNDRY NOTICES AND REPORTS ON WELLS**  
*Do not use this form for proposals to drill or to re-enter an abandoned well. Use form 3160-3 (APD) for such proposals.***SUBMIT IN TRIPLICATE - Other instructions on reverse side.**

1. Type of Well <input type="checkbox"/> Oil Well <input checked="" type="checkbox"/> Gas Well <input type="checkbox"/> Other	5. Lease Serial No. NMSF078904
2. Name of Operator BP AMERICA PRODUCTION CO	6. If Indian, Allottee or Tribe Name EASTERN NAVAJO
3a. Address 200 ENERGY COURT FARMINGTON, NM 87401	

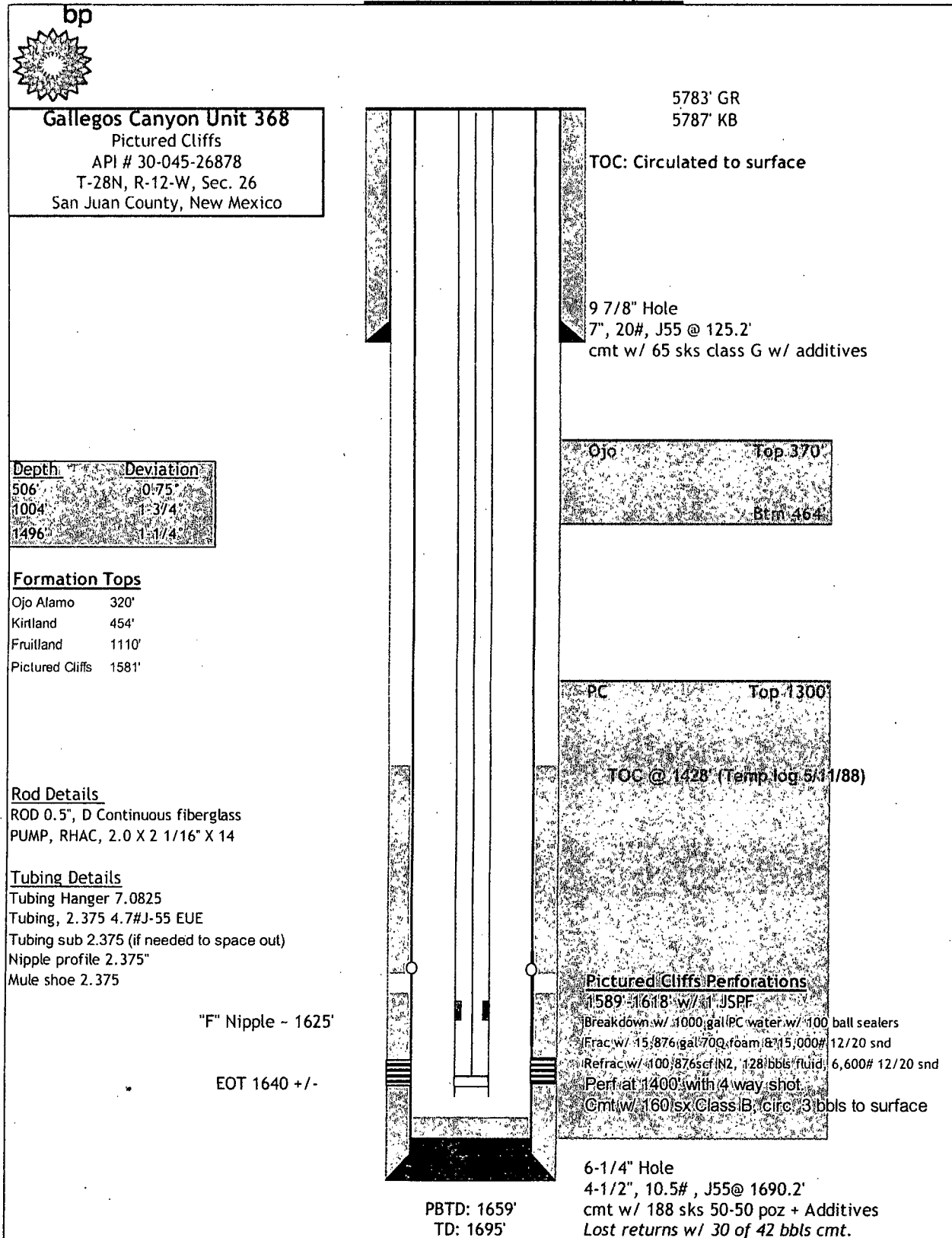
GCU 368  
30-045-26878

Unit letter Unit C - Sec 26 - T28N - R12W  
San Juan, NM  
PC  
OGRID Number: 000778  
P&A date - Oct 2013

**Basic Job Procedure:**

1. TOH with rods
2. TOH with completion.
3. RIH with 4.5" scrapper to 1600'
4. RIH with CIBP and set at 1550'
5. Balance plug to 1250' with 24 sks (4.9 bbl) neat G cement
6. PU to 1200' and reverse circulate.
7. RIH and perforate at 650' - 655'. Ensure circulation up annulus.
8. Circulate cement casing to annular with 132 sks (27.1 bbl) neat G cement total
9. Cut off well head, top off well in intermediate casing and install well marker and identification plate per regulatory requirements.
10. RD MO Location

## Current Wellbore Diagram



## Proposed Wellbore Diagram

