

District I  
1625 N. French Dr., Hobbs, NM 88240  
District II  
1301 W. Grand Avenue, Artesia, NM 88210  
District III  
1000 Rio Brazos Road, Aztec, NM 87410  
District IV  
1220 S. St. Francis Dr., Santa Fe, NM 87505

State of New Mexico  
Energy Minerals and Natural Resources

Oil Conservation Division  
1220 South St. Francis Dr.  
Santa Fe, NM 87505

Form C-141  
Revised October 10, 2003

Submit 2 Copies to appropriate  
District Office in accordance  
with Rule 116 on back  
side of form

**Release Notification and Corrective Action**

**OPERATOR**

☐ Initial Report ☒ Final Report

Name of Company: XTO Energy, Inc.	Contact: Logan Hixon	
Address: 382 Road 3100, Aztec, New Mexico 87410	Telephone No.: (505) 333-3683	
Facility Name: EH Pipkin #9 (30-045-06957)	Facility Type: Gas Well (Dakota)	
Surface Owner: Federal Land	Mineral Owner:	Lease No.: NMSF-078019

**LOCATION OF RELEASE**

Unit Letter	Section	Township	Range	Feet from the	North/South Line	Feet from the	East/West Line	County
N	35	28 N	11W	790	FSL	1735	FWL	San Juan

Latitude: N36\*.61374 Longitude: W-107\*.97557

**NATURE OF RELEASE**

Type of Release: Produced Water	Volume of Release: Unknown	Volume Recovered: None
Source of Release: BGT	Date and Hour of Occurrence: Unknown	Date and Hour of Discovery: February 27, 2013
Was Immediate Notice Given? <input type="checkbox"/> Yes <input type="checkbox"/> No <input checked="" type="checkbox"/> Not Required	If YES, To Whom? N/A	
By Whom?	Date and Hour:	RCUD MAY 9 '13
Was a Watercourse Reached? <input type="checkbox"/> Yes <input checked="" type="checkbox"/> No	If YES, Volume Impacting the Watercourse.	OIL CONS. DIV. DIST. 3
If a Watercourse was Impacted, Describe Fully.*		

**Describe Cause of Problem and Remedial Action Taken.\***

The below grade tank was taken out of service at the EH Pipkin #9 well site due to the plugging and abandoning of this well site. A composite sample was collected beneath the location of the on-site BGT, and submitted for laboratory analysis for TPH via USEPA Method 418.1 and 8015, Benzene and BTEX via USEPA Method 8021, and for total chlorides. The sample returned results below the 'Pit Rule' spill confirmation standards for Benzene, Total BTEX and the total chlorides, but above the 'pit rule' standards for TPH, confirming that a release has occurred at this location. The site was then ranked pursuant to the NMOCD Guidelines for the Remediation of Leaks, Spills and Releases. The site was ranked a 20 due to an estimated distance of less than 200 feet to drainage. This set the closure standard to 100 ppm TPH, 10 ppm benzene and 50 ppm total BTEX, or 100 ppm organic vapors.

**Describe Area Affected and Cleanup Action Taken.\***

Based on TPH results of 105 PPM via USEPA Method 8015, it has been confirmed that a release had occurred at this location. \*See attached clean-up actions taken.

I hereby certify that the information given above is true and complete to the best of my knowledge and understand that pursuant to NMOCD rules and regulations all operators are required to report and/or file certain release notifications and perform corrective actions for releases which may endanger public health or the environment. The acceptance of a C-141 report by the NMOCD marked as "Final Report" does not relieve the operator of liability should their operations have failed to adequately investigate and remediate contamination that pose a threat to ground water, surface water, human health or the environment. In addition, NMOCD acceptance of a C-141 report does not relieve the operator of responsibility for compliance with any other federal, state, or local laws and/or regulations.

Signature: <i>Logan Hixon</i>	<b>OIL CONSERVATION DIVISION</b>	
Printed Name: Logan Hixon	Approved by District Supervisor: <i>Jonathan D. Kelly</i>	
Title: Environmental Technician	Approval Date: 11/8/2013	Expiration Date:
E-mail Address: Logan.Hixon@xtoenergy.com	Conditions of Approval:	Attached <input type="checkbox"/>
Date: 5-6-13	Phone: 505-333-3683	

WSK1331250718



12065 Lebanon Rd.  
Mt. Juliet, TN 37122  
(615) 758-5858  
1-800-767-5859  
Fax (615) 758-5859

Tax I.D. 62-0814289

Est. 1970

Logan Hixon  
XTO Energy - San Juan Division  
382 County Road 3100  
Aztec, NM 87410

### Report Summary

Wednesday February 27, 2013

Report Number: L621771

Samples Received: 02/23/13

Client Project:

Description: EH Pipkin 9

The analytical results in this report are based upon information supplied by you, the client, and are for your exclusive use. If you have any questions regarding this data package, please do not hesitate to call.

Entire Report Reviewed By:

*Daphne R. Richards*

Daphne Richards , ESC Representative

### Laboratory Certification Numbers

A2LA - 1461-01, AIHA - 100789, AL - 40660, CA - 01157CA, CT - PH-0197,  
FL - E87487, GA - 923, IN - C-TN-01, KY - 90010, KYUST - 0016,  
NC - ENV375/DW21704/BIO041, ND - R-140, NJ - TN002, NJ NELAP - TN002,  
SC - 84004, TN - 2006, VA - 460132, WV - 233, AZ - 0612,  
MN - 047-999-395, NY - 11742, WI - 998093910, NV - TN000032011-1,  
TX - T104704245-11-3, OK - 9915, PA - 68-02979, IA Lab #364

Accreditation is only applicable to the test methods specified on each scope of accreditation held by ESC Lab Sciences.

Note: The use of the preparatory EPA Method 3511 is not approved or endorsed by the CA ELAP.

This report may not be reproduced, except in full, without written approval from ESC Lab Sciences. Where applicable, sampling conducted by ESC is performed per guidance provided in laboratory standard operating procedures: 060302, 060303, and 060304.



12065 Lebanon Rd.  
Mt. Juliet, TN 37122  
(615) 758-5858  
1-800-767-5859  
Fax (615) 758-5859

Tax I.D. 62-0814289

Est. 1970

# REPORT OF ANALYSIS

February 27, 2013

Logan Hixon  
XTO Energy - San Juan Division  
382 County Road 3100  
Aztec, NM 87410

Date Received : February 23, 2013  
Description : EH Pipkin 9

Sample ID : BGT COMPOSITE

Collected By : Logan Hixon  
Collection Date : 02/22/13 10:30

ESC Sample # : L621771-01

Site ID : EH PIPKIN 9

Project # :

Parameter	Dry Result	Det. Limit	Units	Method	Date	Dil.
Chloride	62.	11.	mg/kg	9056	02/26/13	1
Total Solids	93.4	0.100	%	2540 G-2011	02/26/13	1
Benzene	BDL	0.027	mg/kg	8021/8015	02/26/13	50
Toluene	BDL	0.27	mg/kg	8021/8015	02/26/13	50
Ethylbenzene	0.14	0.027	mg/kg	8021/8015	02/26/13	50
Total Xylene	1.0	0.080	mg/kg	8021/8015	02/26/13	50
TPH (GC/FID) Low Fraction	14.	5.4	mg/kg	GRO	02/26/13	50
Surrogate Recovery-%						
a,a,a-Trifluorotoluene(FID)	100.		% Rec.	8021/8015	02/26/13	50
a,a,a-Trifluorotoluene(PID)	101.		% Rec.	8021/8015	02/26/13	50
TPH (GC/FID) High Fraction	91.	4.3	mg/kg	3546/DRO	02/25/13	1
Surrogate recovery(%)						
o-Terphenyl	59.6		% Rec.	3546/DRO	02/25/13	1

Results listed are dry weight basis.

BDL - Below Detection Limit

Det. Limit - Practical Quantitation Limit(PQL)

Note:

This report shall not be reproduced, except in full, without the written approval from ESC.

The reported analytical results relate only to the sample submitted

Reported: 02/27/13 16:47 Printed: 02/27/13 16:48

L621771-01 (BTEXGRO) - Non-target compounds too high to run at a lower dilution.

Attachment A  
List of Analytes with QC Qualifiers

Sample Number	Work Group	Sample Type	Analyte	Run ID	Qualifier
L621771-01	WG638460	SAMP	TPH (GC/FID) Low Fraction	R2559938	J5

Attachment B  
Explanation of QC Qualifier Codes

Qualifier	Meaning
J5	The sample matrix interfered with the ability to make any accurate determination; spike value is high

Qualifier Report Information

ESC utilizes sample and result qualifiers as set forth by the EPA Contract Laboratory Program and as required by most certifying bodies including NELAC. In addition to the EPA qualifiers adopted by ESC, we have implemented ESC qualifiers to provide more information pertaining to our analytical results. Each qualifier is designated in the qualifier explanation as either EPA or ESC. Data qualifiers are intended to provide the ESC client with more detailed information concerning the potential bias of reported data. Because of the wide range of constituents and variety of matrices incorporated by most EPA methods, it is common for some compounds to fall outside of established ranges. These exceptions are evaluated and all reported data is valid and useable "unless qualified as 'R' (Rejected)."

Definitions

- Accuracy - The relationship of the observed value of a known sample to the true value of a known sample. Represented by percent recovery and relevant to samples such as: control samples, matrix spike recoveries, surrogate recoveries, etc.
- Precision - The agreement between a set of samples or between duplicate samples. Relates to how close together the results are and is represented by Relative Percent Difference.
- Surrogate - Organic compounds that are similar in chemical composition, extraction, and chromatography to analytes of interest. The surrogates are used to determine the probable response of the group of analytes that are chemically related to the surrogate compound. Surrogates are added to the sample and carried through all stages of preparation and analyses.
- TIC - Tentatively Identified Compound: Compounds detected in samples that are not target compounds, internal standards, system monitoring compounds, or surrogates.

Summary of Remarks For Samples Printed  
02/27/13 at 16:48:18

TSR Signing Reports: 288  
R5 - Desired TAT

Domestic Water Well Sampling-see L609759 Lobato for tests

Sample: L621771-01 Account: XTORNM Received: 02/23/13 09:20 Due Date: 03/01/13 00:00 RPT Date: 02/27/13 16:47



12065 Lebanon Rd.  
Mt. Juliet, TN 37122  
(615) 758-5858  
1-800-767-5859  
Fax (615) 758-5859

Tax I.D. 62-0814289

Est. 1970

XTO Energy - San Juan Division  
Logan Hixon  
382 County Road 3100

Quality Assurance Report  
Level II

Aztec, NM 87410

February 27, 2013

L621771

Analyte	Result	Laboratory Blank Units % Rec	Limit	Batch	Date Analyzed
TPH (GC/FID) High Fraction o-Terphenyl	< 4	mg/kg % Rec. 75.40	50-150	WG638272	02/25/13 16:27
Total Solids	< .1	%		WG638358	02/26/13 10:20
Chloride	< 10	mg/kg		WG638433	02/26/13 12:05
Benzene	< .0005	mg/kg		WG638460	02/26/13 16:56
Ethylbenzene	< .0005	mg/kg		WG638460	02/26/13 16:56
Toluene	< .005	mg/kg		WG638460	02/26/13 16:56
TPH (GC/FID) Low Fraction	< .1	mg/kg		WG638460	02/26/13 16:56
Total Xylene	< .0015	mg/kg		WG638460	02/26/13 16:56
a,a,a-Trifluorotoluene(FID)		% Rec. 97.39	59-128	WG638460	02/26/13 16:56
a,a,a-Trifluorotoluene(PID)		% Rec. 99.11	54-144	WG638460	02/26/13 16:56

Analyte	Units	Result	Duplicate Duplicate	RPD	Limit	Ref Samp	Batch
Total Solids	%	86.0	85.7	0.378	5	L621784-02	WG638358
Chloride	mg/kg	60.0	55.4	7.97	20	L621459-01	WG638433

Analyte	Units	Laboratory Control Sample Known Val Result	% Rec	Limit	Batch
TPH (GC/FID) High Fraction o-Terphenyl	mg/kg	60	38.3 70.20	63.8 50-150	WG638272 WG638272
Total Solids	%	50	50.1	100.	85-115 WG638358
Chloride	mg/kg	200	208.	104.	80-120 WG638433
Benzene	mg/kg	.05	0.0449	89.8	76-113 WG638460
Ethylbenzene	mg/kg	.05	0.0483	96.7	78-115 WG638460
Toluene	mg/kg	.05	0.0503	101.	76-114 WG638460
Total Xylene	mg/kg	.15	0.144	95.9	81-118 WG638460
a,a,a-Trifluorotoluene(PID)			99.51	54-144	WG638460
TPH (GC/FID) Low Fraction	mg/kg	5.5	6.27	114.	67-135 WG638460
a,a,a-Trifluorotoluene(FID)			101.1	59-128	WG638460
a,a,a-Trifluorotoluene(PID)			110.0	54-144	WG638460

Analyte	Units	Laboratory Control Sample Duplicate Result Ref %Rec	Limit	RPD	Limit	Batch
TPH (GC/FID) High Fraction o-Terphenyl	mg/kg	38.2 38.3 64.0 80.00	50-150 50-150	0.160	20	WG638272 WG638272
Chloride	mg/kg	203. 208. 102.	80-120	2.43	20	WG638433
Benzene	mg/kg	0.0452 0.0449 90.0	76-113	0.740	20	WG638460

\* Performance of this Analyte is outside of established criteria.  
For additional information, please see Attachment A 'List of Analytes with QC Qualifiers.'



12065 Lebanon Rd.  
Mt. Juliet, TN 37122  
(615) 758-5858  
1-800-767-5859  
Fax (615) 758-5859

Tax I.D. 62-0814289

Est. 1970

**YOUR LAB OF CHOICE**

XTO Energy - San Juan Division  
Logan Hixon  
382 County Road 3100

Quality Assurance Report  
Level II

Aztec, NM 87410

L621771

February 27, 2013

Analyte	Units	Laboratory Control Sample Duplicate			Limit	RPD	Limit	Batch
		Result	Ref	%Rec				
Ethylbenzene	mg/kg	0.0490	0.0483	98.0	78-115	1.44	20	WG638460
Toluene	mg/kg	0.0501	0.0503	100.	76-114	0.580	20	WG638460
Total Xylene	mg/kg	0.145	0.144	96.0	81-118	0.520	20	WG638460
a,a,a-Trifluorotoluene (PID)				100.4	54-144			WG638460
TPH (GC/FID) Low Fraction	mg/kg	6.25	6.27	114.	67-135	0.290	20	WG638460
a,a,a-Trifluorotoluene (FID)				100.8	59-128			WG638460
a,a,a-Trifluorotoluene (PID)				109.5	54-144			WG638460

Analyte	Units	MS Res	Matrix Spike			Limit	Ref Samp	Batch
			Ref Res	TV	% Rec			
TPH (GC/FID) High Fraction	mg/kg	91.4	19.1	60	120.	50-150	L621758-09	WG638272
o-Terphenyl					88.80	50-150		WG638272
Chloride	mg/kg	546.	62.4	500	96.7	80-120	L621711-03	WG638433
Benzene	mg/kg	0.194	0.00866	.05	74.0	32-137	L621765-04	WG638460
Ethylbenzene	mg/kg	0.211	0.0169	.05	77.8	10-150	L621765-04	WG638460
Toluene	mg/kg	0.231	0.0381	.05	77.2	20-142	L621765-04	WG638460
Total Xylene	mg/kg	0.649	0.0967	.15	73.7	16-141	L621765-04	WG638460
a,a,a-Trifluorotoluene (PID)					99.02	54-144		WG638460
TPH (GC/FID) Low Fraction	mg/kg	286.	13.3	5.5	99.2	55-109	L621771-01	WG638460
a,a,a-Trifluorotoluene (FID)					99.29	59-128		WG638460

Analyte	Units	MSD	Matrix Spike Duplicate			Limit	RPD	Limit	Ref Samp	Batch
			Ref	%Rec						
TPH (GC/FID) High Fraction	mg/kg	77.6	91.4	97.5		50-150	16.3	20	L621758-09	WG638272
o-Terphenyl				86.80		50-150				WG638272
Chloride	mg/kg	552.	546.	97.9		80-120	1.09	20	L621711-03	WG638433
Benzene	mg/kg	0.206	0.194	78.9		32-137	6.09	39	L621765-04	WG638460
Ethylbenzene	mg/kg	0.223	0.211	82.5		10-150	5.42	44	L621765-04	WG638460
Toluene	mg/kg	0.235	0.231	78.8		20-142	1.72	42	L621765-04	WG638460
Total Xylene	mg/kg	0.674	0.649	77.0		16-141	3.82	46	L621765-04	WG638460
a,a,a-Trifluorotoluene (PID)				99.38		54-144				WG638460
TPH (GC/FID) Low Fraction	mg/kg	319.	286.	111.*		55-109	11.0	20	L621771-01	WG638460
a,a,a-Trifluorotoluene (FID)				100.4		59-128				WG638460

Batch number /Run number / Sample number cross reference

WG638272: R2557280: L621771-01  
WG638358: R2557878: L621771-01  
WG638433: R2558977: L621771-01  
WG638460: R2559938: L621771-01

\* \* Calculations are performed prior to rounding of reported values.

\* Performance of this Analyte is outside of established criteria.

For additional information, please see Attachment A 'List of Analytes with QC Qualifiers.'





12065 Lebanon Rd.  
Mt. Juliet, TN 37122  
(615) 758-5858  
1-800-767-5859  
Fax (615) 758-5859

Tax I.D. 62-0814289

Est. 1970

**YOUR LAB OF CHOICE**

XTO Energy - San Juan Division  
Logan Hixon  
382 County Road 3100  
Aztec, NM 87410

Quality Assurance Report  
Level II

L621771

February 27, 2013

The data package includes a summary of the analytic results of the quality control samples required by the SW-846 or CWA methods. The quality control samples include a method blank, a laboratory control sample, and the matrix spike/matrix spike duplicate analysis. If a target parameter is outside the method limits, every sample that is effected is flagged with the appropriate qualifier in Appendix B of the analytic report.

Method Blank - an aliquot of reagent water carried through the entire analytic process. The method blank results indicate if any possible contamination exposure during the sample handling, digestion or extraction process, and analysis. Concentrations of target analytes above the reporting limit in the method blank are qualified with the "B" qualifier.

Laboratory Control Sample - is a sample of known concentration that is carried through the digestion/extraction and analysis process. The percent recovery, expressed as a percentage of the theoretical concentration, has statistical control limits indicating that the analytic process is "in control". If a target analyte is outside the control limits for the laboratory control sample or any other control sample, the parameter is flagged with a "J4" qualifier for all effected samples.

Matrix Spike and Matrix Spike Duplicate - is two aliquots of an environmental sample that is spiked with known concentrations of target analytes. The percent recovery of the target analytes also has statistical control limits. If any recoveries that are outside the method control limits, the sample that was selected for matrix spike/matrix spike duplicate analysis is flagged with either a "J5" or a "J6". The relative percent difference (%RPD) between the matrix spike and the matrix spike duplicate recoveries is all calculated. If the RPD is above the method limit, the effected samples are flagged with a "J3" qualifier.





## Analytical Report

### Report Summary

Client: XTO Energy Inc.

Chain Of Custody Number: 15210

Samples Received: 2/19/2013 11:30:00AM

Job Number: 98031-0528

Work Order: P302087

Project Name/Location: EH Pipkin #9

Entire Report Reviewed By:

A handwritten signature in black ink, appearing to read 'Tim Cain', is written over a horizontal line.

Date: 2/20/13

Tim Cain, Laboratory Manager

The results in this report apply to the samples submitted to Envirotech's Analytical Laboratory and were analyzed in accordance with the chain of custody document supplied by you, the client, and as such are for your exclusive use only. The results in this report are based on the sample as received unless otherwise noted. Partial or incomplete reproduction of this report is prohibited, unless approved by Envirotech, Inc. If you have any questions regarding this analytical report, please don't hesitate to contact Envirotech's Laboratory Staff.



XTO Energy Inc.  
382 CR 3100  
Aztec NM, 87410

Project Name: EH Pipkin #9  
Project Number: 98031-0528  
Project Manager: Logan Hixon

**Reported:**  
20-Feb-13 14:15

### Analytical Report for Samples

Client Sample ID	Lab Sample ID	Matrix	Sampled	Received	Container
Bgt Composite	P302087-01A	Soil	02/18/13	02/19/13	Glass Jar, 4 oz.

Partial or incomplete reproduction of this report is prohibited, unless approved by Envirotech, Inc.

5796 US Highway 64, Farmington, NM 87401

Three Springs • 65 Mercado Street, Suite 115, Durango, CO 81301

Ph (505) 632-0615 Fx (505) 632-1865

Ph (970) 259-0615 Fr (800) 362-1879

envirotech-inc.com

laboratory@envirotech-inc.com



XTO Energy Inc.  
382 CR 3100  
Aztec NM, 87410

Project Name: EH Pipkin #9  
Project Number: 98031-0528  
Project Manager: Logan Hixon

Reported:  
20-Feb-13 14:15

**Bgt Composite**  
**P302087-01 (Solid)**

Analyte	Result	Reporting		Units	Dilution	Batch	Prepared	Analyzed	Method	Notes
		Limit								

**Total Petroleum Hydrocarbons by 418.1**

Total Petroleum Hydrocarbons	28.0	20.0	mg/kg	3.997	1308021	20-Feb-13	20-Feb-13	EPA 418.1		
------------------------------	------	------	-------	-------	---------	-----------	-----------	-----------	--	--

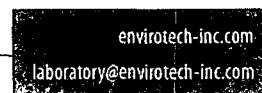
Partial or incomplete reproduction of this report is prohibited, unless approved by Envirotech, Inc.

5796 US Highway 64, Farmington, NM 87401

Ph (505) 632-0615 Fx (505) 632-1865

Three Springs - 65 Mercado Street, Suite 115, Durango, CO 81301

Ph (970) 259-0615 Fr (800) 362-1879



XTO Energy Inc.	Project Name:	EH Pipkin #9	Reported: 20-Feb-13 14:15
382 CR 3100	Project Number:	98031-0528	
Aztec NM, 87410	Project Manager:	Logan Hixon	

## Total Petroleum Hydrocarbons by 418.1 - Quality Control

### Envirotech Analytical Laboratory

Analyte	Result	Reporting Limit	Units	Spike Level	Source Result	%REC	%REC Limits	RPD	RPD Limit	Notes
---------	--------	--------------------	-------	----------------	------------------	------	----------------	-----	--------------	-------

#### Batch 1308021 - 418 Freon Extraction

<b>Blank (1308021-BLK1)</b>		Prepared & Analyzed: 20-Feb-13								
Total Petroleum Hydrocarbons	ND	20.0	mg/kg							
<b>Duplicate (1308021-DUP1)</b>		<b>Source: P302085-01</b>		Prepared & Analyzed: 20-Feb-13						
Total Petroleum Hydrocarbons	1270	20.0	mg/kg		1160			8.77	30	
<b>Matrix Spike (1308021-MS1)</b>		<b>Source: P302085-01</b>		Prepared & Analyzed: 20-Feb-13						
Total Petroleum Hydrocarbons	2800	20.0	mg/kg	2000	1160	82.0	80-120			

Partial or incomplete reproduction of this report is prohibited, unless approved by Envirotech, Inc.



XTO Energy Inc.  
382 CR 3100  
Aztec NM, 87410

Project Name: EH Pipkin #9  
Project Number: 98031-0528  
Project Manager: Logan Hixon

**Reported:**  
20-Feb-13 14:15

#### Notes and Definitions

DET Analyte DETECTED  
ND Analyte NOT DETECTED at or above the reporting limit  
NR Not Reported  
dry Sample results reported on a dry weight basis  
RPD Relative Percent Difference

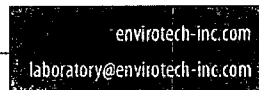
Partial or incomplete reproduction of this report is prohibited, unless approved by Envirotech, Inc.

5796 US Highway 64, Farmington, NM 87401

Ph (505) 632-0615 Fx (505) 632-1865

Three Springs - 65 Mercado Street, Suite 115, Durango, CO 81301

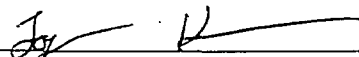

Ph (970) 259-0615 Fr (800) 362-1879



# CHAIN OF CUSTODY RECORD

15210

Page 6 of 6

Client: <b>XTO</b>			Project Name / Location: <b>EH pipkin #9</b>			ANALYSIS / PARAMETERS													
Email results to: <b>Logan-Hixon@xtobenergy.com</b>			Sampler Name: <b>Logan Hixon</b>			TPH (Method 8015)	BTEX (Method 8021)	VOC (Method 8260)	RCRA 8 Metals	Cation / Anion	RCI	TCLP with H/P	CO Table 910-1	TPH (418.1)	CHLORIDE			Sample Cool	Sample Intact
Client Phone No.: <b>(505) 386-8018</b>			Client No.: <b>98301-0528</b>																
Sample No./ Identification	Sample Date	Sample Time	Lab No.	No./Volume of Containers	Preservative														
					HgCl <sub>2</sub>	HCl													
<b>B&amp;T Composite</b>	<b>2-18-13</b>	<b>12:00</b>	<b>P302081-01</b>	<b>1402</b>														<b>X</b>	
Relinquished by: (Signature) 				Date <b>2-19-13</b>	Time <b>11:30</b>	Received by: (Signature) 												Date <b>2/19/13</b>	Time <b>11:30</b>
Relinquished by: (Signature)						Received by: (Signature)													
Sample Matrix Soil <input checked="" type="checkbox"/> Solid <input type="checkbox"/> Sludge <input type="checkbox"/> Aqueous <input type="checkbox"/> Other <input type="checkbox"/>																			
<input type="checkbox"/> Sample(s) dropped off after hours to secure drop off area.																			





## **Affected Area and Cleanup Actions**

March 6, 2013

Logan Hixon (XTO) was on site to begin cleanup activities of the failed BGT closure sample. The site was then ranked pursuant to the NMOCD Guidelines for the Remediation of Leaks, Spills and Releases. The site was ranked a 20 due to an estimated distance of less than 200 feet to drainage. This set the closure standard to 100 ppm TPH, 10 ppm benzene and 50 ppm total BTEX, or 100 ppm organic vapors (OV). The excavation began and had reached an extent of 16'x16'x 5'. A composite sample was taken of the bottom of the excavation. Organic vapor (OV) sampling was completed on the composite sample. The sample collected from the bottom returned results above the OV standard determined for this site. The excavation continued to the extent of 16'x 16'x 6'. A sample was then collected from the bottom and analyzed for OV. The sample returned results above the standards for OV determined for this site. The excavation continued to the extent of 16'x 16'x 7'. A sample was then collected from the bottom and analyzed for OV. The sample returned results below the standards for OV determined for this site. The sample from the bottom was sent for TPH and BTEX analysis via US EPA Method 8015 and USEPA Method 8021 respectively. Approximately 60 CY of soil was disposed of at Envirotech land farm. \*Field notes attached.

April 3, 2013-

The sample returned laboratory results beneath the standards determined for this site for the bottom. \*Lab analysis attached.

April 12, 2013

The excavation was closed and will be reclaimed per BLM MOU.



## XTO Energy On-Site Form

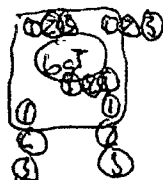
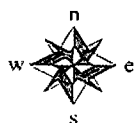
Well Name FH Pipkin #9 API # \_\_\_\_\_

Section \_\_\_\_\_ Township \_\_\_\_\_ Range \_\_\_\_\_ County SJ

Contractors On-Site ADOLE Time On-Site 9:00 Time Off-Site 12:30

Spill Amount \_\_\_\_\_ bbls Spilled ( Oil/Produced W/Other \_\_\_\_\_ ) RCVRD \_\_\_\_\_

Land Use ( Range / Residential / Tribe \_\_\_\_\_ ) Excavation 20 x 15 x 7' deep



(WH)



Sample Location

Site Diagram

Sample Location

Comments

Number of Photos Taken

### Samples

Time	Sample #	Sample Description	Characteristics	OVM (ppm)	Analysis Requested
9:30	NA	100 Standard	NA	98	NA
10:15	(1)	Bottom 1'	Saw	690	
10:45	(2)	Bottom 2'	Saw	190	
11:45	(3)	Bottom 3'	Saw	102	8015, 8021

Name (Print) Logan Hixon

Date 3-26-13

Name (Signature) Joyce H

Company XTO



12065 Lebanon Rd.  
Mt. Juliet, TN 37122  
(615) 758-5858  
1-800-767-5859  
Fax (615) 758-5859

Tax I.D. 62-0814289

Est. 1970

Logan Hixon or Kaylan Dirkx  
XTO Energy  
2320 South Central Avenue  
Sidney, MT 59270

### Report Summary

Wednesday April 03, 2013

Report Number: L627181

Samples Received: 03/27/13

Client Project:

Description: EH Pipkin # 9

The analytical results in this report are based upon information supplied by you, the client, and are for your exclusive use. If you have any questions regarding this data package, please do not hesitate to call.

Entire Report Reviewed By:

Daphne Richards , ESC Representative

### Laboratory Certification Numbers

A2LA - 1461-01, AIHA - 100789, AL - 40660, CA - 01157CA, CT - PH-0197,  
FL - E87487, GA - 923, IN - C-TN-01, KY - 90010, KYUST - 0016,  
NC - ENV375/DW21704/BIO041, ND - R-140, NJ - TN002, NJ NELAP - TN002,  
SC - 84004, TN - 2006, VA - 460132, WV - 233, AZ - 0612,  
MN - 047-999-395, NY - 11742, WI - 998093910, NV - TN000032011-1,  
TX - T104704245-11-3, OK - 9915, PA - 68-02979, IA Lab #364

Accreditation is only applicable to the test methods specified on each scope of accreditation held by ESC Lab Sciences.

Note: The use of the preparatory EPA Method 3511 is not approved or endorsed by the CA ELAP.

This report may not be reproduced, except in full, without written approval from ESC Lab Sciences. Where applicable, sampling conducted by ESC is performed per guidance provided in laboratory standard operating procedures: 060302, 060303, and 060304.



12065 Lebanon Rd.  
Mt. Juliet, TN 37122  
(615) 758-5858  
1-800-767-5859  
Fax (615) 758-5859

Tax I.D. 62-0814289

Est. 1970

YOUR LAB OF CHOICE

# REPORT OF ANALYSIS

Logan Hixon or Kaylan Dirkx  
XTO Energy  
2320 South Central Avenue  
Sidney, MT 59270

April 03, 2013

Date Received : March 27, 2013  
Description : EH Pipkin # 9  
Sample ID : BGT BOTTOM 3 FT  
Collected By : Logan Hixon  
Collection Date : 03/26/13 11:45

ESC Sample # : L627181-01

Site ID :

Project # :

Parameter	Result	Det. Limit	Units	Method	Date	Dil.
Benzene	BDL	0.0025	mg/kg	8021/8015	04/01/13	5
Toluene	BDL	0.025	mg/kg	8021/8015	04/01/13	5
Ethylbenzene	BDL	0.0025	mg/kg	8021/8015	04/01/13	5
Total Xylene	BDL	0.0075	mg/kg	8021/8015	04/01/13	5
TPH (GC/FID) Low Fraction	BDL	0.50	mg/kg	GRO	04/01/13	5
Surrogate Recovery-%						
a,a,a-Trifluorotoluene(FID)	99.8		% Rec.	8021/8015	04/01/13	5
a,a,a-Trifluorotoluene(PID)	99.3		% Rec.	8021/8015	04/01/13	5
TPH (GC/FID) High Fraction	BDL	4.0	mg/kg	3546/DRO	04/01/13	1
Surrogate recovery(%)						
o-Terphenyl	85.0		% Rec.	3546/DRO	04/01/13	1

BDL - Below Detection Limit

Det. Limit - Practical Quantitation Limit(PQL)

Note:

The reported analytical results relate only to the sample submitted.

This report shall not be reproduced, except in full, without the written approval from ESC.

Reported: 04/02/13 18:30 Revised: 04/03/13 09:16

[illegible]

## Hixon, Logan

---

**From:** Hixon, Logan  
**Sent:** Friday, March 01, 2013 1:06 PM  
**To:** BRANDON POWELL (brandon.powell@state.nm.us); MARK KELLY (mark\_kelly@blm.gov)  
**Cc:** McDaniel, James; Hoekstra, Kurt  
**Subject:** BGT Closure Notifications-RP Hargrave K #1E (33-045-25635), Florance D LS #16 (30-045-11707), EH Pipkin #9 (30-045-06957), Federal E #1 (30-045-07481)

Brandon & Mark,

Please accept this email as the required notification for BGT closure activities at these sites:

*RP Hargrave K #1E (API 30-045-25635) Located in Section 16 (C), Township 27N, Range 10W, San Juan County, New Mexico.*

*Florance D LS #16 (API 30-045-11707) Located in Section 20 (H), Township 27N, Range 8W, San Juan County, New Mexico.*

*EH Pipkin #9 (API 30-045-06957) Located in Section 35 (N), Township 28N, Range 11W, San Juan County, New Mexico.*

*Federal E #1 (API 30-045-07481) Located in Section 17 (G), Township 28N, Range 10W, San Juan County, New Mexico.*

These below grade tanks are being closed due to the P&A'ing of these well sites.

Thank you for your time in regards to this matter.



*Thank You!*  
*Logan Hixon*  
*Western Division*  
*382 CR 3100*  
*Aztec NM 87410*  
*Office (505) 333-3683*



# Well Below Tank Inspection Report

RouteName	StopName	Pumper	Foreman	WellName	APIWellNumber	Section	Range	Township
DEN NM Run 40	PIPKIN EH 009	Meek, Robert	Sanders, David	EH PIPKIN 09	3004506957	35	11W	28N

InspectorName	Inspection Date	Inspection Time	Visible LinerTears	VisibleTankLeak Overflow	Collection OfSurfaceRun	Visible LayerOil	Visible Leak	Freeboard EstFT	PitLocation	PitType	Notes
DANNY RAY	08/28/2008	12:35	No	No	No	Yes	No	3			
RICK	09/26/2008	11:53	No	No	No	Yes	No	3			
ZACH	10/29/2008	12:35	No	No	No	Yes	No	2	Well Water	Below Ground	
ZACH	11/14/2008	01:21	No	No	No	Yes	No	2	Well Water	Below Ground	
ZB	01/20/2009	11:25	No	No	No	Yes	No	2	Well Water	Below Ground	
Bks	02/24/2009	09:43	No	No	No	Yes	No	2	Well Water	Below Ground	
Bks	03/18/2009	12:00	No	No	No	Yes	No	2	Well Water	Below Ground	
Bks	04/28/2009	09:35	No	No	No	Yes	No	2	Well Water	Below Ground	
ZB	05/12/2009	09:00	No	No	No	Yes	No	3	Well Water	Below Ground	
ZB	06/23/2009	10:30	No	No	No	Yes	No	2	Well Water	Below Ground	
ZB	07/14/2009	10:35	No	No	No	Yes	No	2	Well Water	Below Ground	
ZB	08/12/2009	11:10	No	No	No	Yes	No	2	Well Water	Below Ground	
ZB	09/22/2009	01:30	No	No	No	Yes	No	2	Well Water	Below Ground	
Bks	10/27/2009	11:00	No	No	No	Yes	No	2	Well Water	Below Ground	
ZB	11/17/2009	11:30	No	No	No	Yes	No	1	Well Water	Below Ground	
ZB	12/15/2009	10:35	No	No	No	No	No	3	Well Water	Below Ground	
ZB	01/26/2010	11:50	No	No	No	No	No	3	Well Water	Below Ground	
Bks	02/24/2010	12:00	No	No	No	No	No	2	Well Water	Below Ground	
ZB	03/09/2010	01:00	No	No	No	Yes	No	3	Well Water	Below Ground	
ZB	04/06/2010	01:30	No	No	No	Yes	No	3	Well Water	Below Ground	
ZB	05/04/2010	01:00	No	No	No	Yes	No	3	Well Water	Below Ground	
ZB	06/15/2010	12:00	No	No	No	Yes	No	2	Well Water	Below Ground	
ZB	07/13/2010	12:15	No	No	No	Yes	No	3	Well Water	Below Ground	
ZB	08/10/2010	10:25	No	No	No	Yes	No	3	Well Water	Below Ground	
ZB	09/07/2010	11:30	No	No	No	Yes	No	4	Well Water	Below Ground	
ZB	10/05/2010	10:50	No	No	No	Yes	No	4	Well Water	Below Ground	
RM	11/02/2010	10:50	No	No	No	Yes	No	3	Well Water	Below Ground	
ZB	12/15/2010	10:40	No	No	No	Yes	No	3	Well Water	Below Ground	
RM	01/14/2011	10:40	No	No	No	Yes	No	3	Well Water	Below Ground	
ZB	02/08/2011	01:20	No	No	No	Yes	No	3	Well Water	Below Ground	
ZB	03/09/2011	09:35	No	No	No	Yes	No	3	Well Water	Below Ground	
RM	04/04/2011	09:35	No	No	No	Yes	No	3	Well Water	Below Ground	
ZB	05/04/2011	03:05	No	No	No	Yes	No	3	Well Water	Below Ground	
ZB	06/02/2011	09:50	No	No	No	Yes	No	4	Well Water	Below Ground	
ZB	07/06/2011	01:05	No	No	No	Yes	No	4	Well Water	Below Ground	
ZB	08/03/2011	12:30	No	No	No	Yes	No	4	Well Water	Below Ground	
ZB	09/14/2011	01:00	No	No	No	Yes	No	4	Well Water	Below Ground	
ZB	10/04/2011	02:35	No	No	No	Yes	No	4	Well Water	Below Ground	
RM	11/03/2011	11:25	No	No	No	Yes	No	3	Well Water	Below Ground	
RM	12/12/2011	02:05	No	No	No	Yes	No	2	Well Water	Below Ground	
RM	01/10/2012	01:35	No	No	No	Yes	No	2	Well Water	Below Ground	
RM	02/06/2012	01:35	No	No	No	Yes	No	2	Well Water	Below Ground	
RM	04/04/2012	11:25	No	No	No	Yes	No	2	Well Water	Below Ground	
RM	05/01/2012	11:55	No	No	No	Yes	No	2	Well Water	Below Ground	
RM	06/12/2012	01:30	No	No	No	Yes	No	2	Well Water	Below Ground	
RM	07/03/2012	01:30	No	No	No	Yes	No	2	Well Water	Below G ONE FOOT DIRT IN PIT	
RM	08/01/2012	01:30	No	No	No	Yes	No	2	Well Water	Below G ONE FOOT DIRT IN PIT	
RM	09/05/2012	10:45	No	No	No	Yes	No	2	Well Water	Below G ONE FOOT DIRT IN PIT	
RM	11/19/2012	10:45	No	No	No	Yes	No	2	Well Water	Below G ONE FOOT DIRT IN PIT	
RM	12/03/2012	10:45	No	No	No	Yes	No	2	Well Water	Below G ONE FOOT DIRT IN PIT	
RM	02/04/2013	10:45	No	No	No	Yes	No	2	Well Water	Below G ONE FOOT DIRT IN PIT	

XTO Energy, Inc.  
EH Pipkin #9  
Section 35 (N), Township 28N, Range 11W  
Closure Date 4/12/2013



Photo 1: EH Pipkin #9 after Reclamation.



Photo 2: EH Pipkin #9 after Reclamation.



XTO Energy, Inc.  
EH Pipkin #9  
Section 35 (N), Township 28N, Range 11W  
Closure Date 4/12/2013

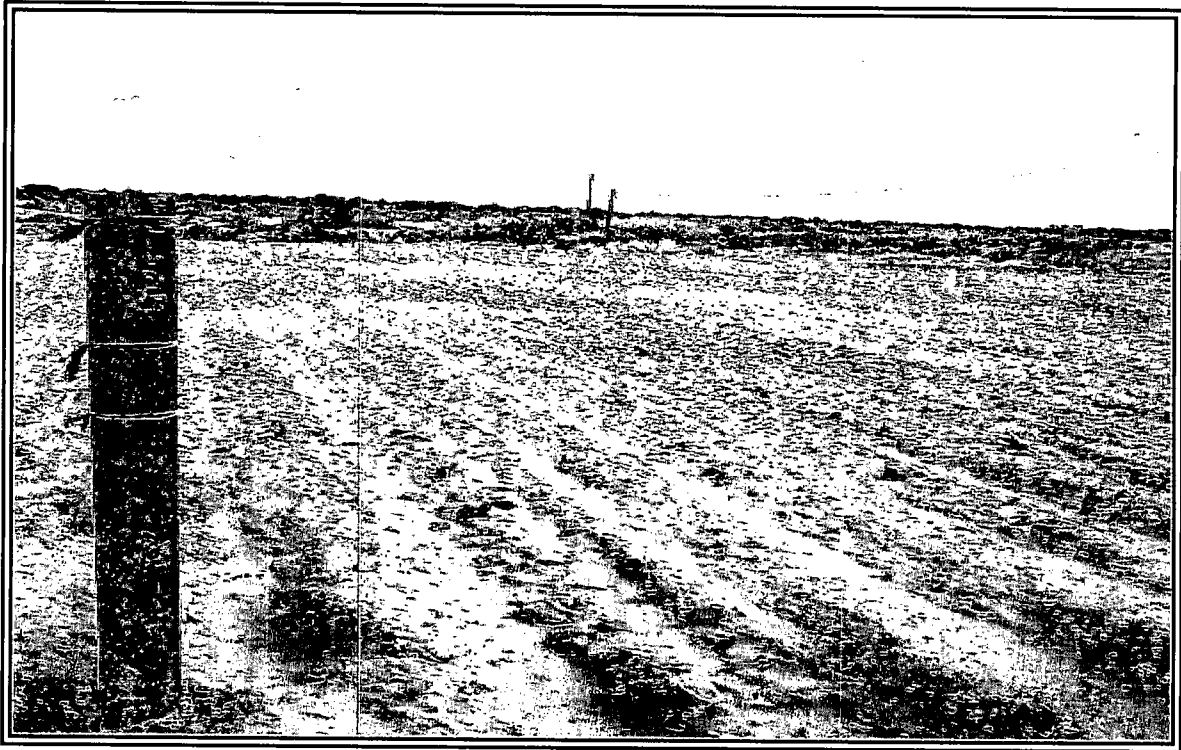


Photo 3: EH Pipkin #9 after Reclamation.



Photo 4: EH Pipkin #9 after Reclamation.