

State of New Mexico
Energy, Minerals and Natural Resources Department

Susana Martinez
Governor

David Martin
Cabinet Secretary-Designate

Brett F. Woods, Ph.D.
Deputy Cabinet Secretary

Jami Bailey, Division Director
Oil Conservation Division



New Mexico Oil Conservation Division approval and conditions listed below are made in accordance with OCD Rule 19.15.7.11 and are in addition to the actions approved by BLM on the following 3160-4 or 3160-5 form.

Operator Signature Date: 10/29/13

Application Type:

☒ P&A ☐ Drilling/Casing Change ☐ Recomplete/DHC
☐ Location Change ☐ Other: _____

Well information:

| API WELL # | Well Name | Well # | Operator Name | Type | Stat | County | Surf. Owner | UL | Sec | Twp | N/S | Rng | W/E |
|--------------------|-------------|--------|------------------------|------|------|------------|-------------|----|-----|-----|-----|-----|-----|
| 30-039-05866-00-00 | JICARILLA C | 017 | FOUR STAR OIL & GAS CO | G | A | Rio Arriba | J | D | 28 | 25 | N | 5 | W |

Conditions of Approval:

Notify NMOCD 24hrs prior to beginning operations.

Provide CBL for agencies review prior to cementing

NMOCD Approved by Signature

11-13-13
Date

UNITED STATES
DEPARTMENT OF THE INTERIOR
BUREAU OF LAND MANAGEMENTFORM APPROVED
OMB NO. 1004-0135
Expires: July 31, 2010**SUNDRY NOTICES AND REPORTS ON WELLS**
*Do not use this form for proposals to drill or to re-enter an abandoned well. Use form 3160-3 (APD) for such proposals.***SUBMIT IN TRIPLICATE - Other instructions on reverse side.**5. Lease Serial No.
JIC346. If Indian, Allottee or Tribe Name
JICARILLA APACHE

7. If Unit or CA/Agreement, Name and/or No.

8. Well Name and No.
JICARILLA C 179. API Well No.
30-039-05866-00-D110. Field and Pool, or Exploratory
OTERO
SOUTH BLANCO11. County or Parish, and State
RIO ARRIBA COUNTY, NM

1. Type of Well

☐ Oil Well ☒ Gas Well ☐ Other

2. Name of Operator

FOUR STAR OIL AND GAS COMPANY

Contact: APRIL E POHL

Mail: April.Pohl@chevron.com

3a. Address

HOUSTON, TX 77252

3b. Phone No. (include area code)

Ph: 505-3331901 E

Fx: 505-334-7134

4. Location of Well (Footage, Sec., T., R., M., or Survey Description)

Sec 28 T25N R5W NWNW 1190FNL 1190FWL
36.375069 N Lat, 107.370287 W Lon

12. CHECK APPROPRIATE BOX(ES) TO INDICATE NATURE OF NOTICE, REPORT, OR OTHER DATA

| TYPE OF SUBMISSION | TYPE OF ACTION | | | |
|------------------------------------------------------|-----------------------------------------------|------------------------------------------------------|----------------------------------------------------|-----------------------------------------|
| <input checked="" type="checkbox"/> Notice of Intent | <input type="checkbox"/> Acidize | <input type="checkbox"/> Deepen | <input type="checkbox"/> Production (Start/Resume) | <input type="checkbox"/> Water Shut-Off |
| <input type="checkbox"/> Subsequent Report | <input type="checkbox"/> Alter Casing | <input type="checkbox"/> Fracture Treat | <input type="checkbox"/> Reclamation | <input type="checkbox"/> Well Integrity |
| <input type="checkbox"/> Final Abandonment Notice | <input type="checkbox"/> Casing Repair | <input type="checkbox"/> New Construction | <input type="checkbox"/> Recomplete | <input type="checkbox"/> Other |
| | <input type="checkbox"/> Change Plans | <input checked="" type="checkbox"/> Plug and Abandon | <input type="checkbox"/> Temporarily Abandon | |
| | <input type="checkbox"/> Convert to Injection | <input type="checkbox"/> Plug Back | <input type="checkbox"/> Water Disposal | |

13. Describe Proposed or Completed Operation (clearly state all pertinent details, including estimated starting date of any proposed work and approximate duration thereof. If the proposal is to deepen directionally or recompleat horizontally, give subsurface locations and measured and true vertical depths of all pertinent markers and zones. Attach the Bond under which the work will be performed or provide the Bond No. on file with BLM/BIA. Required subsequent reports shall be filed within 30 days following completion of the involved operations. If the operation results in a multiple completion or recompleat in a new interval, a Form 3160-4 shall be filed once testing has been completed. Final Abandonment Notices shall be filed only after all requirements, including reclamation, have been completed, and the operator has determined that the site is ready for final inspection.)

Notify BLM and NMOCD of proposed P&A.

MIRU workover rig

ND Wellhead. NU BOP?s. Test BOP?s.

Pressure test tubing

pressure test tubing to 500#, if tubing tests it will be used as workstring, and 20 jts of 2-3/8?

tubing will need to be ordered out for the plugging. If tubing does not test POOH with tubing and order out 4210? of 2-7/8? workstring.

P/U and RIH with 4-3/4? bit, bit sub with float, XO and 2-3/8? tubing. RIH to top of fill @ 4210?.

(Fill was tagged in 2006) Cleanout any fill down to 4210?

RUN CBL to determine cement behind pipe. PROCEDURE MAY CHANGE WITH RESULTS OF CBL.

MIRU wireline and perforate at 4200? using 4 spf, 90 deg phase for squeeze holes.

Squeeze perms using 25 sks of cement.

**Notify NMOCD 24 hrs
prior to beginning
operations****RCVD NOV 4 '13
OIL CONS. DIV.
DIST. 3**

14. I hereby certify that the foregoing is true and correct.

**Electronic Submission #224783 verified by the BLM Well Information System
For FOUR STAR OIL AND GAS COMPANY, sent to the Rio Puerco
Committed to AFMSS for processing by STEVE MASON on 10/31/2013 (14SXM0410SE)**

Name (Printed/Typed) JAMIE ELKINGTON

Title PETROLEUM ENGINEER

Signature (Electronic Submission)

Date 10/29/2013

THIS SPACE FOR FEDERAL OR STATE OFFICE USE

Approved By STEPHEN MASON

Title PETROLEUM ENGINEER

Date 10/31/2013

Conditions of approval, if any, are attached. Approval of this notice does not warrant or certify that the applicant holds legal or equitable title to those rights in the subject lease which would entitle the applicant to conduct operations thereon.

Office Rio Puerco

Title 18 U.S.C. Section 1001 and Title 43 U.S.C. Section 1212, make it a crime for any person knowingly and willfully to make to any department or agency of the United States any false, fictitious or fraudulent statements or representations as to any matter within its jurisdiction.

**** BLM REVISED ** BLM REVISED ** BLM REVISED ** BLM REVISED ** BLM REVISED ******NMOCD**

Additional data for EC transaction #224783 that would not fit on the form

32. Additional remarks, continued

Perforate at 292? (50? below CSG shoe), using 4 SPF, 90 deg phase for squeeze holes.

Pick up 5-1/2? cement retainer and set at 3450?. (50? above Chacra Perfs). Cement through

retainer. Squeeze perfs from 3500?-3614? with 22 sks cement.

Spot 10 ?sks of cement on top of retainer.

Pick up 5-1/2? cement retainer and set at 2581?. (50? above PC Perfs). Cement through retainer.

Squeeze perfs from 2631?-2688? with 15 sks cement.

Spot 10 ?sks of cement on top of retainer.

MIRU wireline and perforate at 2250? using 4 spf, 90 deg phase for squeeze holes *flg 2308 - 2487 (Kirkland / O, 30 A/L no)*

MIRU cement provider. Establish injection. Squeeze perfs using 25 sks of cement. TOH.

MIRU wireline and perforate at 379? (50? below CSG shoe) using 4 spf, 90 deg phase for squeeze holes.

MIRU cement provider. Open bradenhead valves. Establish injection down workstring and retainer and attempt to circulate up surface casing. Squeeze the surface casing shoes with 115 sks cement.

Sting out of retainer and fill 5-1/2:? casing with 40 sks cement. Circulate BOP clean with water.

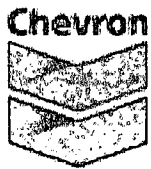
If unable to circulate, set a CMT retainer above the perforations and fill casing with cement to surface.

TOH and lay down workstring.

N/D BOP. Cut off wellhead, top fill with cement. Weld on dry hole marker.

Fractured plug 2482' - 2382' inside & outside 5 1/2" casing

Uncemented plug 766' - 666'

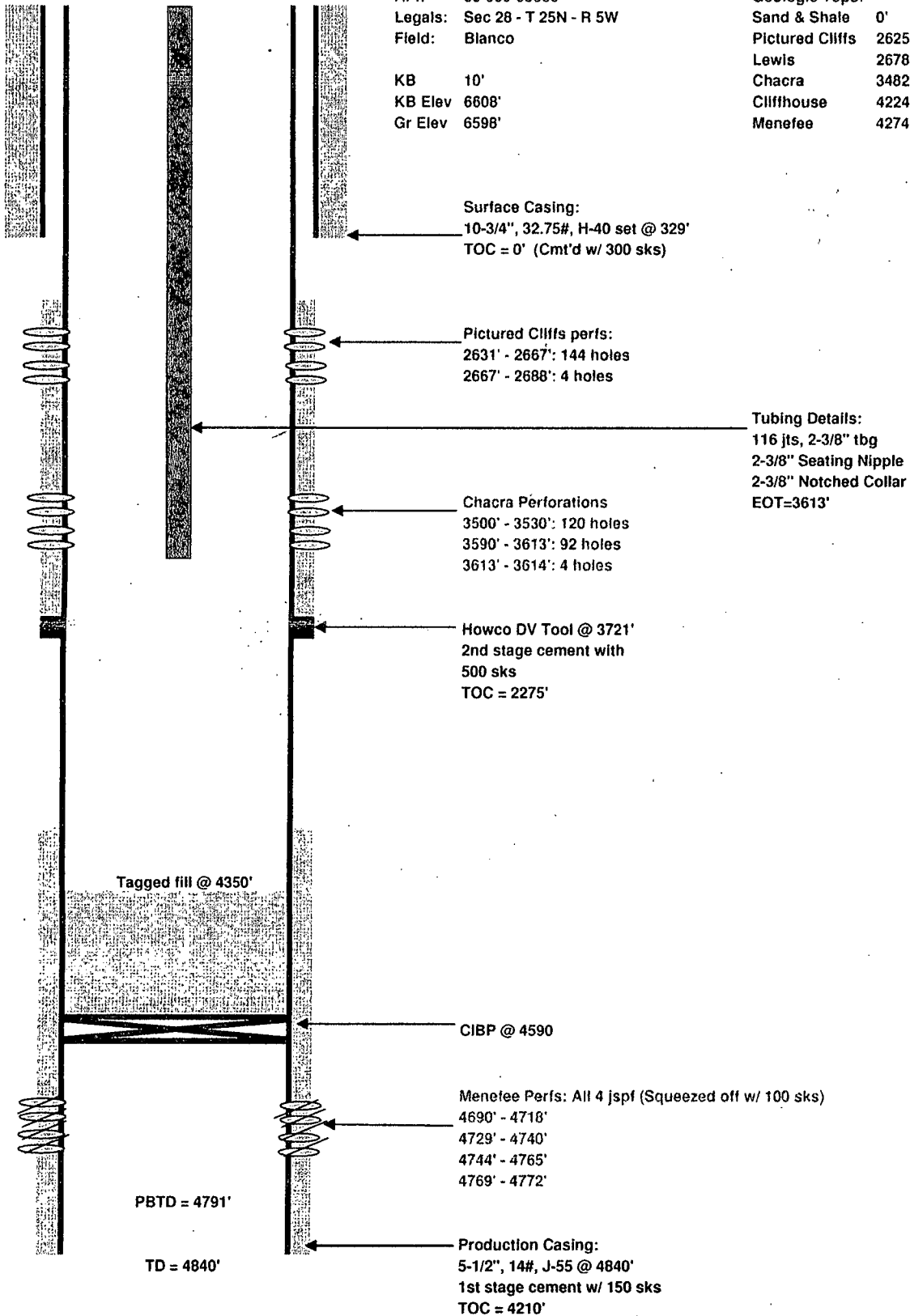


Jicarilla C-17
Rio Arriba County, New Mexico
Current Well Schematic as of 5-17-06

API: 30-039-05866
Legals: Sec 28 - T 25N - R 5W
Field: Blanco

KB 10'
KB Elev 6608'
Gr Elev 6598'

Geologic Tops:
Sand & Shale 0'
Pictured Cliffs 2625'
Lewis 2678'
Chacra 3482'
Cliffhouse 4224'
Menefee 4274'





ChevronTexaco

29-Apr-06

TRAVEL TO RIG AT H. J. LOE 3E

SAFETY MEETING W/ DAWN TRUCKING, COMMUNICATIONS, SPOTTERS, TRAFFIC

ROAD RIG TO WELL, LOAD HAUL ALL AIR AND RIG EQUIPMENT TO LOCATION.

SAFETY MEETING ON JSA'S ON SPOT EQUIPMENT AND RU

SPOT RIG MAT AND RIG, FRAC, FLOWBACK, RIG TANKS, RIG PUMP, JUNKBASKET, ACCUMULATOR, AIR EQUIPMENT

MIRU KEY 40, LAY LINES TO FLOWBACK TANK AND RIG PUMP, CHECK WELL, 1" - 70 PSI, 2 3/8" - 50 PSI, ANNULUS - 85

PSI, BRADENHEAD - 0 PSI. BLEED DOWN PSI.

BREAKDOWN LINES ON DUAL WELLHEAD, WHEN REMOVING VALVE OFF 1" TBG THE VALVE BROKE OFF W/ DUTCHMEN LEAVING 1" TBG

LOOKING UP OUT OF WELLHEAD W/ PARTIAL THREADS, ATTEMPTED TO REMOVE PACKING NUT OFF TBG HEAD BUT COULD NOT,

DRESSED UP THREADS ON 1" TBG AND REINSTALLED A 1" VALVE TO SECURE WELL, PUT WELL BACK TO SALES, SDFN.

TRAVEL TO FARMINGTON, WILL RESUME OP'S TUESDAY A.M.

2-May-06

TRAVEL TO LOCATION

SAFETY MEETING ON TIF, OE, RATTLESNAKES,

CHECK WELL, FWP - 1" - 62 PSI, 2" - 55 PSI, BLEED DOWN ALL PRESSURES, REMOVED PIPING FROM WELLHEAD, REMOVE TBG

HEAD NUT W/ CHAIN TONGS, NU 8 5/8" X 7 1/16 3K ADAPTER SPOOL, REMOVE 1" VALVE, CUT NEW THREADS IN 1" TBG AND

INSTALL COLLAR, PU SLIP GRIP ELEVATORS, PU ON 1" TBG 2", 1" SLIPS WOULD NOT PULL, CUT 1" PIPE BELOW BAD SPOT IN

PIPE WHERE SLIPS WERE SET AND RETHREAD SAME, PU ON 1" TO ATTEMPT TO PULL SLIPS, 1" PIPE MAY HAVE PARTED DOWN

HOLE, PU 1" TO COLLAR AND REMOVED SLIPS.

NU BOP'S. CHANGE OUT PIPE RAMS TO 1", RU FLOOR, RU TONGS.

POOH, LD, TALLY 1" TBG. RECOVERED 14 JTS. (352') PULLING SLOWLY, 1" COLLARS HANGING ON 2" COLLARS, FOUND TBG

PARTED IN THREADS.

CHANGE HANDLING EQUIPMENT TO 2 3/8", SCREW INTO HANGAR, WORKING TO FREE UP HANGAR, CAME FREE, PU TO 20K (4K

ABOVE STRING WT), SAT BACK DOWN, SECURE WELL, PUT TO SALES. SDFN.

TRAVEL TO FARMINGTON.

3-May-06

TRAVEL TO LOCATION

SAFETY MEETING ON TIF, JSA'S ON FREE PT AND CUTTING PIPE, STOP WORK AUTHORITY

MIRU WIRELINE SPECIALTIES, RIH W/ 1 7/16" FREE PT TOOLS. MADE TWO STOP'S AND TOOLS QUIT WORKING, POOH, CHANGE

OUT TOOLS, RAN FREEPOINT, 100% FREE AT 2100' UPPERMOST PT, 13% FREE AT 2245', POOH, PU 1 11/16" CHEMICAL CUTTER,

PUMP 15 BBL'S 2% KCL DOWN TBG, CUT 2 3/8" TBG AT 2245'. POOH, WORK PIPE FREE, RDMO WIRELINE SPECIALTIES.

POOH, LD HANGAR, CONTINUE OUT OF HOLE LD 2 3/8" REG 10RD TBG SLOWLY, DRAGGING FOR THE FIRST 36 JTS, COLLARS ARE

NOT TAPERED. RECOVERED 70 JTS, 2', 6', 8', 8' PUPS, TOTAL OF 2237.43 W/ 10' KB, SECURE WELL, SDFN. WORKSTRING

WILL BE DELIVERED LATER THIS EVENING.

TRAVEL TO FARMINGTON.

4-May-06

TRAVEL TO LOCATION



SAFETY MEETING ON TIF, OE, REDBOOK, TAG LINES, HANDLING DC'S

CHECK WELL, FWHP - 62 PSI, BLEED DOWN SAME, NOTE: RECEIVED AT LOCATION 5/3/06 EVENING 151 JTS 2 3/8" YELLOW BAND, 10 JTS 2 7/8" YELLOW BAND, 6 - 3 1/8" DC'S. PU 6 DC'S, RACK IN DERRICK, TALLY PIPE. MU FISHING TOOLS.

RIH W/ 4 11/16" OVERSOCKET W/ 1 1/8-1 5/8 SLIP, 10 JTS 2 7/8", 6.5#, EUE TBG, XO, 2 JTS 2 3/8" TBG, SN, 25 JTS

2 3/8" TBG, TAG FISH AT 1094.02, WORKOVER AND LATCH SAME, WORK SAME, WOULD NOT WORK FREE, PU AND PARTED AT 30K, 20K OVER, CAME FREE. POOH. LD 26 JTS 1" PIPE. (657.99') TOTAL RECOVERED - 1009.66'.

RIH W/ SAME BHA, TAG TOF (1") AT 1752.01'.

WORKING TBG OVER 1" TBG TO TOP OF 2 3/8" FISH AT 2238' PM, 10' IN ON JT # 62

POOH, LD 4 JTS 2 3/8" TBG, RACK BACK 54 JTS PULLING SLOWLY, DRAGGING FIRST 31 JTS, ROTATING PIPE BY HAND,

PULLING @ 22K. STRING WT - 14K, FOUND 1" TBG, RIH W/ 1 STND. SECURE WELL, PUT TO SALES, SDFN.

TRAVEL TO FARMINGTON.

5-May-06

TRAVEL TO LOCATION

SAFETY MEETING ON TIF, OE, REDBOOK, LAYING DOWN PIPE.

POOH W/ 2 3/8" AND 2 7/8" BHA CUT 1" PIPE AND LAYED DOWN W/ TBG (16 PIECES) TO OVERSHOT, LD 40 JTS 1" TBG.

RECOVERED 1516.20' OF 1", TOTAL RECOVERED - 2525.86'. LEAVES APPROX 116' TO RECOVER LESS KB.

PU & RIH W/ 4 11/16" FULL OPENING OVERSHOT, W/ 2 3/8" GRAPPLE, X-O SUB, 72JTS (4' OUT) 2 3/8" TBG. TAG FISH AT 2239' WORK & LATCH FISH.

PUMP 25 BBLS 2% KCL, CAUGHT PSI AFTER 20 BBLS PUMPED, PI TO PERFS @ 250 PSI. SD PUMP, ISIP - 0 PSI. WORK TBG TO UNSTING FROM PKR, WORK UP TO 54K. CAME FREE.

POOH W/ 2 3/8" TBG, PULLED 9 STANDS AND STARTED DRAGGING, WORKING PIPE, PULLING 20K OVER STRING WT: RECOVERED OVERSHOT, BREAKDOWN TOOLS, LD CUT JT AND 5 JTS 10RD TBG. PIPE WILL NOT FALL AT THIS PT, CAN ONLY PULL.

DRUM CHAIN BROKE, SECURE WELL, SDFN.

TRAVEL TO FARMINGTON

6-May-06

TRAVEL TO LOCATION

SAFETY MEETING ON TIF, MEETING OR EXCEEDING CUSTOMERS EXPECTATIONS, FROM REDBOOK, PPE.

REPAIRS TO RIG, DRUM CHAIN

CHECK WELL, FWHP - 62 PSI, BLEED DOWN SAME, CONTINUE OUT OF HOLE LAYING DOWN 2 3/8", 10 RD TBG. DRAGGING 10-20K OVER, INCHING OUT OF HOLE, PULLED OUT 1" TBG, LD SIMULTANEOUSLY RECOVERED 7 JTS OF 1", (1" WAS PARTED, 3JTS ALONGSIDE OF 4JTS) LD SEAL ASSY, APPEARS BTMM JT OF 1" RECOVERED, TOTAL OF 2701.34' OF 1", REC 38 JTS & 1 CUT JT 2 3/8" RECOVERED TOTAL OF 108 JTS 2 3/8" 10 RD. (107 FULL & 1 CUT JT) TOTAL OF 3440'. NOTE: FOUND A CIRCULATING VALVE IN SN ABOVE SEAL ASSY.

MU PACKER PICKER 4 3/4" OD SHOE ASSY, 3 1/8" JARS, 6 - 3 1/8" DC'S, X-O, (197.50), RIH W/ 35 STNDS 2 3/8" TBG,

PU & RIH W/ 34 JTS 2 3/8" TBG TO 3427.59'. NO TAG.

POOH W/ 13 STNDS 2 3/8" TBG, EOT - 2626.66', ABOVE TOP PERFS.

LOAD UP HANDLING TOOLS, SECURE WELL, PUT TO SALES, SECURE WELL, WILL RESUME OP'S TUESDAY 5/9/06

TRAVEL TO FARMINGTON.

9-May-06



TRAVEL KEY YARD TO JICARILLA C-17.

WHP = 62 PSI. SAFETY MEETING, DISCUSS 4 PTS TIF, JSA RIH & MILL BAKER MODEL D PACKER. ASSIGN MENTORS TO FIRST DAY GREEN HAT. JSO GREEN HAT MAKING A CONNECTION.

RIH W/ BAKER PACKER PLUCKER TO 3411'

TAG UP W/ MILLING TOOL @ 3446', ESTABLISH CIRCULATION, START MILLING PACKER

MILL PACKER

POOH W/ FISH.

LUNCH

POOH. LD COLLARS. LD PACKER.

SEND FLOAT TO TOWN W/ 1" TBG - 2-3/8" TBG PULLED FROM WELL, 6 COLLARS AND 10 JTS 2-7/8" NEW TBG.

WIND BLOWING TOO HARD TO RIH. TRAVEL JICARILLA C-17 TO FARMINGTON.

10-May-06

TRAVEL FROM KEY YARD TO JICARILLA C-17

DISCUS 4 POINTS OF TIF, JSA MAKE BIT & WATERMELON MILL, JSA CLEANOUT WITH AIR.

TRIP IN HOLE W/ 2 3/8 TBG. AND 4 3/4" BIT & MILL. START CIRCULATION 10 BPH MIST CONTAINING 2 GAL. PER 20 BBLS SOAP AND 2 GAL PER 20 BBLS CORROSION INHIBITOR. RUN 2 BBL SWEEPS EVERY HOUR CONTAINING 1/2 GAL SOAP.

POOH W/ BIT & MILL.

VERIFY JICARILLA 14E ANCHORS ARE CURRENT & READY FOR USE.

MAKE UP HALLIBURTON RBP & PACKER ON 2 3/8 TBG. RIH & SET RBP @ 3620'.

PULL PKR UP TO 2623' & SET. LOAD AND TEST ANN. TO 500 PSI. TEST WAS GOOD

RELEASE PKR, SECURE WELL. SDFD

TRAVEL FROM JICARILLA C-17 TO KEY YARD

11-May-06

TRAVEL FROM KEY YARD TO JICARRILA C-17

SAFETY MEETING, DISCUSS 4 POINTS OF TIF. JSA PUMPING ENERGIZED ACID, VERIFIED MENTORS FOR 2 HALLIBURTON GREEN HATS.

RIH W/ 2 3/8 TBG & PKR, SET @ 3480'

RIG UP HES AND FLOWBACK LINE. PRESSURE TEST TREATING LINES TO 4000 PSI.

ESTABLISH RATE W/ 2% KCL WATER @ 3BPM, 825 PSI, START PUMPING ACID AND N2. AVG. RATE WAS 1750 SCF N2 AND 4 BPM ACID. FLUSH W/ 2% KCL AND N2 @ SAME RATE AND PRESSURE. HALLIBURTON INADVERTENTLY FORGOT TO ADD FOAMER TO CHACRA TREATMENT. ISIP 1694 PSI. 5 MIN. 918 PSI. 10 MIN. 837 PSI. 15 MIN 777 PSI. MAX RATE WAS 2200 SCFPM N2

AND 4 BPM WATER. MAX PRESSURE WAS 2434 PSI.

FLOW WELL BACK TO FLOWBACK TANK ON 1/2" CHOKE. STARTING WAS 660 PSI. TOTAL FLOW BACK WAS 6 BBLS. PRESSURE FELL TO 0 PSI

RIG DOWN FLOWBACK LINE. RELEASE PKR. RIH AND RETRIEVE RBP. PULL RBP TO 2690 AND SET. PULL PKR TO 2590' AND SET.

RIG UP HES. PRESSURE TEST LINES TO 4000 PSI. ESTABLISH RATE W/ 2% KCL AT 4 BPM @ 1500 PSI. START PUMPING ACID @ 2130 SCF N2 AND 5 BPM ACID AT 2060 PSI. W/ FOAMER. DISPLACE ACID @ SAME RATE AND PRESSURE W/ 2% KCL W/ FOAMER. MAX PRESSURE 2130. ISIP 1368 PSI. 5 MIN 483 PSI. 10 MIN 415 PSI. 15 MIN 362 PSI.

OPEN WELL TO FLOWBACK TANK W/ 362 PSI. PRESSURE FELL TO 0 PSI. NO APPRECIABLE LIQUID.

RIG DOWN HES. RELEASE PKR. RIH AND RETRIEVE RBP. POH W/ PKR AND RBP. WELL STARTED KICKING W/ 34 JTS IN HOLE.

INSTALL TIW VALVE. PUMP 5 BBLS 2% KCL DOWN TO KILL TBG. FINISH POH W/ PKR AND RBP. LAY DOWN PKR AND RBP.



SWIFN. TRAVEL JICARRILLA C-17 TP FARMINGTON.

12-May-06

TRAVEL FROM KEY YARD TO JICARRILLA C-17

HELD SAFETY MEETING. DISCUSSED 4 POINTS OF TIF. JSA CLEANING OUT W/ AIR. WATCH FOR TRAPPED PRESSURE. STAY IN GOOD COMMUNICATION W/ EVERYONE ON LOCATION. TALKED ABOUT SNAKES ON LOCATION. FLAGGED T-POST MAKER ON DRIP LINE DAMAGED BY VEHICLE YESTERDAY (FACILITIES MANAGER NOTIFIED).

PICK UP 4 3/4" BIT AND STRING MILL. RIH W/ 2 3/8 TBG TO 3720'. RIG UP AND START CIRCULATING W/ AIR.

CIRCULATE W/ AIR MIST. TOOK 25 MIN TO GET CIR TO SURFACE. LINE ON MIST PUMP WASHED OUT. SHUT DOWN FOR REPAIRS.

REPAIR LINE ON MIST PUMP

START CIRCULATING AGAIN PUMPING W/ FOAMER AND CORROSION INHIBITOR. PUMP 2 BBL SWEEPS EVERY HR. RECOVERED 200 BBLs FLUID BACK TO FLOWBACK TANK 80 BBLs WAS FLUID PUMPED IN MIST LEAVING 120 BBLs RECOVERED FROM ACID JOB.

SHUT DOWN CIRCULATION. POH ABOVE PERFS. SECURE WELL. SDFD. RETURN WELL TO SALES LINE

TRAVEL FROM JICARRILLA C-2 TO KEY YARD.

13-May-06

TRAVEL FROM KEY YARD TO JICARRILLA C-17

HELD SAFETY MEETING ON 4 POINTS OF TIF. JSA ON SNAKES ON LOC, PROPER PPE AND LIFTING PRACTICES.

RIH W/ 2 3/8 TBG. TAG PBTD @ 4350'.

CIRCULATE WELL W/ AIR AND MIST CONTAINING FOAMER AND CORROSION INHIBITOR. PUMPED 3 BBL SWEEPS EVERY HR. SWEEPS CAME BACK CLEAR W/ NO SOLIDS OR ODOR. CLEANED OUT 65 BBLs FROM FORMATION.

PULL TBG ABOVE PERFS. SECURE WELL. SDFD. RETURN WELL TO SALES LINE.

TRAVEL FROM JICARRILLA C-17 TO KEY YARD

16-May-06

MONTHLY SAFETY AT KEY YARD

TRAVEL FROM KEY YARD TO JICARRILLA C-17

HELD SAFETY MEETING. DISCUSSED 4 POINTS OF TIF. JSA WORKING IN HOT WEATHER. SIGNS OF HEAT STROKE. DRINK PLENTY OF FLUIDS. ALSO TALKED ABOUT SNAKES ON LOC.

POH W/ TBG AND LAY DOWN BIT & MILL

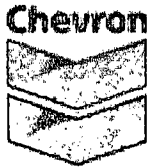
PU 2 3/8 NOTCHED COLLAR AND 2 3/8 API SEATING NIPPLE. TIH W/ 116 JTS. 2 3/8 PROD. TBG. LAND EOT @ 3613' KB.

NDBOP. HAD TROUBLE REMOVING THE COMPANION FLANGE. NUWH. SECURE WELL

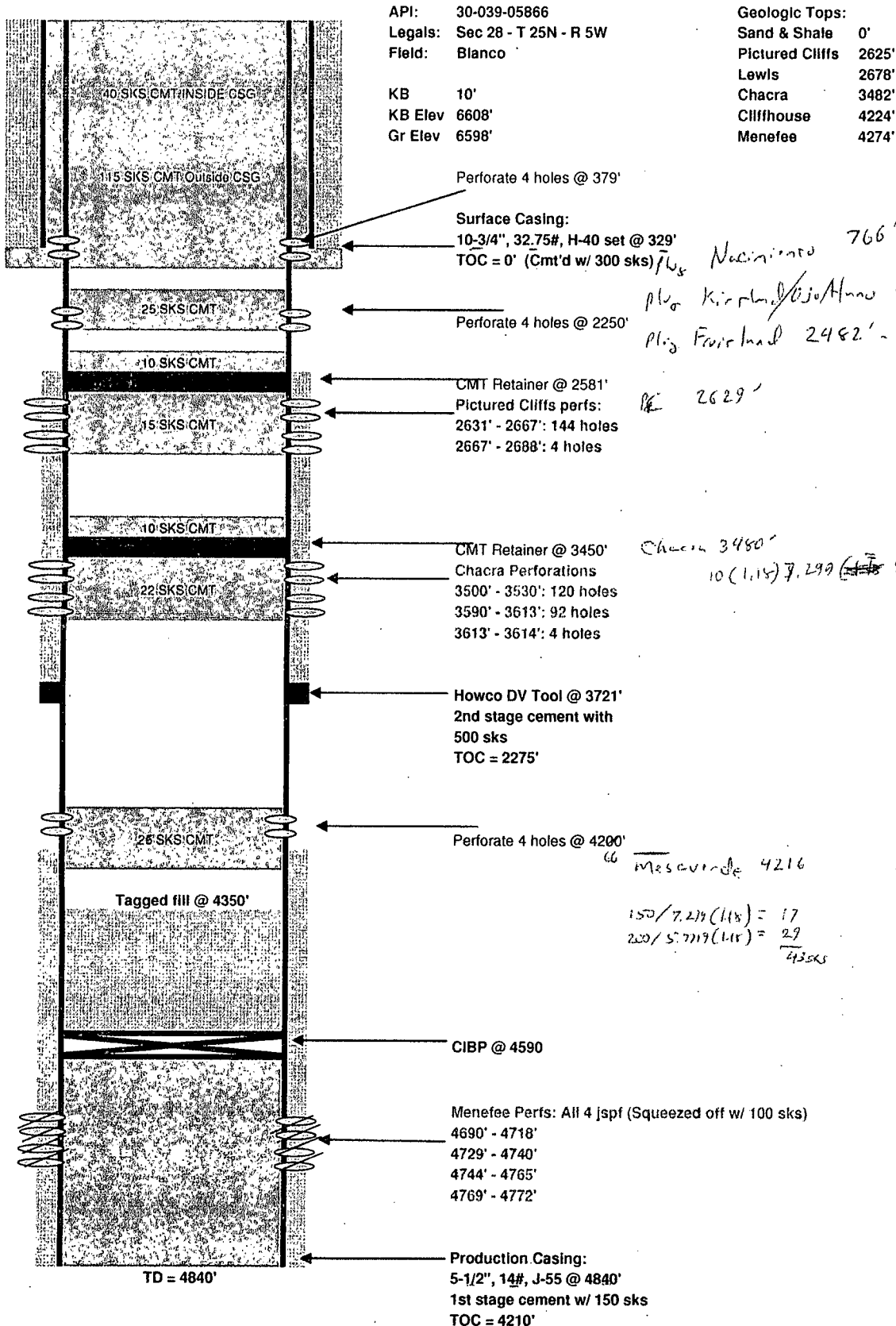
RIG DOWN RIG AND EQUIP. CLEAN LOCATION. MOVE RIG TO JICARRILLA C- 14E

TRAVEL TO KEY YARD

FINAL REPORT



Jicarilla C-17
Rio Arriba County, New Mexico
Current Well Schematic as of 5-17-06





ChevronTexaco

29-Apr-06

TRAVEL TO RIG AT H. J. LOE 3E

SAFETY MEETING W/ DAWN TRUCKING, COMMUNICATIONS, SPOTTERS, TRAFFIC

ROAD RIG TO WELL, LOAD HAUL ALL AIR AND RIG EQUIPMENT TO LOCATION.

SAFETY MEETING ON JSA'S ON SPOT EQUIPMENT AND RU

SPOT RIG MAT AND RIG, FRAC, FLOWBACK, RIG TANKS, RIG PUMP, JUNKBASKET, ACCUMULATOR, AIR EQUIPMENT

MIRU KEY 40, LAY LINES TO FLOWBACK TANK AND RIG PUMP, CHECK WELL, 1" - 70 PSI, 2 3/8" - 50 PSI, ANNULUS - 85

PSI, BRADENHEAD - 0 PSI. BLEED DOWN PSI.

BREAKDOWN LINES ON DUAL WELLHEAD, WHEN REMOVING VALVE OFF 1" TBG THE VALVE BROKE OFF W/ DUTCHMEN LEAVING 1" TBG

LOOKING UP OUT OF WELLHEAD W/ PARTIAL THREADS, ATTEMPTED TO REMOVE PACKING NUT OFF TBG HEAD BUT COULD NOT,

DRESSED UP THREADS ON 1" TBG AND REINSTALLED A 1" VALVE TO SECURE WELL, PUT WELL BACK TO SALES, SDFN.

TRAVEL TO FARMINGTON, WILL RESUME OP'S TUESDAY A.M.

2-May-06

TRAVEL TO LOCATION

SAFETY MEETING ON TIF, OE, RATTLESNAKES,

CHECK WELL, FWP - 1" - 62 PSI, 2" - 55 PSI, BLEED DOWN ALL PRESSURES, REMOVED PIPING FROM WELLHEAD, REMOVE TBG

HEAD NUT W/ CHAIN TONGS, NU 8 5/8" X 7 1/16 3K ADAPTER SPOOL, REMOVE 1" VALVE; CUT NEW THREADS IN 1" TBG AND

INSTALL COLLAR, PU SLIP GRIP ELEVATORS, PU ON 1" TBG 2", 1" SLIPS WOULD NOT PULL, CUT 1" PIPE BELOW BAD SPOT IN

PIPE WHERE SLIPS WERE SET AND RETHREAD SAME, PU ON 1" TO ATTEMPT TO PULL SLIPS, 1" PIPE MAY HAVE PARTED DOWN

HOLE, PU 1" TO COLLAR AND REMOVED SLIPS.

NU BOP'S. CHANGE OUT PIPE RAMS TO 1", RU FLOOR, RU TONGS.

POOH, LD, TALLY 1" TBG. RECOVERED 14 JTS. (352') PULLING SLOWLY, 1" COLLARS HANGING ON 2" COLLARS, FOUND TBG

PARTED IN THREADS.

CHANGE HANDLING EQUIPMENT TO 2 3/8", SCREW INTO HANGAR, WORKING TO FREE UP HANGAR, CAME FREE, PU TO 20K (4K

ABOVE STRING WT), SAT BACK DOWN, SECURE WELL, PUT TO SALES. SDFN.

TRAVEL TO FARMINGTON.

3-May-06

TRAVEL TO LOCATION

SAFETY MEETING ON TIF, JSA'S ON FREE PT AND CUTTING PIPE, STOP WORK AUTHORITY

MIRU WIRELINE SPECIALTIES, RIH W/ 1 7/16" FREE PT TOOLS. MADE TWO STOP'S AND TOOLS QUIT WORKING, POOH, CHANGE

OUT TOOLS, RAN FREEPOINT, 100% FREE AT 2100' UPPERMOST PT; 13% FREE AT 2245', POOH, PU 1 11/16" CHEMICAL CUTTER,

PUMP 15 BBLs 2% KCL DOWN TBG, CUT 2 3/8" TBG AT 2245'. POOH, WORK PIPE FREE, RDMO WIRELINE SPECIALTIES.

POOH, LD HANGAR, CONTINUE OUT OF HOLE LD 2 3/8" REG 10RD TBG SLOWLY, DRAGGING FOR THE FIRST 36 JTS, COLLARS ARE

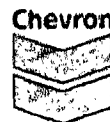
NOT TAPERED. RECOVERED 70 JTS, 2', 6', 8', 8' PUPS, TOTAL OF 2237.43 W/ 10' KB, SECURE WELL, SDFN. WORKSTRING

WILL BE DELIVERED LATER THIS EVENING.

TRAVEL TO FARMINGTON.

4-May-06

TRAVEL TO LOCATION



SAFETY MEETING ON TIF, OE, REDBOOK, TAG LINES, HANDLING DC'S

CHECK WELL, FWHP - 62 PSI, BLEED DOWN SAME, NOTE: RECIEVED AT LOCATION 5/3/06 EVENING 151 JTS 2 3/8" YELLOW BAND, 10 JTS 2 7/8" YELLOW BAND, 6 - 3 1/8" DC'S. PU 6 DC'S, RACK IN DERRICK, TALLY PIPE. MU FISHING TOOLS.

RIH W/ 4 11/16" OVERSOCKET W/ 1 1/8-1 5/8 SLIP, 10 JTS 2 7/8", 6.5#, EUE TBG, XO, 2 JTS 2 3/8" TBG, SN, 25 JTS 2 3/8" TBG, TAG FISH AT 1094.02, WORKOVER AND LATCH SAME, WORK SAME, WOULD NOT WORK FREE, PU AND PARTED AT 30K, 20K OVER, CAME FREE. POOH. LD 26 JTS 1" PIPE. (657.99') TOTAL RECOVERED - 1009.66'.

RIH W/ SAME BHA, TAG TOF (1") AT 1752.01'.

WORKING TBG OVER 1" TBG TO TOP OF 2 3/8" FISH AT 2238' PM, 10' IN ON JT # 62

POOH, LD 4 JTS 2 3/8" TBG, RACK BACK 54 JTS PULLING SLOWLY, DRAGGING FIRST 31 JTS, ROTATING PIPE BY HAND, PULLING @ 22K. STRING WT - 14K, FOUND 1" TBG, RIH W/ 1 STND. SECURE WELL, PUT TO SALES, SDFN.

TRAVEL TO FARMINGTON.

5-May-06

TRAVEL TO LOCATION

SAFETY MEETING ON TIF, OE, REDBOOK, LAYING DOWN PIPE.

POOH W/ 2 3/8" AND 2 7/8" BHA CUT 1" PIPE AND LAYED DOWN W/ TBG (16 PIECES) TO OVERSHOT, LD 40 JTS 1" TBG.

RECOVERED 1516.20' OF 1", TOTAL RECOVERED - 2525.86'. LEAVES APPROX 116' TO RECOVER LESS KB.

PU & RIH W/ 4 11/16" FULL OPENING OVERSHOT, W/ 2 3/8" GRAPPLE, X-O SUB, 72 JTS (4' OUT) 2 3/8" TBG. TAG FISH AT 2239' WORK & LATCH FISH.

PUMP 25 BBLS 2% KCL, CAUGHT PSI AFTER 20 BBLS PUMPED, PI TO PERFS @ 250 PSI. SD PUMP, ISIP - 0 PSI. WORK TBG TO UNSTING FROM PKR, WORK UP TO 54K. CAME FREE.

POOH W/ 2 3/8" TBG, PULLED 9 STANDS AND STARTED DRAGGING, WORKING PIPE, PULLING 20K OVER STRING.WT. RECOVERED OVERSHOT, BREAKDOWN TOOLS, LD CUT JT AND 5 JTS 10RD TBG. PIPE WILL NOT FALL AT THIS PT, CAN ONLY PULL.

DRUM CHAIN BROKE, SECURE WELL, SDFN.

TRAVEL TO FARMINGTON

6-May-06

TRAVEL TO LOCATION

SAFETY MEETING ON TIF, MEETING OR EXCEEDING CUSTOMERS EXPECTATIONS, FROM REDBOOK, PPE.

REPAIRS TO RIG, DRUM CHAIN

CHECK WELL, FWHP - 62 PSI, BLEED DOWN SAME, CONTINUE OUT OF HOLE LAYING DOWN 2 3/8", 10 RD TBG. DRAGGING 10-20K OVER, INCHING OUT OF HOLE, PULLED OUT 1" TBG, LD SIMULTANEOUSLY RECOVERED 7 JTS OF 1", (1" WAS PARTED, 3JTS ALONGSIDE OF 4JTS) LD SEAL ASSY, APPEARS BTM JT OF 1" RECOVERED, TOTAL OF 2701.34' OF 1", REC 38 JTS & 1 CUT JT 2 3/8" RECOVERED TOTAL OF 108 JTS 2 3/8" 10 RD. (107 FULL & 1 CUT JT) TOTAL OF 3440'. NOTE: FOUND A CIRCULATING VALVE IN SN ABOVE SEAL ASSY.

MU PACKER PICKER 4 3/4" OD SHOE ASSY, 3 1/8" JARS, 6 - 3 1/8" DC'S, X-O, (197.50), RIH W/ 35 STNDS 2 3/8" TBG,

PU & RIH W/ 34 JTS 2 3/8" TBG TO 3427.59'. NO TAG.

POOH W/ 13 STNDS 2 3/8" TBG, EOT - 2626.66', ABOVE TOP PERFS.

LOAD UP HANDLING TOOLS, SECURE WELL, PUT TO SALES, SECURE WELL, WILL RESUME OP'S TUESDAY 5/9/06

TRAVEL TO FARMINGTON.

9-May-06



TRAVEL KEY YARD TO JICARILLA C-17.

WHP = 62 PSI. SAFETY MEETING, DISCUSS 4 PTS TIF, JSA RIH & MILL BAKER MODEL D PACKER. ASSIGN MENTORS TO FIRST DAY GREEN HAT. JSO GREEN HAT MAKING A CONNECTION.

RIH W/ BAKER PACKER PLUCKER TO 3411'

TAG UP W/ MILLING TOOL @ 3446', ESTABLISH CIRCULATION, START MILLING PACKER

MILL PACKER

POOH W/ FISH.

LUNCH

POOH. LD COLLARS. LD PACKER.

SEND FLOAT TO TOWN W/ 1" TBG - 2-3/8" TBG PULLED FROM WELL, 6 COLLARS AND 10 JTS 2-7/8" NEW TBG.

WIND BLOWING TOO HARD TO RIH. TRAVEL JICARILLA C-17 TO FARMINGTON.

10-May-06

TRAVEL FROM KEY YARD TO JICARILLA C-17

DISCUS 4 POINTS OF TIF, JSA MAKE BIT & WATERMELON MILL, JSA CLEANOUT WITH AIR.

TRIP IN HOLE W/ 2 3/8 TBG. AND 4 3/4" BIT & MILL. START CIRCULATION 10 BPH MIST CONTAINING 2 GAL. PER 20 BBLS

SOAP AND 2 GAL PER 20 BBLS CORROSION INHIBITOR. RUN 2 BBL SWEEPS EVERY HOUR CONTAINING 1/2 GAL SOAP.

POOH W/ BIT & MILL.

VERIFY JICARILLA 14E ANCHORS ARE CURRENT & READY FOR USE.

MAKE UP HALLIBURTON RBP & PACKER ON 2 3/8 TBG. RIH & SET RBP @ 3620'.

PULL PKR UP TO 2623' & SET. LOAD AND TEST ANN. TO 500 PSI. TEST WAS GOOD

RELEASE PKR, SECURE WELL. SDFD

TRAVEL FROM JICARILLA C-17 TO KEY YARD

11-May-06

TRAVEL FROM KEY YARD TO JICARRILA C-17

SAFETY MEETING, DISCUSS 4 POINTS OF TIF. JSA PUMPING ENERGIZED ACID, VERIFIED MENTORS FOR 2 HALLIBURTON GREEN HATS.

RIH W/ 2 3/8 TBG & PKR, SET @ 3480'

RIG UP HES AND FLOWBACK LINE. PRESSURE TEST TREATING LINES TO 4000 PSI.

ESTABLISH RATE W/ 2% KCL WATER @ 3BPM, 825 PSI, START PUMPING ACID AND N2. AVG. RATE WAS 1750 SCF N2 AND 4 BPM ACID. FLUSH W/ 2% KCL AND N2 @ SAME RATE AND PRESSURE. HALLIBURTON INADVERTENTLY FORGOT TO ADD FOAMER TO CHACRA TREATMENT. ISIP 1694 PSI. 5 MIN. 918 PSI. 10 MIN. 837 PSI. 15 MIN 777 PSI. MAX RATE WAS 2200 SCFPM N2

AND 4 BPM WATER. MAX PRESSURE WAS 2434 PSI.

FLOW WELL BACK TO FLOWBACK TANK ON 1/2" CHOKE. STARTING WAS 660 PSI. TOTAL FLOW BACK WAS 6 BBLS. PRESSURE FELL TO 0 PSI

RIG DOWN FLOWBACK LINE. RELEASE PKR. RIH AND RETRIEVE RBP. PULL RBP TO 2690 AND SET. PULL PKR TO 2590' AND SET.

RIG UP HES. PRESSURE TEST LINES TO 4000 PSI. ESTABLISH RATE W/ 2% KCL AT 4 BPM @ 1500 PSI. START PUMPING ACID @ 2130 SCF N2 AND 5 BPM ACID AT 2060 PSI. W/ FOAMER. DISPLACE ACID @ SAME RATE AND PRESSURE W/ 2% KCL W/ FOAMER. MAX PRESSURE 2130. ISIP 1368 PSI. 5 MIN 483 PSI. 10 MIN 415 PSI. 15 MIN 362 PSI.

OPEN WELL TO FLOWBACK TANK W/ 362 PSI. PRESSURE FELL TO 0 PSI. NO APPRECIABLE LIQUID.

RIG DOWN HES. RELEASE PKR. RIH AND RETRIEVE RBP. POH W/ PKR AND RBP. WELL STARTED KICKING W/ 34 JTS IN HOLE.

INSTALL TIW VALVE. PUMP 5 BBLS 2% KCL DOWN TO KILL TBG. FINISH POH W/ PKR AND RBP. LAY DOWN PKR AND RBP.



SWIFN. TRAVEL JICARRILLA C-17 TP FARMINGTON.

12-May-06

TRAVEL FROM KEY YARD TO JICARRILLA C-17

HELD SAFETY MEETING. DISCUSSED 4 POINTS OF TIF. JSA CLEANING OUT W/ AIR. WATCH FOR TRAPPED PRESSURE. STAY IN GOOD COMMUNICATION W/ EVERYONE ON LOCATION. TALKED ABOUT SNAKES ON LOCATION. FLAGGED T-POST MAKER ON DRIP LINE DAMAGED BY VEHICLE YESTERDAY (FACILITIES MANAGER NOTIFIED).

PICK UP 4 3/4" BIT AND STRING MILL. RIH W/ 2 3/8 TBG TO 3720'. RIG UP AND START CIRCULATING W/ AIR.

CIRCULATE W/ AIR MIST. TOOK 25 MIN TO GET CIR TO SURFACE. LINE ON MIST PUMP WASHED OUT. SHUT DOWN FOR REPAIRS.

REPAIR LINE ON MIST PUMP

START CIRCULATING AGAIN PUMPING W/ FOAMER AND CORROSION INHIBITOR. PUMP 2 BBL SWEEPS EVERY HR. RECOVERED 200 BBLs FLUID BACK TO FLOWBACK TANK 80 BBLs WAS FLUID PUMPED IN MIST LEAVING 120 BBLs RECOVERED FROM ACID JOB.

SHUT DOWN CIRCULATION. POH ABOVE PERFS. SECURE WELL. SDFD. RETURN WELL TO SALES LINE

TRAVEL FROM JICARRILLA C-2 TO KEY YARD.

13-May-06

TRAVEL FROM KEY YARD TO JICARRILLA C-17

HELD SAFETY MEETING ON 4 POINTS OF TIF. JSA ON SNAKES ON LOC, PROPER PPE AND LIFTING PRACTICES.

RIH W/ 2 3/8 TBG. TAG PBTD @ 4350'.

CIRCULATE WELL W/ AIR AND MIST CONTAINING FOAMER AND CORROSION INHIBITOR. PUMPED 3 BBL SWEEPS EVERY HR. SWEEPS

CAME BACK CLEAR W/ NO SOLIDS OR ODOR. CLEANED OUT 65 BBLs FROM FORMATION.

PULL TBG ABOVE PERFS. SECURE WELL. SDFD. RETURN WELL TO SALES LINE.

TRAVEL FROM FROM JICARRILLA C-17 TO KEY TARD

16-May-06

MONTHLY SAFETY AT KEY YARD

TRAVEL FROM KEY YARD TO JICARRILLA C-17

HELD SAFETY MEETING. DISCUSSED 4 POINTS OF TIF. JSA WORKING IN HOT WEATHER. SIGNS OF HEAT STROKE. DRINK PLENTY OF FLUIDS. ALSO TALKED ABOUT SNAKES ON LOC.

POH W/ TBG AND LAY DOWN BIT & MILL

PU 2 3/8 NOTCHED COLLAR AND 2 3/8 API SEATING NIPPLE. TIH W/ 116 JTS. 2 3/8 PROD. TBG. LAND EOT @ 3613' KB.

NDBOP. HAD TROUBLE REMOVING THE COMPANION FLANGE. NUWH. SECURE WELL

RIG DOWN RIG AND EQUIP. CLEAN LOCATION. MOVE RIG TO JICARRILLA C- 14E

TRAVEL TO KEY YARD

FINAL REPORT

UNITED STATES DEPARTMENT OF THE INTERIOR
BUREAU OF LAND MANAGEMENT
FARMINGTON DISTRICT OFFICE
6251 COLLEGE BLVD.
FARMINGTON, NEW MEXICO 87402

Attachment to notice of
Intention to Abandon:

Re: Permanent Abandonment
Well: 17 Jicarilla C

CONDITIONS OF APPROVAL

1. Plugging operations authorized are subject to the attached "General Requirements for Permanent Abandonment of Wells on Federal and Indian Lease."
2. Farmington Office is to be notified at least 24 hours before the plugging operations commence (505) 564-7750.
3. The following modifications to your plugging program are to be made:
 - a) Place the Measverde plug from 4266' – 4166'.
 - b) Place the Fruitland plug from 2482' – 2382' inside and outside the 5 ½" casing.
 - c) Place the Kirtland/Ojo Alamo plug from 2308' - 2051' inside and outside the 5 ½" casing.
 - d) Place the Nacimiento plug from 766' - 666' inside and outside the 5 ½" casing.

You are also required to place cement excesses per 4.2 and 4.4 of the attached General Requirements.

Office Hours: 7:45 a.m. to 4:30 p.m.