

Submit 1 Copy To Appropriate District
Office.
District I - (575) 393-6161
1625 N. French Dr., Hobbs, NM 88240
District II - (575) 748-1283
811 S. First St., Artesia, NM 88210
District III - (505) 334-6178
1000 Rio Brazos Rd., Aztec, NM 87410
District IV - (505) 476-3460
1220 S. St. Francis Dr., Santa Fe, NM
87505

State of New Mexico
Energy, Minerals and Natural Resources

Form C-103

Revised July 18, 2013

OIL CONSERVATION DIVISION
1220 South St. Francis Dr.
Santa Fe, NM 87505

WELL API NO. 30-045-23524
5. Indicate Type of Lease STATE <input checked="" type="checkbox"/> FEE <input type="checkbox"/>
6. State Oil & Gas Lease No. L-2986
7. Lease Name or Unit Agreement Name New Mexico State
8. Well Number 1
9. OGRID Number 149052
10. Pool name or Wildcat Nageezi Gallup

SUNDRY NOTICES AND REPORTS ON WELLS (DO NOT USE THIS FORM FOR PROPOSALS TO DRILL OR TO DEEPEN OR PLUG BACK TO A DIFFERENT RESERVOIR. USE "APPLICATION FOR PERMIT" (FORM C-101) FOR SUCH PROPOSALS.)	
1. Type of Well: Oil Well <input checked="" type="checkbox"/> Gas Well <input type="checkbox"/> Other <input type="checkbox"/>	
2. Name of Operator Elm Ridge Exploration Co., LLC	
3. Address of Operator PO Box 156, Bloomfield, NM 87413	
4. Well Location Unit Letter <u>O</u> : <u>790</u> feet from the <u>SOUTH</u> line and <u>1750</u> feet from the <u>EAST</u> line Section <u>32</u> Township <u>24N</u> Range <u>8W</u> NMPM San Juan County	
11. Elevation (Show whether DR, RKB, RT, GR, etc.) 7019' KB	

12. Check Appropriate Box to Indicate Nature of Notice, Report or Other Data

NOTICE OF INTENTION TO:

PERFORM REMEDIAL WORK ☐ PLUG AND ABANDON ☒
TEMPORARILY ABANDON ☐ CHANGE PLANS ☐
PULL OR ALTER CASING ☐ MULTIPLE COMPL ☐
DOWNHOLE COMMINGLE ☐
CLOSED-LOOP SYSTEM ☐
OTHER: ☐

SUBSEQUENT REPORT OF:

REMEDIAL WORK ☐ ALTERING CASING ☐
COMMENCE DRILLING OPNS. ☐ P AND A ☐
CASING/CEMENT JOB ☐
OTHER: ☐

13. Describe proposed or completed operations. (Clearly state all pertinent details, and give pertinent dates, including estimated date of starting any proposed work). SEE RULE 19.15.7.14 NMAC. For Multiple Completions: Attach wellbore diagram of proposed completion or recompletion.

Elm Ridge Exploration Co., LLC requests permission to plug and abandon this well according to the attached procedure.

✚ File a copy of the referenced CBL for review/approval or perform a new CBL.
✚ Extend Dakota plug up to 6180'
✚ Move Mancos plug to 4370'-4470'
✚ On PC/Fruitland plug set retainer at approx 1820 and bring the plug top to 1560'
✚ Add Kirtland plug from 1275'-1375'

RCVD DEC 13 '13
OIL CONS. DIV.

DIST. 3

Notify NMOCD 24 hrs
prior to beginning
operations

Spud Date: 5/16/1979

Rig Release Date:

I hereby certify that the information above is true and complete to the best of my knowledge and belief.

SIGNATURE _____ TITLE Sr. Regulatory Supervisor DATE 12/12/2013

Type or print name Amy Mackey E-mail address: AMackey1@elmridge.net PHONE: 505-632-3476 ext. 201

For State Use Only

APPROVED BY: [Signature] TITLE Deputy Oil & Gas Inspector, DATE 12-24-13

Conditions of Approval (if any):

AV

Plugging Program for New Mexico State #1

Plug 1: Drill out CIBP at 5428'. With end of tubing near PBTD, spot 24 sx plug from PBTD to 6245', to cover top of Dakota. Pull up and reverse circulate with 2 tubing volumes of water.

Plug 2: Set retainer at 5250'. Squeeze 5 sx below retainer and spot 4 sx on top of retainer, to cover top of perfs and Gallup. Pull up and reverse circulate with 2 tubing volumes of water.

Plug 3: With end of tubing at 4400', spot 12 sx balanced plug from 4400-4300', to cover top of Mancos. Pull up and reverse circulate with 2 tubing volumes of water.

Plug 4: With end of tubing at 3336', spot 12 sx balanced plug from 3336-3236, to cover top of Mesaverde. Pull up and reverse circulate with 2 tubing volumes of water.

Plug 5: With end of tubing at 2670', spot 12 sx balanced plug from 2670-2570, to cover top of Chacra. Pull up and reverse circulate with 2 tubing volumes of water.

Plug 6: Perforate 4 holes at 1870'. Set retainer at 1676'. Squeeze 117 sx below retainer, and spot 4 sx on top of retainer, to cover Pictured Cliffs and Fruitland tops inside and outside 4-1/2" casing. Pull up and reverse circulate with 2 tubing volumes of water.

Plug 7: Perforate 4 holes at 1119'. Tie onto 4-1/2" casing and mix and pump 465 sx, or sufficient volume to cover top of Ojo Alamo, and to bring cement to surface, inside and outside 4-1/2" casing.

Remediate location per NMOCD conditions of approval.

Elm Ridge Resources

Pertinent Data Sheet

Well Name: New Mexico State #1
Footage: 790' FSL and 1750' FEL
Location: Section 32, T24N, R8W
County: San Juan County, NM
API#: 30-045-23524

Field: Nageezi Gallup

Elevation: 7019' KB

TD: 6521' KB

PBTD: 6503' KB

CIBP: 5428' KB

Completed: 11/9/79

Casing Record:

Hole Size	Casing Size	Wt.	Grade	Depth Set	Cement
12-1/4"	8-5/8"	24#	J-55	295'	275 sx (Circ. To Surface)
7-7/8"	4-1/2"	11.6 & 10.5#	J-55	6520'	700 sx TOC: 2322' (CBL)

Tubing Record: 2-3/8" tbg. set at 1502'. SN at 1472'. (3/26/13)

Workover Record: 8/89: Squeezed casing failure between 2855' and 2888' with 170 sx in formation.

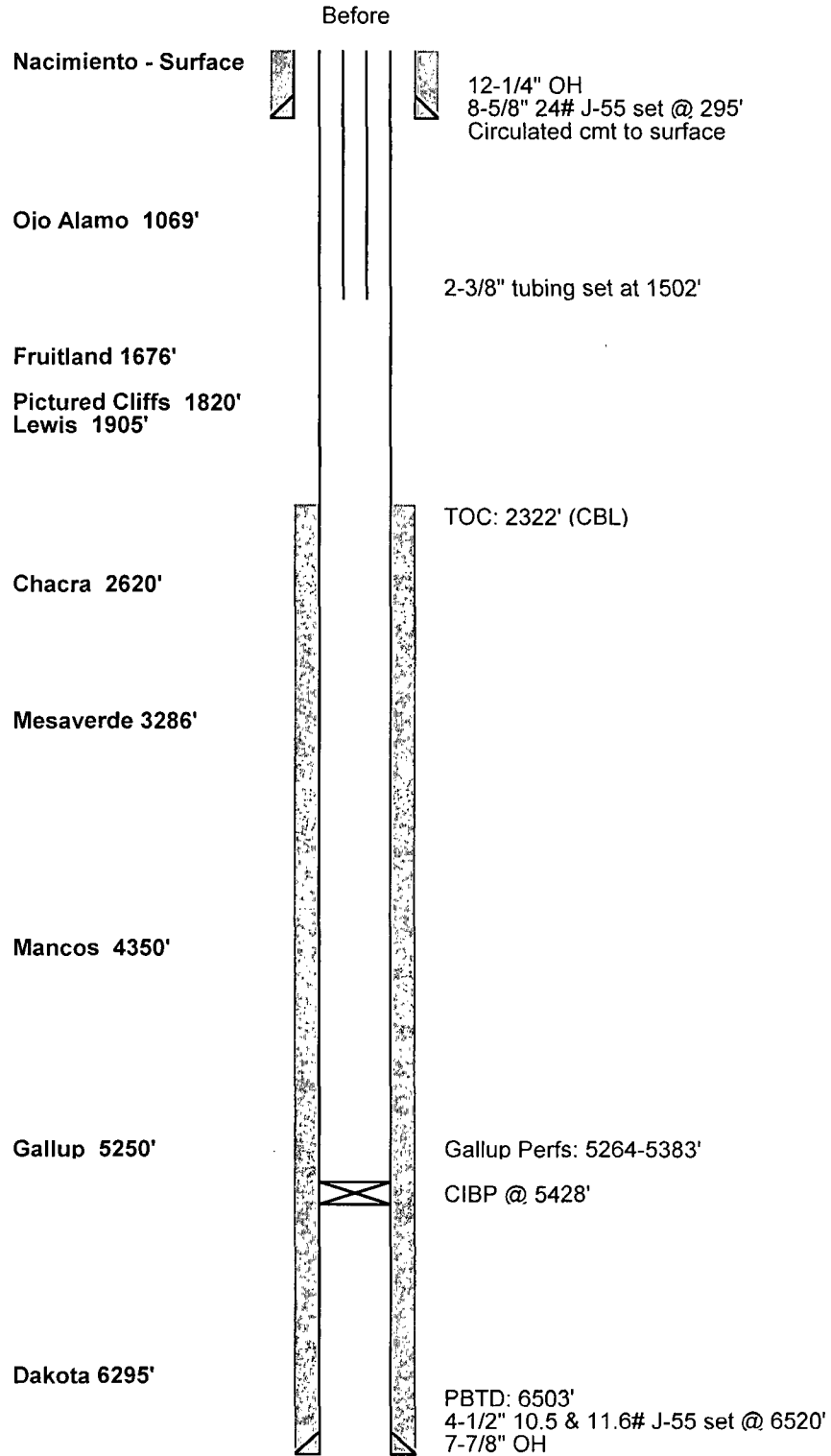
Formation Tops:

Nacimiento	Surface
Ojo Alamo	1069'
Fruitland	1676'
Pictured Cliffs	1820'
Lewis	1905'
Chacra	2620'
Mesaverde	3286'
Mancos	4350'
Gallup	5250'
Dakota	6295'

Perforations: Gallup: 5264-5383'

Wellbore Diagram

New Mexico State #1
SE/4 Sec. 32, T24N, R8W
San Juan County Co., NM
API #30-045-23524



Wellbore Diagram

New Mexico State #1
SE/4 Sec. 32, T24N, R8W
San Juan County Co., NM
API #30-045-23524

